

THE NIPPON FOUNDATION-GEBCO

SEABED
2030

4 MAY 2023

IHO 3rd Assembly Thematic Block 1:

Ocean Mapping

Jamie McMichael-Phillips
Seabed 2030 Director



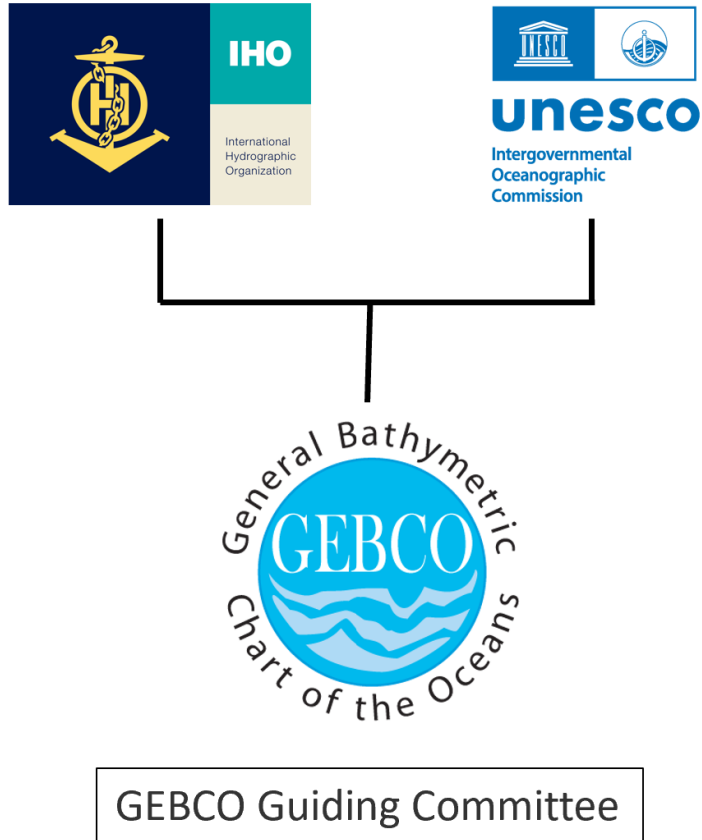
GEBCO

Today the **General Bathymetric Chart of the Oceans** is a joint programme of:

- The **International Hydrographic Organization**
- &
- The **Intergovernmental Oceanographic Commission**

Aim: to provide authoritative, publicly-available bathymetry (depth) data sets of the world's oceans

The GEBCO community is largely a voluntary force of international scientists, oceanographers and hydrographers

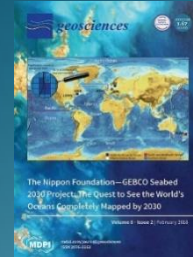


Seabed 2030 is an “accelerator” to fast-track GEBCO’s aim

Seabed 2030

Collaborative project between The Nippon Foundation & GEBCO to inspire complete mapping of the world's ocean by 2030 & to compile all bathymetric (depth) data into the freely-available GEBCO Ocean Map.

Seabed 2030 is an “accelerator” to fast-track GEBCO’s aim



June 2016

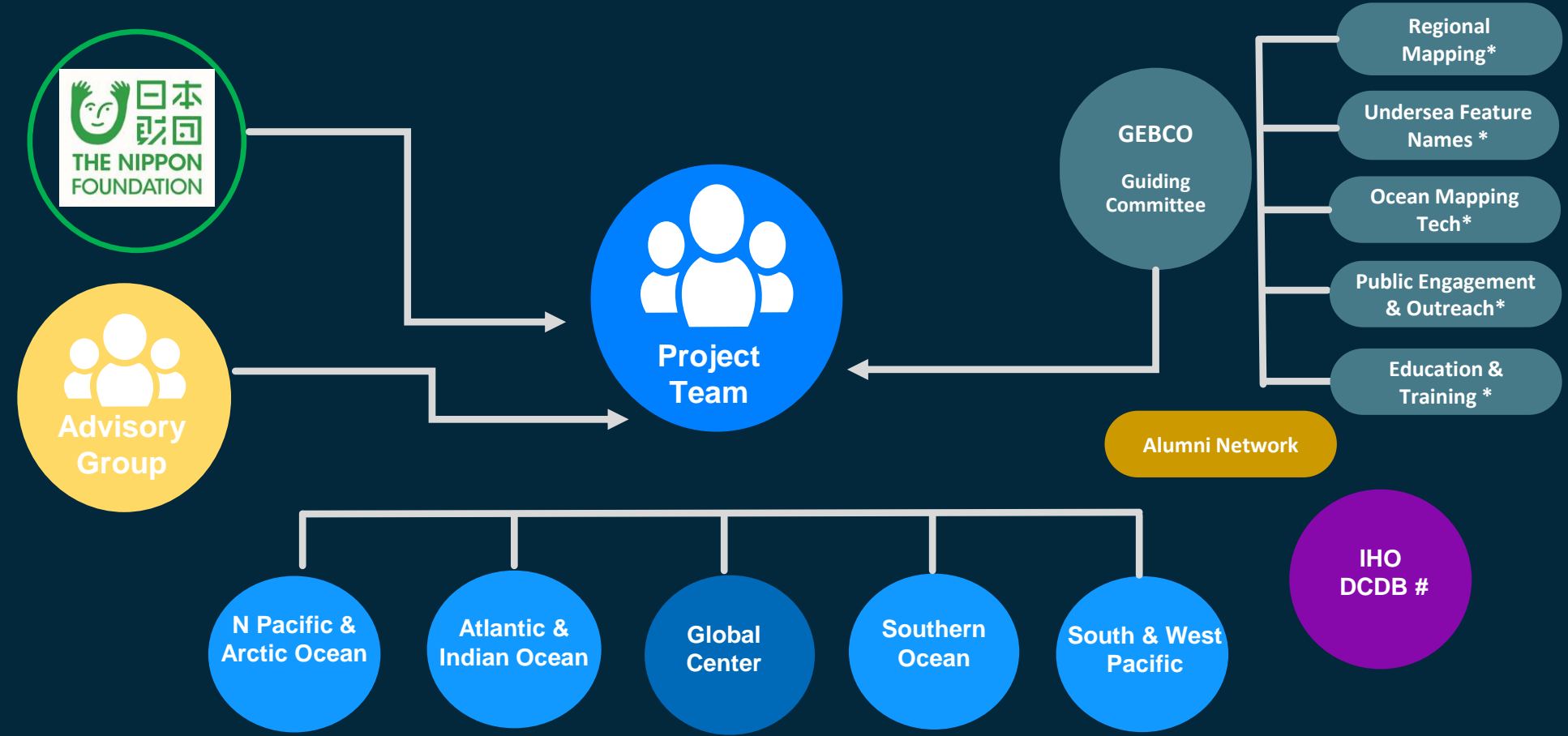


June 2017



June 2021

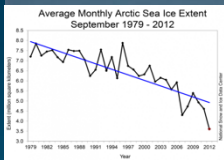
Seabed 2030 Network



4 x Regional Centers + 1 x Global Center

(* GEBCO Sub Committees)

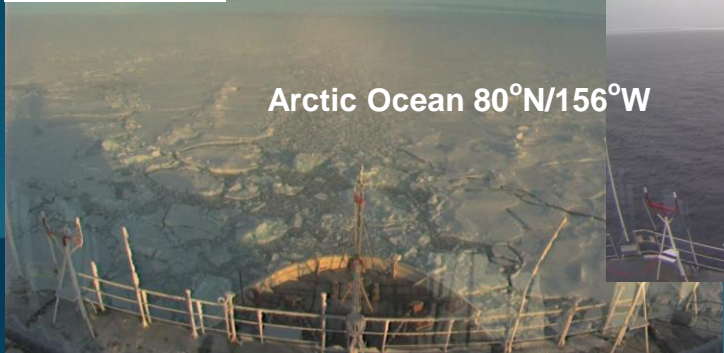
(# Data Centre for Digital Bathymetry)



13 September 2008

12 September 2012

Arctic Ocean 80°N/156°W



Courtesy: Larry Mayer, UNH



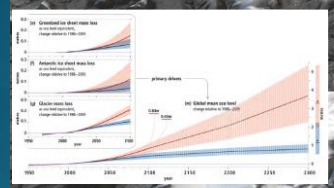
Ocean Pollution

Courtesy: Larry Mayer, UNH



You Can't Properly Manage what you Haven't Measured

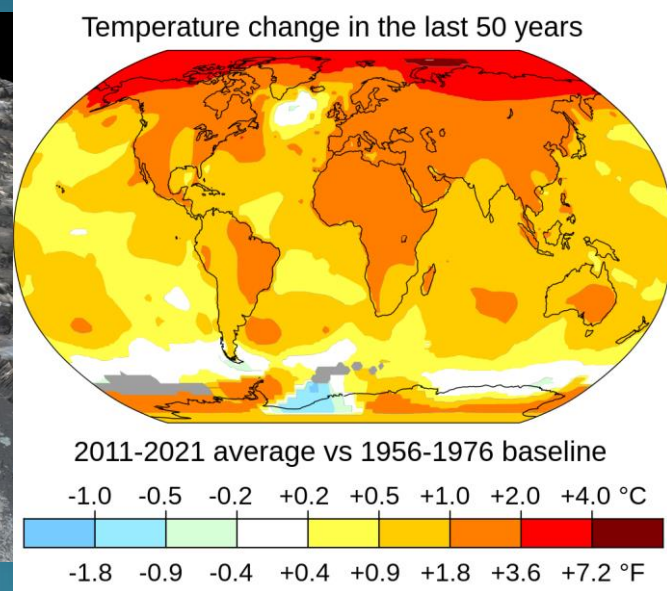
Predicted global mean sea level rise by 2300
600 million people live within 10 m above sea level



RCP8.5
RCP2.6

Ryder Fjord, N Greenland

Courtesy: Martin Jakobsson, SU



Climate

Courtesy: NASA













Alaska 1975

Courtesy: NOAA



- A clean ocean
- A healthy and resilient ocean
- A productive ocean
- A predicted ocean
- A safe ocean
- An accessible ocean
- An inspiring and engaging ocean

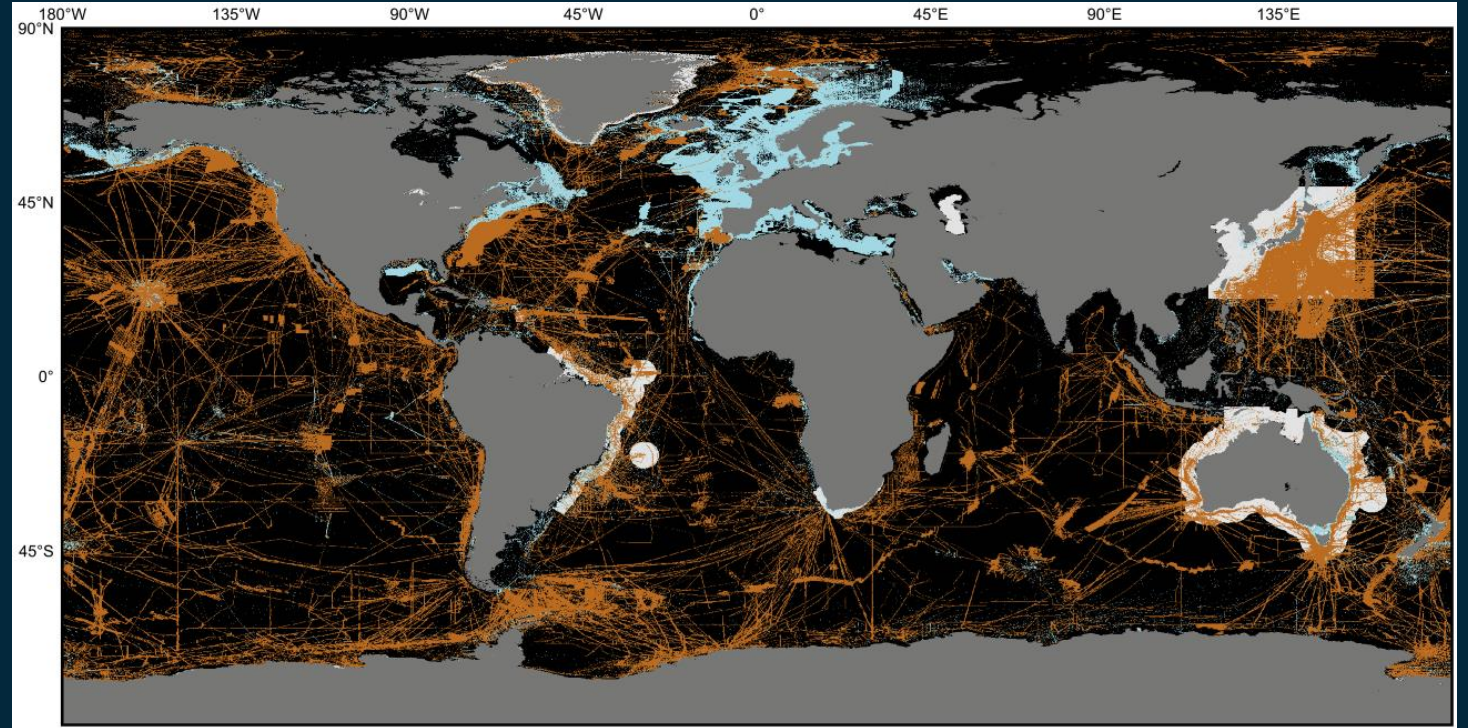
OCEAN DECADE CHALLENGES

	Pollutants	Coastal -bathymetry
	Ecosystems	Mapping central
	Food from the Ocean	Bathymetry dependent
	Ocean economy	Mapping intensive
	Ocean-climate nexus	Modelling, SLR, etc.
	Ocean-related risks	Bathymetry intensive
	Ocean observing system	Georeferencing
	Ocean digital representation	Central facility
	Capacity development	Strongly needed
	Behaviour change	Resonates with people

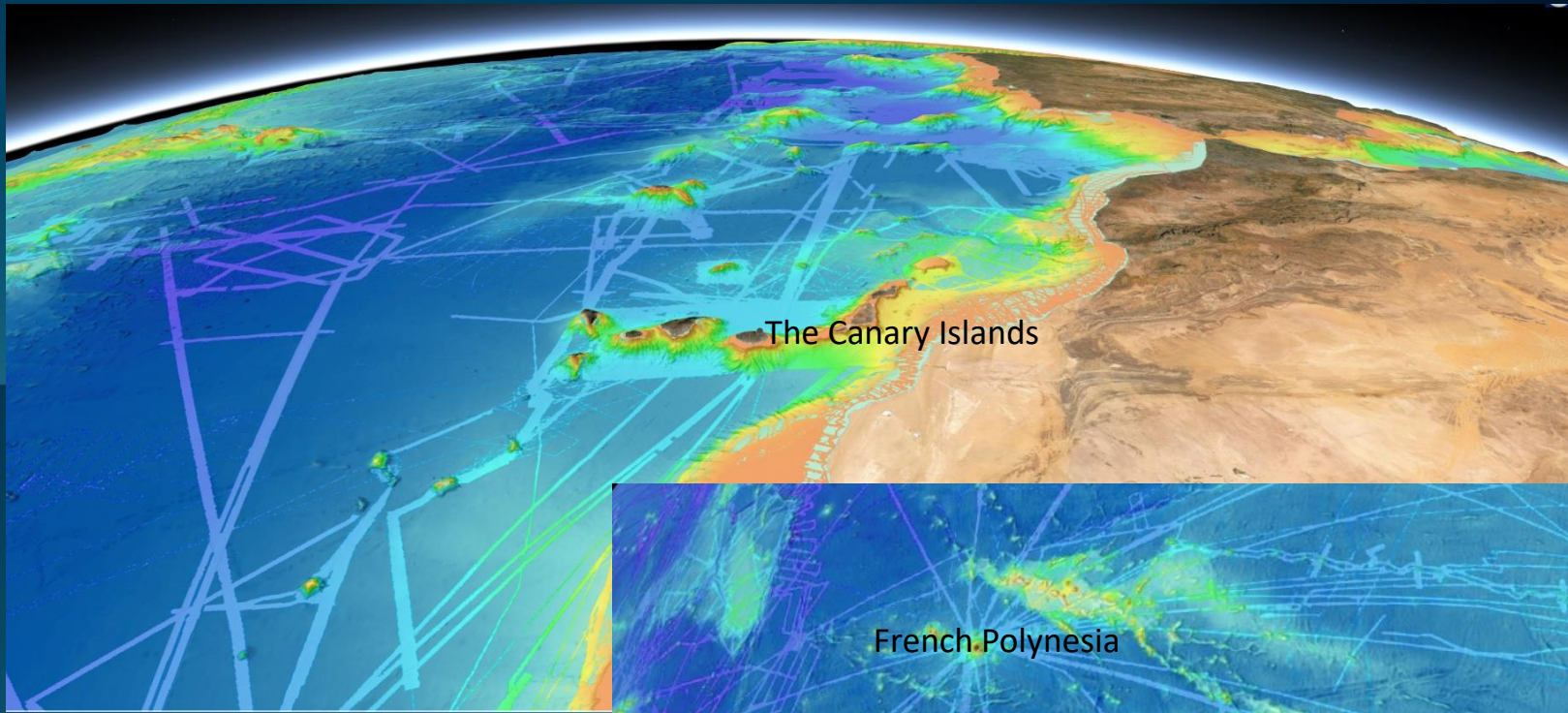
Progress so far...

GEBCO 2023 Grid Delivery

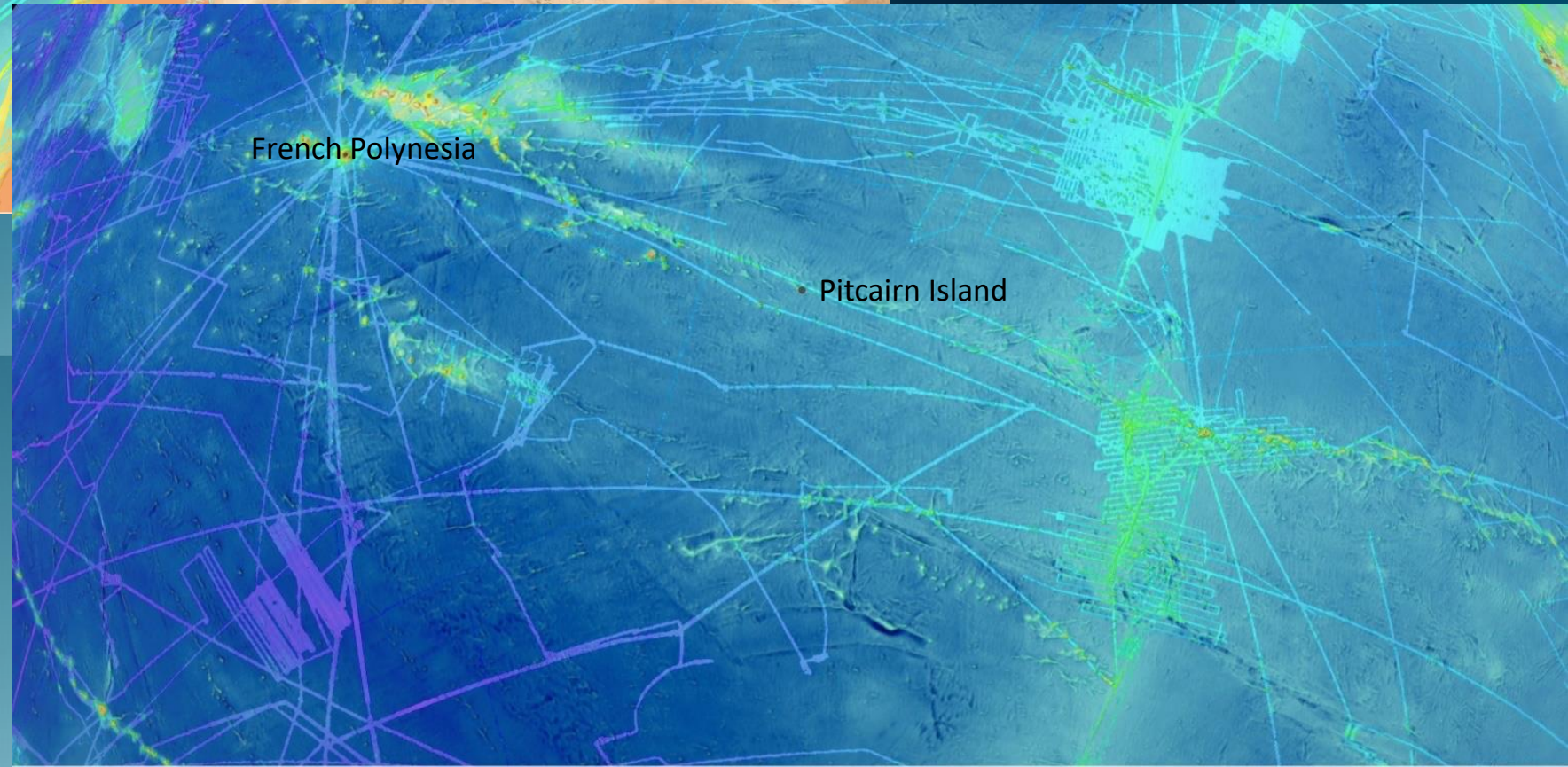
- GEBCO Grid stood at 6% coverage when Seabed 2030 began
- Ocean mapping coverage now stands at **24.9%** (May 2023)
- Still 3/4 of the ocean floor to be mapped



Courtesy: Martin Jakobsson, SU

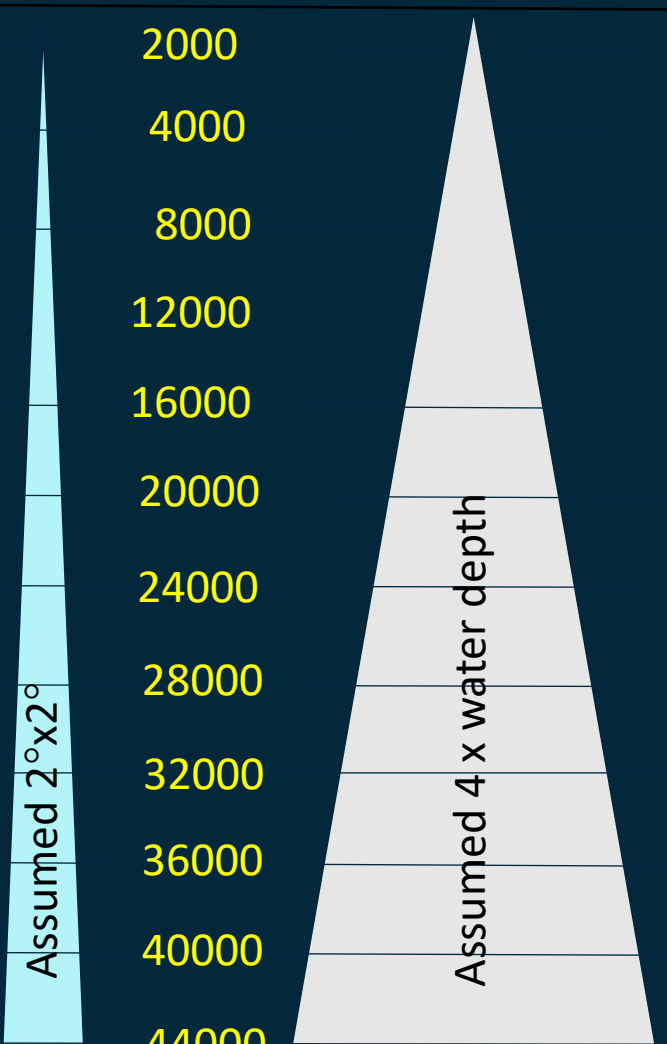


Paucity of Depth Information



Mapping with surface vessel, deep water multibeam (12 kHz 2°x 2°, 60 ° from nadir)

World Ocean area	"Resolution" (foot print)	"Coverage" (swath width)
9.7 %	35	2000
2.0 %	70	4000
4.4 %	140	8000
8.6 %	209	12000
22.2 %	279	16000
31.8 %	349	20000
19.9 %	419	24000
1.0 %	489	28000
0.1 %	559	32000
<0.1 %	628	36000
	698	40000
	768	44000



Target Resolutions

- 100x100 m (0-1500 m)
- 200x200 m (1500-3000 m)
- 400x400 m (3000-5750 m)
- 800x800 m (5750-11000 m)

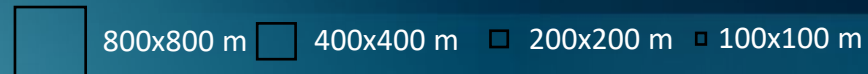
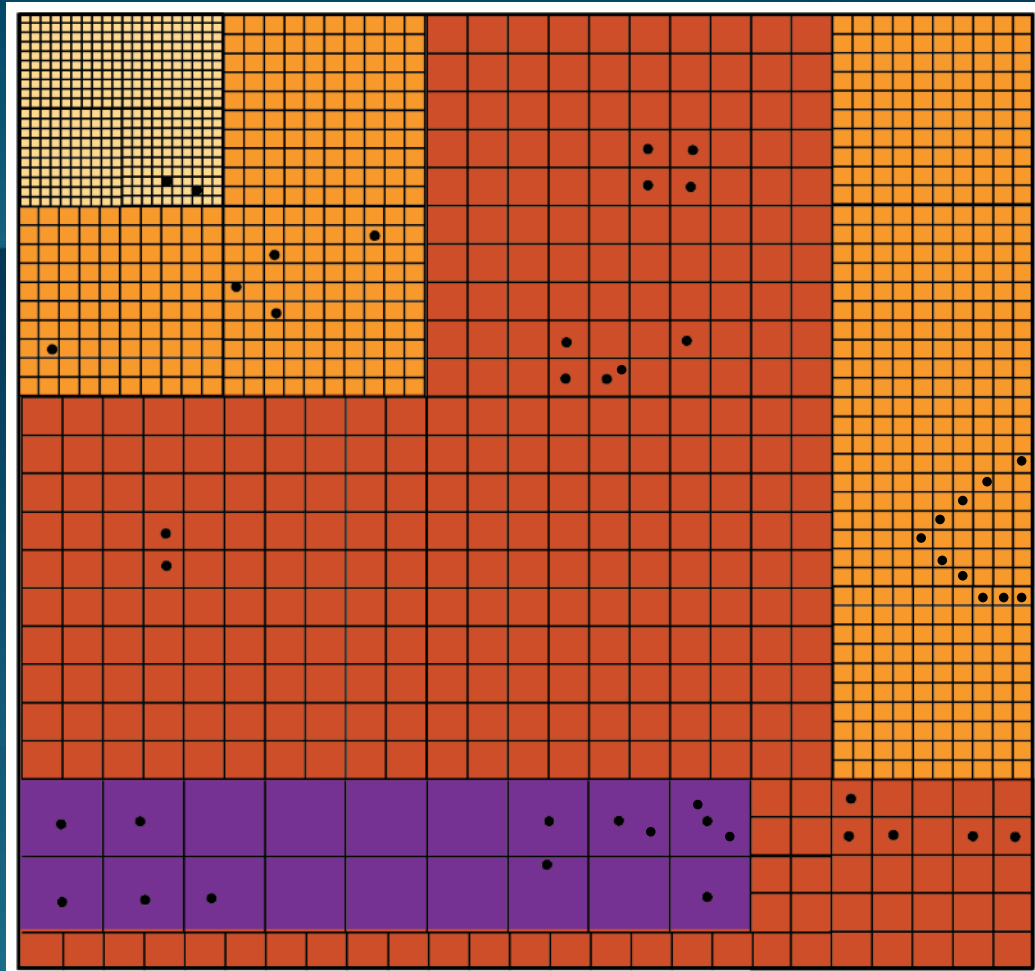
0
500
1000
2000
3000
4000
5000
6000
7000
8000
9000
10000
11000

Depth (m)

At best only one depth value in area the size of a soccer pitch



Courtesy: Martin Jakobsson, SU



Grid cell mapped if it contains at least one depth value.

Data used to compute values in the GEBCO Ocean Map product (aka the GEBCO Grid) but data not distributed as part of the end product.

Happy to accept decimated data resolutions if higher resolutions are considered sensitive.

How do I contribute my data?

Process varies according to what you have – physical media such as tapes and paper files, versus digital media.

The GEBCO community that Seabed 2030 serves will assist you to make it as smooth and straightforward as possible.

Go to <http://seabed2030.org/contribute> to see the form used to describe your data, and a short video that describes the process.

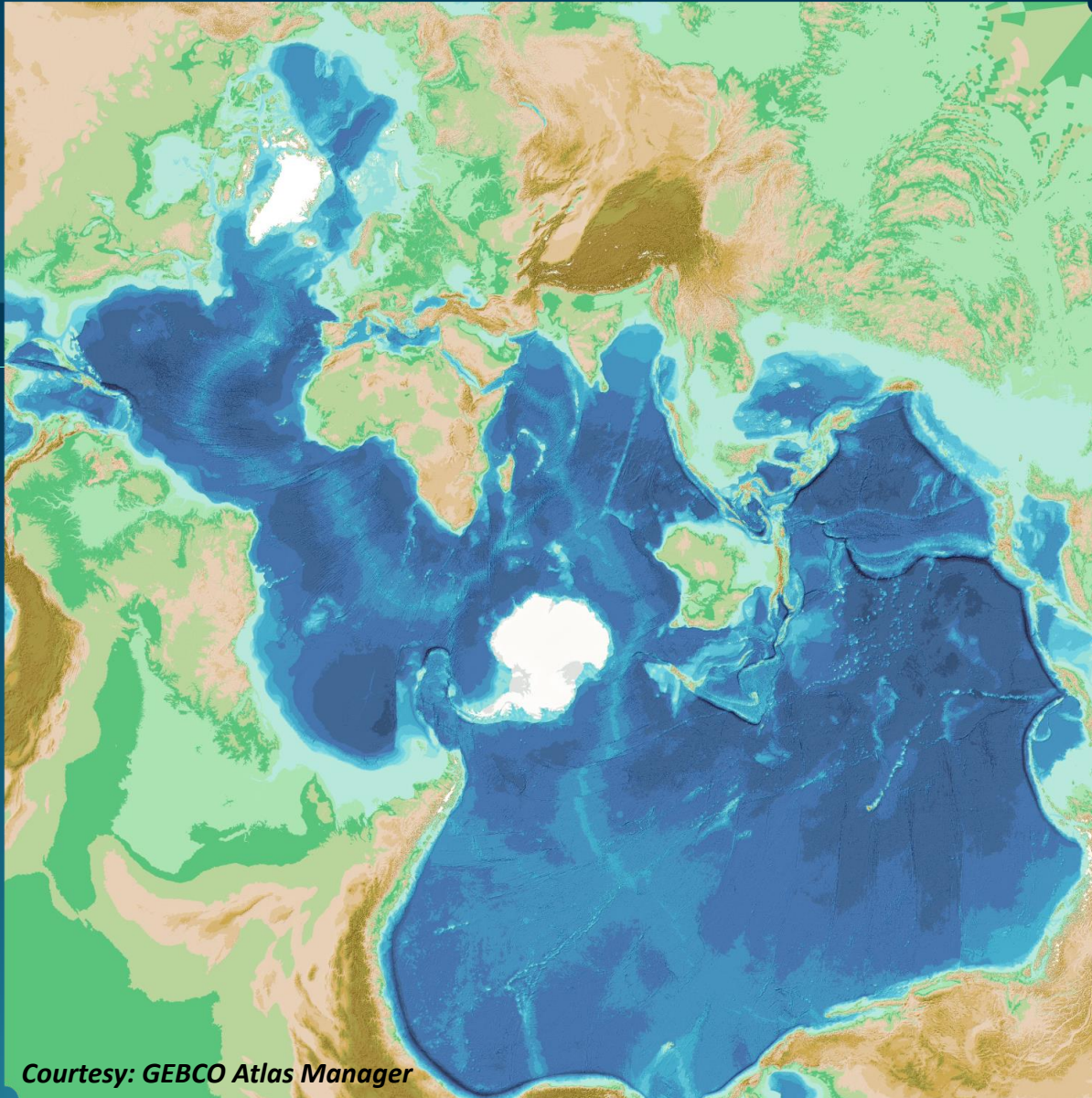
Contact Seabed 2030 via admin@seabed2030.org

Seabed 2030 Study – Online Survey

- Development of benefits analysis and prioritization modelling on global scale
- Seeking views from hydrographic & oceanographic authorities
- Via:
 - IOC CL 2937
 - IHO CL 11/2023
- 58 country responses
 - *Happy to receive more*



Seabed 2030 website: <https://seabed2030.org/news/calling-all-hydrographic-and-oceanographic-authorities>
Seabed 2030 Study Questionnaire: <https://www.surveymonkey.com/r/S2030Survey>



Courtesy: GEBCO Atlas Manager

It really is

Our One Ocean!

Seabed 2030 Vision:

**100% of our Ocean Floor
mapped by 2030**

Thank you

