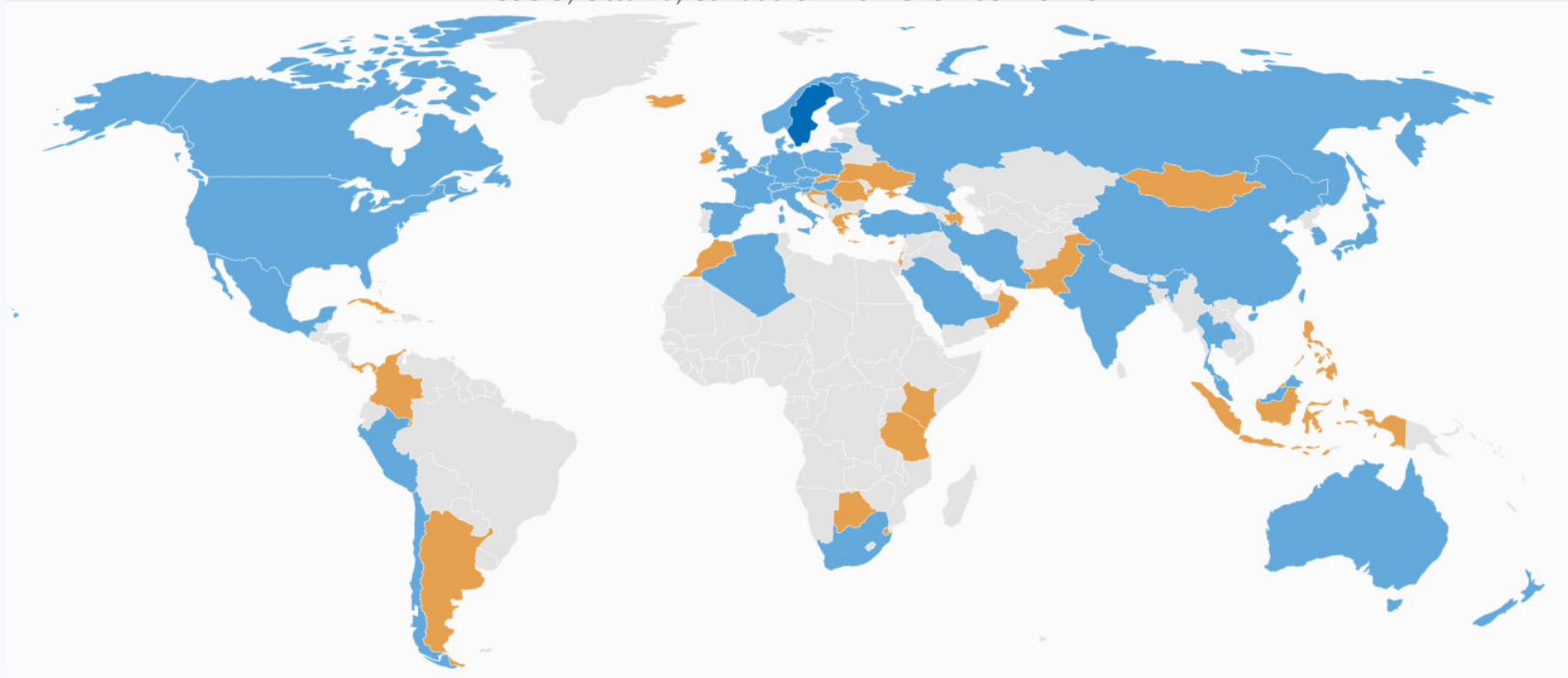


Report on ISO/TC211

HSSC-9, Ottawa, Canada 6 – 10 November 2017c



Secretariat ■

Sweden - Swedish Standards Institute (SIS)

Participating Members (38) ■

Observing Members (30) ■



International Hydrographic Organization
Organisation Hydrographique Internationale

HSSC-9, Ottawa, Canada 6 – 10 November 2017c

About the ISO/TC211 – Class A Members

The Calendaring and Scheduling Consortium

Committee on Earth Observation Satellites

Defence Geospatial Information Working Group

European Commission

Energistics

European Space Agency

European Umbrella Organisation for Geographic Information

European Spatial Data Research

Food and Agriculture Organization of the United Nations

International Federation of Surveyors

Global Spatial Data Infrastructure (GSDI) Secretariat

International Association of Geodesy

International Cartographic Association

International Civil Aviation Organization

Institute of Electrical and Electronics Engineers, Inc

International Hydrographic Organisation

International Association of Oil and Gas Producers

International Society for Photogrammetry and Remote Sensing

Organization for the Advancement of Structured Information Standards (OASIS)

Open Geospatial Consortium, Inc.

Object Management Group

Pan-American Institute of Geography and History (PAIGH)

Small Business Standards

Scientific Committee on Antarctic Research

The World Bank Group

United Nations

Comité regional de las naciones unidas sobre la gestion global de informacion geoespacial para las Américas

Regional Committee of United Nations Global Geospatial Information Management for Asia and the Pacific

UN Economic Commission for Africa

United Nations Economic Commission for Europe

United Nations Group of Experts on Geographical Names

United Nations Geographic Information Working Group

Universal Postal Union

World Meteorological Organization



Problems or outstanding issues

Experience gained with implementing S-100;

The IHO (multi domain) Registry - deficiencies with ISO 19126 (*Feature concept dictionaries and registers*).

Implementation of S-121 - revision of 19152 (*Land Administration Domain Model (LADM)*) to include spatial types.



ISO/TC211 – Harmonized Model

Welcome to the ISO/TC211 HMMG Wiki

The purpose of this wiki is to inform users and editors of the ISO/TC211 Harmonized Model how to connect to and work with the model.

[Naming conventions for packages in the HM](#)

[About Subversion and Enterprise Architect](#)

A short description of subversion and how it is used for version control in the Harmonized Model, with further links for more information.

[Connecting to the Harmonized Model Repository](#)

A description of how to connect to the Harmonized Model repository and access it in Enterprise Architect.

For editors: [Editing the Harmonized Model](#)

A description on how to work on the Harmonized Model in Enterprise Architect

Pages

- Home
- About Subversion and Enterprise Architect
- Connecting to the Harmonized Model Repository
- Editing the Harmonized Model
- Moving and renaming XMI files in SVN
- Package naming conventions
- Prefixes
- Structure of the Harmonized Model

Clone this wiki locally

<https://github.com/ISO-TC211>

Clone in Desktop

<https://github.com/ISO-TC211/HMMG/wiki>

ISO/TC211 Geographic information/Geomatics

The Harmonized Model Maintenance Group

The ISO/TC211 Harmonized Model Management Group (HMMG) maintains this repository for use by the members of the ISO TC 211 community in the assessment and creation of standards.

See the [HMMG Wiki](#) for information about the Harmonized Model Repository and how to use it, including how to set up an Enterprise Architect project linked to the official subversion repository.

The models may be downloaded from folders in this repository:

- [EA](#): Enterprise Architect Projects with The Harmonized Model
- [XMI](#): XMI Files for packages in The Harmonized Model

A HTML view of the model can be found for [Conceptual models](#) and [Implementation Models](#).

See also <https://github.com/ISO-TC211/UML-Best-Practices> and the wiki <https://github.com/ISO-TC211/UML-Best-Practices/wiki> for best practices on using UML for geographic information.

To report any technical errors in the models or in the scripts and macros, or to make contributions to this site, please contact the HMMG chairs:

- [Dr. John R. Herring, USA](#)
- [Mr. Knut Jetlund, Norway.](#)



International Hydrographic Organization
Organisation Hydrographique Internationale

HSSC-9, Ottawa, Canada 6 – 10 November 2017

ISO/TC211 – Harmonized Model

Welcome to the ISO/TC211 HMMG Wiki

The purpose of this wiki is to inform users and editors of the ISO/TC211 Harmonized Model how to connect to and work with the model.

Naming conventions for packages in the HM

About Subversion and Enterprise Architect

A short description of subversion and how it is used for version control in the Harmonized Model, with further links for more information.

Connecting to the Harmonized Model Repository

A description of how to connect to the Harmonized Model repository and access it in Enterprise Architect.

For editors: Editing the Harmonized Model

A description on how to work on the Harmonized Model in Enterprise Architect

Pages

- Home
- About Subversion and Enterprise Architect
- Connecting to the Harmonized Model Repository
- Editing the Harmonized Model
- Moving and renaming XMI files in SVN
- Package naming conventions
- Prefixes
- Structure of the Harmonized Model

Clone this wiki locally

<https://github.com/ISO-TC211>

Clone in Desktop

ISO/TC211 Geographic information/Geomatics

The Harmonized Model Maintenance Group

The ISO/TC211 Harmonized Model Management Group (HMMG) maintains this repository for use by the members of the ISO TC 211 community in the assessment and creation of standards.

See the [HMMG Wiki](#) for information about the Harmonized Model Repository and how to use it, including how to set up an Enterprise Architect project linked to the official subversion repository.

The models may be downloaded from folders in this repository:

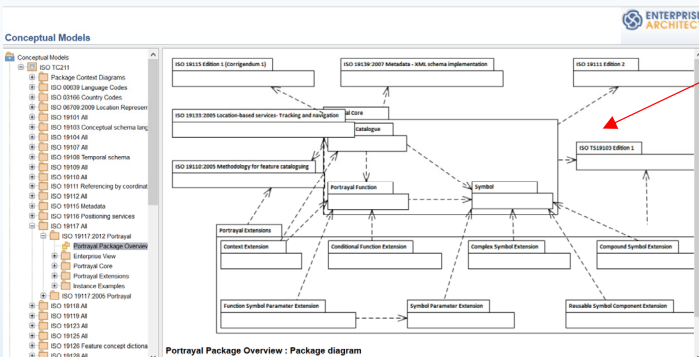
- **EA:** Enterprise Architect Projects with The Harmonized Model
- **XMI:** XMI Files for packages in The Harmonized Model

A [HTML view of the model](#) can be found for [Conceptual models](#) and [Implementation Models](#).

See also <https://github.com/ISO-TC211/UML-Best-Practices> and the wiki <https://github.com/ISO-TC211/UML-Best-Practices/wiki> for best practices on using UML for geographic information.

To report any technical errors in the models or in the scripts and macros, or to make contributions to this site, please contact the HMMG chairs:

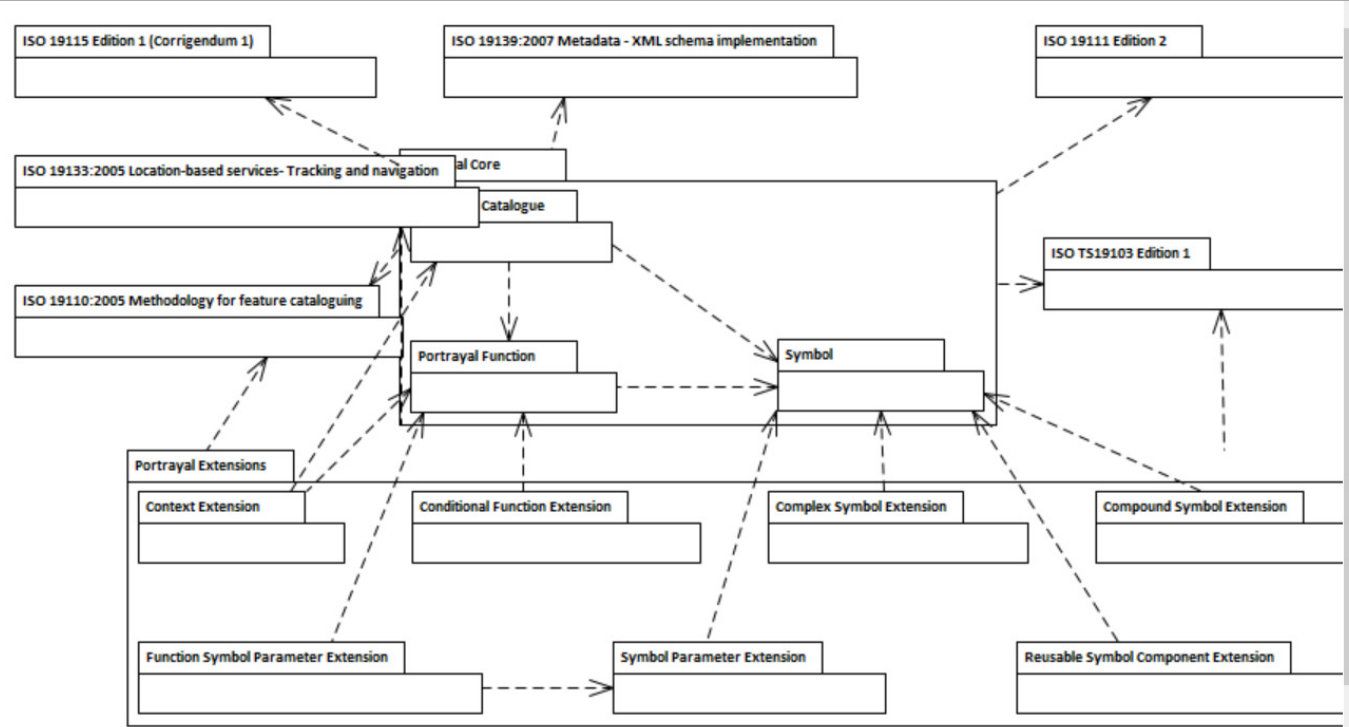
- **Dr. John R. Herring, USA**
- **Mr. Knut Jetlund, Norway.**



ISO/TC211 – Harmonized Model

Conceptual Models

- Conceptual Models
 - ISO TC211
 - Package Context Diagrams
 - ISO 00639 Language Codes
 - ISO 03166 Country Codes
 - ISO 06709:2009 Location Represent
 - ISO 19101 All
 - ISO 19103 Conceptual schema lang
 - ISO 19104 All
 - ISO 19107 All
 - ISO 19108 Temporal schema
 - ISO 19109 All
 - ISO 19110 All
 - ISO 19111 Referencing by coordinat
 - ISO 19112 All
 - ISO 19115 Metadata
 - ISO 19116 Positioning services
 - ISO 19117 All
 - ISO 19117:2012 Portrayal
 - Portrayal Package Overview
 - Enterprise View
 - Portrayal Core
 - Portrayal Extensions
 - Instance Examples
 - ISO 19117:2005 Portrayal
 - ISO 19118 All
 - ISO 19119 All
 - ISO 19123 All
 - ISO 19125 All
 - ISO 19126 Feature concept dictiona
 - ISO 19128 All

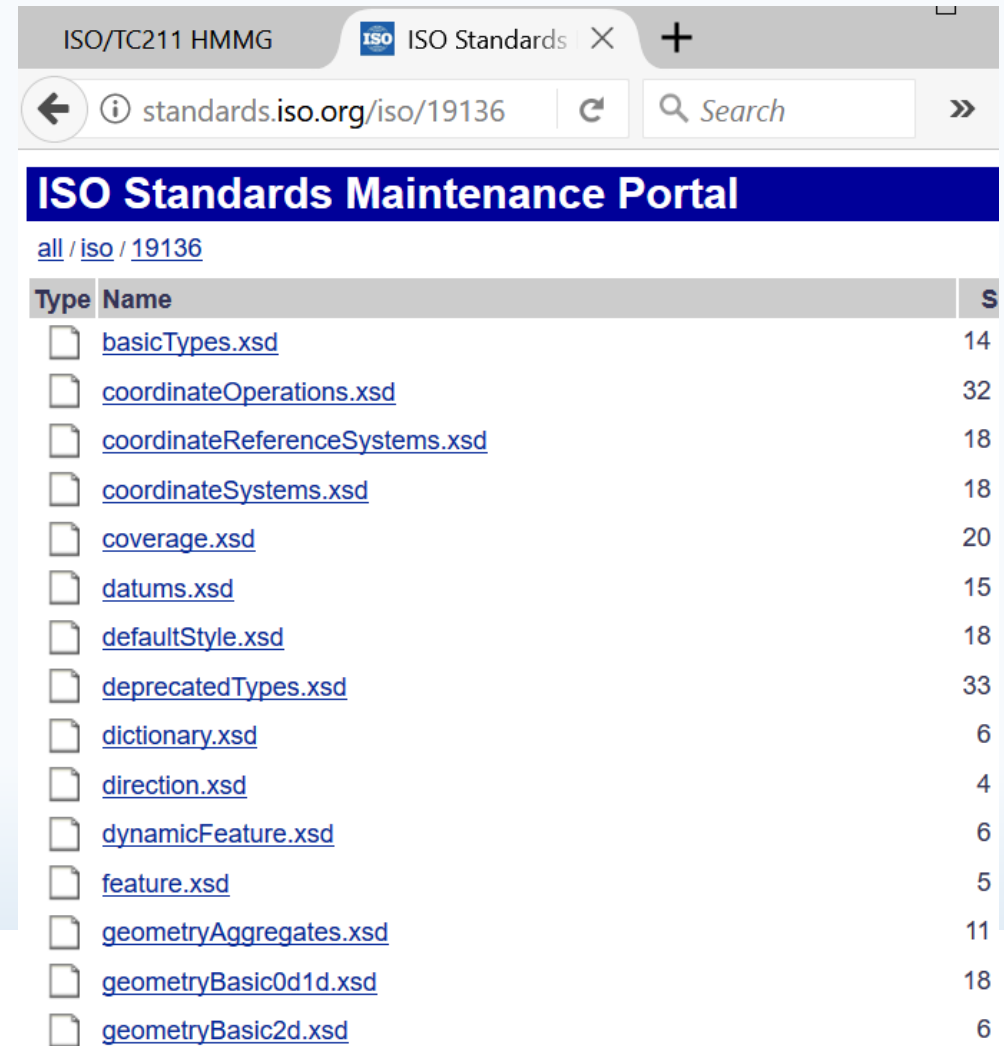


Portrayal Package Overview : Package diagram



ISO/TC211 – XML Schema repository

The ISO TC211 XML Schema repository is located at <http://standards.iso.org/iso>.



The screenshot shows a web browser window with the address bar displaying "standards.iso.org/iso/19136". The page title is "ISO Standards Maintenance Portal". Below the title, there is a breadcrumb trail "all / iso / 19136". A table lists various XML Schema files with their names and counts.

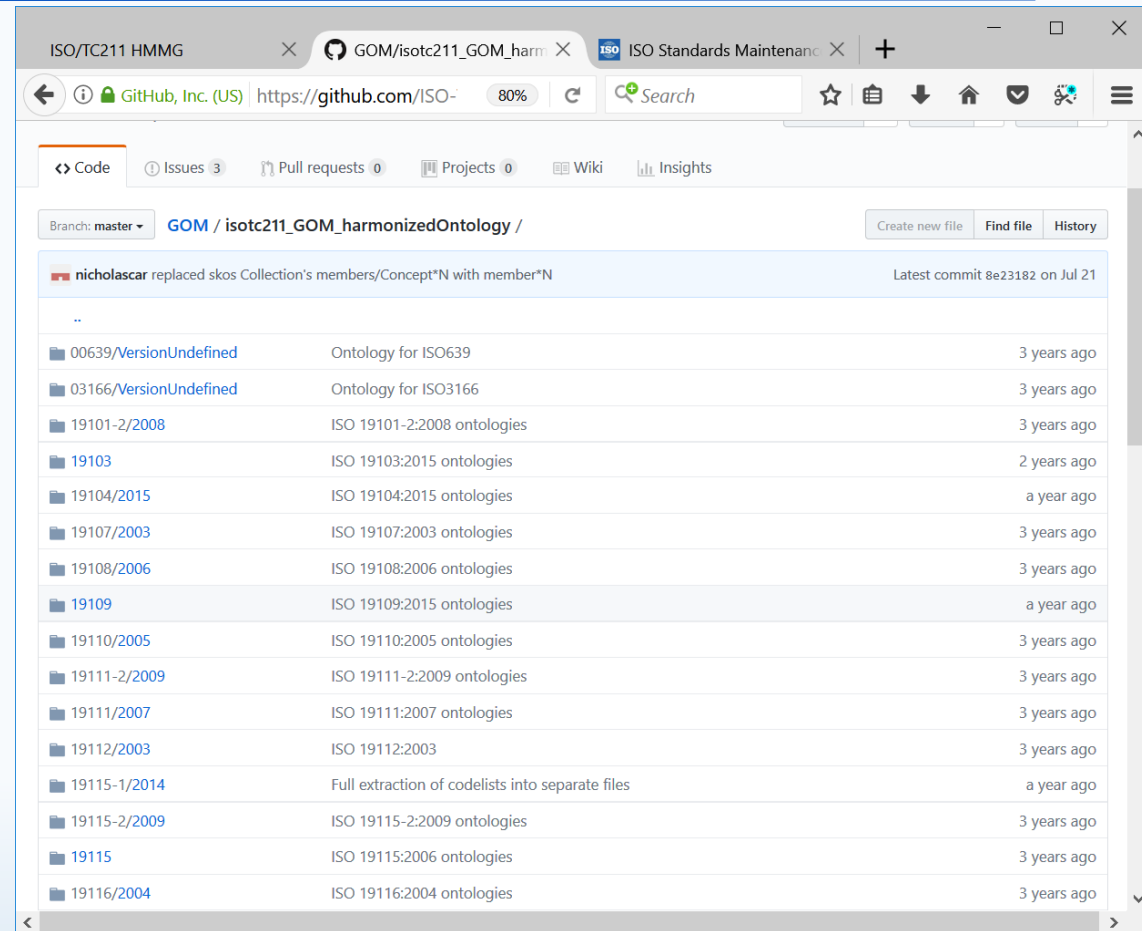
Type	Name	S
📄	basicTypes.xsd	14
📄	coordinateOperations.xsd	32
📄	coordinateReferenceSystems.xsd	18
📄	coordinateSystems.xsd	18
📄	coverage.xsd	20
📄	datums.xsd	15
📄	defaultStyle.xsd	18
📄	deprecatedTypes.xsd	33
📄	dictionary.xsd	6
📄	direction.xsd	4
📄	dynamicFeature.xsd	6
📄	feature.xsd	5
📄	geometryAggregates.xsd	11
📄	geometryBasic0d1d.xsd	18
📄	geometryBasic2d.xsd	6



International Hydrographic Organization
Organisation Hydrographique Internationale

ISO/TC211 – XML Schema repository

Ontology representations of the
ISO TC211 Standards
<https://github.com/ISO-TC211/GOM>



ISO/TC211 HMMG

Branch: master | GOM / isotc211_GOM_harmonizedOntology /

Latest commit 8e23182 on Jul 21

Folder Name	Description	Last Commit
00639/VersionUndefined	Ontology for ISO639	3 years ago
03166/VersionUndefined	Ontology for ISO3166	3 years ago
19101-2/2008	ISO 19101-2:2008 ontologies	3 years ago
19103	ISO 19103:2015 ontologies	2 years ago
19104/2015	ISO 19104:2015 ontologies	a year ago
19107/2003	ISO 19107:2003 ontologies	3 years ago
19108/2006	ISO 19108:2006 ontologies	3 years ago
19109	ISO 19109:2015 ontologies	a year ago
19110/2005	ISO 19110:2005 ontologies	3 years ago
19111-2/2009	ISO 19111-2:2009 ontologies	3 years ago
19111/2007	ISO 19111:2007 ontologies	3 years ago
19112/2003	ISO 19112:2003	3 years ago
19115-1/2014	Full extraction of codelists into separate files	a year ago
19115-2/2009	ISO 19115-2:2009 ontologies	3 years ago
19115	ISO 19115:2006 ontologies	3 years ago
19116/2004	ISO 19116:2004 ontologies	3 years ago



ISO/TC211 - Resources

ISO Registry of Geodetic Codes and Parameters

*** DEMONSTRATION VERSION ONLY ***

This registry is for demonstration purposes only. The current content of the registry is provided only to demonstrate the features and capabilities of the registry software.

The registry content should NOT be used for any other purposes.

In no way should the content be considered valid data!

Geodetic Codes & Parameters

Overview Contents

Show 10 items per page

Search

Item ID	Name	Item class	Status
4171	RGF93	Geodetic CRS	valid
4230	ED50	Geodetic CRS	valid
4258	ETRS89	Geodetic CRS	valid
4267	NAD27	Geodetic CRS	valid
4269	NAD83	Geodetic CRS	valid
4275	NTF	Geodetic CRS	valid

ISO/TC211 – Geodetic Codes and Parameters Registry



Action Required of HSSC

The HSSC is invited to:

- a. note the paper,
- b. take any other actions considered necessary.

