

Danish MSDI



The Danish Maritime Spatial Data Infrastructure (MSDI)

Geo Data of the Sea

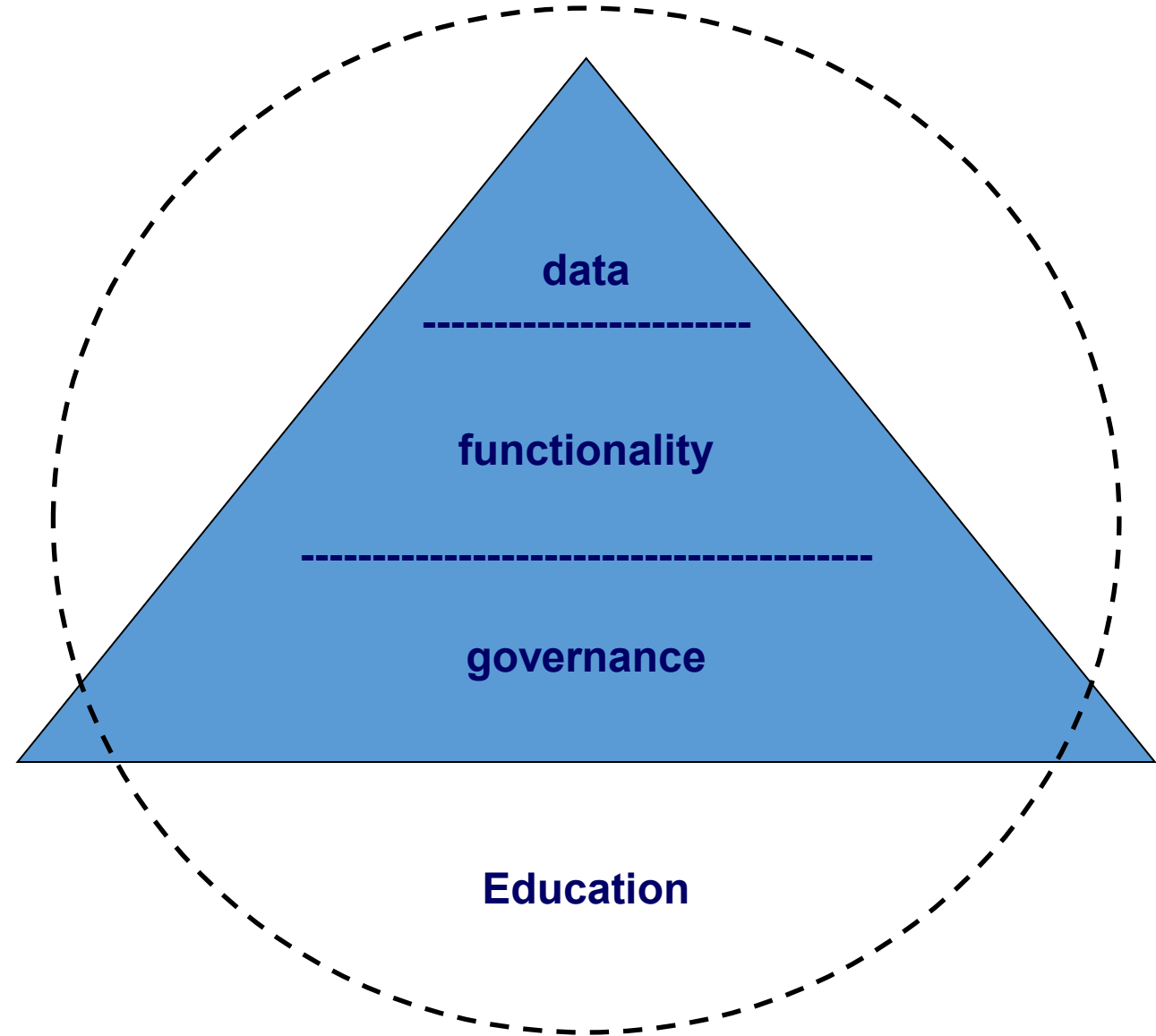
Components of an infrastructure:

DATA - metadata, datasets

FUNCTIONALITY - spatial data services, web services and other technology

GOVERNANCE - Agreements and Organisation – rights and access

Education



Maritime spatial planning

Article 6

Minimum requirements for maritime spatial planning

Member States shall establish procedural steps to contribute to the objectives listed in Article 5, taking into account relevant activities and uses in marine waters:

- (e) **Organise the use of the best available data** in accordance with **Article 10**.
- (f) **Ensure trans-boundary cooperation** between Member States in accordance with **Article 12**.
- (g) **Promote cooperation with third countries** in accordance with **Article 13**.

28.8.2014

EN

Official Journal of the European Union

L 257/135

DIRECTIVES

DIRECTIVE 2014/89/EU OF THE EUROPEAN PARLIAMENT AND OF THE COUNCIL of 23 July 2014

establishing a framework for maritime spatial planning

THE EUROPEAN PARLIAMENT AND THE COUNCIL OF THE EUROPEAN UNION,

Having regard to the Treaty on the Functioning of the European Union, and in particular Articles 43(2), 100(2), 192(1), and 194(2) thereof,

Having regard to the proposal from the European Commission,

After transmission of the draft legislative act to the national parliaments,

Having regard to the opinion of the European Economic and Social Committee ⁽¹⁾,

Having regard to the opinion of the Committee of the Regions ⁽²⁾,

Acting in accordance with the ordinary legislative procedure ⁽³⁾,

Whereas:

- (1) The high and rapidly increasing demand for maritime space for different purposes, such as installations for the production of energy from renewable sources, oil and gas exploration and exploitation, maritime shipping and fishing activities, ecosystem and biodiversity conservation, the extraction of raw materials, tourism, aquaculture installations and underwater cultural heritage, as well as the multiple pressures on coastal resources, require an integrated planning and management approach.
- (2) Such an approach to ocean management and maritime governance has been developed in the Integrated Maritime Policy for the European Union (IMP), including as its environmental pillar, Directive 2008/56/EC of the European Parliament and of the Council ⁽⁴⁾. The objective of the IMP is to support the sustainable development of seas and oceans and to develop coordinated, coherent and transparent decision-making in relation to the Union's sectoral policies affecting the oceans, seas, islands, coastal and outermost regions and maritime sectors, including through sea-basin strategies or macro-regional strategies, whilst achieving good environmental status as set out in Directive 2008/56/EC.
- (3) The IMP identifies maritime spatial planning as a cross-cutting policy tool enabling public authorities and stakeholders to apply a coordinated, integrated and trans-boundary approach. The application of an ecosystem-based approach will contribute to promoting the sustainable development and growth of the maritime and coastal economies and the sustainable use of marine and coastal resources.

⁽¹⁾ OJ C 341, 21.11.2013, p. 67.

⁽²⁾ OJ C 356, 5.12.2013, p. 124.

⁽³⁾ Decision of the European Parliament of 17 April 2014 (not yet published in the Official Journal) and decision of the Council of 23 July 2014.

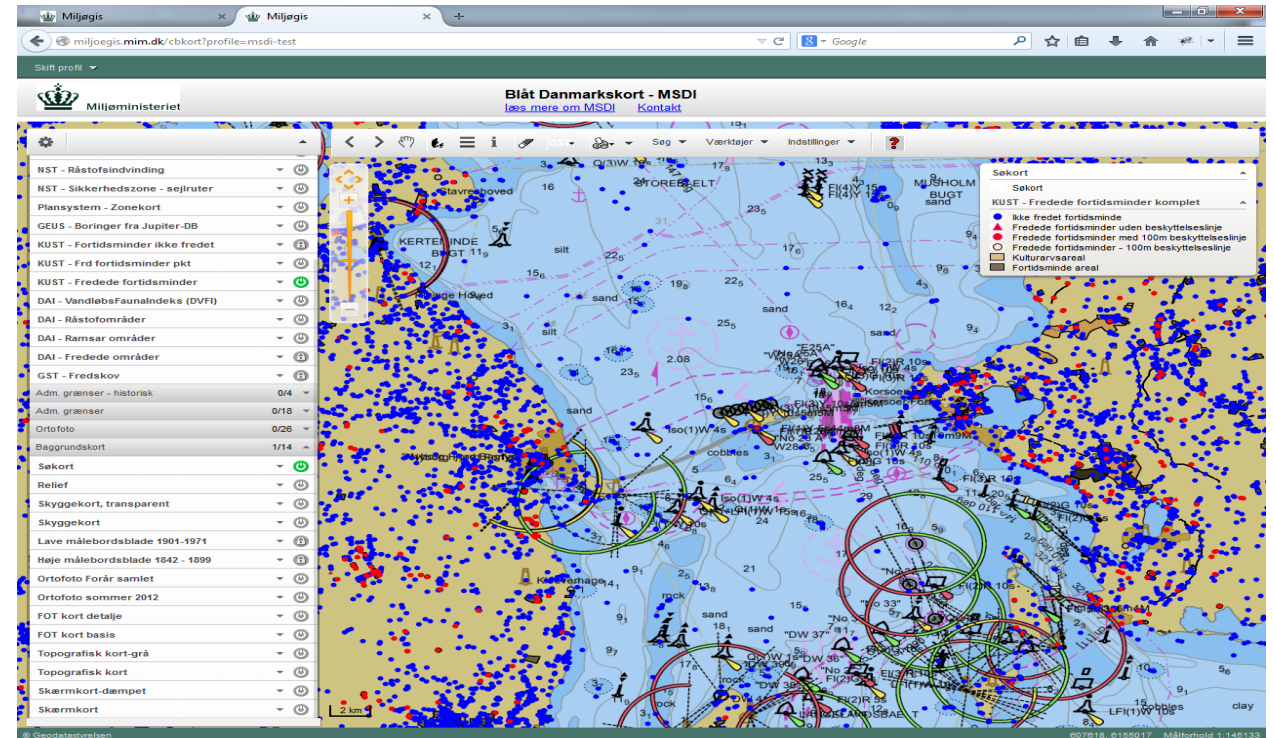
⁽⁴⁾ Directive 2008/56/EC of the European Parliament and of the Council of 17 June 2008 establishing a framework for Community action in the field of marine environmental policy (Marine Strategy Framework Directive) (OJ L 164, 25.6.2008, p. 19).

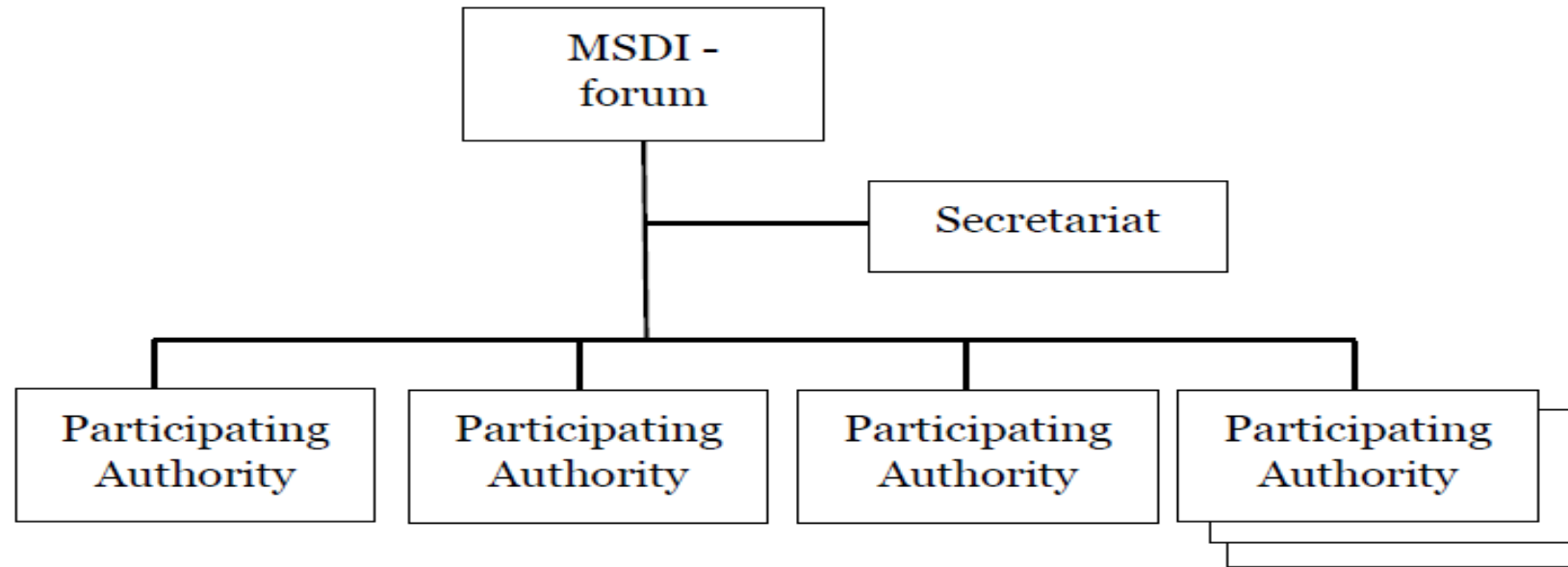
The Danish Components of an infrastructure:

Appendix:

1. **GOVERNANCE** model - Agreements and Organisation – rights and access
2. Financial model
3. **Technical description** – Functionality - spatial data services, web services and other technology, metadata
4. Description of **DATA** – datasets
5. Implementation plan

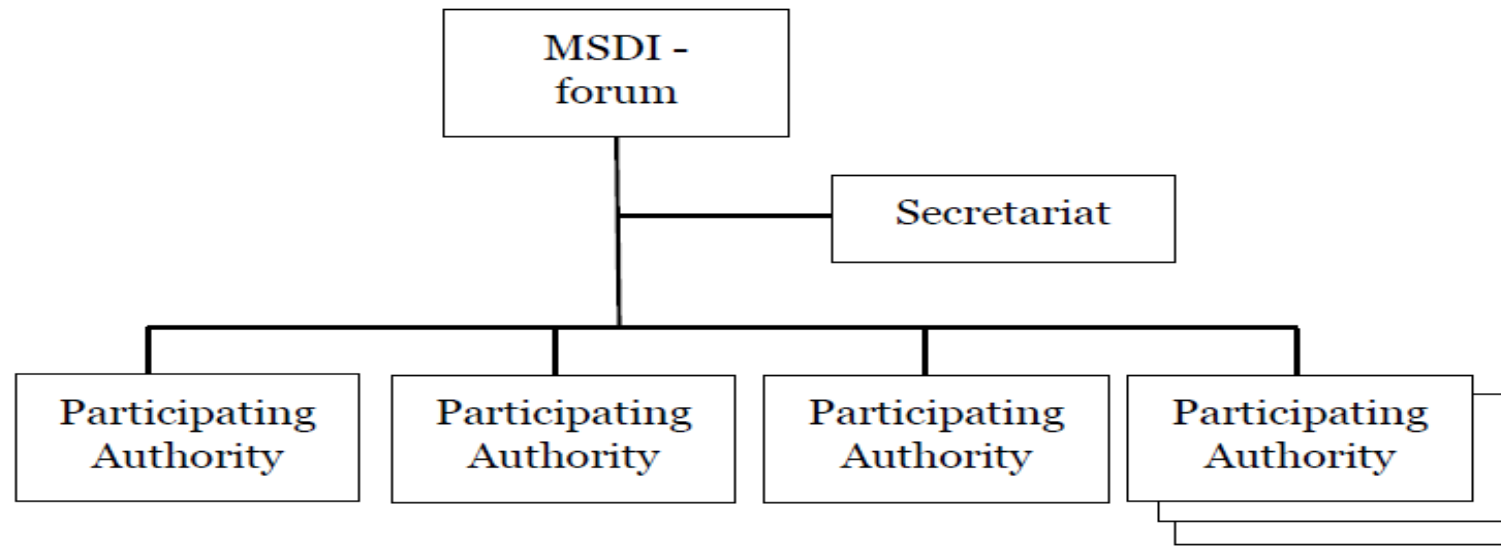
WEB GIS solution – “The Blue Danish sea map”





The MSDI-forum has amongst other tasks to:

- Approve cooperation agreements
- Approve the upcoming yearly budget
- Put forth new proposals to and initiate new developments for within the MSDI area, including to finance small analytical and developmental activities
- Hold meetings in the MSDI-forum based on demand, but at least once a year



The MSDI-secretariat has amongst other tasks to:

- Ensure that standards, services, etc. fulfil the requirements that are described in the technical solution for the MSDI
- Ensure that updates for data and data quality are described and implemented as agreed upon
- Be primary point of contact for technical support for the users of the MSDI
- Propose new initiatives to further develop the MSDI area
- Responsible for the administrative part of the cooperation, hereby, produce cooperation agreements and conduct and prepare documents and draft decisions for meetings in the MSDI-forum
- Offer assistance and training of colleagues to the participating authorities

Obligations for participating authorities

The participating authorities that contribute their data commit to:

- Provide information on metadata and services as agreed upon within the technical description of the MSDI
- Identify a "single point of contact", which the MSDI secretariat can refer to in case of technical problems for an authority
- Participate in the MSDI-forum

Financing

Authorities that want services within the MSDI, pay an annual fee in accordance to the financial model. This applies regardless if a participant provides data or not. Other institutions, such as universities, which, based on agreement with the MSDI-forum, contributes with relevant data to the MSDI, but do not use services from the MSDI, can do this outside of the financial agreement.

Priced data

For some dataset, which will be included in the MSDI, applies that they are priced, such as nautical chart data. It is the individual data owners that set the guidelines for use of their data including access criteria, payment models and international exchange.

Presentations of data sets associated with MSDI and MSP

- Gives an overview of dataset needed for MSP
- Almost 80 datasets identified

ID	Oplæg vedr. datasæt i forbindelse med MSDSI og MSP	P = planlægning K = kortlægning	Type af data (Punkt/Linje/Polygon/Tekst) - (Beskrivelse)	Dataejer	Brugere af Data (begrundelse)	Mulighed for træk fra databaser	Metadata	Ajournering s hyppighed	Ajournering g s årsag
5	Interesser / Planlægningssæne (Nummeringen for planlægningssæneaktivitet)								
6	Akvakultur (nr. 6) (Havbrug inkl. muslingebrug og tangelanlæg)								
7	17 Havbrug	P	Polygon (information)	Naturerhverv	Bruges af FD m.fl.	Nej	Ja		
8	18 Muslingebrug	P	Polygon (information)	Naturerhverv	Bruges af FD m.fl.	Nej	Ja		
9	NY Tangelanlæg	P							
10	Anlæg på havet								
11	Ny Anlæg etableret på søterritoriet med Kystdirektoratets tilladelser herunder (tangelanlæg, Søfly-pladser, ledninger, vrage, bygninger, lystbådehavn, fortøjningsanlæg etc.)	K	Polygoner	KDI					
12	Ny Kystbeskyttelses anlæg	K	Polygoner	KDI					
13	Ny (Kystbeskyttelseskonstruktioner herunder høfder, stenkastning, skråningsbeskyttelse, Kystfodringsstrækninger)	K	Linjer/polygoner	KDI					
14	Anlæg til udvinding af energi og produktion af vedvarende energi (nr. 1)								
15	15 Havvindmøller (anlægs og produktionsoplysninger) (indtegnet i søkort)	P	Linjer (information)	ENS	GST Skibsfart m.m.	DB internet			
16	Ny Havvindmøller (anlægs og produktionsoplysninger) I ENS GIS	P	Polygon (information)	ENS	GST Skibsfart m.m.	Energistyrelsens hjemmeside.			
17	Ny Tilladelser - forunder-søgelse, etablering og tilslutning.	P	Tekst (information)	ENS	GST Skibsfart m.m.	DB internet			
18	Fiskeri (nr. 5)								
19	Ny WMS data for fiskerifartøjer over 12 m.	K		Naturerhverv					
20	16 Bundgarn	P	Linjer (information)	Naturerhverv	Bruges af FD m.fl.	Nej	Ja		
21	22 Fiskerigrænse bundgarn indtegnet i søkort	P	Linjer	Naturerhverv	GST, SFS, Skibsfart m.m.	Nej			
22	Frituftsliv (nr. 11)								
23	Ny Lokale ordensreglementer og politivedtægter kan regulere forholdene i et område	P		Politi					
24	Fælles forvaltnings data								
25	14 DTM	K	Punkter, linjer	GST	SFS, GST Skibsfart m.m.	Kortforsyningen WMS, WFS	Ja		
26	Ny DSM	K	Punkter, linjer	GST		Kortforsyningen WMS, WFS	Ja		
27	20 Nationale grænser (Normale rette basislinjer)	K	Linjer, polygoner	GST	Bruges af andre	Kortforsyningen WMS, WFS	Ja		
28	21 3, 12 og 24 sømlegrænse	K	Linjer, polygoner	GST	Bruges af andre	Kortforsyningen WMS, WFS	Ja		
29	25 KORT10	K	Punkter, linjer, polygoner, tekst, (informati	GST	Bruges af andre	Kortforsyningen WMS, WFS	Ja		
30	Havne (nr. 12)								
31	Ny Havnenes placering (fiskerihavn, erhvervshavn, lystbådehavne inden for samme havneområde)	K	Polygoner	KDI ?					
32	Ny Havnegrænserne på søterritoriet	K	Polygoner	KDI ?					
33	Ny Dybder i havnebassinerne	K		KDI ?					
34	Ny Multiplaceringer for kystnære havneder formentet sømlegrænse	K	Polygoner	KDI ?					



DET BLÅ DANMARKSKORT

MSDI er Danmarks blå danmarkskort. Her kan du finde alt.

[GÅ til kortet >](#)

#dkpol



Elisabeth A. Høglund @MSHøglund
Thorning: "Den person, FN har valgt, har en markant anderledes profil, end jeg kommer med." #dkpol
retweeted by Zeb Meier Witt
Expand

10m



Niels Chr. Bastholm @ncb2008
Thorning: NU koncentrerer jeg mig om Folketinget
jodivofid=8206459 #dkpol
[[Show Summary]]

54t



drunksigningdeaths @drunksigning
Er de tyske flygtninge i sidste ende et resultat af klimaforandringer? #dkpol #dkmedier

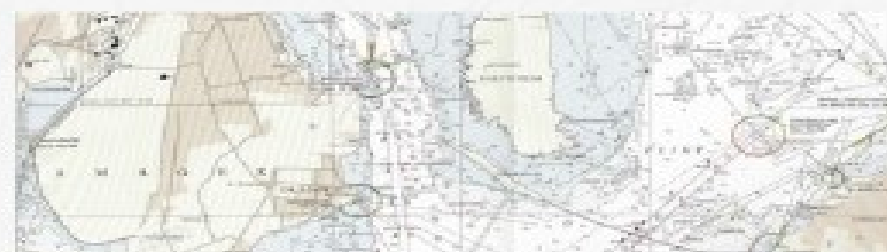
1m



JP Politik @jppolitik
Thorning tæller regeringen for støtte og er stadig kandidat for
@Spolitik på @stenbro #dkpol pic.twitter.com/7VQamLzNHA

1m

Twitter #dkpol



Login for MSDI-medlemmer

Integer posuere erat a ante venenatis dapibus posuere velit aliquet. Morbi leo risus, porta ac consectetur ac, vestibulum at eros. Cras justo odio, dapibus ac facilisis in, egestas eget quam. Sed posuere consectetur est at lobortis.

[GÅ til login](#)



SØFARTSSTYRELSEN

[Link til Søfartsstyrelsens hjemmeside →](#)

KONTAKTOPLYSNINGER

Peter Dam

Titel: Nautisk konsulent

📧 PED@dma.dk

DATASÆT

METADATA	DATA	STATUS
Se metadata	Fiskegrænse-bundgarn indtegnet i søkort (Bekendtgørelsen)	Ikke klarlagt
Se metadata	Skibseffektområder, områder, færverde, løb og rindler som skibe normalt benytter i og uden for anbefalede ruter link bahn bufferzonen i forhold til andre skibe/bater	Ikke klarlagt
Se metadata	Skilbener (af befalede) og skilbestrålssystemer indtegnet på søkort m.m.t.	Ikke klarlagt
Se metadata	Øvrige forbudsområder sprængstoffer excl. Ammunition og sprængstoffer	Ikke klarlagt
Se metadata	Advarselslys rindringsskærmer indtegnet i søkort; tilstedeværelse af ammunition og sprængstoffer	Ikke klarlagt
Se metadata	Ankerpladser indtegnet i søkort	Ikke klarlagt
Se metadata	Lodsbøjsamlingssteder indtegnet i søkort	Ikke klarlagt
Se metadata	Rindler over sejlbart færverd	Ikke klarlagt
Se metadata	Fyr lys, færverdsafmærkning m.m.t. indtegnet i søkort	Ikke klarlagt
Se metadata	Kapsejls bølger officielle indtegnet i søkort	Ikke klarlagt

[» Simple søgning](#) [» Avanceret søgning](#)

Geodata-info.dk gør det muligt at søge og finde relevante geografiske data og tjenester med udgangspunkt i korte, beskrivende oplysninger - metadata.

 Søg efter geografiske data

[» Søg](#)

 Genvej/Browse

Emnekategori

Landbrug
Biota
Grænser
Klimatologi/Meteorologi/Atmosfære
Økonomi
Højde
Miljø
Geovidenskabelig information
Sundhed
Billeder grundkort/Jorddække
Efterretninger/Militær

Dataansvarlig

Agency for Data Supply and Efficiency
Arealdrift, friluftsliv og partnerskaber
Banedanmark
COWI A/S
DCE - Nationalt Center for Miljø og Energi
DCE AU
DCE Aarhus Universitet
DCE - Nationalt center for miljø og energi, Aarhus
DCE-AU
Danish Geodata Agency
Danmarks Meteorologiske Institut



Nyheder

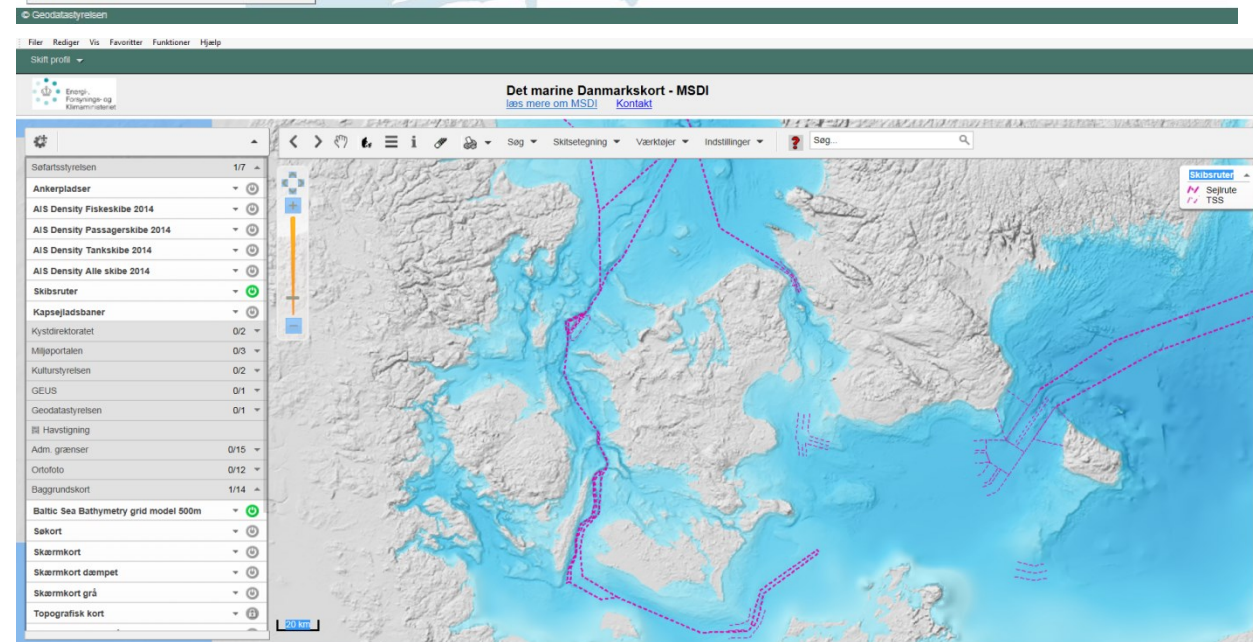
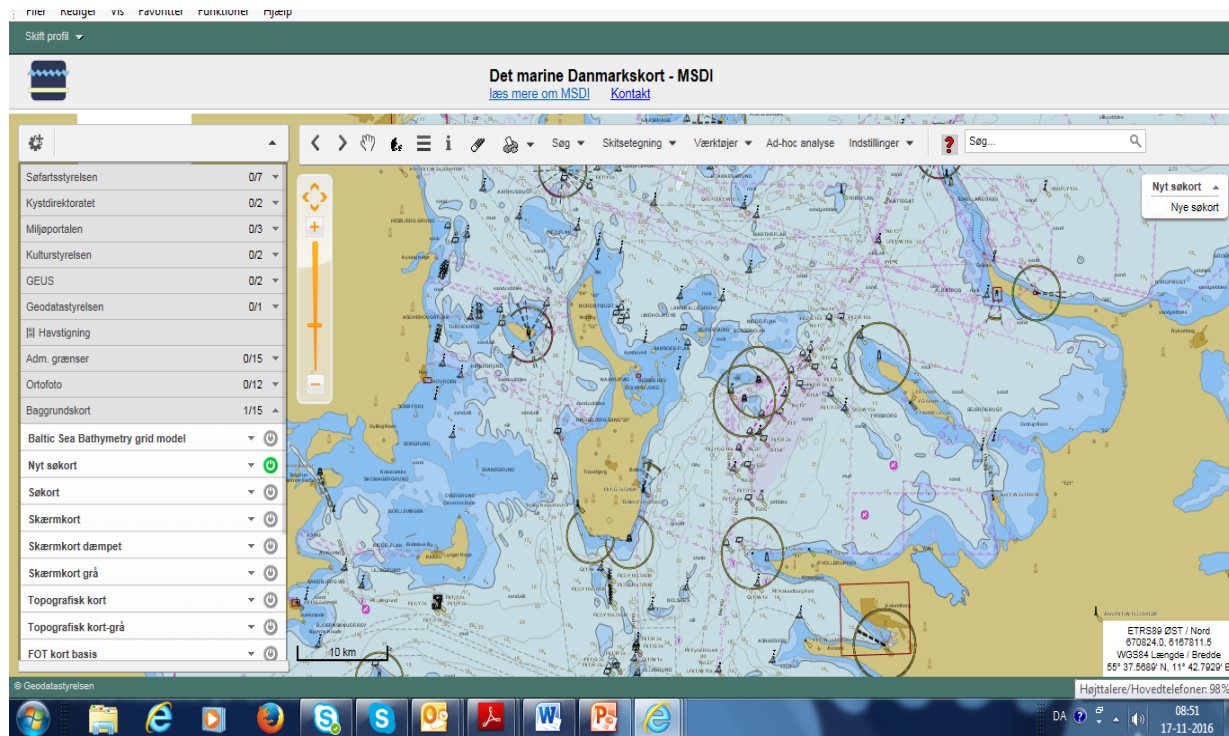
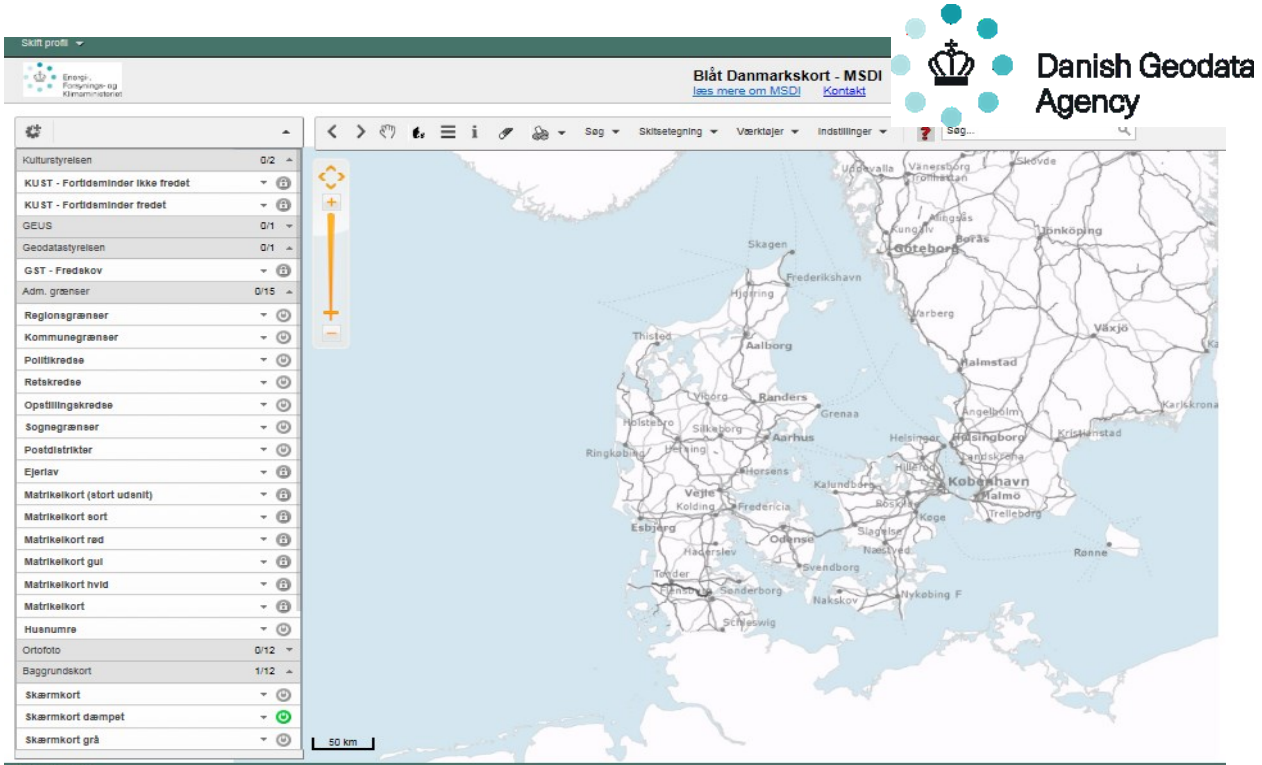
Vejledning om oprettelse af metadata for datasæt er blevet opdateret og suppleret med en videovejledning. Begge findes under menupunktet Hjælp.

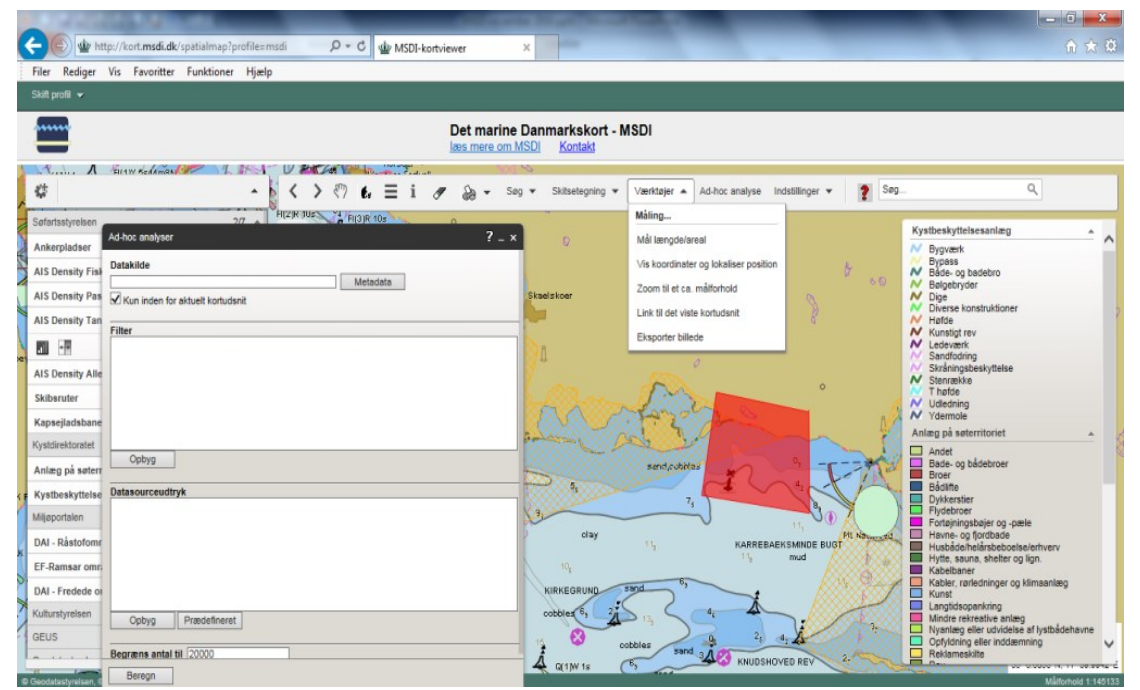
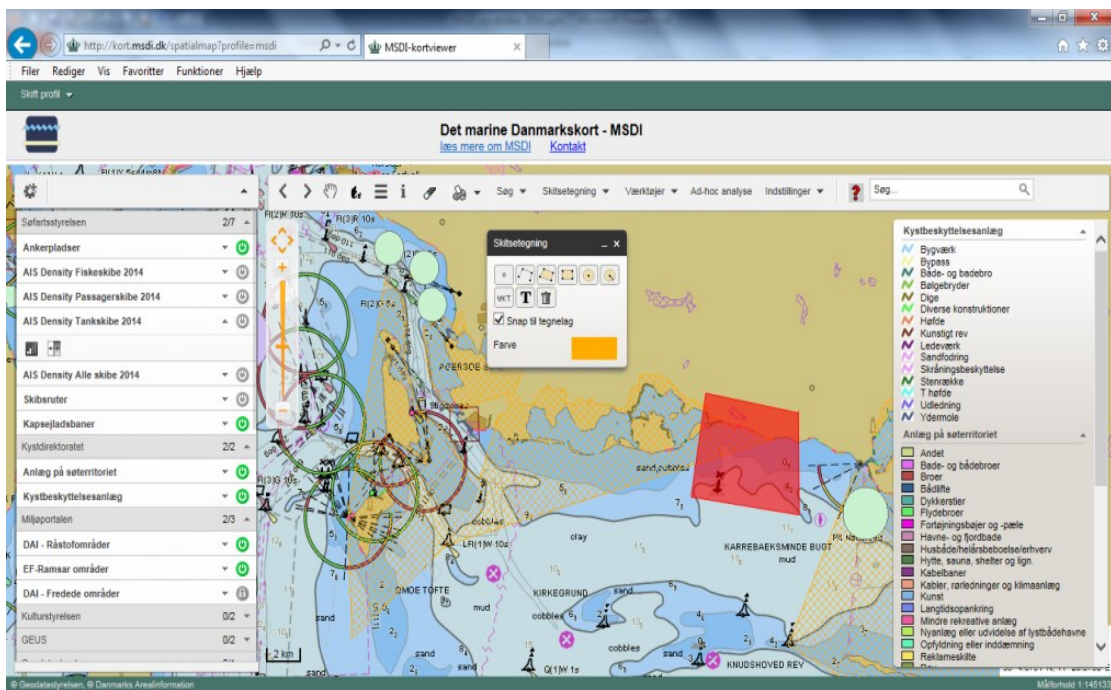
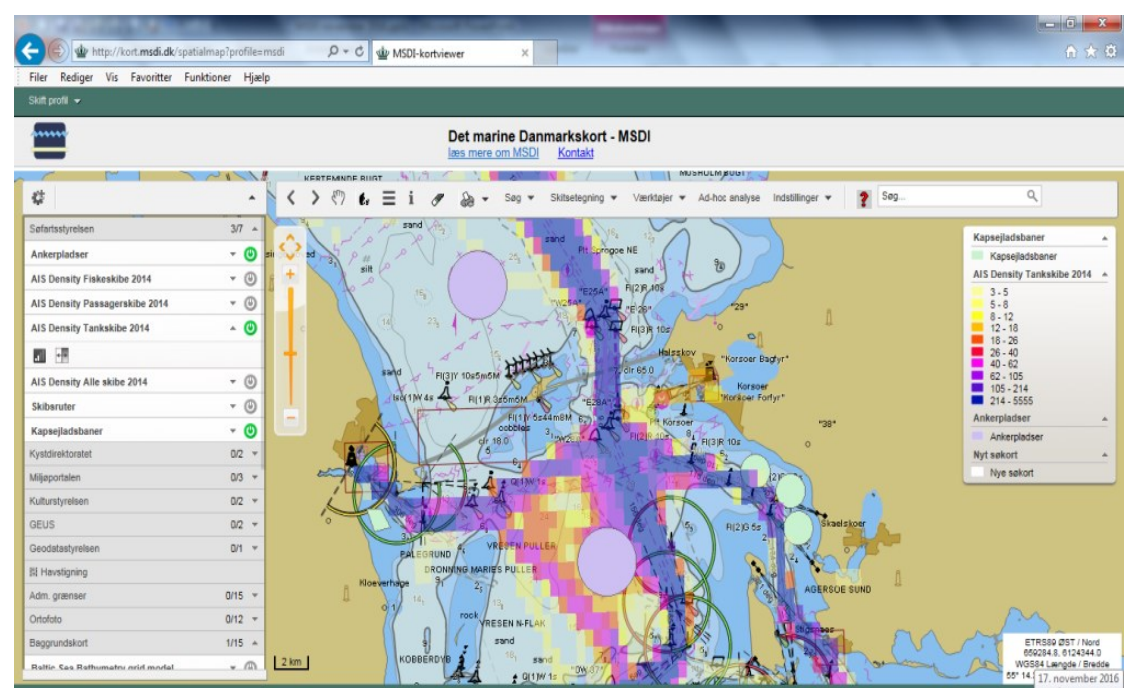
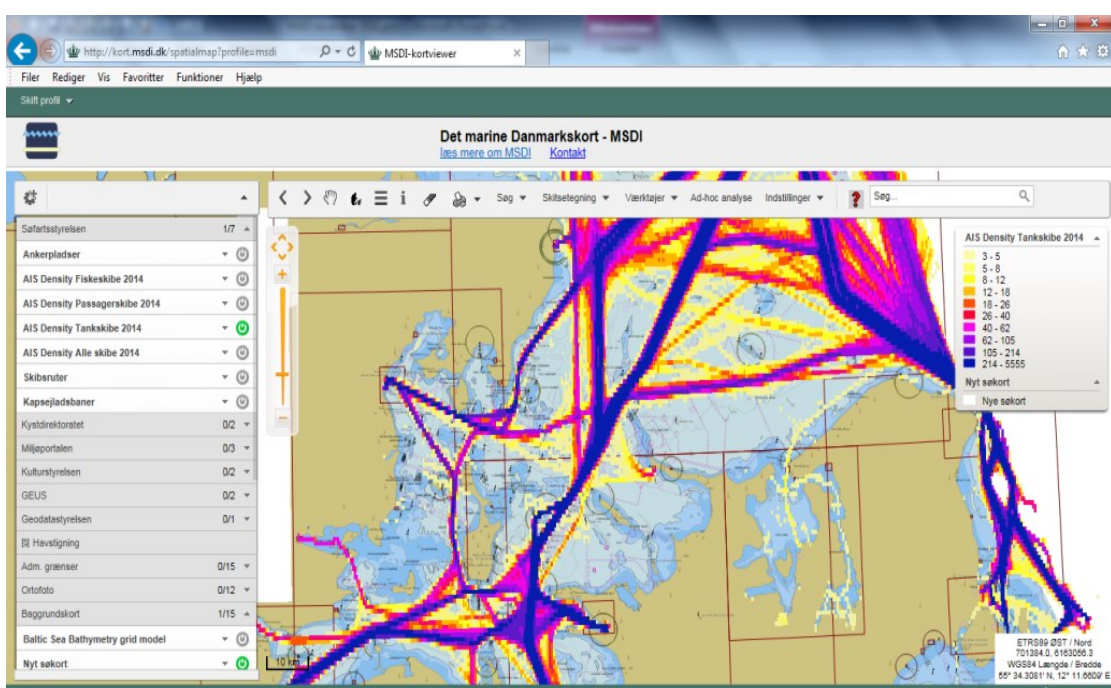


Sidst opdateret

- [WFS for INSPIRE/ELF Land Cover Vector](#)
- [WFS for INSPIRE/ELF Administrative Units](#)
- [WFS for INSPIRE/ELF Geographical Names](#)
- [Natura2000 planer](#)
- [Vandplaner](#)

Access to the Danish MSDI gives the different agencies many opportunities to visualize data and use data



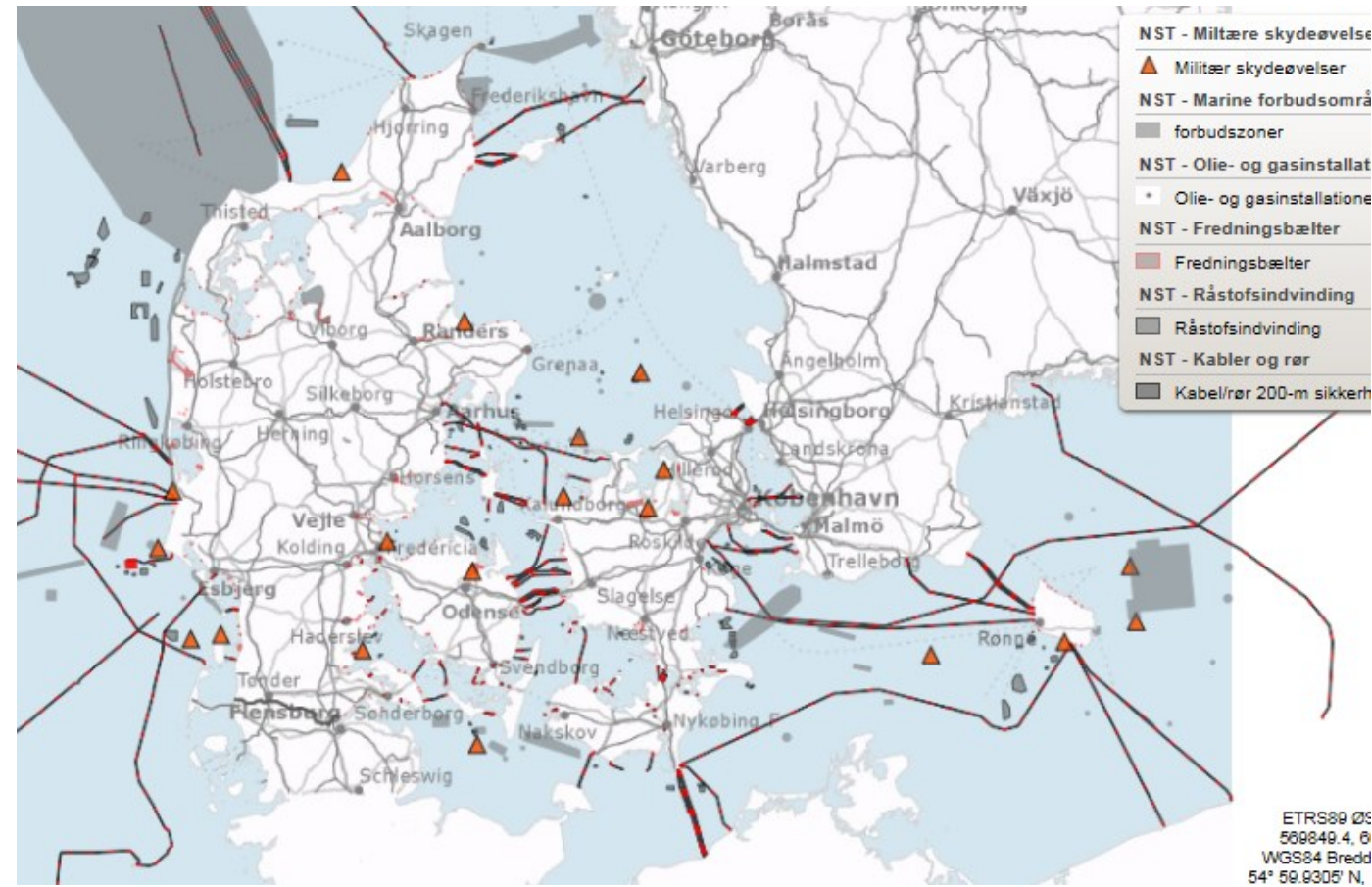
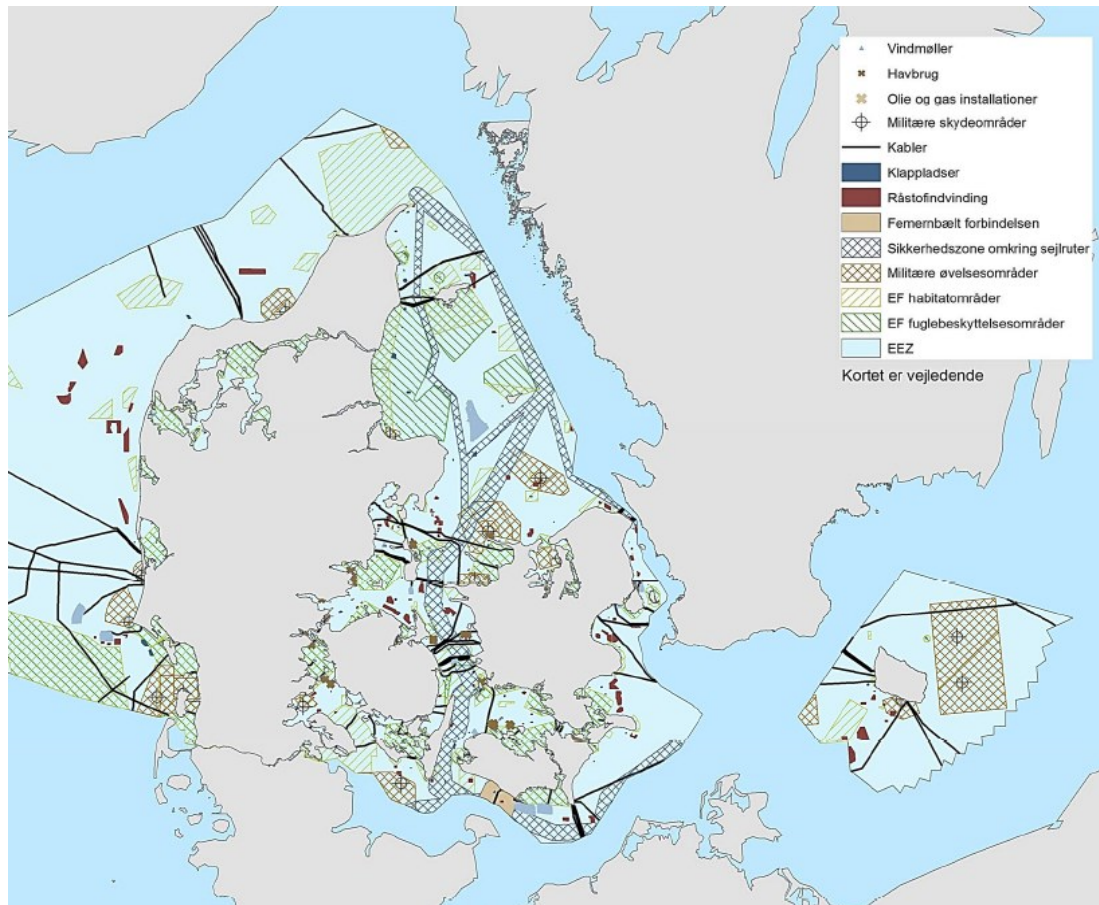


MSDI – seen from a Danish perspective

Planning across borders

MSP data set used for:

- Overview/Charting
- Planning



DEPARTMENT OF IT MANAGEMENT

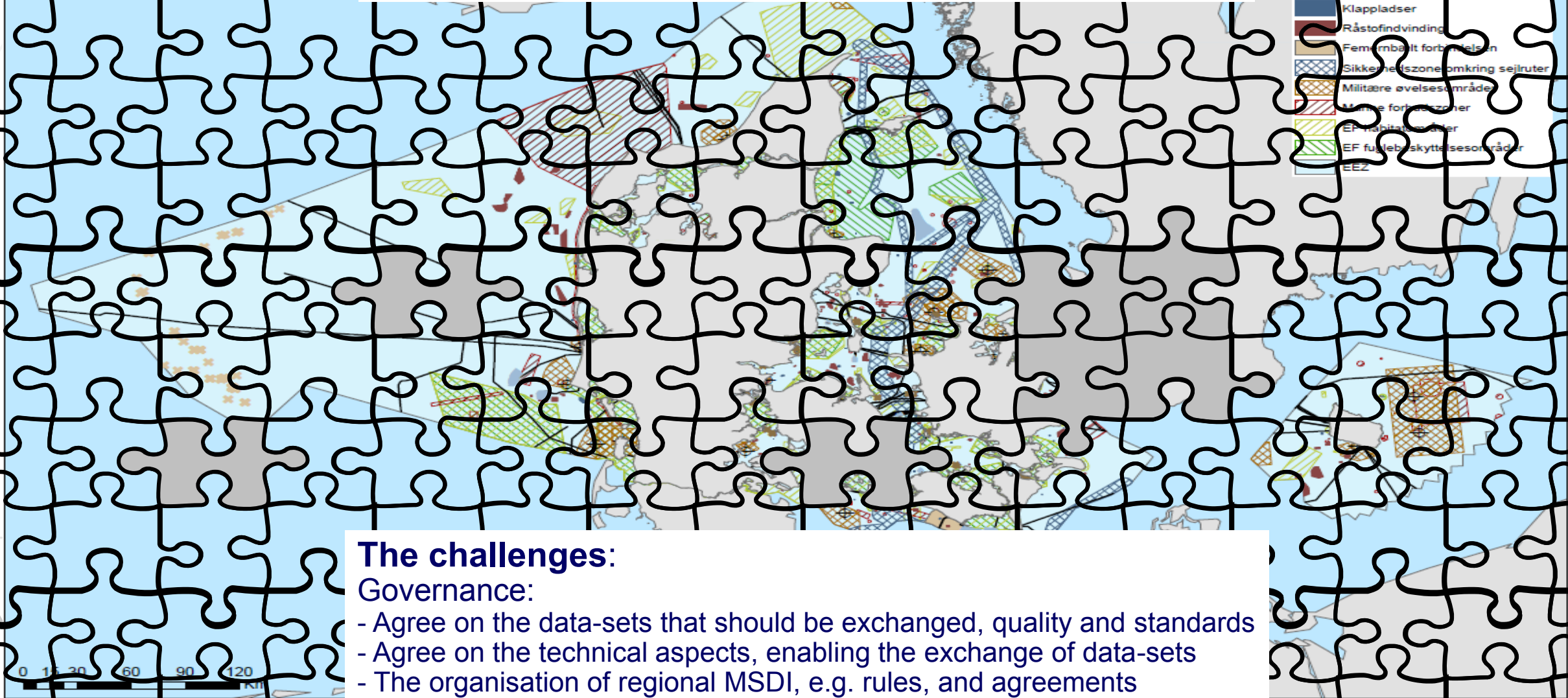
[Staff](#)[Faculty](#)[Publications](#)[Research](#) ▾[In the Media](#)[Research Themes](#)[Seminars and Events](#) ▾[Degree Programmes](#)

Department of IT Management

The department of information technology management is one of the largest of its kind in Europe. Our aspirations are equally grand for our research and for our degree programmes. The department's research concentrates around research themes which are topical, popular, inter-disciplinary and dynamic in nature. Currently ITM focus on social business, open big data, the cashless society, internet of things, and IT in mergers and acquisitions

[Renowned Scholars Seminar Series](#) >[CIO Talks](#) >[Find us](#) >[Connect on Facebook](#) >

“Putting parts of the Marine data puzzle together ...”



The challenges:

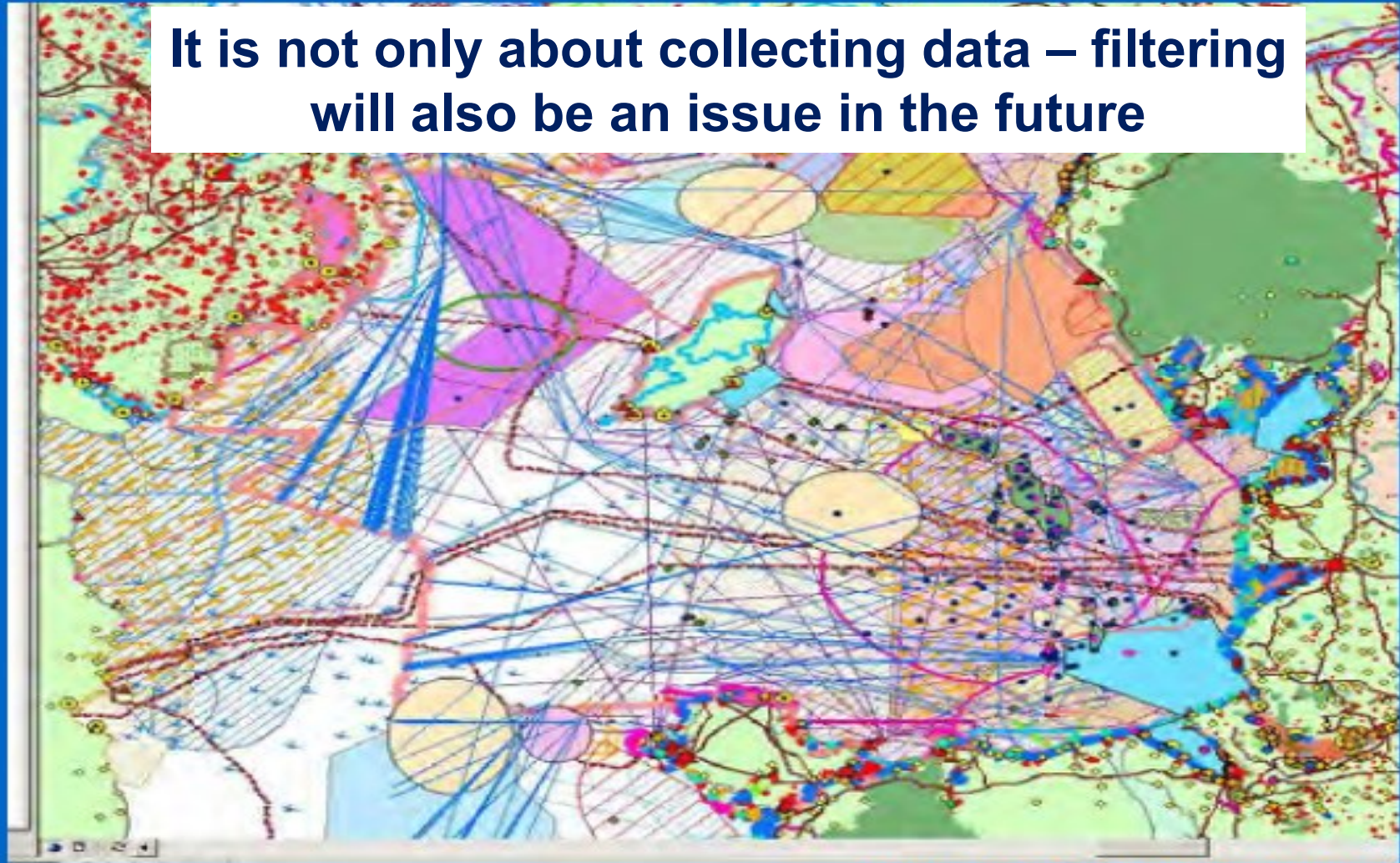
Governance:

- Agree on the data-sets that should be exchanged, quality and standards
- Agree on the technical aspects, enabling the exchange of data-sets
- The organisation of regional MSDI, e.g. rules, and agreements
- Ensure coordination between, different regions and initiatives
- Economy and financial model
- Establishing Metadata

MSDI = accessible data picture that supports activity in the sea and coastal hinterland

- Land Use
- Tourism
- Oil & Gas
- Mariculture
- Coastal Defence
- Ports & Navigation
- Military Activities
- Culture
- Conservation
- Dredging & Disposal
- Submarine Cables

It is not only about collecting data – filtering will also be an issue in the future



Source: Defra Irish Sea Planning Pilot - 2006

■ Fishing

■ Renewable Energy

■ Marine Recreation

■ Mineral Extraction