

REPUBLIC OF SOUTH AFRICA



SAN HYDROGRAPHIC OFFICE

NATIONAL REPORT

TO THE

IHO HYDROGRAPHIC COMMISSION ON ANTARCTICA (HCA)
15TH MEETING, NITEROI, BRAZIL

25 – 28 JUNE 2018

1. SA Navy Hydrographic Office (SANHO)

The SA Hydrographic Service is a government-funded service and is part of the SA Navy. The major assets for the Hydrographic Service are as follows:

- a. One Hecla Class Hydrographic Survey Vessel namely **SAS PROTEA**. She carries on board two smaller survey launches that are deployed for shallow water surveys. There is an additional launch on a trailer and equipment that is used as a mobile survey unit (MSU).
- b. The Hydrographic Office, with the following principle functions: conduct hydrographic surveys, produce paper nautical charts, electronic navigational charts (ENCs) and publications including List of Lights and Radio Services, three volumes of Sailing Directions, maintain a tide gauge network and provide tidal information, collect GEBCO data, issue monthly Notices to Mariners, Radio Navigational Warnings and a Chart Depot service.

2. Oceanographic Activities Nothing to report.

3. Charts and Publications

The South African geographical area of interest in Antarctica is concentrated in Dronning Maud Land and the South African Hydrographic Office has published paper chart SAN 2004 (INT 9056) – Approaches to Dronning Maud Land and an ENC, covering the region between 69° 10' 00"S to 71° 41' 00"S and 05° 30' 00"W to 00° 10' 00"W at a scale of 1:300 000. The standard land area (buff) has been substituted with a greyscale RADARSAT image supplied by the South African Satellite Application Centre (SAC). The main purpose of the chart is to cover the approaches to the area negotiated by scientific research vessels to land scientists and equipment for deployment at the South African Research Station SANAE IV. The bathymetric data within the area of the approaches to Dronning Maud Land is based on satellite derived altimetry and bathymetric contours from the Alfred-Wegener Institute, Germany and trackline bathymetric cruise data from the US National Geophysical Data Centre, Boulder, Colorado, USA (GEODAS) and the South African Department of Environment Affairs Directorate (DEA): Antarctica and Islands, Cape Town.

a. Charts

International (INT) paper chart and ENC. South Africa is the co-ordinator for international charting within Region H but also the producer nation of a single paper chart and an ENC within charting Region M, which is based on the WGS 84 ellipsoid.

Region M:

INT Paper Chart No	SAN No	Title
9056	2004	Antarctica. Approaches to Dronning Maud Land

ENC

ZA300300, based on SAN 2004.

A new edition of SAN 2004 (INT 9056) was published in September 2012 based on a much-improved geo-referenced TerraSAR-X image of 2011 (*Figure 1*) and the corresponding ENC ZA300300 (*Figure 2*).

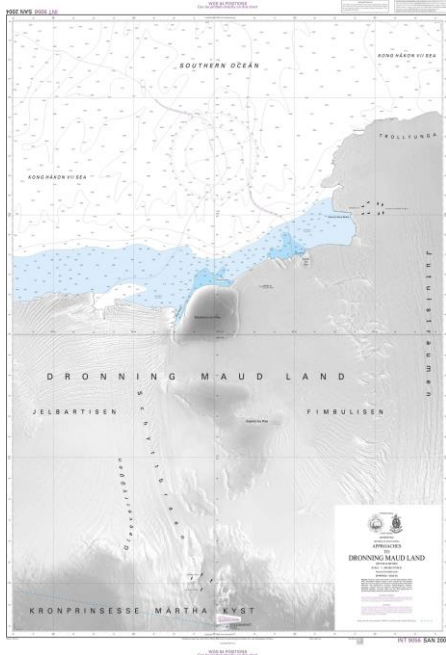


Figure 1. Paper Chart SAN 2004-INT 9056

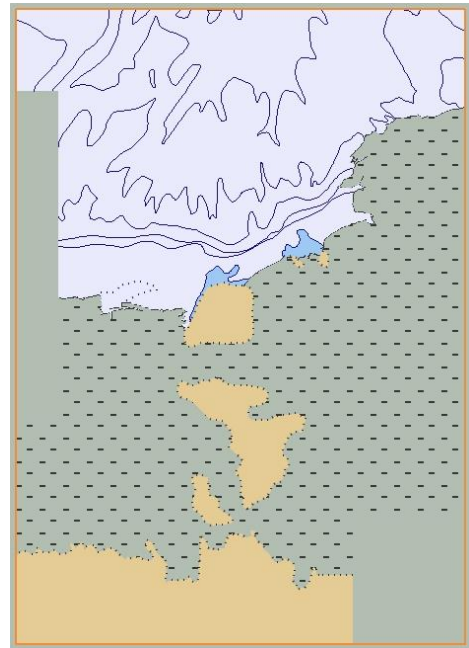


Figure 2. ZA300300

b. Publications

South Africa has since 2001 published, in its South African Sailing Directions Vol III (SAN HO-23) Chapter 10, information on the Antarctic Region. The scope of this chapter encompasses that part of NAVAREA VII south of the 60° parallel and the Antarctic Coast between 20°W and 80°E. It consists of seven sections that provide essential information on the regulations/Antarctic Treaty, aircraft operations, general scientific and environmental information, natural conditions, sea ice, navigation in ice and a section on Bouvet Island (Bouvetøya).

c. Survey and charting progress in Antarctica since HCA-14 (June 2016)

- No new INT, national, ENC charts were produced in the reporting period.
- The SA Navy did not conduct any Antarctic surveys in the reporting period.
- No risk assessment studies were conducted.

4. Status of Relations with Other Organizations

a. Scientific and polar institutes

SA's polar issues are mainly administered through Department of International Relations & Cooperation (DIRCO), Department of Environmental Affairs (DEA) and Department of Science & Technology (DST). DST manages the relations with academic institutions or research grants. To date, DEA in cooperation with DIRCO and DST is leading the development of an overarching Integrated Antarctic and Southern Ocean Strategy

b. Research and Supply vessels

A replacement supply vessel, SA AGULHAS II (Figure 3), commissioned in South Africa in July 2012, is used by the DEA Directorate: Antarctica and Islands to transport equipment and supplies to the researchers at SANAE IV and conducts research in the waters surrounding Antarctica. The servicing of the SANAE base on the Antarctic mainland and the two weather stations on Marion and Gough Islands is carried out once per year. During these voyages, meteorologists accompany the vessel to collect data and deploy ocean drifting weather buoys. While the re-supply functions consume some 180 days per year, the ship can spend up to 120 days per year on dedicated deep water oceanographic and geological research cruises to depths of 6 000 metres. These cruises take place in

the Southern Ocean, but the ship has been designed to operate in tropical waters to enhance its ability to serve a wider user community. Approximately 800m² of space has been set aside for dedicated research laboratories and up to six specialist container laboratories. The ship is a multi-purpose vessel and it can carry 100 passengers, 4000 m³ of cargo space to supply the three remote stations and two Super Puma class helicopters.



Figure 3. M/V SA AGULHAS II

c. **SA Antarctic bases**

SANAE IV was recently inspected by Norway and was found generally compliant, but need to address energy efficiency and renewable energy, and reduce hazards resulting from current upgrading work, etc.

5. **Maritime Safety Information (MSI)**

NAVAREA VII – Co-ordinator

The Co-ordinator of NAVAREA VII in association with the South African Meteorological Service currently transmits all the necessary NAVAREA VII and METAREA VII (SafetyNET) Weather Information and Shipping Safety messages via the IOR and AOR-E satellites as far south as the Antarctic. These messages are backed up by HF transmissions from Cape Town Radio. No NAVAREA VII messages were transmitted during 2017-18 for the Antarctic Region (Sea Area A4) thus far.

6. **Capacity Building / Status of Relations with Other Organizations**

South Africa will welcome any additional survey data including satellite imagery (geo-referenced) within their charting area from neighbouring countries to update chart SAN 2004 (INT 9056) and ENC ZA300300.

- a. Hydrographic data received from other organizations: Nothing to report
- b. Hydrographic data provided to other primary charting authorities and/or GEBCO: Nothing to report

7. **Particular Issues that may require HCA Consideration**

Take note of the report and the information provided. Take any appropriate action deemed necessary

----- END -----

June 2018