



Royal Netherlands Navy
Hydrographic Service

National report of the Kingdom of the Netherlands



Leendert Dorst - MACHC17, December 2016

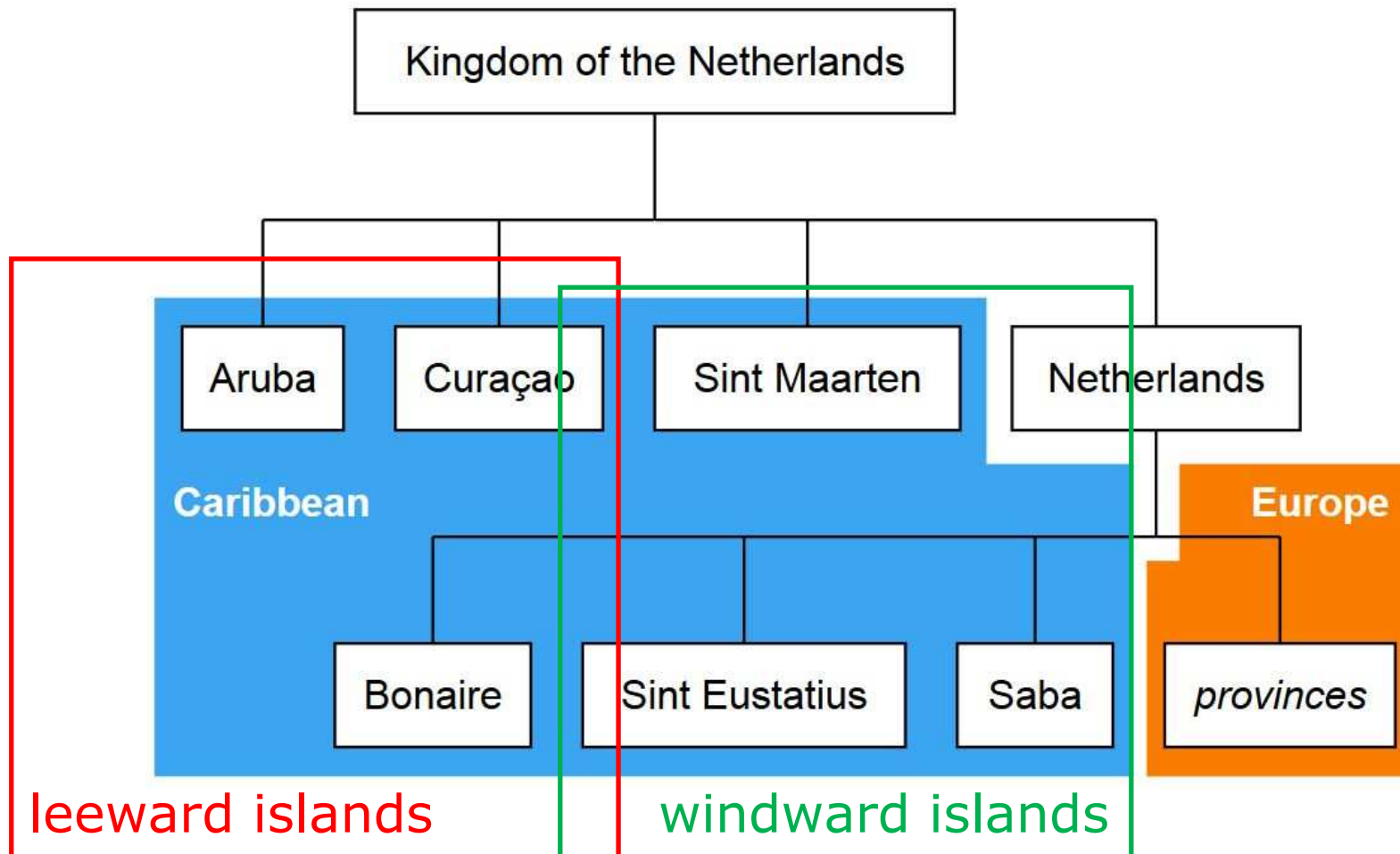


A quick recap: responsibilities of NLHO in Caribbean



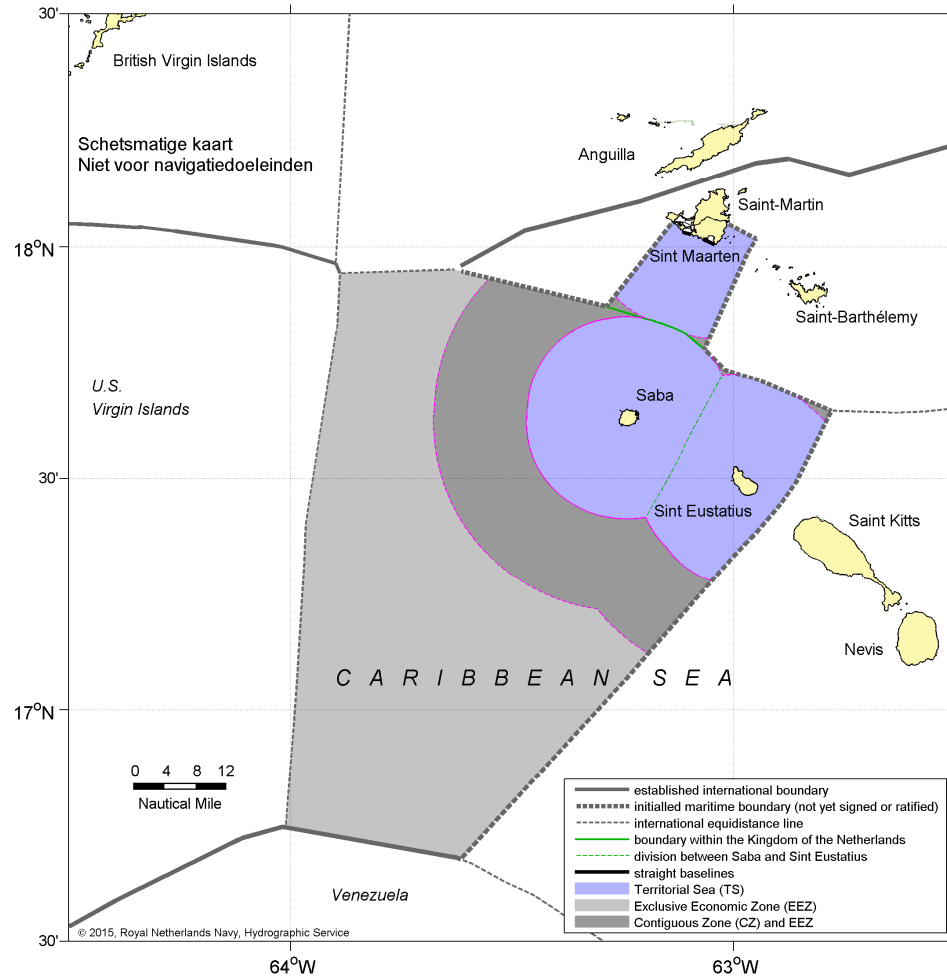


A quick recap: responsibilities of NLHO in Caribbean



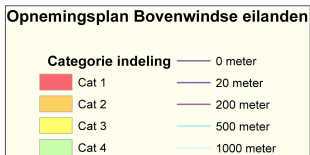
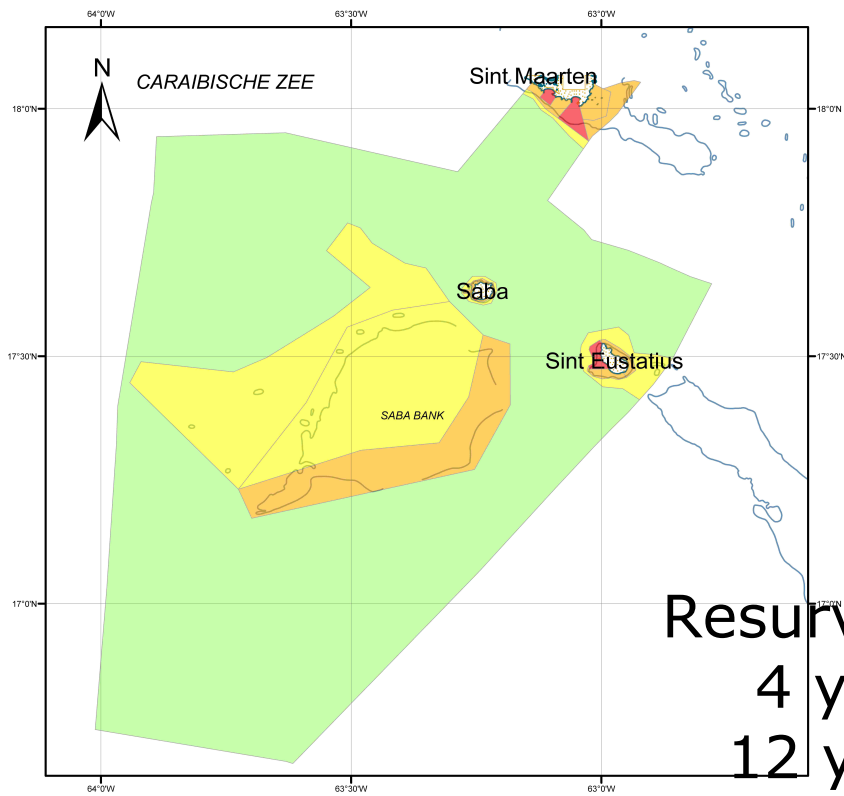


Agreement on new Caribbean all-purpose boundary

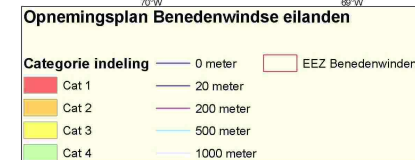
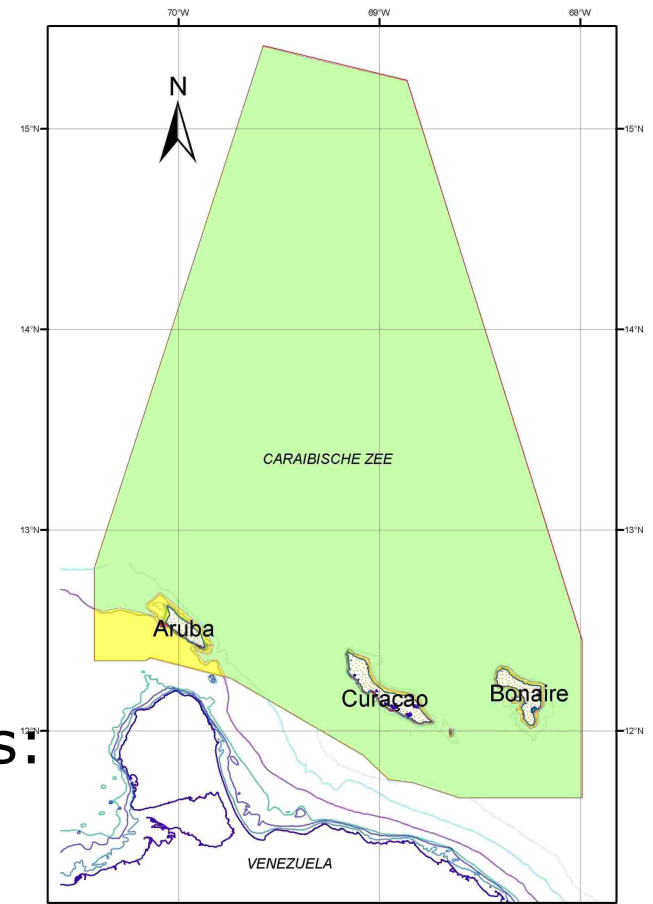




Survey policy 2015



Resurvey frequencies:
 4 years (Cat.1)
 12 years (Cat. 2)
 24 years (Cat. 3)
 50 years (Cat. 4)





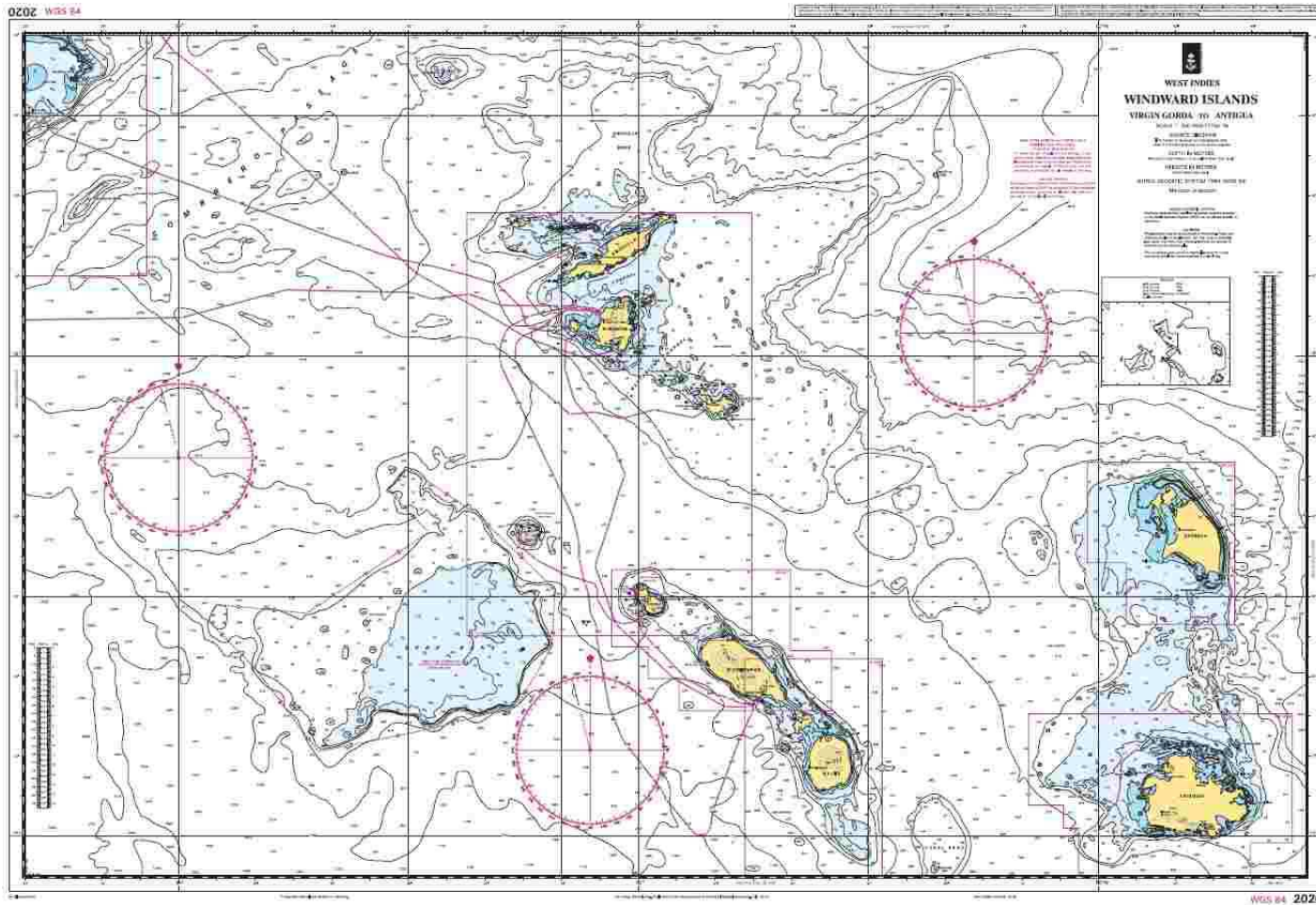
Post-Matthew deployment in Curaçao



Portable system, to be used on any ship of opportunity.
C-55 will be updated when the data is processed.
New littoral survey campaign planned for 2017,
for the other islands.



New edition chart 2020





MSDI

- NL offers an INSPIRE-compliant web service for its gridded bathymetric data of the Caribbean Sea, which will become available in the INSPIRE harmonized data format in 2017.
- GEBCO informed on 14 January 2016
- It is our intention to start up additional INSPIRE harmonized web services for the Caribbean Sea, for geographic names, administrative units (maritime zones) and area management (PSSA Sababank).

WMS: http://inspire.caris.nl/server/services/ows/view/map/Caribbean_inspire

WCS: http://inspire.caris.nl/server/services/ows/wcs/Caribbean_wcs



Conclusion

- Satisfactory status for surveying and nautical charting in the MACHC area.
- The 2016 survey campaign will improve the status of surveying of the Leeward Islands.
- Continued efforts to establish maritime boundaries