



## NATIONAL REPORTS FROM THE NETHERLANDS TO THE MACHC17

Reference: IHO Resolution 2/1997 as amended

### Executive summary

Satisfactory status for surveying and nautical charting in the MACHC area. The 2016 and 2017 survey campaigns will improve the status of surveying. Efforts to establish maritime boundaries with our neighbouring countries are continuing.

#### 1. Hydrographic Office / Service:

- a) Name of the institution: Hydrographic Service of the Royal Netherlands Navy
- b) Description: Areas of responsibility are the waters of the Kingdom of the Netherlands in the Caribbean. These are the Leeward Islands (Aruba, Curaçao, Bonaire) and the Windward Islands (Sint Maarten, Saba, Sint Eustatius).
- c) Submitted by: Leendert Dorst, LL.Dorst@mindef.nl.

Detailed information to update IHO Publication P-5 (*Yearbook*) is identical to 2015. No new information is submitted.

#### 2. Surveys:

A hydrographic survey campaign has started on Curacao to cover Cat 1 and Cat 2 areas. Continuation of survey work on Aruba, Bonaire and the Windward Islands is foreseen in 2017. The Cat 1 and Cat 2 areas are surveyed using the Mobile Hydrographic System, operated from a RHIB. The system contains a MBES, SSS, SV profiler and uses ERS techniques for horizontal and vertical positioning.

The total NL responsibility area is divided in four categories, listed in Table 1.

Cat 1	0-40 m	Harbours and approaches	every 4 years
Cat 2	0-40 m	Coastal areas on South and West coasts not covered by Cat 1	every 12 years
Cat 3	0-200 m	All areas up to 200 m not covered by Cat 1 and 2	every 24 years
Cat 4	> 200 m	All areas deeper than 200 m	every 50 years

Table 1: categories for hydrographic surveys in the Caribbean waters of the Kingdom of the Netherlands

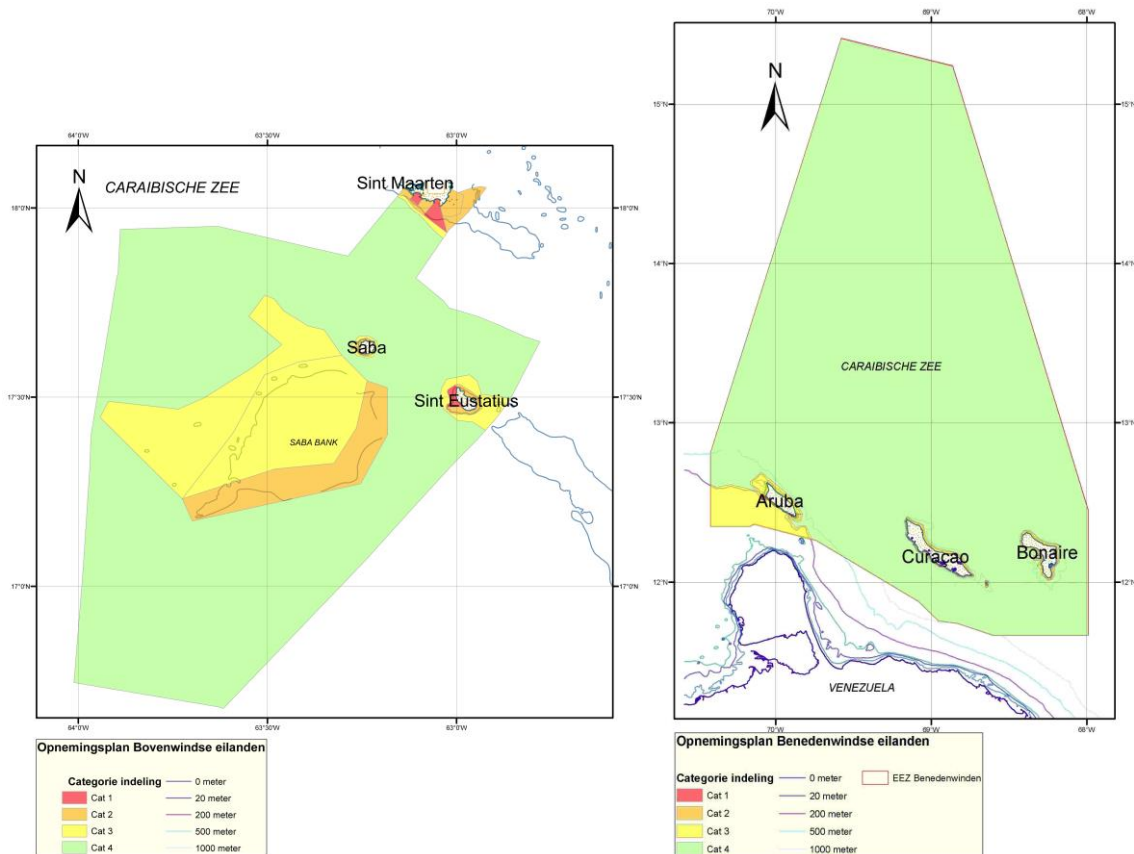


Figure 1: Survey Policy for the Windward Islands (left) and Leeward Islands (right).

Detailed information about surveys to update IHO Publications P-5 (*Yearbook*) and C-55 (*Status of Hydrographic Surveying and Charting Worldwide*) will be submitted when the 2016 campaign has been processed.

### 3. New charts & updates:

New edition: NL chart 2020 (West Indies, Windward Islands, Virgin Gorda to Antigua, 1:300.000), October 2016.

Full ENC coverage Windward Islands for all appropriate usage bands. UK and FR are producer nations for the overview and general usage bands.

Full ENC coverage Leeward Islands for the coastal, approach, harbor and berthing usage bands. Cell NL302023 maintained in consultation with Venezuela as intermediate solution, pending release of Venezuelan ENC's VE300100 and VE300200.

Detailed information about charting to update IHO Publications P-5 (*Yearbook*) and C-55 (*Status of Hydrographic Surveying and Charting Worldwide*) will be submitted in case of changes.

### 4. New publications & updates:

Not applicable; UK, FR and US promulgate nautical publications of NL waters.

### 5. MSI

Detailed information about MSI to update IHO Publication C-55 (*Status of Hydrographic Surveying and Charting Worldwide*) will be submitted in case of changes. The national

self-assessment of MSI is submitted as Annex to this report as detailed in IHO Resolution 2/1997.

6. C-55

The table with the latest information to update IHO Publication C-55 (*Status of Hydrographic Surveying and Charting Worldwide*) will be provided when the 2016 survey campaign has been processed.

7. Capacity Building Offer of and/or demand for Capacity Building

Training needed: not applicable

Training offered: practical traineeship on board NL survey vessels

In accordance with our expired Memorandum of Understanding, the Maritime Authority of Suriname (MAS) and NLHO cooperate in the production of yearly Tide Tables for Suriname.

8. Oceanographic activities

Not applicable

9. MSDI Progress

NL offers an INSPIRE-compliant webservice for its gridded bathymetric data of the Caribbean Sea, which will become available in the INSPIRE harmonized data format in 2017. It is our intention to start up additional INSPIRE harmonized web services for the Caribbean Sea, for geographic names, administrative units (maritime zones) and area management (PSSA Sababank).

10. Other activities

Disaster relief:

In reaction to hurricane Matthew, a hydrographic survey crew was deployed in Haiti as part of a humanitarian tasking of HNLMS Holland, see Figure 2. All data and results will be made available to the MACHC community, see Figure 3.



Figure 2: Hydrographic seariders of HNLMS Holland in action in Haitian waters.

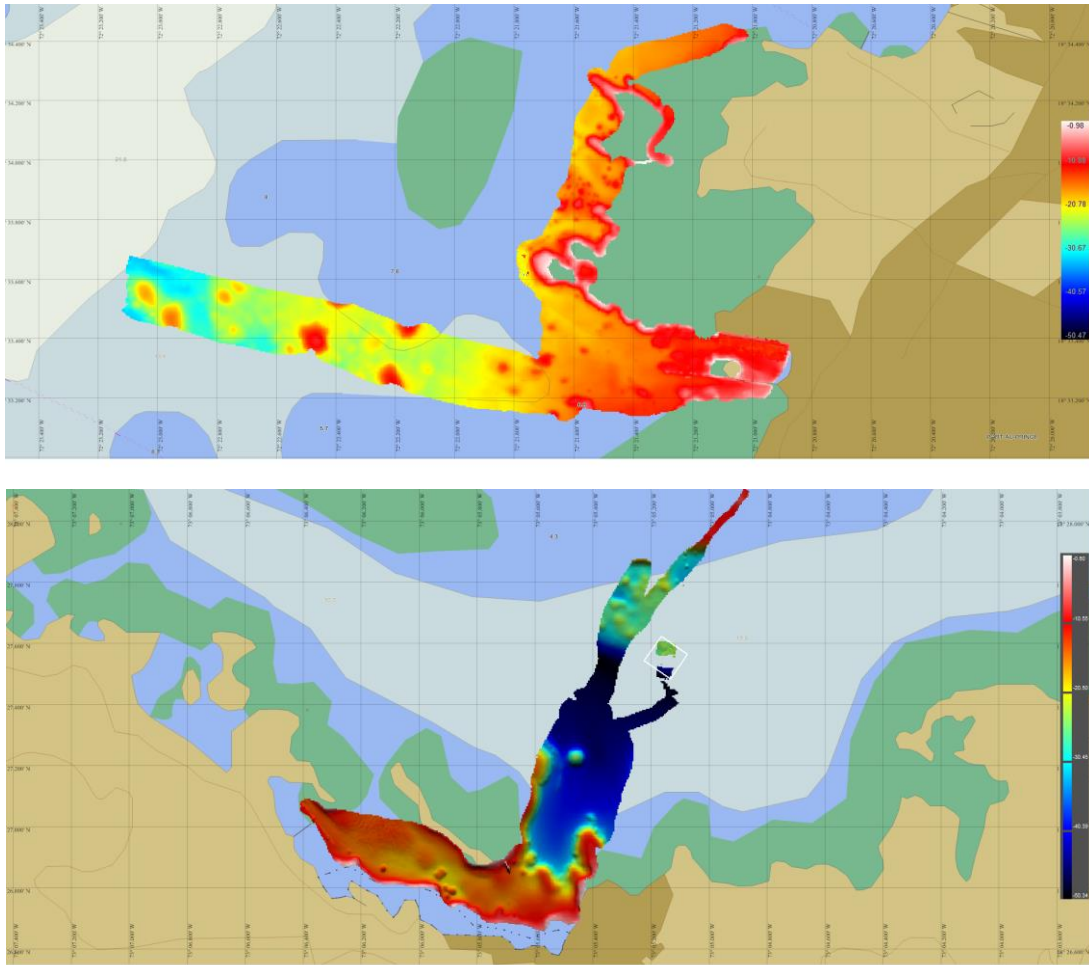


Figure 3: bathymetric results of hydrographic deployment RNLN for Port-au-Prince (top) and Miragoane (bottom)

Participation in IHO working groups:

ENCWG, DQWG, NCWG, NIPWG, MSDIWG, S-100W, TWCWG.

Participation in RENC:

NLHO is IC-ENC member; the Director of the Netherlands Hydrographic Office is currently chairman of IC-ENC.

Regional hydrographic commissions:

The Director of the Netherlands Hydrographic Office is currently chairman of Meso-American and Caribbean Sea Hydrographic Commission. The Netherlands is also a member of the North Sea Hydrographic Commission.

Maritime boundaries:

The situation is shown in Figure 4. Parliamentary Committee on Foreign Affairs approved the all-purpose equidistance-based maritime boundary between the Kingdom of the Netherlands and the French republic. The treaty has not yet been signed.

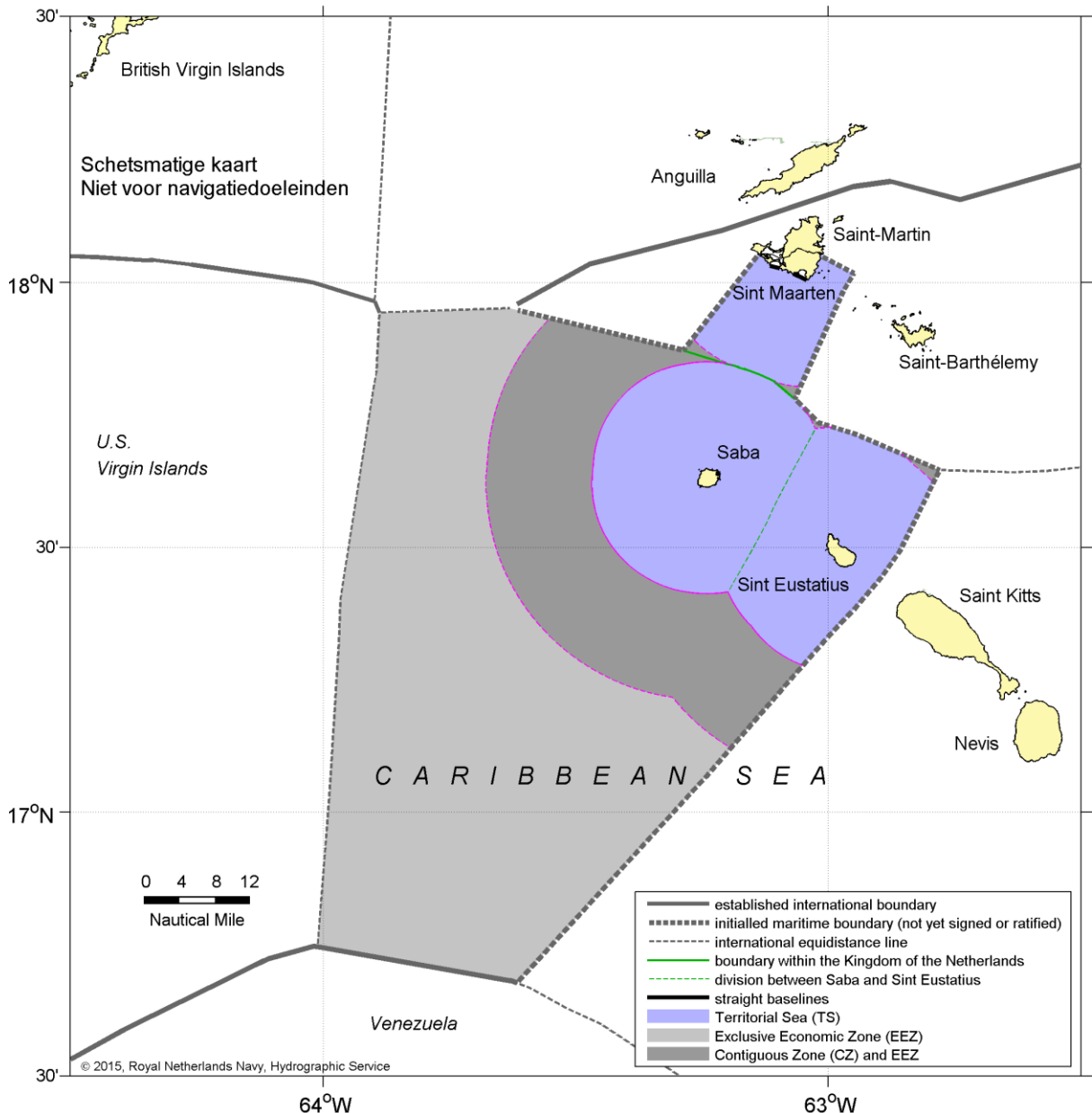


Figure 4: initialled maritime boundary with Saint Kitts & Nevis (2014) and parliamentary committee approved maritime boundary with France (2015), given by the thick dotted lines

Termination cooperation with Surinam in producing chart products:

As Suriname has built up its own capacity, and works together with UKHO in ENC and chart production, it has been agreed that the cooperation between NL and Suriname will gradually cease. The Memorandum of Understanding expired in September and was not renewed. We thank Suriname for the good cooperation ever since its moment of independence.

## 11. Summary Statement

Satisfactory status for surveying and nautical charting in the MACHC area. The 2016 and 2017 survey campaigns will improve the status of surveying. Efforts to establish maritime boundaries with our neighbouring countries are continuing.

## National MSI Self-Assessment

Curacao

Dutch Caribbean Coast Guard

JRCC

### 1. Maritime area

*The TTW and EEZ of the Dutch Caribbean islands Aruba, Curacao, Bonaire (ABC) and Saba, St Eustatius and St Maarten (SSS) as well the SRR in the middle of the Caribbean Sea.*

*GMDSS region classified as A2 area and under coverage of Inmarsat satellite for communication, distress and safety messages like EGC (enhanced Group Cell).*

### 2. Operational Points of Contact for the National Coordinator

<b>INSTITUTION</b>	<b>TELEPHONE</b>	<b>FACSIMILE</b>	<b>EMAIL</b>
JRCC	0059994637700	0059994637950	<a href="mailto:rcc.curacao@mindef.nl">rcc.curacao@mindef.nl</a>

### 3. GMDSS Master Plan

*All required GMDSS up to date and daily checked.*

*INMARSAT-C (AOR-W + E, NAVTEX, VHF/UHF/HF radio telephony (including Emergency and shipping international channels), DSC VHF/MF, Satellite communication/iridium, telephone alarm number 913, COSPAS/SARSAT local user terminal via US MCC to JRCC Curacao, all equipment 24/7 monitored. Additionally SAROPS search and rescue panning and prediction program.*

<b>Equipment Type for Ports and Local Area</b>	<b>Software Version</b>	<b>Date of Update</b>
<i>VHF ABC and SSS islands port/ATC authorities</i>		<i>2015</i>

Average depending cases:

<b>Year Y-2</b>		<b>Year Y-1</b>		<b>Year Y</b>	
Total	Average elapsed time	Total	Average elapsed time	Total	Average elapsed time
<i>01</i>	<i>30 Mins</i>	<i>01</i>	<i>30 Mins</i>	<i>x</i>	<i>xx.x Mins</i>

4. NAVTEX Coverage:

*AREA H (IV) – VHF/UHF/MF – Navigational, Meteo and all desired urgency broadcasts. MMSI 430600099*

5. Operational Issues:

-

6. Contingency Planning

*New VHF/UHF radiotelephony network installed on Leeward Caribbean islands.*

*New VHF/UHF radiotelephony network planned on Windward Caribbean islands.*

7. Capacity Building

-

8. Other Activities

-

9. National Maritime Website

-

10. Recommendations

-

11. Summary

*JRCC Curacao*

*INMARSAT C MMSI 430600099*

*DSC VHF/MF MMSI 003061000*

*Telnr 0059994637700*

[rcc.curacao@mindef.nl](mailto:rcc.curacao@mindef.nl)

*24/7 monitor all GMDSS including all shipping&aircraft related COSPAS/SARSAT*