



National Report Suriname 2016

MESO AMERICAN AND CARIBBEAN SEA HYDROGRAPHIC COMMISSION

17th Meeting – Belem, Brazil

14 – 17 December 2016

MARITIME AUTHORITY SURINAME

November 30, 2016

National Report Suriname 2016

MESO AMERICAN AND CARIBBEAN SEA HYDROGRAPHIC COMMISSION
17th Meeting – Belem, Brazil
14 – 17 December 2016

1. Hydrographic Office / Service: Maritime Authority Suriname

2. Surveys:

Coverage of new surveys: in 2016 hydrographic surveys were conducted in the Suriname River, Corantijn/Nickerie River and the western part along the Coast of Suriname. Re-surveys of these areas are required due to frequent change because of sediment deposit from migrating mud banks along the coast at the entrance of the main rivers. Surveys were conducted for monitoring the navigation channels of the rivers and the migration of mud banks along the coastline.

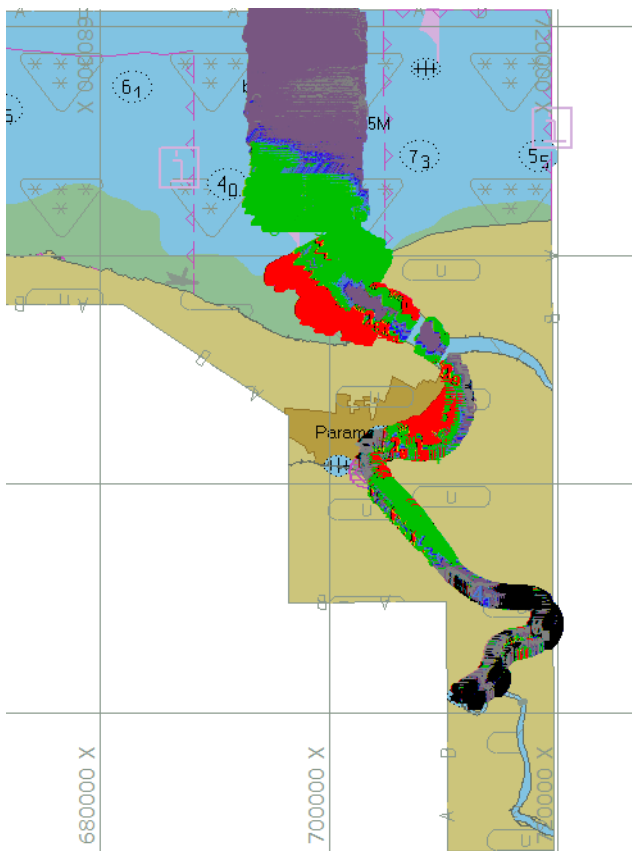


Figure 1: Survey of the Suriname River, entrance to Paranam

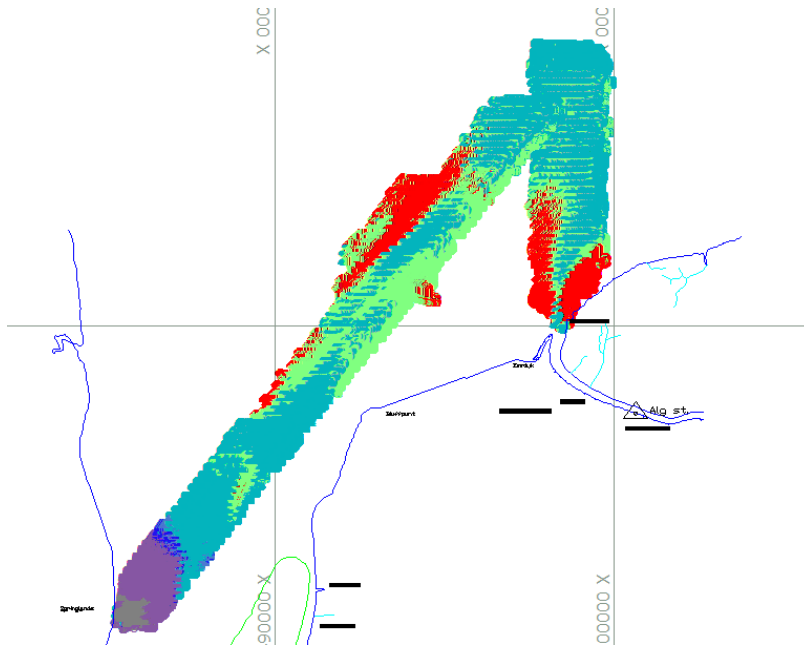


Figure 2: survey of the navigation channel of Corantijn and Nickerie River

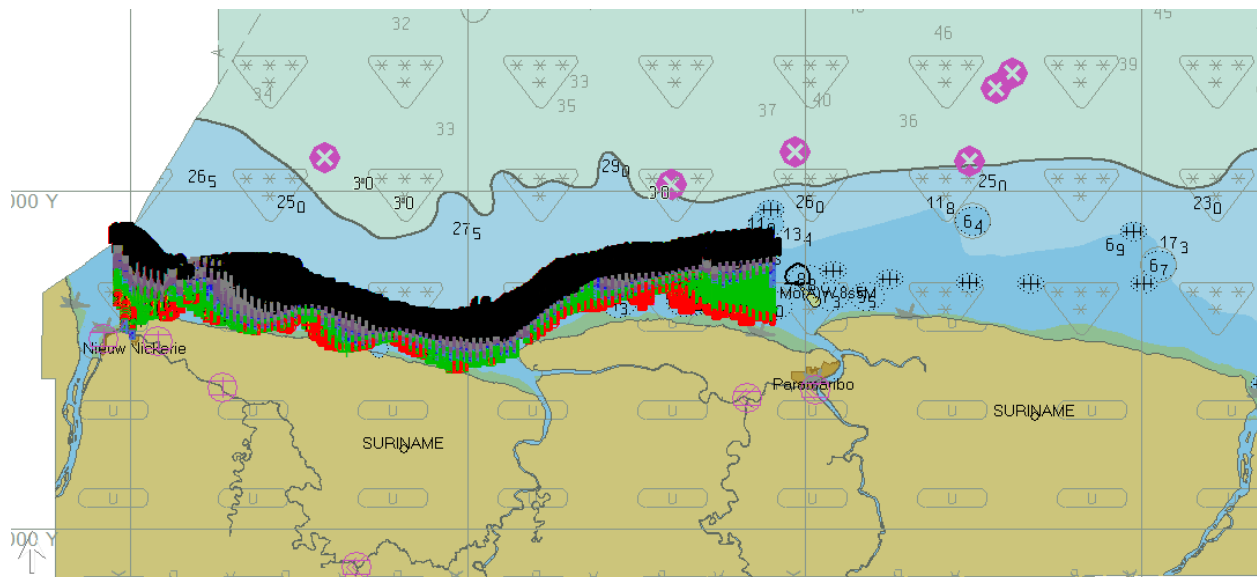


Figure 3: survey of the western part along the coast till 12 m depth

New technologies and / or equipment: RTK system has been replaced with a new DGNS system, which has the ability to obtain corrections from Omnistar and is used for surveys in remote areas.

Problems encountered: there was a delay in our survey program due to extensive bad weather.

3. New charts & updates:

ENC:

ENC and Chart	Year	Status	Producer
Paper Chart SR2218/GB2765	2016	SR own version	UKHO/MAS
Paper Chart 2228 and ENC	2016	New Edition; ongoing	UKHO
Kaart 2219	2016	Update	MAS

ENC Distribution method: IC-ENC and UKHO

4. New publications & updates:

New publications:

- Tide Table 2017 for Suriname. Tide tables are released for each year
- The release of Shipping Notices for the nautical accessibility of ISPS certified ports and rivers .Notices are updated after detail surveys of the ports.

Means of delivery: the Shipping Notice of the ISPS Ports are published through the website of the Maritime Authority Suriname and are also sent to all shipping agents per email.

5. MSI

Existing infrastructure for transmission

Partial radio warnings for coastal area through VTC .

NtM published in local papers and website, emailed to mariners.

NtM submitted to the NAV Area coordinator

Currently

Drafting of a plan for infrastructure in accordance with GMDSS Master Plan

Fase 1: VHF coverage Area A1 :currently VHF channel 16 communication for 20NM in approaches to ports

SERVICE	Yes	No	Partial
Local Warnings	X (NtM)		
Coastal Warnings			X
Port Information	X		
NAVAREA Warning	X		
Master Plan			X
Area A1			X
Area A2		X	
Area A3		X	
NAVTEX	X		
SafetyNET		X	

6. C-55

Status of hydrographic survey of all navigable waters, including internal waters, out to the limits of the EEZ: (Please refer to the guidance given in the introductory text “Analysis of the Status of Surveys”.)

Survey coverage, where:

A = percentage which is adequately surveyed.

B = percentage which requires re-survey at larger scale or to modern standards.

C = percentage which has never been systematically surveyed.

	A	B	C
Depths < 200m	90	52	10
Depths > 200m	90		10

Amplifying information:

Special national circumstances which influence the statistical break-down above (e.g. geographical factors such as narrow continental shelf or fringing reefs, or constraints such as areas of unstable seabed which require a routine resurvey programme):

The constant flow of sediments from the Amazone rivier create migrating mud banks along the coast which move in westward direction. These banks have great impact on the river systems, therefore have impact on the approaches to the ports .

7. Capacity Building

Training offered:

IALA manager level 1 training course – March 2017

Demand for Capacity Building:

- Hydrography cat. B
- Nautical Cartography cat B

Required Internship:

- Tidal analysis
- Side Scan Sonar image interpretation
- Paper chart and ENC production

Training received:

- IHO: MSI course Saint Lucia: 16- tot 18 aug
- FOCAHIMECA project Mexico: Bathymetric Data Processing, MSDI, MSI
- IALA Risk Assessment, Panama

8. Oceanographic activities

Seismic surveys indicated in the figure 4- coast of Suriname

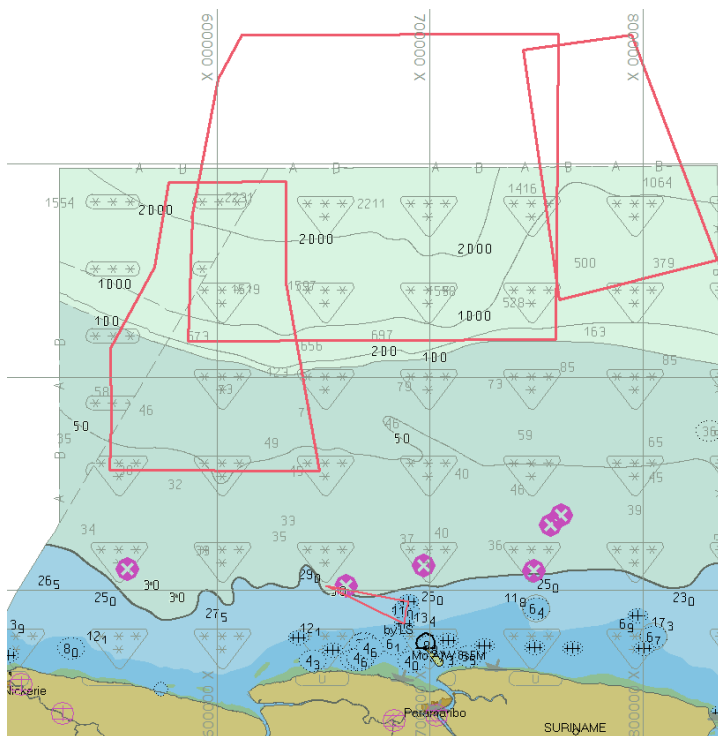


Figure 4: Seismic survey area – Coast of Suriname

9. Other activities

- Participation in IHO Working Groups; MEIP , IRCC ,
- **National Working groups:**
 - National Climate Outlook Forum (NCOF)
 - MAS participated in the National Post-deforestation 2000 – 2009 and 2000 – 2015 Land Use Land Cover Maps project organized by the Forest Cover Monitoring Unit of the Foundation for Forest Management and Production Control (SBB) as an initiative of the Amazon Cooperation Treaty Organization (ACTO).
 - **Global Climate Change Alliance (GCCA)+ Suriname Climate Change Adaptation project office and activities Government of Suriname, the European Union and the UNDP**

Increase of existing information and knowledge related to the effects of climate variability and change, including the development of targeted data collection, analysis and dissemination in related sectors of water management, hydro and meteorological services.

Strengthening of human capacity and systems for management and conservation of Mangroves. Reducing the negative effects of human action on mangroves; supporting enabling conditions to stimulate mangrove regeneration; and adaptation in the agriculture subsector.