



MESO AMERICAN - CARIBBEAN SEA HYDROGRAPHIC COMMISSION (MACHC)

18th Meeting

27 November - 2 December 2017

(Varadero, Cuba)



National Report by
COLOMBIA



Capacity Building activities since last meeting

Undersea features



Aids to Navigation Level 1



On Colombia

2018. MSDI

2019. Validation ENC IC-ENC

2020. AtoN level 1



Capacity Building activities since last meeting

On Colombia



simulation by oil spills

Submarine archaeologist



Cooperation with other RHCs

On other CHR

- 2017 Bathymetry base in Peru
- Satellite images in Argentina
- Surveys RTK in Brazil
- Data management in Uruguay



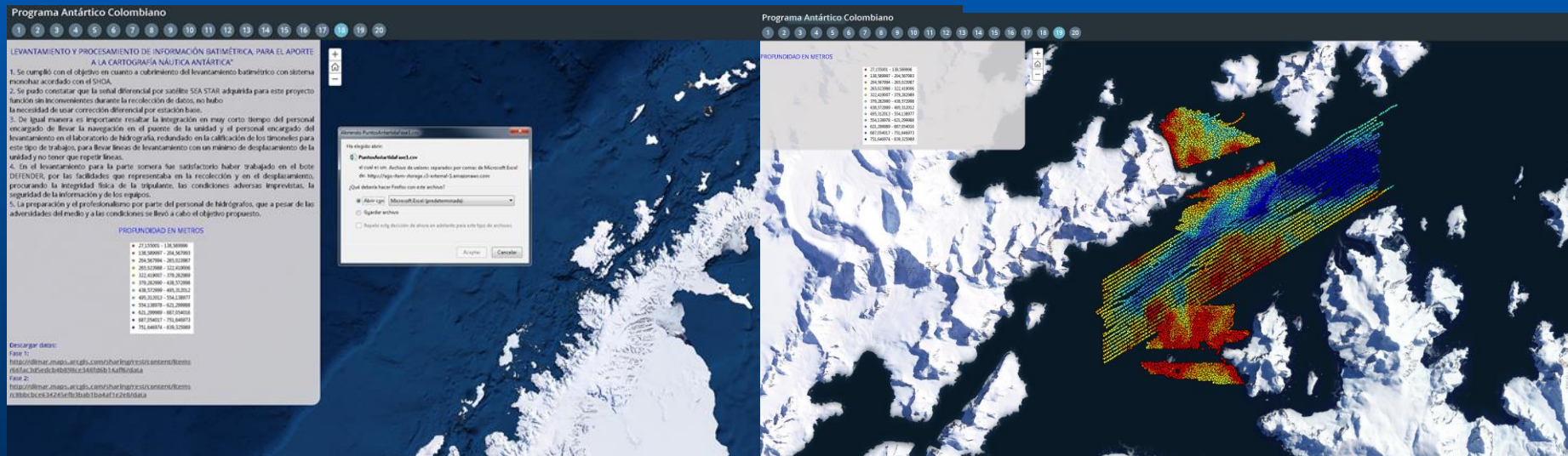
Cooperation with other RHCs

+ Cooperation CHR

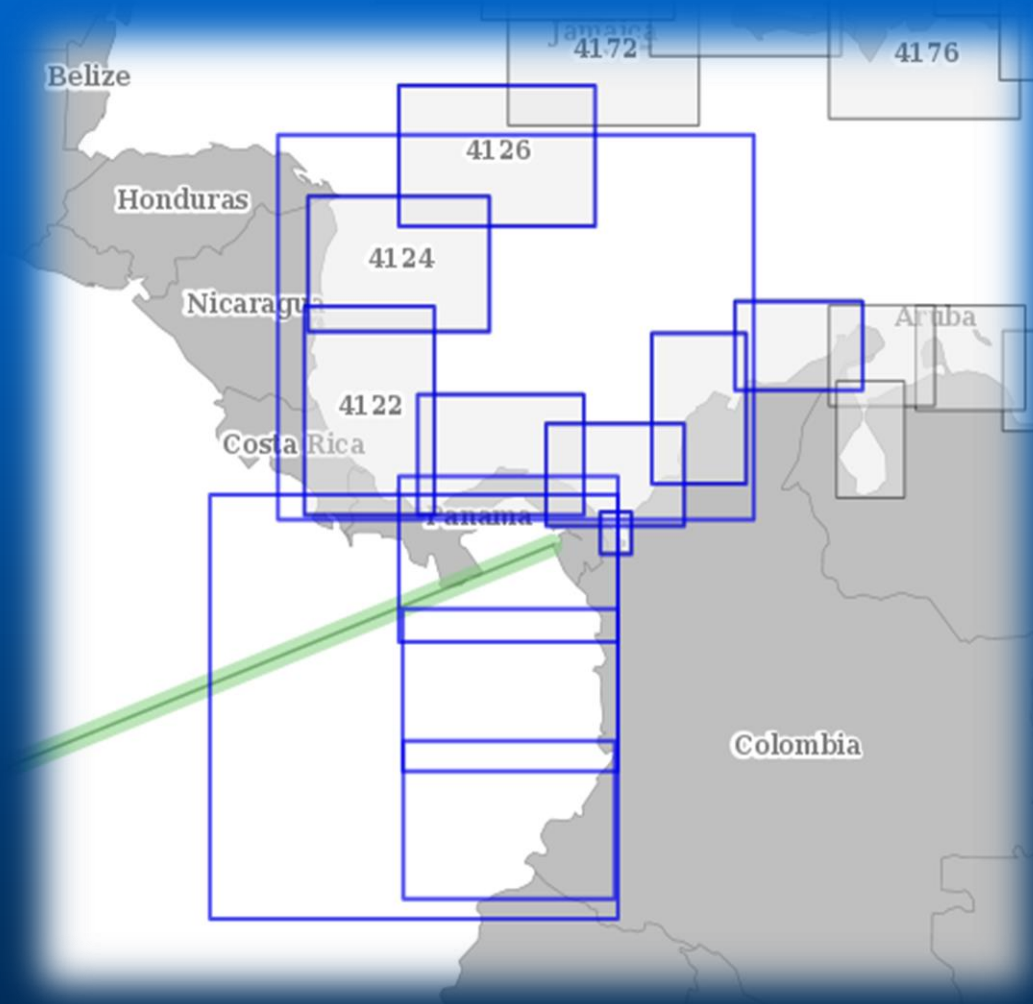
SEPHC. Chairman

CHA. Third expedition 2017-2018

<http://dimar.maps.arcgis.com/apps/MapSeries/index.html?appid=4587ab3618ec425497db95d045f10e77>

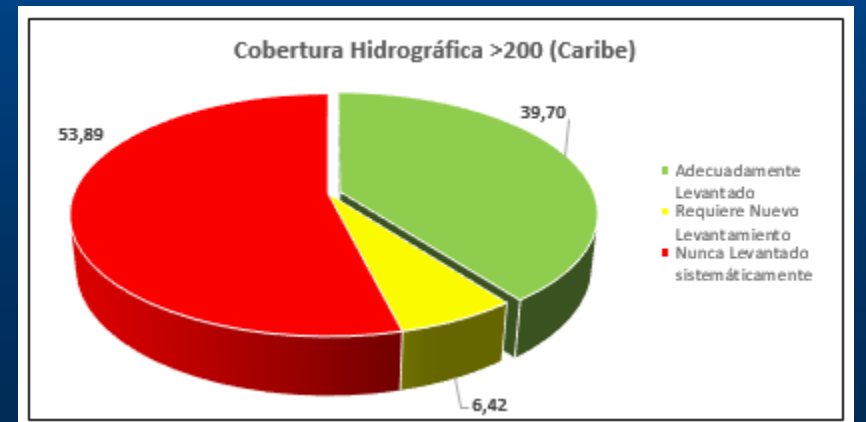
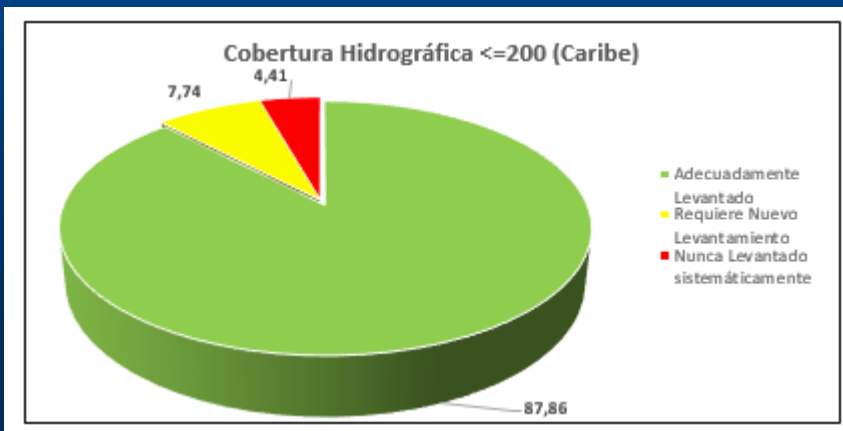
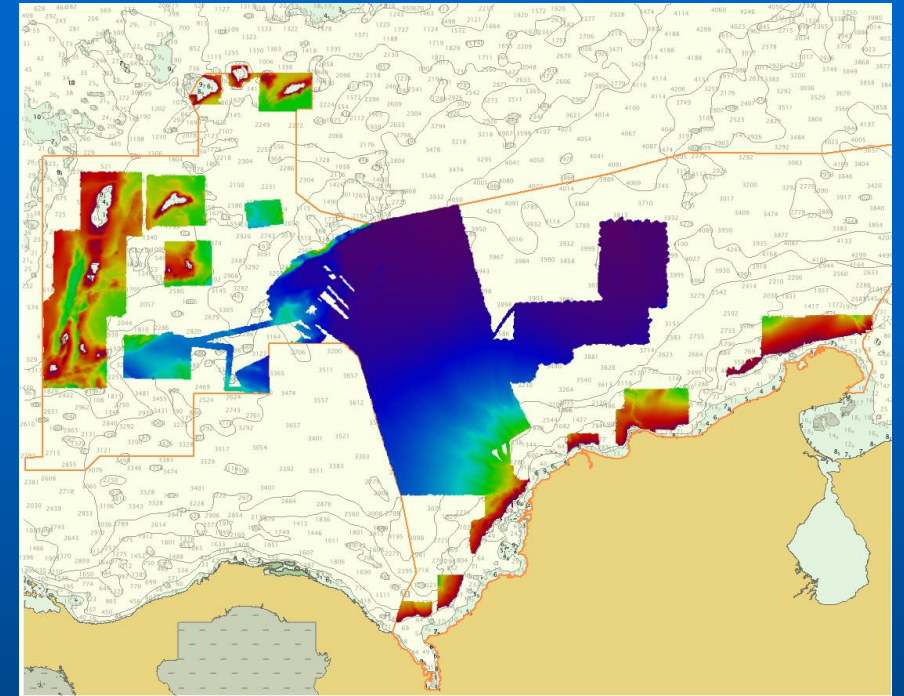
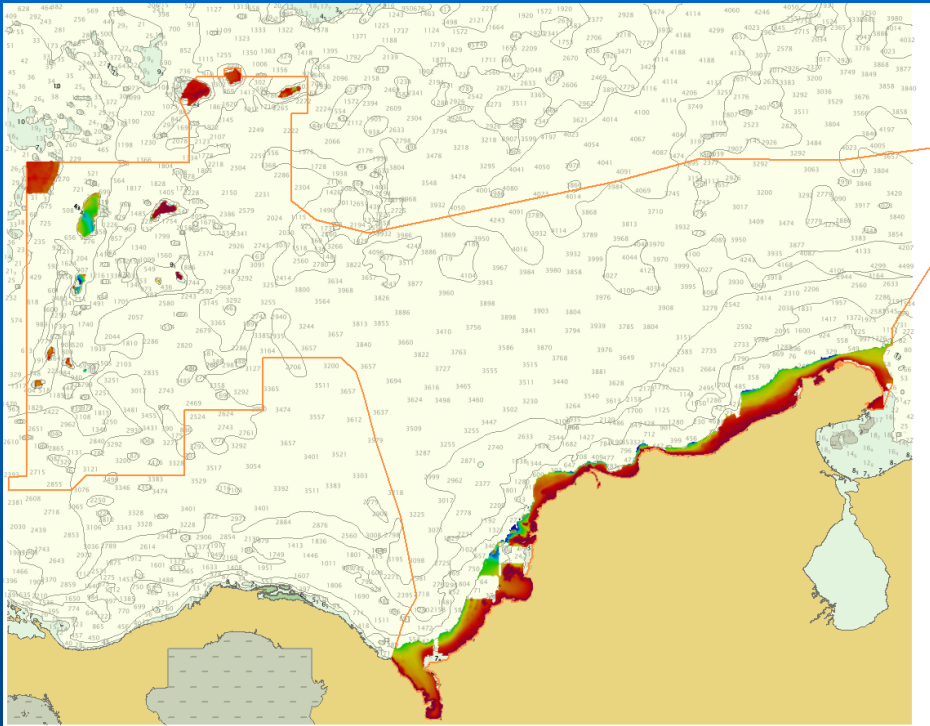


Status at the IHO INToGIS

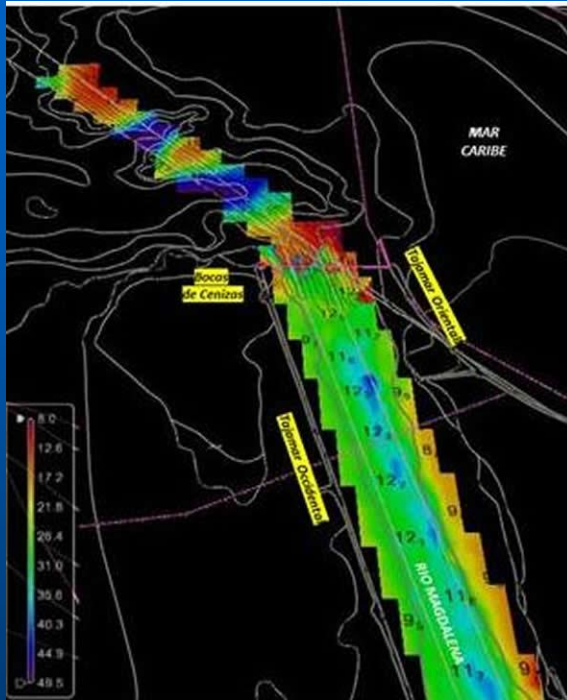


✦ Cartas INT. Publicadas y actualizadas 13: 9 Caribe, 4 Pacífico

C-55 September 2017

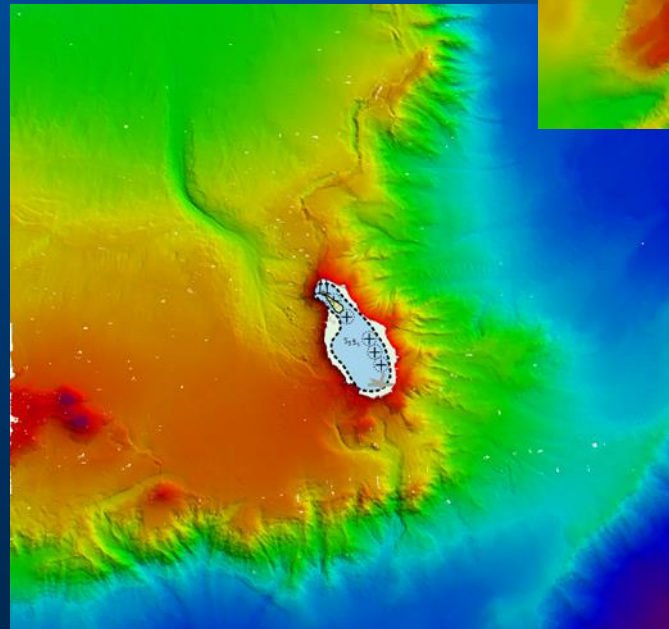
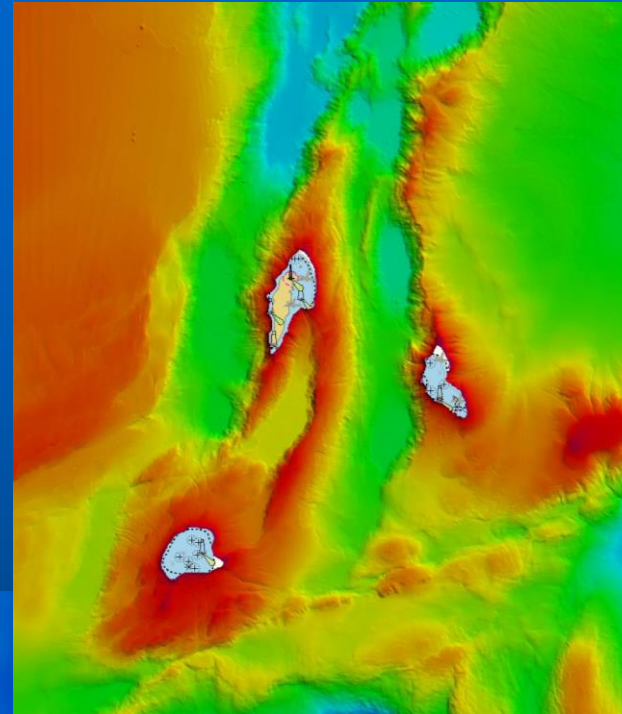


Survey and charting progress since last meeting



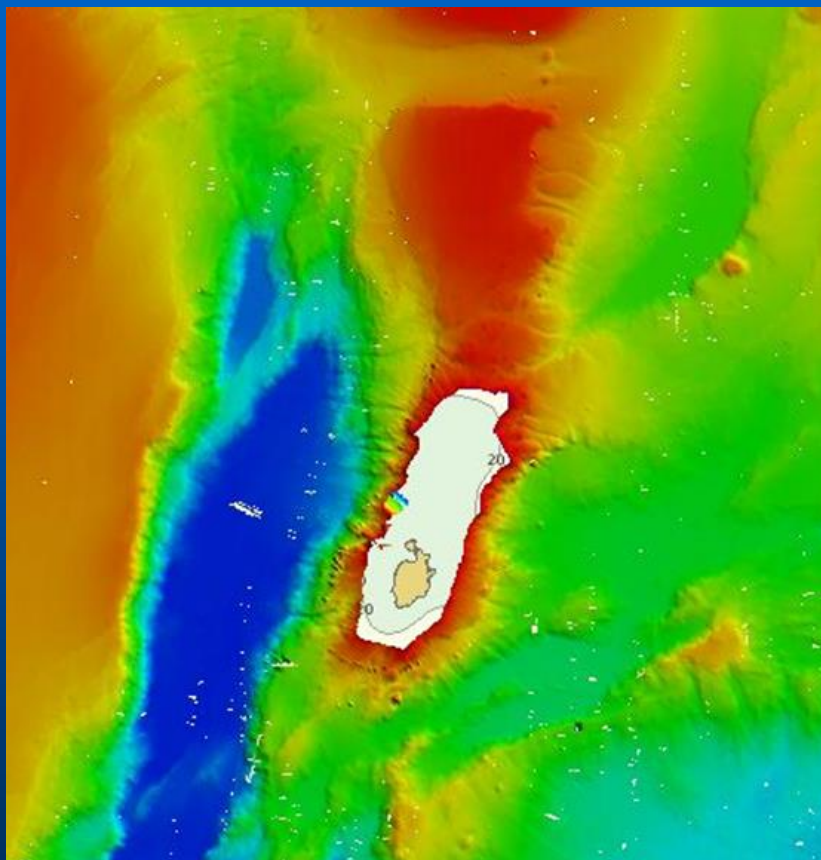
253. Río Magdalena.

201. San Andrés.

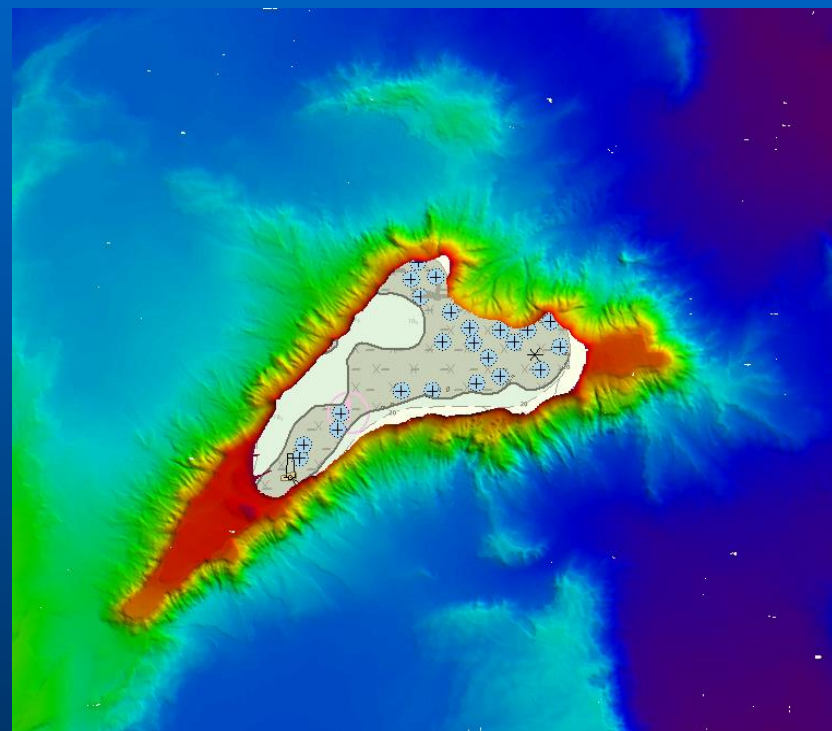


211. Isla Cayo Roncador.

Survey and charting progress since last meeting

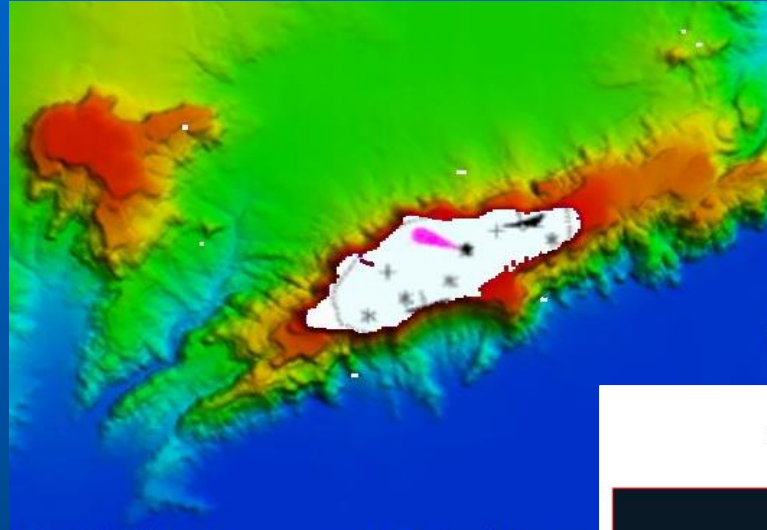


415. Islas de Providencia y Santa Catalina.



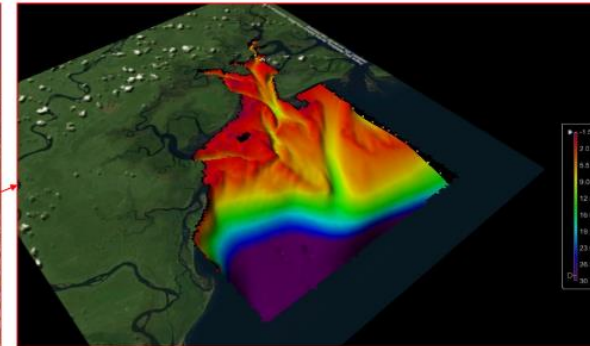
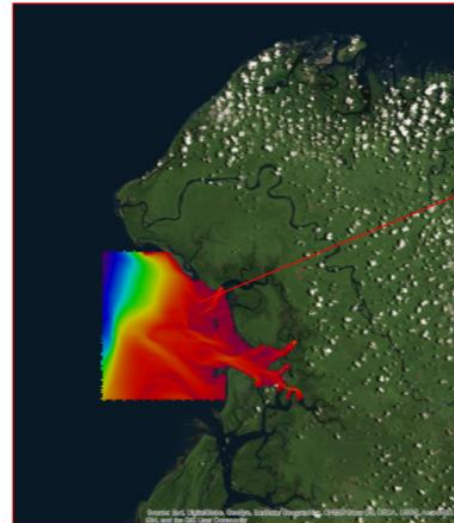
213. Cayo Serrana.

Survey and charting progress since last meeting



418 Aproximación Isla Cayos de Bajo Nuevo.

20 DE MARZO AL 25 DE ABRIL
LEVANTAMIENTO HIDROGRÁFICO BINACIONAL CARTA 146 – DESEMBOCADURA RIO MATAJE

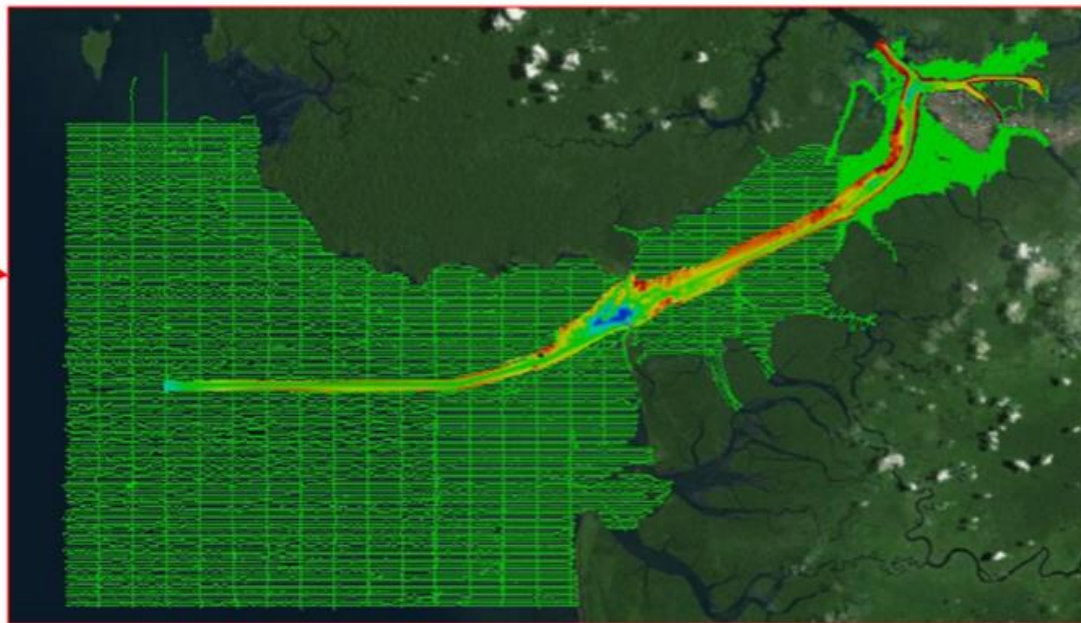
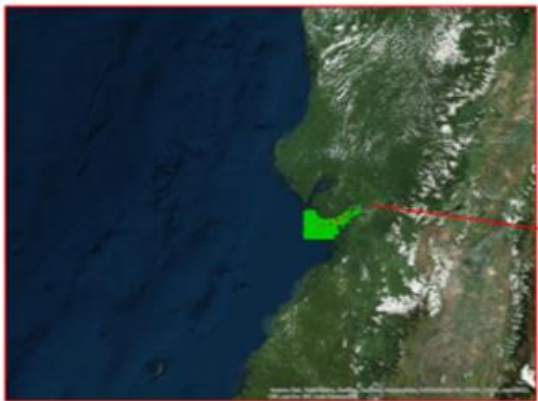


- Resultados: Cumplido 100% de objetivos planeados
- 1517 Millas Náuticas levantadas de las cuales 25% fueron en aguas Ecuatorianas.
 - 06 Hojas finales

146. Río Mataje .

Survey and charting progress since last meeting

03 DE MAYO AL 09 DE JULIO
LEVANTAMIENTO HIDROGRÁFICO CARTA 154 – 155 – POSTDRAGADO BUENAVENTURA



Resultados: Cumplido 100% de objetivos planeados

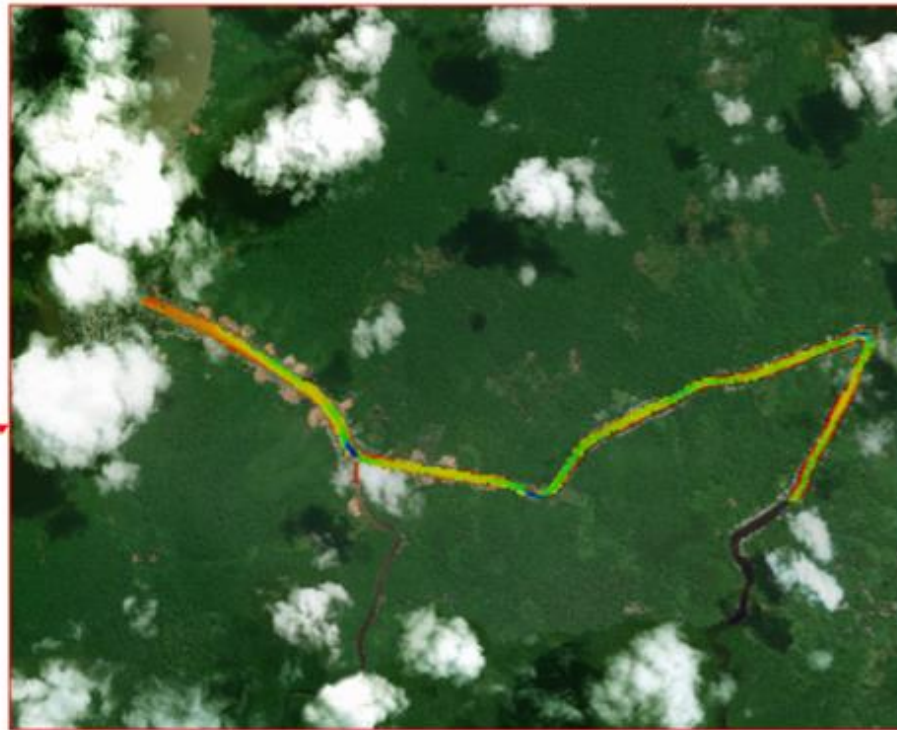
- 2350 Millas Náuticas levantadas
- 16 Hojas finales

Survey and charting progress since last meeting

01 AL 04 DE AGOSTO
LEVANTAMIENTO HIDROGRÁFICO EN
JURISDICCIÓN MUNICIPIO OLAYA HERRERA



Área Levantada en Apoyo al Municipio Olaya Herrera



Resultados:

- Total: 7.6 km lineales del río fueron levantados
- Análisis comportamiento mareográfico
- 01 Plano final en elaboración

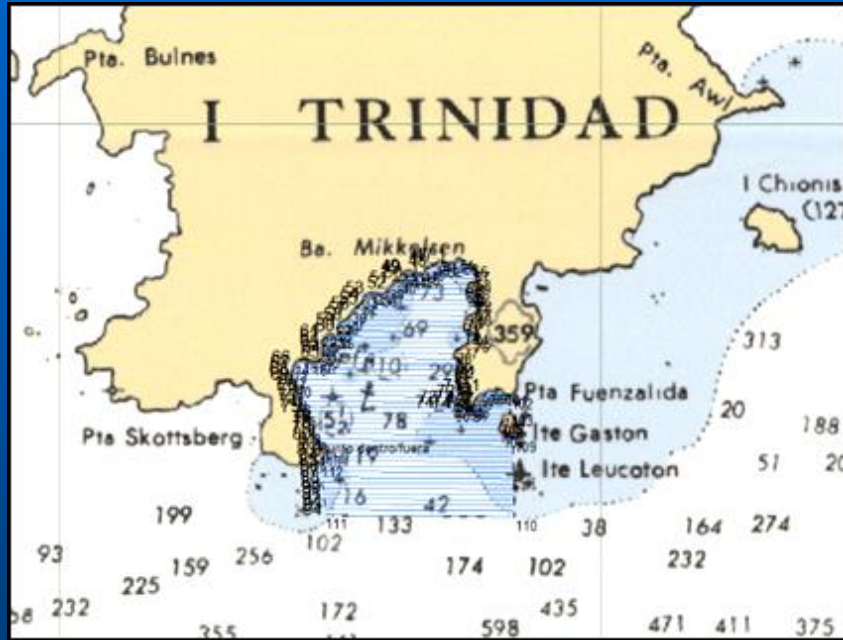
Apoyo Municipio Olaya Herrera

Survey and charting progress since last meeting

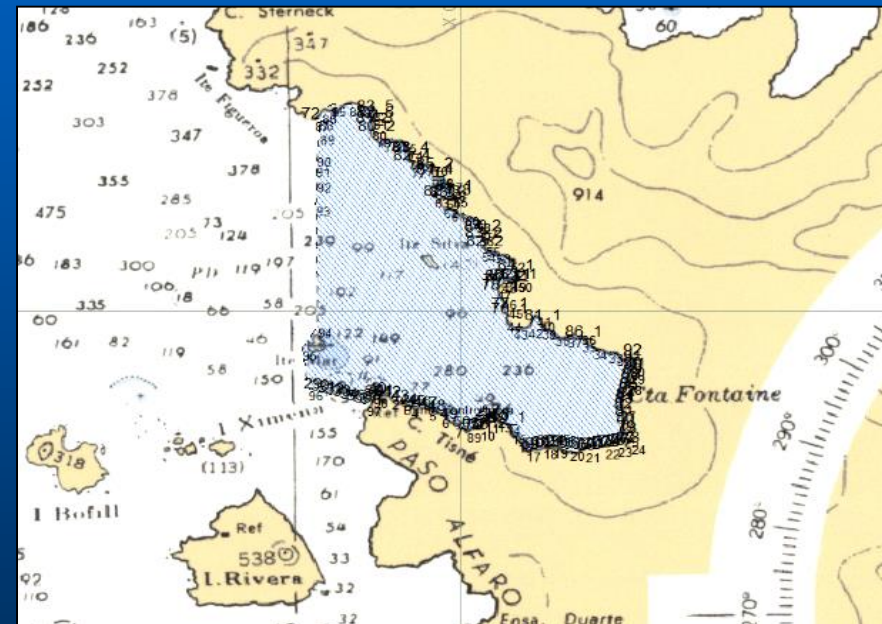


Apoyo Municipio Olaya Herrera

Survey and charting progress since last meeting



La Antártida. Puerto Mikelsen



La Antártida. Bahía de Cierva Cove

Risk assessment studies



Sistema de detección y monitoreo de Tsunami

Estudio de evaluación de riesgos

Risk assessment studies

Monitoring Tsunami



Centro principal Sede Central

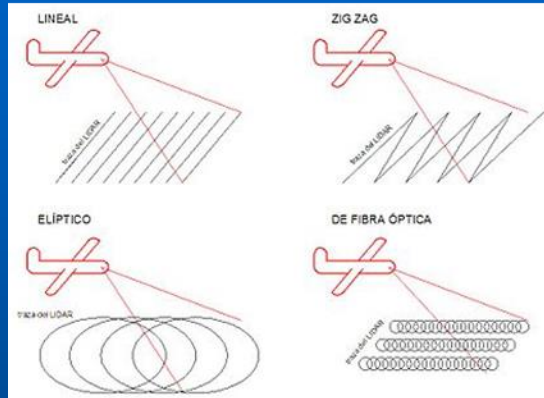


Centro respaldo CIOH Pacifico

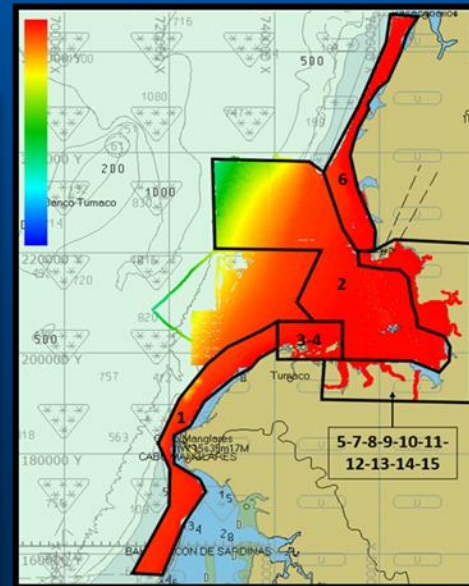
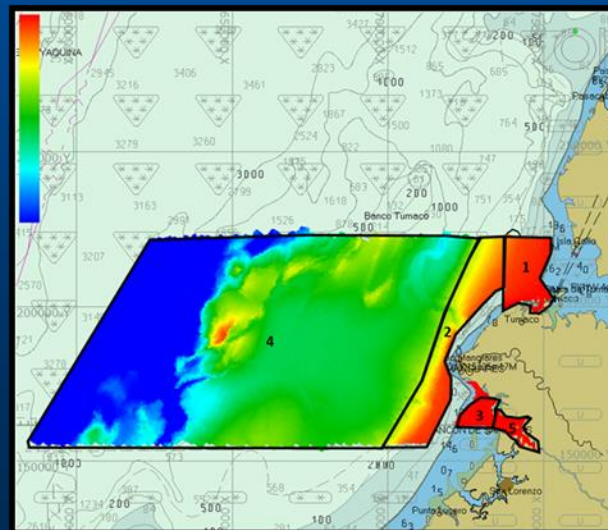


Centro respaldo CIOH Caribe

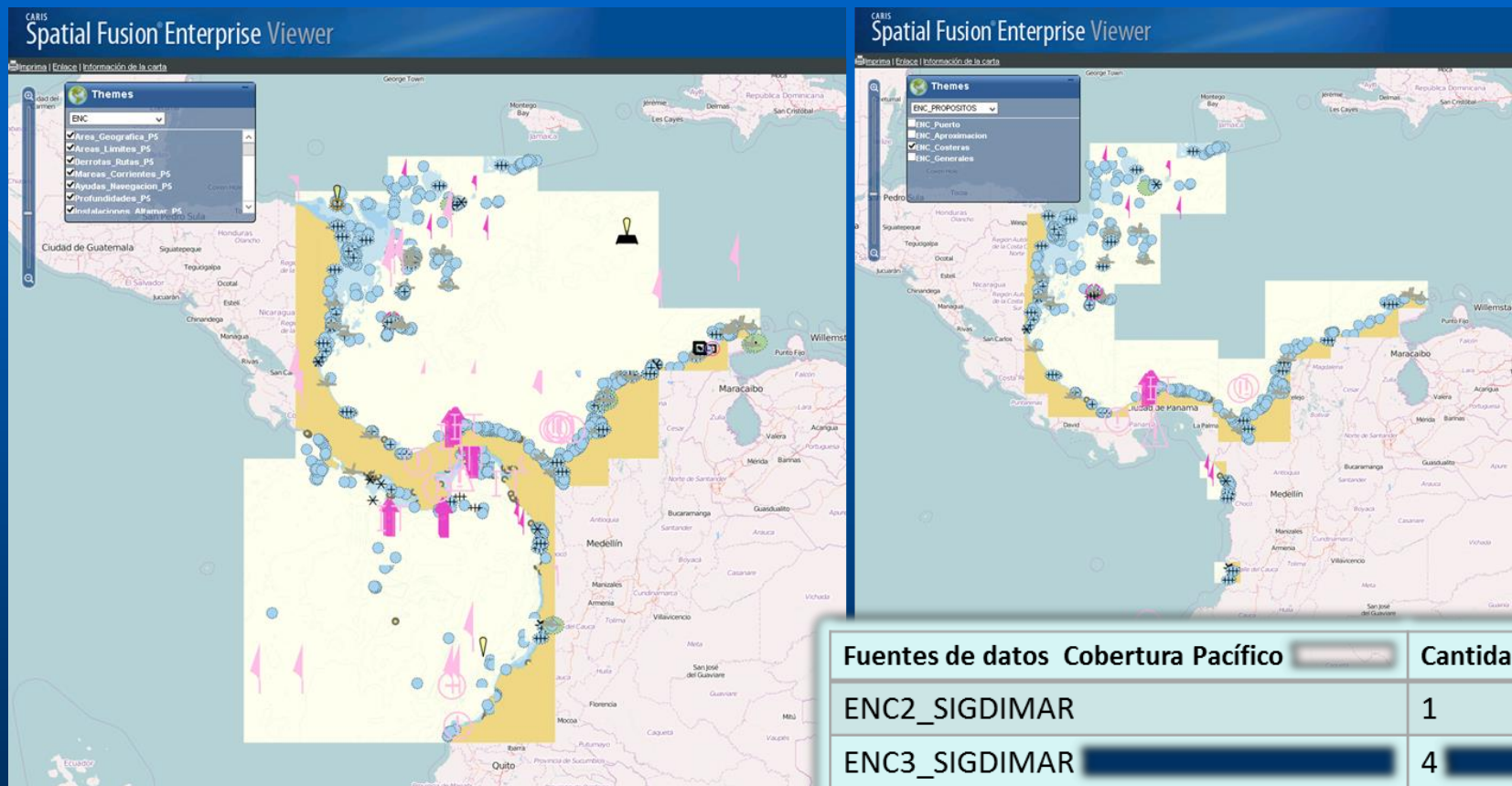
Risk assessment studies



Datos LiDAR



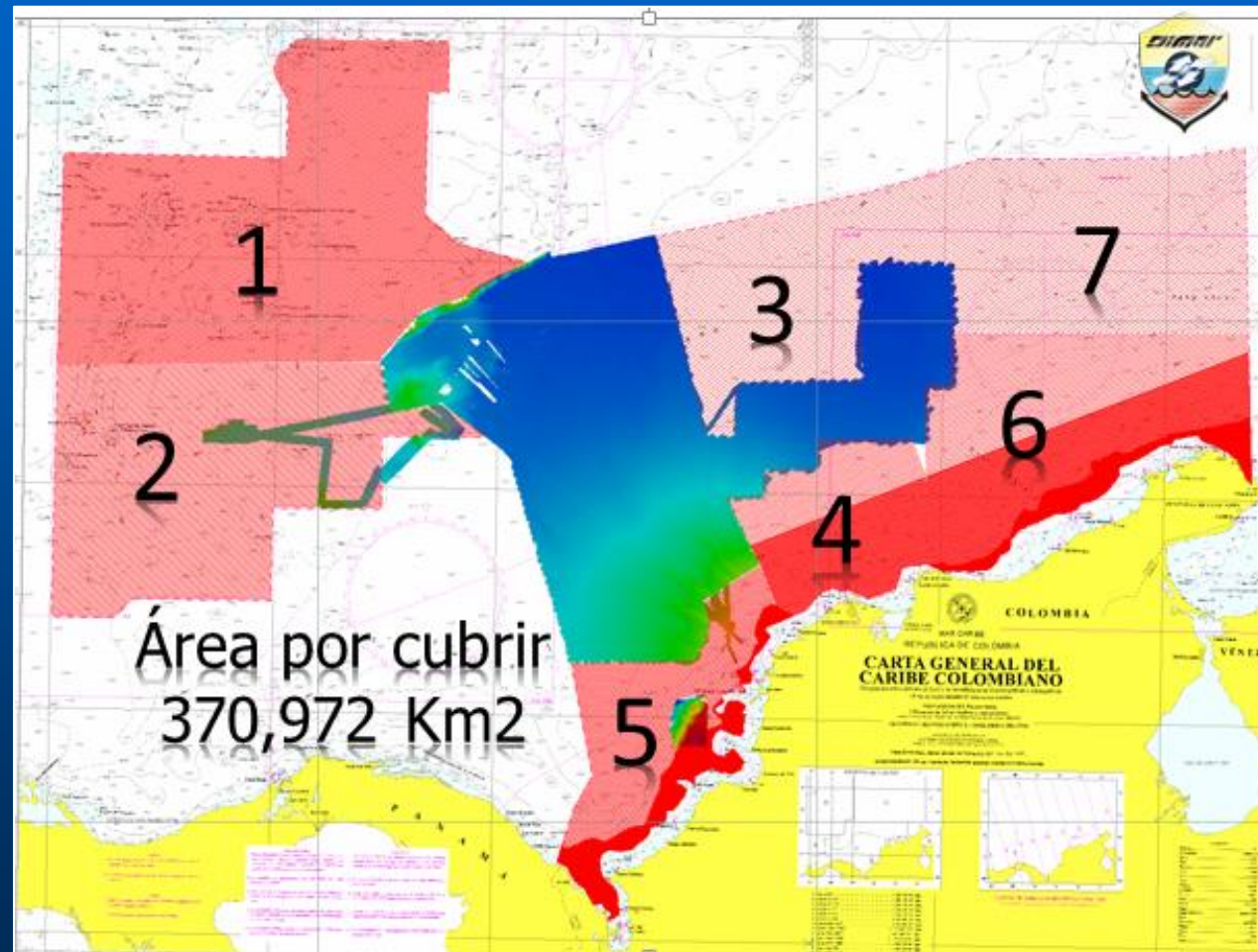
MSDI status and developments



Fuentes de datos	Cobertura Pacífico	Cantidad
ENC2_SIGDIMAR		1
ENC3_SIGDIMAR		4
ENC4_SIGDIMAR		8
ENC5_SIGDIMAR		3
Total		16

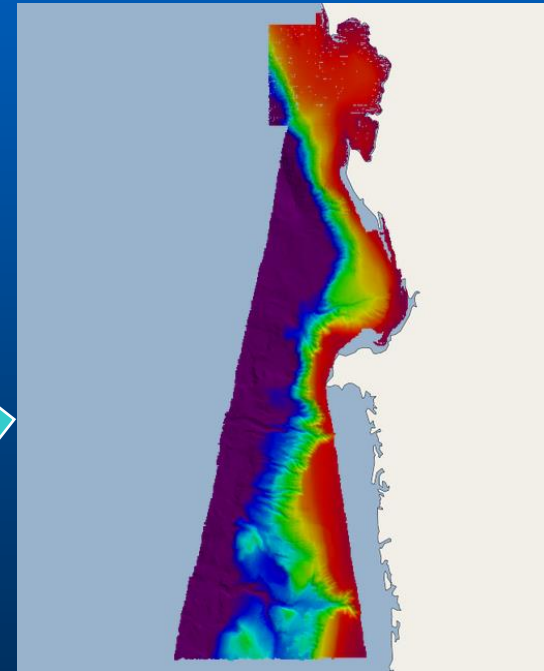
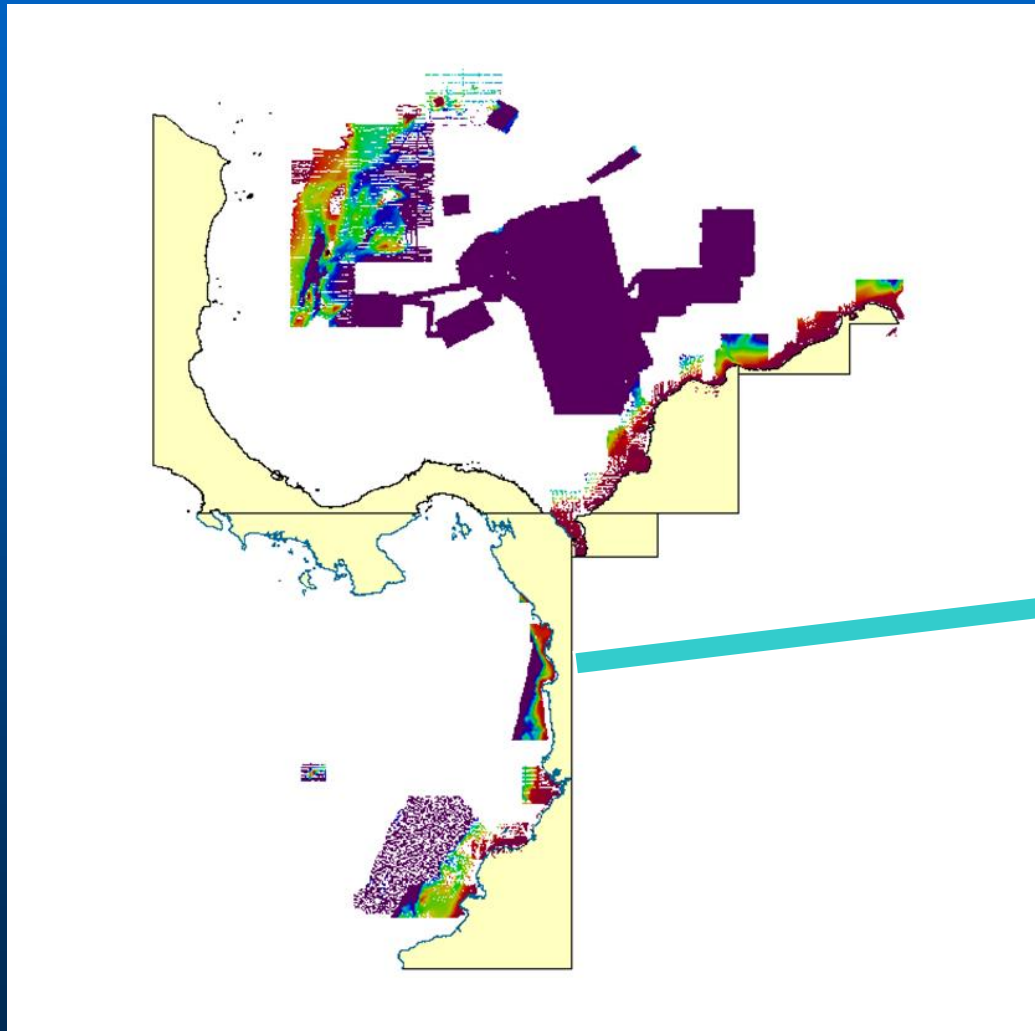
16 ENCs Available by WMS

Areas surveyed

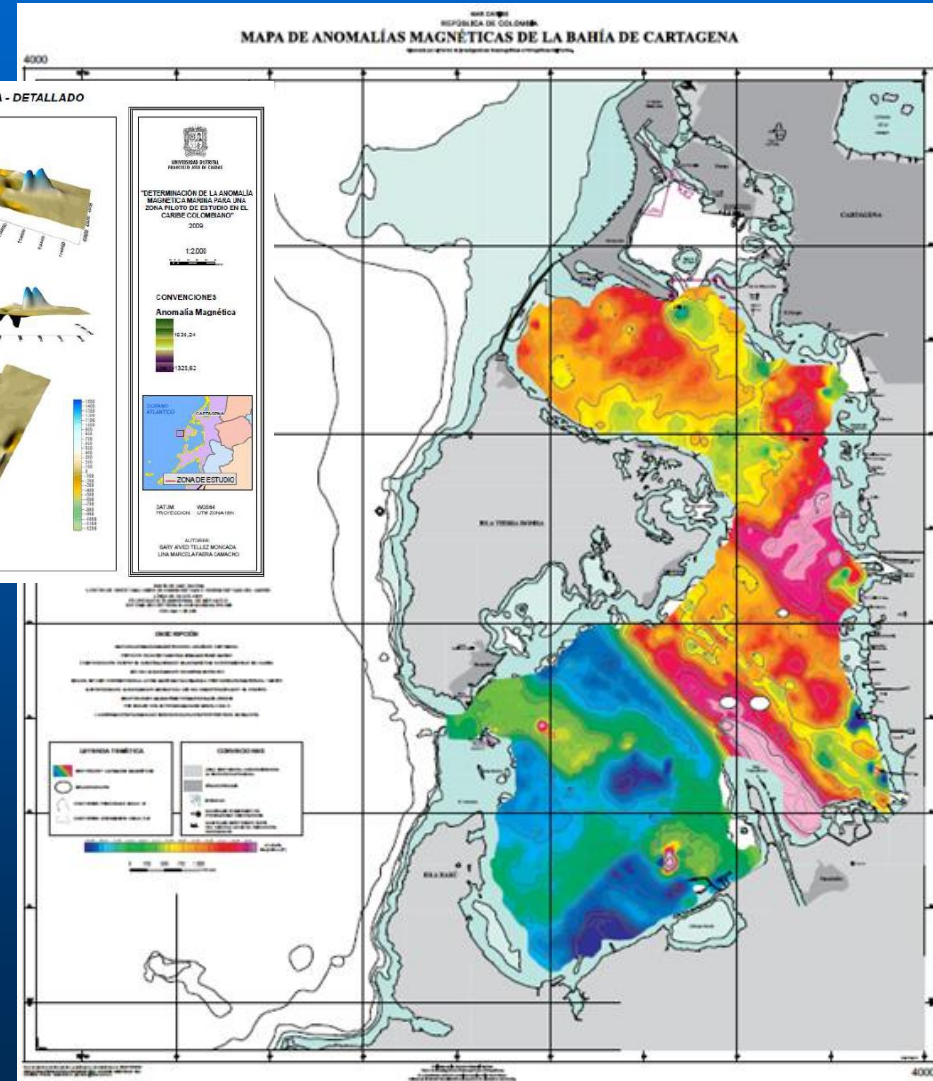
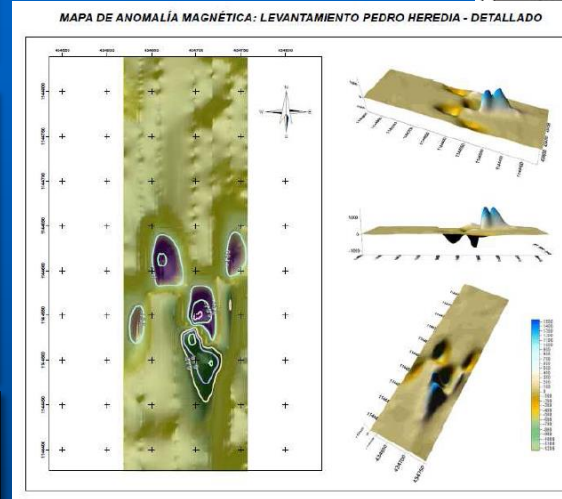
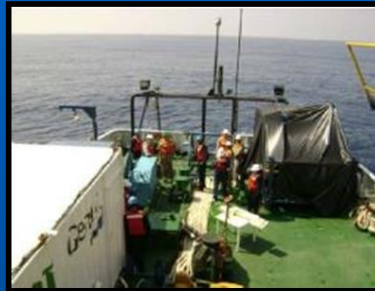


Areas surveyed

- ✦ Pacífico colombiano

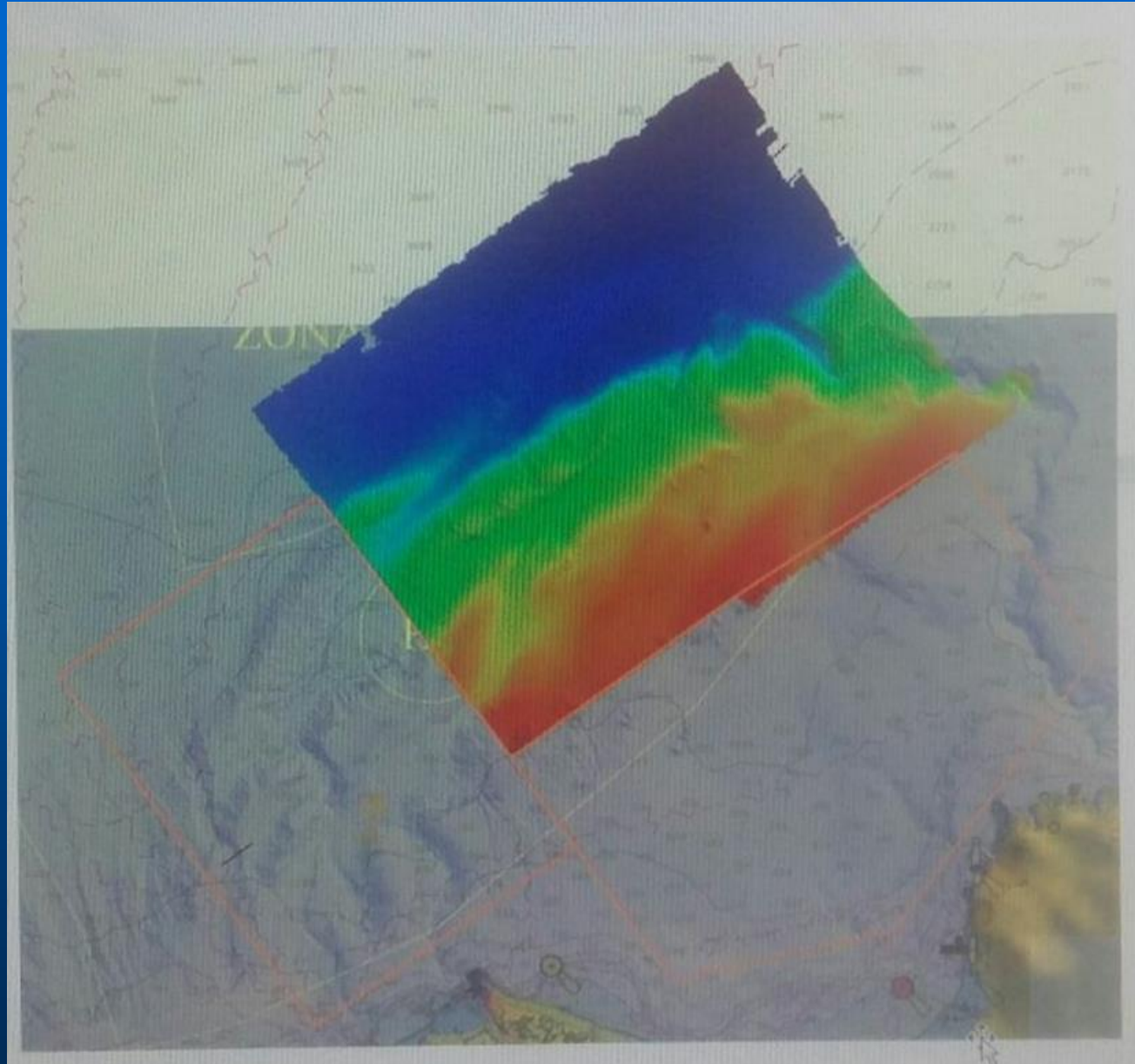


Main achievements



Thematic Chart. Magnetic anomalies
Bahía de Cartagena

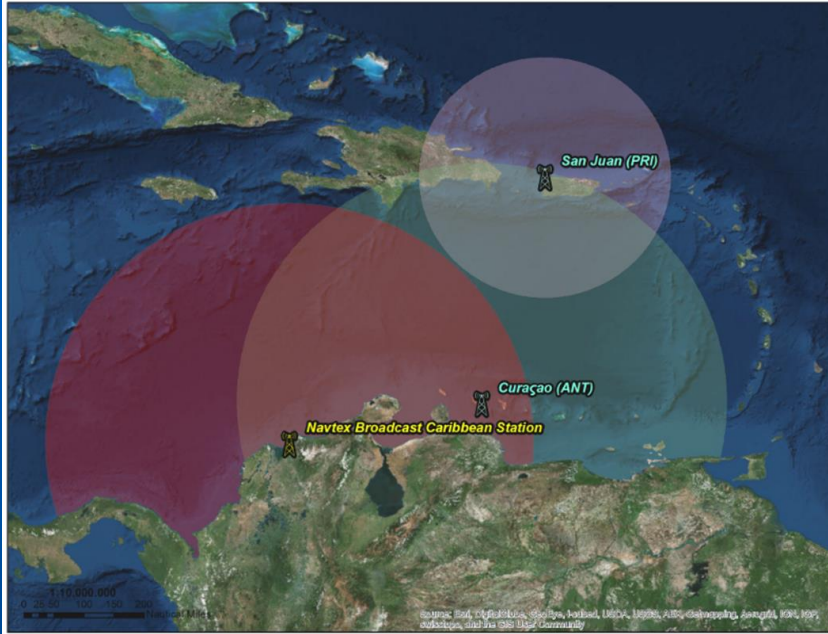
Main achievements



Searching the landslide undersea

MSDI

NAVTEX 518 kHz Service in NAVAREA IV



NAVTEX 518 kHz Service in NAVAREA XII - XVI



NAVTEX stations

Nautical publications

CATÁLOGO DE CARTAS NAÚTICAS
DE LOS OCEANOS Y COSTAS COLOMBIANAS

REPUBLICA DE COLOMBIA
BAHÍA INTERNA DE CARTAGENA

ANUAL Derrotero
de las Costas y Áreas Insulares
del Caribe y Pacífico Colombiano

Octubre / 2016
Cartagena de Indias D. T. y C.

ISSN XXXX-XXXX

No. 1

ANUAL CARTA 001
Abreviaturas y Términos Usados en las
Cartas Náuticas Colombianas

Abril / 2016
Cartagena de Indias D. T. y C.

ISSN XXXX-XXXX

No. 1

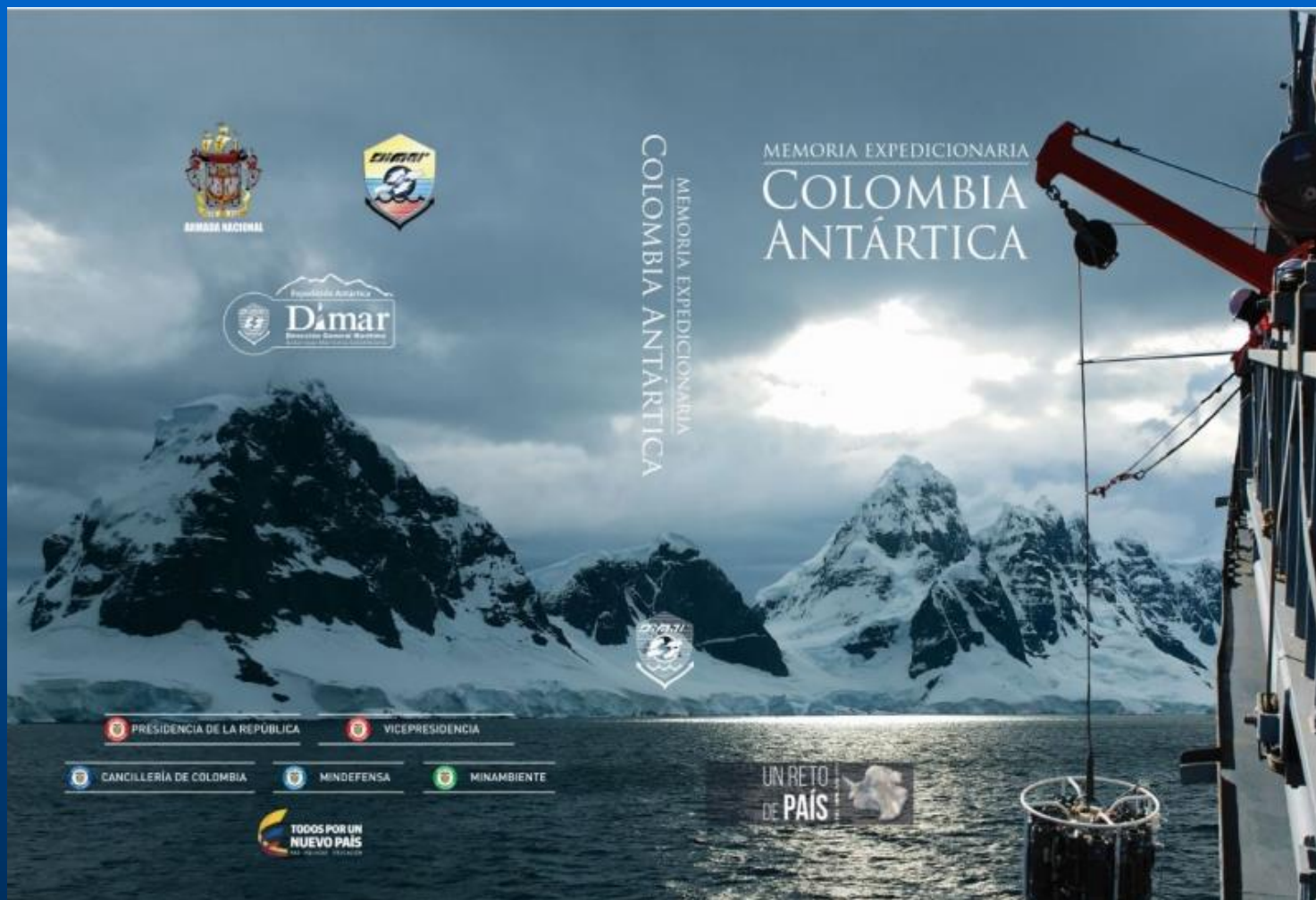
ANUAL Lista de Luces
República de Colombia
Costas Caribe y Pacífica Colombianas
Actualizada Hasta el 17 de mayo de 2016

17 Mayo de 2016
Cartagena de Indias D. T. y C.

ISSN XXXX-XXXX

No. 1

Nautical publications



Actions required of MACHC:

Continue working in Capacity Building with the IHO support

Support to Panamá in his hydrographic development

Continue the cooperation with NOAA

The HS of Colombia in charge of the Center for Oceanographic and Hydrographic Research of the Caribbean under the Direction of the Maritime General Directorate and in conjunction with the Oceanographic and Hydrographic Research Center of the Pacific will continue to increase the Hydrography nationally and internationally in order to seek to meet the objectives of the International Hydrographic Organization and the International Maritime Organization and all other national and global organizations that seek to preserve the environment.