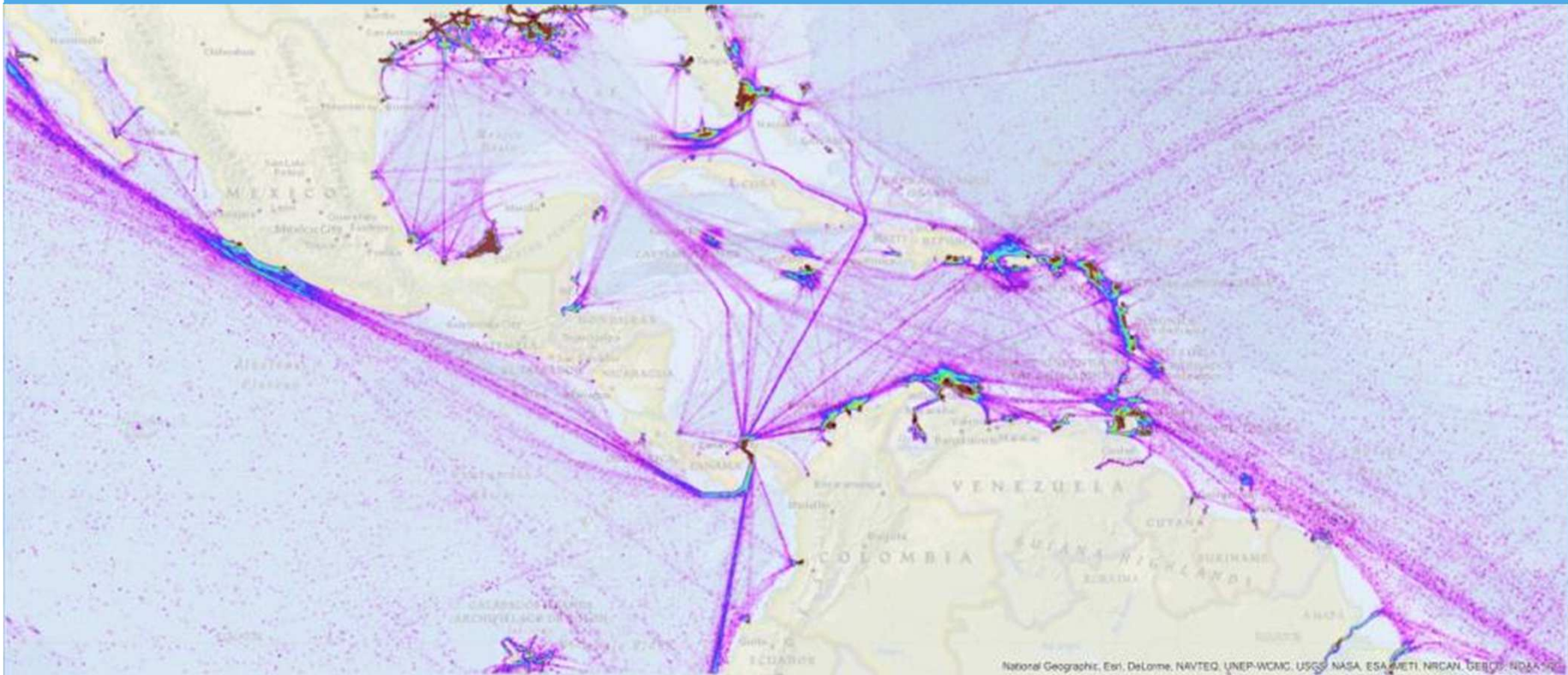


MesoAmerican and Caribbean Sea Hydrographic Commission

Integrated Charting Committee



Presentation Agenda

- Membership and Work Schedule
- ENC Progress
- ENC Online
- INT Chart Updates
- Work Plan

Work Procedures

- * Quarterly calls hosted by NOAA.
 - * Great participation but still having problems with including some offices
- * Continued to use an evolving GIS planning tool to guide discussions

Port Analysis Evaluation – Gaps

43 out of the 373 world-wide Cruise Ship
Ports/Anchorages not covered by Band 4, 5, or 6
ENCs are located in the MACHC



Port Analysis Evaluation – Gaps

- * 14 of the 43 ports identified will have large scale ENC coverage in the next year or two
 - * 6 ports in Mexico will have band 4 or 5 ENCs
 - * 2 ports in Cuba will have band 4 or 5 ENCs
 - * 4 ports in Venezuela will have large scale ENCs
 - * 2 ports in Bahamas will have band 5 or 6 ENCs



Proyecto Orinoco Tramo Boca Grande Matanzas



ENC CANAL DEL RÍO ORINOCO

PRODUCIR 12 CELDAS ELECTRONICAS DEL CANAL DEL RÍO ORINOCO

BANDA 4

ESCALA DE COMPILACIÓN: 1/25.000

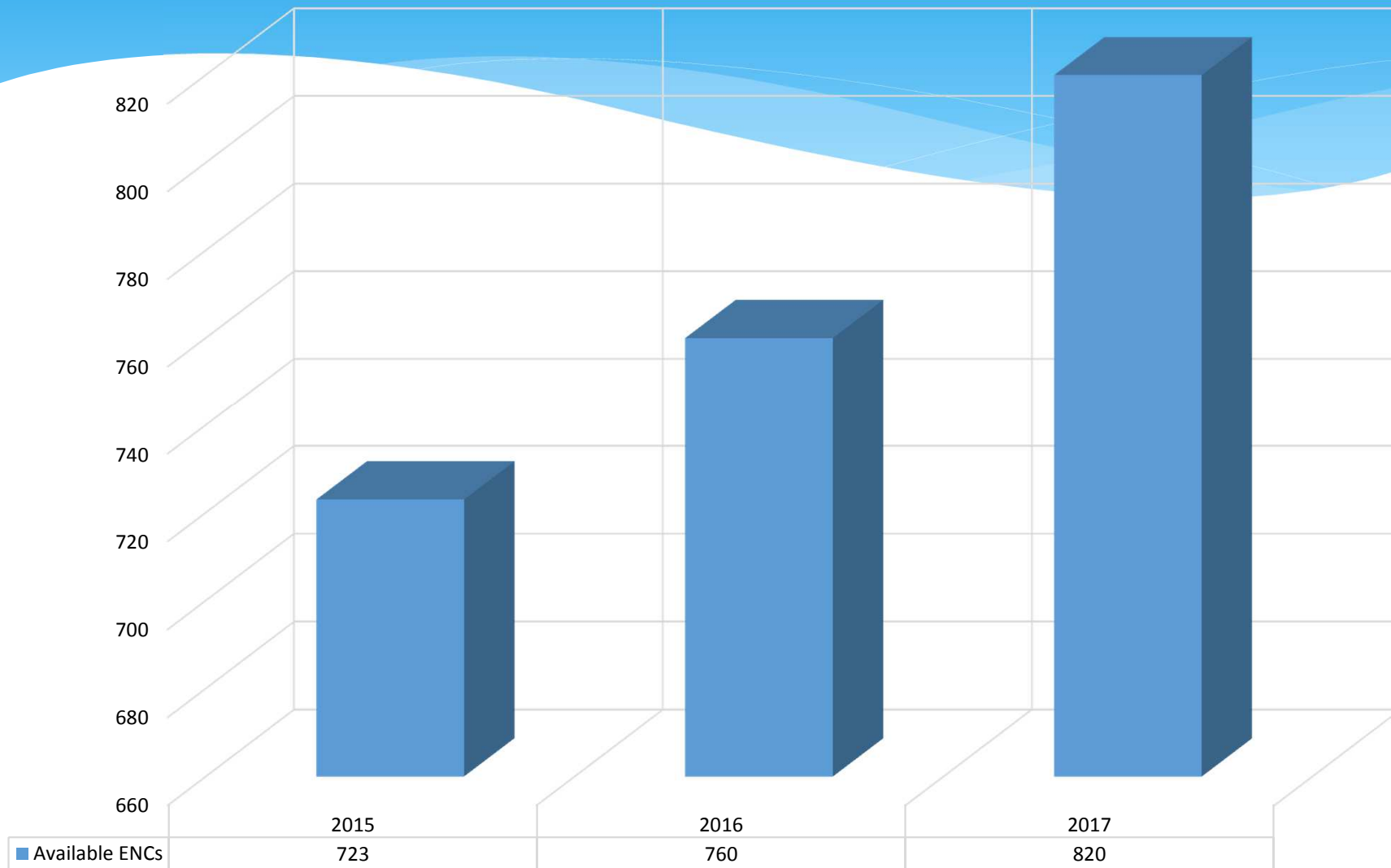
DATOS: INC / SHN 2014 / BO-11



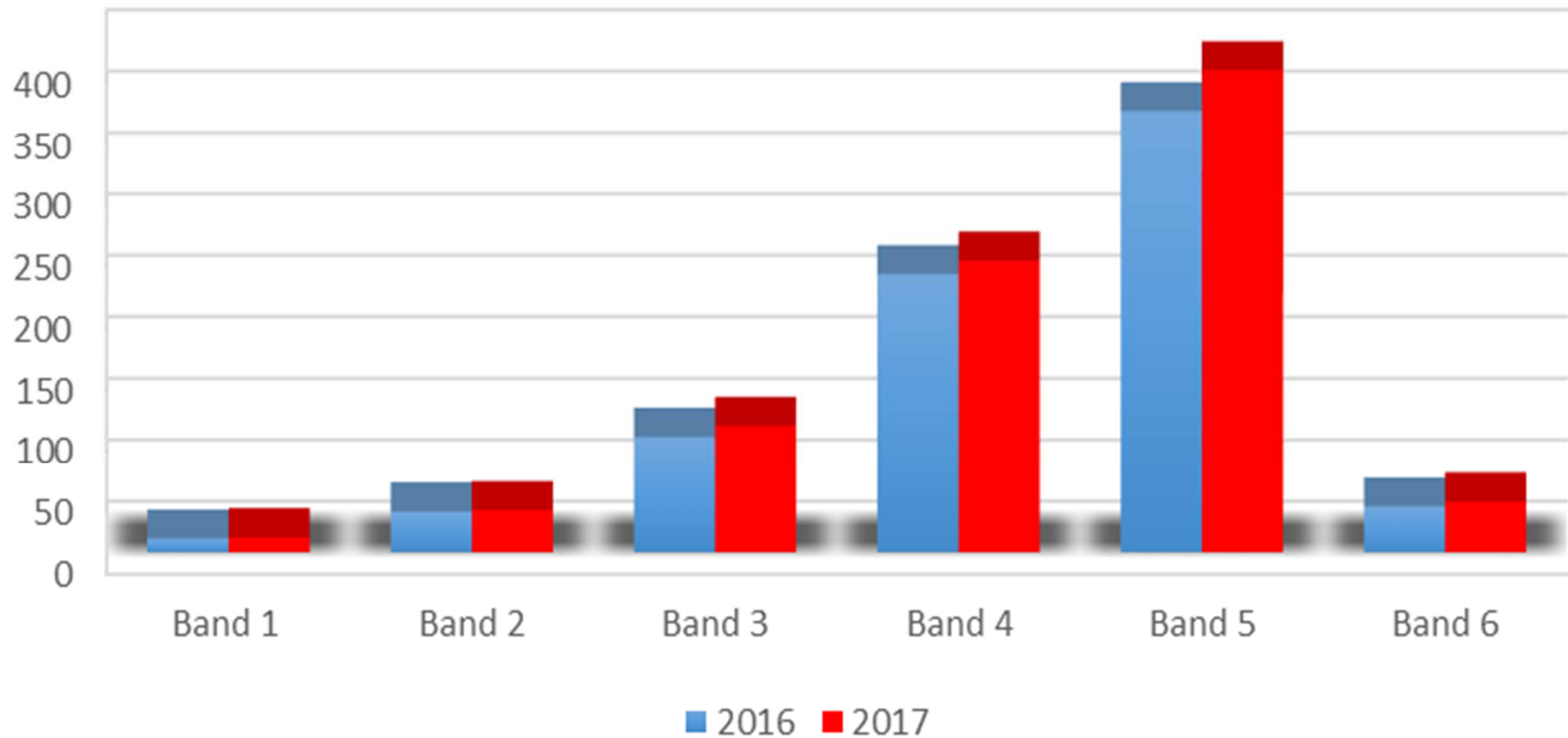
MACHC ENC Availability 2016 Summary

Newly Available cells in 2017	60
Cells canceled in 2017	3
Total Cells Available 2016	760
Total Cells Available 2017	820
Net New Cells 2017	57

MACHC ENC's Available

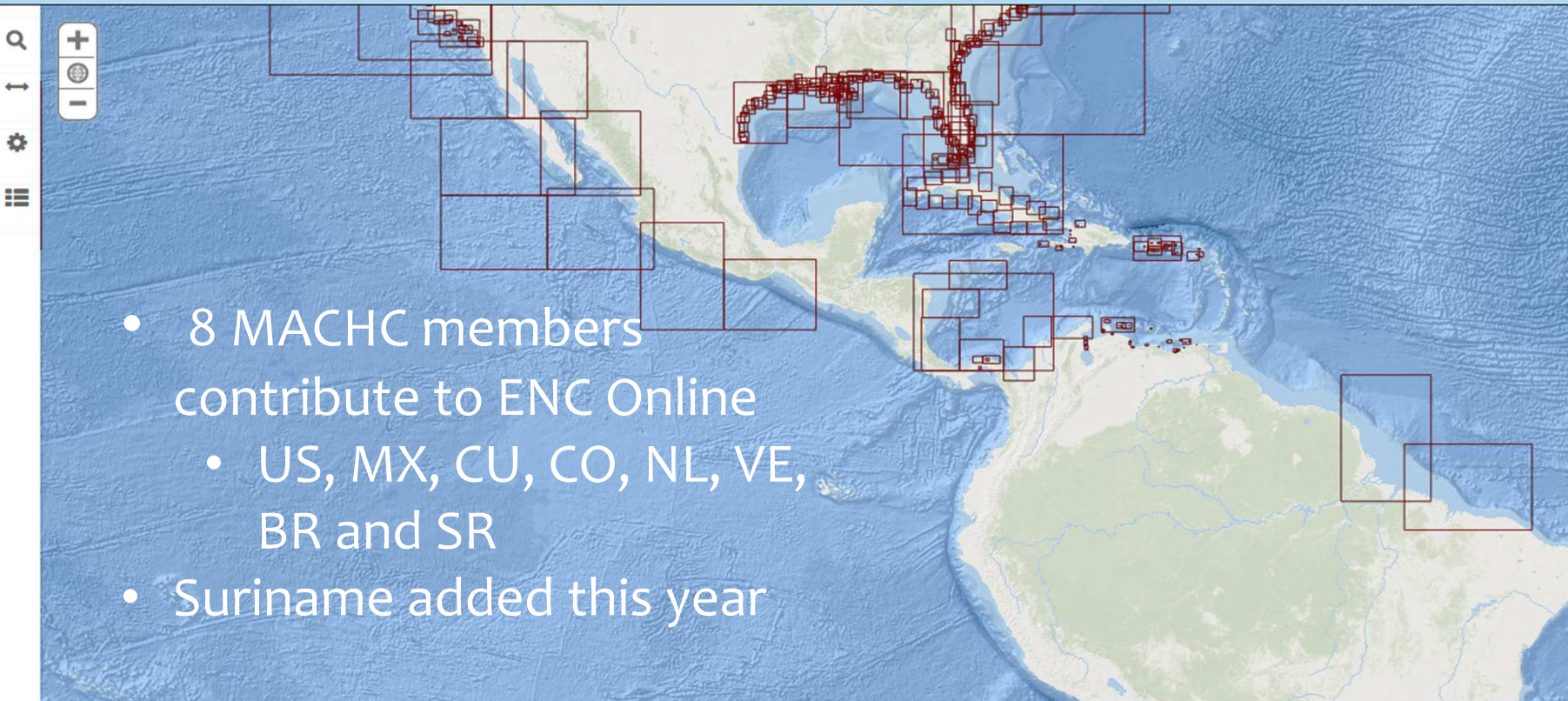


MACHC ENC Availability by Usage Band

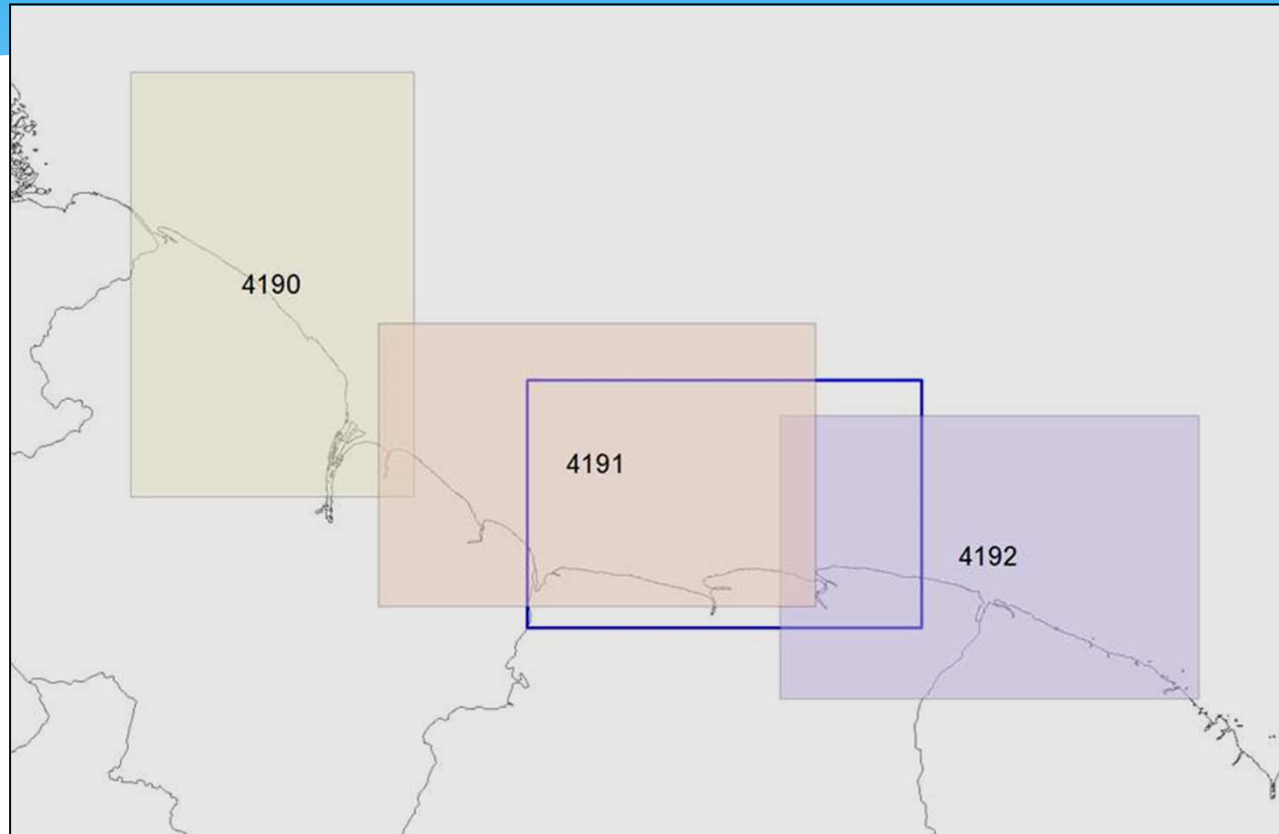


MACHC ENC Online

MACHC ENOnline



INT Chart 4191

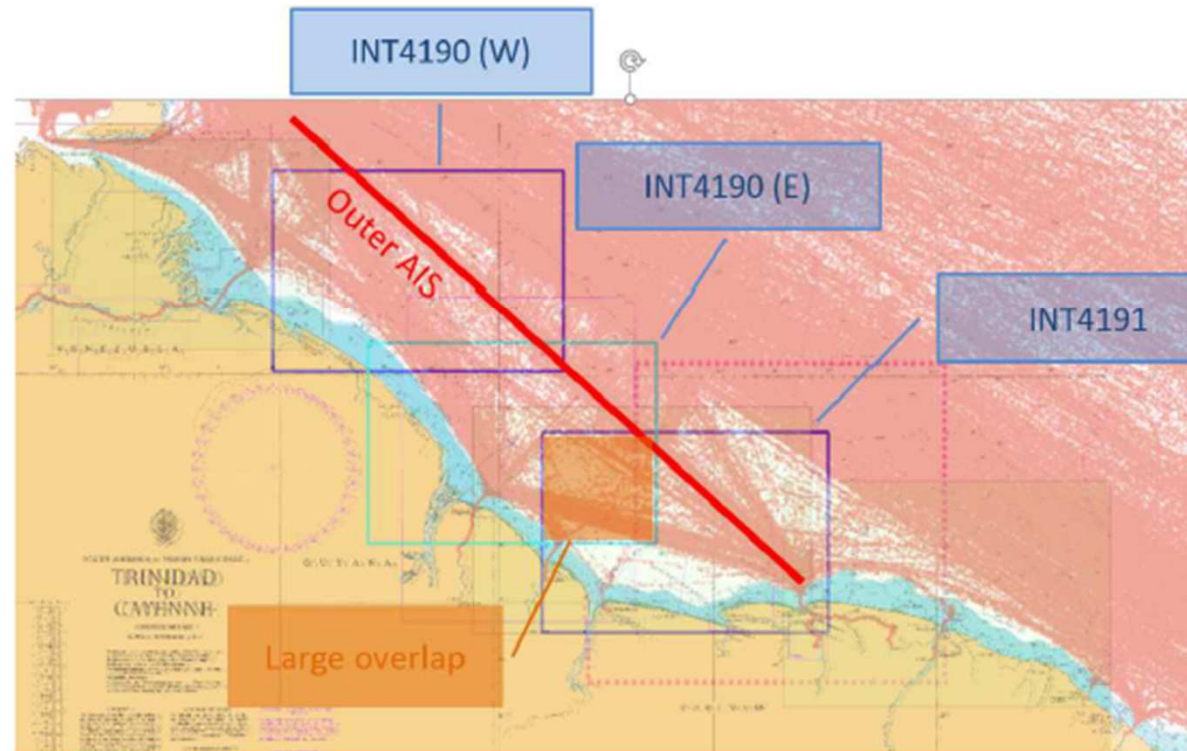


New proposed limits for Chart 4191

INT Chart 4191

Proposal 2 – All landscape charts:

- 3 landscape charts as shown below will also cover the outer AIS route.
- There again is a small lack of coverage in the NW which could be resolved as per the recommendation in proposal 1 above. This shift of INT4100 would enable 4190W to move south to provide more room for chart furniture (title)
- There is an unavoidable large overlap with 4190E and 4191. Reducing the E-W dimension of 4191 to reduce this overlap would remove New Amsterdam and the Berbice River from the INT coverage (although not suitable for navigation at this scale)

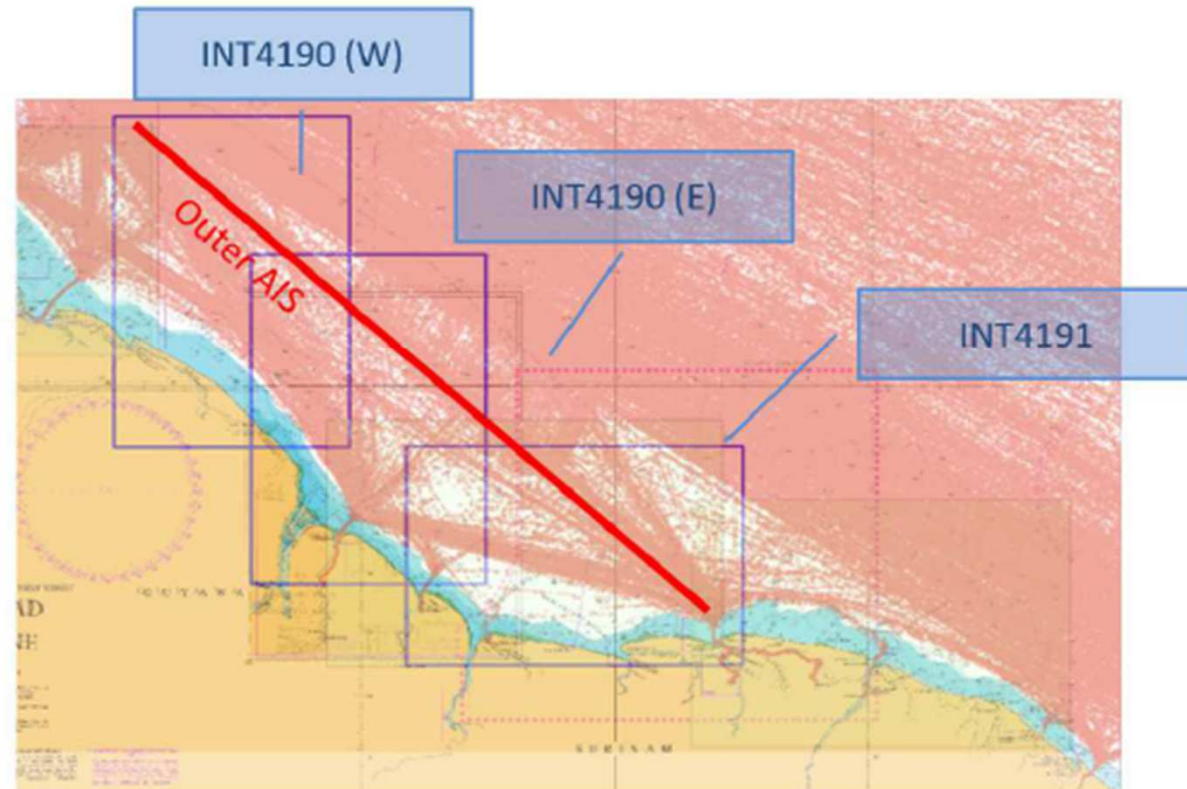


New proposed limits for Chart 4191

INT Chart 4191

Proposal 3 – Portrait and landscape charts:

- One landscape and 2 portrait charts to the west.
- Small gap in AIS between portrait and landscape charts



New proposed limits for Chart 4191

Work Plan

DELIVERY DATE (2018)	ACTIONS	
	Electronic Chart Activities	INT Chart Activities
Jan 1 – Feb 29	Member States to provide updates based on discussions, and consideration of the individual Ports Analysis presented at the Dec 14, 2016 MICC meeting on plans to address gaps in ENC coverage within their area.	Member States to provide updates based on discussions, and consideration of the individual Ports Reports presented at the Dec 14, 2016 MICC on plans.
March 9	In preparation for the quarterly Conference Call, Member States to provide updates to: <ul style="list-style-type: none"> the list of available ENCs resolutions of any gaps/overlaps identified. 	In preparation for the quarterly Conference Call, Member States to forward INT Chart metadata and shapefiles for “planned” INT Charts. Member States to propose additional coverage/adjustments for S-11, section B
Mar 20-22	Represent MACHC at WEND WG	
April 11	Hold quarterly conference call to assess status and next steps.	
May 2	Complete follow-up activities from Conference Call. Member States to provide all additional information identified during conference call.	
June 13	In preparation for the quarterly Conference Call, Member States to provide updates to: <ul style="list-style-type: none"> the list of available ENCs resolutions of any gaps/overlaps identified. 	In preparation for the quarterly Conference Call, Member States to forward INT Chart metadata and shapefiles for “planned” INT Charts. Member States to propose additional coverage/adjustments for S-11, section B
July 11	Hold quarterly conference call to assess status and prepare information as needed for subsequent communication to IRCC and IHB.	
July 25	Complete follow-up activities from Conference Call. Member States to provide all additional information identified during conference call.	
Aug 29	Investigate and/or track issues regarding consistencies and availability of ENCs and the corresponding INT (paper) Charts if problems persist.	
Sept 12		MS to forward S-11 updates to MICC technical coordinator for inclusion for Region B, S-11.

Work Plan con't.

Oct 10	<p>In preparation for the quarterly Conference Call, Member States to provide updates to:</p> <ul style="list-style-type: none"> • the list of available ENCs • resolutions of any gaps/overlaps identified. 	<p>In preparation for the quarterly Conference Call, Member States to forward INT Chart metadata and shapefiles for “planned” INT Charts. Member States to propose additional coverage/adjustments for S-11, section B</p>
Oct 24	Hold quarterly follow-up conference call to update/review and discuss MS input in preparation of 16th MACHC.	
Nov 9	Complete follow-up activities from Conference Call. Member States to provide all additional information identified during conference call.	
Nov 15	Provide all updates, to the Technical Coordinator for the MICC Report to 19 th MACHC.	
Dec 2018	Provide update on 2018 MICC activities/accomplishments	

Requests to the MACHC

- * Approve the Work Plan
- * Endorse the progress on ENC production throughout the region
- * Encourage MACHC ENC Online participation



Thank You