

# ic-enc

International Centre for Electronic  
Navigational Charts

GENERAL UPDATE  
18<sup>th</sup> MACHC

# Agenda for MACHC18

## IC-ENC Operational Update

- ▶ IC-ENC Membership & Offices
- ▶ IC-ENC Core Services
  - ENC Production Support for HOs
  - IC-ENC Validation
- ▶ MACHC specific support
- ▶ Further Information

# Our Mission

*To provide services, at a low cost, to ENC Producers that ensure their ENCs are:*

- # compliant to the international standards,*
- # consistent across the global dataset,*
- # and readily available for use.*

*This is so that shipping can navigate safely, efficiently and confidently, whilst ensuring other maritime users are using the same approved data.*

# IC-ENC Members (42)

Argentina

Australia

Bahrain

Belgium

Brazil 😊

Chile

Colombia 😊

Cuba 😊

Denmark

Ecuador

Egypt

Germany

Greece

Iceland

Italy

Israel

Malaysia

Malta

Mexico 😊

Mozambique

Netherlands 😊

New Zealand

Oman

Pakistan

Panama

Peru

Philippines

Portugal

Romania

Russia

Slovenia

Solomon Islands

South Africa

Spain

Suriname 😊

Tunisia

Turkey

United Kingdom 😊

United States 😊

Uruguay

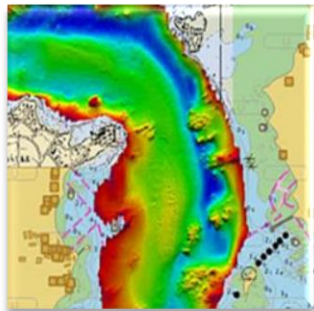
Venezuela 😊

# Membership & IC-ENC Offices

(Australia, Brazil, UK, US)



# IC-ENC Core Services



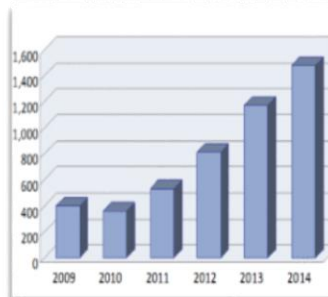
**ENC Production Support**



**ENC Validation**



**ENC Distribution**



**Revenue Management & Financial Reporting**

# Production Support Services

- ▶ IC-ENC ENC Validation Training courses
  - 3 bronze level yearly
  
- ▶ Technical Conference
  - Yearly
  
- ▶ Internal validation
  - IC-ENC Errors Database
  - eGlobe ECDIS software supply and support
  
- ▶ *HO production staff work alongside IC-ENC validation team in IC-ENC offices*



# IC-ENC Errors Database

ic-enc

- ▶ Over 1500 messages from validation software, ECDIS and other IC-ENC sources
- ▶ Designed to assist HOs with their own internal validation of ENC's
- ▶ Includes advice on how important an issue is, and what action to take to fix the problem

The screenshot displays the 'ic-enc' Errors Database interface. On the left, there is a sidebar with a search bar and a list of error codes. The main area shows a table of errors, with 'Error (5,5)' selected. A detailed view of this error is shown in a pop-up window at the bottom.

ERROR	source	TYPE	DESCRIPTION...
Error (5,5)	TRANSAS ECDIS	HO MUST CORRECT / HO SHOULD DO	HO MUST CORRECT: Any incorrect object/attribute usage combined on their own may lead to a potentially dangerous situation. E.g. unescaped CR
EXAMPLE		Error_explains...	An apparently invalid attribute has been
DESCRIPTION		DESCRIPTION...	HO TO CORRECT: Any incorrect object/attribute usage combined on their own may lead to a potentially dangerous situation. E.g. unescaped CR
Impact_Asses...	Validator_Notes	Validator_Notes	The original classification was 'ALL 7 ERROR EOUS' SEE EDCDF_08_124
User_impact	Required_action	Required_action	When reviewing the error look at the object in the ECDIS to confirm that the
Ref	Cross_referenc...	Cross_referenc...	With an error has been reported, genuine distribution of the object should be error conform to the S57 Standard. When assessing the error remember that there be other errors that are 'both Data Analysts' that refer more specifically to same problem. I.e., use these other en
Cross_ref	c_list	c_list	
Object_Grouping	Abilities - all objects	Abilities - all objects	
Last_Updated			

DESCRIPTION	HO TO CORRECT	DESCRIPTION...	HO MUST CORRECT
DESCRIPTION	HO TO CORRECT: When an object class usage is not permitted in S57 Appendix A (Object Catalogue) or is not permitted in S57 Appendix B (SVC Product Specification)	DESCRIPTION...	HO MUST CORRECT: When an object class usage is not permitted in S57 Appendix A (Object Catalogue) or is not permitted in S57 Appendix B (SVC Product Specification)
Impact_Asses...			



# Technical Conference: ENC issues relevant to all members...

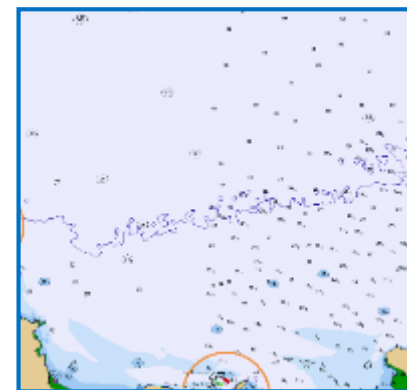


# IC-ENC Validation

- ▶ **Software analysis**
  - Assessment of S-58
  - Exchange set checks



- ▶ **IC-ENC validation team expertise**
  - Consistency Checks
  - ECDIS Checks



# The Feedback Report

ic-enc

ic-enc

- ▶ **Feedback Report** to our members for each cell
- ▶ Created from the error classifications and decision making from validation
- ▶ Reports issues back to HO
- ▶ Is member dependent “Partnership Agreement”

IC-ENC form P007

## ENC Validation Report

### Cell Information:

Cell Name – US5ME25M.000  
Edition Number – 8  
CRC – 48A38DCD

Date Received - 14 Feb 2017

Service Level:  
Reduced

### Validated By:

Name – Jenny Thacker  
Phone – (+44) (0) 1823 723389  
Email – jenny.thacker@ic-enc.org

Date Validated – 17 Feb 2017

## Validation Conclusion

ACCEPTED FOR DISTRIBUTION ON 24 Feb 2017

## Validation Comments

### Correction required as soon as possible:

*It is unnecessary to withhold the ENC from distribution for these particular issues, but to maintain good practice it is recommended that you correct them as soon as possible.*

#### 1. TXTDSC describes raster portrayal not ENC

##### Description:

See US5ME25B.TXT pasted below.

The recommended track for deep draft vessels entering and departing Penobscot Bay and River is attributed with a textual description (TXTDSC) which describes the depiction of the channel on the raster chart. It says “Two-way traffic is possible within all parts of the green-tinted areas.” On the ENC no such green tint exists.

##### Impact:

Telling the mariner that he/she can find an object with a particular description, when the described object is not depicted that way may cause confusion and cause the mariner not to find the object described. Since the object described by this note is an important traffic lane it is even more significant.

##### Action:

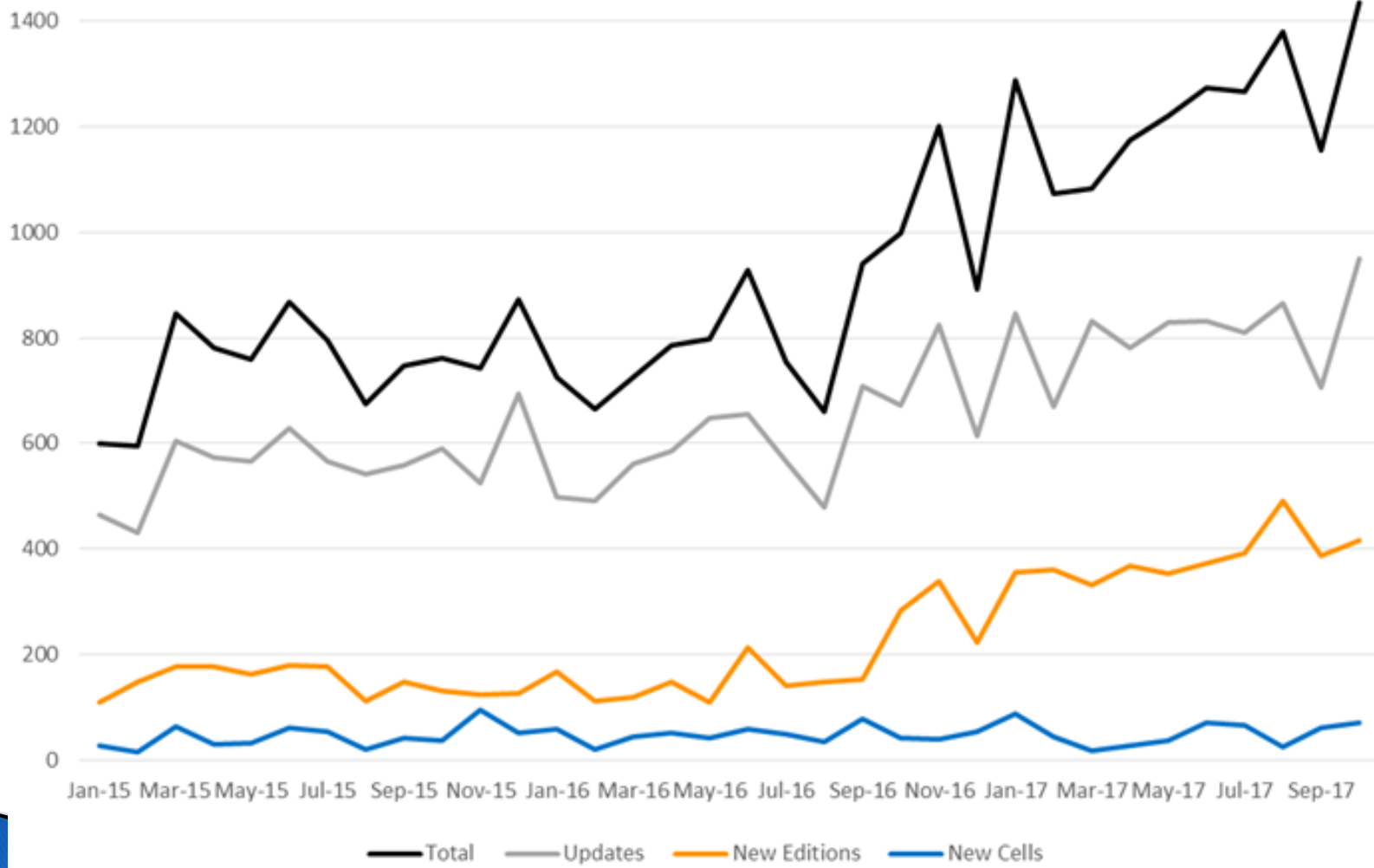
Remove the portion of the TXTDSC where it describes the raster chart colours (highlighted in yellow). Consider how to reword the remaining part of the paragraph for the best possible clarity.

##### TXTDSC:

US5ME25B.TXT

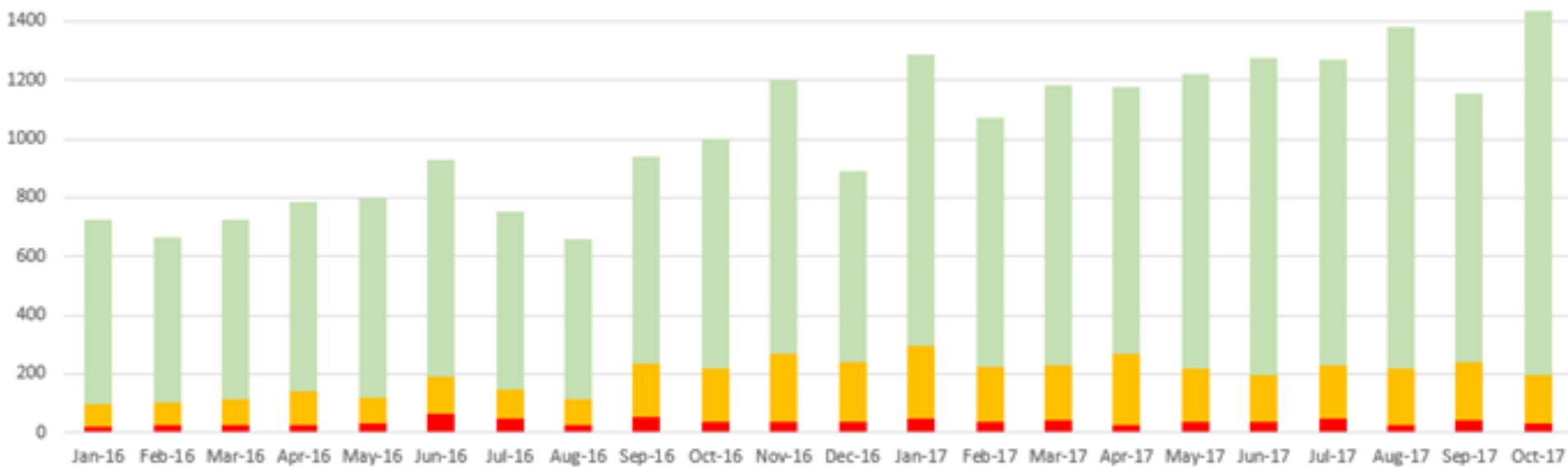
Deep draft vessels entering and departing Penobscot Bay and River are requested to remain within the Recommended Vessel Route. Two-way traffic is possible within all parts of the green-tinted areas. Other vessels, while not excluded, should exercise caution in these areas and monitor VHF channel 16 or 13 for information concerning vessels transiting these areas. See U.S. Coast Pilot 1, Chapter 7.

# Volume of Validations per month





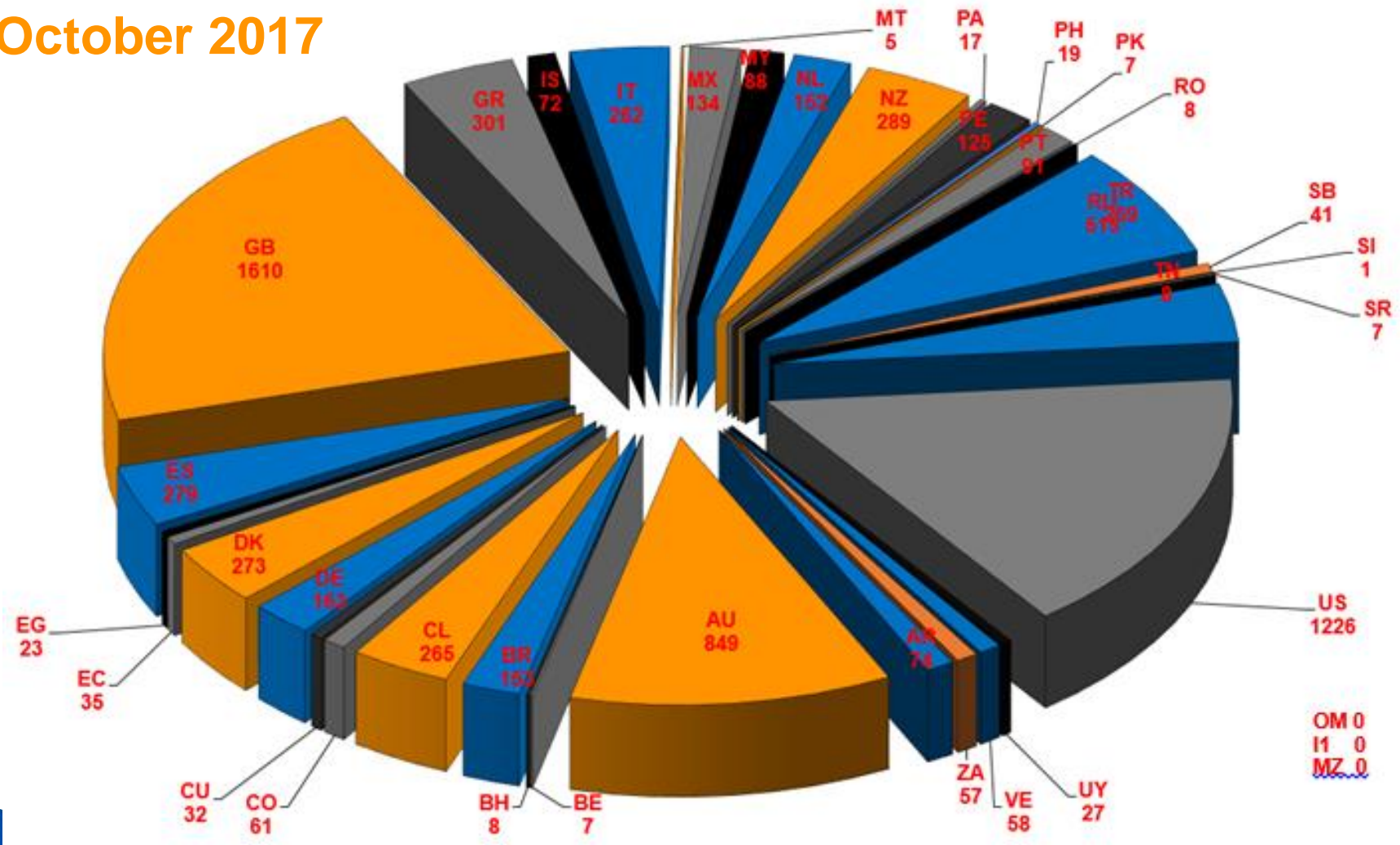
# Feedback provided



- ▶ **Red:** It can be seen that each month IC-ENC identifies, and prevents from being released, a significant number of safety critical issues (about 50 per month)
- ▶ **Amber:** Additionally, about 200 validation report per month contain advisory comments regarding improving the data quality
- ▶ **Green:** No action recommended – usually small Update files

# IC-ENC ENC Folio – 7611 ENC's

October 2017



# IC-ENC MACHC specific:

- ▶ Supports the MICC conference calls
- ▶ Provides six monthly update of approved ENC data to MACHC ENC Online
- ▶ RHC ENC overlap report
- ▶ US and Brazil regional offices:
  - Correct time zone
  - Spanish language support
  - Local/regional knowledge



# MACHC region ENCs available

Producer	Berthing	Harbour	Approach	Coastal	General	Overview	Total
Brazil			5	5	2		12
Colombia	3	19	16	7	2		47
Cuba		7	3	22			32
France (PRIMAR)	5	24	10	4	4		47
Mexico	14	72	37	11			134
Netherlands	5	13	5	1			24
Panama CA	2	5					7
Panama MA		5	3	2			10
Suriname		4	2	1			7
United Kingdom	7	76	54	34	22	10	203
USA	5	129	72	15	5	4	230
Venezuela	3	35	16	5			59
	44	389	223	107	35	14	812

# For further information...

# www.ic-enc.org

ic-enc

ic-enc

Hydrographic Offices | VARs | IC-ENC

Search... 

[Home](#) [About Us](#) [Core Services](#) [Coverage](#) [Membership](#) [Capacity Building](#) [Contact us](#) [News](#)

Members - 42



## Welcome from the IC-ENC Chairman



Capt. Marc van der Donck

Dear Visitor,

### Annual Reports

[2016 Annual Report](#)

[2015 Annual Report](#)

[2014 Annual Report](#)

### News

[IC-ENC Steering Committee  
19 Discussion Papers](#)

[IC-ENC Issues Largest  
Weekly Release of Data](#)

[IC-ENC Welcomes  
Solomon Islands as its  
42nd Member](#)

[IC-ENC Latin America  
First Detiday!](#)

[IC-ENC Technical  
Conference 2017](#)

[International Team](#)

# Summary

- ▶ Core Services:
  - Production Support, Validation, Distribution, Revenue Management
- ▶ Currently serving 42 Member HOs, and supporting about half of the world's ENC's
- ▶ Specific support to MACHC

ic-enc

**QUESTIONS?**