

19th Meeting of the Meso America – Caribbean Sea Hydrographic Commission

National Report by France



International Hydrographic Organization
Organisation Hydrographique Internationale

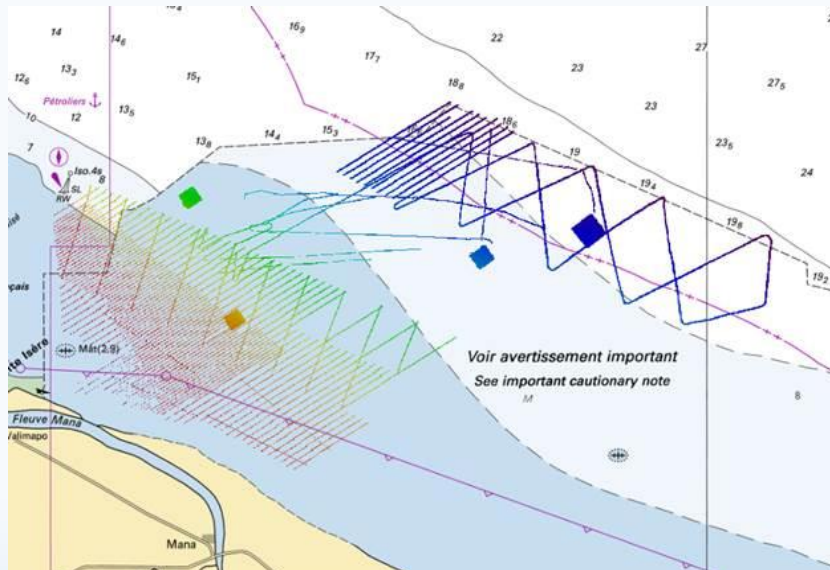


Main achievements during the year

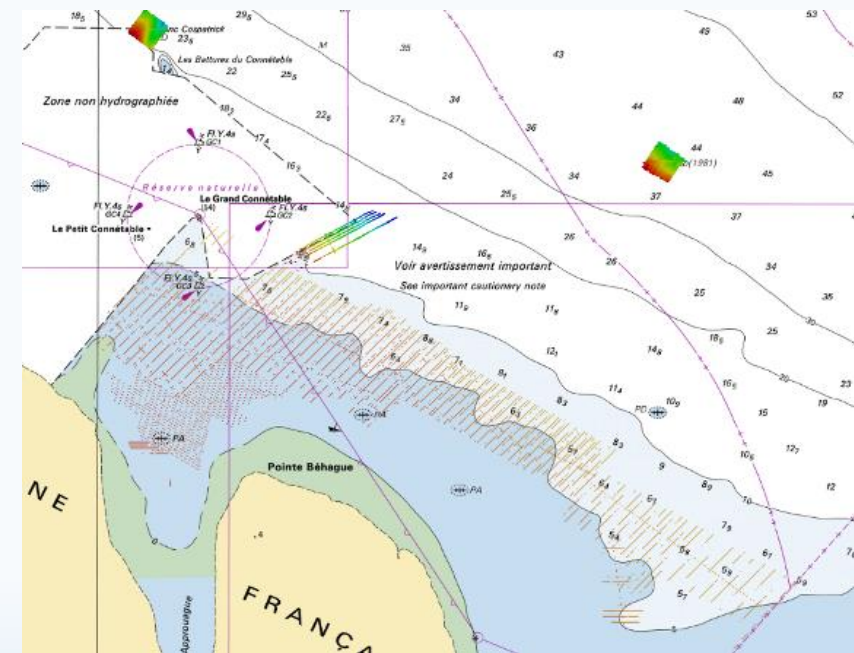
- **New surveys**

New surveys along the coast of French Guyana:

BH2 Borda September-October 2018



Approach to the mouth of Mana river



Approaches to Approuague and Oyapock rivers



Main achievements during the year

- **New surveys**

New surveys along the coast of French Guyana:

BH2 Borda September-October 2018

Opportunity for on-board training for 2 MAS hydrographers



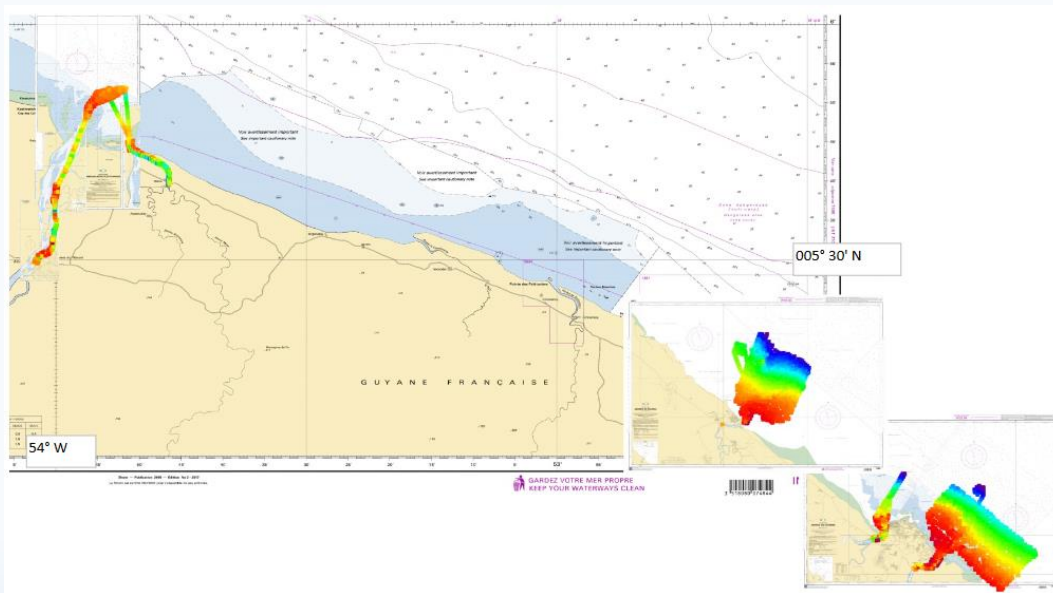
- Shallow water survey on-board one of the hydrographic launches (MBES, SBES, SVP)
- MBES processing on-board *BH2 Borda*



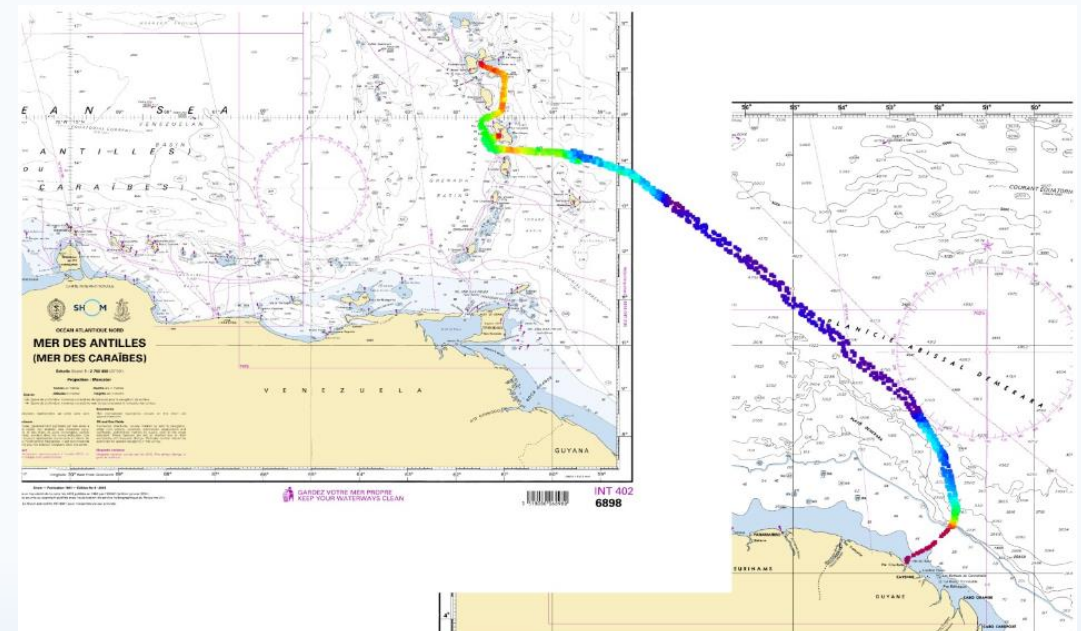
Main achievements during the year

- **New surveys**

Several third parties surveys on French waters received in 2018 (French Guyana, Martinique and Guadeloupe)



French Guyana's EEZ – DM Guyane



French Guyana & Antilla - RV Ridley Thomas



Main achievements during the year

- **New equipment's**

Mid-life upgrade of BHO *Beautemps-Beaupré* has been conducted

- **New charts**

Since last conference:

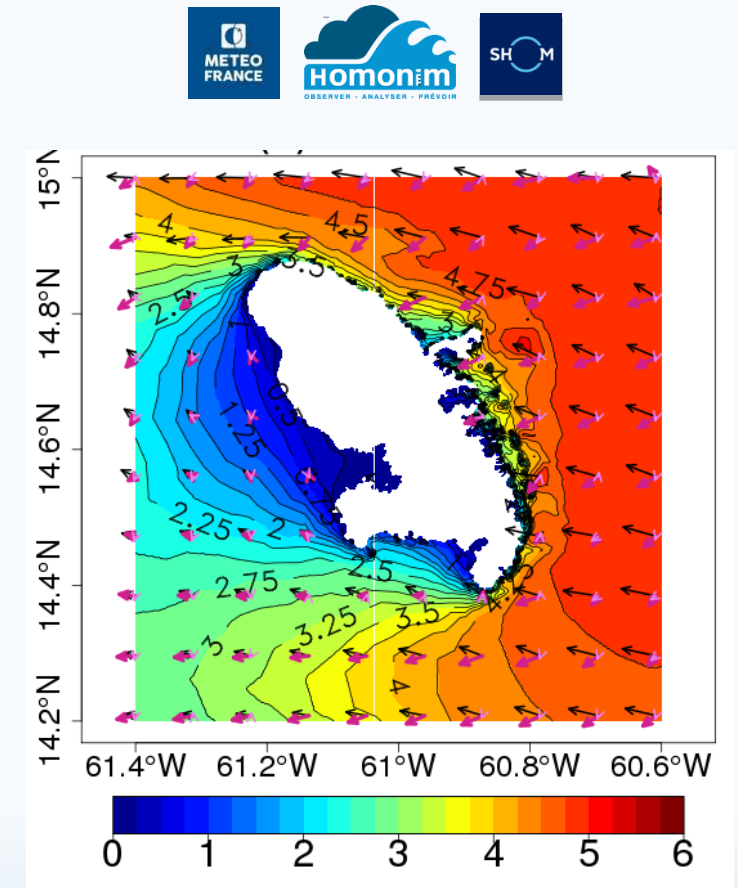
- 4 new ENC cells : FR57472E, FR57102A, FR57102C & FR57102D
- 3 new INT charts : INT4070 (FR7625), INT4184 (FR7631) & INT4182 (FR7630)
- 4 new editions of national charts : 6892, 7101, 7102 & 7377



Main achievements during the year

- **Storm surges and waves modeling capacities**
 - Production of a first range of multi-scale bathymetric digital terrain models, crucial to improve coastal hydrodynamics modelling,
 - Fully operational implementation of a regional storm surge forecast model and coastal wave models over French Antilles and French Guyana.

Example of coastal wave forecast around Martinique island



Survey plan 2019-2020 in the MACHC region

- **2019**

Combined topo-bathymetric lidar survey of the French Collectivities of Saint-Martin and Saint-Barthélemy scheduled in February 2019

- **2020**

Pursue of survey works (MBES) in coastal waters of Saint-Martin and Saint-Barthélemy in 2020

Long term recovery effort following Irma hurricane



Progress on MSDI

Since December 3rd 2017, easier access to Shom core data: bathymetric data, wrecks, cables, bottom types, maritime limits, and toponyms databases

SHOM L'océan en référence

L'espace de diffusion
Professionnels

Core maritime geospatial
databases download at **diffusion.shom.fr**

Maritime boundaries Bathymetry Wrecks Underwater cables and pipelines Toponyms Nature of seabeds

@shom_fr @Shom.fr @shom_fr

Distributed under Creative Commons « CC-BY-SA 4.0 » licence



Progress on MSDI

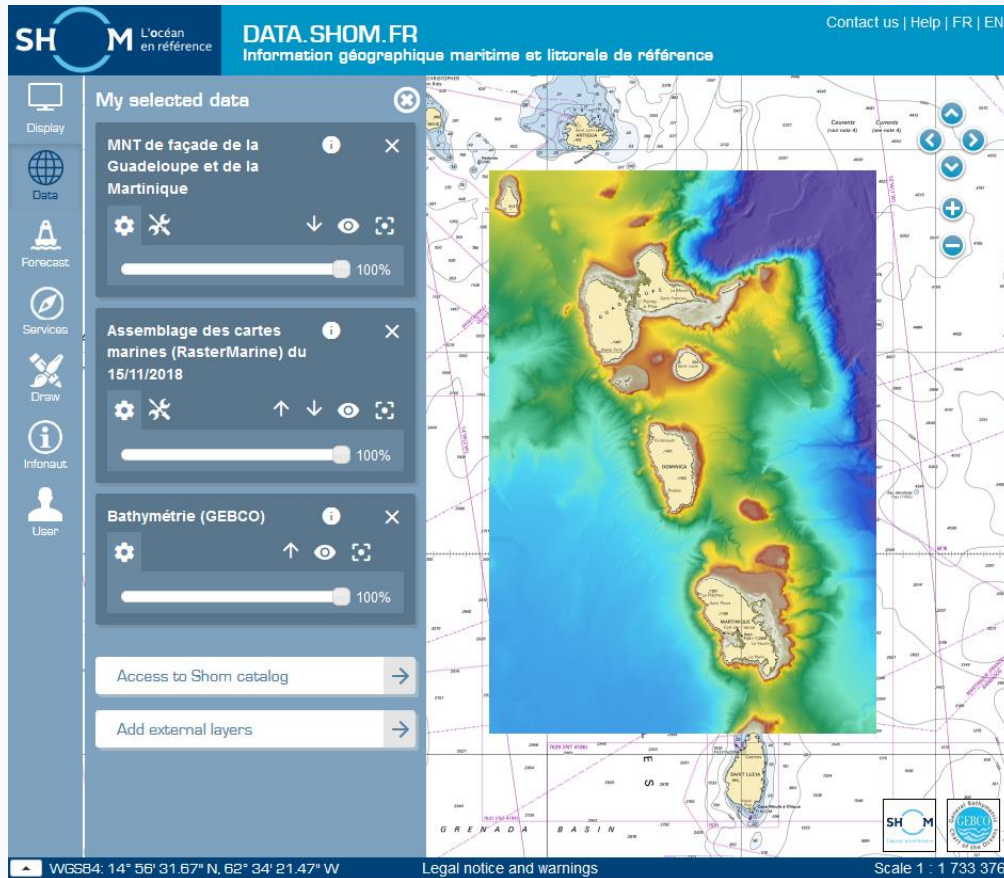
Shom's maritime and coastal geographic information portal data.shom.fr regularly updated and improved:

- Improved / new tools: improved cartographic tools, new timeline function
- Improved / new content: oceanographic data, administrative limits, new bathymetric DTMs

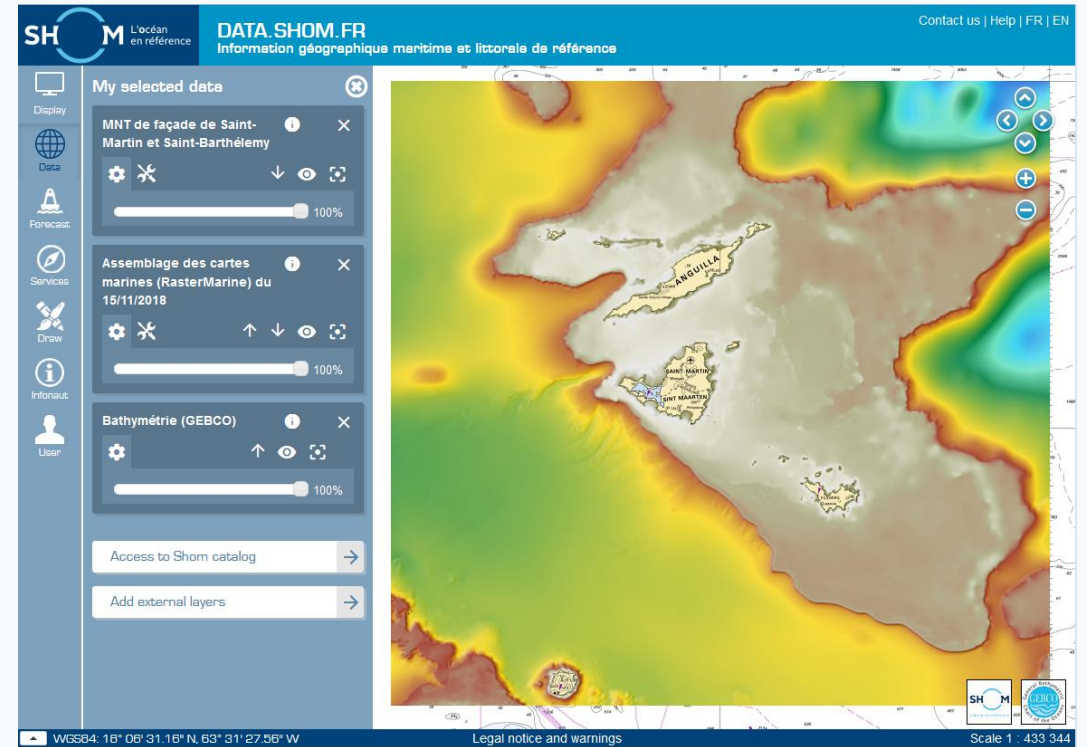


Progress on MSDI

Shom's portals
Data.shom.fr
Diffusion.shom.fr



100m global bathymetric DTM of Martinique and Guadeloupe islands

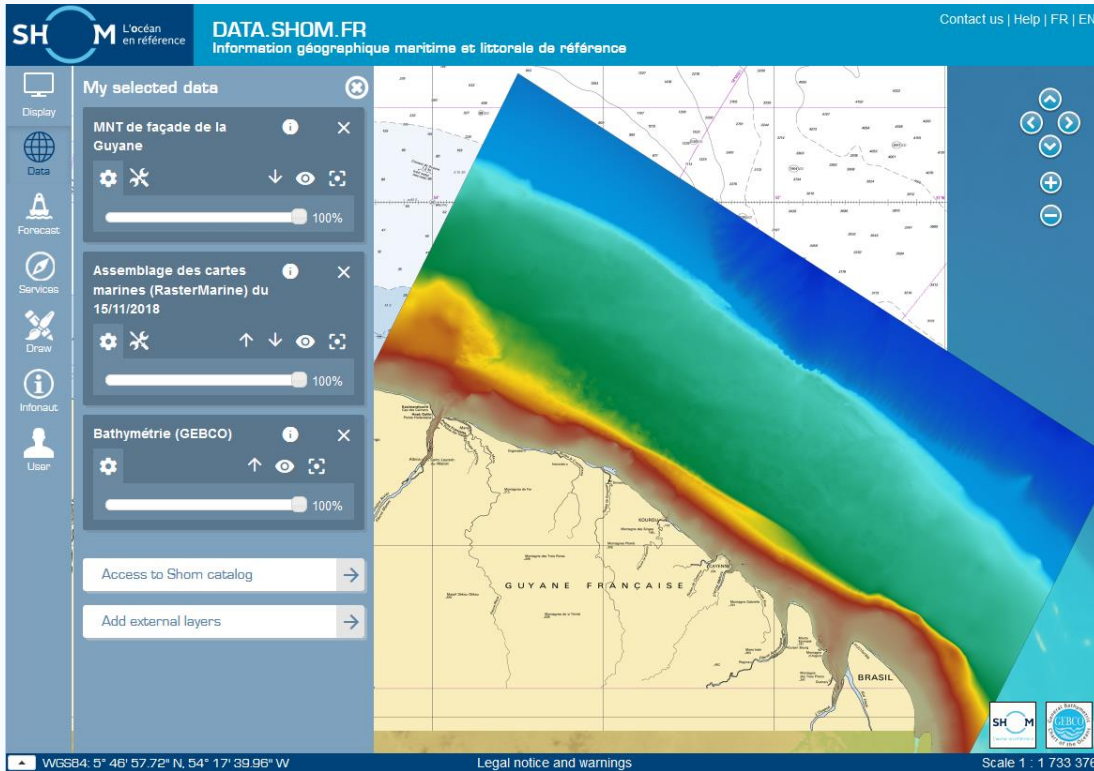


100m global bathymetric DTM of Saint-Martin and Saint-Barthélemy



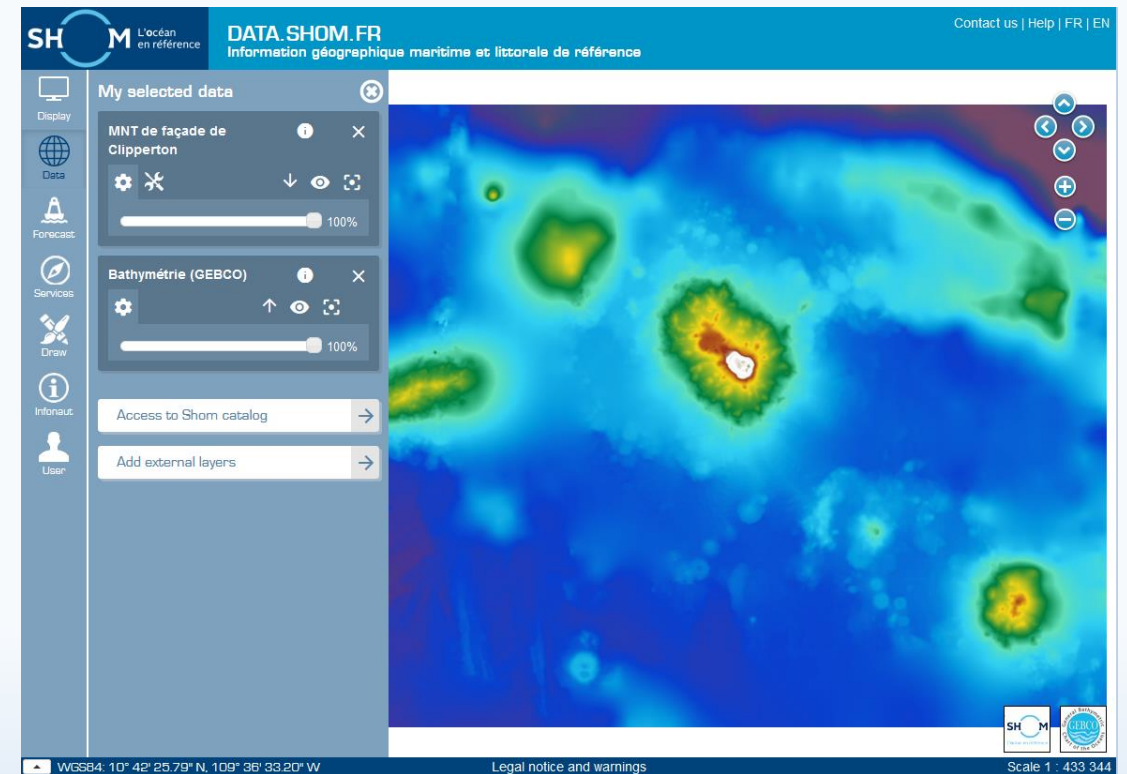
Progress on MSDI

Shom's portals
Data.shom.fr
Diffusion.shom.fr



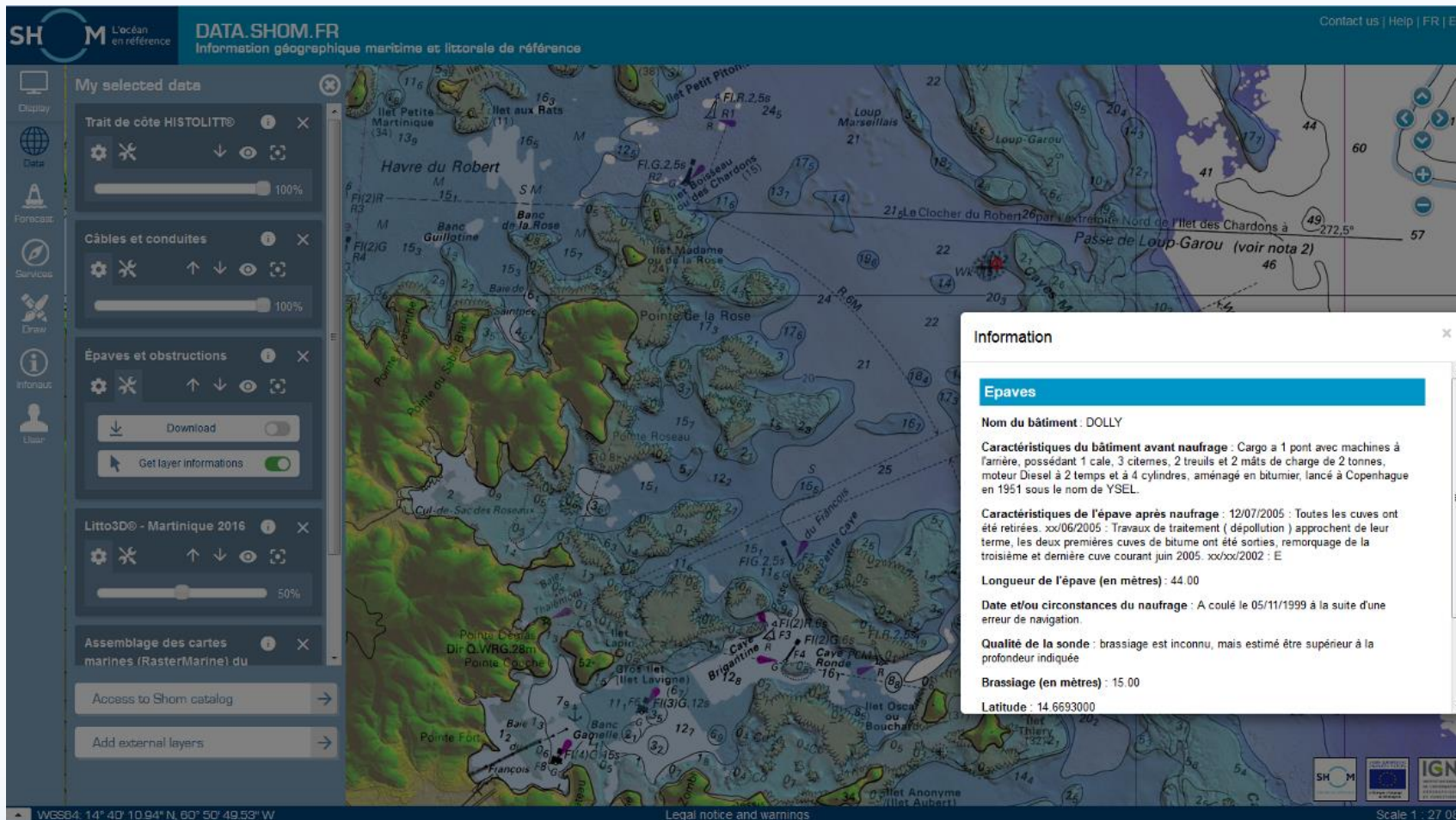
100m global bathymetric DTM of French Guyana

100m global bathymetric DTM of Clipperton Island



Progress on MSDI

Shom's portals
Data.shom.fr
Diffusion.shom.fr



Nautical charts (RasterMarine), coastline, topo-bathy lidar, wrecks



International Hydrographic Organization
Organisation Hydrographique Internationale



Progress on MSDI

Shom's portals
Data.shom.fr
Diffusion.shom.fr

The screenshot displays the SHOM DATA.SHOM.FR web application interface. The main map area shows bathymetric data for the Grande-Terre region. On the left, a sidebar titled "My selected data" lists several layers: "Lots bathymétriques après 2005", "Lots bathymétriques entre 1970 et 1990", "Lots bathymétriques avant 1970", and "Assemblage des cartes marines (RasterMarine) du 15/11/2018". Each layer has a settings icon, a visibility toggle, and a zoom slider. Below the layers, there are buttons for "Access to Shom catalog" and "Add external layers". An "Information" popup window is open over the map, displaying details for a specific lot: "Lots bathymétriques", "Numéro du lot : S201205600-1", "Instrument : Lidar bathymétrique LADS MkII // bathymetric LiDARs", and "Nombre de sondes : 40587455". A small inset map within the popup shows the location of the lot on a larger map. A tooltip at the bottom of the map reads: "You are in 'layer interrogation' mode. Click somewhere on the layer to get more information. To exit this mode, click the interrogation icon again." The bottom of the interface shows the WGS84 coordinates (16° 12' 07.78" N, 61° 25' 40.78" W), a "Legal notice and warnings" link, and the scale (1 : 216 672).

Bathymetric data



Progress on MSDI

French maritime limits portal consultation and diffusion of the official information on the maritime delimitations of France



<https://limitesmaritimes.gouv.fr/>



ANY QUESTIONS ?



dmi-rex-d@shom.fr

Adresse postale
13 rue du Chatellier
CS 92803
29228 Brest CEDEX 2

Internet
www.shom.fr
data.shom.fr
diffusion.shom.fr

Renseignements
Tel. +33 (0) 2 56 312 312

