



National Report of Iceland

This report gives the summary of the activities that have taken place within the Icelandic Coast Guard - Hydrographic Department (ICG-HD) since the last report given at the NHC-60 meeting in April 2016.

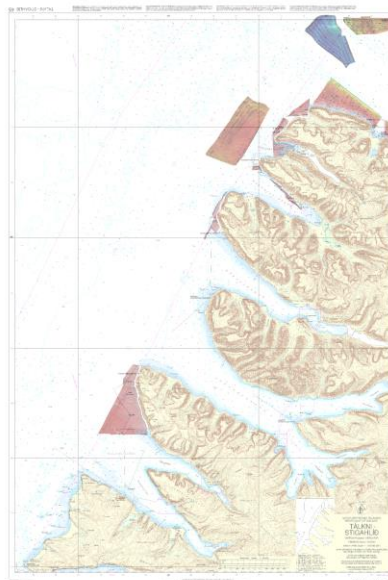
1. Icelandic Coast Guard – Hydrographic Department

The personnel of the HD survey section has increased by one since the last meeting. This new member of staff is receiving in-house training. The total number of personnel in the HD is now eight.

As mentioned last year The Government of Iceland agreed to secure funding for 2017 for a project based on 10-15 year plan to survey the EEZ of Iceland. The project, which the Marine Research Institute leads, will start this year.

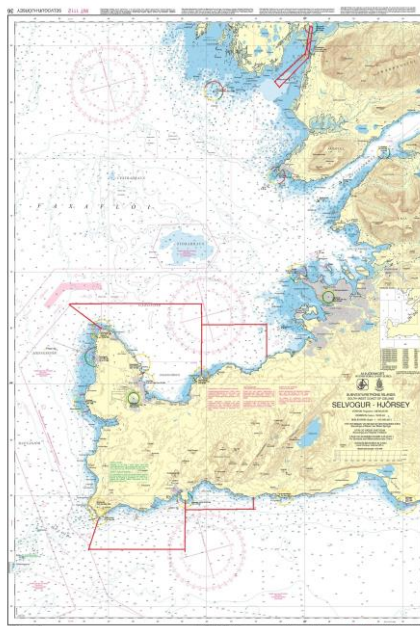
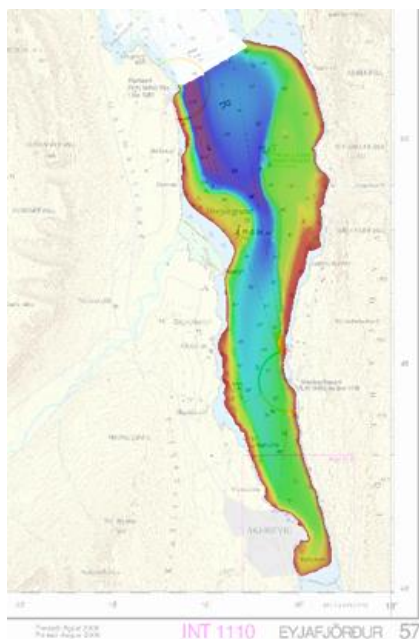
The transition from CARIS GIS to CARIS Paper Chart Composer is progressing as planned. Work on updating all 40 harbour plans on paper size A3, using CARIS PCC, is ongoing.

2. Hydrographic Surveys



Survey on the North-west coast of Iceland in 2016

Scheduled hydrographic surveys were carried out in 2016 for total of 75 days. The survey work included a multibeam survey of the northwest coast of Iceland and part of Eyjafjörður on the north coast. This work was in cooperation with a power company. Areas off the SW-coast were resurveyed. Additionally some contract work for the harbour authorities in Reykjavík was carried out.



Survey in Eyjafjörður on the north coast and on either side of Reykjanes on the SW-coast.

3. New charts & updates

Printed charts

Seven New Editions have been published since last NHC meeting, four A3 size harbour plans and three standard nautical charts. One chart was reprinted. See the following table.

National No.	Title	Scale	Pub. month
44	Norðurflói – Breiðafjörður	1:75 000	05/2016*
613	Vopnafjörður	1:10 000	09/2016
36	Selvogur - Hjörsey INT 1112	1:100 000	10/2016
522	Siglufjörður	1:10 000	10/2016
534	Húsavík	1:10 000	11/2016
31	Dyrhólaey - Snæfellsnes INT 1103	1:300 000	01/2017
530	Akureyri INT 1118	1:10 000	01/2017
417	Ísafjörður	1:10 000	02/2017

* Det Kongelige Søkort-Arkiv, Copenhagen, originally published the chart No. 44 in 1915.

ENC production

Sixteen new editions and 13 updates were made on the 71 ENC Cell's produced in Iceland 2016.



Plans for 2017

New Editions (NE) and New Charts (NC) planned for 2017 are:

National no.	Title	Scale	Pub. month
531	Grenivík	1:10 000	Q2 2017 NC *
536	Kópasker	1:10 000	Q2 2017 NC *
710	Borgarfjörður Eystri	1:10 000	Q2 2017 NC *
517	Blönduós	1:10 000	Q2 2017 NC *
362	Reykjavík INT 1113	1:10 000	Q2 2017 NE
21	Ísland INT 1010	1:1000 000	Q2 2017 NE
73	Glettinganes – Hlaða INT 1111	1:100 000	Q3 2017 NE
45	Tálkni - Stigahlíð	1:100 000	Q4 2017 NC
363	Hafnarfjörður	1:10 000	Q4 2017 NE
32	Alviðruhamrar - Vestmannaeyjar	1:100 000	Q4 2017 NE
35	Fuglasker	1:100 000	Q4 2017 NE

* Harbour plans, size A3, POD.

4. Nautical Publications

The annual nautical publications, *Tide Tables 2017* and *Tide Almanac 2017*, were published in the fall of 2016. Five issues of *Notices to Mariners* were published in 2016, 18 NMs in total. The pdf-publications, *List of Lights* and *Catalogue of charts* were updated and are available at www.lhg.is.

5. C-55

No changes.

6. Capacity Building

Iceland is not involved in any CB work.

7. Other activities.

Two members of HD staff have been working as National Officials, on behalf of the Coast Guard in Frontex EU Border control, in the Mediterranean.

This report highlights the main activities of the Icelandic Coast Guard, Hydrographic Department since the last meeting.