



Kartverket

The Norwegian Pilot guide – Sailing directions

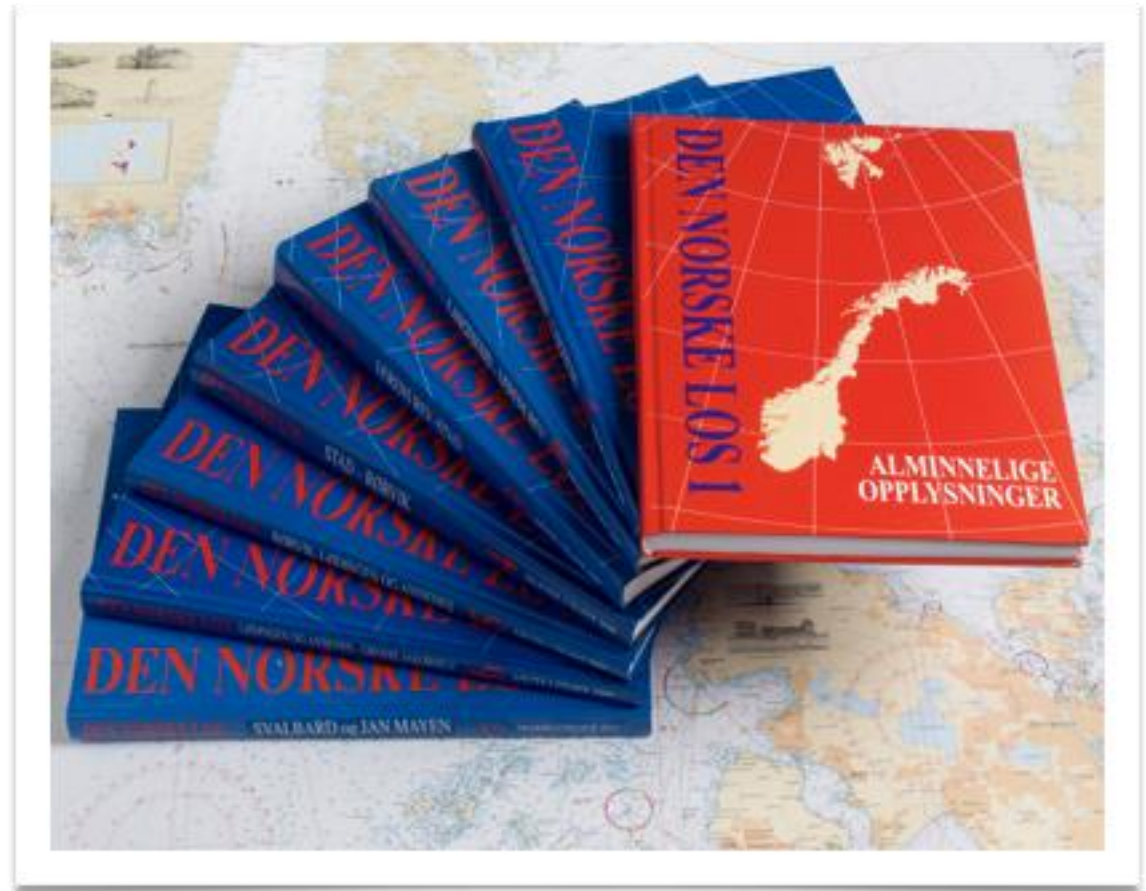
April 2018



Den norske los

The publication contains supplemental information beyond what is displayed on the charts, serves as reference material and is an important tool for use before, during and after sailing.

The first sailing directions were published in 1791.



Digitalization Objectives

The Norwegian Pilot Guide



More efficient update and distribution routines.

Increased use of Norwegian Pilot guide among skippers and navigators.

The Norwegian Pilot guide becomes a desired medium for all (navigators and others) who need information about ports, fairways and sailing directions.

Simplified delivery model to provide new content.

More updated content for the users.

The solution should be able to replace current books.

Relevant content

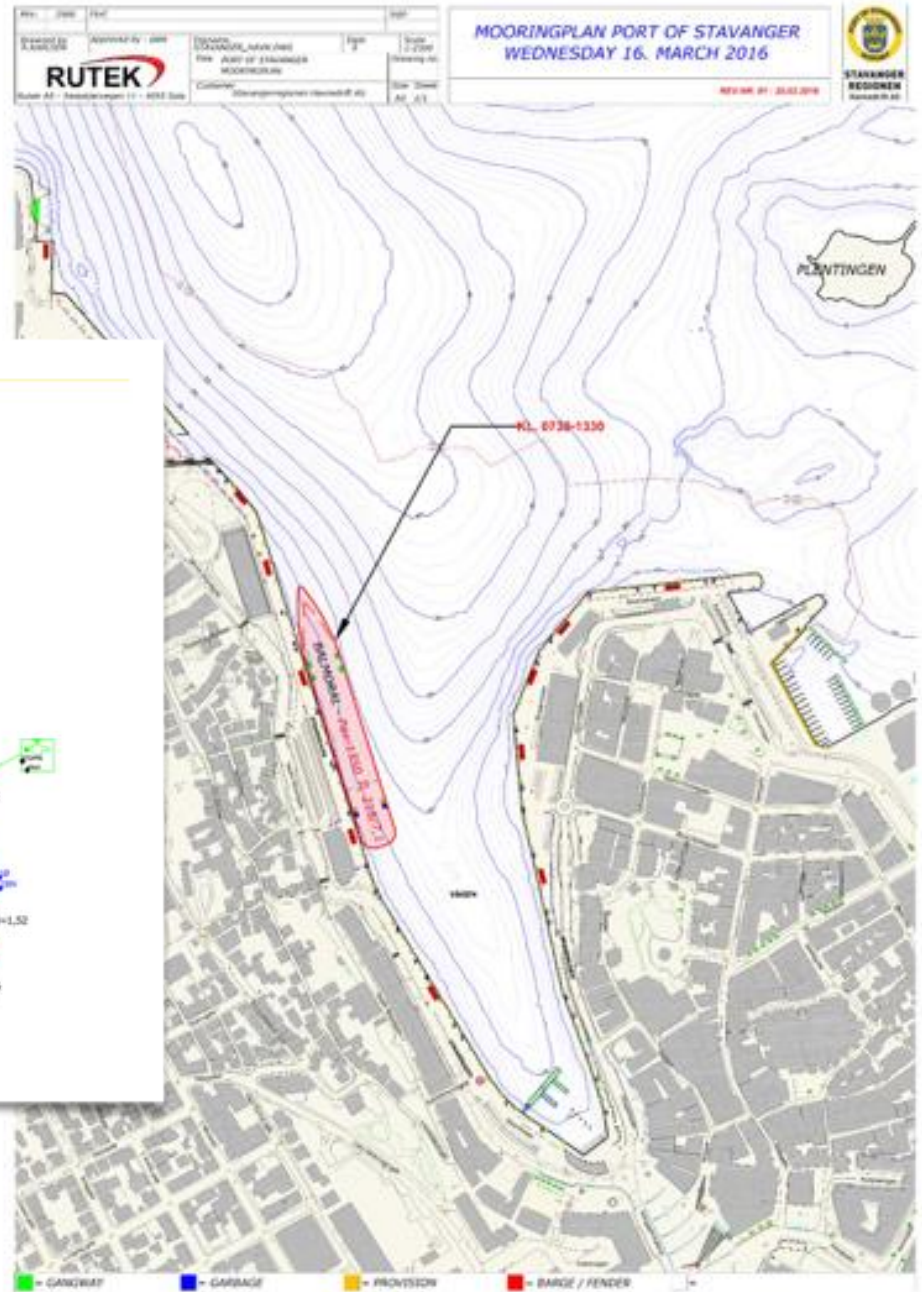


Port information

- Anchoring
- Fuel
- Mooring
- Port regulations
- Power and water
- Contact information
- Sailing-information
- Visitor wharf
- Fishing port



Stavanger



Stavanger Harbor AutoCAD

Kristiansand

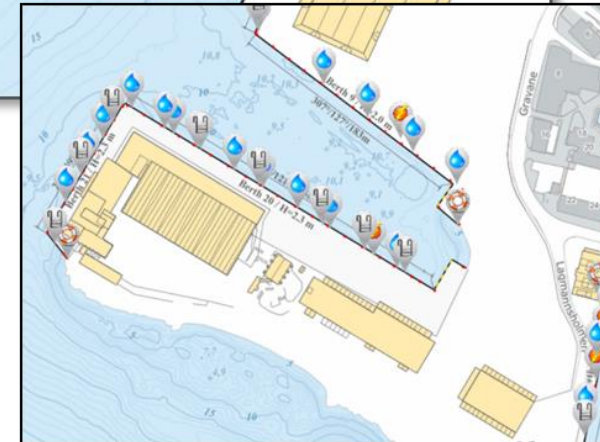
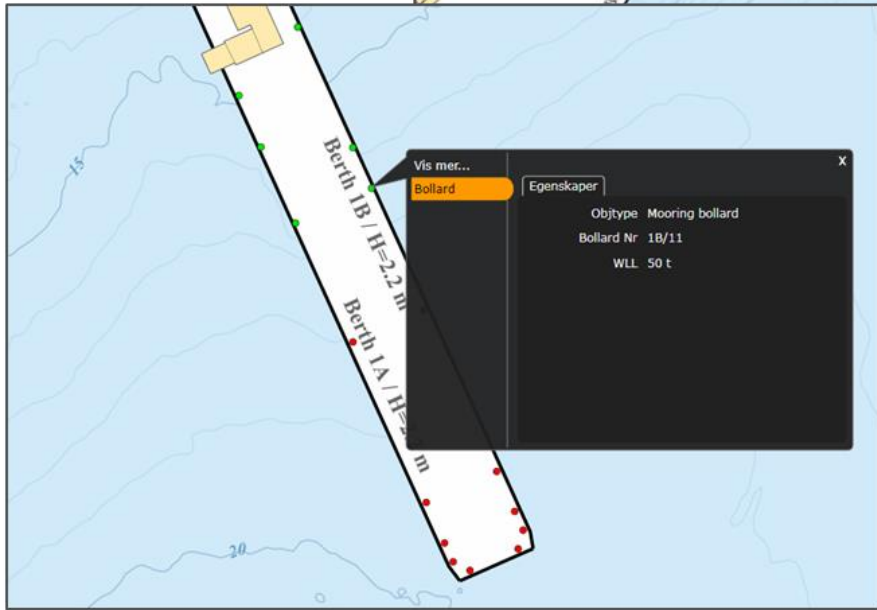
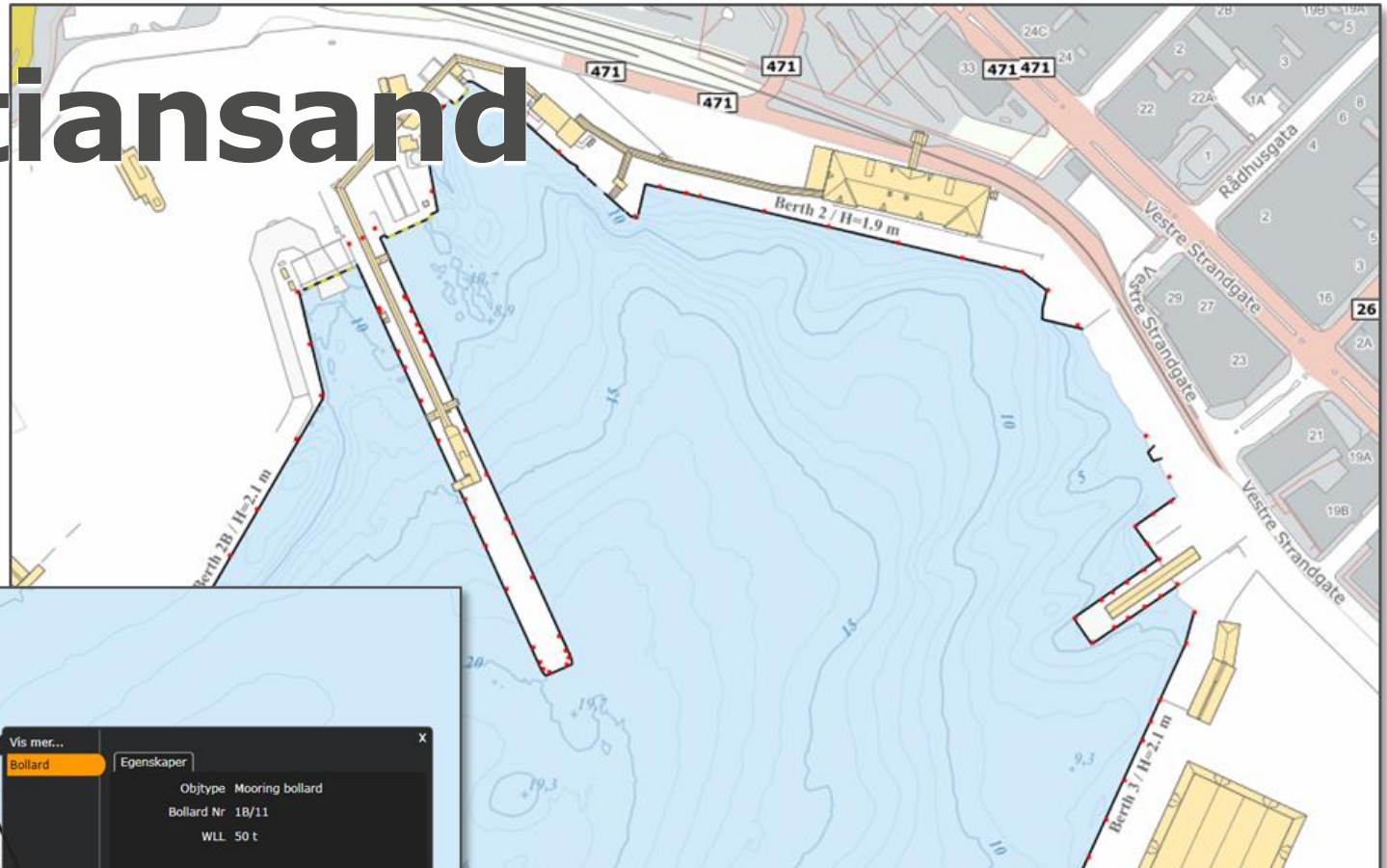
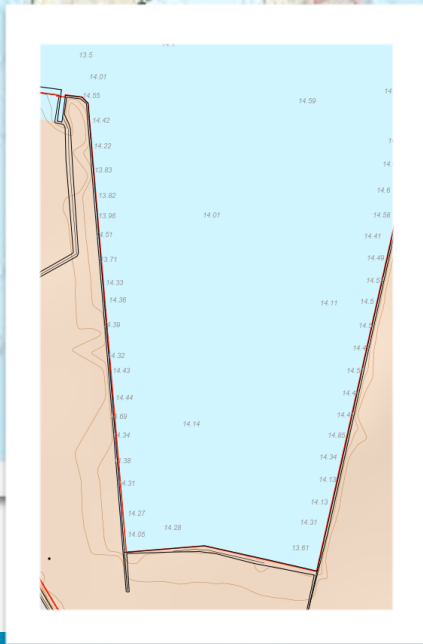
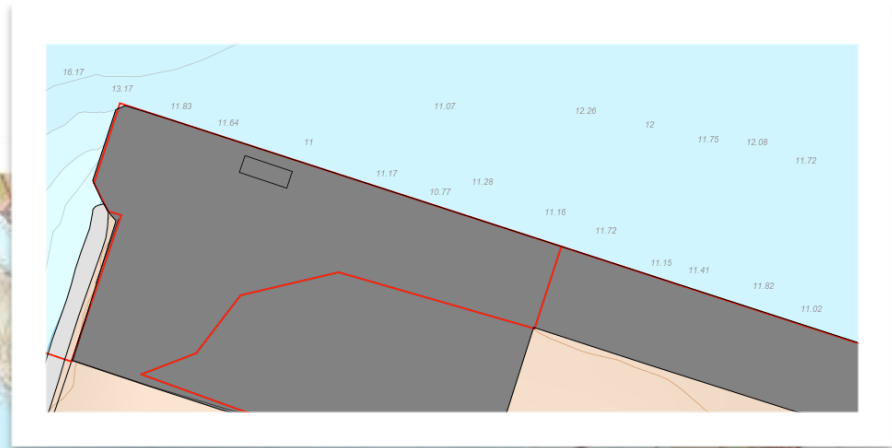
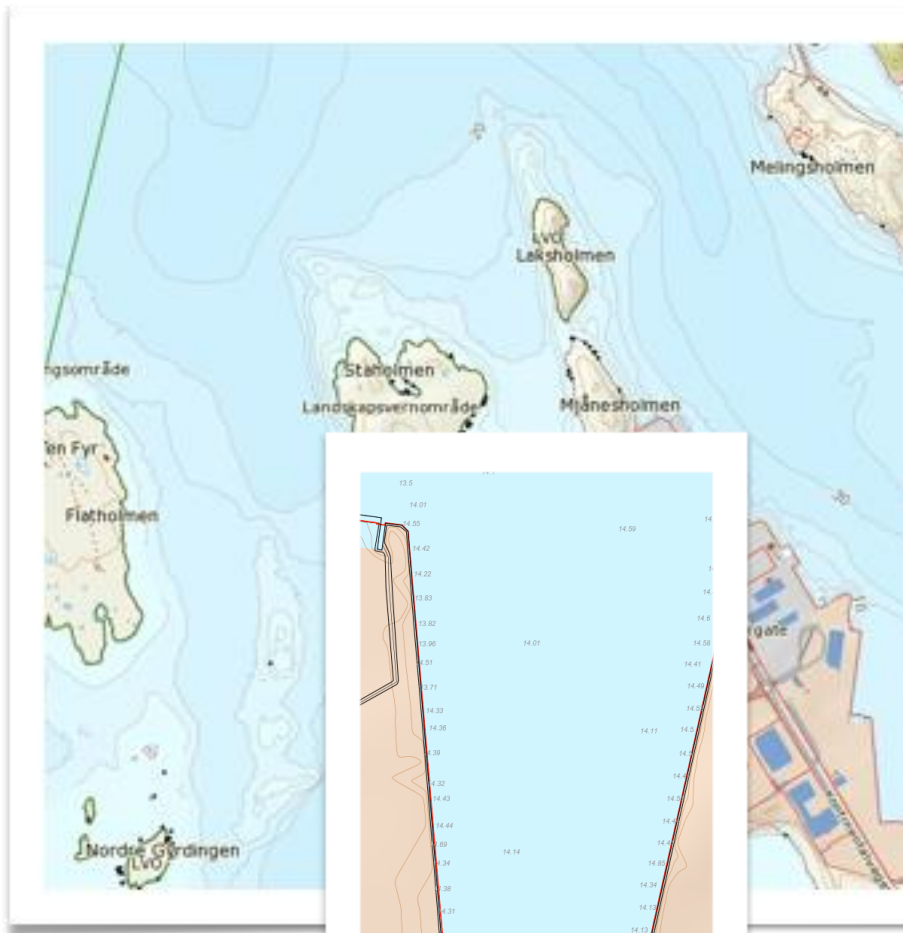


Chart information

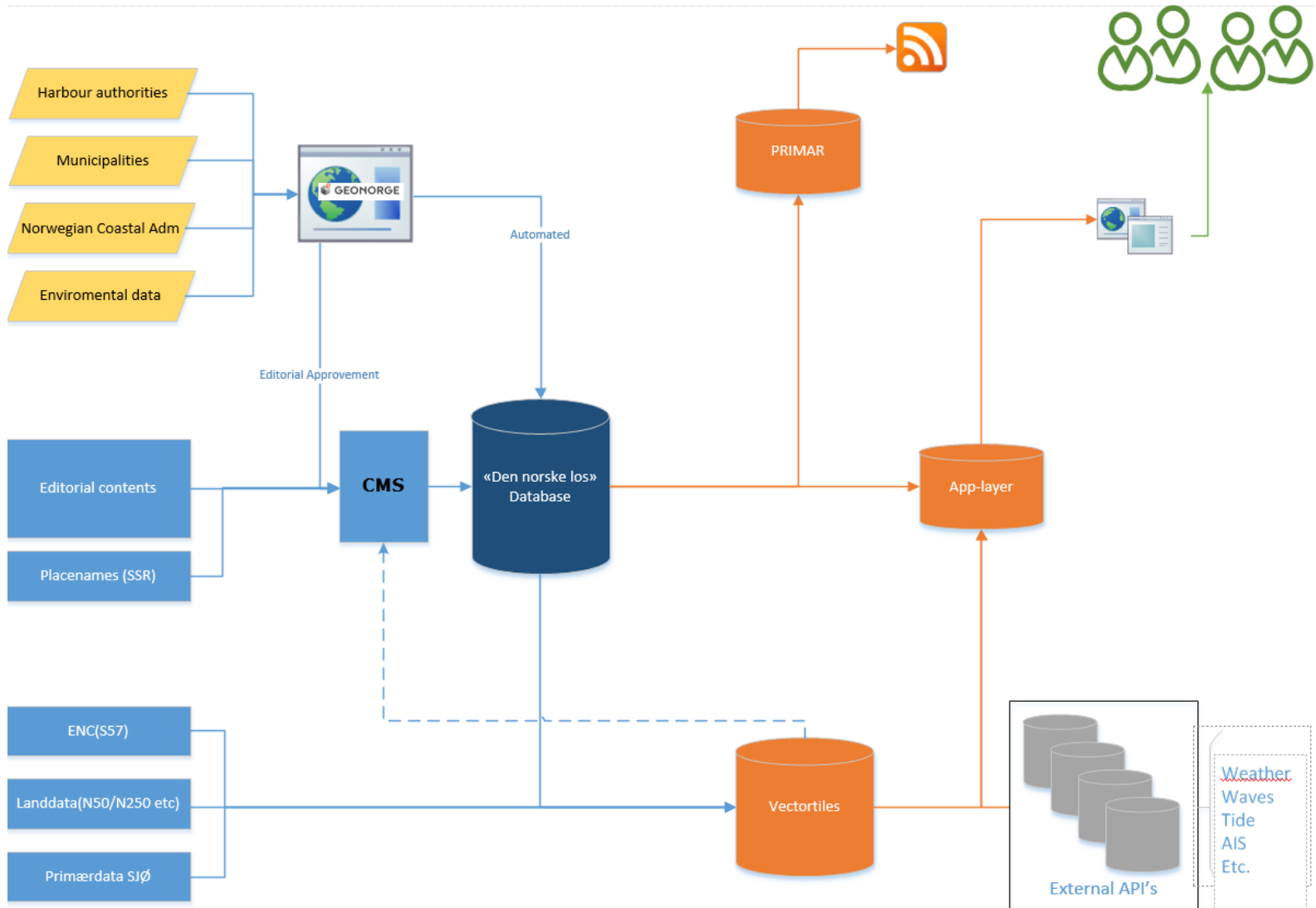


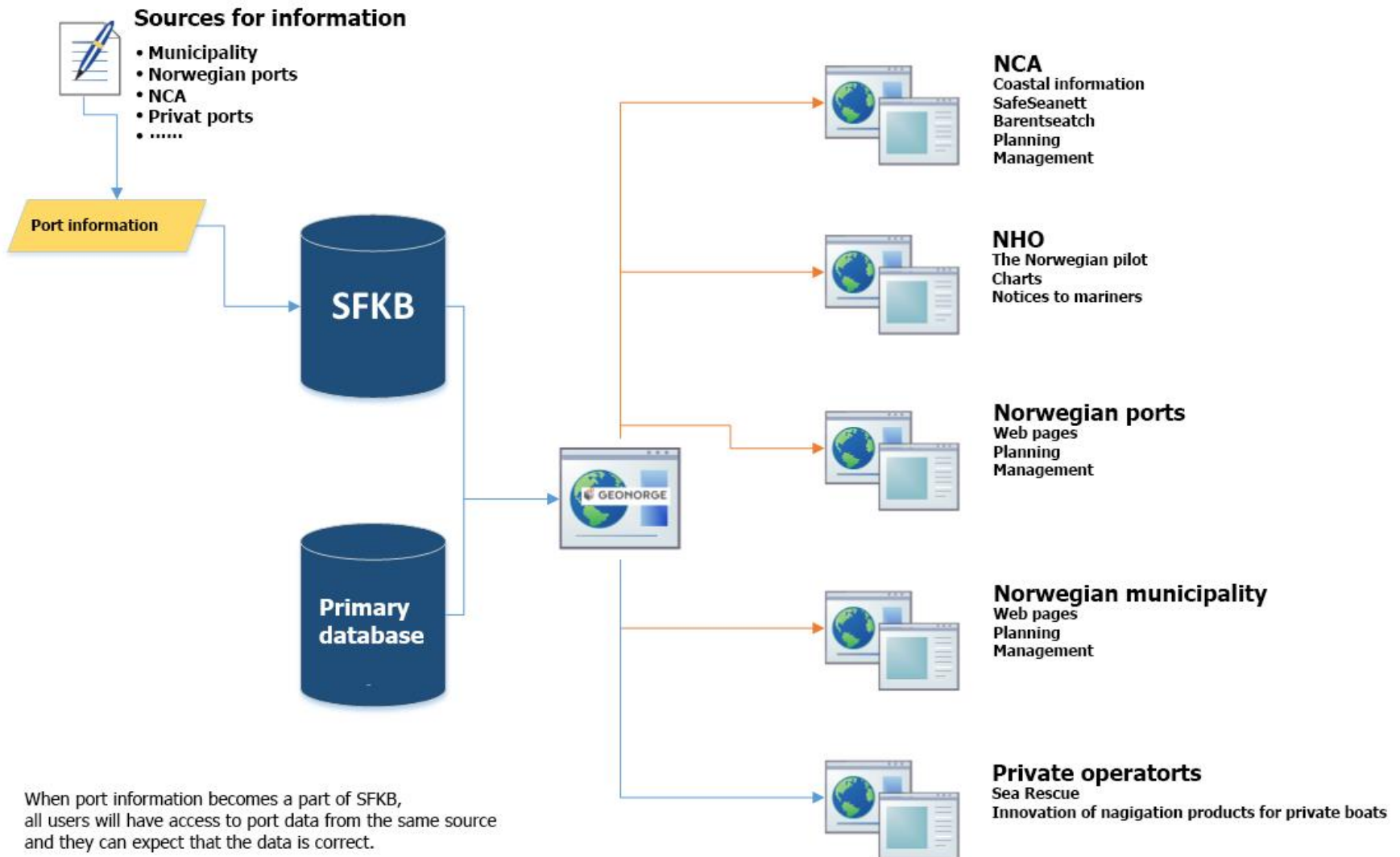
Services from the Coastal Administration



- Fairways
- Pilot services
- Speed limit regulations
- AIS
- Ports
- Port of refuge
- Aids to navigation
- Regulations
- Coastal weather
- Wave warnings
- Coastal information

Dataflow





When port information becomes a part of SFKB, all users will have access to port data from the same source and they can expect that the data is correct.

The examples that are submitted are probably only some of them.

With this approach, all government agencies will retrieve data from the same source..

Tide

I dag, 06. juni 2016

Høy/lav	Tid	Beregnet tidevann
↓	kl. 05:50	24 cm
↑	kl. 12:04	86 cm
↓	kl. 18:09	25 cm

I morgen, 07. juni 2016

Høy/lav	Tid	Beregnet tidevann
↑	kl. 00:27	86 cm
↓	kl. 06:35	24 cm
↑	kl. 12:51	85 cm
↓	kl. 18:52	27 cm

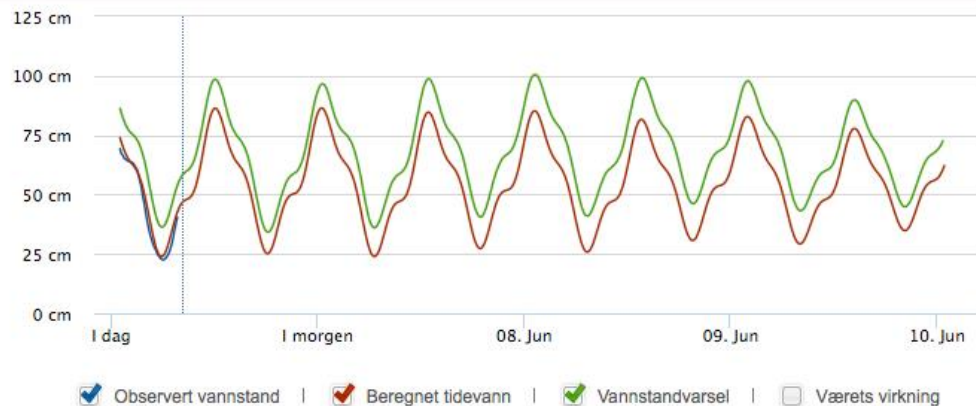
Onsdag, 08. juni 2016

Høy/lav	Tid	Beregnet tidevann
↑	kl. 01:12	85 cm
↓	kl. 07:19	26 cm

Torsdag, 09. juni 2016

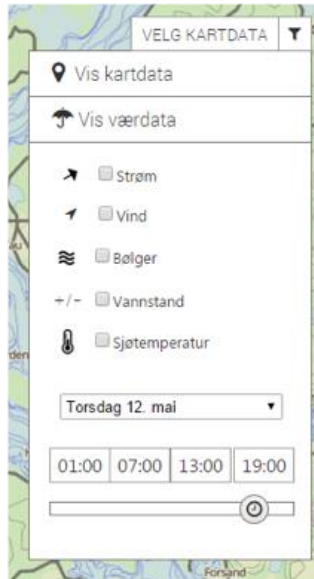
Høy/lav	Tid	Beregnet tidevann
↑	kl. 01:57	83 cm
↓	kl. 08:03	29 cm
↑	kl. 14:23	78 cm
↓	kl. 20:15	35 cm

Neste 4 dager



Tidevannsstrømmer oppstår som følge av høydeforskjellen mellom flo og fjære, og lokalt kan strømmene bli svært sterke.

Weather and wind

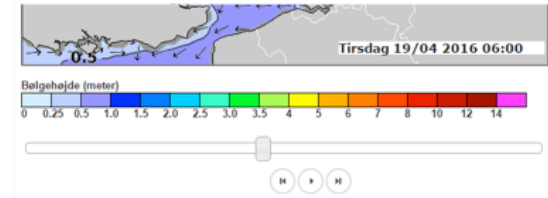


I dag, mandag 06.06.2016

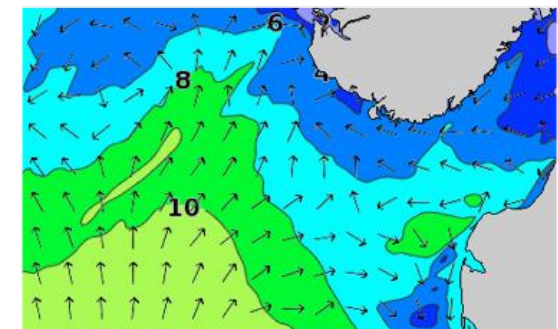
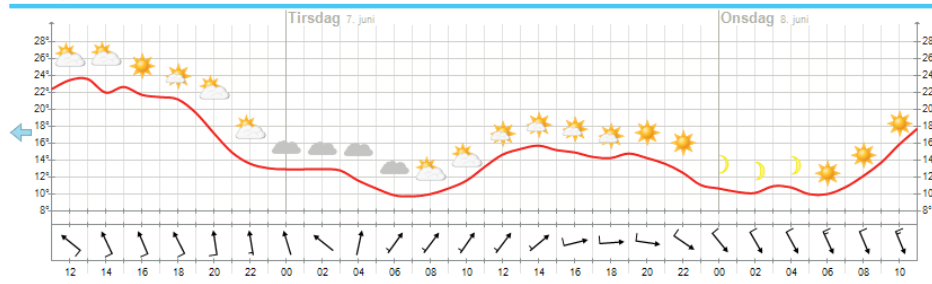
Tid	Varsel	Temp.	Nedbør	Vind
kl 11–12		21°	0 mm	Svak vind, 2 m/s fra vest-nordvest
kl 12–18		20°	0 mm	Svak vind, 3 m/s fra vest-nordvest
kl 18–24		20°	0 mm	Flau vind, 2 m/s fra nordvest

I morgen, tirsdag 07.06.2016

Tid	Varsel	Temp.	Nedbør	Vind
kl 0–6		14°	0 – 0,1 mm	Svak vind, 2 m/s fra sørvest



Meteogram, neste 48 timer



Symbols and abbreviations in Norwegian charts



