

Number	Name	Scale
13003	Cape Sable to Cape Hatteras	1:1,200,000
13006	West Quoddy Head to New York	1:675,000
13009	Gulf of Maine and Georges Bank	1:500,000
13260	Bay of Fundy to Cape Cod	1:378,838

- Joint
- Undecided
- SAC (Canadian)
- SAC (US)

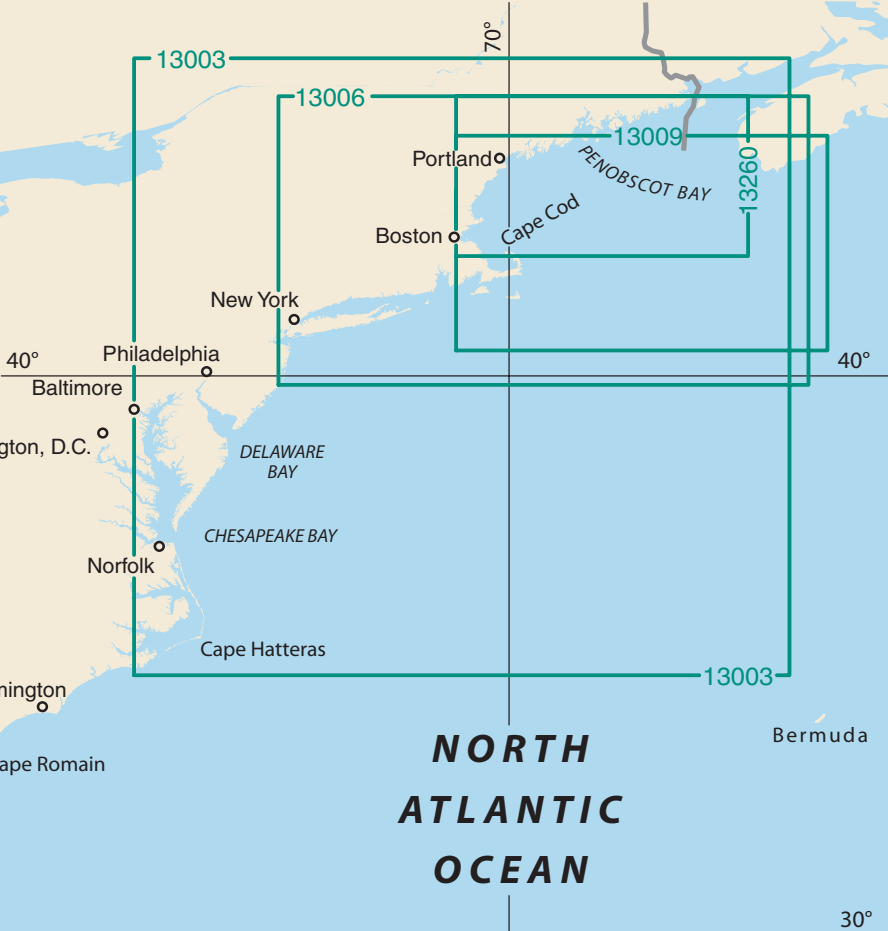
C A N A D A

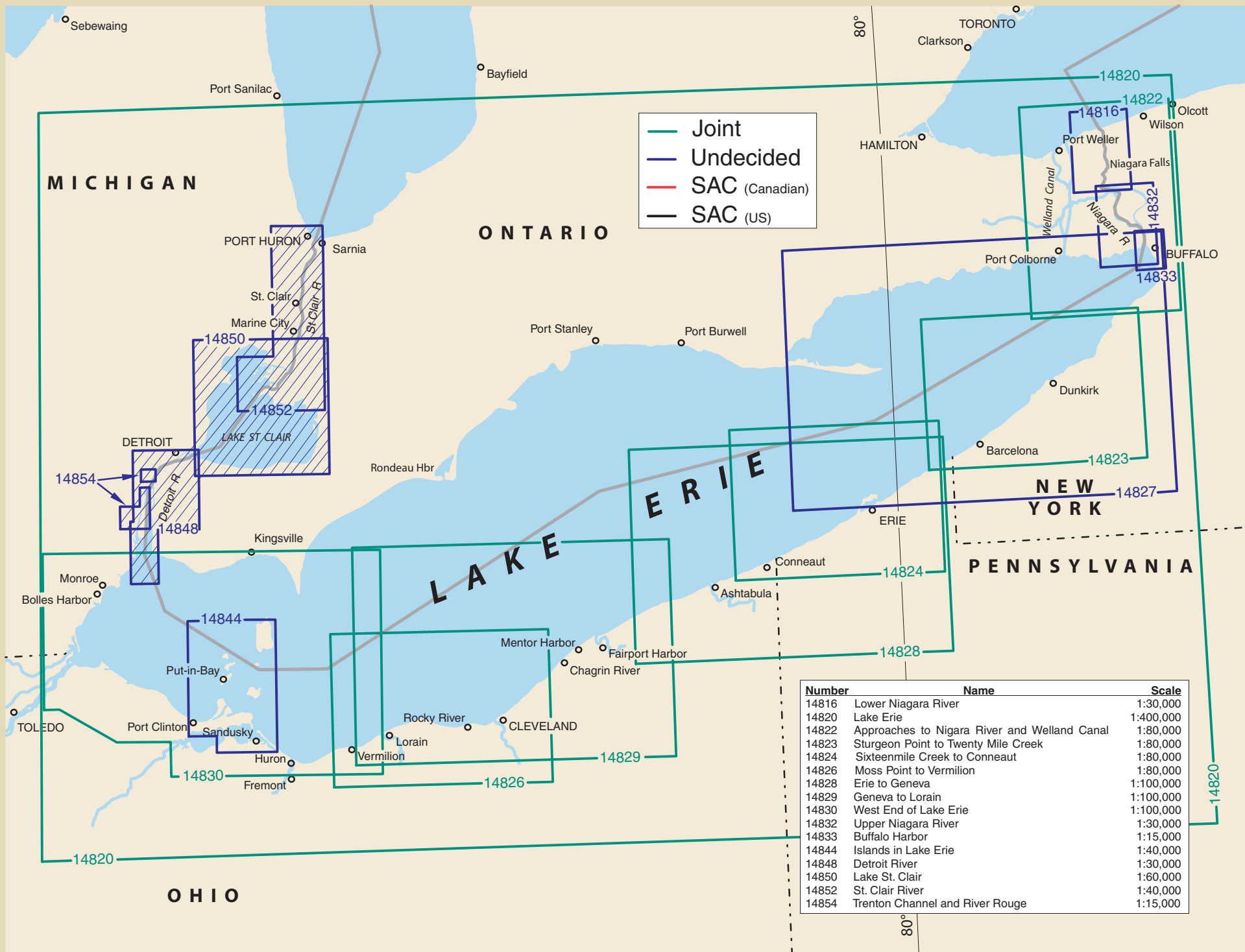
U N I T E D
S T A T E S

N O R T H
A T L A N T I C
O C E A N

G U L F O F
M E X I C O

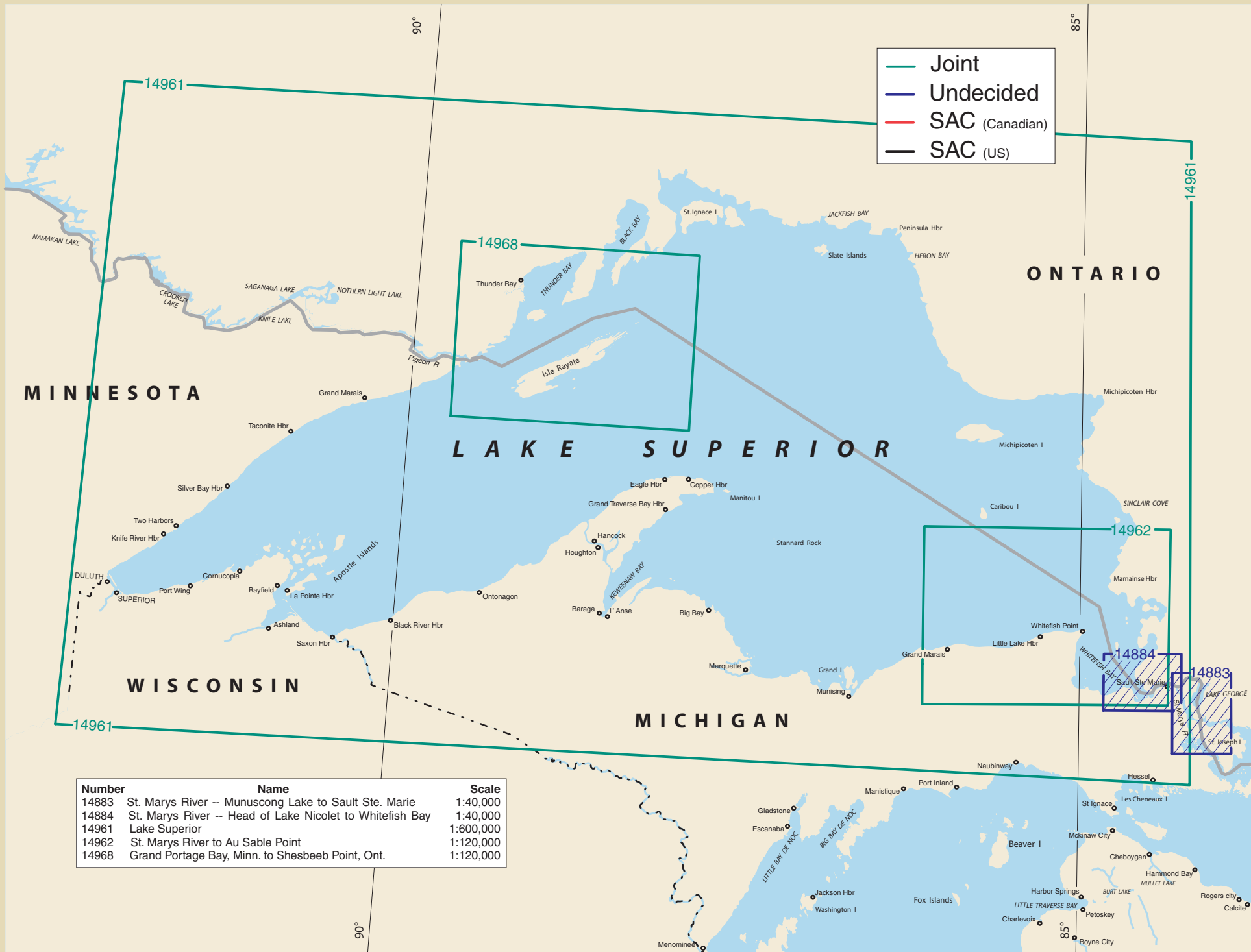
B A H A M A S





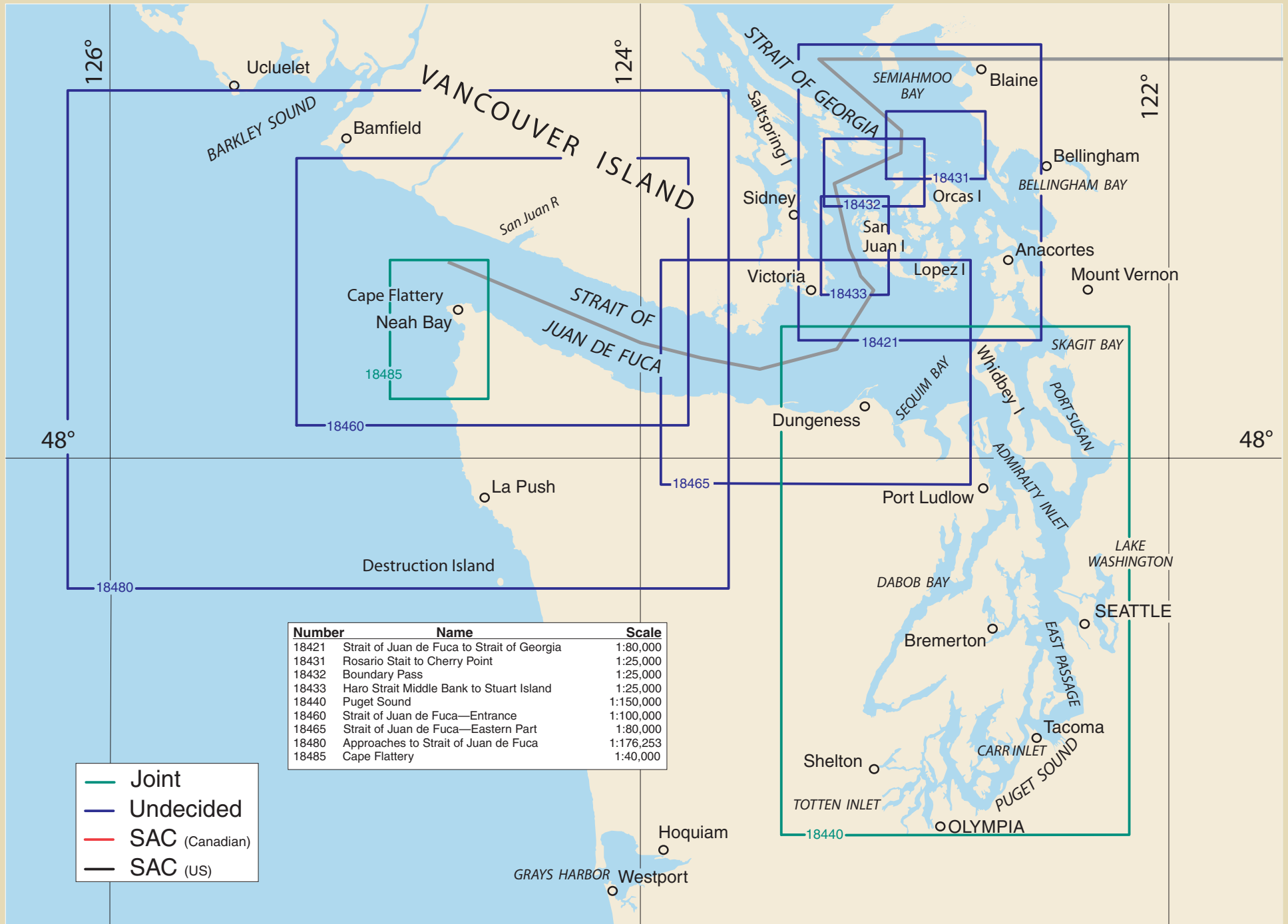
— Joint
— Undecided
— SAC (Canadian)
— SAC (US)

Number	Name	Scale
14816	Lower Niagara River	1:30,000
14820	Lake Erie	1:400,000
14822	Approaches to Niagara River and Welland Canal	1:80,000
14823	Sturgeon Point to Twenty Mile Creek	1:80,000
14824	Sixteenmile Creek to Conneaut	1:80,000
14826	Moss Point to Vermillion	1:80,000
14828	Erie to Geneva	1:100,000
14829	Geneva to Lorain	1:100,000
14830	West End of Lake Erie	1:100,000
14832	Upper Niagara River	1:30,000
14833	Buffalo Harbor	1:15,000
14844	Islands in Lake Erie	1:40,000
14848	Detroit River	1:30,000
14850	Lake St. Clair	1:60,000
14852	St. Clair River	1:40,000
14854	Trenton Channel and River Rouge	1:15,000



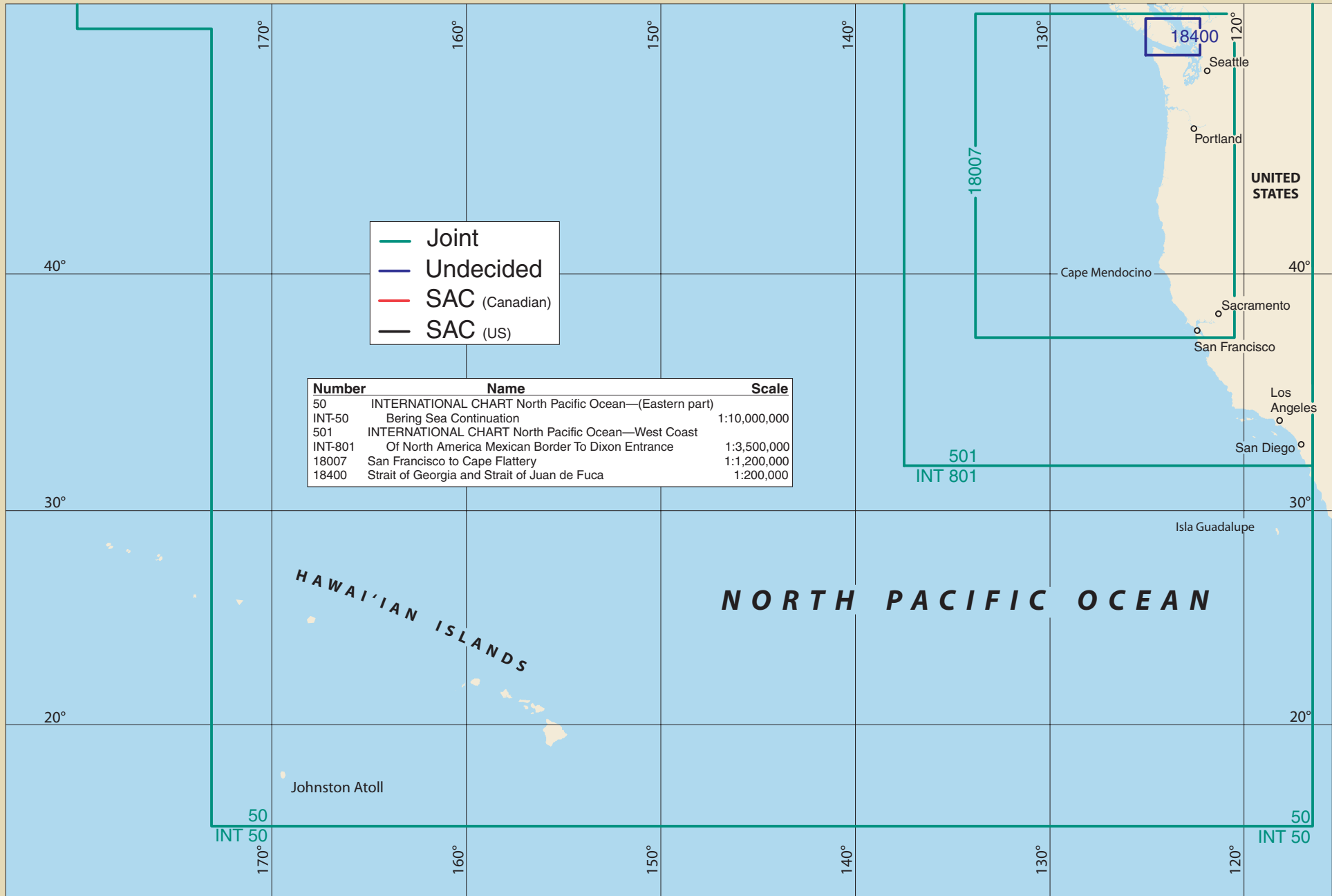
- Joint
- Undecided
- SAC (Canadian)
- SAC (US)

Number	Name	Scale
14883	St. Marys River -- Munuscong Lake to Sault Ste. Marie	1:40,000
14884	St. Marys River -- Head of Lake Nicolet to Whitefish Bay	1:40,000
14961	Lake Superior	1:600,000
14962	St. Marys River to Au Sable Point	1:120,000
14968	Grand Portage Bay, Minn. to Shesbeeb Point, Ont.	1:120,000



Number	Name	Scale
18421	Strait of Juan de Fuca to Strait of Georgia	1:80,000
18431	Rosario Strait to Cherry Point	1:25,000
18432	Boundary Pass	1:25,000
18433	Haro Strait Middle Bank to Stuart Island	1:25,000
18440	Puget Sound	1:150,000
18460	Strait of Juan de Fuca—Entrance	1:100,000
18465	Strait of Juan de Fuca—Eastern Part	1:80,000
18480	Approaches to Strait of Juan de Fuca	1:176,253
18485	Cape Flattery	1:40,000

- Joint
- Undecided
- SAC (Canadian)
- SAC (US)



HAWAIIAN ISLANDS

NORTH PACIFIC OCEAN

UNITED STATES

18400

501
INT 801

50
INT 50

50
INT 50

Johnston Atoll

Isla Guadalupe

Cape Mendocino

Seattle

Portland

Sacramento

San Francisco

Los Angeles

San Diego

40°

40°

30°

30°

20°

20°

170°

160°

150°

140°

130°

120°

170°

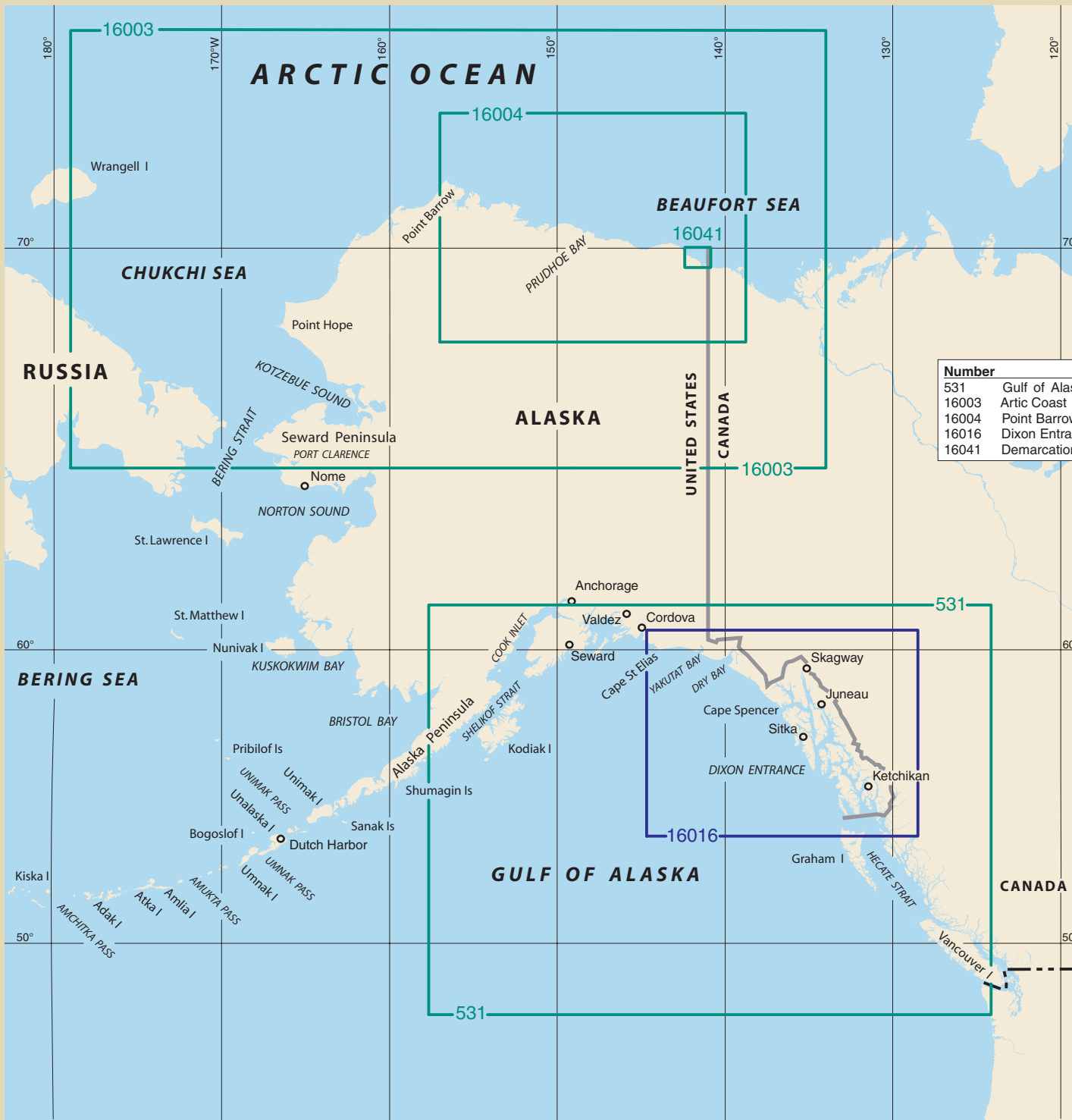
160°

150°

140°

130°

120°



Number	Name	Scale
531	Gulf of Alaska-Strait of Juan de Fuca to Kodiak Island	1:2,100,000
16003	Arctic Coast	1:1,587,870
16004	Point Barrow to Herschel Island	1:700,000
16016	Dixon Entrance to Cape St. Elias	1:969,756
16041	Demarcation Bay and Approaches	1:51,639

—	Joint
—	Undecided
—	SAC (Canadian)
—	SAC (US)

170°W