

# Future Concept of Special overlay for Navigational Information

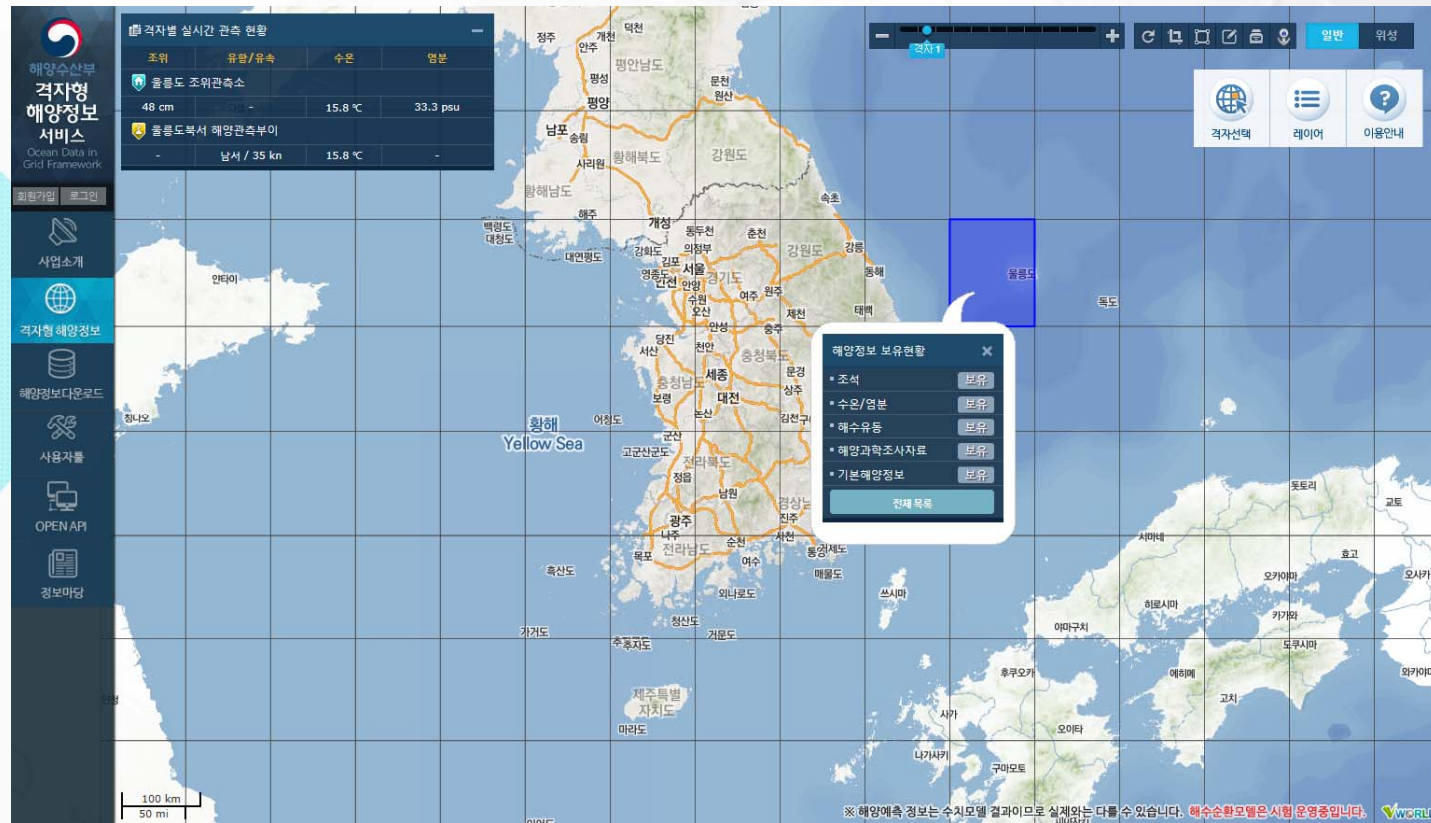
---

May 2017



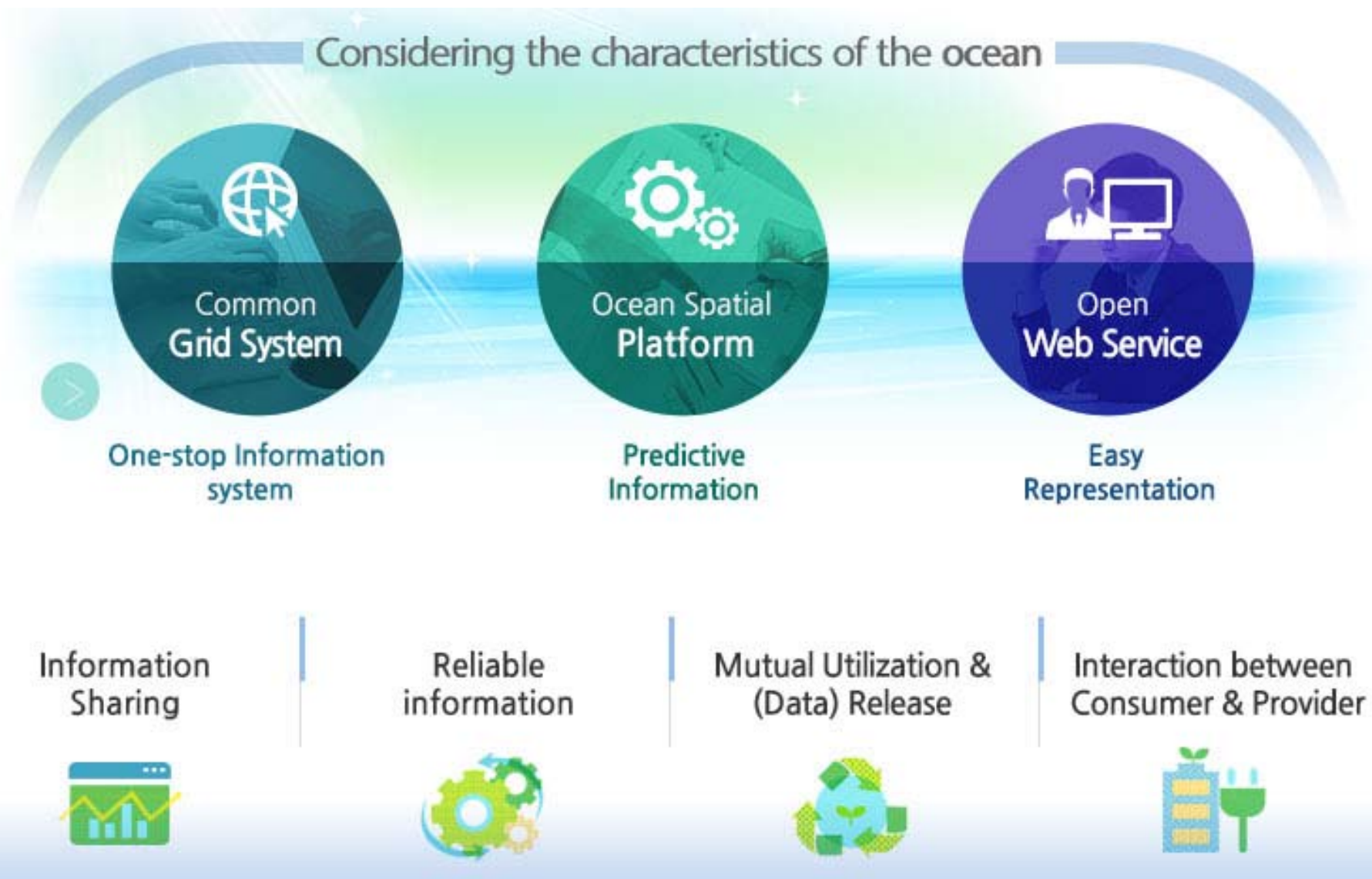


# Ocean Data in Grid Framework

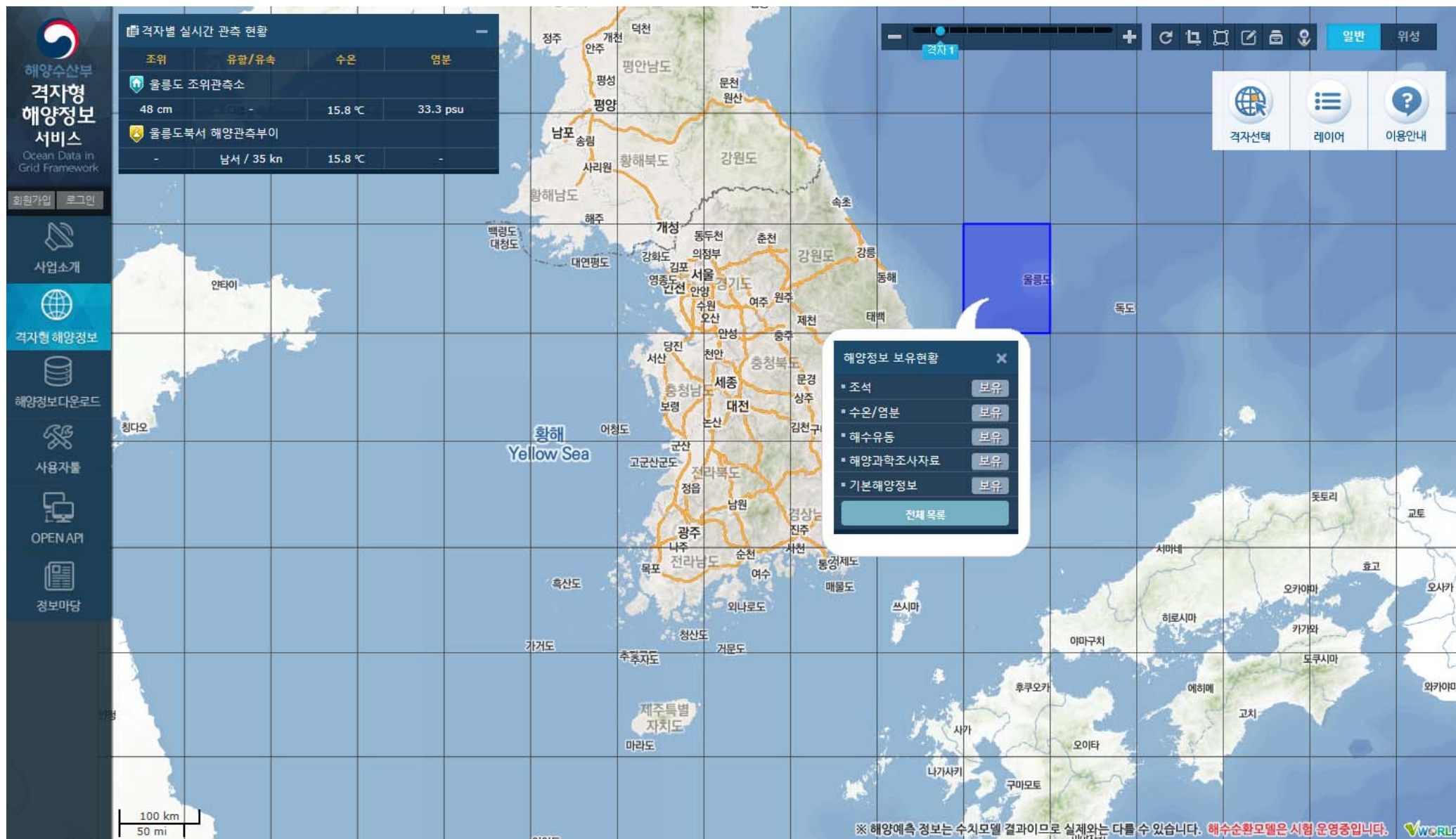


# Background & Concept

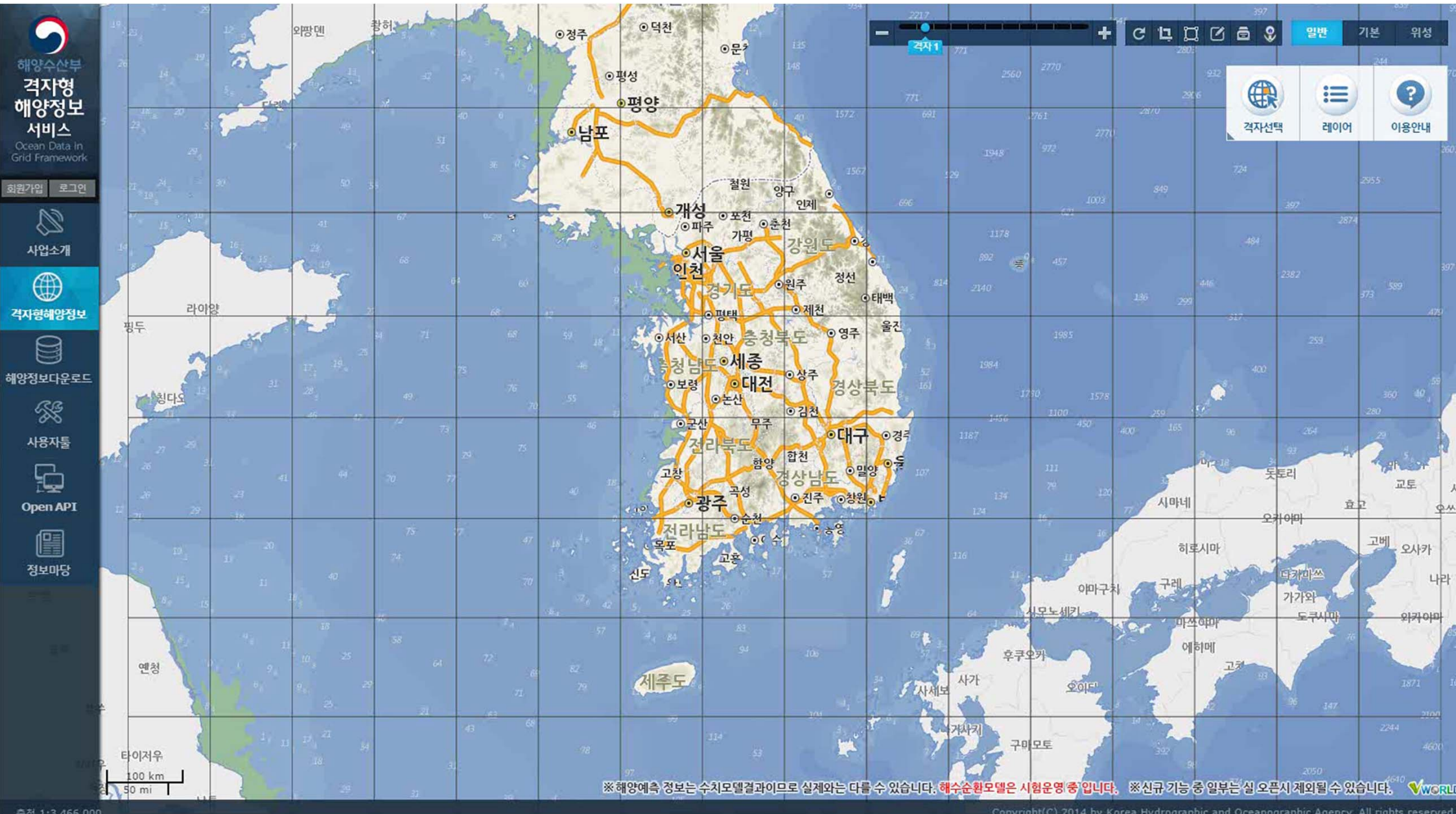
“ The Grid is Place of Ocean Data Openness, Sharing & Exchange ”



# Background & Concept



# Demonstration Video of Ocean Data in Grid Framework

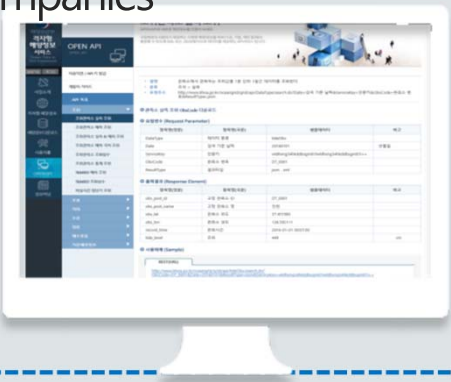


# Opening Method of Marine Information for Users

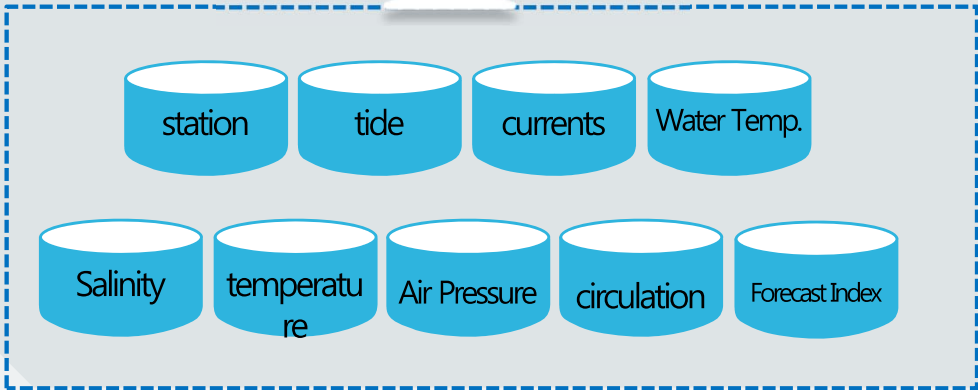
“Marine Information & Analysis Function Provided through OPEN API and User Tool”

## Open API

- ✓ Total of 23 types such as the tide, tidal current, and seawater flow, etc. are provided through API
- ✓ Currently actively used by public institutions & private companies



Total of 33 types of OPEN API



## User Tool

- ✓ Analysis tool is provided to enable the tidal observation data acquired by the user to be processed



# BadaRoadView 'Baroview'



**바다로드뷰** 부산항 | 부산조위관측소 | 2016.12.02 | 17:48 | 37cm | 조위 31cm~60cm | 공유 | 도움말 | 국립해양조사원

촬영일자 : 2015년 06월

오늘의 조석예보

03:16	저	14 cm
09:52	고	118 cm
15:56	저	16 cm
21:58	고	107 cm

[해관] 기상청  
10°C 맑음 0.75m

해양정보 전체보기

376m

조류정보는 수치예측모델 결과로 실제와는 차이가 발생할 수 있습니다.

# What is 'BaRoView'?

**BaRoView**

BaRoView converges the information on the marine forecast and real-time marine observation to be provided on the spatial information. The landscape around the course that changes according to the tide time can be seen through the panoramic image.

Landscape of the land seen from the ocean

**BaRoView**

**Information Provided**

- Tidal current
- Weather
- Real-time tide level
- Tide level forecast

**Introduction of Main Functions**

- Navigation
- Safety
- Tourism
- Disaster
- Leisure

**Panorama**  
360° panoramic image display

**Automatic navigation**  
Surrounding image displayed automatically according to the course/harbor limit

**Accident details inquiry**  
Information on the history of accidents around the course/harbor limit displayed

**국립해양조사원 KHOA**  
Korea Hydrographic and Oceanographic Agency

Weather information

Tide level information

Tidal current information

High tide

Low tide

Tide level change in the mud flat

Tide level change in the breakwater

360° panorama

Accident history

Surrounding landscape

**Example of Incheon Port**

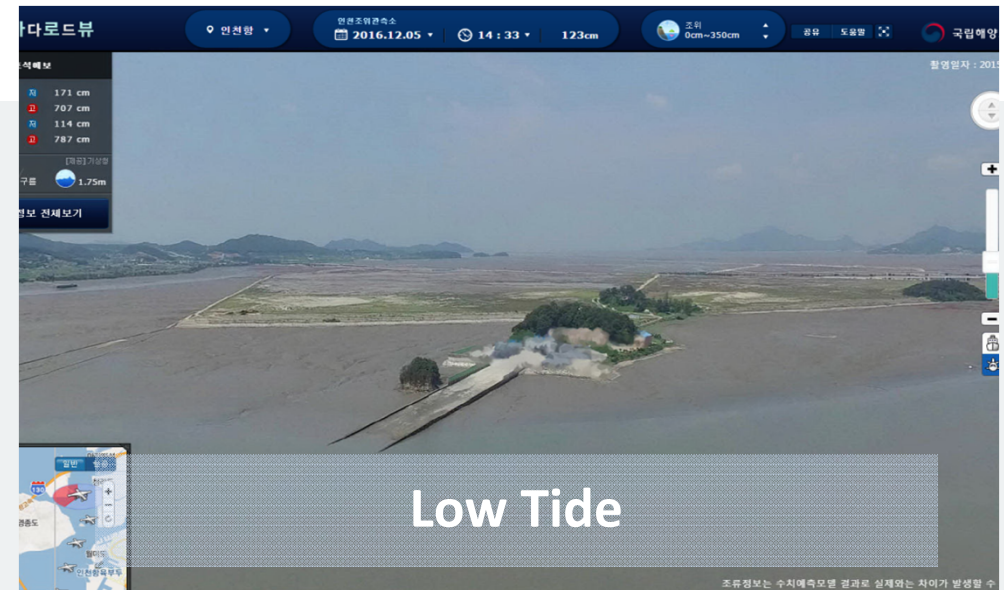
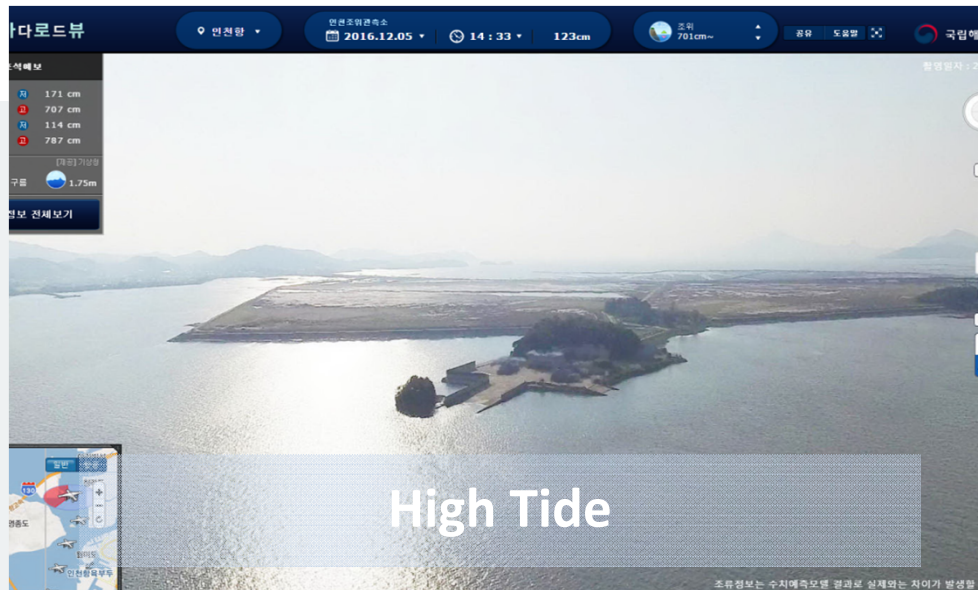
영종도, 섬진군, 철리도, 인천항, 부평도, 빛이머리항



Select a specific time



The panorama estimating the tide level of that time is shown with the marine information.



### Menu

- 360 degrees panoramic image service
- Today's tide & weather

- Real-time marine observation information provided
- Auto-navigation, drone-view

### Service area

- Incheon Port, Busan Port
- 360 degrees panorama service on the course & harbor limit according to the tide level change
- Aerial image for verifying the tidal channel according to the tide level change

### Type for each POI subjects

- Information on the accident history
- Tidal current information

- Specific geographic features

# Demonstration Video of BaRoView

바다로드뷰

부산항
부산조위관측소
2016.11.30
16:29
30cm

조위
0cm~30cm

공유
도움말
국립해양조사원

**오늘의 조석예보**

02:14	저	13 cm
08:50	고	119 cm
14:51	저	13 cm
20:49	고	111 cm

[재공] 기상청

13°C

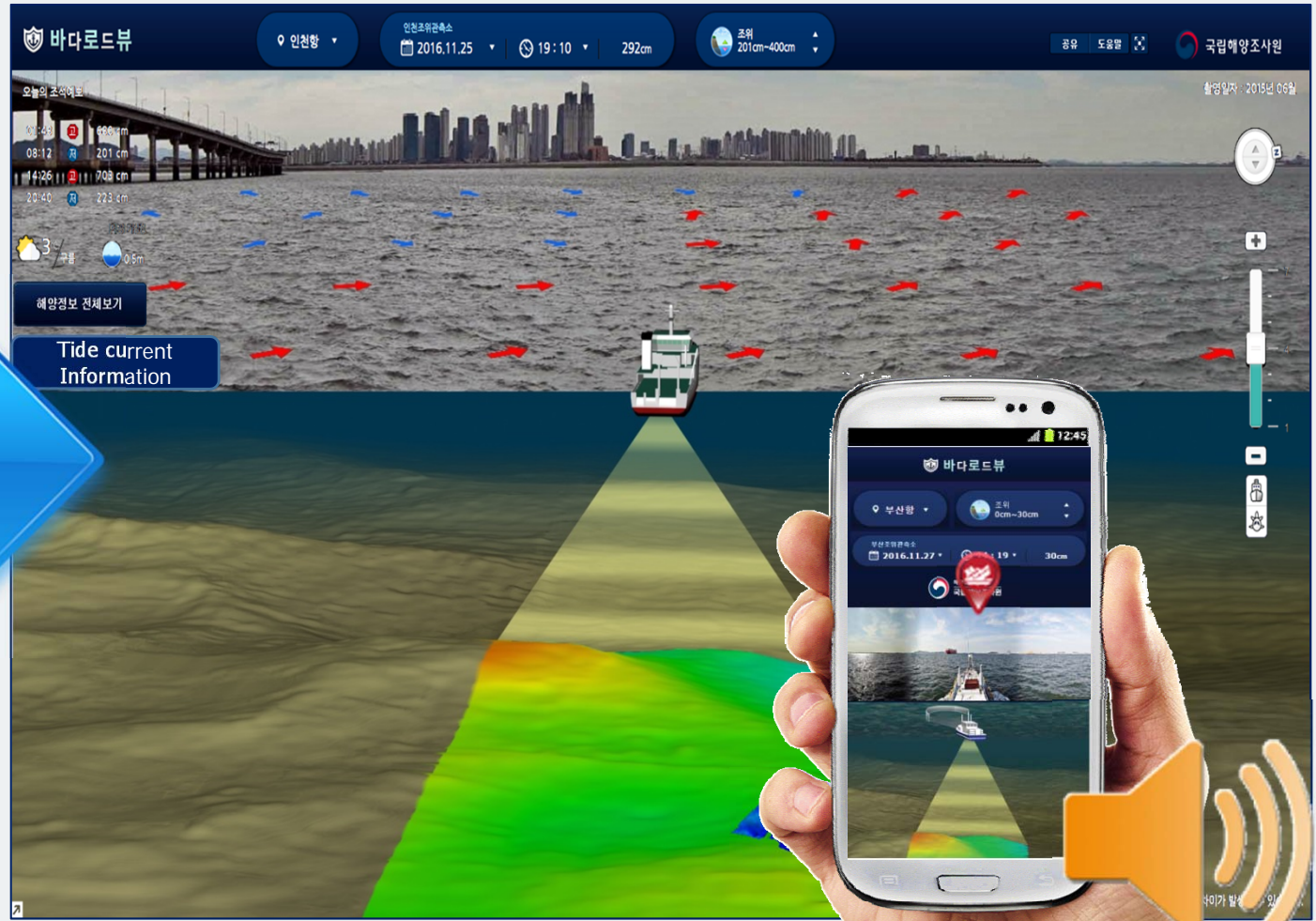
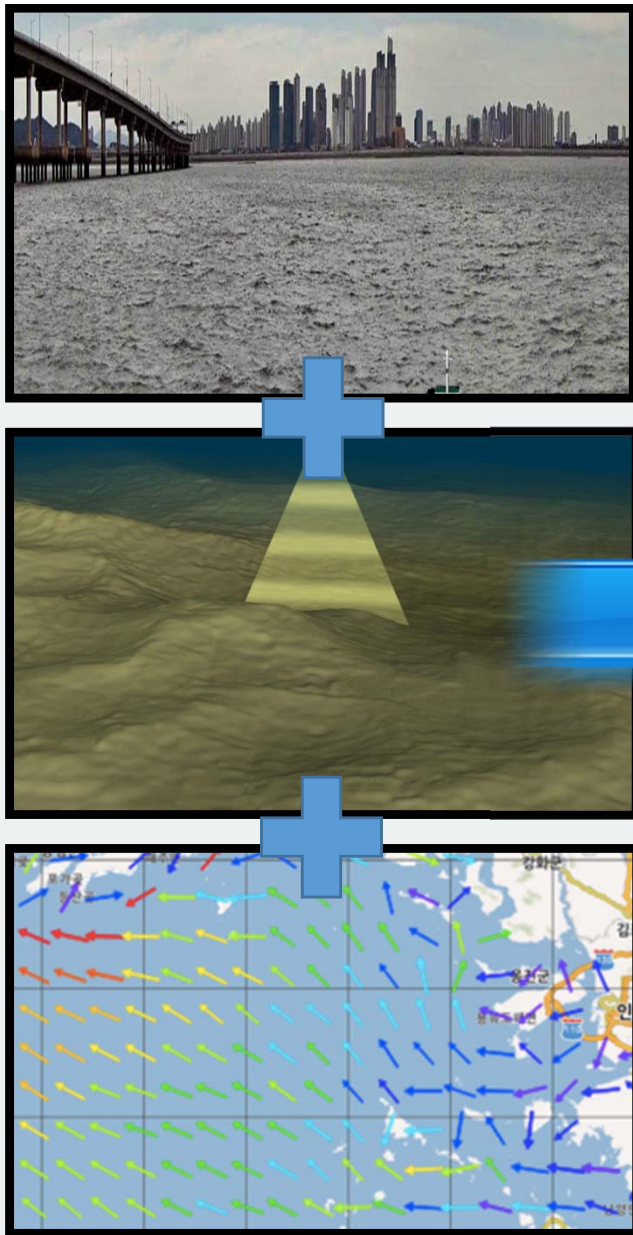
흐림 1m

해양정보 전체보기

촬영일자 : 2015년 09월

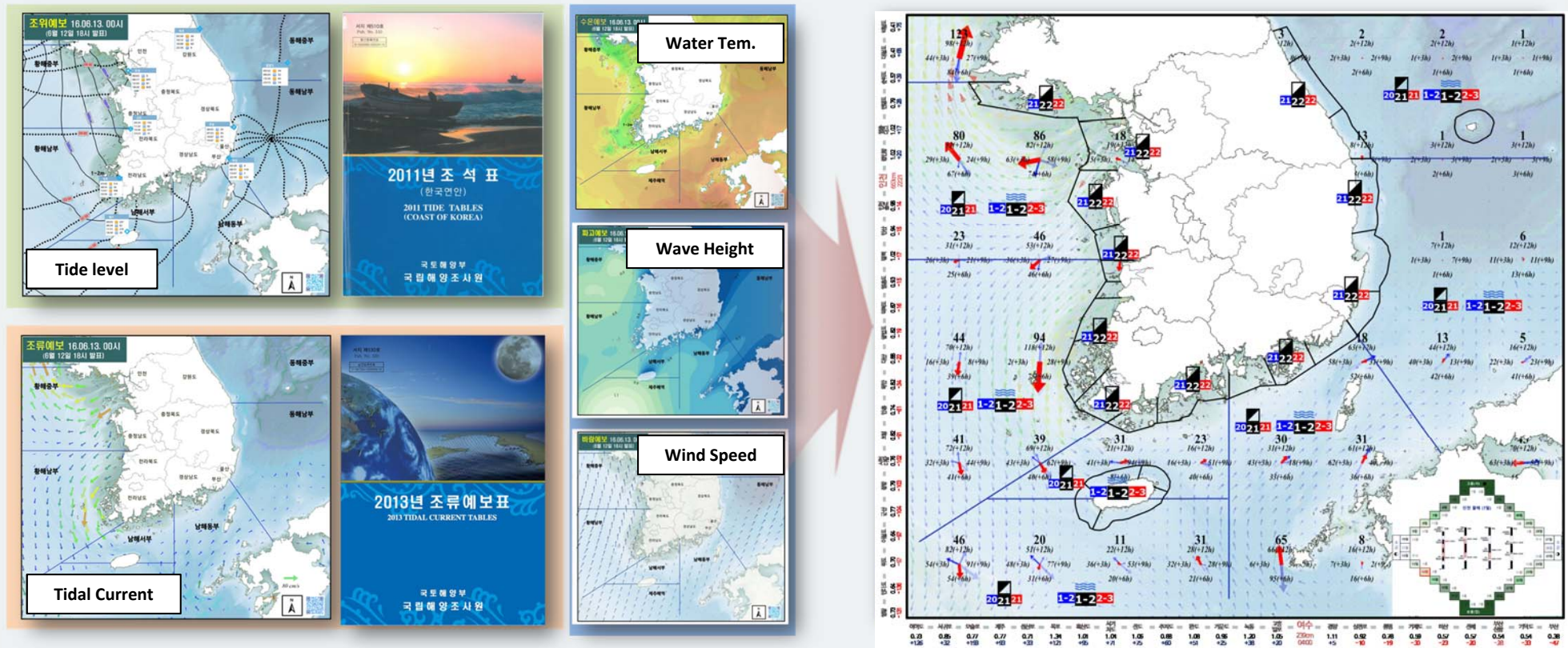
조류정보는 수치예측모델 결과로 실제와는 차이가 발생할 수 있습니다

# BaRoView Advancement Proposal



Ocean Info  
Notification

# All the Oceanographic information on a map





Thank you



# Future Concept of Special overlay for Navigational Information



## Question & Answer