

**Workshop on Visualization of  
Nautical Information**

# **Service for Safety Navigation at KHOA**



**22 May 2017**

Park Inyoung



Ministry of Oceans and Fisheries

**Korea Hydrographic  
and Oceanographic Agency**

**1**

**Provision of MSD Service**

**2**

**Port Oceanographic  
Information System(POIS)**

**Table of  
Contents**



**3**

**Navigational Warning**

**4**

**Others**

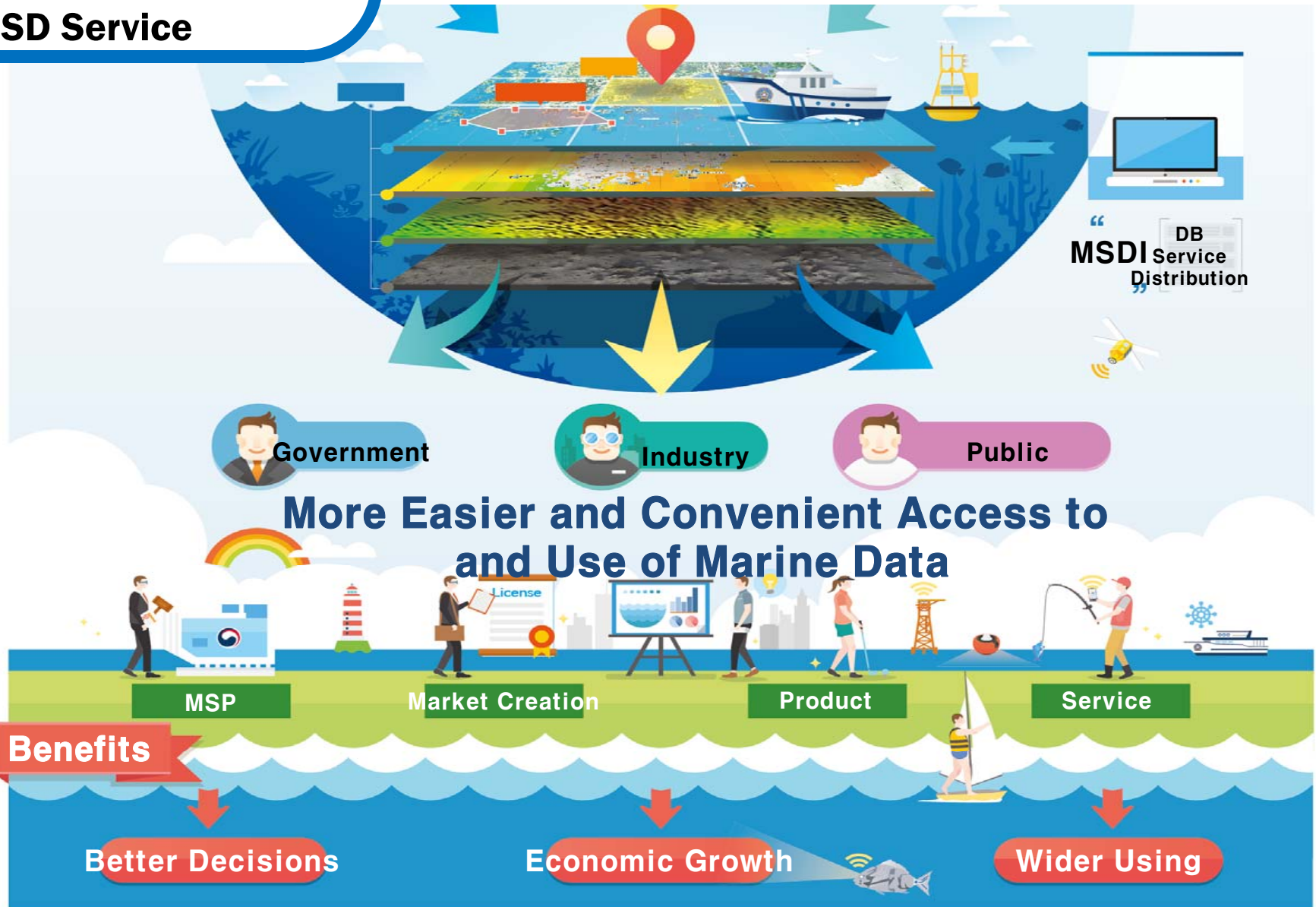


Ministry of Oceans and Fisheries

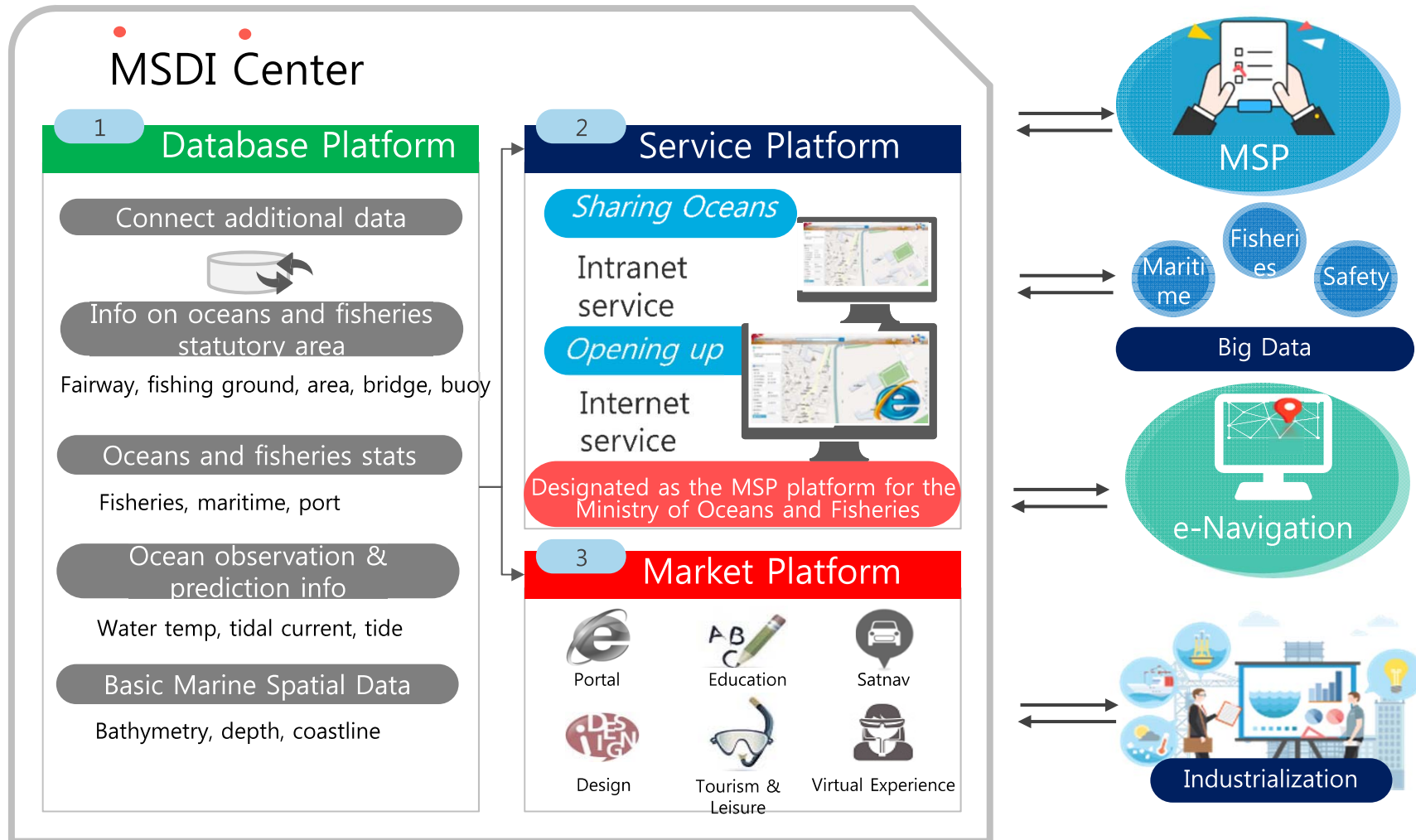
**Korea Hydrographic  
and Oceanographic Agency**



# 1. Provision of MSD Service



# 1. Provision of MSD Service



# 1. Provision of MSD Service

<http://www.khoa.go.kr/oceanmap/main.do>



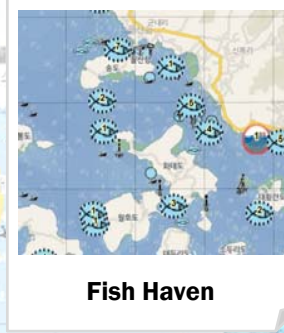
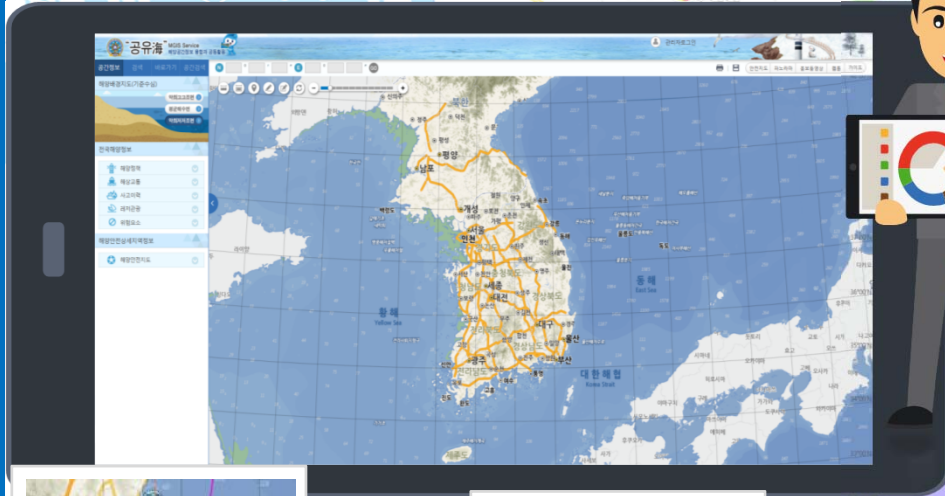
Open-API Open-API 가이드 FAQ 해도수정요청 법적공지 지도범례



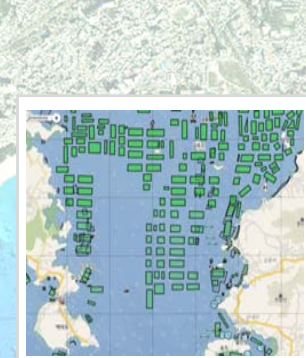


# 1. Provision of MSD Service

## Marine Spatial Data Service



Fish Haven



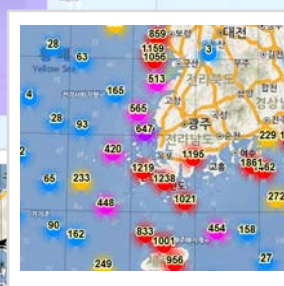
Marine Farm



Jurisdictional Sea Area



Marine Environment Protection Area



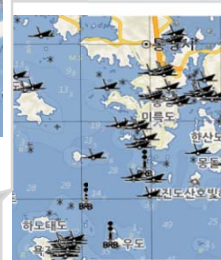
Accident History



Aids to Navigation



Fairway & Port



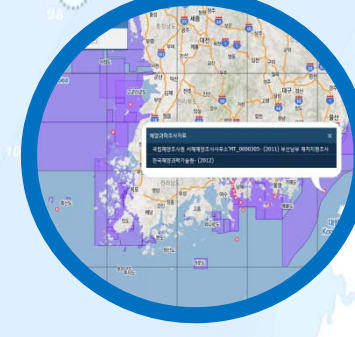
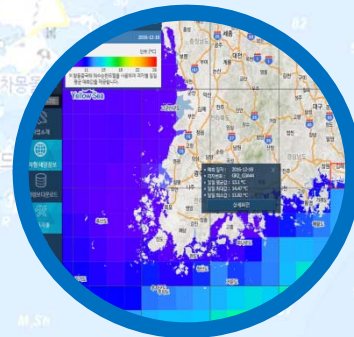
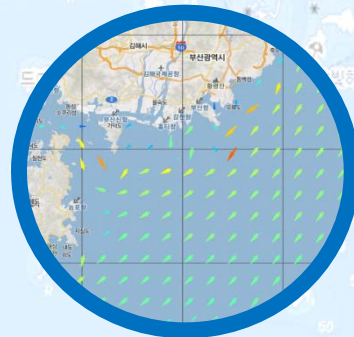
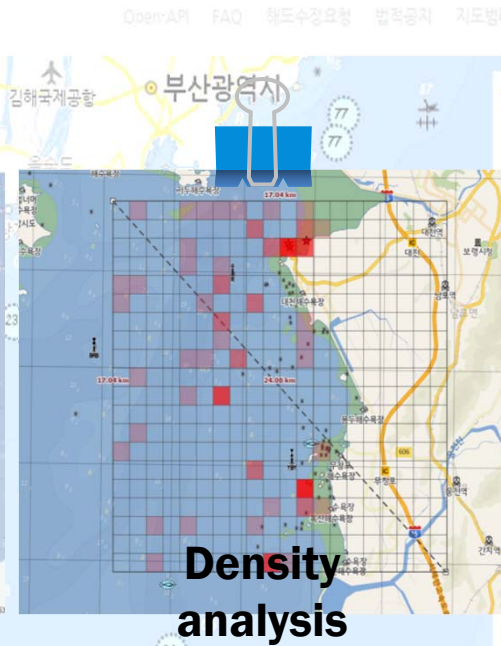
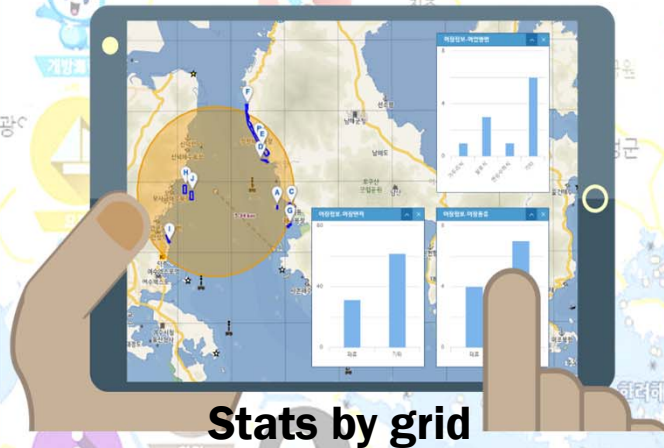
Wreck



Marine Leisure Facilities



# 1. Provision of MSD Service





# 1. Provision of MSD Service

Open-API FAQ 해도수경요청 법적공지 지도범례

Open-API Open-API 가이드 FAQ 해도수경요청 법적공지 지도범례

**Safety**  
안전  
해양안전정보 Layer Service

- Safety for marine traffic
- Customizing safety
- Nature safety
- Facility safety
- Oceanographic survey data

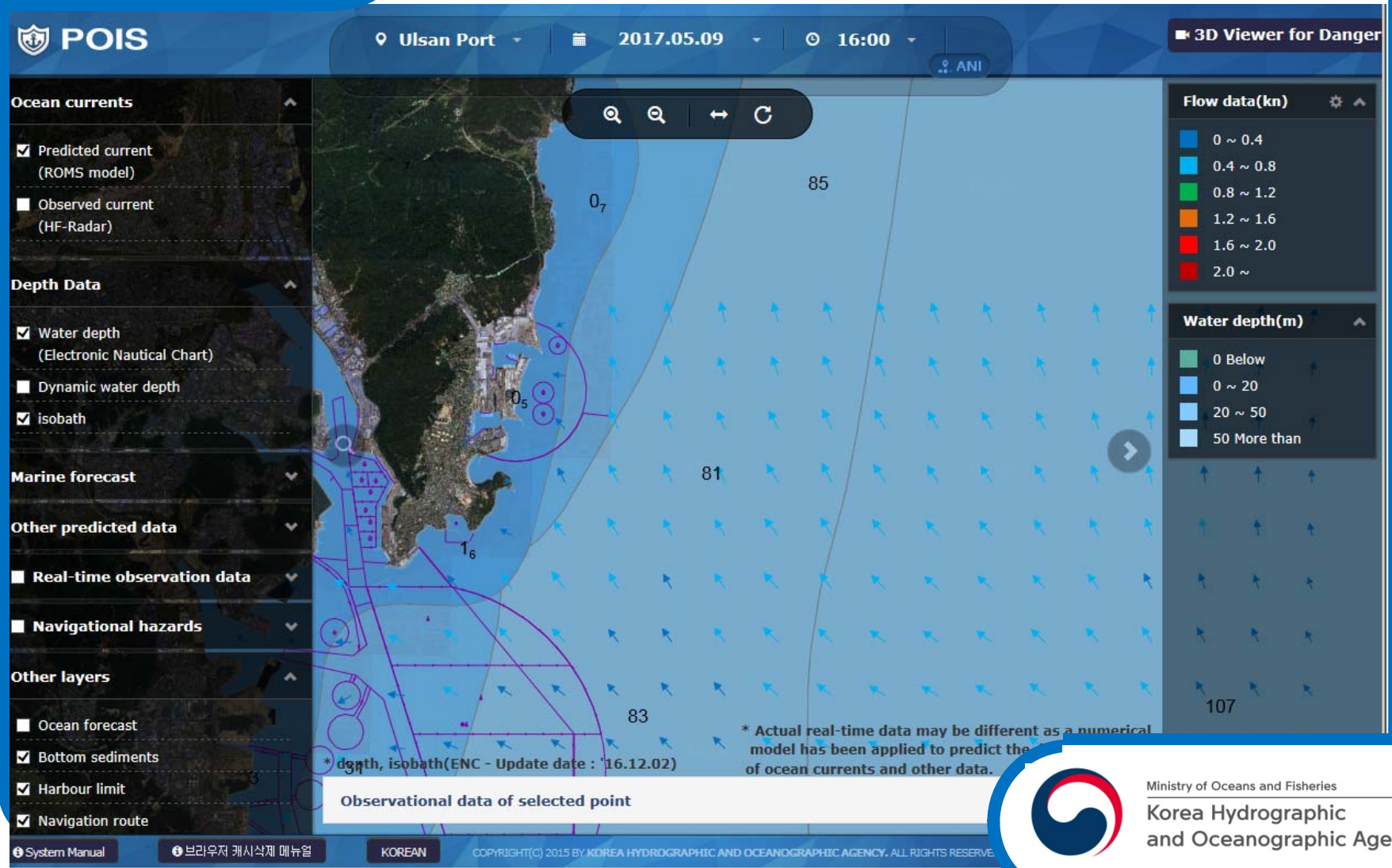
본 해양배경지도는 항해용으로 사용할 수 없습니다.

제주해저계곡

본 해양배경지도는 항해용으로 사용할 수 없습니다.



## 2. POIS



# 2. POIS



## Table of Contents

<b>1. Map Control</b>	
1.1 How to move a map	3
1.2 How to zoom in and out a map	4
<b>2. How to inquire Ocean Currents</b>	
2.1 How to inquire predicted current(ROMS model)	5
2.2 How to inquire graphs for predicted current(ROMS model)	6
2.3 How to inquire observed current(HF-Radar)	7
2.4 How to inquire graphs for observed current(HF-Radar)	8
<b>3. How to inquire depth of water</b>	
3.1 How to inquire depth of water from electronic nautical chart	9
3.2 How to inquire dynamic depth	10
3.3 How to inquire graphs for dynamic depth	11
<b>4. How to inquire data from sea fog observation</b>	
4.1 How to inquire data from weather data	12
4.2 How to inquire CCTV	13
<b>5. How to inquire marine forecast</b>	
5.1 How to inquire port marine safety index	14
5.2 How to inquire graphs for port marine safety index	15
<b>6. How to inquire other forecasts</b>	
6.1 How to inquire sea surface temperature(ROMS model)	16
6.2 How to inquire graphs for sea surface temperature(ROMS model)	17
6.3 How to inquire sea surface temperature(satellite)	18
6.4 How to inquire graphs for sea surface temperature(satellite)	19
6.5 How to inquire wind speed/direction, atmospheric pressure at the surface and wave	20
6.6 How to inquire graphs for wind speed/direction, atmospheric pressure at the surface and wave	21
<b>7. How to inquire real-time observations</b>	
7.1 How to inquire real-time observations	22
7.2 How to inquire graphs for real-time observations	23
<b>8. How to inquire navigational hazards</b>	
8.1 How to inquire navigational hazards	24
<b>9. Other layers</b>	
9.1 How to display ocean forecasts	25
9.2 How to display bottom materials, harbor limit, route of ship and anchoring basin.	26
<b>10. Other functions</b>	
10.1 Animation function	27
10.2 Distance measuring function	28
10.3 Observations of a selected point	29
10.4 Ocean road view	30
10.5 CCTV video	31
10.6 Language conversion	32



### **3. Navigational Warning**

<http://www.khoa.go.kr/hpt/hpt.do>

- KHOA provides about 450 NWs per year to the mariners.
  - \* NTM : about 1,200 (in 2015)
- The notification method collects the NW information through the related organizations and reports the electronic document, FAX, web and mobile service through the management system (DB and GIS-based status sheet) after checking the coordinates, schedule, etc.
- The NW characteristics of KHOA occupy a large number of items related to naval exercises and have complex structures such as tabular date / time / coordinates.

# 3. Navigational Warning

관리자님 접속중

계시판 | 레이어관리 | 설정 | 로그아웃

**항행경보이력** 검색하기

전체 전체

시작일 종료일

검색어를 입력하세요

신규 검색

---

검색결과

- 제15-7호**

항행경보(제15-7호) 상설 해상사격훈련 실시 알림

2015-11-17 ~ 2015-11-18 관리자
- 제15-6호**

항행경보(제15-6호) 상설 해상사격훈련 실시 알림

2015-10-14 ~ 2015-11-17 관리자
- 제15-5호**

항행경보(제15-5호) 상설 해상사격훈련 실시 알림

2015-11-11 ~ 2015-11-17 관리자
- 제15-1호**

항행경보(제15-1호) 비상설 해상사격훈련 실시 알림

2015-11-17 ~ 2015-11-25 관리자

+ 검색결과 20건이 더 있습니다.

해상사격 ■

해상사격 ■

해상사격 ■

해상사격 ■

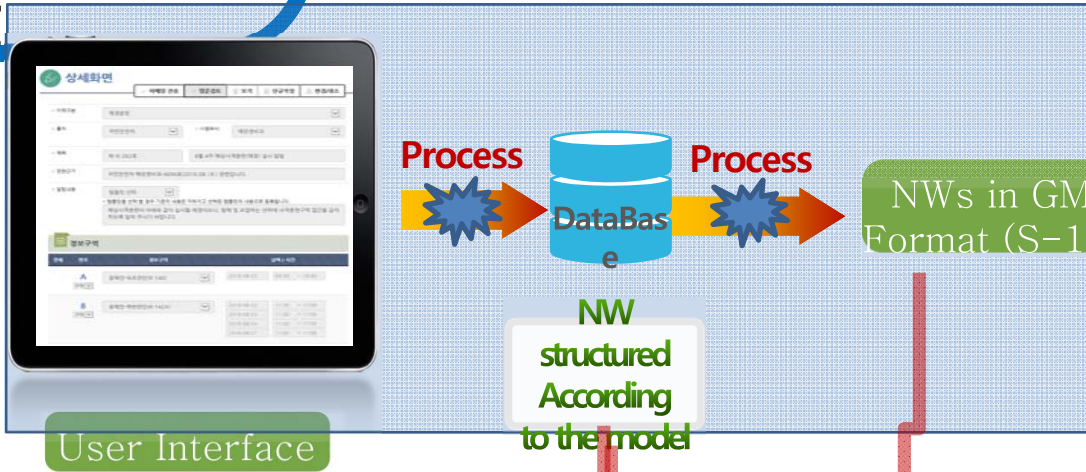
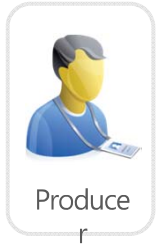
해상사격 ■

금지 주의 협조 취소 | 위도 752.4 경도 875.6

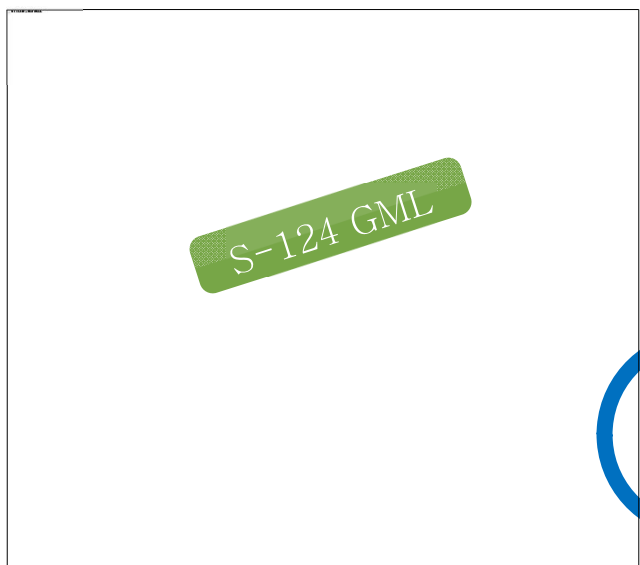
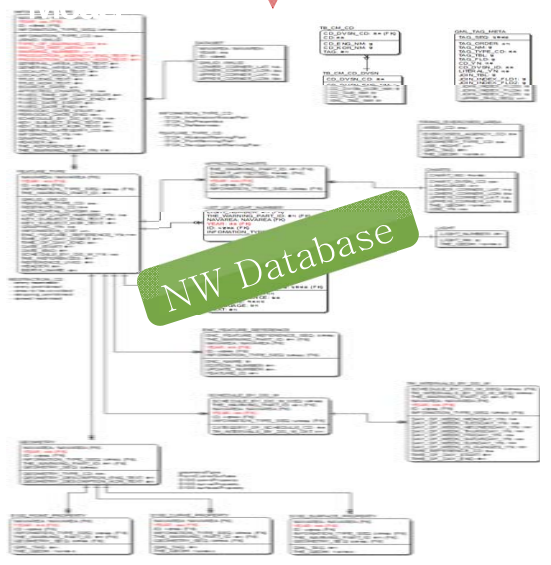
(c) 2015 Korea Hydrographic and Oceanographic Agency



# 3. Navigational Warning

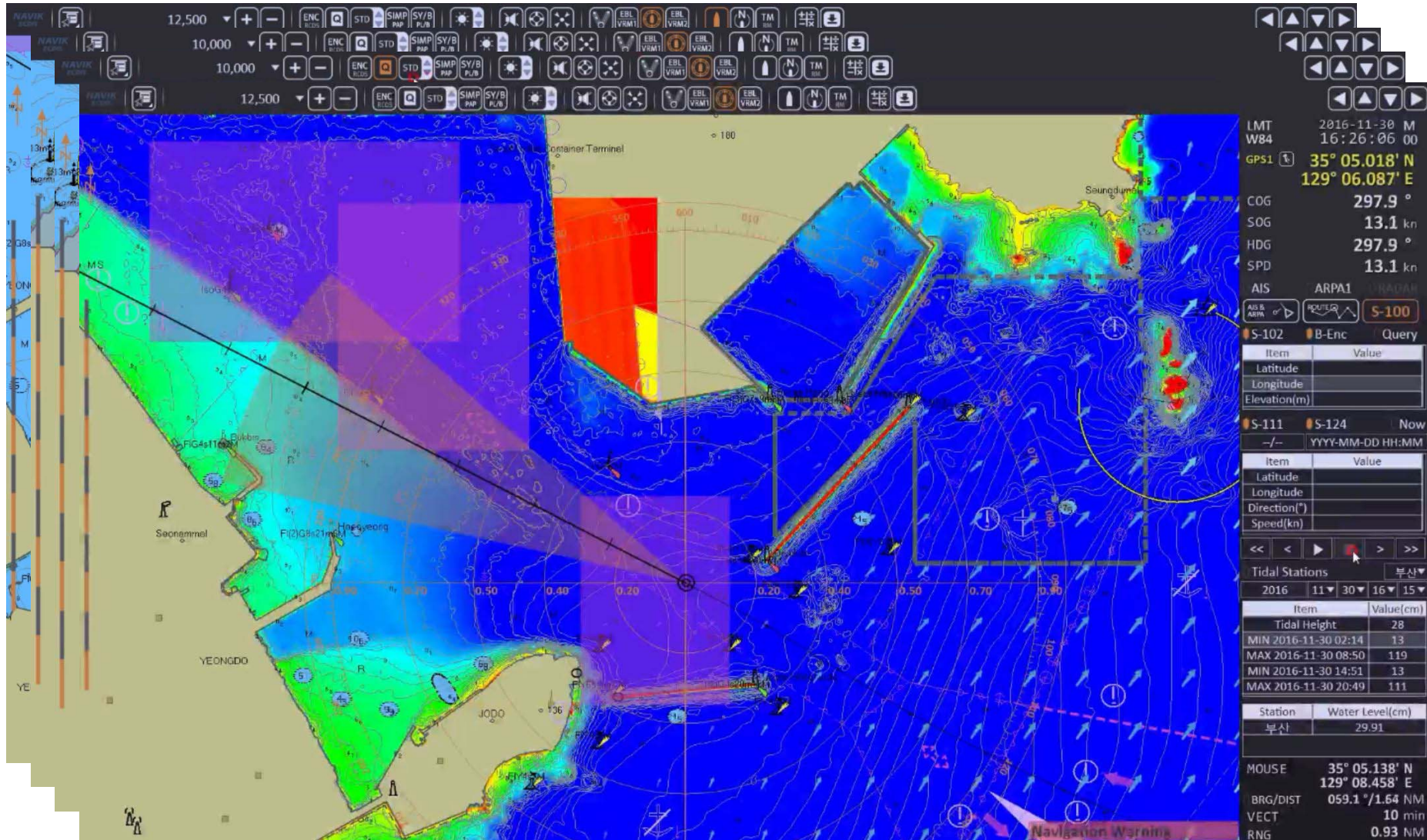


RDBMS based on the S-124 UML > Production of trial data > S-124 TDS Production Implications



A green box labeled '가시화' (Visualization) is positioned above the logo of the Korea Hydrographic and Oceanographic Agency. The logo includes the text 'Ministry of Oceans and Fisheries' and 'Korea Hydrographic and Oceanographic Agency'.

# 3. Navigational Warning





# 4. Others

<http://www.khoa.go.kr/kcom/cnt/selectContentsPage.do?cntId=31307000>

## Distance Service



Distance  Korea  Oversea country

#	Position	speed (Knot)	duration	Total duration
0				
1				
2				
3				
4				
5				
6				
7				
8				
9				
10				
11				
12				

Add Point

Delete Point

Lat.

Long.

enter

Km -> Mile

## 4. Others

<http://www.khoa.go.kr/seaVr/en/index.html>

### Submarine expedition RoadView VR services

KOREA HYDROGRAPHIC  
AND OCEANOGRAPHIC AGENCY

## Submarine expedition RoadView VR services

Dokdo

독도

Jejudo

제주도

East Coast

동해안

South Coast

남해안

Korean | English



Thank you