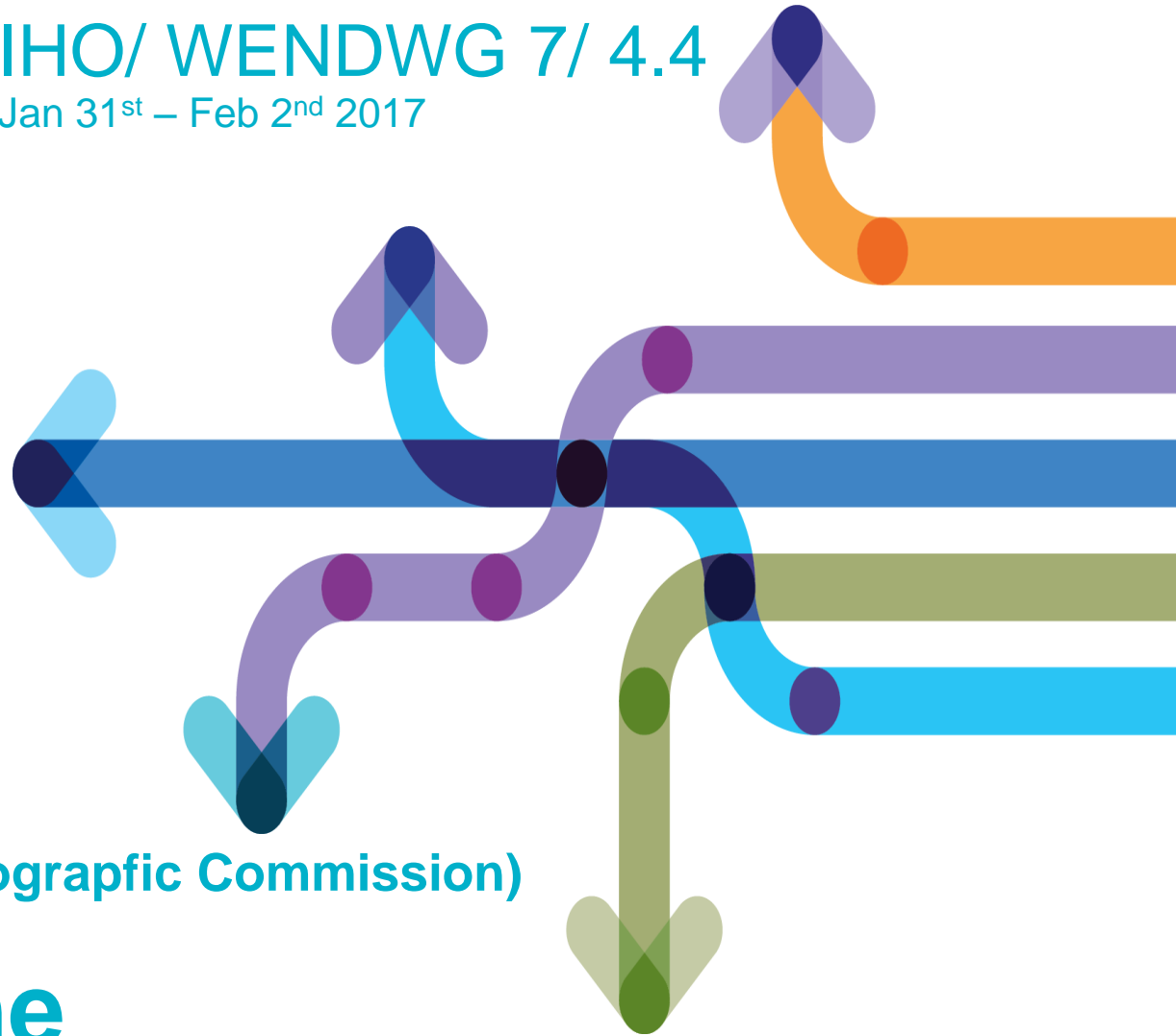




IHO/ WENDWG 7/ 4.4
Jan 31st – Feb 2nd 2017



Region E
BSHC (Baltic Sea Hydrographic Commission)

ENC Scheme

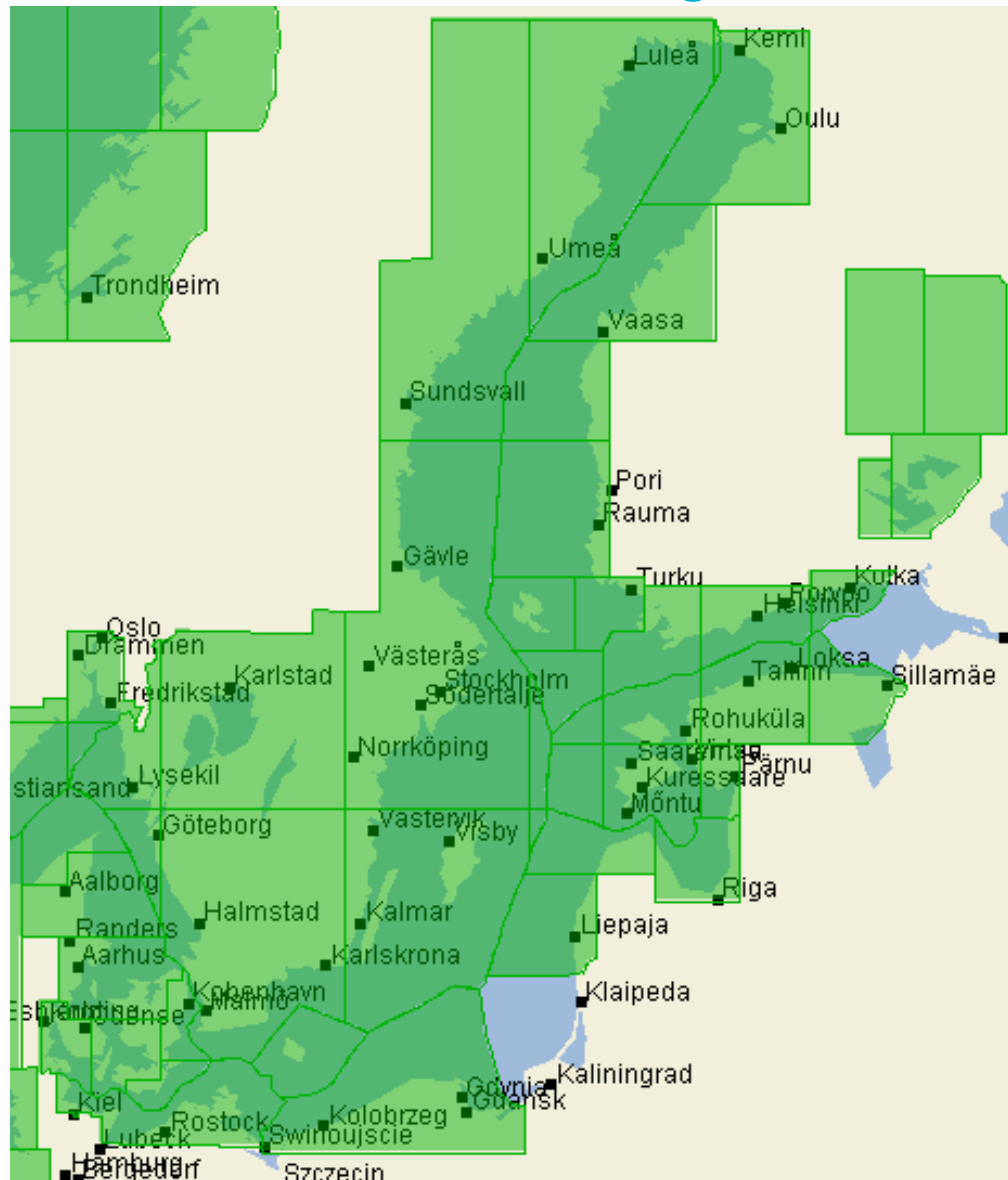


BSHC –ENC coverage: Overview



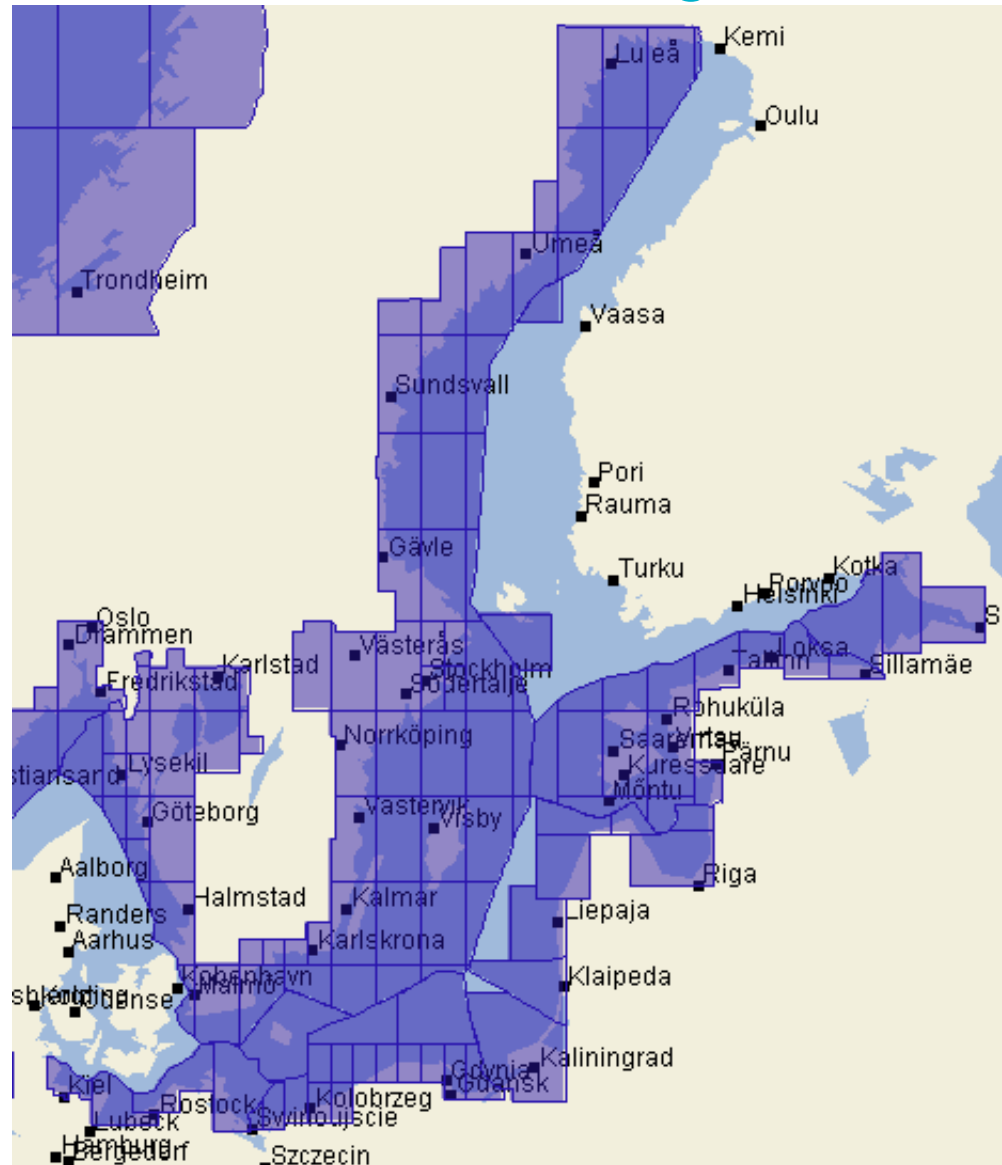


BSHC –ENC coverage: General



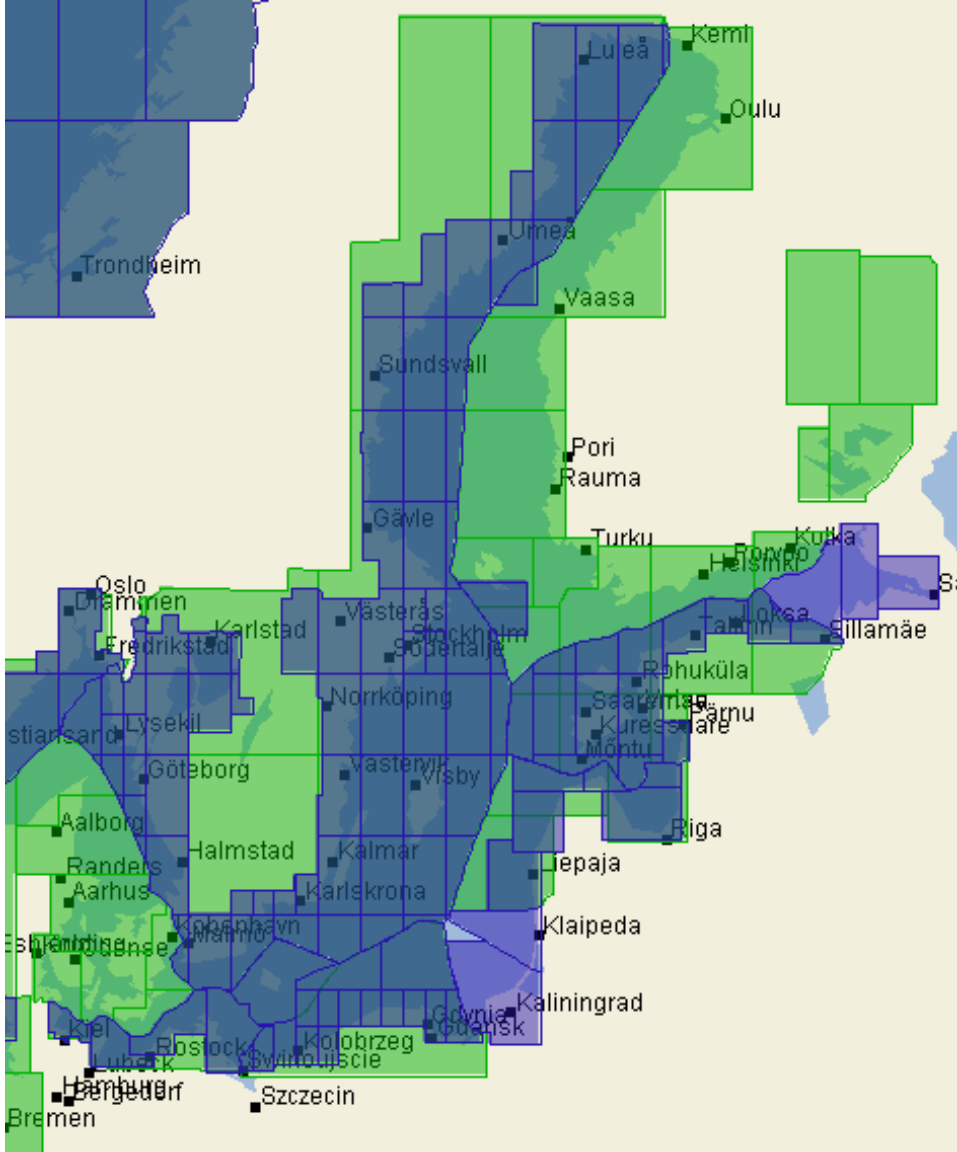


BSHC –ENC coverage: Coastal



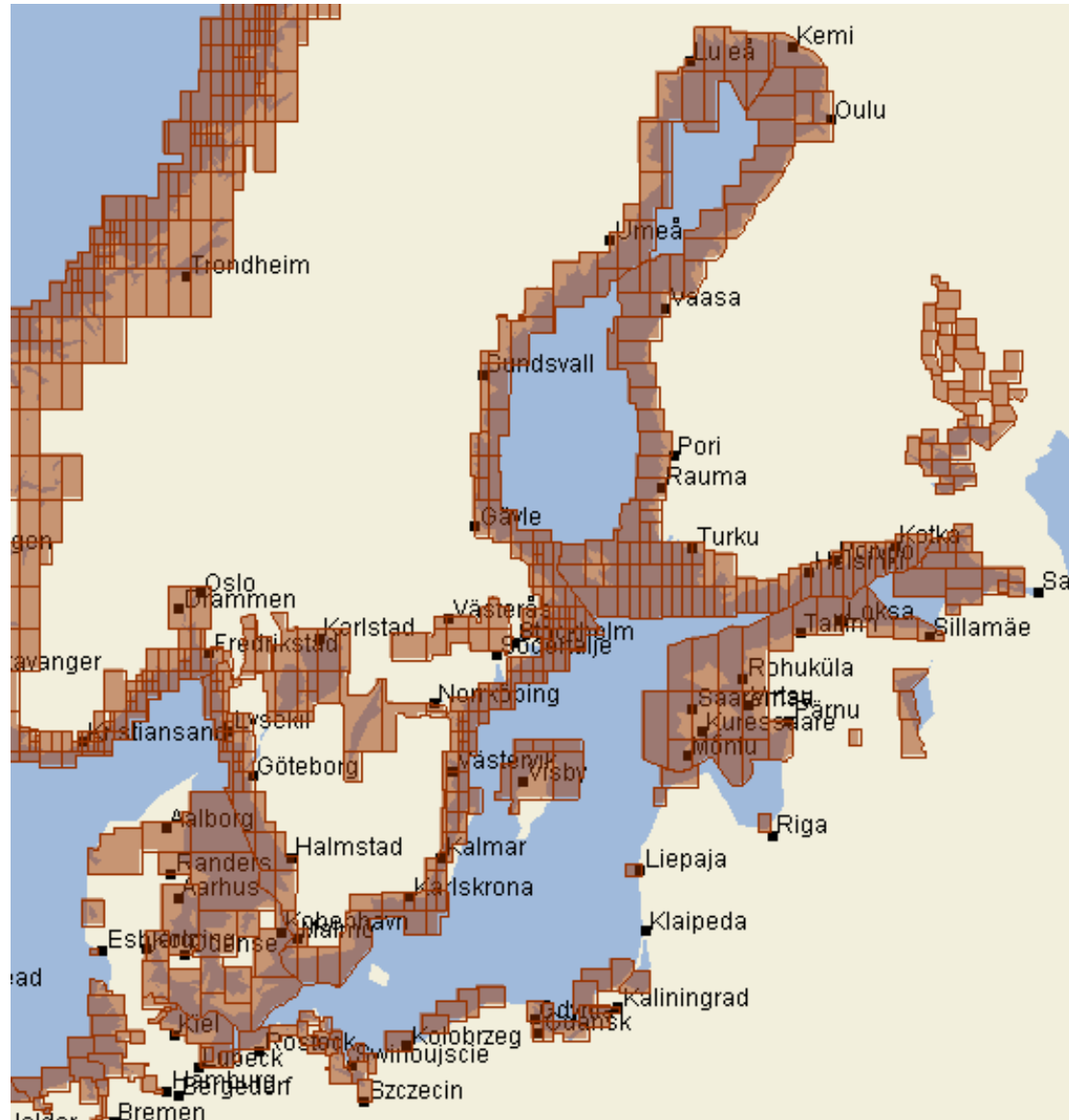


BSHC –ENC coverage: Coastal+ General





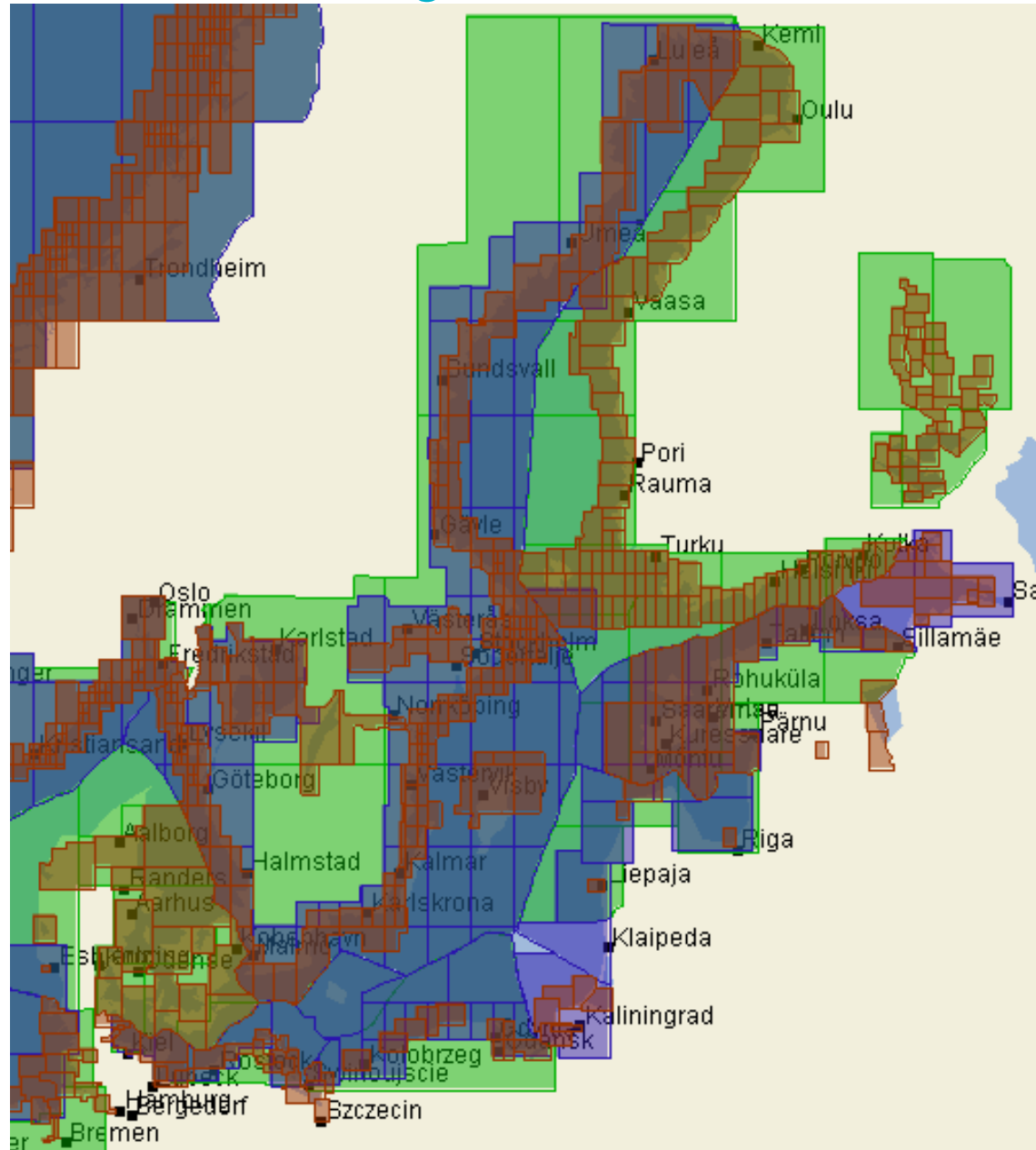
BSHC –ENC coverage: Approach



Source: Primar Chart Catalogue



BSHC ENC coverage: General+Coastal+ Approach





Baltic Sea ENC Scheme

Agenda of BSICCWG meeting (Dec 2016) included:

- Status of IHO ENC Catalogue
- WENDWG6 Action 6: RHCs to Define and Adopt ENC Schemes
 - > need to have more ENC specialists present at the wg meetings.
- Status of ENC Coverage in Baltic Sea. Review of Baltic Sea ENC – scheme was analyzed by all members present.
 - Finland will extend coastal coverage in the future. Finland will also extend the ENC coverage in lake areas.
 - Latvia will extend coastal coverage.
 - Poland is planning new approach and berthing coverage.
 - Estonia has project for changing the compilation scale for the Estonian approach cells
 - Study for coastal/approach cells on the northern part of Denmark
 - Discussion how to inform changes on the ENC coverage? Automatic message from RENC? Discussion with Primar.
 - Process to update Baltic Sea ENC Harmonisation Recommendations is going on



BSHC –ENC Scheme: Overlaps

Overlaps 2015

Cellname	Cellname 1	Usage Band
PL3MP153	DK3BORNH	3
RU3NCJP9	LT382001	3
RU3NCJP9	PL3K0030	3
RU3NCJP9	PL3MP151	3
RU3NSKI9	EE3D0201	3
RU3NSKI9	EE3D0403	3
DK4LGLGS	DE416050	4
DK4LILBS	DE416012	4
PL4MAP37	DE416090	4
RU4NDJS8	PL4MAP41	4
SE4DHWHE	DK4GSMON	4
SE4DHWHE	DK4SUNDT	4
SE4DHWHE	DK4SUNDT	4
SE4DHWHG	DK4GSMON	4
SE4DI0XC	DK4KATGS	4
SE4DI0XE	DK4SUNDT	4
SE5IHZTE	DK5HLSNS	5

Overlaps 2016

Cellname	Cellname 1	Usage Band
PL2MP500	DE216000	2
PL3MP153	DK3BORNH	3
RU3NCJP9	LT382001	3
RU3NCJP9	PL3K0030	3
RU3NCJP9	PL3MP151	3
DK4LGLGS	DE416050	4
DK4LILBS	DE416012	4
RU4NDJS8	PL4MAP41	4
RU400KM9	FI4EIJV2	4
SE4DHWHE	DK4GSMON	4
SE4DHWHE	DK4SUNDT	4
SE4DHWHG	DK4GSMON	4
SE4DHYPE	DK4SUNDT	4
SE4DI0XC	DK4KATGS	4
SE4DI0XE	DK4SUNDT	4
SE5IHZTE	DK5HLSNS	5

Overlaps from NHC listing -> belongs to BSHC

Ports Not Covered (from IHO Ports Gazetter)

Port Name	Country	Port Size
BOLSHAYA PIRYU GUBA	RU	S

Overlaps 2016

Cellname	Cellname 1	Usage Band
RU3NSKI9	EE3D0201	3
RU3NSKI9	EE3D0403	3
RU401KN9	FI4EIJV2	4



BSHC –ENC Scheme

ID	STATUS	RENC/Non-RENC	RHC	ENC 1	ENC 2	Usage Band	ENC 1 Scale	ENC 2 Scale	ENC 1 EN (ER)	ENC 2 EN (ER)	Overlap extent (Kmxkm) (m/square NM)	Content difference	Geog. Location	Shipping density	Size	Scale	Route patterns	ECDIS
3	ACCEPT	IC-ENC	BSHC	DK4LGLGS	DE416030	4	22 000	22 000	47 (0)	9 (10)	5mx73km	LOW	MEDIUM	MEDIUM	LOW	HIGH	HIGH	LOW
5	LIVE	IC-ENC	BSHC	DK4LILBS	DE416012	4	22 000	22 000	52 (1)	2 (9)	8.8m x 23Km	LOW	HIGH	LOW	LOW	MEDIUM	HIGH	MEDIUM

Overall Severity of Risk	Justification	Action requested	Date Identified	Comments
ACCEPT	Thin overlap between different producers, mainly within the permitted 5m wide tolerance not exceeding 10m wide. Overlap is middle of the channel.	None		Less than 5m
MEDIUM	A thin overlap between different producers, just over permitted 5m tolerance. Overlap is in middle of channel. There is buoy which sits on the external edge which appears and disappears.	HOs to discuss and resolve overlaps		Affects display of the Flensburger Forde buoy when moving between the two cells

BSHC –ENC Scheme



ENC Information: DK4LILBS

Property	Value
Product Id	DK4LILBS
Product Name	Little Belt South...
Product Type	ENC
Usage Band	Approach
Country	Denmark
Compilation Scale	22000



ENC Information



DE416012 : Geltinger Bucht
DK4LILBS : Little Belt Southe

ENC Information: DE416012

Property	Value
Product Id	DE416012
Product Name	Geltinger Bucht
Product Type	ENC
Usage Band	Approach
Country	Germany
Compilation Scale	22000





BSHC –ENC Scheme

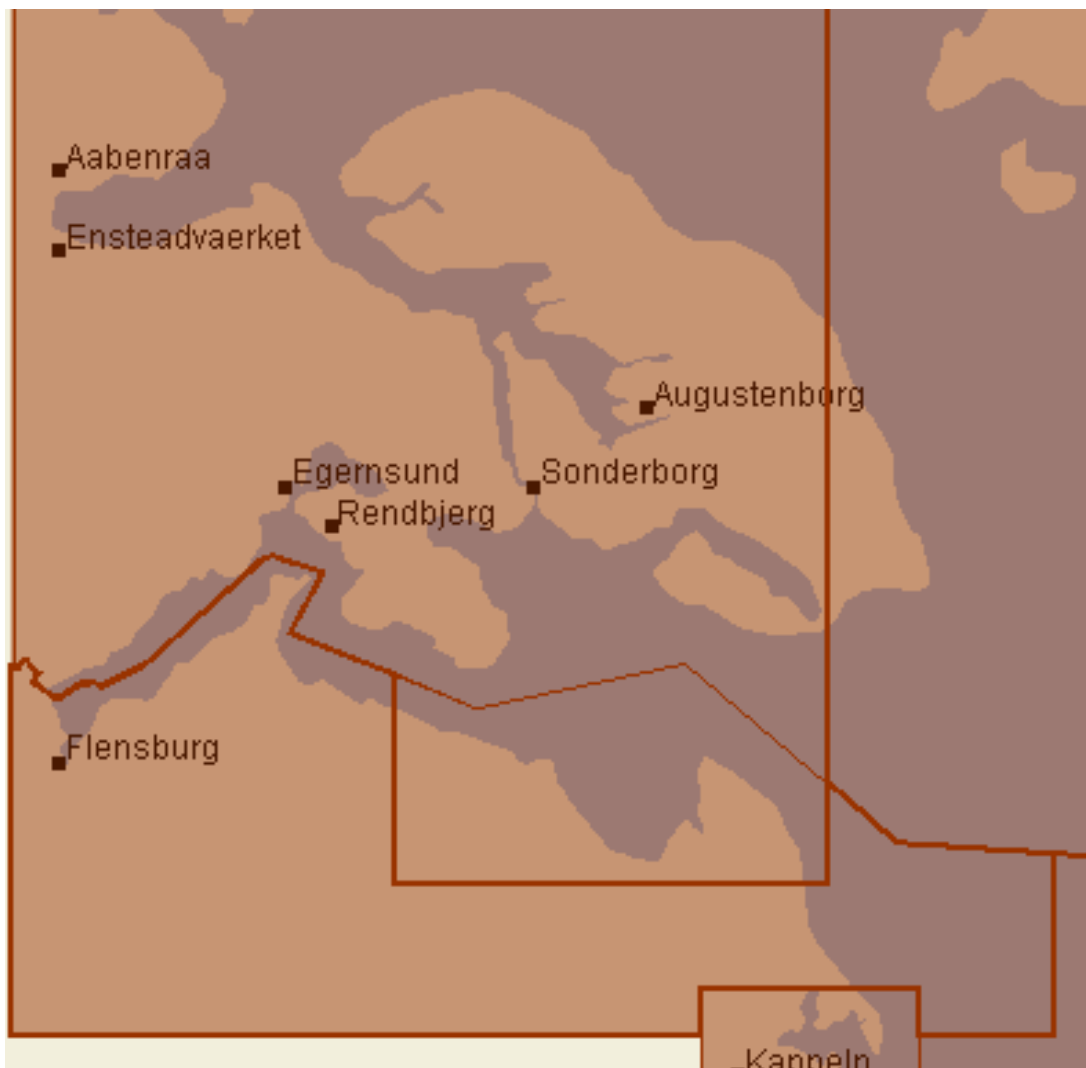



ENC Information 

DE416012 : Geltinger Bucht
DK4LILBS : Little Belt Southe



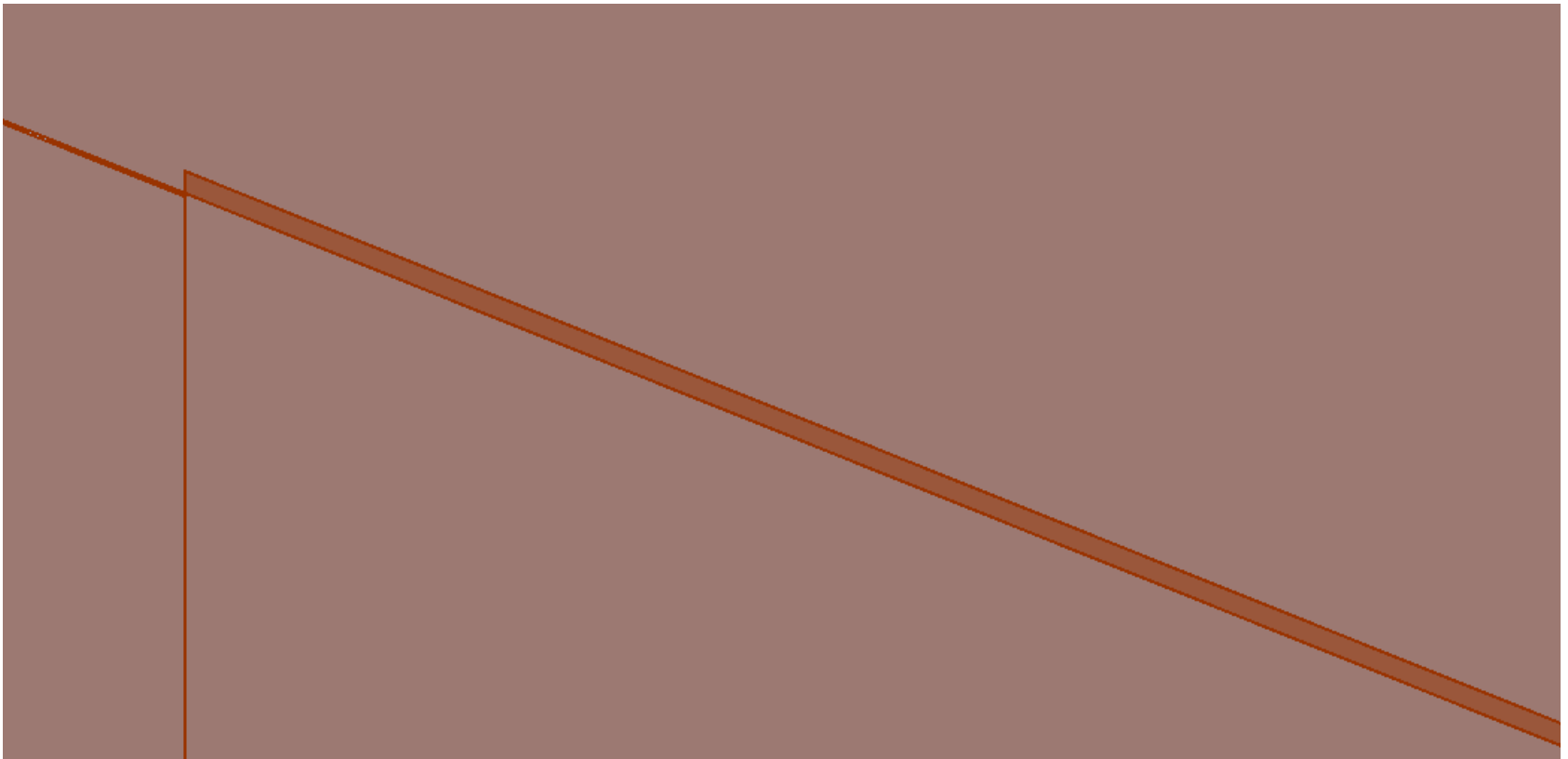
BSHC –ENC: Coverage areas DE416012 and DK4LILBS



ENC Information 	
DE416012	: Geltinger Bucht
DK4LILBS	: Little Belt Southern



BSHC –ENC Overlap area between DE416012 and DK4LILLBS





BSHC process to solve overlaps

- Many overlaps between BSHC member States have been studied and solved. Some countries have been very active.
 - Result of overlaps can be different, depending on tools used for analysing?
 - Analysis of Gaps and overlaps is continuous work in BSICCWG (Baltic Sea INT Chart Coordination Working Group)
 - BSICCWG reports of gaps and overlaps yearly to BSHC
 - BSICCWG Chair will send WENDWG report of gaps and overlaps to members states who have to report back.
- TARGET - > No gaps, no overlaps**