

IC-ENC Overlapping data policy

WENDWG7 January 2017

Background

- ▶ ISO9001 internal audit of Overlapping Data policy and procedure.
- ▶ Continuous improvement activity
- ▶ Changes approved by IC-ENC Steering Committee December 2016
- ▶ Update to WENDWG7

Summary of process

- ▶ Overlap identified during validation

- ▶ Is it possible to resolve?
 - Yes – great, all part of the RENC service 😊, problem prevented

 - No – risk assess, via a structured process:
 - Risk Criteria
 - Communication (HOs, RENCs)
 - Reporting (HOs, RENCs, RHCs, WENDWVG, IHB)

Purpose of this report:

- ▶ Examine IC-ENC's evolution of its overlapping data policy, with a view to establishing 'best practice'.
- ▶ Review IC-ENC's reporting to RHCs, with a view of agreeing a 'best format' report.
- ▶ Recognise that this analysis is only relevant to IC-ENC members' ENC's, and assess the implications of this.

Continuous Improvement of policy

- ▶ Reference is now made to IC-ENC ENC Quality Assurance classifications of “HO Must Correct”, “HO Should Correct” and “Accept”.
- ▶ This brings the IC-ENC Overlapping Data policy into line with other IC-ENC QA policies and principles.

Continuous Improvement of policy

- ▶ Communication method (IC-ENC to/from member) and response times from IC-ENC members has been formalized. This is to help tracking and resolution of 'live' overlaps.

Continuous Improvement of policy

- ▶ Distribution of IC-ENC's risk assessment has been extended to include RHC ENC Co-ordinators, in addition to WENDWG Chair (global) and RHC Chair (regional) and IHB (as required)

Continuous Improvement of policy

- ▶ Additional columns in the Master tracking sheet have been introduced, including a justification statement of how the “Overall Severity of Risk” was reached.

Continuous Improvement of policy

- ▶ Additional guidance provided to IC-ENC Validator when assessing the following criteria:
 - Geographic location of the overlap
 - Shipping density
 - Shipping route pattern

Continuous Improvement of policy

- ▶ New criterion added “Display within ECDIS”, building on IC-ENC’s previous (and ongoing) research into ECDIS behavior with respect to overlapping data.

Summary table

Status of overlap	Overall Severity of Risk							TOTAL
	ACCEPT	LOW	MEDIUM	HIGH	POTENTIAL	RESOLVED	UNASSESSED	
ACCEPT	13							13
LIVE		117	26				44	187
POTENTIAL					15			15
RESOLVED						31		31
Grand Total	13	117	26	0	15	31	44	246

Comments

- ▶ This is a ‘work in progress’:
- ▶ Retrospectively re-examining the overlapping data is resource intensive,
- ▶ This work only applies to ENC’s from IC-ENC members, the policy recognizes that three types of overlap scenario will exist:
 - IC-ENC Member & IC-ENC Member (106 Live overlaps);
 - IC-ENC Member and Other RENC Member (53 live overlaps);
 - IC-ENC Member & Non-RENC nation (87 live overlaps).
- ▶ IC-ENC is unable to conduct a full assessment on instances (87) which contain ‘Non-RENC nation’ ENC’s

Tracking Spreadsheet

	A	B	C	D	E	F	G	H	I
1	RENC/ Non- RENC	RHC	ENC 1	ENC 2	Usage Band	ENC 1 Scale	ENC Scale 2	ENC 1 EN (ER)	ENC 2 EN (ER)
2	ICENC	SAIHC	RU1A2K00	AU160060	1	3,000,000	3,500,000	1(0)	2(4)
3									
	J	K	L	M	N	O	P	Q	R
	Overlap (m/square NM)	Average annual sales volume	Content differenc e	Geog. Location	Shipping density	Size	Scale	Route patterns	Overall Severity of Risk
	340Km x 795Km	N/A	LOW	LOW	N/A	LOW	LOW	MEDIUM	LOW
	S	T	U				V	W	X
	Action requested	Date Identified	Comments				Added to Readme.t xt?	STATUS	Last Amended
	Clip to common border	09/03/2015	Dispute regarding clipping to 60 degree S Line				Y	LIVE	26/08/2016

SAIHC report

ic-enc

ic-enc

IC-ENC Overlap (Gap) Report

Cell Name RU1A2K00

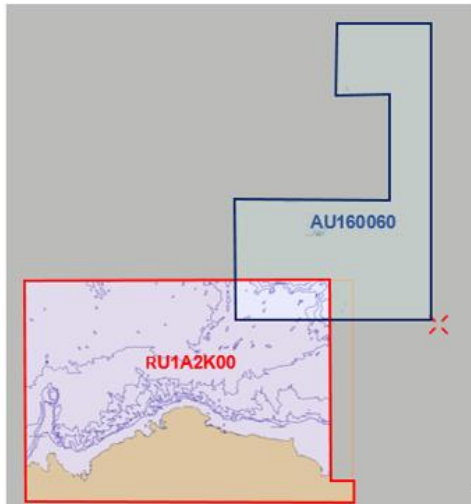
Overlapping (Adjoining) Coverage

Cell name overlaps with the following existing coverage:

Cell Name	Edition: 00(00)
AU160060	2 (4)

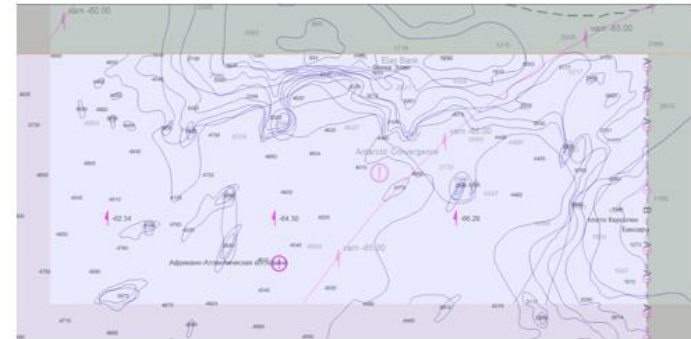
Overlap (Adjoining) Diagram

Sample



Overlap Consistency

All deep water, and reasonable consistency.



IC-ENC Overlap Summary

ENC 1	ENC 2	Data Consistency	Location	Shipping Density	Extent of Overlap	ENC Compilation Scales	Shipping Patterns	Overall
RU1A2K00	AU160060	LOW	LOW	N/A	LOW	LOW	MEDIUM	LOW

Conclusions

- ▶ Making an assessment of each instance of overlapping data is important and valuable.
- ▶ Simply reporting the 'number of overlaps in a region' is useful, but is a little too crude.
- ▶ IC-ENC's policy provides a structured framework for making the assessment. It is a structure only – each instance must be assessed on its own merits and there may be local factors which take precedence.

WENDWG invited to:

1. Note this report
2. Examine IC-ENC's evolution of its overlapping data policy, with a view to establishing 'best practice'
3. Review IC-ENC's reporting to RHCs, with a view of agreeing a 'best format' report
4. Recognise that this analysis is only relevant to IC-ENC members' ENCs,
and assess the implications of this.

