



MYANMAR NATIONAL REPORT

To

the 17th North Indian Ocean Hydrographic Commission Meeting

17th-20th July 2017, Cairo

Egypt

1. Myanmar Naval Hydrographic Centre-MNHC

1.1 Myanmar Naval Hydrographic Centre-MNHC was founded since 1952 has been conducting hydrographic surveys and producing nautical charts. MNHC is the only one authorized government organization which has solely responsibility of producing charts in the country though it is established under Myanmar Navy. MNHC is working together with International Hydrographic Community now days and other local government organizations such as Myanmar Port Authority, Myanmar Oil and Gas Enterprise-MOGE, Department of Marine Administration-DMA and Directorate of Myanmar Inland Waterway, etc.



1.2 MNHC is also responsible for Maritime Safety Information-MSI in the working network of neighboring navies, NAV AREA Coordinator and Foreign HOs as a Maritime Safety Information Division is organized under its control.



2. MNHC's Mission

2.1 MNHC is focusing on National Shipping Volumes at Major and Minor Ports and producing the nautical charts in accordance with IHO standards. MNHC also aims to participating in International Hydrographic Events and Hydrographic Communities at different levels.

2.2 MNHC is also to conduct hydrographic surveys at National Waters in accordance with MNHC's own chart scheming.


ရေတပ်ဝင်ပံ့ဆောင်ရေးဌာနမှ ထုတ်ဝေခြင်းသောစာရင်းစာတမ်း


စဉ်	ရေခံအမည်	ရေခံအမျိုးအမည်	ထုတ်ဝေသည့်နေ့စွဲ	စဉ်	ရေခံအမည်	ရေခံအမျိုးအမည်	ထုတ်ဝေသည့်နေ့စွဲ
1.	ပင်လယ်ကမ်းခြေ	36	17 th Edition, December - 1960	37.	PYIN SA LAY RIVER AND APPROACHES	1994	17 th Edition, 1994
2.	TAYWY ISLAND OR MALE	47	17 th Edition, November - 1961	38.	PELAWAN RIVER AND APPROACHES	1994	17 th Edition, 1994
3.	NEAPALU (BA GYI SAN)	27	17 th Edition, January - 1962	39.	SA KUN THEE ISLAND TO YANG UNE ISLAND	12	17 th Edition, 1994
4.	BANEN RIVER ENTRANCE	47	17 th Edition, March - 1961	40.	DOME KYIN	46	17 th Edition, November - 1993
5.	ပျောက်ကွယ်သွားသော ရေခံ	37	17 th Edition, May - 1963	41.	DOME PALE AIR PLAN CHART	495	17 th Edition, 1993
6.	ZUKET KYIN SA SHAN	37	17 th Edition, May - 1963	42.	SEI THAYE ISLANDS ISLAND PLAN CHART	710	17 th Edition, 1993
7.	အုတ်တောင်ကျွန်း	37	17 th Edition, November - 1961	43.	BO GALY RIVER AND APPROACHES	195	17 th Edition, 1993
8.	CHYO ISLAND GROUP	27	17 th Edition, March - 1961	44.	UN THONG CHONG CHANG	229	17 th Edition, November - 1993
9.	ခွေးကန်	37	17 th Edition, April - 1961	45.	WEST POINT TO NORTH LEDGE ROCK	46	17 th Edition, November - 1993
10.	NAAF RIVER	27	17 th Edition, September - 1960	46.	NORTH LEDGE ROCK TO SOUTH ISLAND	46	17 th Edition, November - 1993
11.	ပိတ်တောက်	27	17 th Edition, March - 1976	47.	HOPU POINT TO BAN YE KYIN	47	17 th Edition, April - 1999
12.	တိမ်	47	17 th Edition, March - 1976	48.	ENTRANCE TO KALABA	27	17 th Edition, December - 2000
13.	အောက်ပူရိကျွန်းကျွန်းစု	37	17 th Edition, May - 1955	49.	THANDEE AW TO YANG UNE ISLAND	10	17 th Edition, February - 2001
14.	MYER HARBOR	47	17 th Edition, March - 1972	50.	ENTRANCE TO KAIK STANANG CHONG	54	17 th Edition, May - 2001
15.	အားပေးကျွန်း	27	17 th Edition, June - 1972	51.	ENTRANCE TO HENZE CHONG	46	27 th Edition, May - 2001
16.	ထိုင်းကျွန်း	36	17 th Edition, September - 1975	52.	SA HON KYIN TO GONGA KYIN	27	17 th Edition, September - 2001
17.	အိမ်ကျွန်း	37	17 th Edition, October - 1975	53.	ENTRANCE TO HON CHEN ISLAND	26	17 th Edition, November - 2001
18.	ထွေးကျွန်း	37	17 th Edition, October - 1975	54.	CHANG ROCK TO SA HON KYIN	27	17 th Edition, November - 2001
19.	ရေပူကျွန်း	37	17 th Edition, April - 1976	55.	THANOT RIVER AND APPROACHES	2	27 th Edition, February - 2002
20.	CHERUK STRAIT AND SANDHUR (SUNNIB) HARBOR	26	17 th Edition, June - 1980	56.	AN CHONG RIVER AND APPROACHES	2	27 th Edition, February - 2002
21.	CHERUK STRAIT AND MEN ANUNG ISLAND	23	17 th Edition, September - 1980	57.	ENTRANCE TO MARET	34	17 th Edition, 2002
22.	KALIGAN KYIN	47	17 th Edition, August - 1982	58.	KAN TAY KYIN TO WA TANG KYIN	34	17 th Edition, 2002
23.	MEN ANUNG ISLAND AND SANDHUR BAY	22	17 th Edition, August - 1982	59.	KAN TAY KYIN	34	17 th Edition, 2002
24.	PREPARS ISLAND	27	17 th Edition, February - 1983	60.	MAUZI TANG KYIN TO HON SAUKHAN KYIN	34	17 th Edition, 2002
25.	DR J HARGREAVES AIR FORCE (1) SPECIAL FORCE	57	17 th Edition, February - 1984	61.	PE LONE TANG KYIN TO SA HON KYIN	34	17 th Edition, 2002
26.	SITTAW HARBOR	27	17 th Edition, May - 1980	62.	ENTRANCE TO KAIK CHONG	34	17 th Edition, 2002
27.	DAMEL ISLAND TO LAMP ISLAND	34	17 th Edition, May - 1983	63.	ALUNG BA AIR	34	17 th Edition, 2002
28.	MINGALA KYIN	37	17 th Edition, April - 1986	64.	ENTRANCE TO MATHE CHONG	34	17 th Edition, 2002
29.	PERKAN POINT	37	17 th Edition, May - 1986	65.	ENTRANCE TO THE RIVER	37	17 th Edition, December - 2002
30.	BIRINGA ISLAND	27	17 th Edition, May - 1987	66.	ENTRANCE TO TRANDER RIVER	37	17 th Edition, December - 2002
31.	BIRN ISLAND TO DAMEL ISLAND	34	17 th Edition, May - 1987	67.	ENTRANCE TO PHAN RIVER	27	17 th Edition, January - 2004
32.	HON ISLAND TO CALA ISLAND	33	17 th Edition, May - 1987	68.	ENTRANCE TO MGLY RIVER	34	17 th Edition, January - 2004
33.	GORNEY HARBOR	27	17 th Edition, May - 1990	69.	ENTRANCE TO PEN SA LA RIVER	37	17 th Edition, February - 2004
34.	KYAN PYI HARBOR	27	17 th Edition, August - 1994	70.	ENTRANCE TO AITSAHARDY RIVER	37	17 th Edition, February - 2004
35.	KATAY KYIN	1206	17 th Edition, August - 1994	71.	HENZE CHONG	46	17 th Edition, April - 2004
36.	PERKAN RIVER ENTRANCE	37	17 th Edition, October - 1996	72.	KALUN CHONG RIVER AND APPROACHES	27	17 th Edition, March - 2005
73.	MUTT TRUK KYIN SA ISLAND AND THAN SHI AIR	36	17 th Edition, March - 2005	73.	ENTRANCE TO HENZE CHONG	27	17 th Edition, August - 2004
74.	HEA HON CHONG AND HON KYIN CHONG	27	17 th Edition, March - 2005	74.	ENTRANCE TO HENZE CHONG	27	17 th Edition, August - 2004
75.	ENTRANCE TO TRANDER RIVER	37	17 th Edition, June - 2003	75.	ENTRANCE TO HENZE CHONG	27	17 th Edition, August - 2004
76.	ENTRANCE TO TRANDER RIVER	37	17 th Edition, June - 2003	76.	ENTRANCE TO HENZE CHONG	27	17 th Edition, August - 2004
77.	KANAW RIVER AND WELA NAGAR AIR	37	17 th Edition, October - 2003	77.	ENTRANCE TO HENZE CHONG	27	17 th Edition, August - 2004
78.	WELA NAGAR AIR (WELA BIT)	37	17 th Edition, October - 2003	78.	ENTRANCE TO HENZE CHONG	27	17 th Edition, August - 2004
79.	ENTRANCE TO LINTA RIVER	27	17 th Edition, October - 2003	79.	ENTRANCE TO HENZE CHONG	27	17 th Edition, August - 2004
80.	LINTA RIVER	27	17 th Edition, November - 2003	80.	ENTRANCE TO HENZE CHONG	27	17 th Edition, August - 2004
81.	KALAN KYIN TO SA HON KYIN	27	17 th Edition, 2004	81.	ENTRANCE TO HENZE CHONG	27	17 th Edition, August - 2004
82.	ENTRANCE TO HENZE CHONG	27	17 th Edition, April - 2004	82.	ENTRANCE TO HENZE CHONG	27	17 th Edition, August - 2004
83.	APPROACHES TO HON KYIN CHONG	27	17 th Edition, April - 2004	83.	ENTRANCE TO HENZE CHONG	27	17 th Edition, August - 2004
84.	SAUKHAN RIVER TO KANAW RIVER	37	17 th Edition, May - 2004	84.	ENTRANCE TO HENZE CHONG	27	17 th Edition, August - 2004
85.	HON KYIN RIVER TO HON KYIN CHONG	27	17 th Edition, May - 2004	85.	ENTRANCE TO HENZE CHONG	27	17 th Edition, August - 2004
86.	HON KYIN RIVER TO HON KYIN CHONG	27	17 th Edition, August - 2004	86.	ENTRANCE TO HENZE CHONG	27	17 th Edition, August - 2004
87.	KANAW RIVER - KYAN PYI AIR	37	17 th Edition, August - 2004	87.	ENTRANCE TO HENZE CHONG	27	17 th Edition, August - 2004
88.	WELA RIVER - THE VALLEY RIVER TO SANDHUR RIVER	27	17 th Edition, August - 2004	88.	ENTRANCE TO HENZE CHONG	27	17 th Edition, August - 2004
89.	HON TANG CHONG TO LAR KANAN CHONG	27	17 th Edition, 2004	89.	ENTRANCE TO HENZE CHONG	27	17 th Edition, August - 2004
90.	HOZEI KYIN TO SA HON KYIN	27	17 th Edition, 2005	90.	ENTRANCE TO HENZE CHONG	27	17 th Edition, August - 2004
91.	KYAN KYAN KYIN TO SA HON KYIN	27	17 th Edition, May - 2007	91.	ENTRANCE TO HENZE CHONG	27	17 th Edition, August - 2004
92.	SAUKHAN RIVER TO HON KYIN CHONG	27	17 th Edition, May - 2007	92.	ENTRANCE TO HENZE CHONG	27	17 th Edition, August - 2004
93.	KYAN KYIN TO SAUKHAN RIVER	27	17 th Edition, May - 2007	93.	ENTRANCE TO HENZE CHONG	27	17 th Edition, August - 2004
94.	LONE SAUKHAN RIVER TO HON KYIN CHONG	27	17 th Edition, May - 2007	94.	ENTRANCE TO HENZE CHONG	27	17 th Edition, August - 2004
95.	KYAN LA TANG TO KYAN KYIN	27	17 th Edition, May - 2007	95.	ENTRANCE TO HENZE CHONG	27	17 th Edition, August - 2004
96.	HON KYIN CHONG RIVER TO HON KYIN CHONG	27	17 th Edition, May - 2007	96.	ENTRANCE TO HENZE CHONG	27	17 th Edition, August - 2004
97.	FALAKA CHONG	27	17 th Edition, May - 2007	97.	ENTRANCE TO HENZE CHONG	27	17 th Edition, August - 2004
98.	PREPARS ISLAND TO LITTLE COV ISLAND	27	17 th Edition, August - 2007	98.	ENTRANCE TO HENZE CHONG	27	17 th Edition, August - 2004
99.	FANCON RIVER AND APPROACHES	46	17 th Edition, September - 2007	99.	ENTRANCE TO HENZE CHONG	27	17 th Edition, August - 2004
100.	PREPARS ISLAND (MGLY) - PARLETS	27	17 th Edition, September - 2007	100.	ENTRANCE TO HENZE CHONG	27	17 th Edition, August - 2004
101.	CHYO ISLAND	17	17 th Edition, September - 2007	101.	ENTRANCE TO HENZE CHONG	27	17 th Edition, August - 2004
102.	SOUTH OF AITSAHARDY RIVER	37	17 th Edition, February - 2009	102.	ENTRANCE TO HENZE CHONG	27	17 th Edition, August - 2004
103.	SOUTH OF HONKYI RIVER	37	17 th Edition, February - 2009	103.	ENTRANCE TO HENZE CHONG	27	17 th Edition, August - 2004
104.	WEST OF THE RIVER AND THE TRANDER RIVER	37	17 th Edition, March - 2009	104.	ENTRANCE TO HENZE CHONG	27	17 th Edition, August - 2004
105.	SOUTH OF PYIN SA LA RIVER AND PYIN SA LA RIVER	37	17 th Edition, March - 2009	105.	ENTRANCE TO HENZE CHONG	27	17 th Edition, August - 2004
106.	NAVAL DOCKYARD TO GLET BETTY	46	17 th Edition, November - 2009	106.	ENTRANCE TO HENZE CHONG	27	17 th Edition, August - 2004
107.	BIRONGA ISLAND	27	17 th Edition, September - 2010	107.	ENTRANCE TO HENZE CHONG	27	17 th Edition, August - 2004

3. MNHC Organization

3.1 Since established in 1952, MNHC was formed by follow divisions-

- (a) Geodetic and Hydrographic Survey Division
- (b) Cartographic Division
- (c) Oceanographic Division
- (d) Navigation and Survey Instrument Repairing Division
- (e) Maritime Safety Information Division
- (f) Administrative Division

3.2 Under administrative control of MNHC, the following three hydrographic survey ships are attached to No(1) Naval Fleet, Yangon, Myanmar-

(a) Coastal and Offshore Hydrographic Survey Ship “Innya”



This vessel came into hydrographic services in 2013 and was fully equipped with hydrographic instruments and systems in late 2013. As being a stalwart survey vessel, it has done successfully many coastal and offshore survey achievements.

(b) Coastal Survey Vessel “807”



This vessel is in hydrographic services since (1962) and till now. The vessel number appears as “807”. Digital survey equipment and systems are installed aboard.

(c) Near Shore Survey Vessel “115”

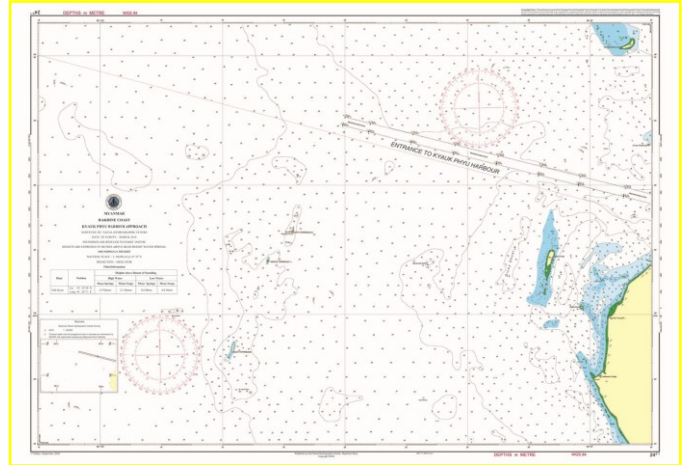
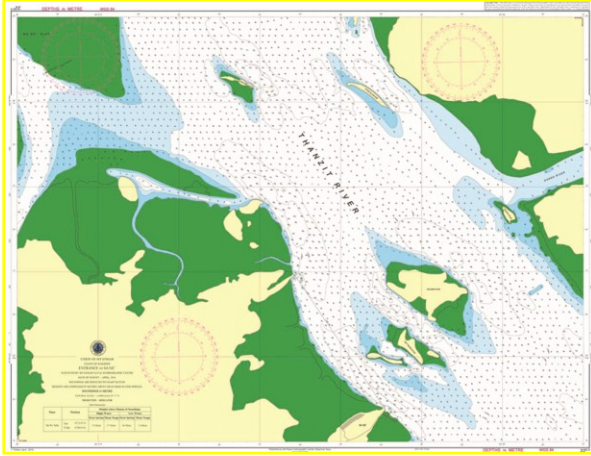


This vessel has just recently joined to hydrographic services in year 2013, also fully equipped with modern hydrographic survey instruments and systems. The mission of this vessel is to conduct hydrographic survey at near shore waters.

4. Nautical Paper Chart Production

4.1 Since established in 1952, MNHC has produced 131 nautical paper charts but most of them are not in commercial used before. Now MNHC focus on safety of navigation purposes not only for navy ships also for commercial uses. MNHC will soon be categorizing nautical paper charts into two groups- Military Purposes and Commercial Uses, then those appear as commercial usage nautical paper charts will be distributed to various uses of mariners.

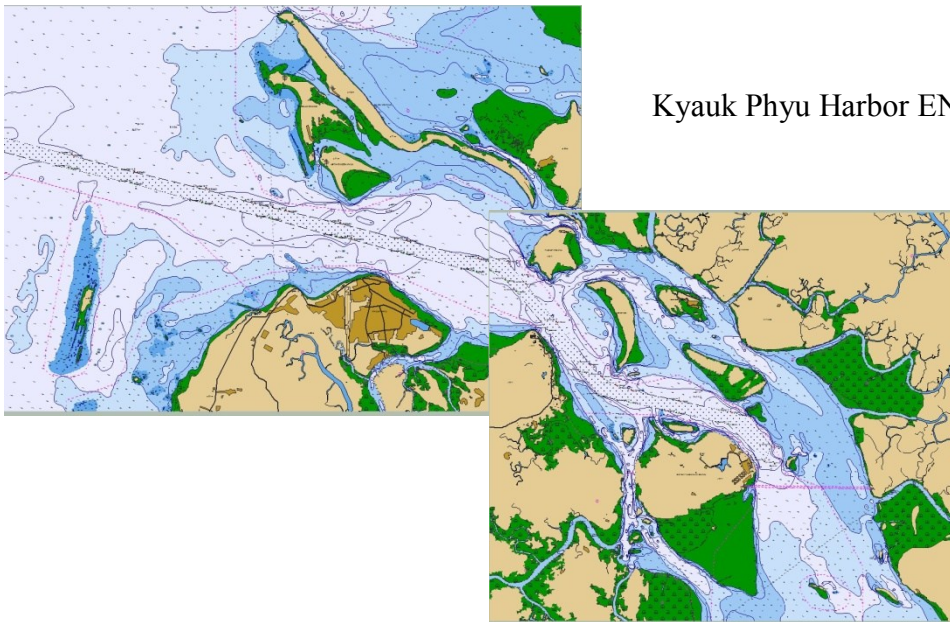
4.2 In 2016, MNHC has been done surveyed approach to Kyauk Phyu Harbors’ and those two paper charts are already published and released.



5. ENC Production

5.1 MNHC efforts to produce ENC's which reflect from some existing paper charts which are of country's important navigable waters and major harbours. The first MNHC's two ENC's cells of Yangon River have been released through UKHO VAR in the end of year 2014.

5.2 Recently In this year, Kyauk Phyu Harbor ENC's also have been released to commercial. So far MNHC had released its four ENC's cells as per priority. To accelerate ENC production, MNHC still requires more trainings and experiences in the field of ENC production, Distribution and Maintenance.



Kyauk Phyu Harbor ENC's

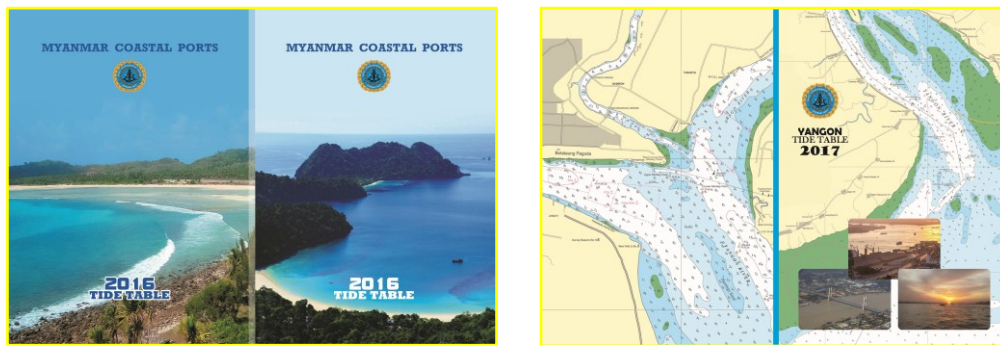
6. Production System

6.1 MNHC use the following systems for paper charts and ENC production-

- (a) Caris GIS
- (b) Caris S-57 Composer
- (c) Dkart Office
- (d) Dkart Publisher

7. MNHC Annual Tide Table

7.1 MNHC annually promulgates tide table for Myanmar Major and Minor Ports in country wide.



8. Maritime Safety Information

8.1 MNHC shares the maritime safety information in the form of Notices to Mariners which are promulgated by email. MNHC's Notices to Mariners are later promulgated on NAV AREA WARNING issued by Coordinators and also this information is given to other Foreign HOs. MNHC is free from the liability of the Data from NTMs which is reused on the products of other HOs unless the agreement has been established for the entitlement. MNHC pays attention to promulgate precise information which is critically important for safety of navigation in the region.

8.2 Total (46) Notices to Mariners were promulgated in 2016 and so far (26) NTMs have been promulgated in this year 2017. The followings are the contact emails for MNHC's Maritime Safety Information concerns-

ltcdryehtuntoo.mnhc@gmail.com

yehtunoo@m-n-h-c.com

zawzawlat@m-n-h-c.com

slt.hsumonoo@gmail.com

soenyunthaw52@gmail.com

hmintunmyanmar@gmail.com

8.3 MNHC is also working together with Maritime Rescue Coordinating Centre-MRCC (Ayeyarwaddy) which is operating under Myanmar Navy. MRCC is also one of the focal point for Maritime Safety Information which is in the network of Regional Navies's MSI concerns. AIS with GMDSS systems are monitoring the regional seas and the information is shared between Regional Navies. The following focal points are to be contactable-

mrcc.ayeyarwaddy@gmail.com

9. Survey Activities

9.1 As it is one of the MNHC's mission, for covering the entire national water area we have been conducting hydrographic surveys in important water area and annual resurveys in the critical dynamic waterway.

9.2 In this year MNHC has been done hydrographic survey in the area of Bassin River Entrance in the Delta Region.



10. Capacity Building

10.1 MNHC is annually receiving CAT B hydrographic course and occasionally CAT A course from regional coordinator, India. MNHC working team has joined ENC production workshop at NHO, India. MNHC also received the following NIOHC's CB funding courses/workshop since last meeting-

- (a) Caris HIPS SIPS Training -Yangon, Myanmar
- (b) Electronic Navigational Chart Quality Assurance Workshop- Bangkok, Thailand



10.2 As approaching to ENC production, it is found that MNHC still requires more Cartographic and ENC production, ENC distribution trainings OR Workshops.

10.3 Annual Hydrographic Trainings at basic level for Myanmar Naval Officers are run at Naval Training Command Headquarters, Thanlyin, Myanmar as local training courses.

11. Conclusion

11.1 In year of 2016-2017, MNHC conducted hydrographic surveys at the important major ports, updated nautical charts. ENC production progress has also been positively and moved forward to a proper stage. MNHC cooperated with NAV AREA COORDINATOR and Foreign HOs for MSI concerns. It also thankfully received training courses, workshop opportunity from North Indian Ocean Hydrographic Commission and this fruitful opportunity given by member States are thankful. In the conclusion, the hydrographic activities of MNHC are moving ahead properly and 2016-2017 is recorded as a successful year of MNHC.

Yangon, July 2017

MNHC CONTACT LIST

Commodore Min Thein Tint

Commanding Officer of MNHC

Mintheintint.hydro2010@gmail.com, mintheintint@m-n-h-c.com

Commander Ye Lwin

Deputy Commanding Officer of MNHC

yelwin@m-n-h-c.com,

cdryyelwin@gmail.com

Lieutenant Commander Ye HtunOo

Head of Geodetic and Hydrographic Survey Division, MNHC

In-charge of ENC production

ltyehtuntoo.mnhc@gmail.com,

yehtunoo@m-n-h-c.com

Lieutenant HlaingMinTun

Deputy commander of Geodetic and Hydrographic Survey Division, MNHC

hmintunmyanmar@gmail.com

Lieutenant SoeNyunt Thaw

In-Charge of Maritime Safety Information

soenyuntthaw52@gmail.com,

Myanmar Naval Hydrographic Centre-MNHC

Myanmar Navy

Po-Box 511, Yangon, Myanmar

Ph/Fax: +953131669