



AUS
SEABED

Australia and AusSeabed 2021-2022 Update





Australian Government

Department of Agriculture, Water and the Environment

Australian Antarctic Division



Australian Government

Geoscience Australia



Australian Government



Australian Government

Parks Australia



Australian Marine Parks



Australian Government

Bureau of Meteorology



Australian Government

Australian Maritime Safety Authority



WESTERN AUSTRALIAN
MARINE SCIENCE
INSTITUTION



THE UNIVERSITY OF
WESTERN
AUSTRALIA



Department of Transport



GUARDIAN
GEOMATICS



Curtin University



AUS
SEABED



NORTHERN
TERRITORY
GOVERNMENT



Queensland
Government



Government of
South Australia



NSW
GOVERNMENT



VICTORIA
State Government
Environment,
Land, Water
and Planning



DEAKIN
UNIVERSITY



SOOS
SOUTHERN OCEAN OBSERVING SYSTEM



UNIVERSITY OF
TASMANIA



IMAS
INSTITUTE FOR MARINE
& ANTARCTIC STUDIES

iXblue



Australian Government

Great Barrier Reef
Marine Park Authority



JAMES COOK
UNIVERSITY
AUSTRALIA



acoustic imaging



THE UNIVERSITY OF
SYDNEY



EGS



Hydrographic &
Cadastral Survey

FRONTIER
S I



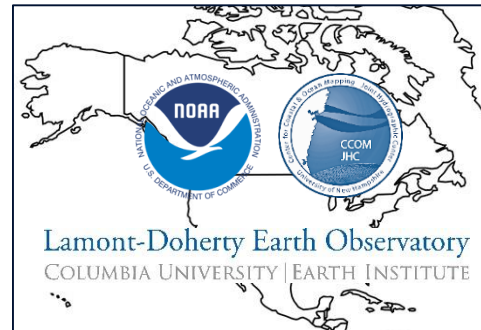
NIWA
Taihoro Nukurangi



Land Information
New Zealand
Toitū te whenua



IIC TECHNOLOGIES



Australian Research Data Commons



National Environmental Science Programme



Integrated Marine
Observing System



COOPERATIVE RESEARCH CENTRE

VISION

Seabed mapping products within the Australian region are readily and openly available, widely understood, and easily used. The Australian seabed information ecosystem delivers maximum benefits to Australian Governments and users, supporting sustainable use of the marine environment and growth of the Blue Economy

MISSION

Improve the awareness, coverage, quality, accessibility and usability of seabed mapping products in the Australian region through coordination, collaboration, and innovation



Coverage

Seabed data coverage in the Australian region provides maximum benefit to users

Legacy coverage is known, described and accessible

New coverage is shaped by stakeholders

Acquisition is prioritised and coordinated

Data is collected to quality standards to be used many times

Innovation and emerging technologies are embraced



ROLE

Connect stakeholders across sectors, and support complementary initiatives

Liberate seabed data and products for users

Guide the sector towards quality standards and consistency

Raise awareness of the importance of seabed mapping in the wider community

Products

All seabed mapping data and products in the Australian region are guided by FAIR principles and meet the needs of users

Federated platform adopted as the source of seabed data and products

Curated, standardised and of consistent quality

Fit-for purpose and understood

Connected to community initiatives



AUS
SEABED

Our Strategy

Working towards a mapped and accessible Australian seabed



Awareness

Seabed mapping and AusSeabed is widely understood, valued and used across Australian Governments and the community

Inclusive, diverse, connected and informed community

Engaged with First Nations Australians

Data, tools, standards, and products are widely used

Products are end user focused

Education and training opportunities are encouraged

OUTCOMES

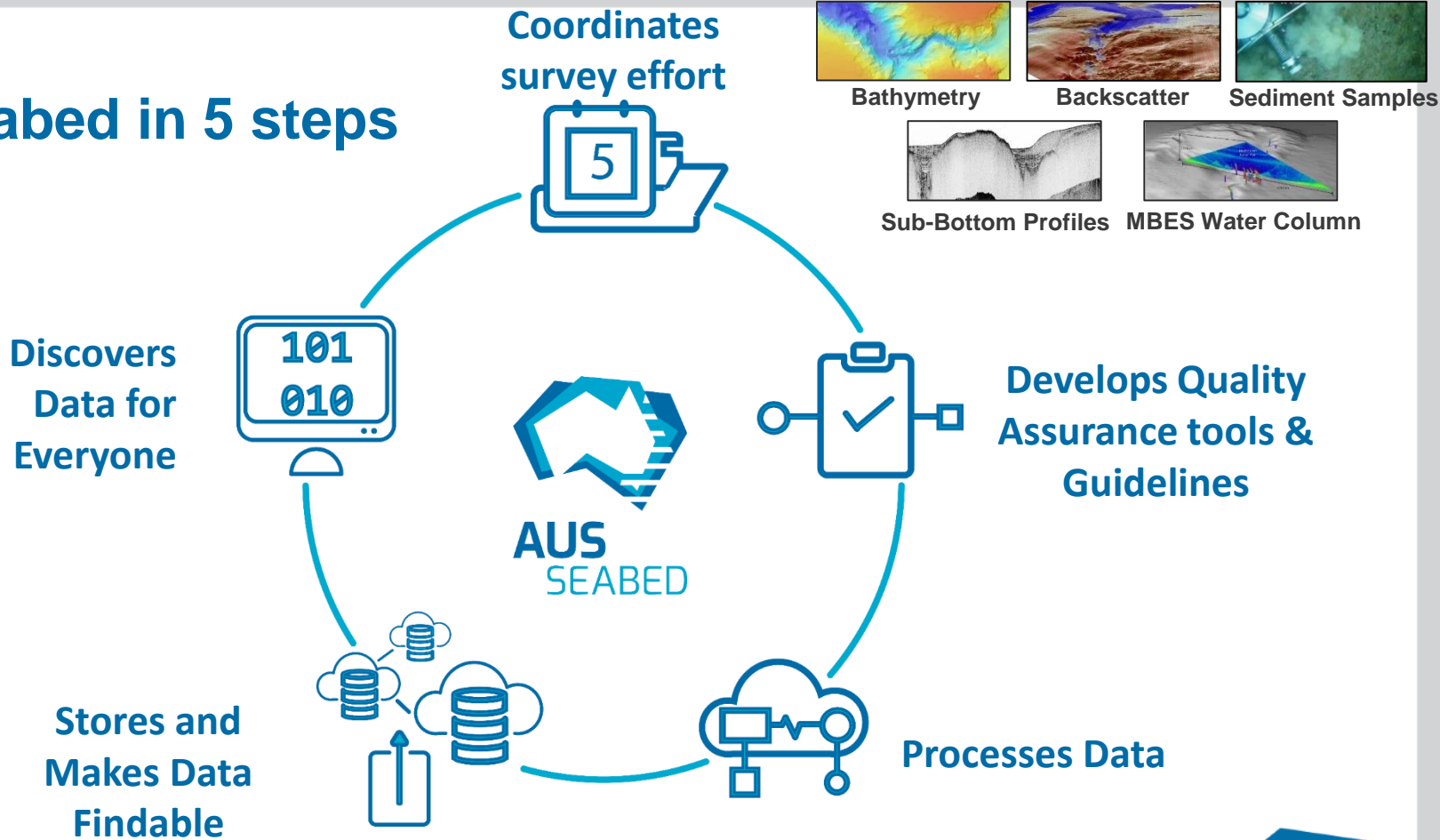
Sustainable and supported federated platform adopted by users

Coordinated seabed mapping activities across the AusSeabed community

Improved quality of data acquisition through the adoption of common standards and tools

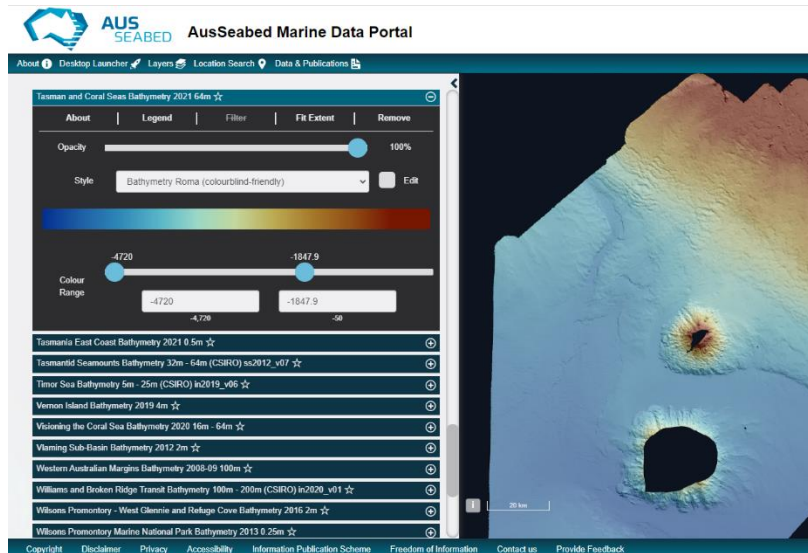
Seabed mapping products support improved decision-making within Australian Governments and the community

AusSeabed in 5 steps

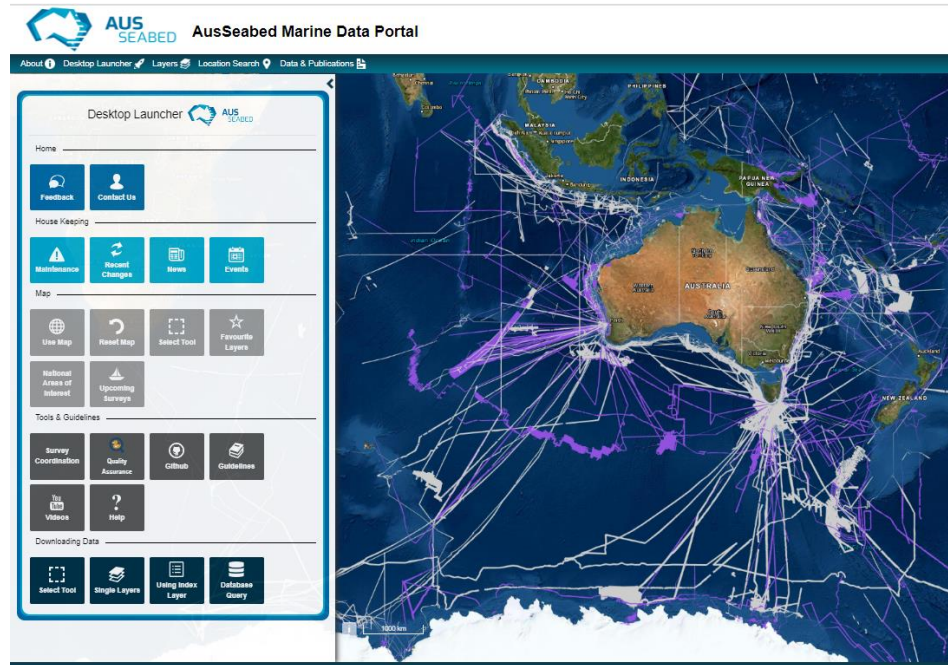


Annual Highlights Report

An enhanced user experience for the Data Portal



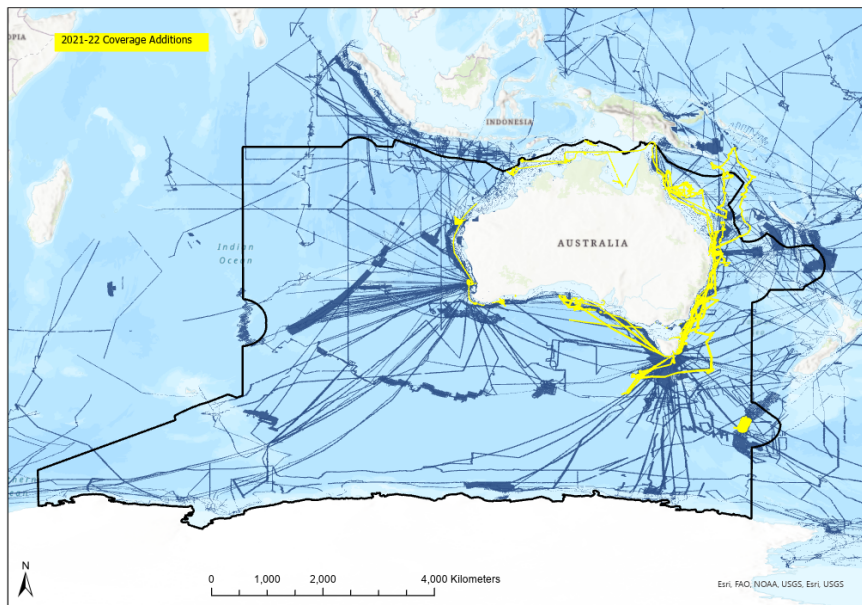
Improve the curation and delivery of seabed mapping data



Annual Highlights Report

Improve the curation and delivery of seabed mapping data

38 new published datasets in Portal,
covering 578,675 km²

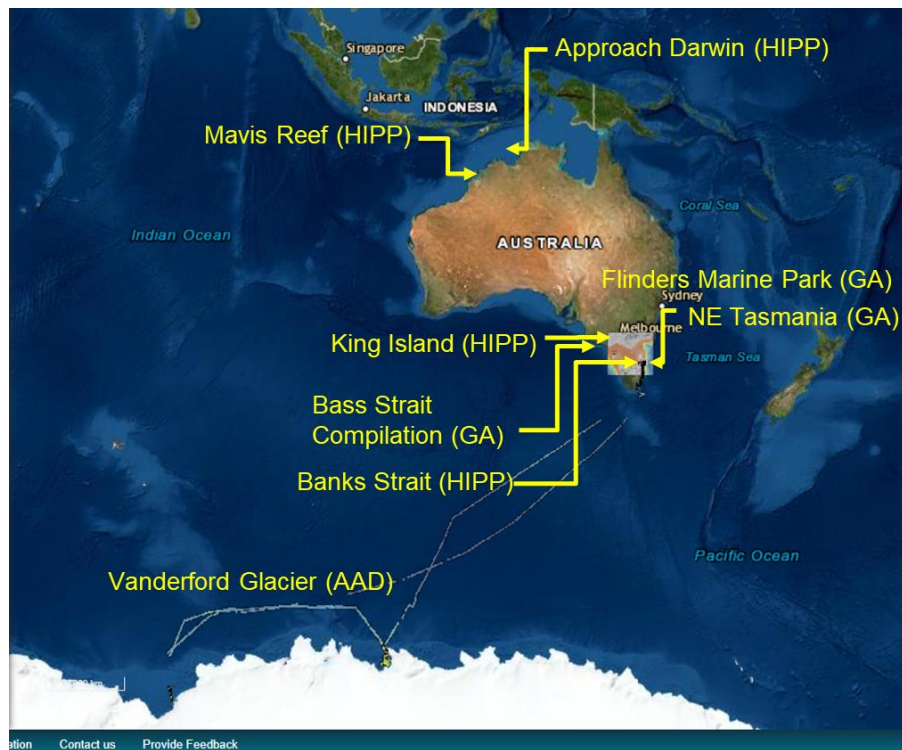


Acquisition surveys

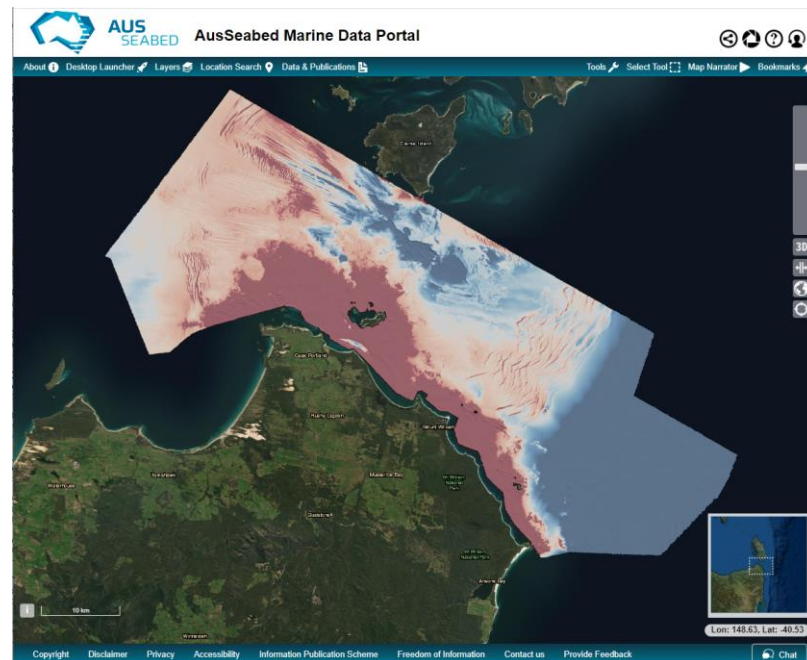


Annual Highlights Report

Improve the curation and delivery of seabed mapping data

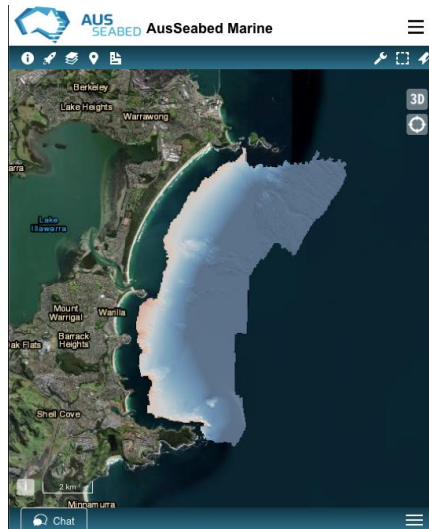


Hydroscheme Industry Partnership Program surveying efforts

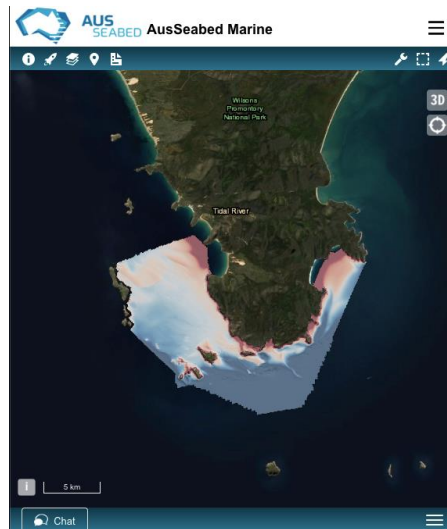


Annual Highlights Report

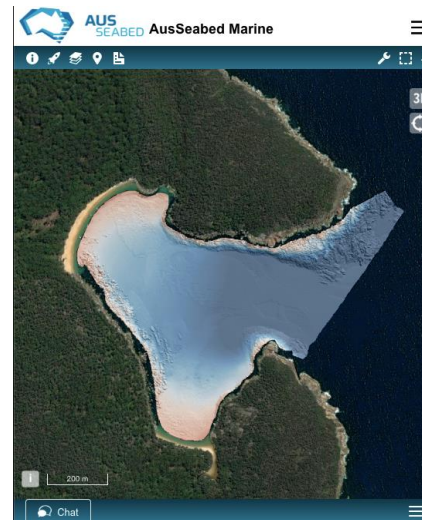
Improve the curation and delivery of seabed mapping data



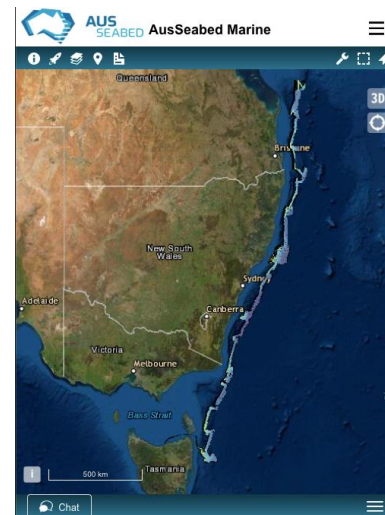
Shellharbour



Wilsons Promontory
Marine Park

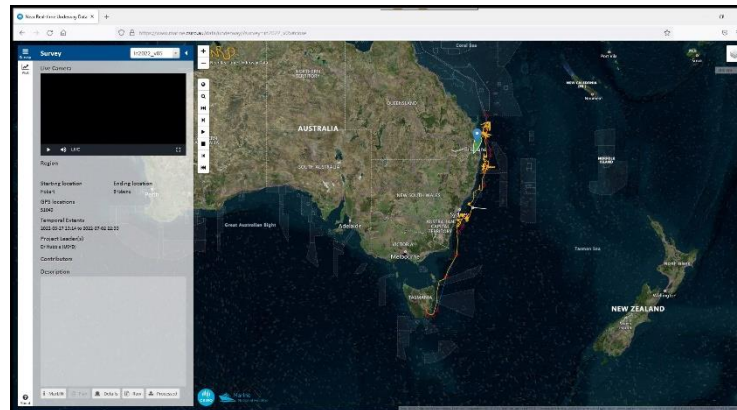
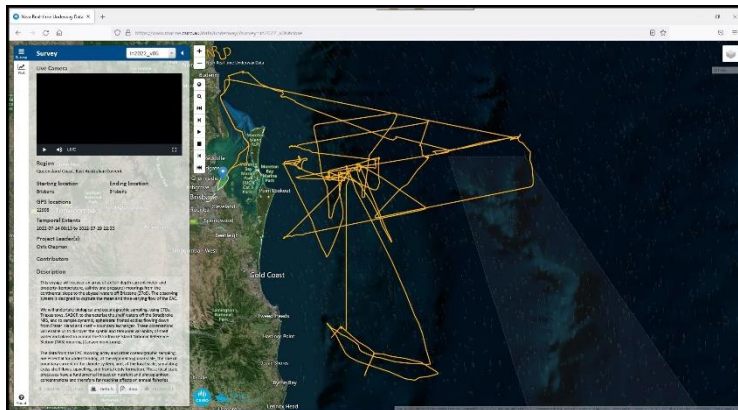
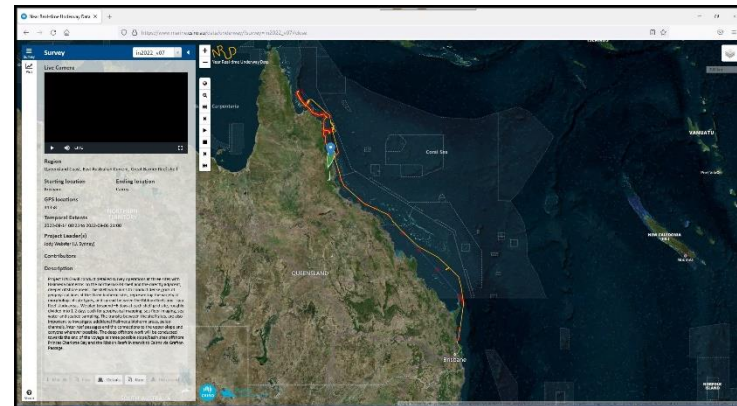
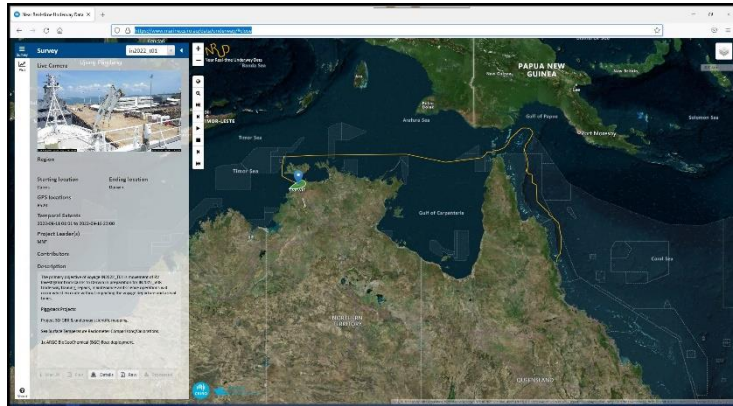


Refuge Cove



East Continental
Margin

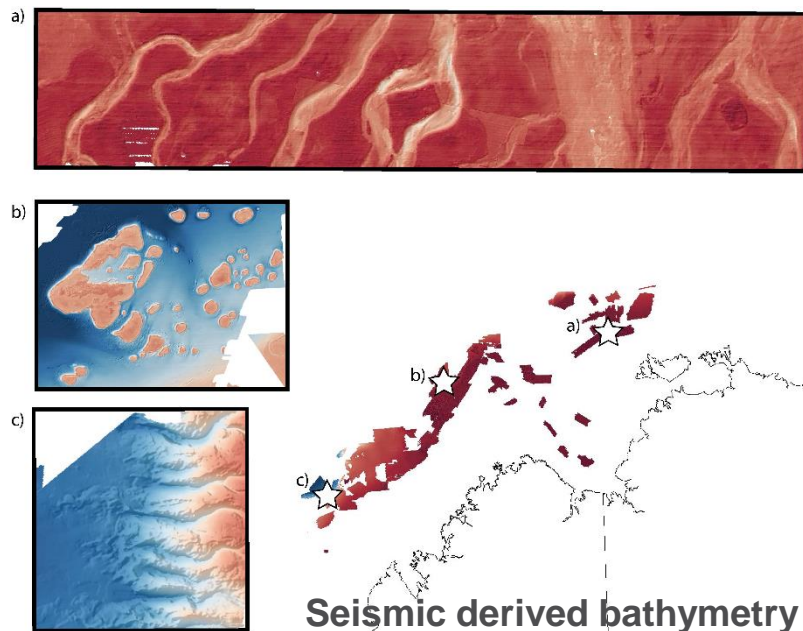
Recent acquisition: Marine National Facility -CSIRO



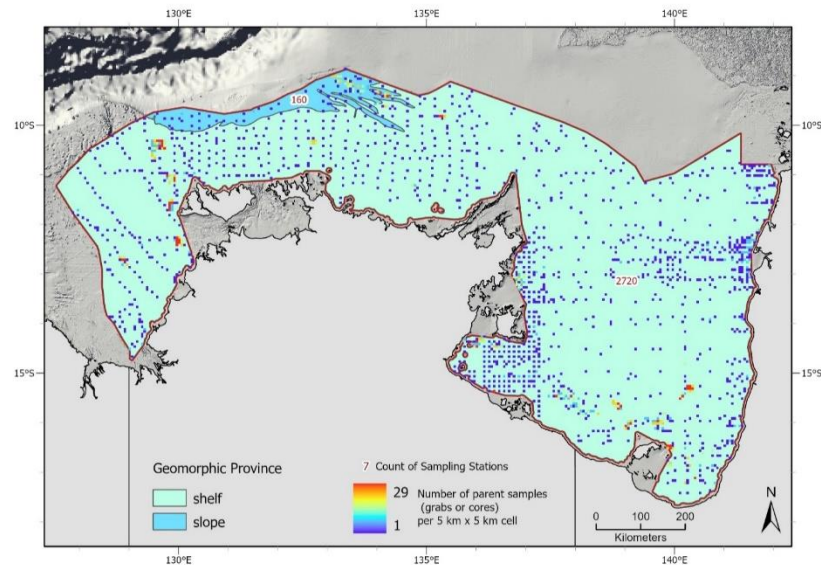
Annual Highlights Report

Improve the curation and delivery of seabed mapping data

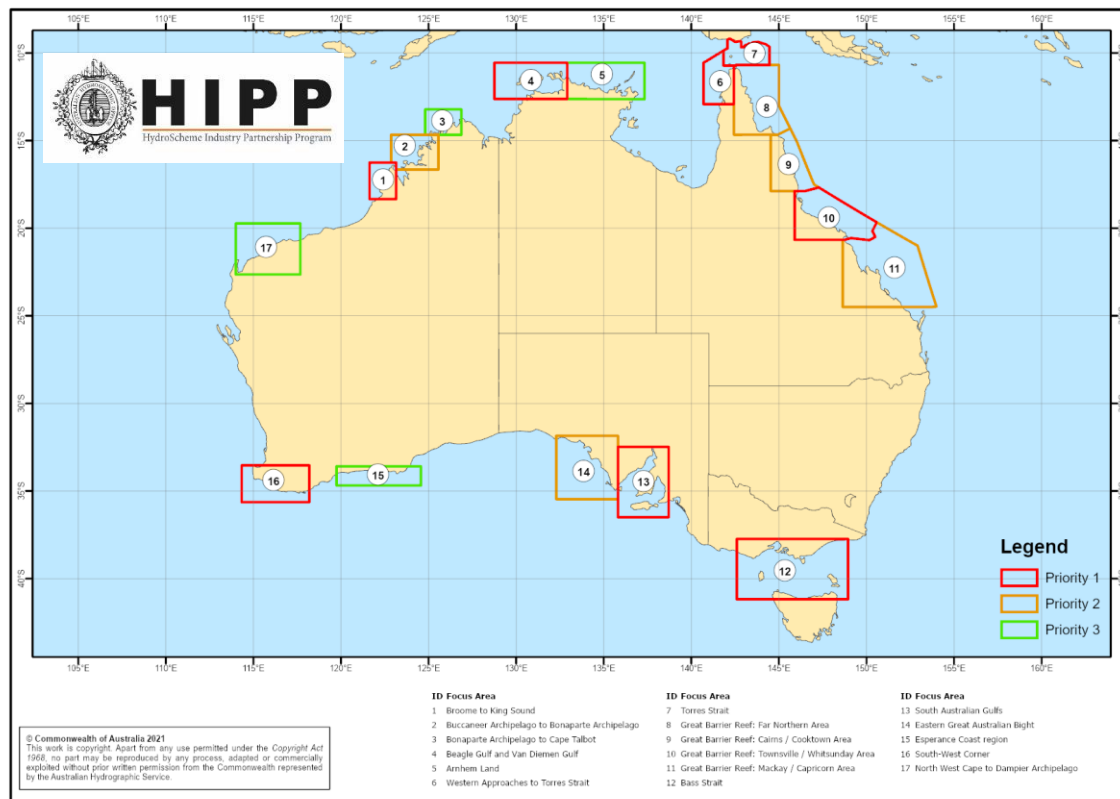
More community data is coming to AusSeabed



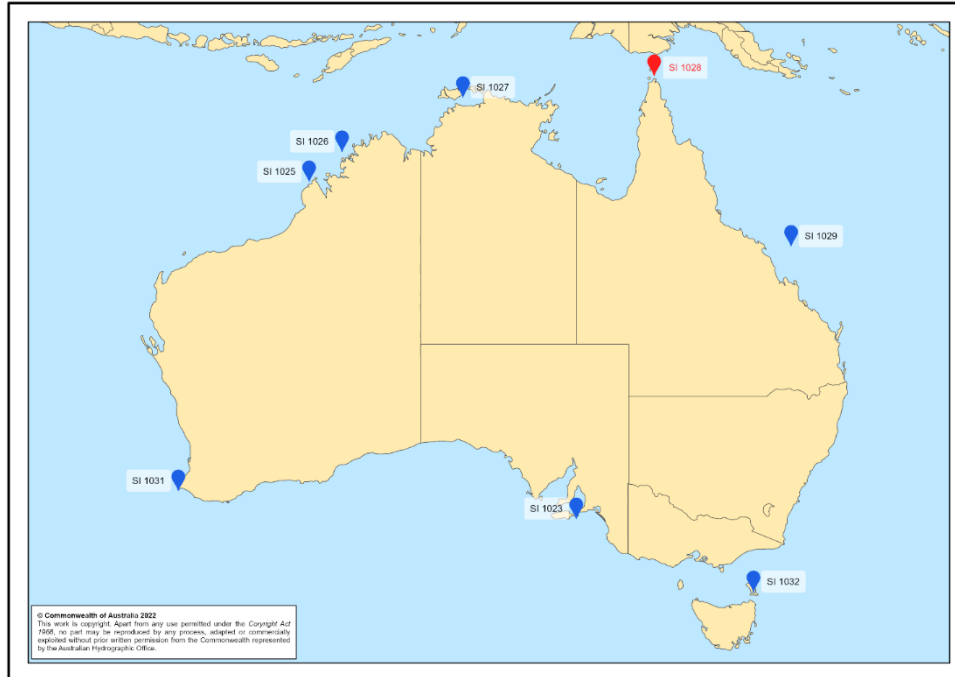
Coverage of Marine Sediment (MARS) database revealed



New acquisition: Proposed HIPP Focus Areas 2022



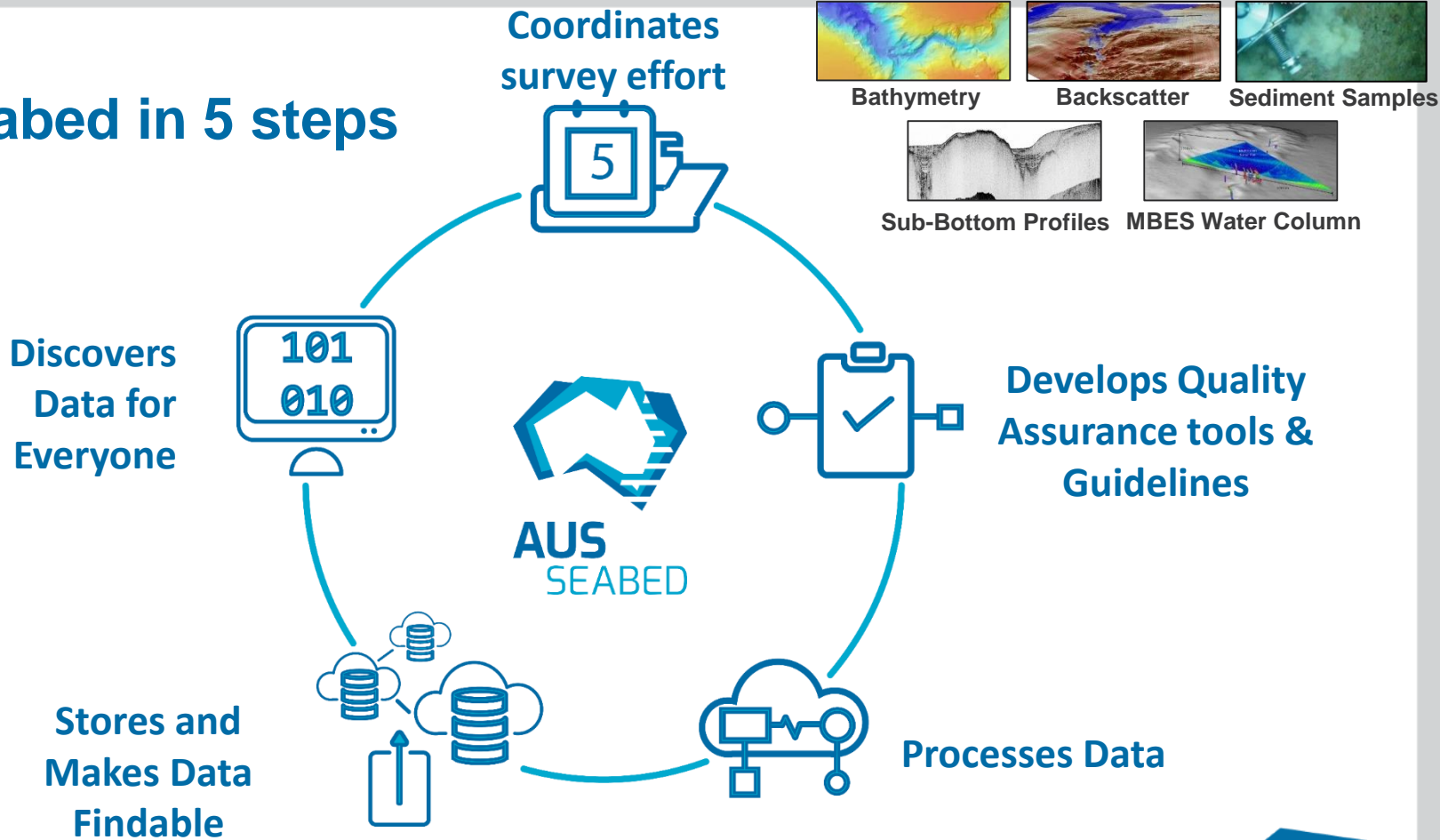
New acquisition: HydroScheme 2022



8 released

- 2 underway
- 7 in-contract
- 1 withdrawn

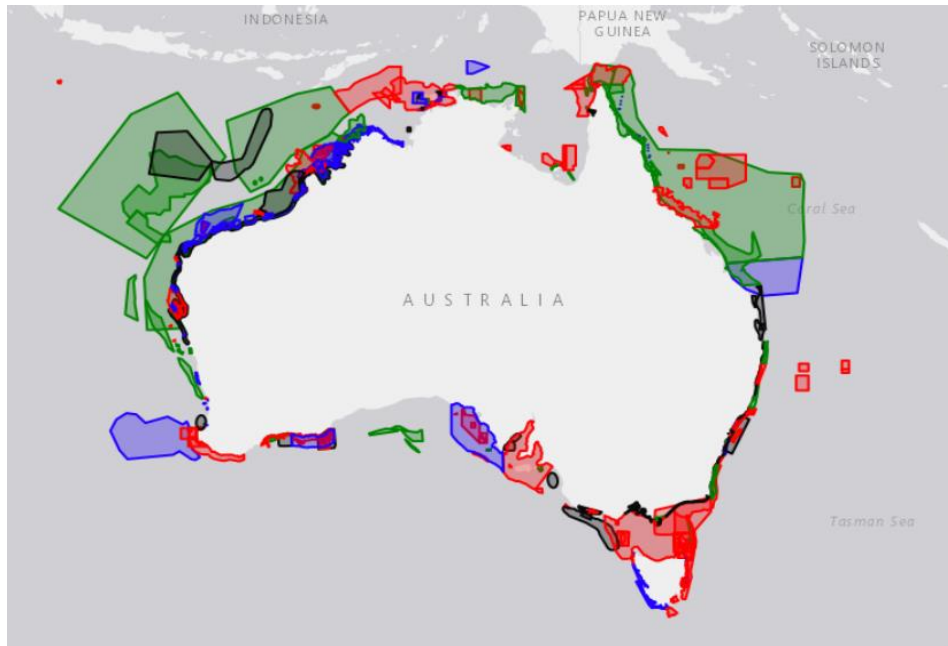
AusSeabed in 5 steps



Annual Highlights Report

Nationally coordinate seabed mapping activities and objectives

Visible stakeholder priorities and data sharing are enabling coordination
Areas of Interest for mapping and characterising the seabed



350 areas of interest

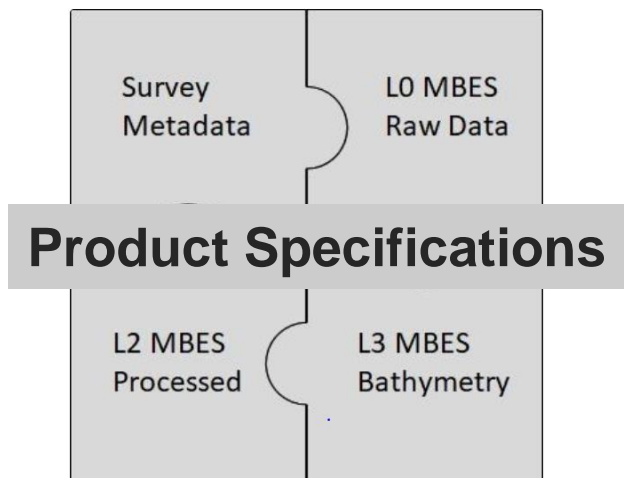
67 submissions

25 organisations

Annual Highlights Report

Improve the standards and quality related to seabed mapping procedures and data management

AusSeabed tools, guidelines and standards will help streamline data contributions



<https://asbdatamanagement.atlassian.net/wiki/spaces/AF/pages/946176043/Landing+Page+++Product+Specifications>

Guidelines

MBES

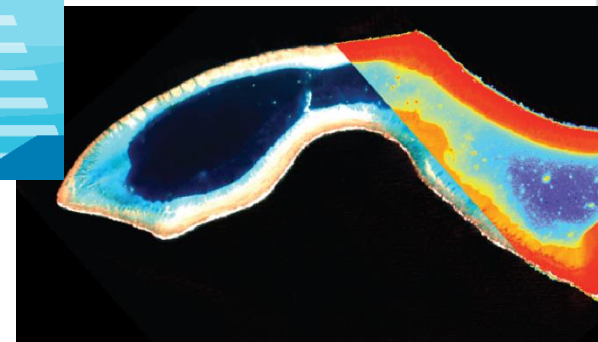


1186 downloads

517 users

6 new citations

SDB



Annual Highlights Report

Improve the standards and quality related to seabed mapping procedures and data management



551 total downloads

141 downloads (ver.1.0.6)

20 users/orgs

Quality Assurance (QAX)

- **V1 release** in June 2021
- Raw data (MATE)
- Grid/Surfaces check (Mbgrid)
- **V2 being** scoped
- Focused on usability for AusSeabed data management and HIPP survey delivery

Collection & Archive Metadata Submission Service

Improve the curation and delivery of seabed mapping data

sergi

Cancel

1

2

3

Next >

Data Submission

Acquisition (General)

Acquisition (Details)

Acquisition (Citation)

Platform Configuration

Data Levels

Authority to publish

Summarise

General

User
SERGI

Organization
Sample organization

Current Date
20-OCT-2022

Data Collections or Data Product Families, a high level categorisation of the data collected during the programme. This will likely have multiple types, add additional rows for each unique value.

Project Title

Project Code

Data availability date
10/19/2022

Survey/Dataset Title

The ID assigned to the survey by the Collecting organisation

Data Collections or Data Product Families, a high level categorisation of the data collected during the programme. This will likely have multiple types, add additional rows for each unique value.

Comments

Narrative summary of the survey

1. Visible workflow to progress through data entry
2. Content structure is subject matter agnostic (cater for future data types)
3. Will integrate with AusSeabed Single Sign on (SSO)

Screen Design Only



AUS
SEABED

Further information or to Provide Feedback/Ideas

Web: www.ausseabed.gov.au

Email: ausseabed@ga.gov.au