

THE NIPPON FOUNDATION-GEBCO

# SEABED 2030

Update for SCUFN35

Kevin Mackay  
Head, South and West Pacific Data Center

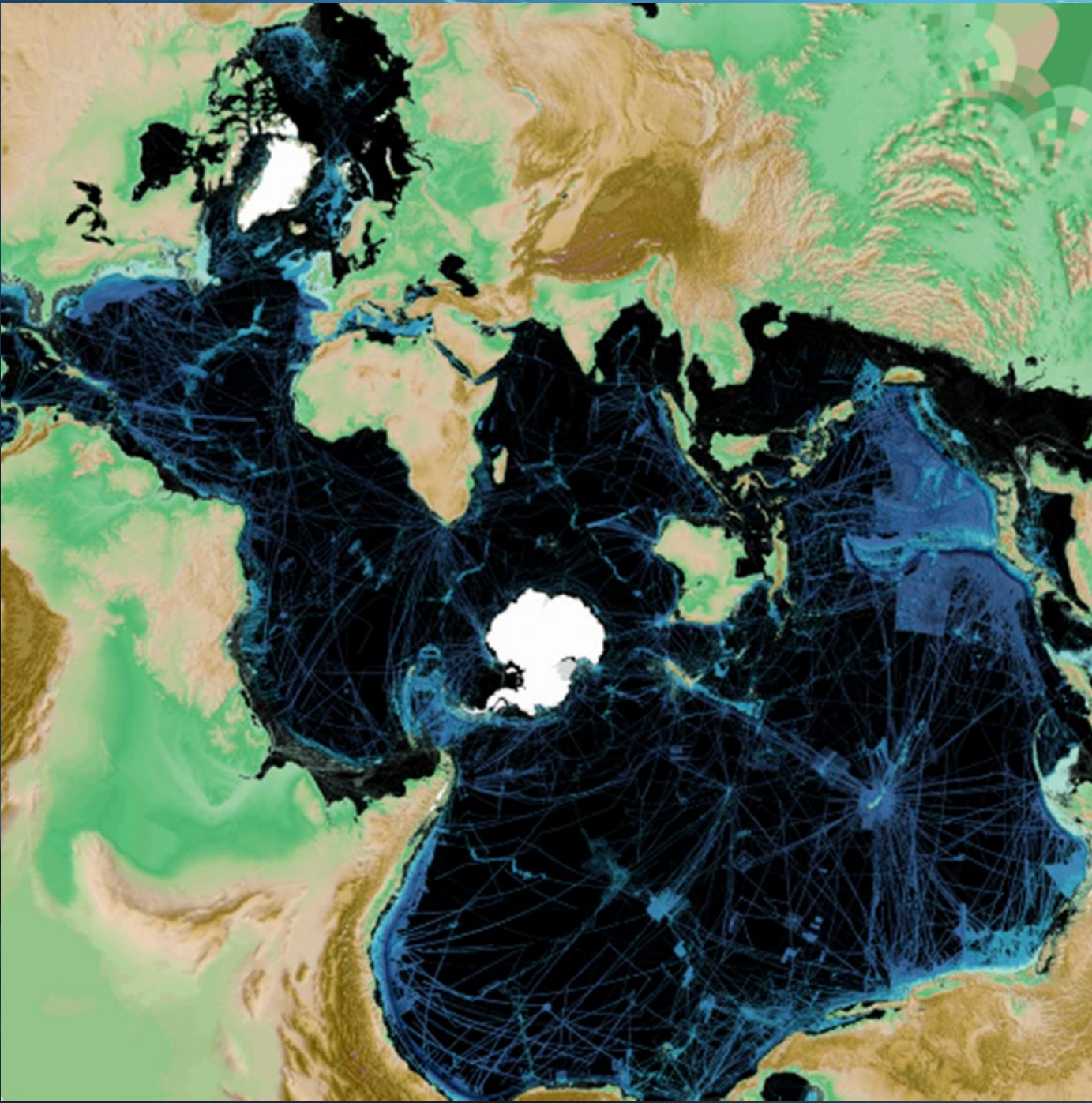
17 March 2022



International  
Hydrographic  
Organization







*It really is .....*

# Our One Ocean!

*Seabed 2030 Vision:*

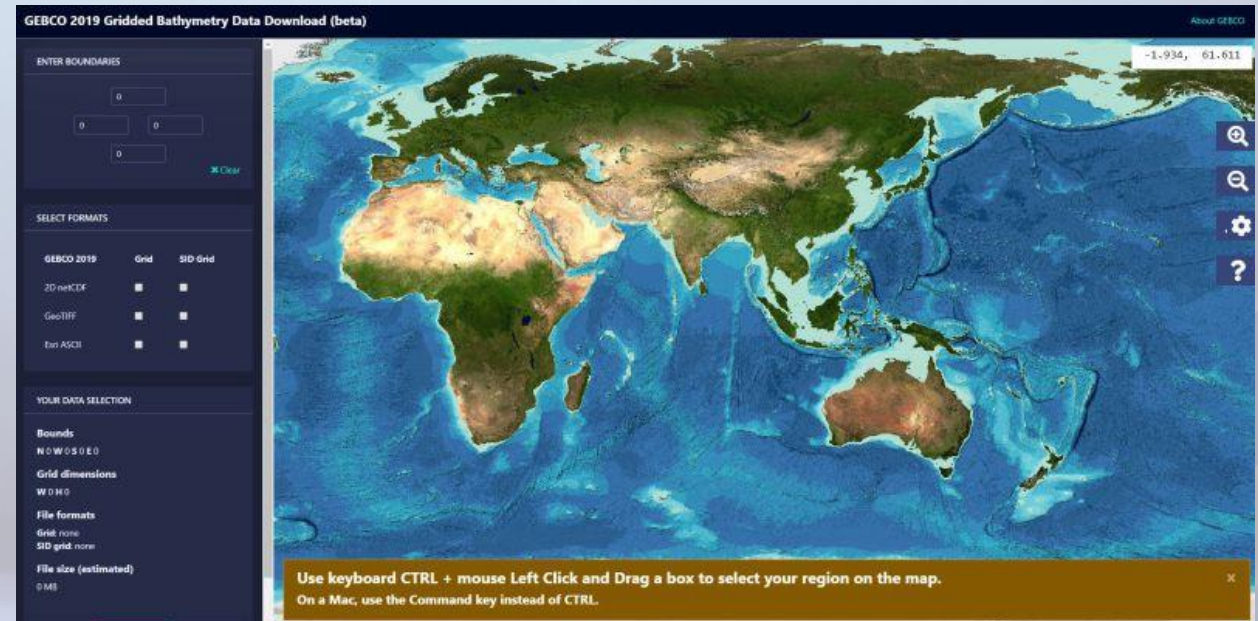
**100% of our Ocean Floor  
mapped by 2030**





# GEBCO Gridded Bathymetry Data

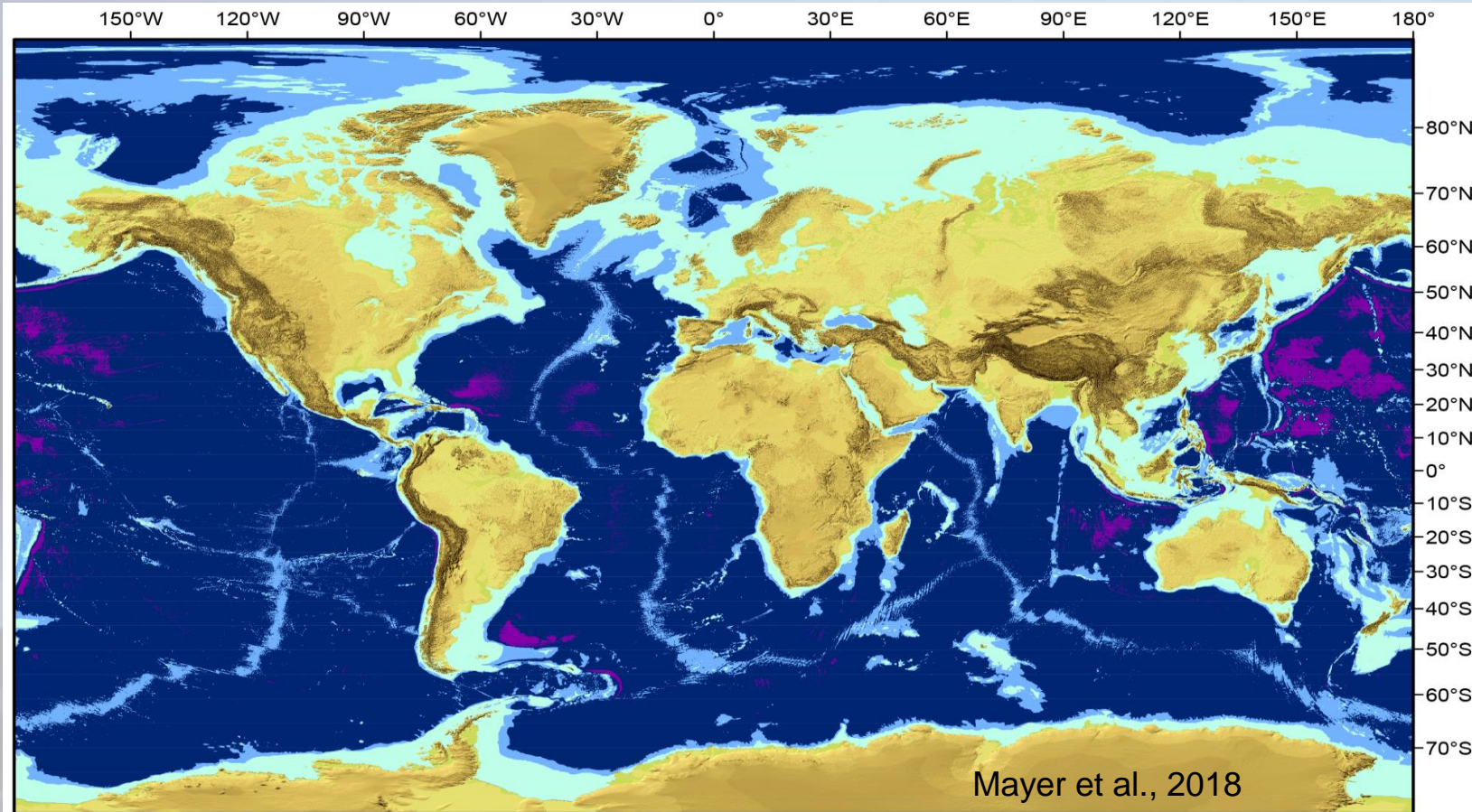
- The GEBCO\_2021 grid, is a global terrain model for ocean and land at 15 arc-second (~480 m) intervals.
- It is accompanied by a Type Identifier (TID) Grid that gives information on the types of source data that the GEBCO\_2021 Grid is based
- Ultimately to move to a variable resolution grid by 2030.



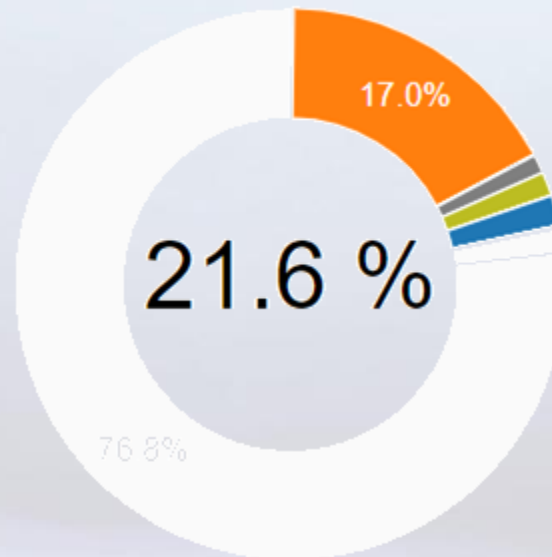


# What does "100% mapped mean?"

## *Depth-dependent resolution goals*



# Global Coverage as of Oct 2021



- Singlebeam
- Multibeam
- Seismic
- Isolated sounding
- ENC sounding
- Lidar
- Depth measured by optical light sensor
- Combination of direct measurement methods
- Pre-generated grid
- Digital bathymetric contours from charts
- Bathymetric sounding
- Predicted based on helicopter/flight-derived gravity data
- Depth estimated by calculating the draft of a grounded iceberg using satellite-derived freeboard measurement
- Unknown source
- Steering points
- Land (negative topography)
- Upcoming, processing, (not included in total)
- Interpolated based on a computer algorithm (not included in total)
- Grid including interpolated (not included in total)
- No data



# Call for data sharing to SCUFN

## Delivered to IHO DCDB

- China (SCUFN32)
- Brazil (SCUFN32)

## Delivered to Seabed 2030

- AWI
- New Zealand
- Caladan



# Parting Words

Seabed 2030 allows nations and other entities to make a cost-effective contribution to:

- ✓ UN General Assembly Resolution A/RES/72/73
- ✓ UN Ocean Decade activities
- ✓ SDG 14
- ✓ completing the GEBCO Ocean Map,
- ✓ producing the ‘comprehensive digital atlas of the ocean’



Thank you all for listening and thank you also for your support!



<https://seabed2030.org>

[enquiries@seabed2030.org](mailto:enquiries@seabed2030.org)