

IHO Hydrographic Committee on Antarctica (HCA)
15th Meeting, Niteroi, Brazil 26 - 28 June 2018

REPORT BY THE NAVAL HYDROGRAPHIC SERVICE



**MINISTERIO DE DEFENSA
SERVICIO DE HIDROGRAFIA NAVAL**

**Tel.: (54-11) 4301-0061/67
Fax.: (54-11) 4301-3883
Av. Montes de Oca 2124
www.hidro.gob.ar
(C1270ABV) Buenos Aires
REPUBLICA ARGENTINA**

1- HYDROGRAPHIC OFFICE

MINISTERIO DE DEFENSA
SERVICIO DE HIDROGRAFÍA NAVAL
www.hidro.gob.ar

2- SURVEYS

2.1

2.1.1. INT 9101 – Península Trinidad – Base Esperanza. 5 (five) WGS84 points and coast line were measured in Península Trinidad – Base Esperanza for the realization of INT 9101.

2.1.2. INT 9111 – Bahía Margarita – Base San Martín. 6 (six) WGS84 points and coast line were measured in Península Trinidad – Base Esperanza for the actualization of INT 9111.

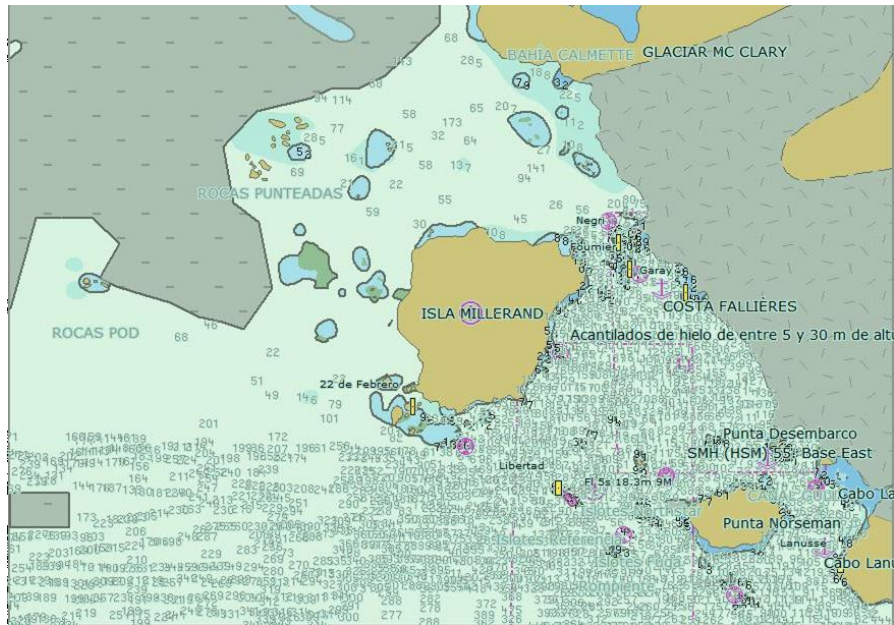
2.1.3 INT9140 – Islas Orcadas del Sur. Survey and processing of bathymetric data for the realization of INT 9140.



3- NEW CHARTS & UPDATE

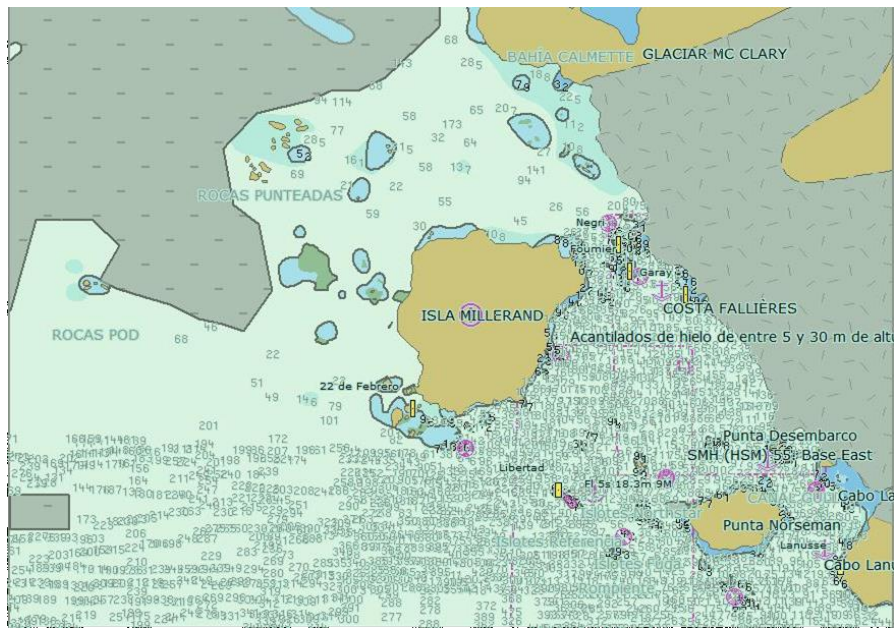
3.1 New Chart

3.1.1 INT9111 “Península Antártica. Bahía Margarita. De Cabo Calmette a Cabo Lanusse”, Published in 01-05-2017



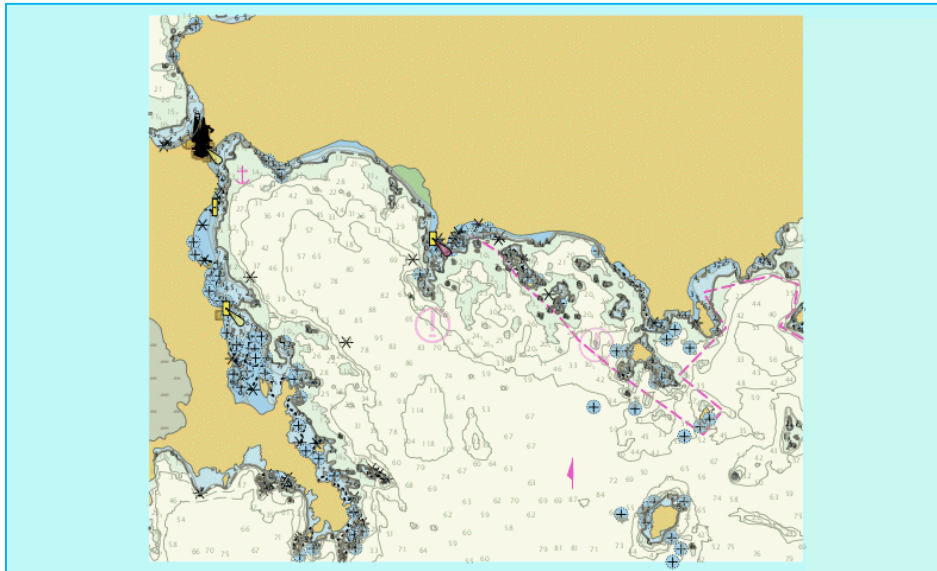
INT9111 “Península Antártica. Bahía Margarita. De Cabo Calmette a Cabo Lanusse”	Boundaries	Scales
	North Latitude	68°04'S
	South Latitude	68°14'S
	West Longitude	67°33'W
	East Longitude	66°55'W
		1:25.000

3.1.2 AR407910 “Península Antártica. Bahía Margarita. De Cabo Calmette a Cabo Lanusse”, Published in 18-05-2018



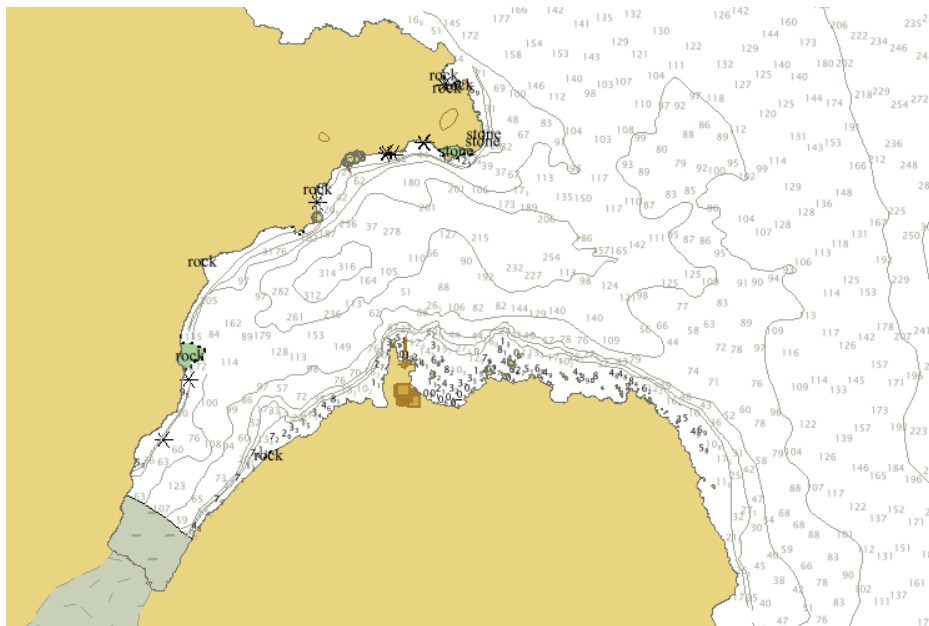
AR407910 “Península Antártica. Bahía Margarita. De Cabo Calmette a Cabo Lanusse”	Boundaries	Scales
	North Latitude	68°04.0'S
	South Latitude	68°14'S
	West Longitude	67°33'W
	East Longitude	66°55'W
		1:22.000

3.1.3 AR506510 “Bahía Scotia”, Published in 12-12-2017



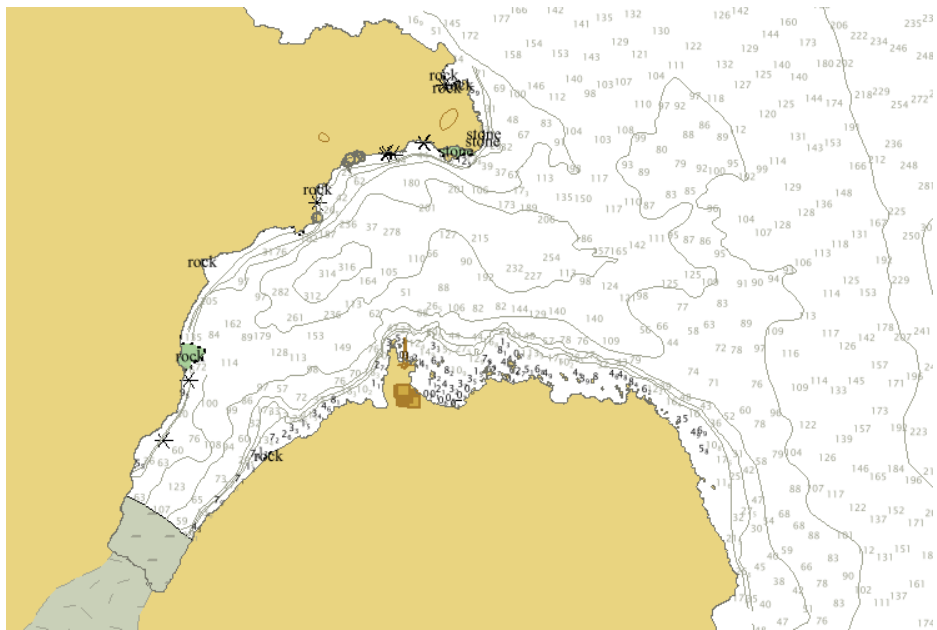
AR506510 “Bahía Scotia”		Boundaries	Scales
	North Latitude	60°43.40’S	1:12.000
	South Latitude	60°47.10’S	
	West Longitude	44°45.00’W	
East Longitude	44°36.00’W		

3.1.4 INT9101 “Península Trinidad - Base Esperanza”, in production. Expected to be finished during December 2018.



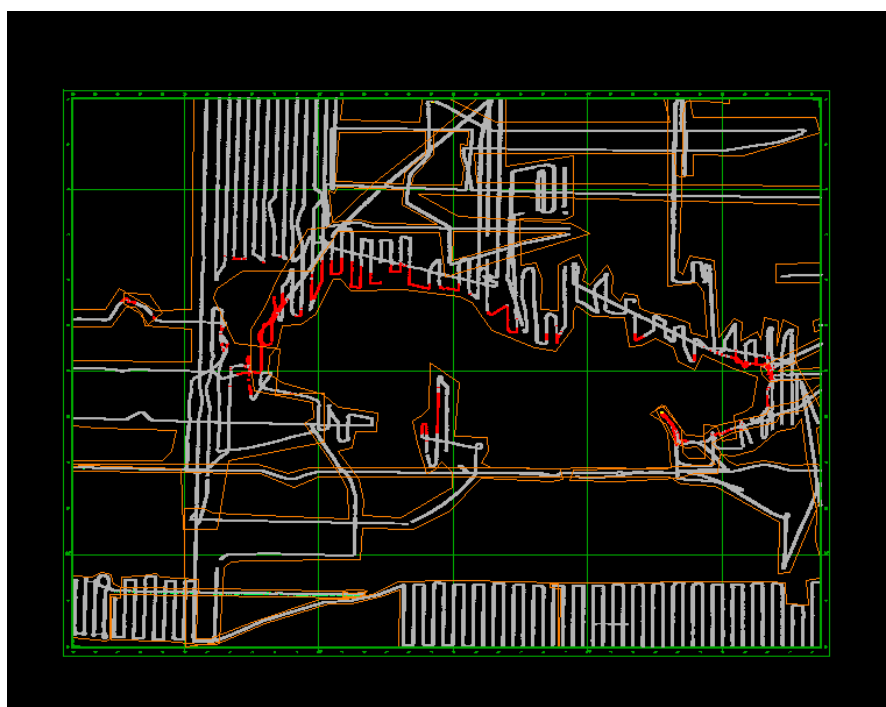
INT9101 “Península Trinidad - Base Esperanza”		Boundaries(*)	Scales
	North Latitude	63°21.36’S	1:8.000
	South Latitude	63°25.30’S	
	West Longitude	57°05.00’W	
East Longitude	56°53.00’W		

3.1.5 AR407570 “Península Trinidad - Base Esperanza”, in production. Expected to be submitted to IC-ENC during December 2018.



AR407570 “Península Trinidad - Base Esperanza”		Boundaries(*)	Scales
	North Latitude	63°21.36’S	1:8.000
	South Latitude	63°25.30’S	
	West Longitude	57°05.00’W	
	East Longitude	56°53.00’W	

3.1.6 INT9140 “Islas Orcadas del Sur”, in production. Expected to be finished during March 2019.



INT9140 "Islas Orcadas del Sur"		Boundaries(*)	Scales
	North Latitude	60°10'S	1:150.000
	South Latitude	61°10'S	
	West Longitude	46°55'W	
East Longitude	44°08'W		

3.2 New Update

Continuous update on Antarctic Charts.

4- NEW PUBLICATIONS & UPDATES

Permanent update of Nautical Publications issued by the "Servicio de Hidrografía Naval" (the Naval Hydrographic Service). In particular the publications on the Antarctic Area:

- H – 205 Derrotero Argentino Parte V. "Antártida y Archipiélagos Subantárticos Argentinos y Suplemento" (Sailing Directions Part V. Antarctica. H-205).
- H – 213 Faro y Señales Marítimas Parte III. "Tierra del Fuego, canales e islas adyacentes, Islas Malvinas y Antártida Argentina y Suplemento" (List of lights and Maritime Signals Part III H-213
- Tide tables of 19 ports of Antarctica. Available at HCA web page.

HCA Seminars given at Conferences of Observer Organisations	Link
Various information	Link
Tide Tables - Antarctica (19 ports) - October 2017 - December 2018 - Servicio de Hidrografía Naval - Argentina	Link

5- MSI

Permanent Notice to Mariners.

6- S-55

Last update: 2016

7- CAPACITY BUILDING

Course on Antarctic Navigation

Attended the course successfully. The syllabus included –in addition to the specific matters on maritime safety-navigation and maneuvers in these latitudes, sea-ice areas with huge icebergs, National and International Legislation, the Antarctic Treaty and its Protocol on Environmental Protection, Fishing, Sea Tourism, Marine Pollution, climate effects on man and survival in polar areas.

Course	Date	Support	Participants / Officers
XXVII th Course on Antarctic Navigation	22 nd August to 13 th September 2016	"Dirección de Educación Naval" of the Argentine Navy	49
XXVIII th Course on Antarctic Navigation	28 th August to 8 th September 2017	"Dirección de Educación Naval" of the Argentine Navy	45

8- OCEANOGRAPHIC ACTIVITIES

General

Survey and processing of bathymetric data, magnetometer data, surface temperature, conductivity (salinity) and CTD stations collected by the oceanographic ship ARA "Puerto Deseado" in its scientific navigation to the Antarctic Peninsula.

GEBCO/IBC Activities

Review and harmonization of geographical and undersea feature names at Argentinean Antarctic Sector in contribution to SCAGI-SCAR and other National Organizations.

Continuous and active participation in the Sub-Committee on Undersea Features Names (GEBCO SCUFN).

9- ICE CHARTS & ANF ANTARCTIC GLACIOLOGY

See our web page link <http://www.hidro.gov.ar/smara/qlacio/sqlaciologica.asp#3>

Weekly updates for: GLACIOLOGICAL REPORT, SEA ICE BORDER, SEA ICE CHARTS and GLACIOLOGICAL OBSERVATIONS.

21 June 2018

BASE ORCADAS - ISLA LAURIE - ISLAS ORCADAS DEL SUR

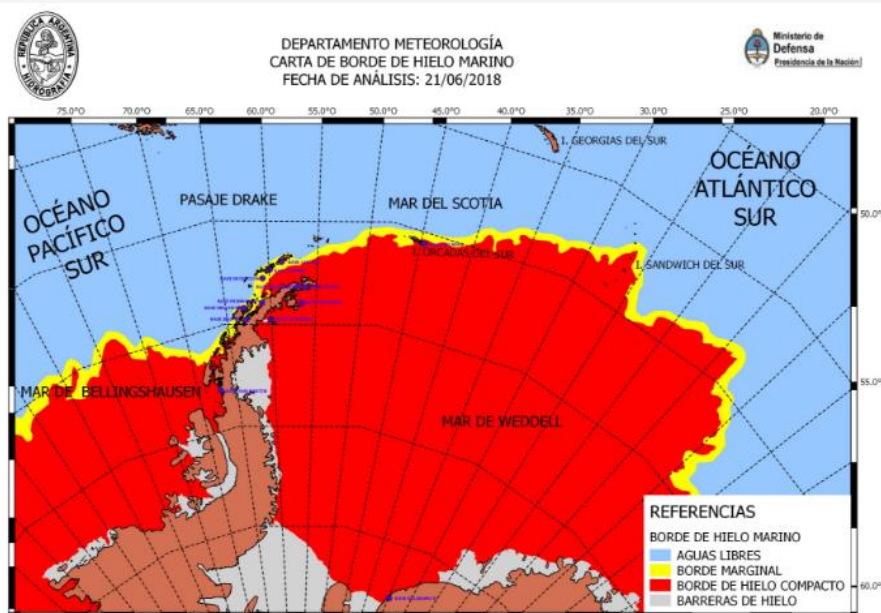
BAHIA SCOTIA: 8/10 NEW ICE AND NILAS WITH ICEBERGS INSIDE ONE KILOMETER.
BAHIA URUGUAY: 10/10 YOUNG ICE AND NILAS WITH ICEBERGS INSIDE ONE KILOMETER.

BASE ESPERANZA - PENÍNSULA ANTÁRTICA

BAHIA ESPERANZA: 7/10 NEW AND YOUNG ICE WITH ICEBERGS INSIDE ONE KILOMETER.
ESTRECHO ANTARCTIC: 6/10 NEW ICE WITH ICEBERGS INSIDE ONE KILOMETER.

BASE MARAMBIO - ISLA MARAMBIO

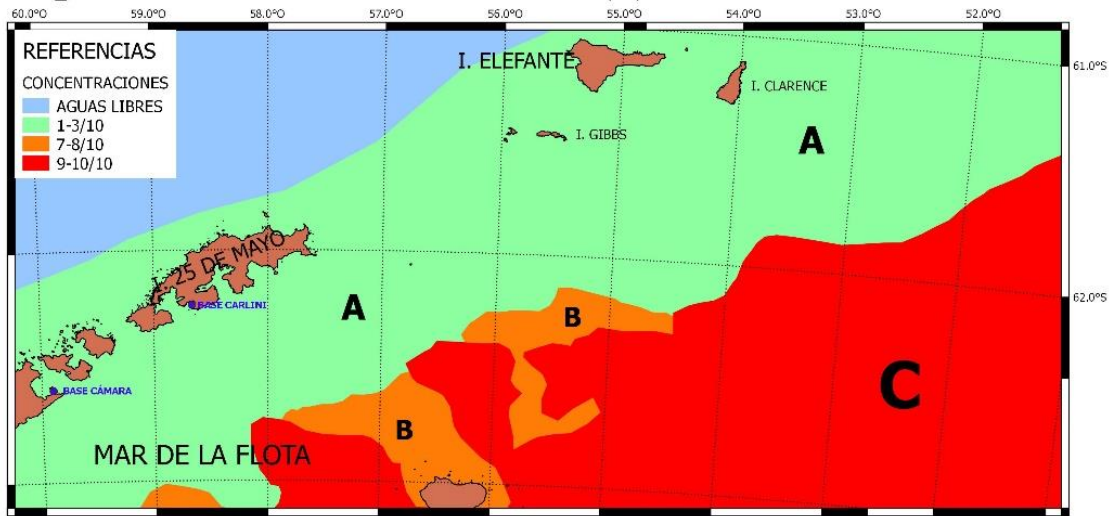
BAD VISIBILITY.



Hacer click sobre la imagen para ampliar



DEPARTAMENTO METEOROLOGÍA
CARTA DE HIELO
ZONA 3A: ESTE DE ISLAS SHETLAND DEL SUR Y MAR DE LA FLOTA
FECHA DE ANÁLISIS: 19/06/2018



REFERENCIAS

CONCENTRACIONES

AGUAS LIBRES
1-3/10
7-8/10
9-10/10

A

1 - 3
1 1 1
7. 6 1
~10

B

7 - 8
1 2 5
7. 6 1

C

9 - 10
2 4 4
7. 6 1