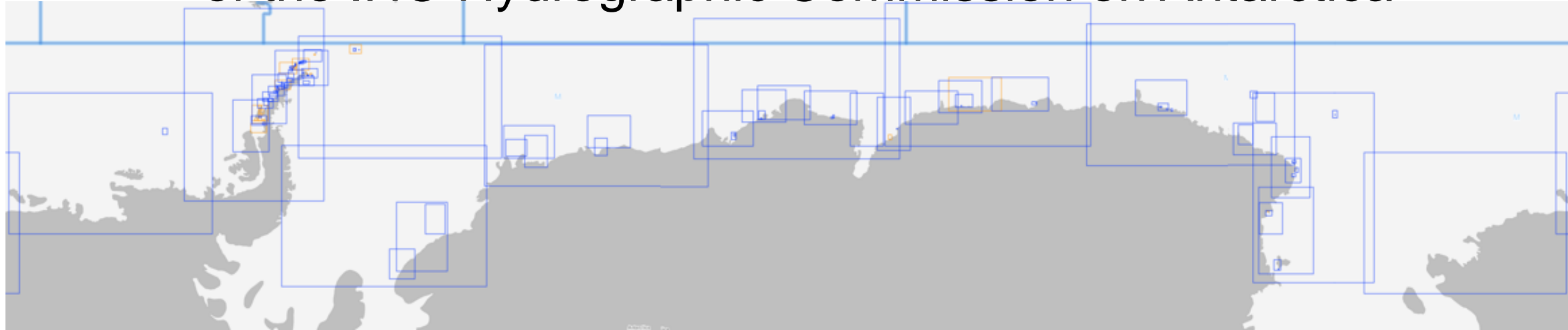




IHO

International
Hydrographic
Organization

17th Conference of the IHO Hydrographic Commission on Antarctica



Report of the INT Chart Coordinator – Region M

Agenda item 07.2C

HCA-17, VTC, 14 June 2021



IHO

Agenda

International
Hydrographic
Organization

Chart Coordination Update

- Region M Production Summary
- Production Update
 - INT Chart & ENC
 - Production Proposals
- Scheme Analysis
 - Gap Analysis
 - Overlap Report
- Recommendations for HCA



IHO

International
Hydrographic
Organization

Region M Production Summary

HCA-17, VTC, **14 June 2021**

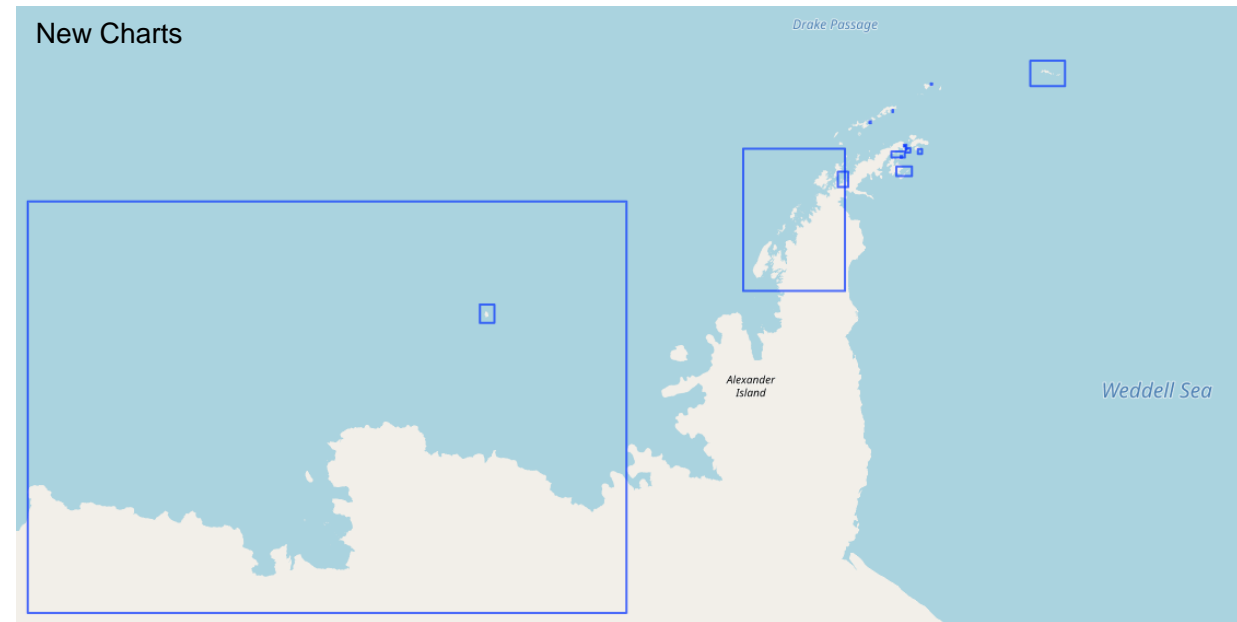
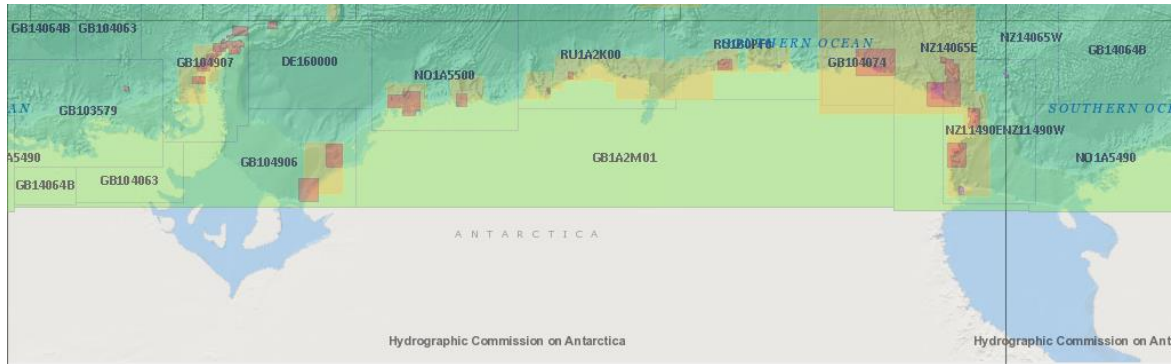


IHO

HCA Region M Production Summary

International Hydrographic Organization

	HCA 16	HCA 17
Published	92	98
Schemed	23	18
ENCs		148



Data based on update provided by members AR, AU, BR, CL, CO, ES, FR, IN, IT, JP, NO, SA, US & UK.
 No updates from CN, EC, GR, RoK, NZ, PE, RU, UY & VE

HCA-17, VTC, 14 June 2021



IHO

International
Hydrographic
Organization

Region M Production Update

HCA-17, VTC, **14 June 2021**



IHO

HCA Region M Production Update

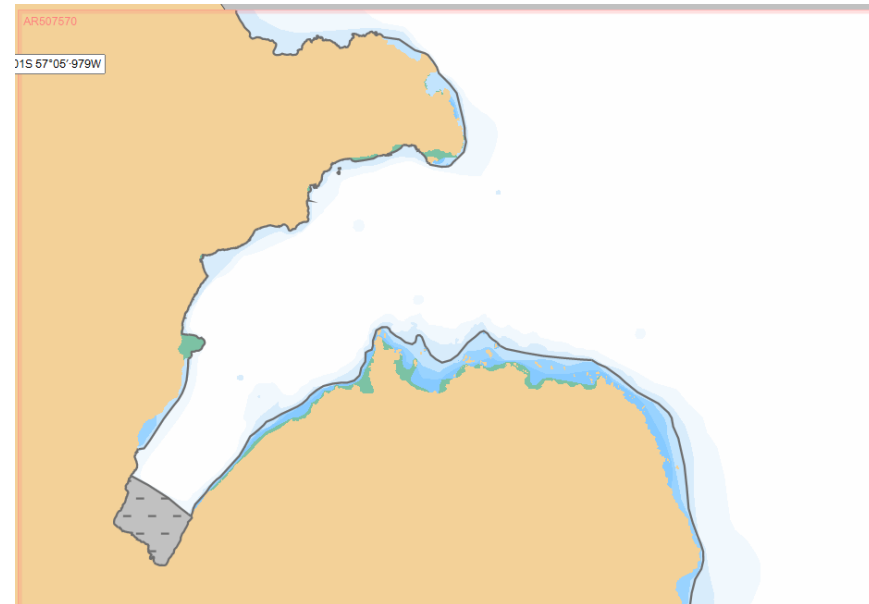
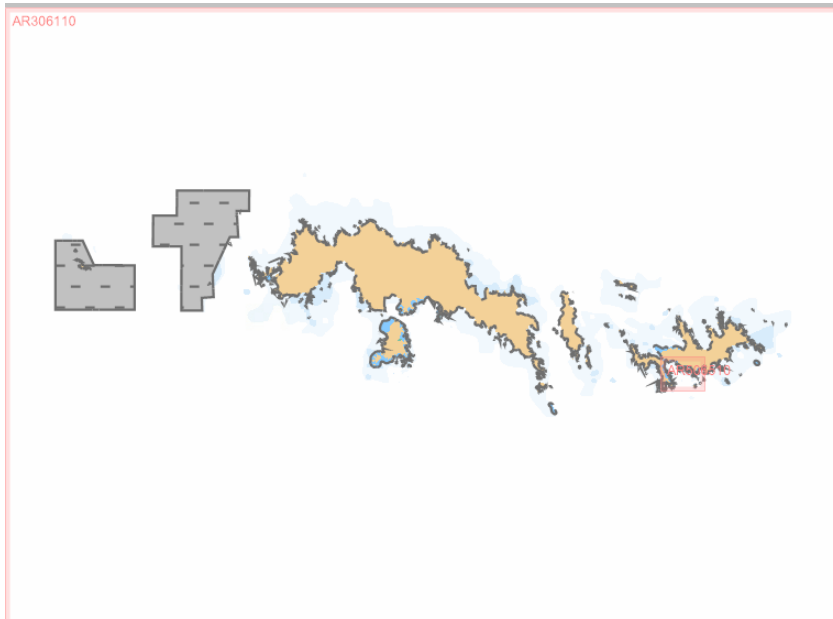
International
Hydrographic
Organization

Regional M Production Update – ENC's Produced Since HCA16 Report

SHN - Argentina

AR306110 (INT 9101) – Peninsula Trinidad, Esperanza Base (NC 2020)

AR507570 (INT 9140) – Islas Orcas del Sur (NC 2019)





IHO

HCA Region M Production Update

International Hydrographic Organization

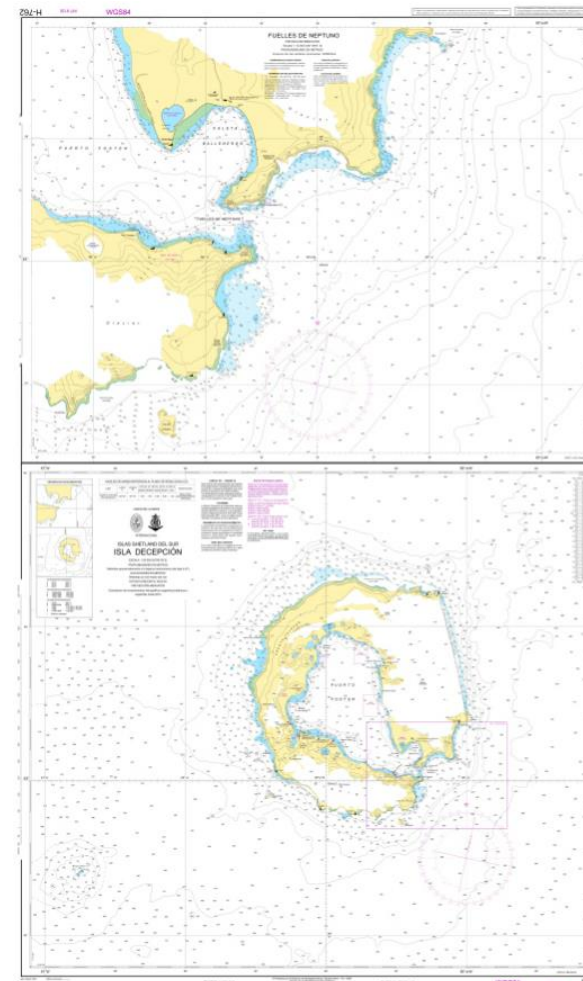
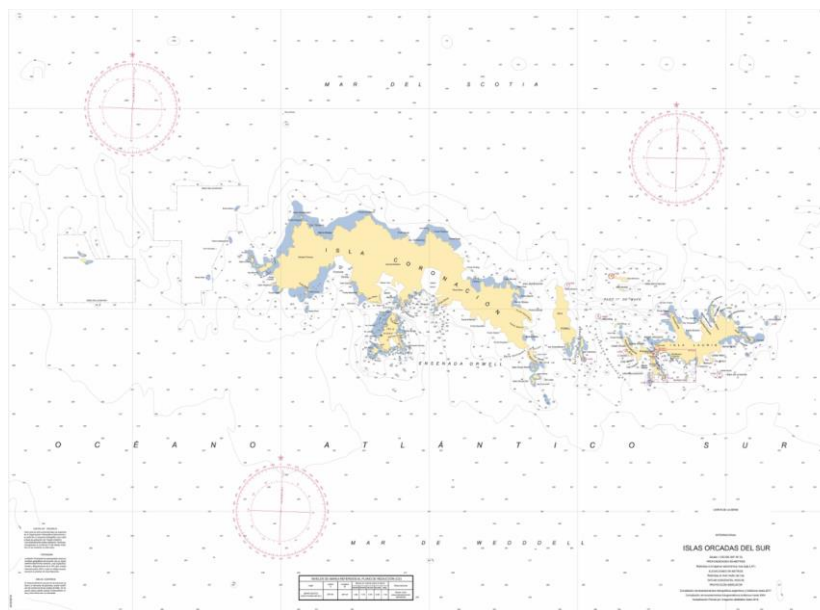
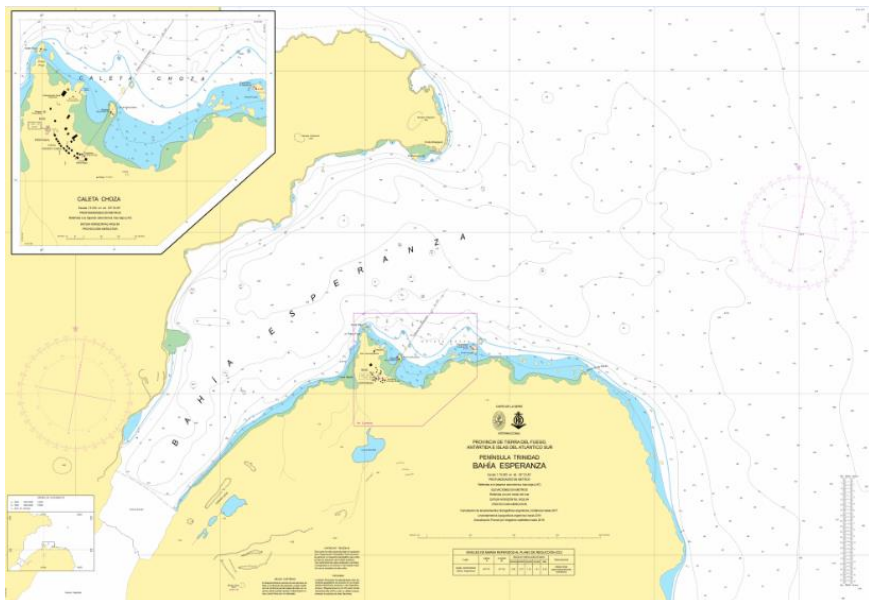
Regional M Production Update – INT Charts Produced Since HCA16 Report

SHN - Argentina

INT 9101 – Esperanza Bay (NC 2020)

INT 9120 – Deception Island (2021)

INT 9140 – Islas Orcas del Sur (NC 2019)



HCA-17, VTC, 14 June 2021

Point of Contact: Fabian Vetere



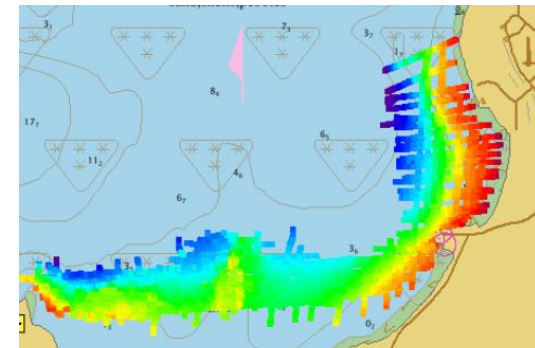
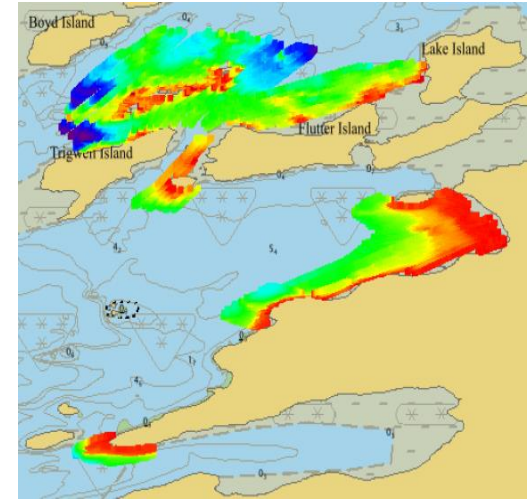
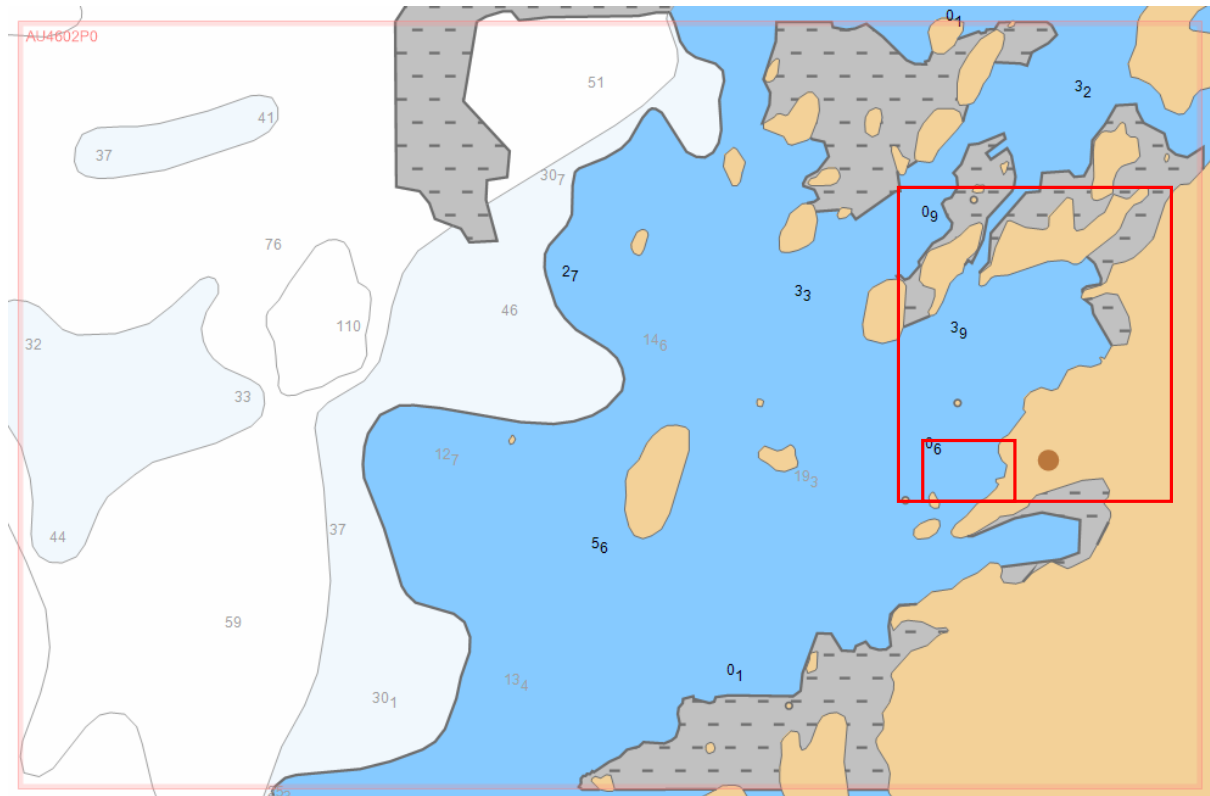
IHO

HCA Region M Production Update

Regional M Production Update – ENC's Produced Since HCA16 Report

AHO - Australia

AU4602P0 (no chart) – (NE 2020)



HCA-17, VTC, 14 June 2021

Point of Contact: Fabian Vetere



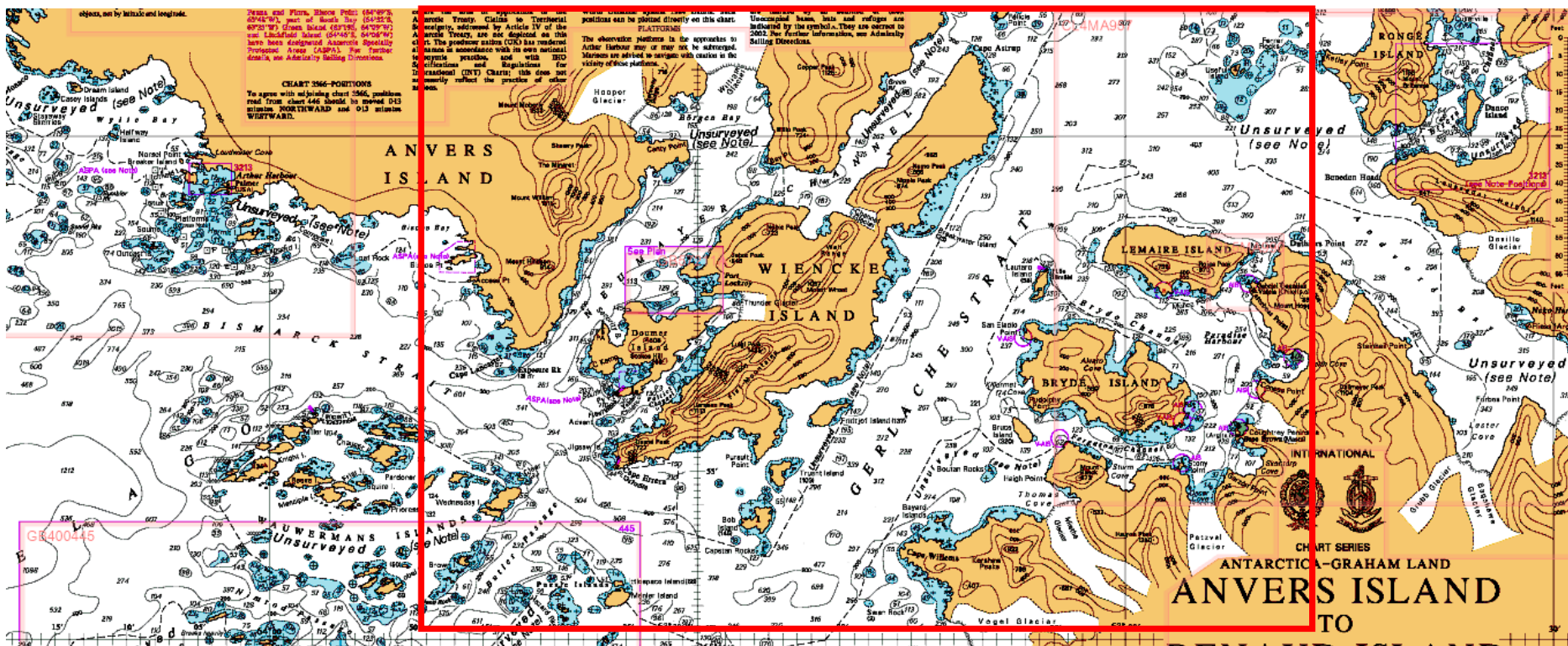
IHO

HCA Region M Production Update

Regional M Production Update – ENCs Produced Since HCA16 Report

SHOA – Chile

No ENC – update required regarding INT9104 equivalent



HCA-17, VTC, 14 June 2021

Point of Contact: Christian Marchant



IHO

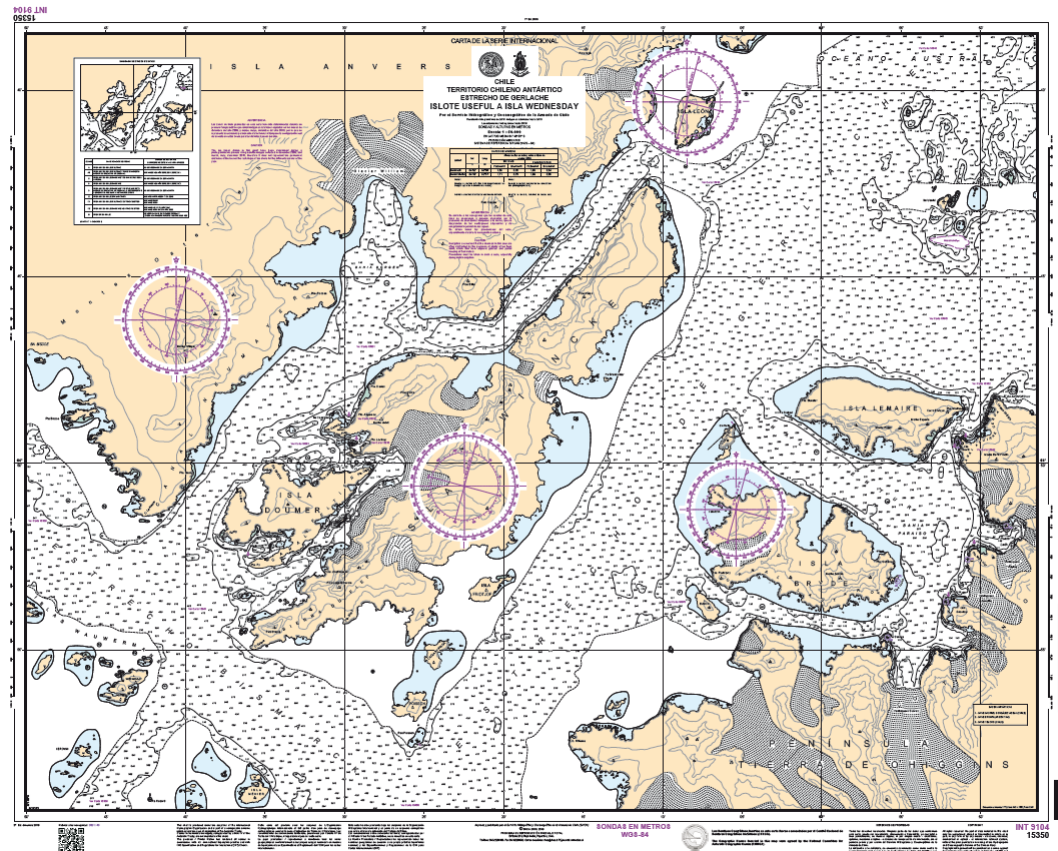
HCA Region M Production Update

International
Hydrographic
Organization

Regional M Production Update – INT Charts Produced Since HCA16 Report

SHOA – Chile

INT 9104 – Gerlache Strait, Useful Island to Wednesday Island (NE 2019)



HCA-17, VTC, 14 June 2021

Point of Contact: Christian Marchant



IHO

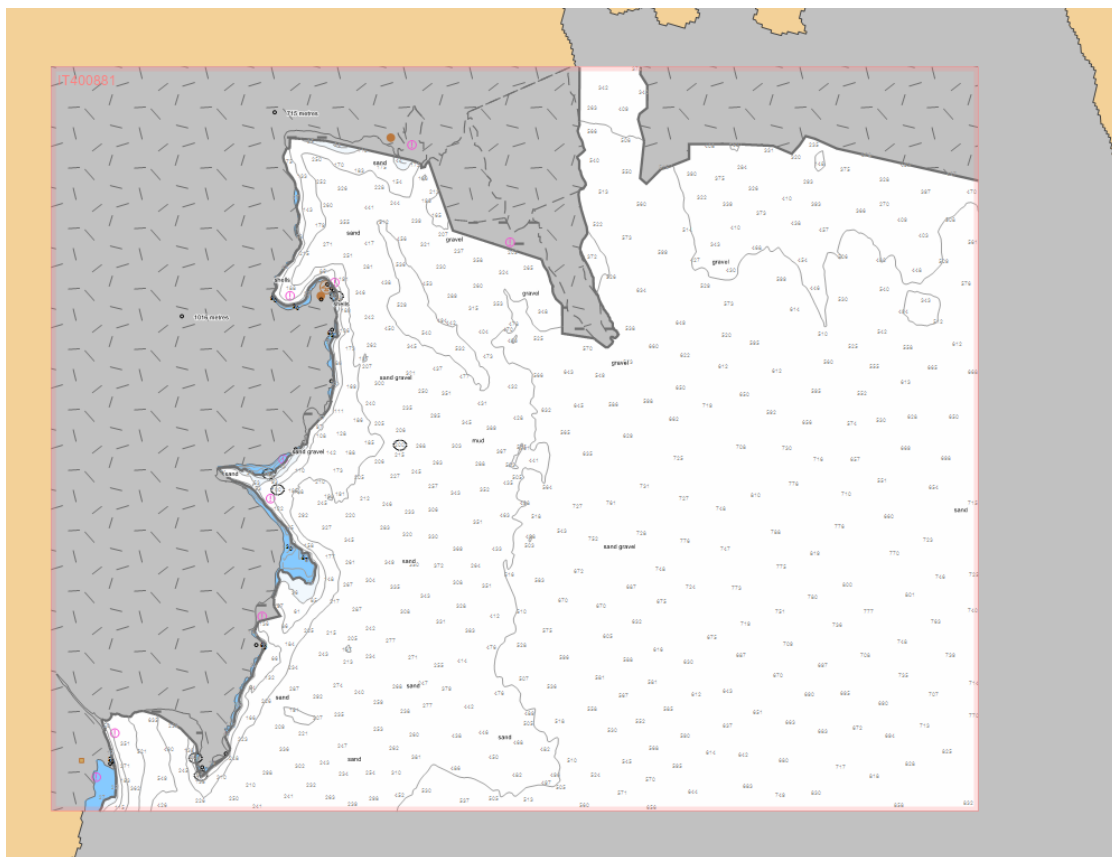
HCA Region M Production Update

International
Hydrographic
Organization

Regional M Production Update – ENC's Produced Since HCA16 Report

IIM – Italy

IT400881 (INT 9004) – Terry Nova Bay (NE 2019)



HCA-17, VTC, 14 June 2021

Point of Contact: Marta Pratellesi



IHO

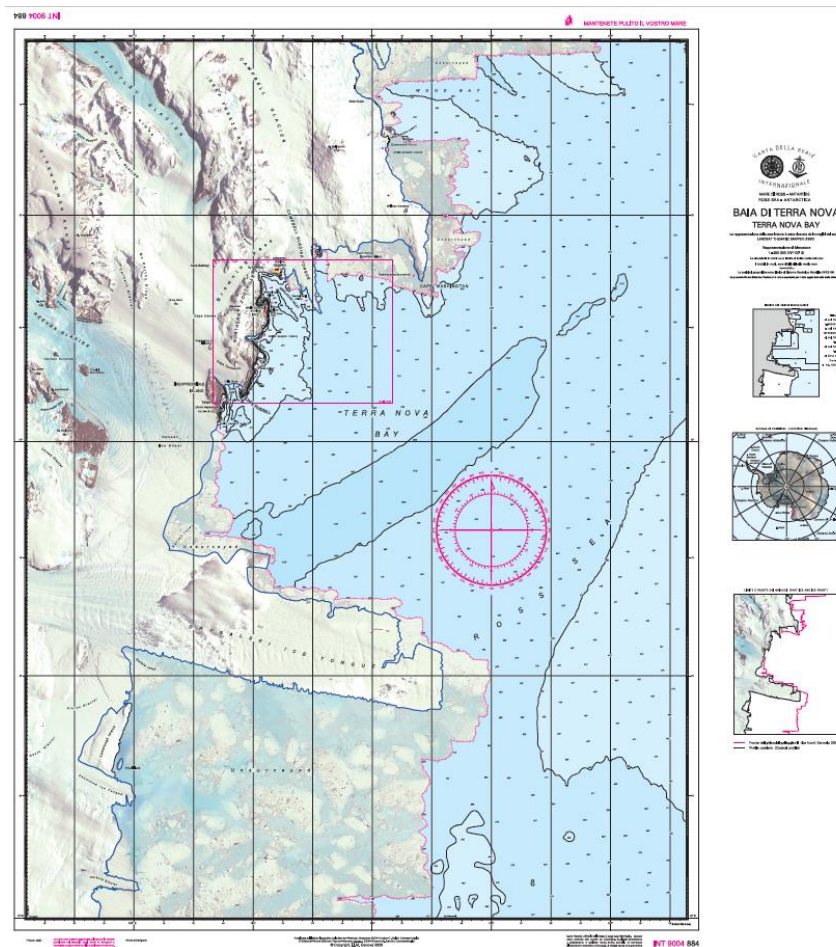
HCA Region M Production Update

International
Hydrographic
Organization

Regional M Production Update – INT Charts Produced Since HCA16 Report

IIM – Italy

INT 9004 – Terry Nova Bay (NE 2020)



HCA-17, VTC, 14 June 2021

Point of Contact: Marta Pratellesi



IHO

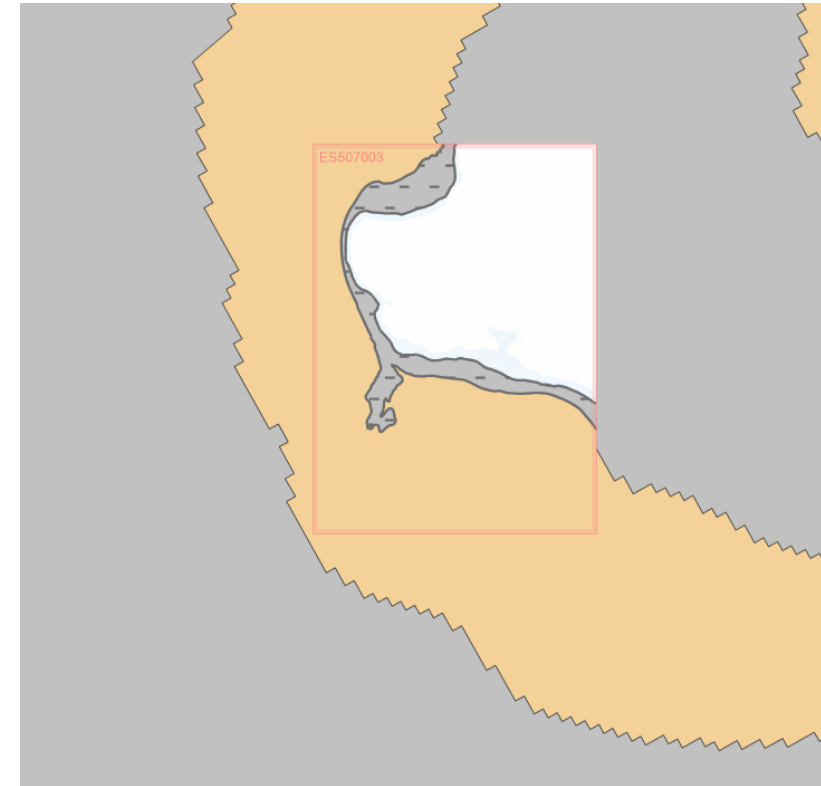
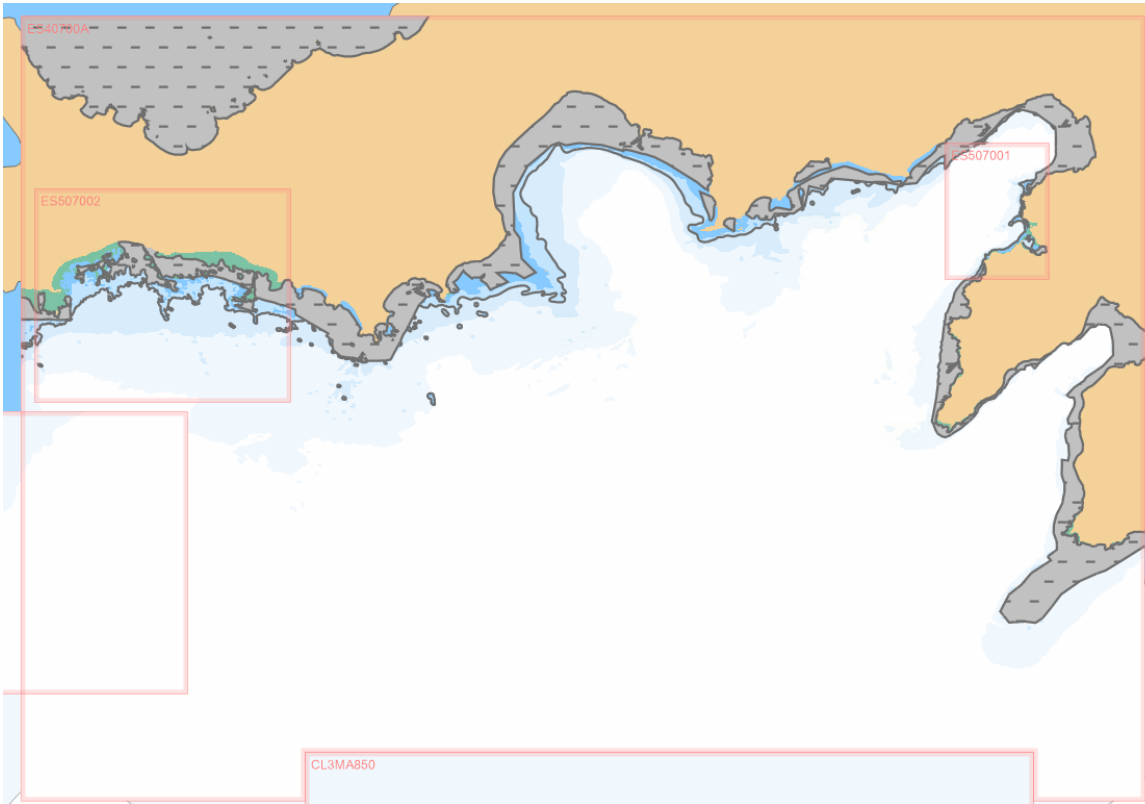
HCA Region M Production Update

Regional M Production Update – ENC's Produced Since HCA16 Report

IHM – Spain

ES40700A (INT 9121) – Bernard Point to Camo Byers with Half Moon Island (NC 2021)

ES507003 Fumarole Bay (released into service 2020)



HCA-17, VTC, 14 June 2021

Point of Contact: Salvador Moreno



IHO

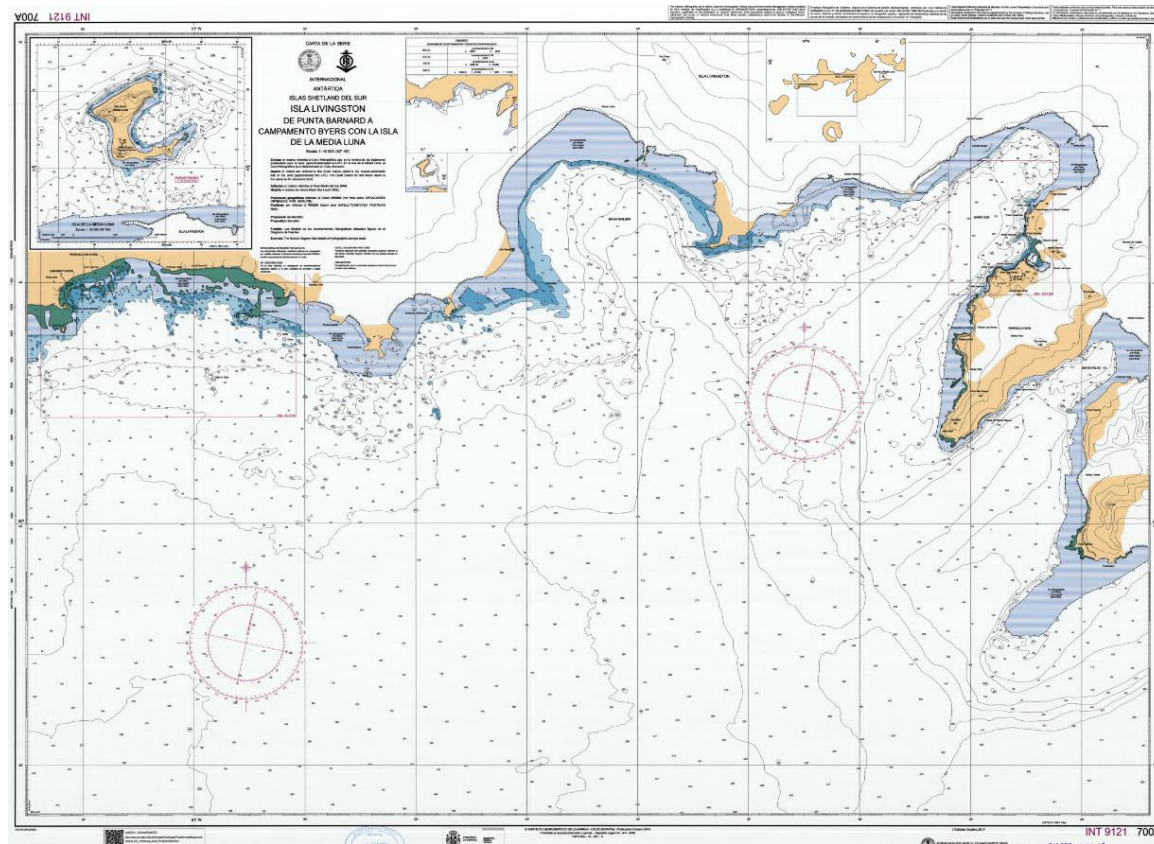
HCA Region M Production Update

International
Hydrographic
Organization

Regional M Production Update – INT Charts Produced Since HCA16 Report

IHM – Spain

INT 9121 – Bernard Point to Camo Byers with Half Moon Island (NC 2019)



HCA-17, VTC, 14 June 2021

Point of Contact: Salvador Moreno



IHO

HCA Region M Production Update

International
Hydrographic
Organization

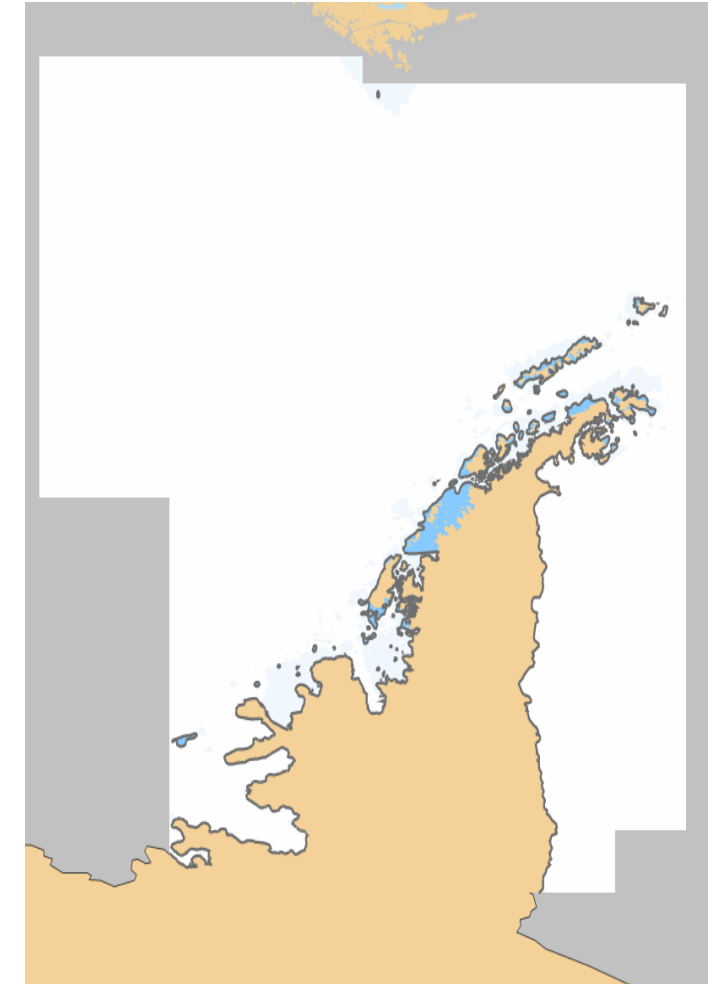
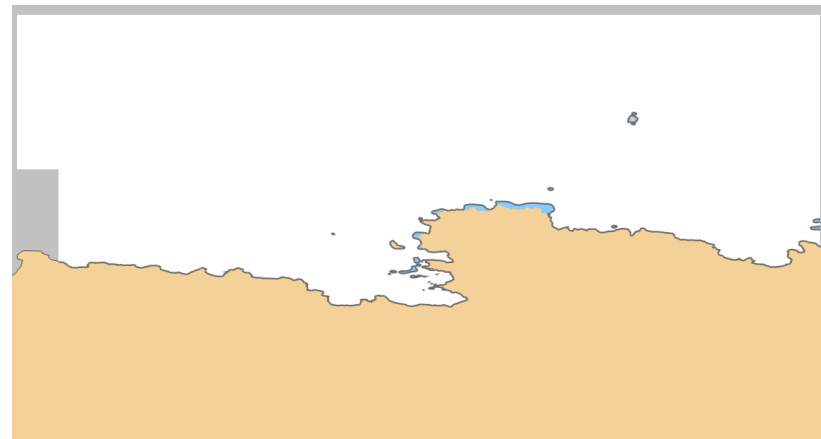
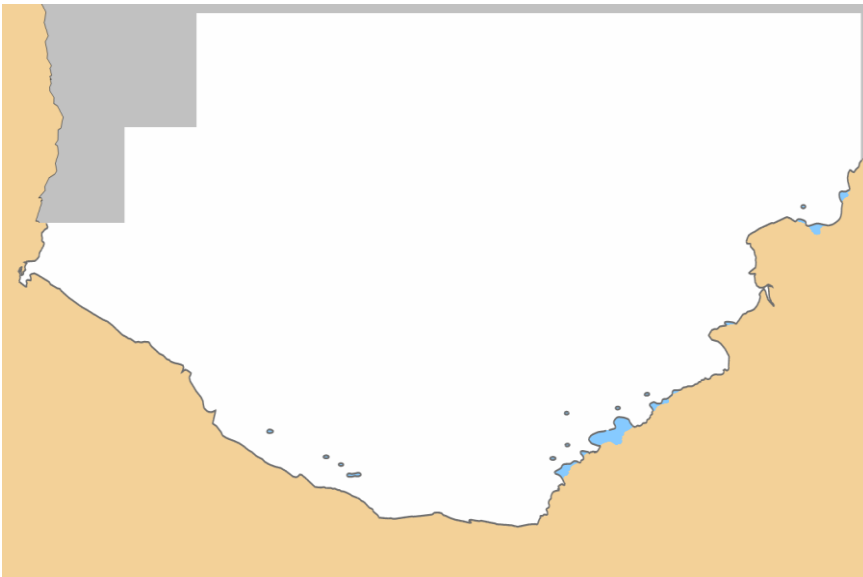
Regional M Production Update – ENC's Produced Since HCA16 Report

UKHO – UK

GB104906 (INT 906) – Weddell Sea (NC 2020)

GB104907 (INT 907) – Approaches to the Antarctic Peninsula (NE 2020)

GB103579 (INT 908) – Rydberg Peninsula to Siple Island (NC 2020)



HCA-17, VTC, **14 June 2021**

Point of Contact: Lee Truscott



IHO

HCA Region M Production Update

International
Hydrographic
Organization

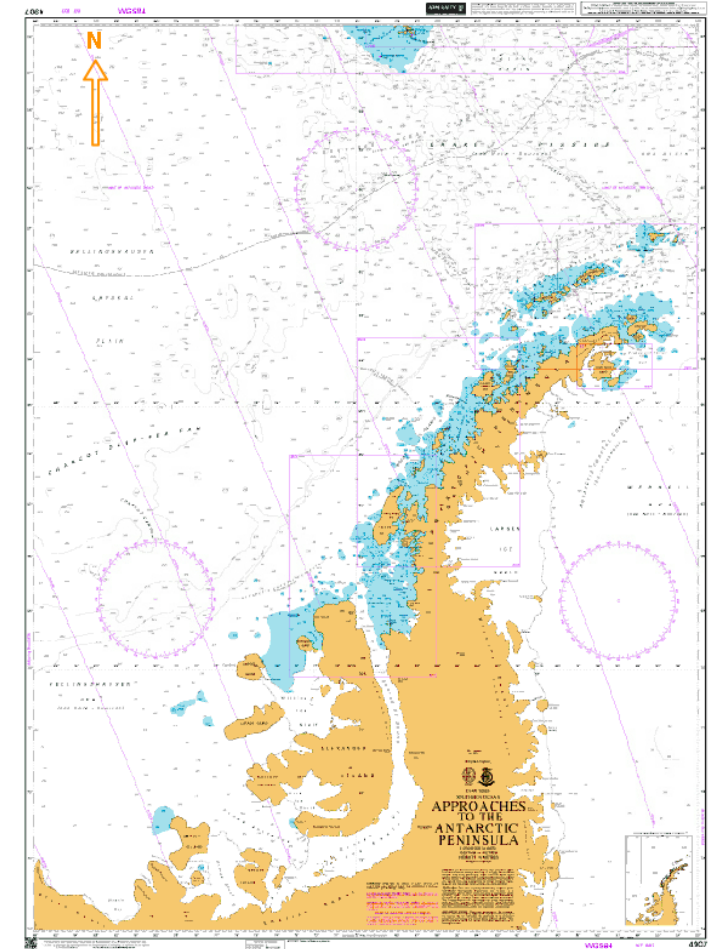
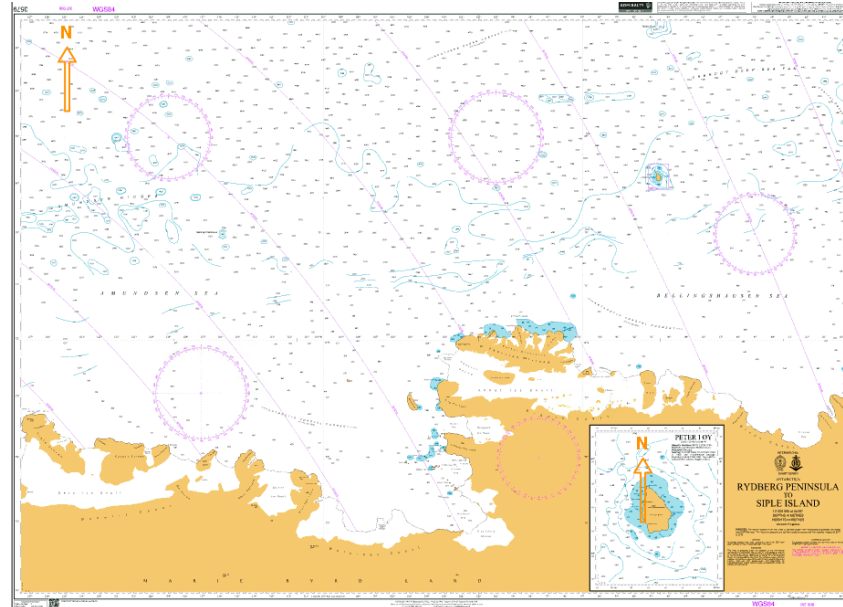
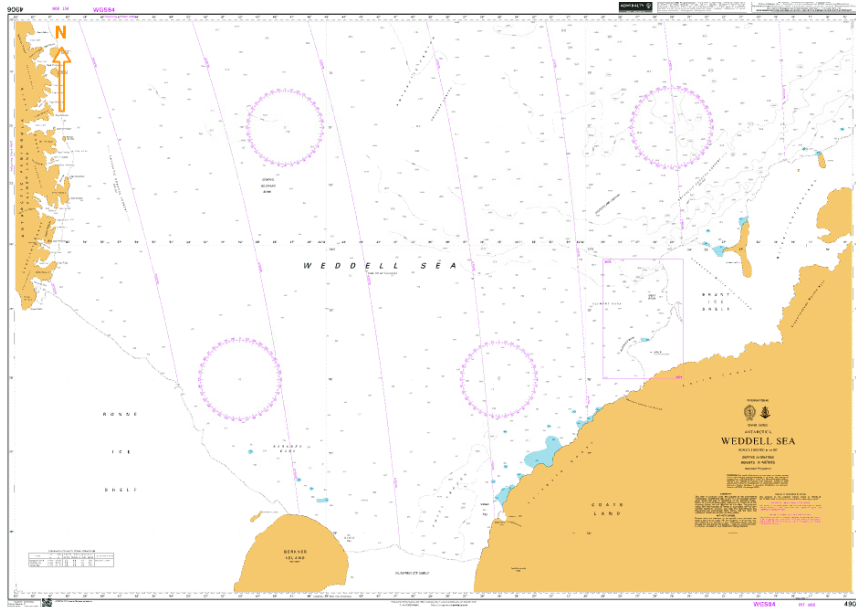
Regional M Production Update – INT Charts Produced Since HCA16 Report

UKHO – UK

INT 906 – Weddell Sea (NC 2020)

INT 907 – Approaches to the Antarctic Peninsula (NE 2020)

INT 908 – Rydberg Peninsula to Siple Island (NC 2020)



HCA-17, VTC, 14 June 2021

Point of Contact: Lee Truscott



IHO

HCA Region M Production Update

International
Hydrographic
Organization

Regional M Production Update – INT Charts Produced Since HCA16 Report

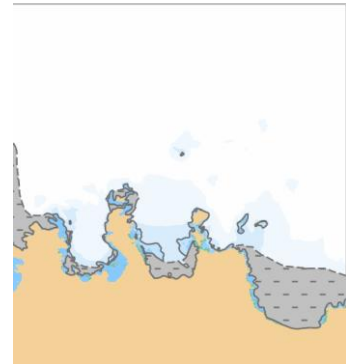
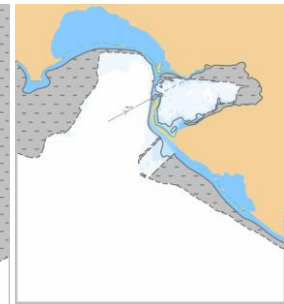
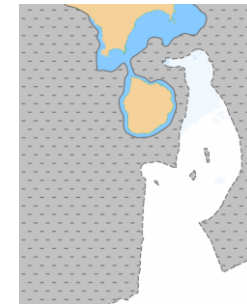
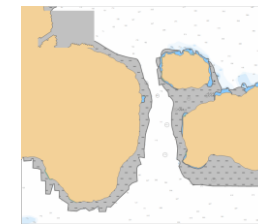
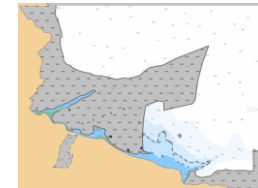
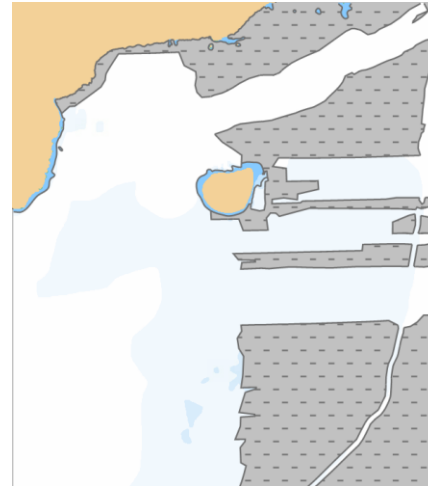
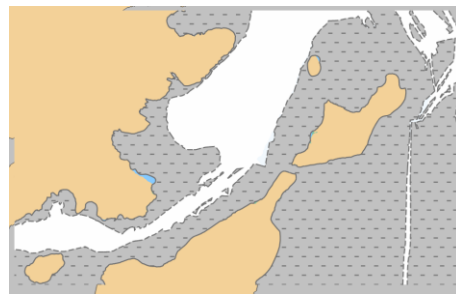
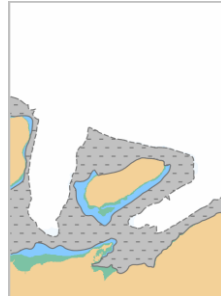
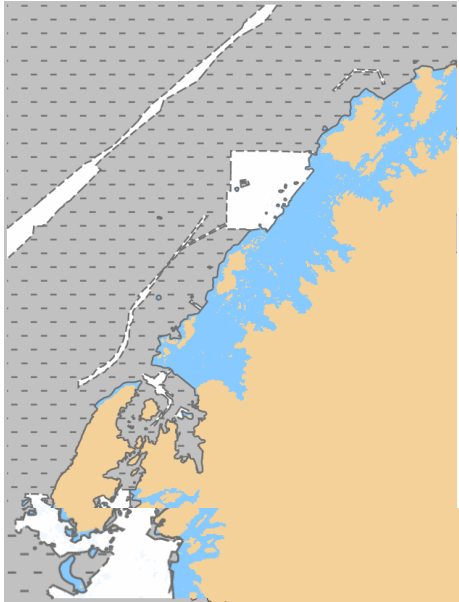
UKHO – UK

GB203572 (INT 9171) – Brabant island to Adelaid Island (NC 2020)

GB43209A, GB503209 & GB43209C INT 9130 – Plans in Erebus and Terror Gulf (NC 2020)

INT 9112 – Plans in the South Shetland Islands (NC 2020)

GB52310A, GB532010B & GB53210C (INT 9114) – Plans in Antarctic Sound (NC 2019)



HCA-17, VTC, 14 June 2021

Point of Contact: Lee Truscott



IHO

HCA Region M Production Update

International
Hydrographic
Organization

Regional M Production Update – INT Charts Produced Since HCA16 Report

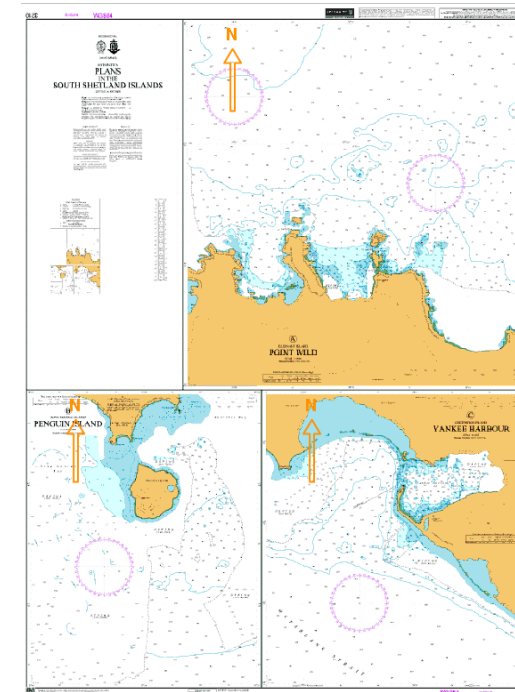
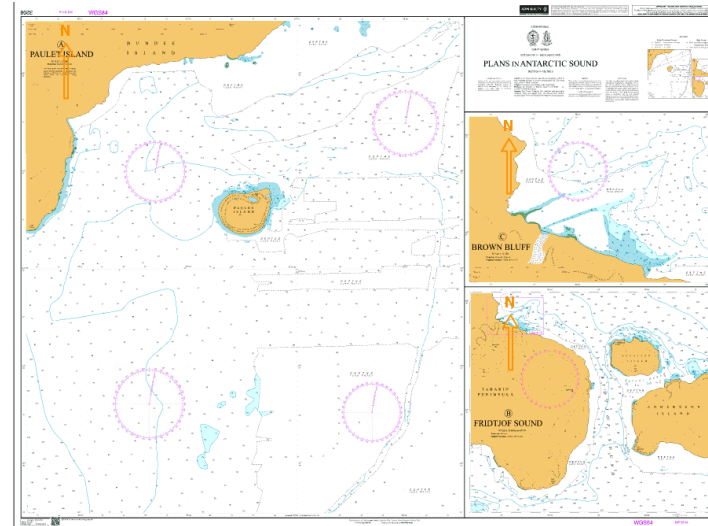
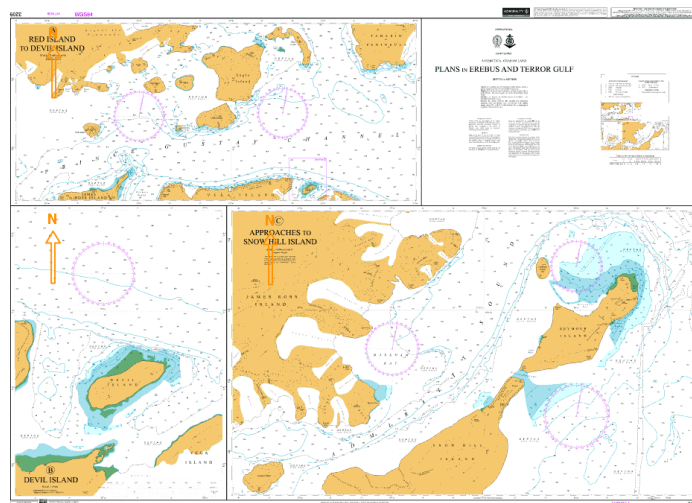
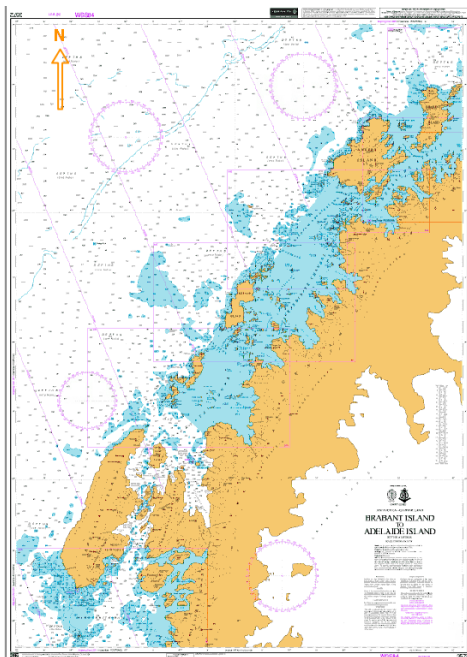
UKHO – UK

INT 9171 – Brabant island to Adelaide Island (NC 2020)

INT 9130 – Plans in Erebus and Terror Gulf (NC 2020)

INT 9112 – Plans in the South Shetland Islands (NC 2020)

INT 9114 – Plans in Antarctic Sound (NC 2019)



HCA-17, VTC, 14 June 2021

Point of Contact: Lee Truscott



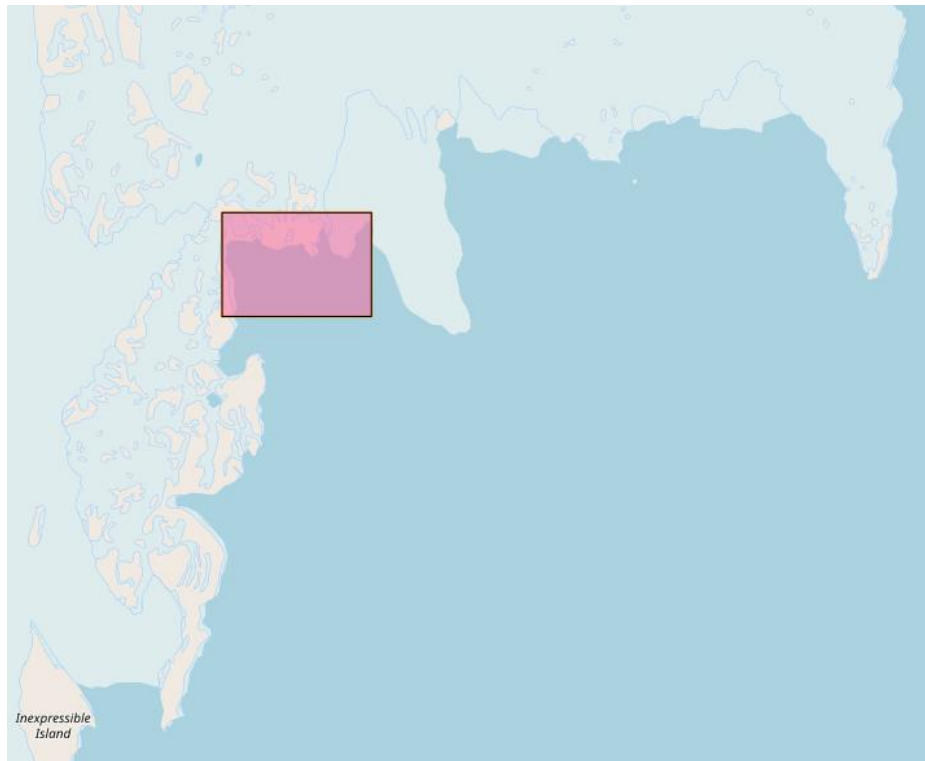
IHO

HCA Region M Production Update

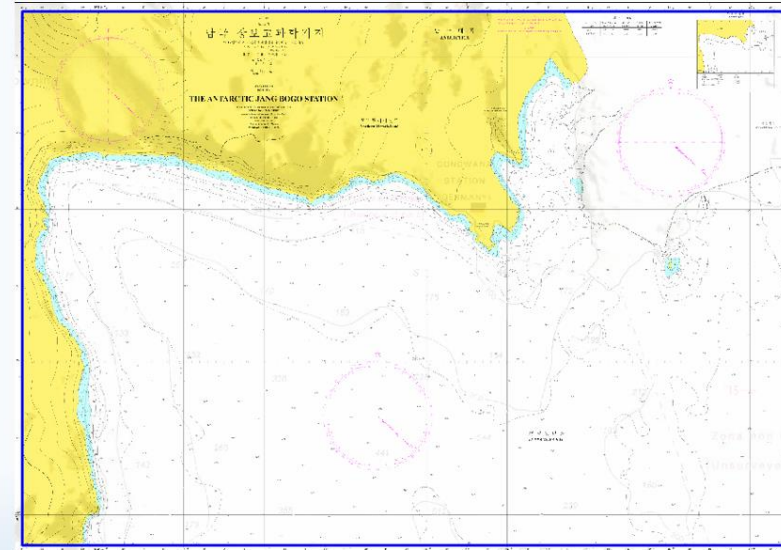
International
Hydrographic
Organization

Regional M Production Update – Product Proposals

INT 9103 RoK - proposal was endorsed by members in October 2019
Coordinator provided feedback in accordance with S11 Part A Annex 11
RoK data required by existing regional producers – update required – HCA action?



Proposed New Chart Overview



N 74 36.7S
S 74 40.2S
E 164 21.0E
W 164 02.0E



International Hydrographic Organization
Organisation Hydrographique Internationale

HCA-17, VTC, 14 June 2021

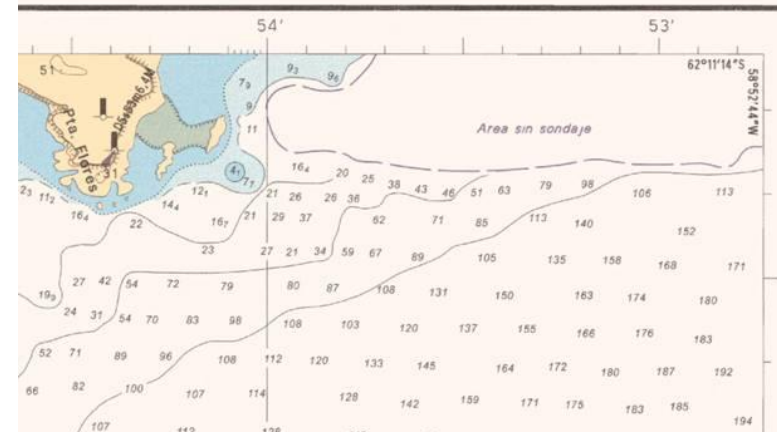
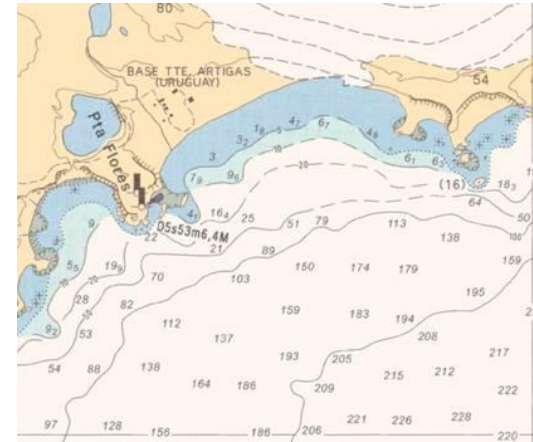
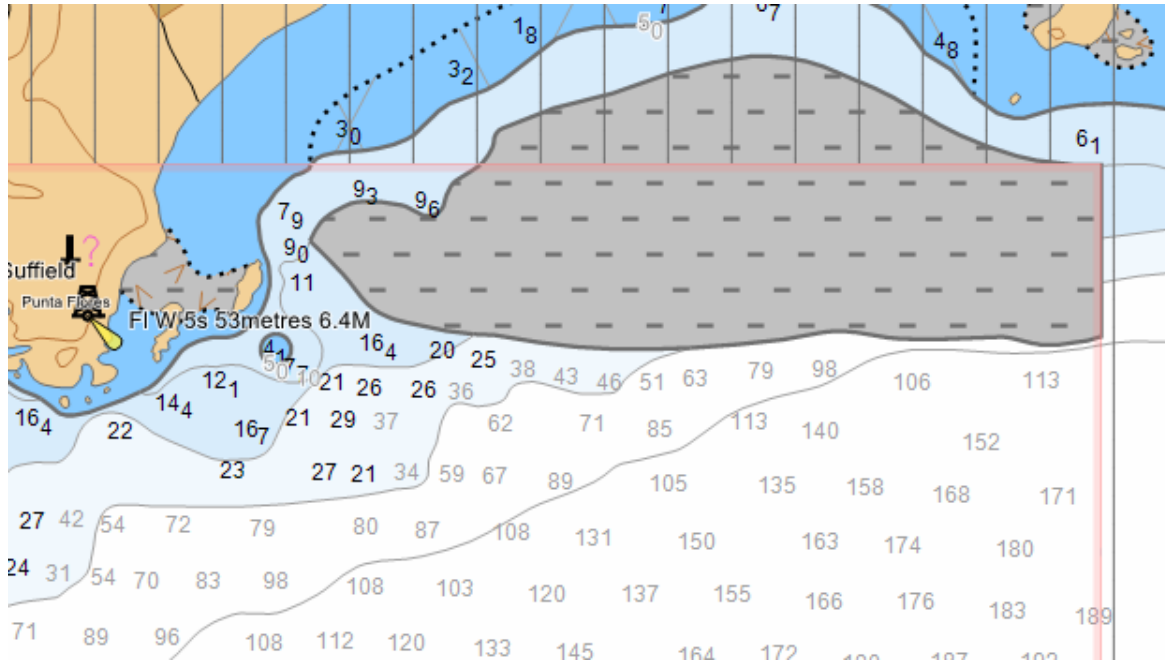


IHO

HCA Region M Production Update

Regional M Production Update – Product Proposals

Enquiry received from SOHMA (Uruguay) regarding new ENC coverage of Artigas Base
Potential rescheme to meet wider user requirement including band 6 ENC
Data to be shared with Chile – possible HCA action



HCA-17, VTC, 14 June 2021

International
Hydrographic
Organization



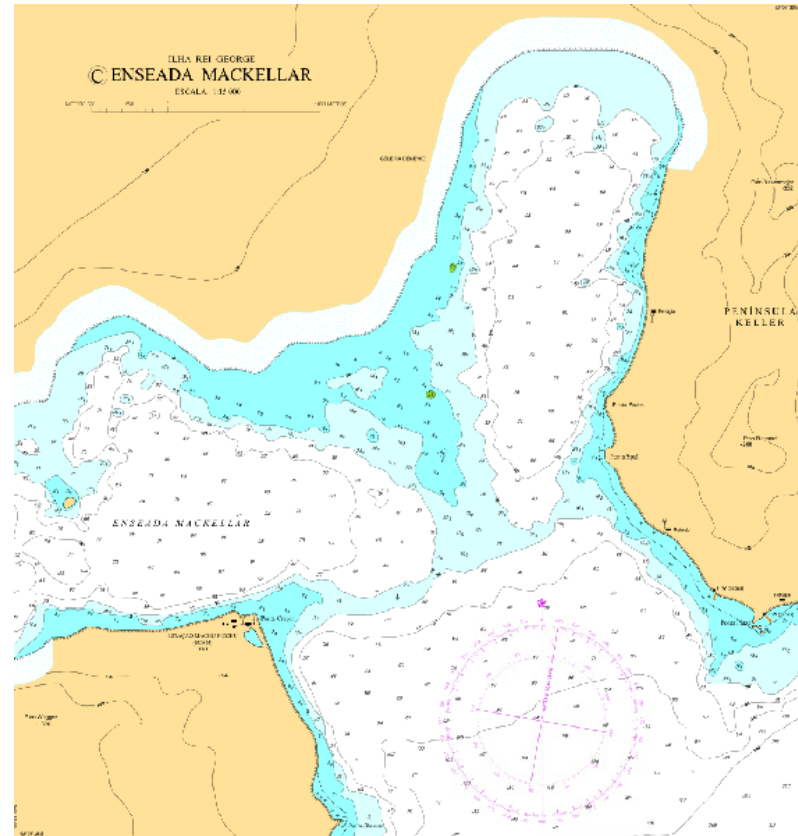
IHO

HCA Region M Production Update

International
Hydrographic
Organization

Regional M Production Update – Product Proposals

Region M coordinator encourages production/commercialisation of ENC for Mackellar Inlet
Please make coordinator aware of any ENCs in region that have not been made for distribution – action members



HCA-17, VTC, 14 June 2021



IHO

International
Hydrographic
Organization

Region M Brief Scheme Analysis

HCA-17, VTC, **14 June 2021**



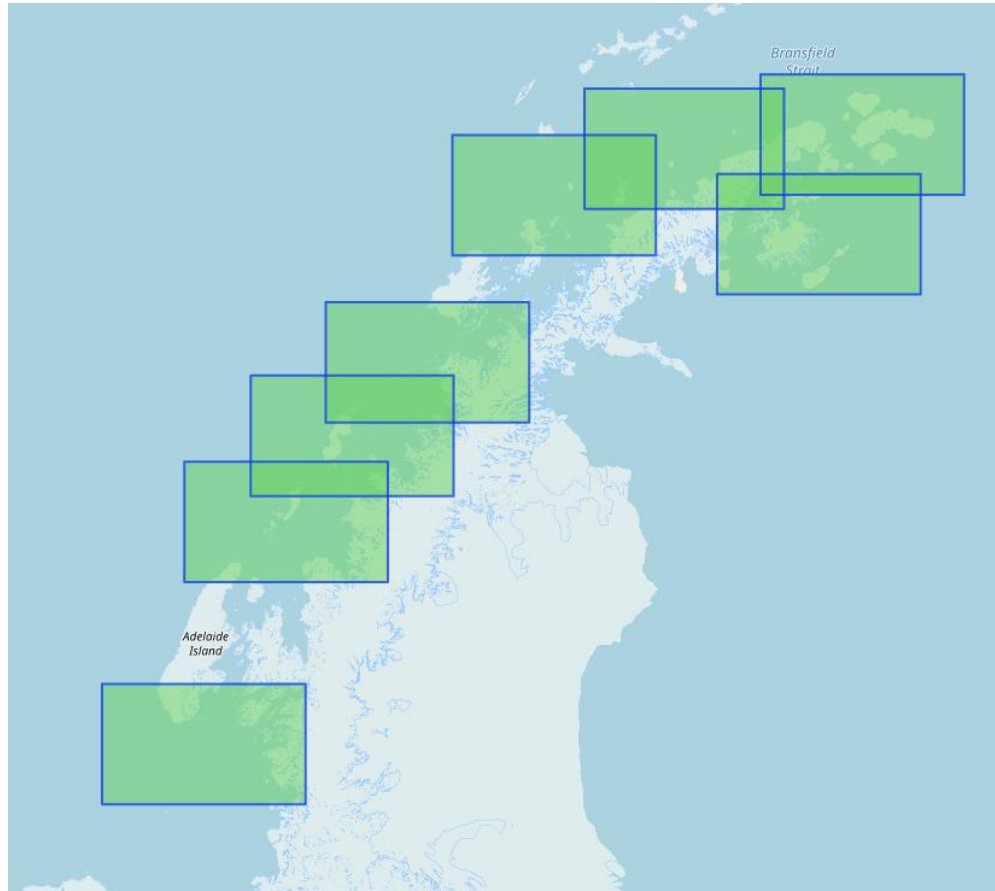
IHO

HCA Region M Scheme Analysis

International
Hydrographic
Organization

Coastal Scheme Analysis

Produced



Schemed



HCA-17, VTC, 14 June 2021



IHO

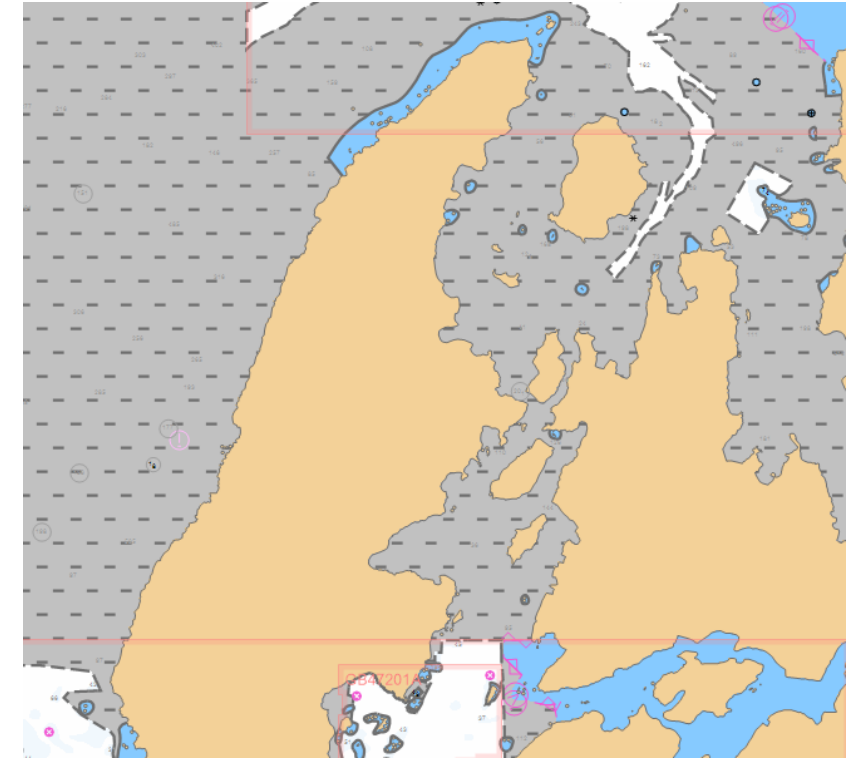
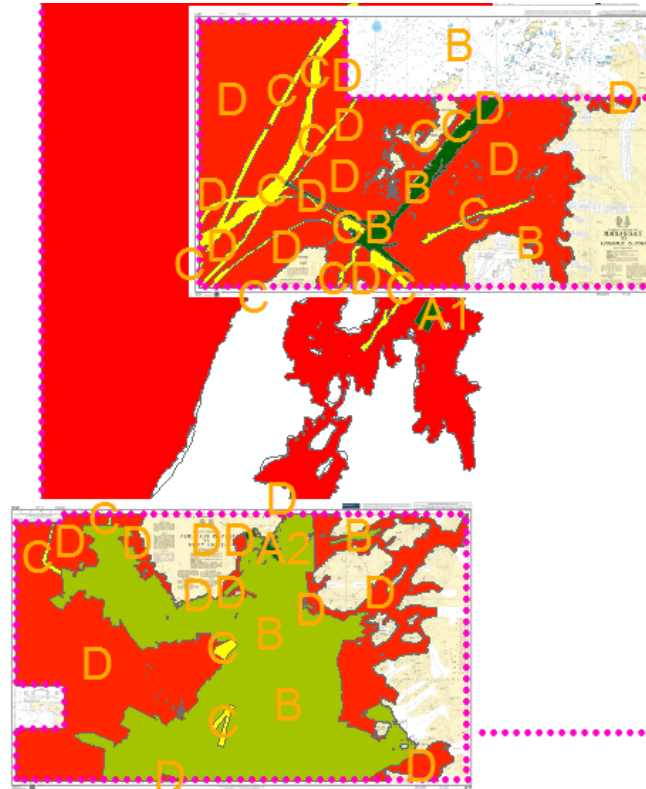
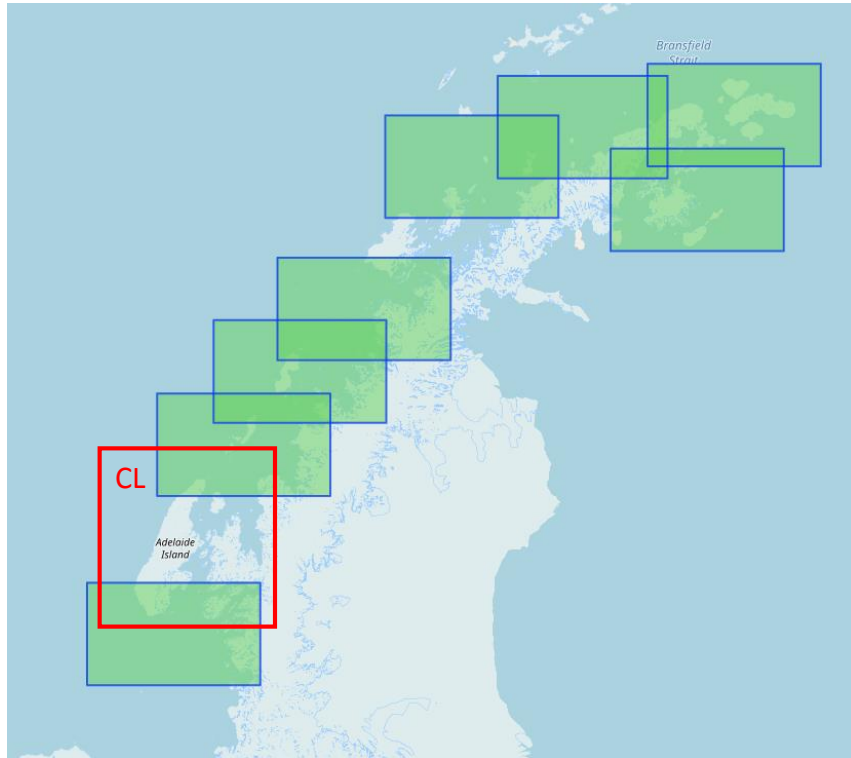
HCA Region M Scheme Analysis

International
Hydrographic
Organization

Coastal ENC Gap Analysis – Adelaide Island

ZoC

ECDIS



HCA-17, VTC, 14 June 2021

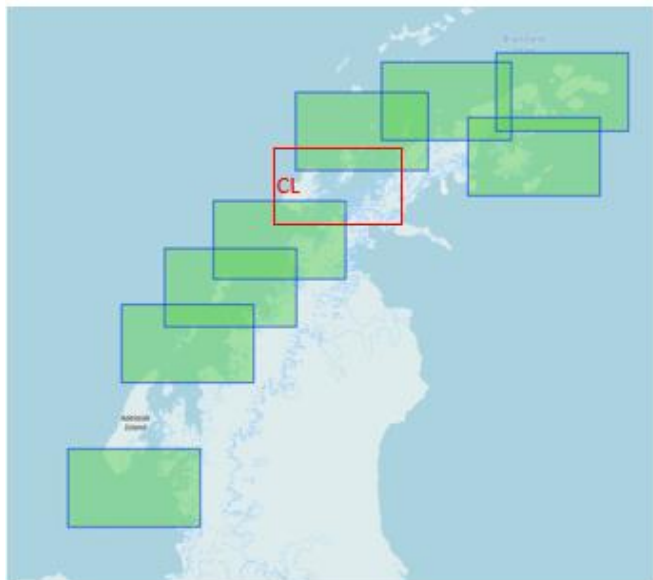


IHO

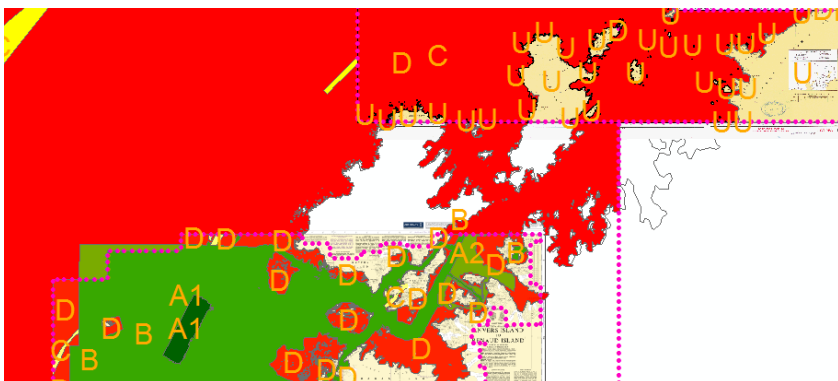
HCA Region M Scheme Analysis

International
Hydrographic
Organization

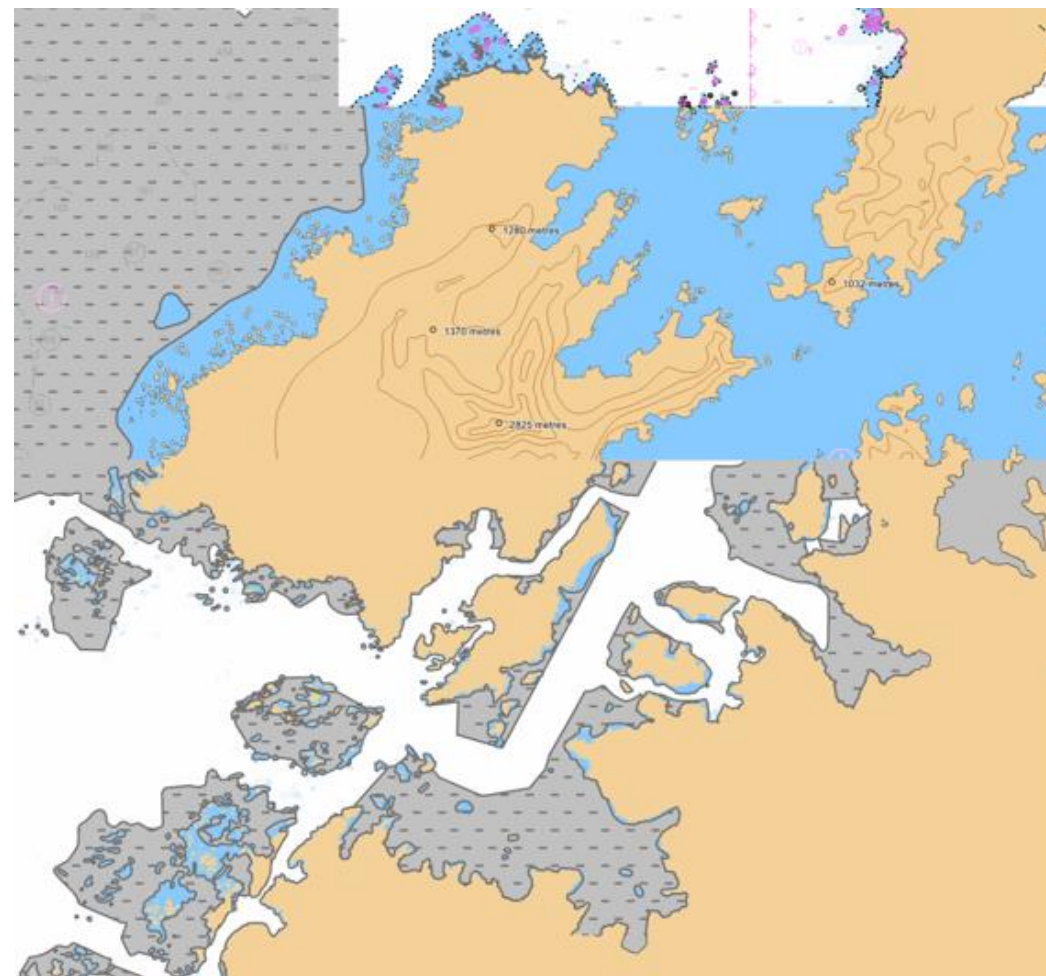
Coastal ENC Gap Analysis – East of Brabant Island



ZoC



ECDIS



HCA-17, VTC, 14 June 2021



IHO

HCA Region M Scheme Analysis

International
Hydrographic
Organization

Coastal Scheme Options Adelaide & Brabant

What is required to complete scheme?

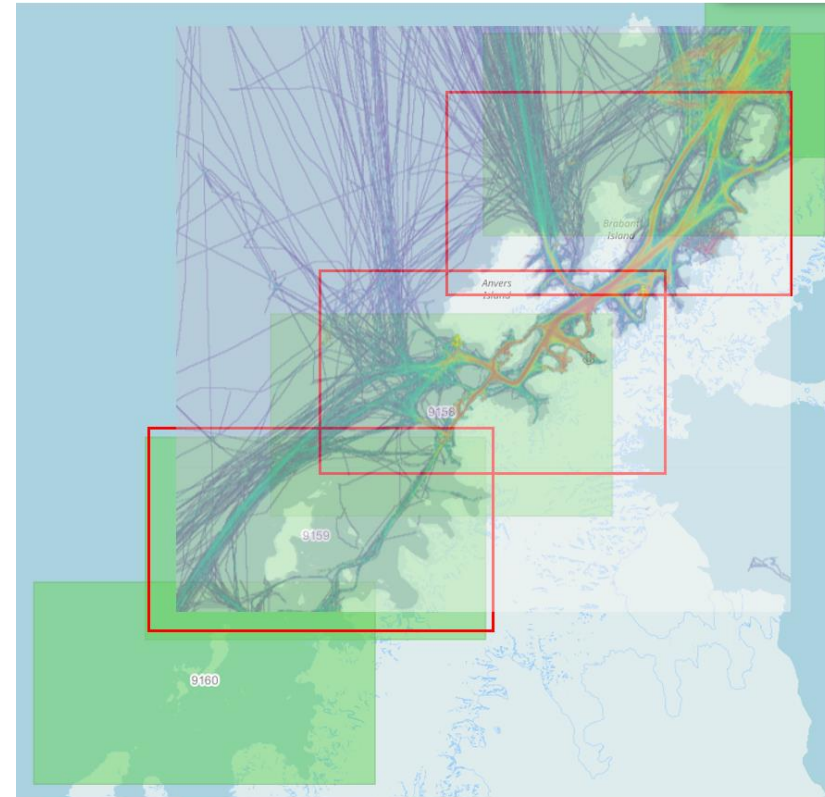
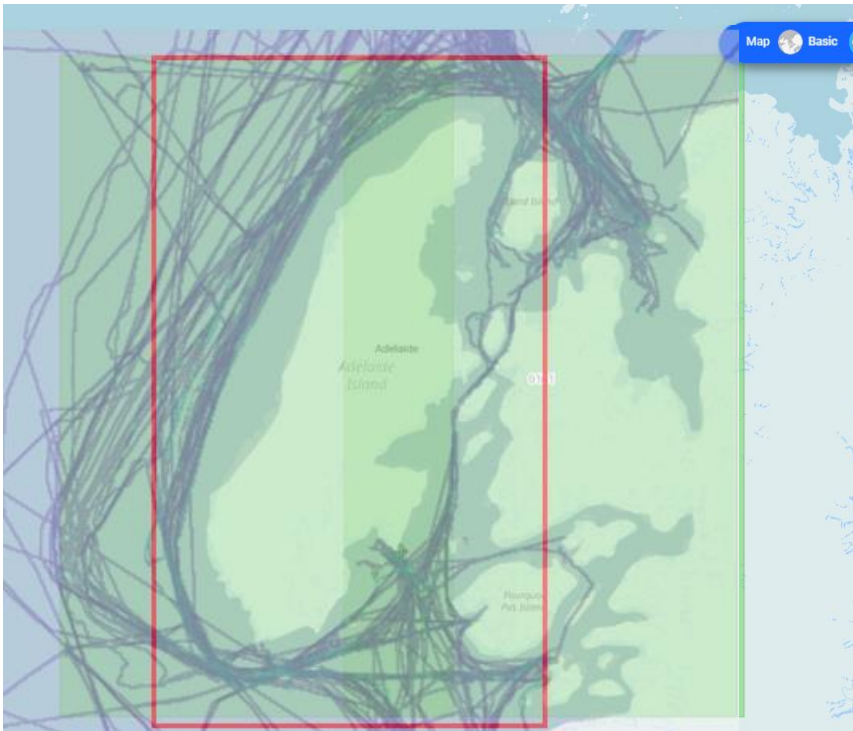
Data?

Resource?

Is scheme still current?

Can it be rationalised (1 chart in lieu of 2)?

Adjust existing charts to close gap?



HCA-17, VTC, 14 June 2021



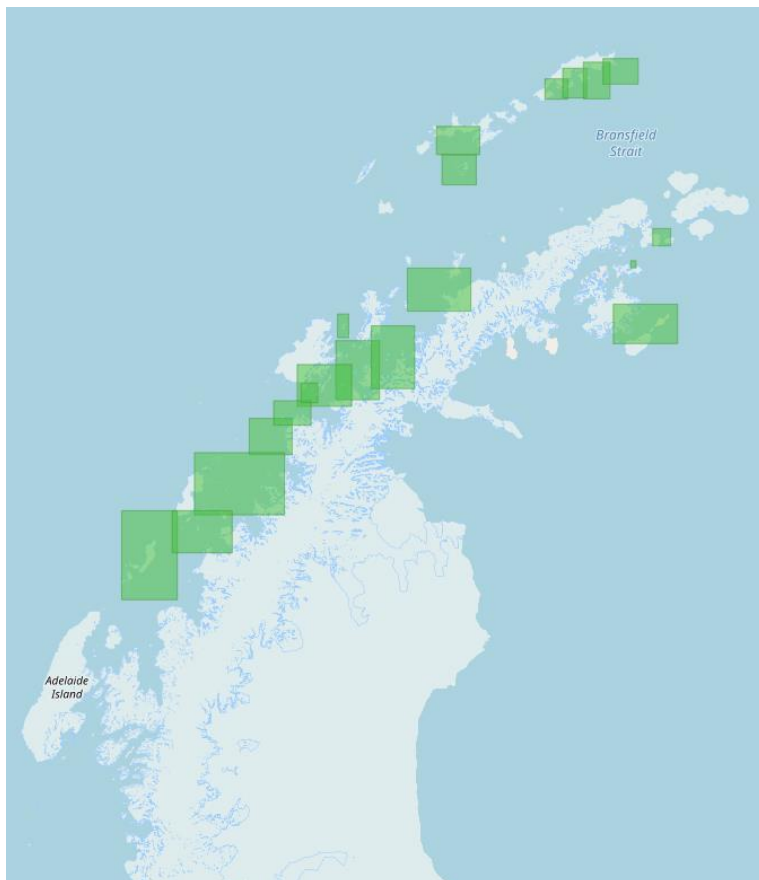
IHO

HCA Region M Scheme Analysis

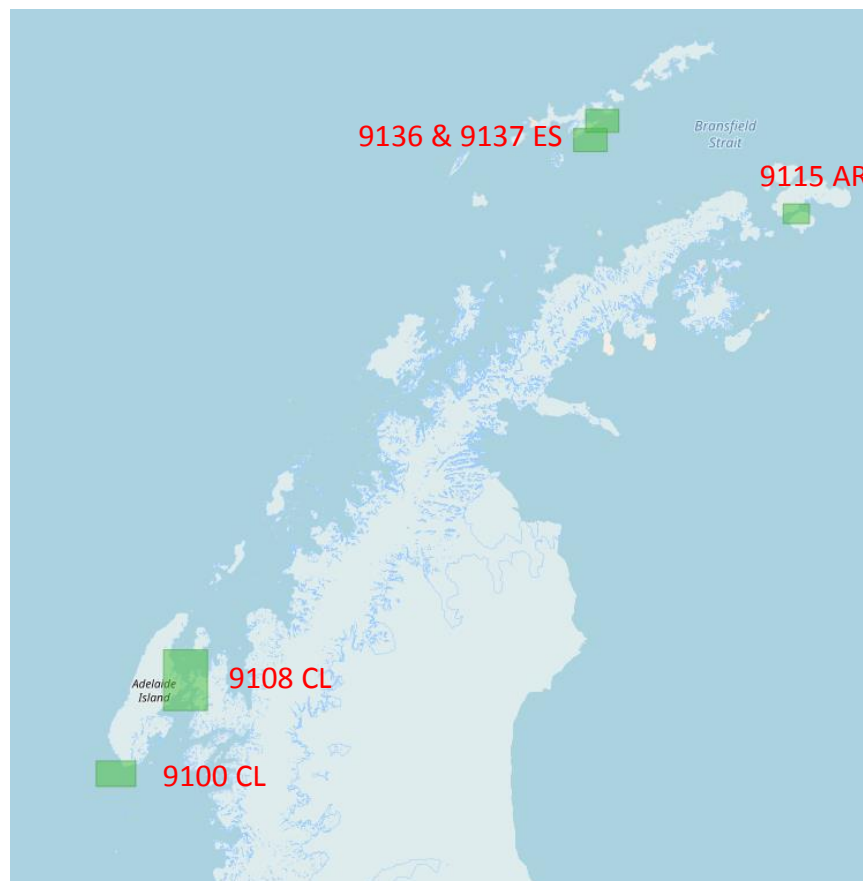
International
Hydrographic
Organization

Approach Scheme Analysis

Produced



Schemed



What is required to complete scheme?
Data?
Resource?

HCA-17, VTC, 14 June 2021

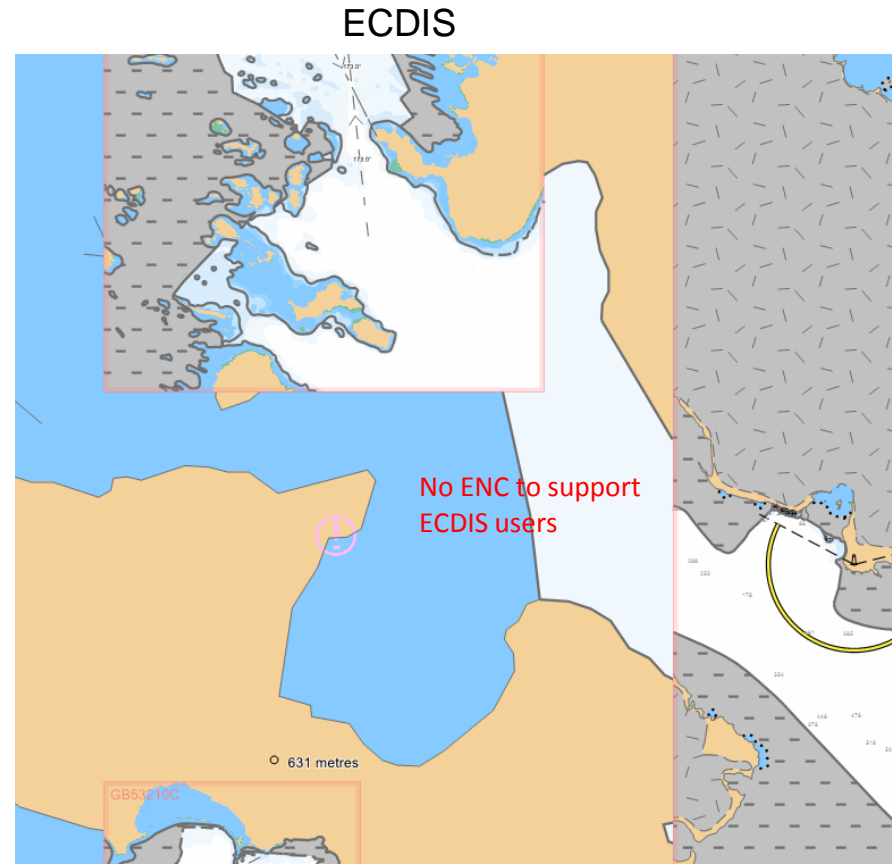
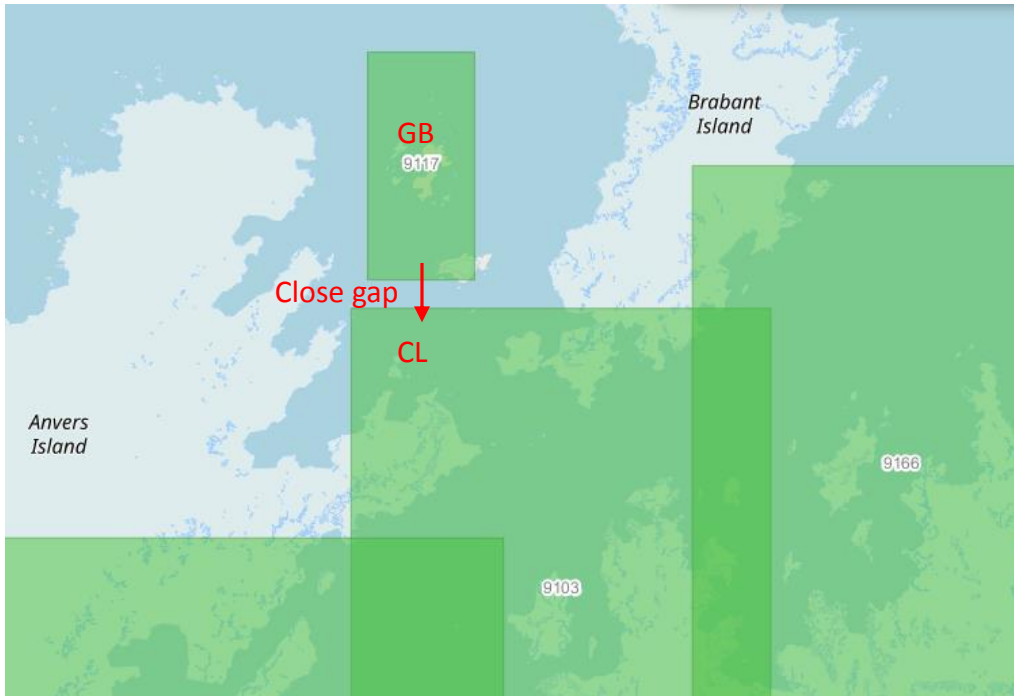


IHO

HCA Region M Scheme Analysis

International
Hydrographic
Organization

Coastal ENC Gap Analysis – English Strait



HCA-17, VTC, 14 June 2021

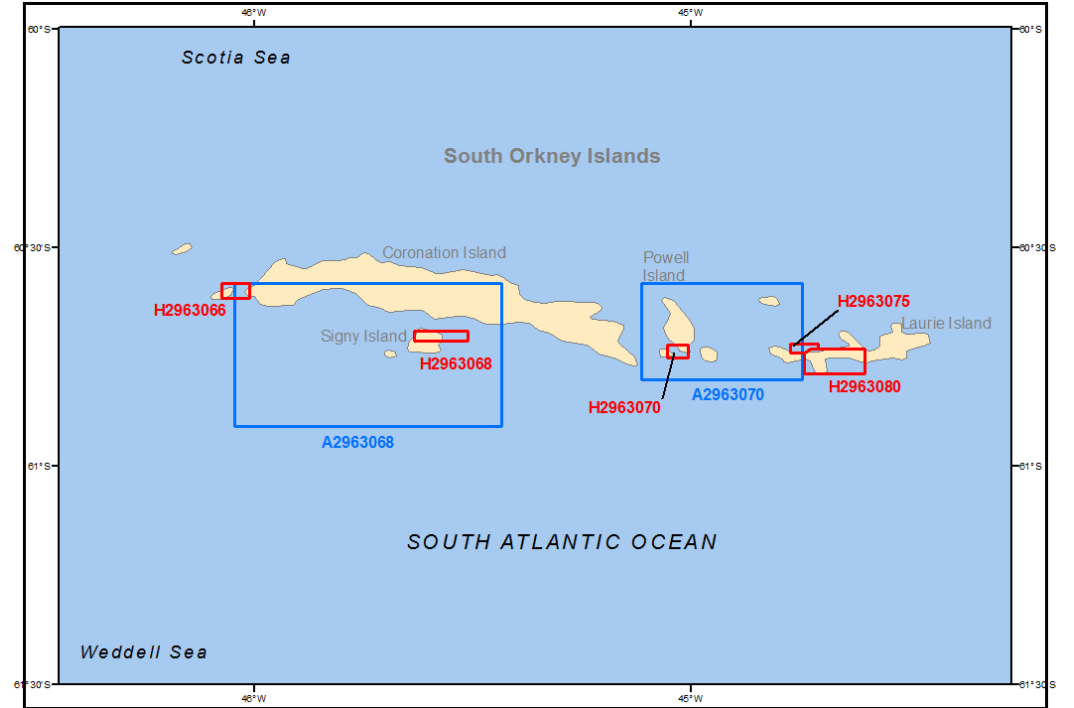
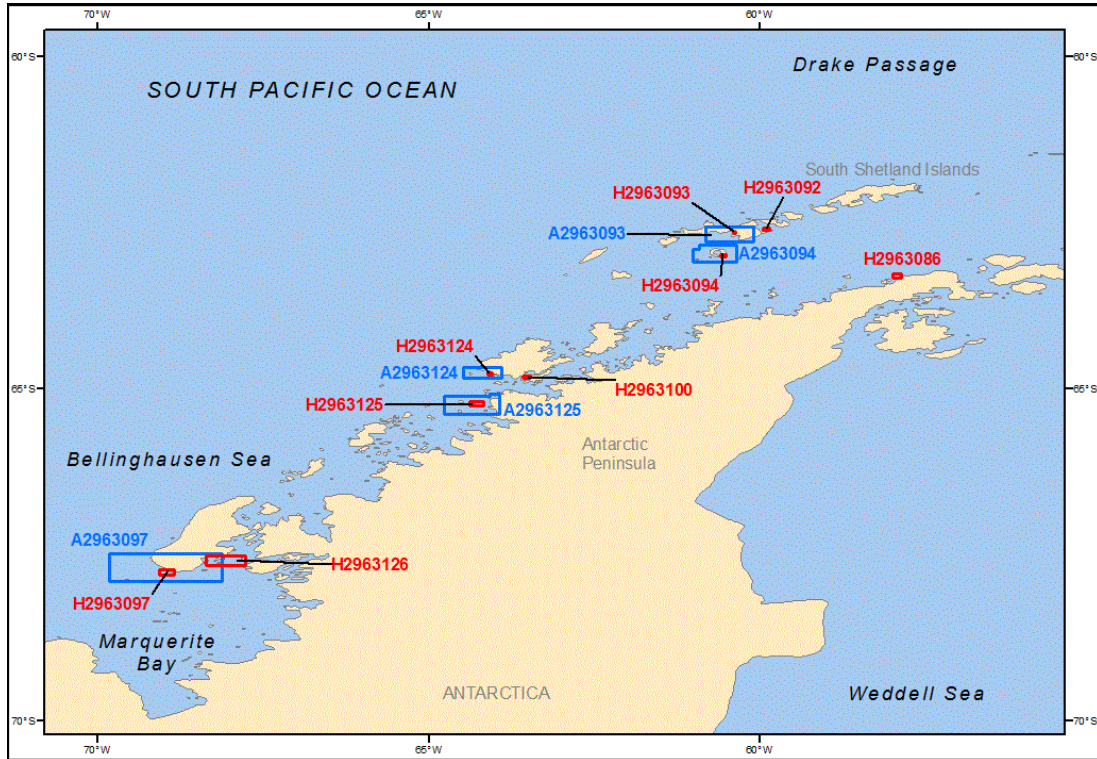


IHO

HCA Region M Scheme Analysis

International
Hydrographic
Organization

HCA16 DNC Proposal by US
Convert DNCs to ENCs



HCA-17, VTC, 14 June 2021



IHO

HCA Region M Scheme Analysis

Overlap Report

International
Hydrographic
Organization

IC-ENC REGIONAL HYDROGRAPHIC COMMISSION OVERLAP REPORT - HYDROGRAPHIC COMMISSION FOR ANTARCTICA - MAY 2021											
RENC Membership	RHC	ENC 1	ENC 2	Usage Band	ENC 1 Scale	ENC 2 Scale	Overall Severity of Risk	Justification	Action requested	HPWG Comment	
IC-ENC	HCA	CL4MA956	GB403207	4	45000	45000	LOW	Area of little SOLAS traffic, covered by UNSARE on both cells. Minor differences between content.	HO requested to clip NC, or liaise with IC-ENC	Resolved since HCA16 UK requested CL to clip. UK clipped back in area of main channel where data was the same.	
IC-ENC	HCA	CL4MA957	GB403207	4	45000	45000	LOW	Overlap only covers LNDARE and UNSARE, with very little SOLAS traffic expected within the area.	HO requested to clip NC, or liaise with IC-ENC	Resolved since HCA16 Unsurveyed on CL cell, passage soundings on GB cell. Resolved by amendment to comp scale.	
IC-ENC	HCA	GB203572	RU2A1AD0	2	250000	700000	LOW			New for HCA17 Not the same comp scale	
IC-ENC	SAIHC/HCA	RU1A2K00	AU160060	1	3000000	3500000	LOW	Overlap situated just off the coast of Antarctica, very low levels of traffic. Small scale compilation scale.	Clip to common border	No change since HCA 16	
IC-ENC	SWPHC/HCA	RU1B0PF0	AU160060	1	3000000	3500000	LOW	Overlap is located in the Antarctica, it charts very deep waters. There is a 119m shoal depth which is captured on AU160000 which is not captured on RU1B0PF0. Little traffic as expected.	HOs to discuss and resolve overlaps	No change since HCA 16	
IC-ENC	SWPHC/HCA	RU1B0PF0	AU160090	1	3000000	3500000	LOW	Overlap is located in the Antarctica, it charts very deep waters. Little traffic as expected.	HOs to discuss and resolve overlaps	No change since HCA 16	
IC-ENC	SWPHC/HCA	RU1B0PF0	AU160120	1	3000000	3500000	LOW	Overlap is located in the Antarctica, it charts very deep waters. Little traffic as expected.	HOs to discuss and resolve overlaps	No change since HCA 16	
IC-ENC - NON RENC	HCA	RU2BNM40	JP20ODD0	2	700000	700000	LOW (U)	Overlap situated just off the coast of Antarctica, very low levels of traffic. Small scale compilation scale.	HOs to discuss and resolve overlaps	No change since HCA 16	
IC-ENC	HCA	CL4MA960	GB400445	4	45000	22000	POTENTIAL (MEDIUM)	General depiction of bathymetry similar between cells, CL cell has a higher area of UNSARE then on the GB cell and UWTROCs not shown.	HO requested to clip NC, or liaise with IC-ENC	Not in service - held by IC-ENC	
IC-ENC	HCA	CL5MA980	GB57211A	5	22000	12000	POTENTIAL (UNASSESSED)		HO requested to clip NC, or liaise with IC-ENC	Not in service held by IC-ENC	

HCA-17, VTC, 14 June 2021

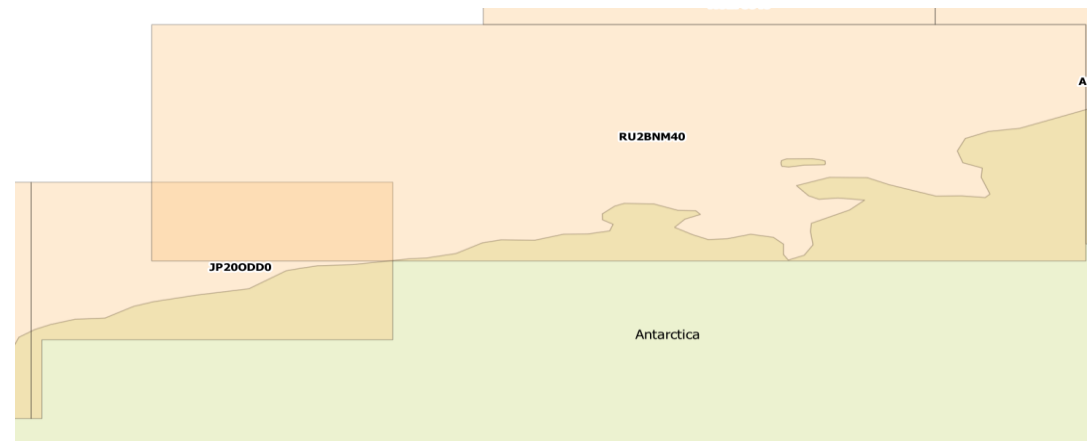
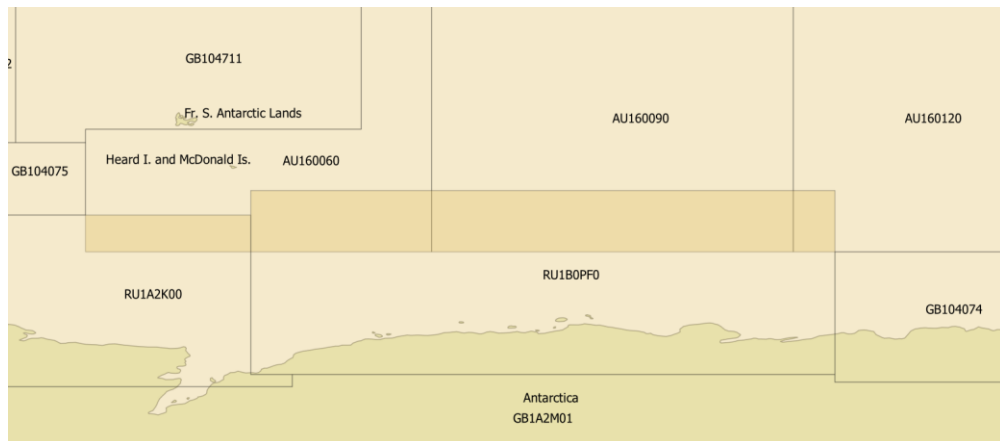
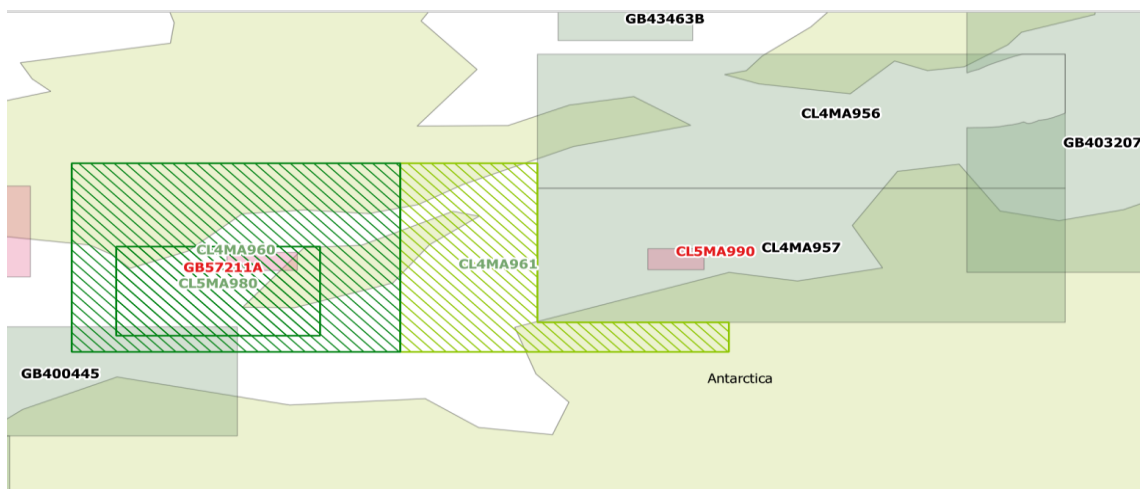


IHO

HCA Region M Scheme Analysis

International Hydrographic Organization

Overlap Report - Diagrams



HCA-17, VTC, 14 June 2021



IHO

HCA Region M – Recommendations for HCA

International
Hydrographic
Organization

Proposed Recommendation

1. RoK to provide INT9103 update to regional co-Ordinator.
2. UY & CL to provide update on Artigas data sharing and ENC proposal to regional co-ordinator.
3. PE to consider distribution of Mackellar ENC.
4. Member states to inform co-ordinator of production of new cells in region prior to release (S11 A 3.9). This is particularly important when ENCs are not related to the INT chart scheme.
5. Member States to refer to the HCA Survey Plan prior to product publication to ensure latest data is used.
6. Provide update on the production of schemed charts and associated ENCs.
7. Chile to provide feedback on option proposed options for INT9161 & 9162.
8. Argentina & Chile to provide feedback on option proposed options for INT 9157.
9. Consider US DNC to ENC proposal.
10. Review Overlap Report.