



18th Conference of the IHO Hydrographic Commission on Antarctica

HPWG Chair – Proposed Peninsula Shipping Routes - Record of Amendments

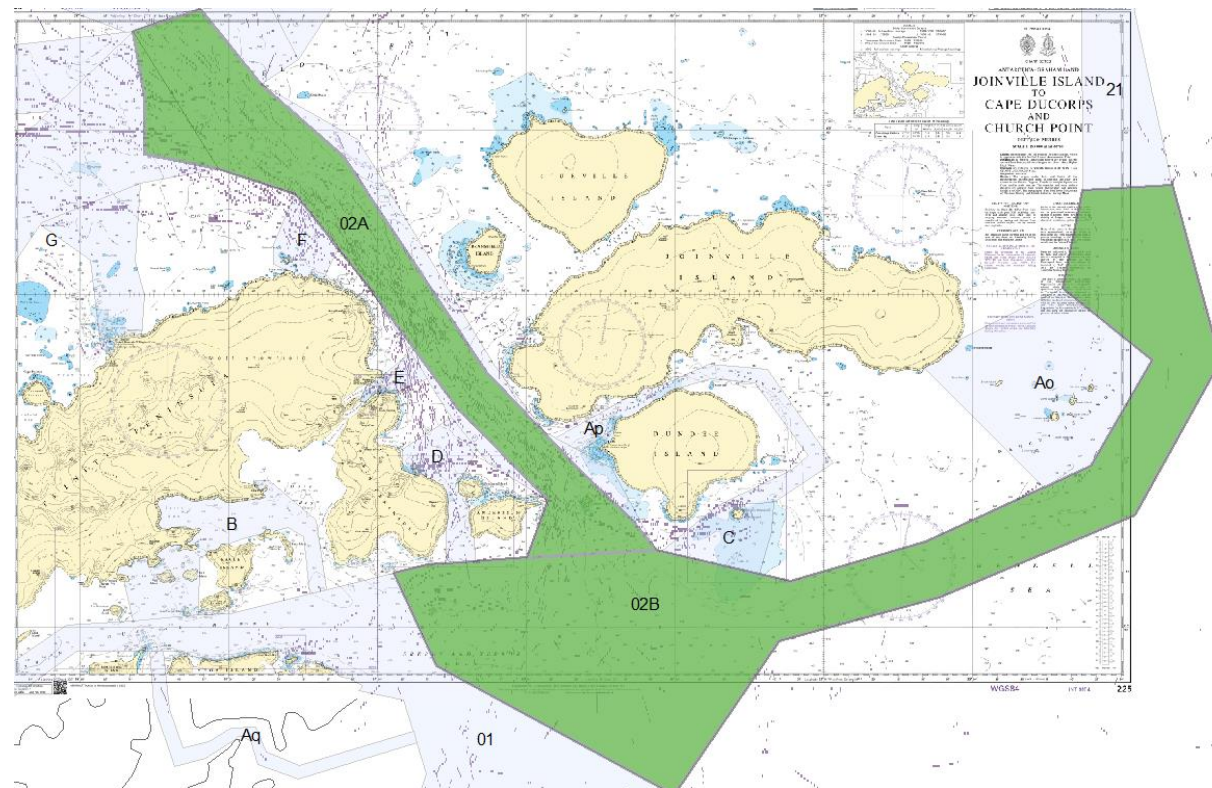
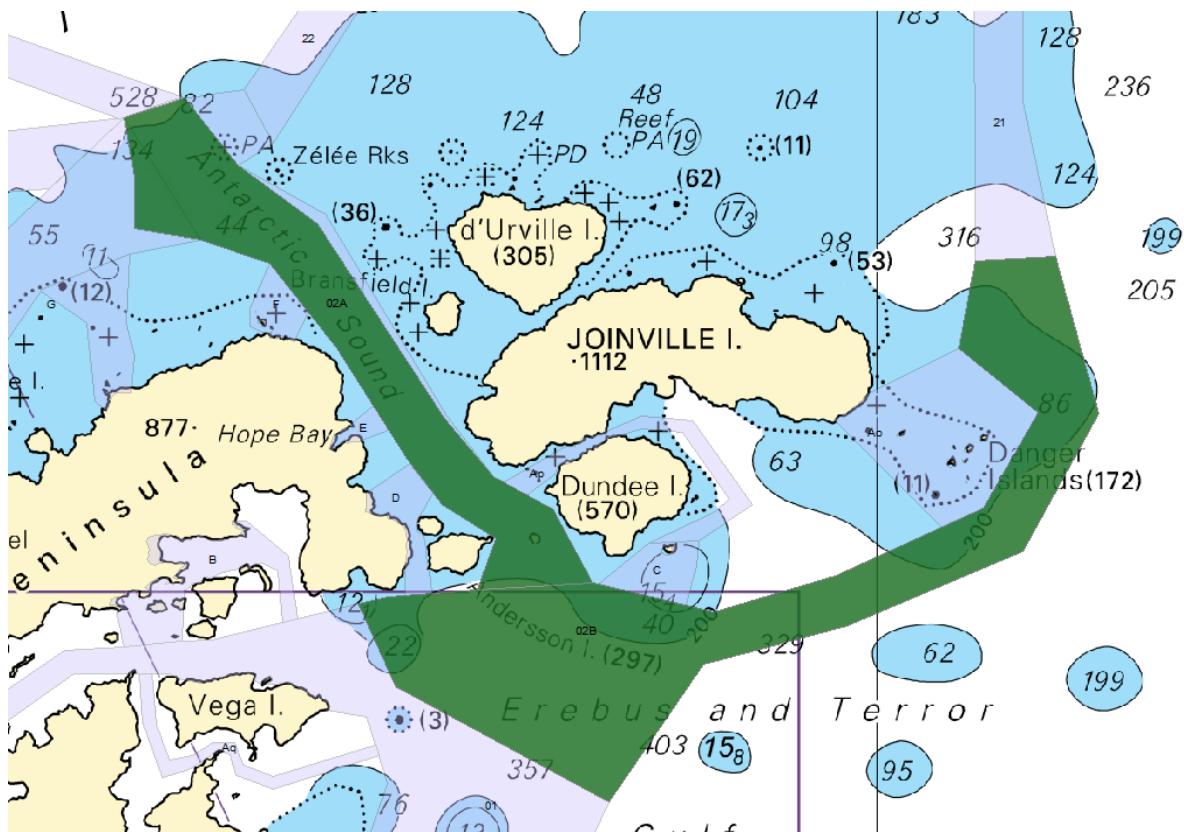
HCA 17 Agenda item 17-07.2A&B

HCA 18 Agenda item 18-07.3B



MSR 2 - Joinville Island Circular Route (INT 9154 UK)

- Minor limit refinements
- Amended into 2 sections to improve reporting in Peninsula Survey plan:
 - 2A - Antarctic Sound
 - 2B – Andersson Island to Danger Islands



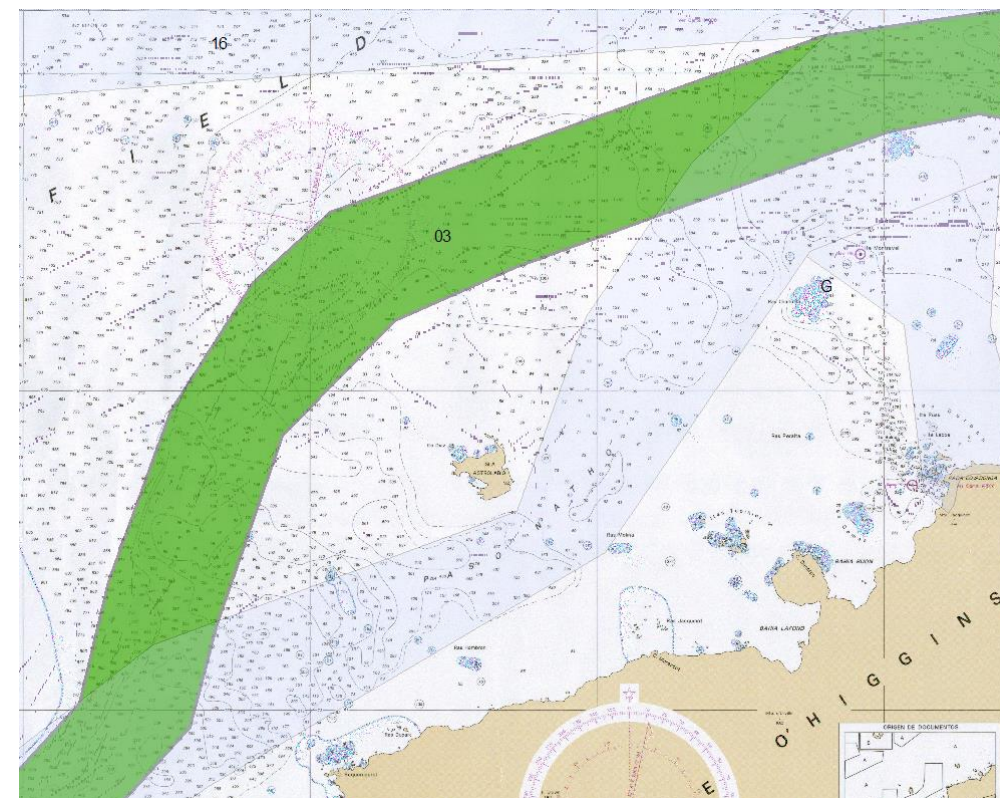
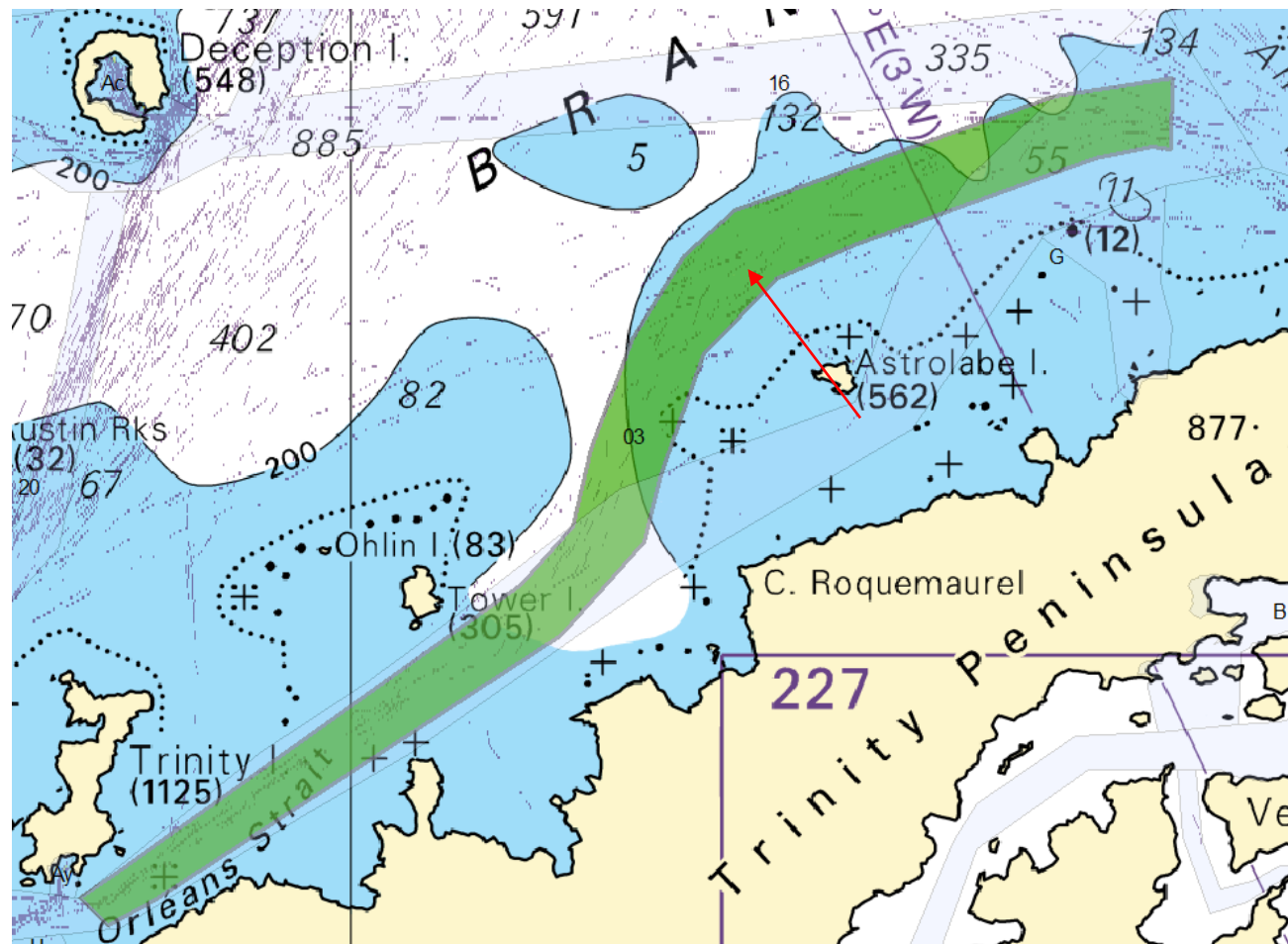


IHO

International
Hydrographic
Organization

MSR 3 - Orleans Strait to Antarctic Sound (INT9155 CL)

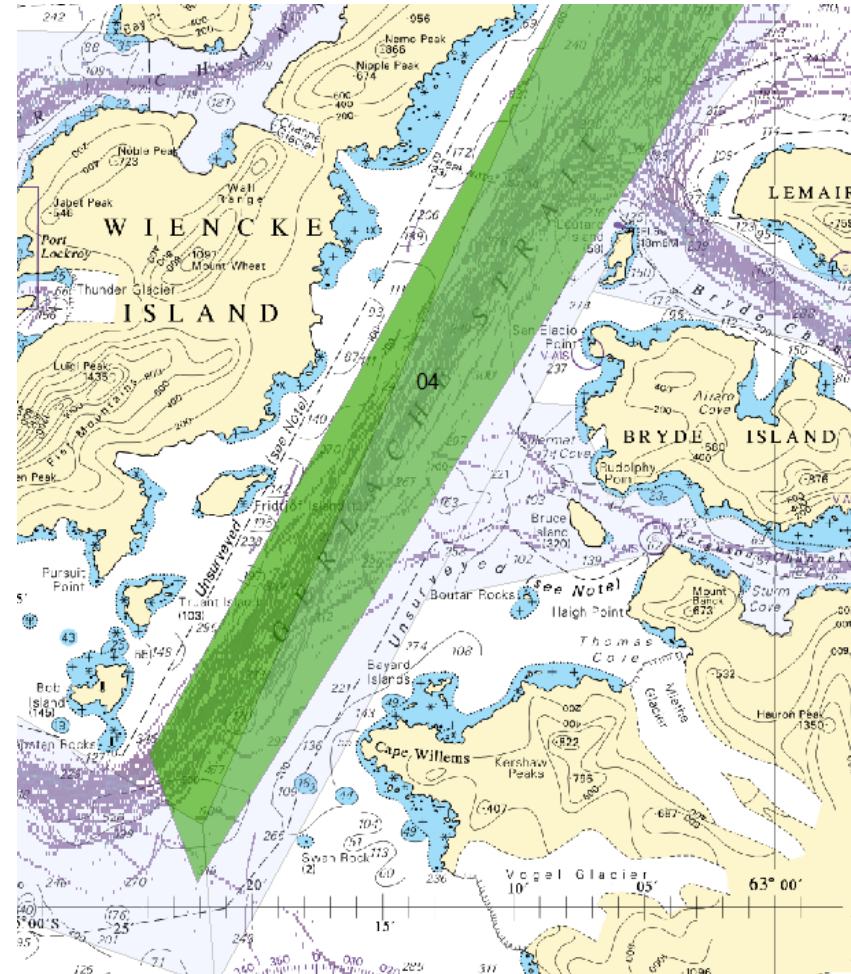
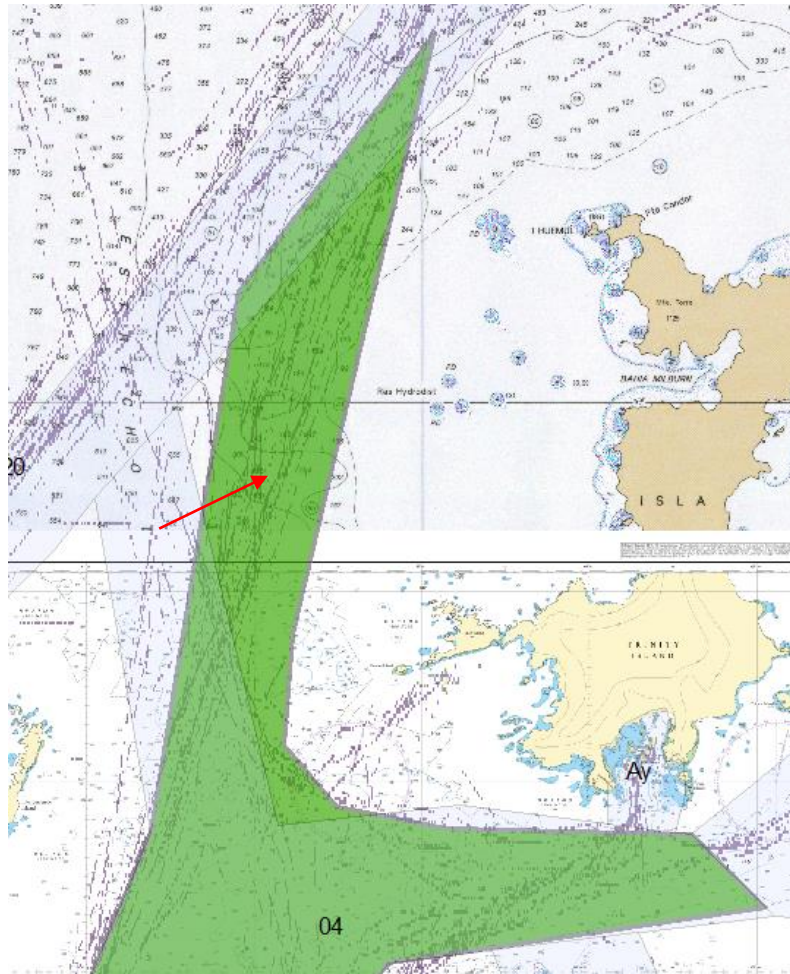
- Amended to reflect traffic north of Astrolabe Island





MSR 4 - Gerlache Strait (INT 9103/4 CL, 9165 UK, 9156 AR, 9157 CL)

- Northwest intersection with MSR 20 amended
- Southern end amended



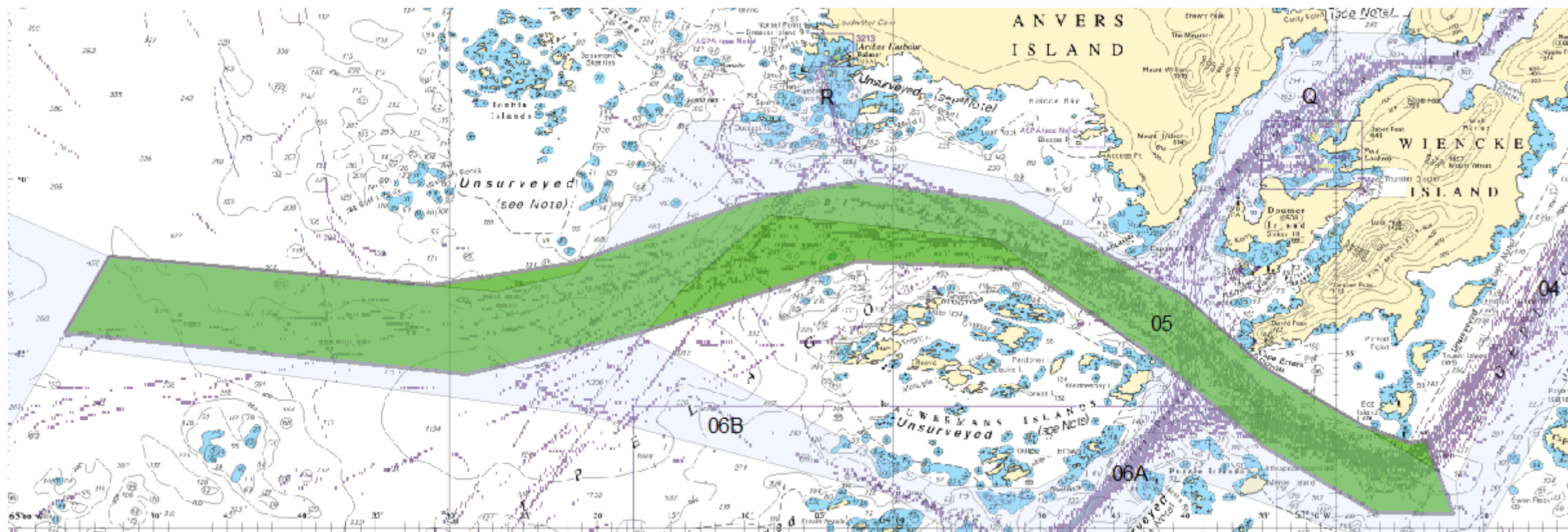


IHO

International
Hydrographic
Organization

MSR 5 - Bismarck Strait (INT 9158 UK)

- Amended northwest of Wauermans Islands to reflect traffic taking a direct route between Cape Lancaster and MSR 14



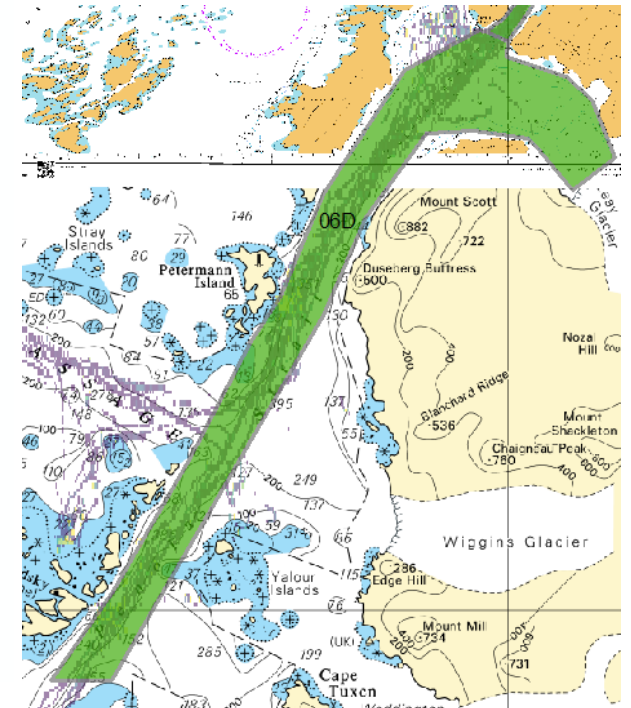
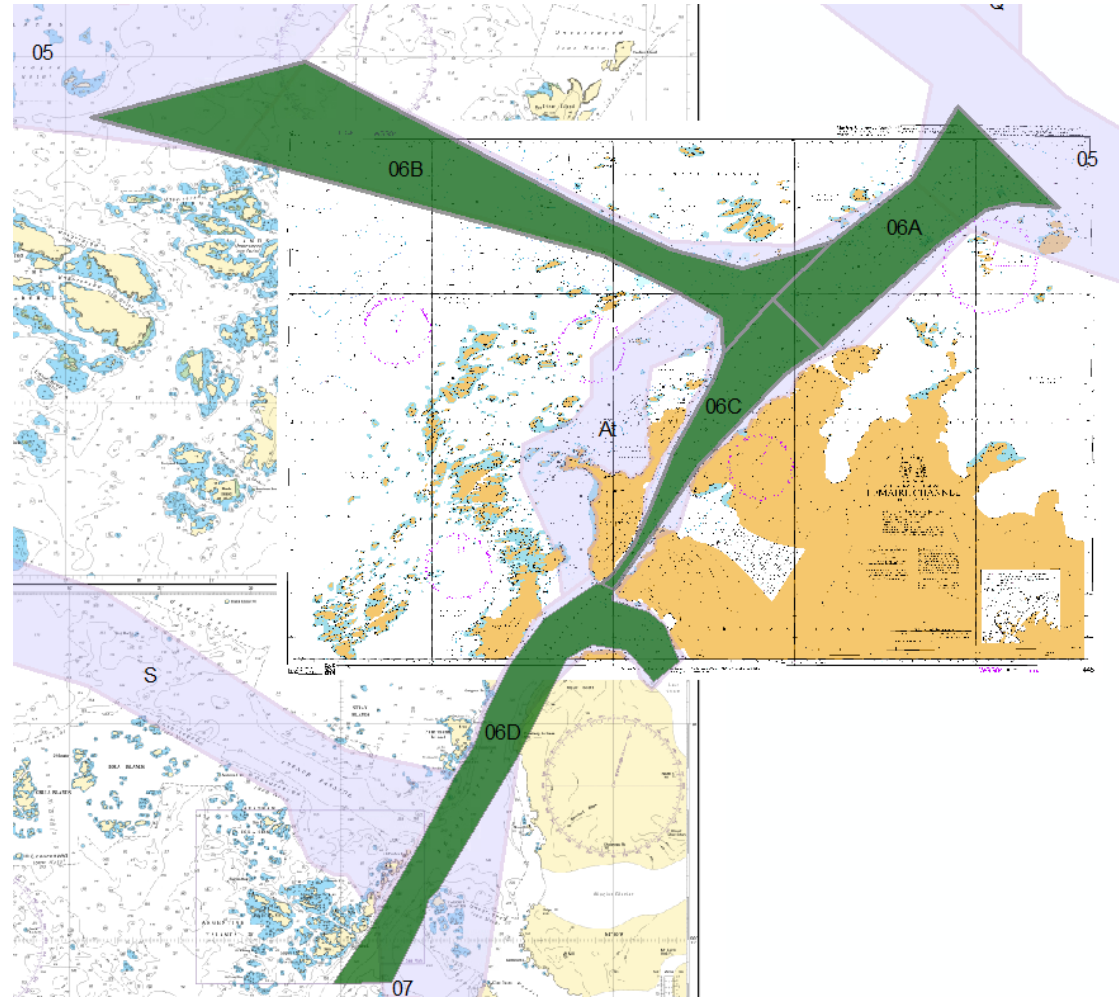
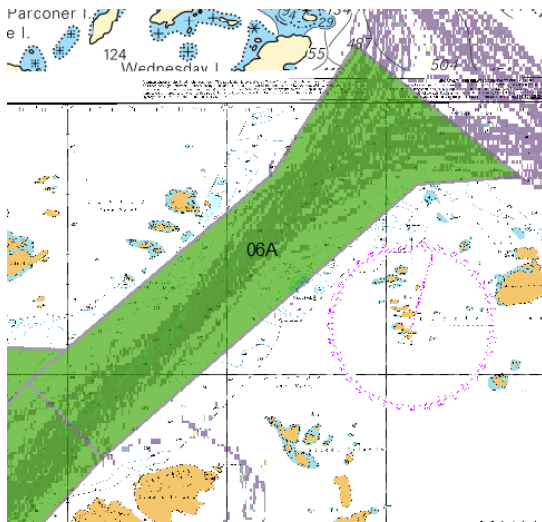


IHO

International
Hydrographic
Organization

MSR 6 - Lemaire Channel (INT 9106, 9118, 9158 UK)

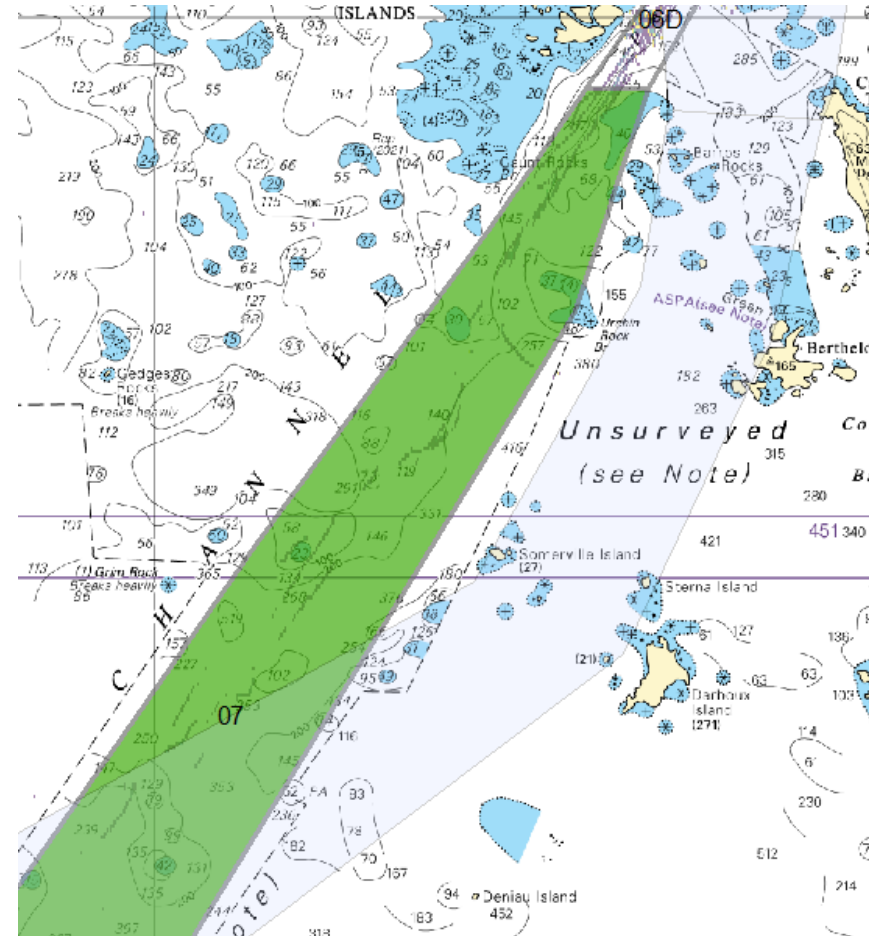
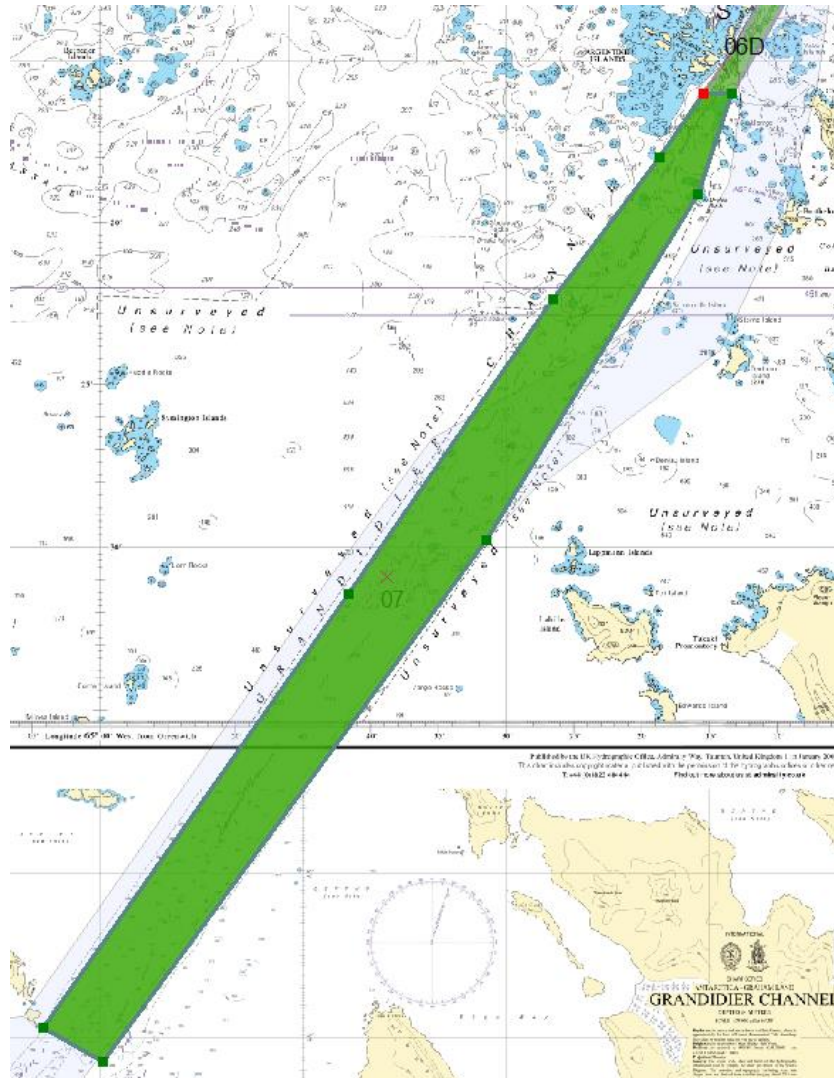
- Amended into 4 sections to improve reporting in Peninsula Survey plan:
 - 6A Butler Passage
 - 6B Nimrod Passage
 - 6C Lemaire Channel
 - 6D Penola Strait





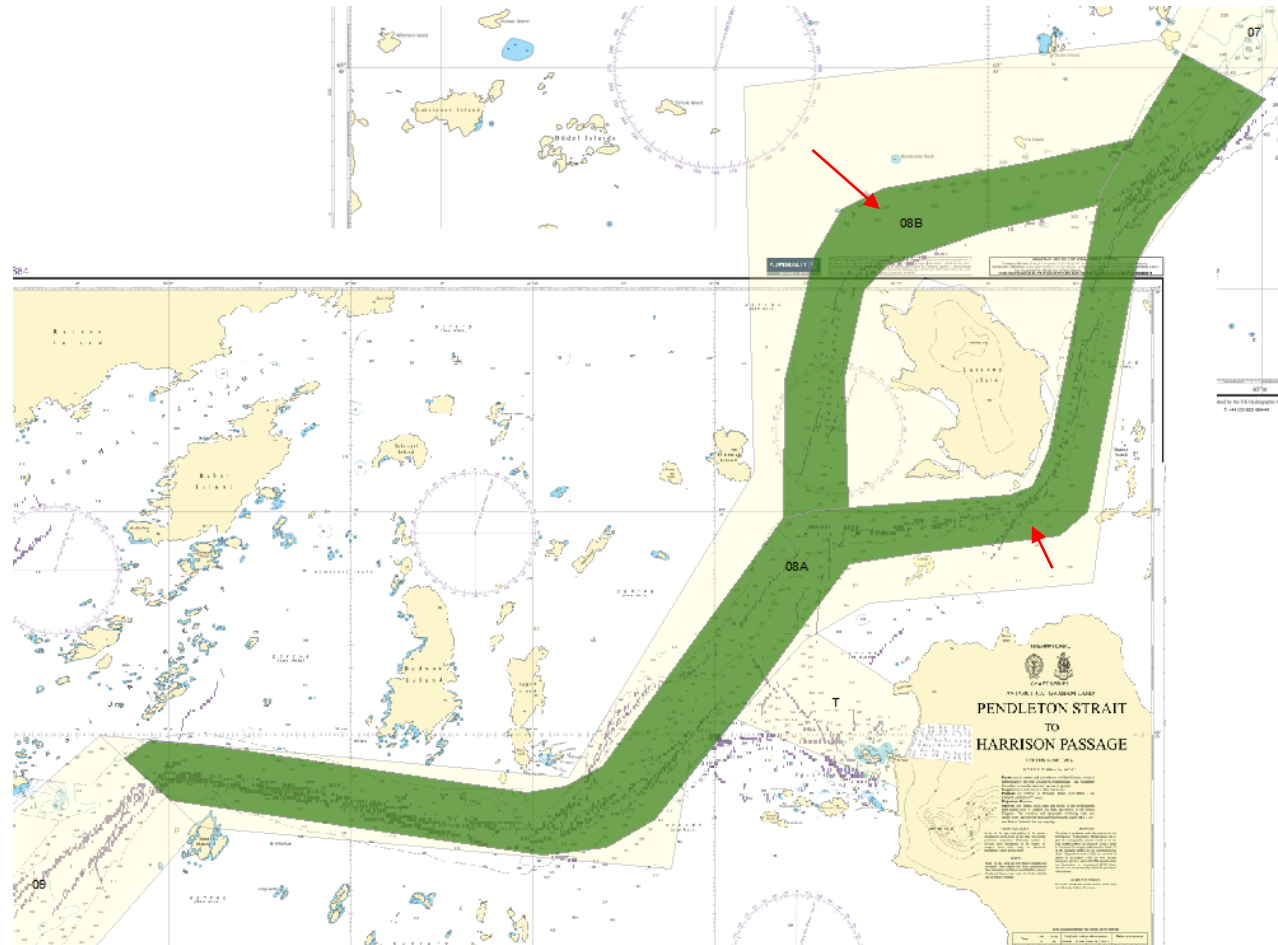
MSR 8 -Grandidier Channel (INT9158, 9132,9519 UK)

- Amended northern limit to reflect traffic and underlying data



MSR 8 – Cape Garcia to Jagged Island (INT 9107 & 9159 UK)

- Amended into 2 routes:
 - 8A Harrison, Ritchie & Mudge Passage
 - 8B Maskelyne Passage



HCA-18, May 2022

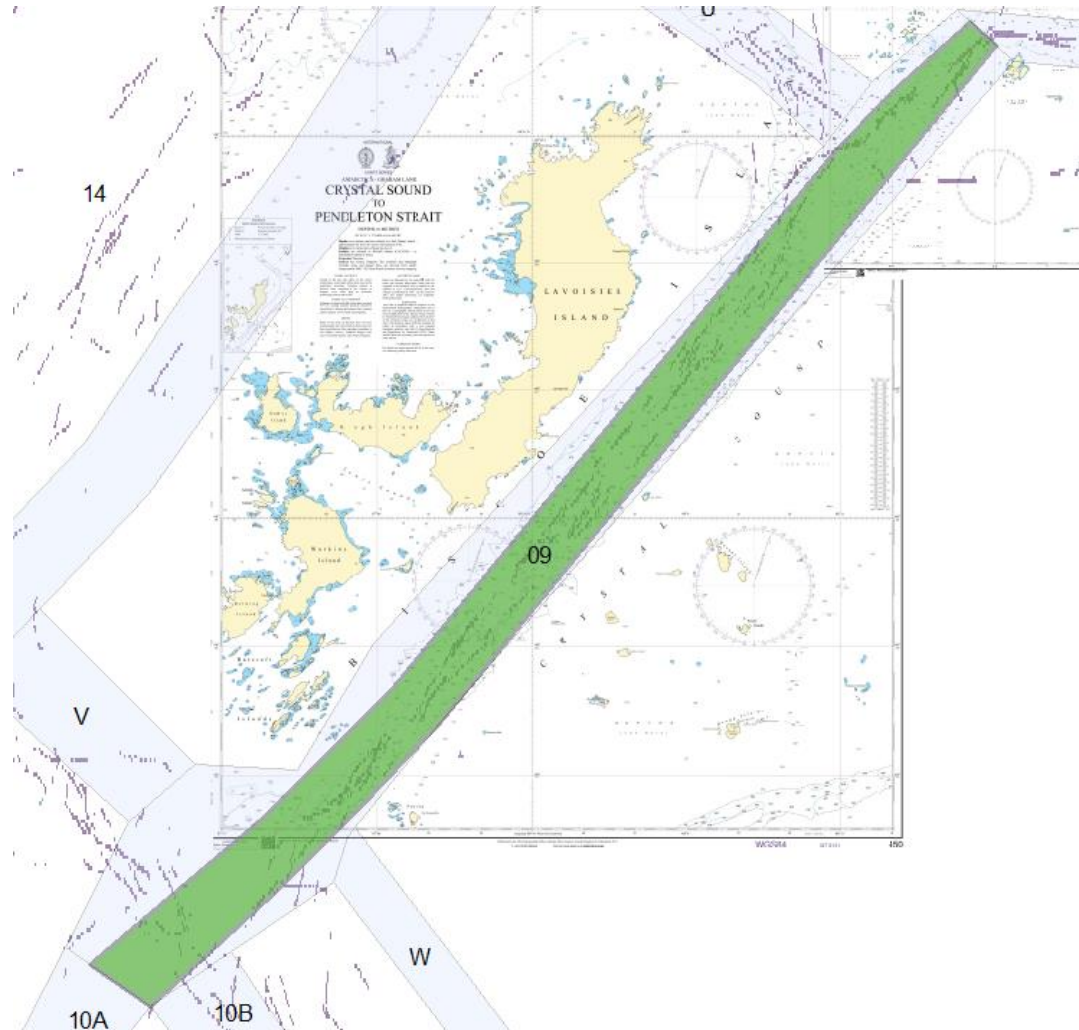


IHO

International
Hydrographic
Organization

MSR 9 – Crystal Sound (INT9160 UK)

- Southern end amended to align with amended Branch Corridor ‘V’



IHO

International
Hydrographic
Organization



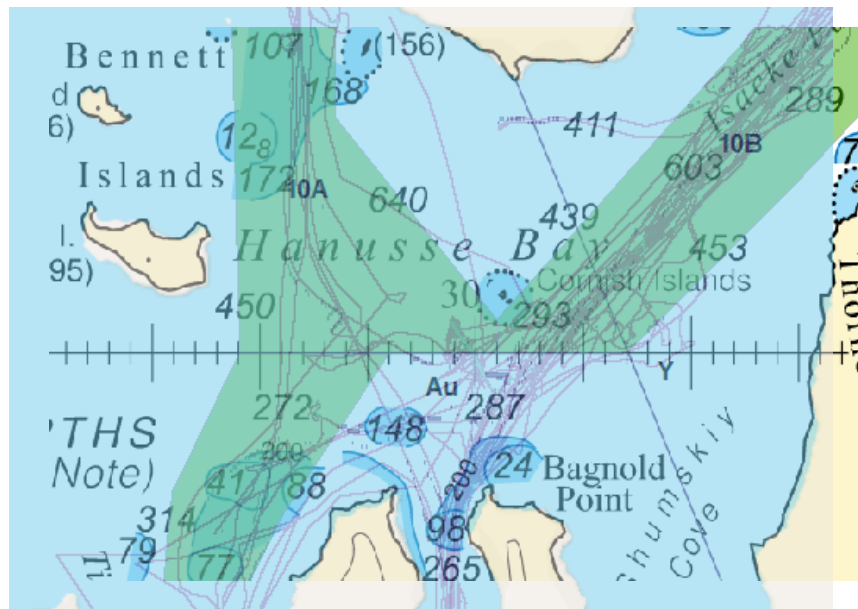
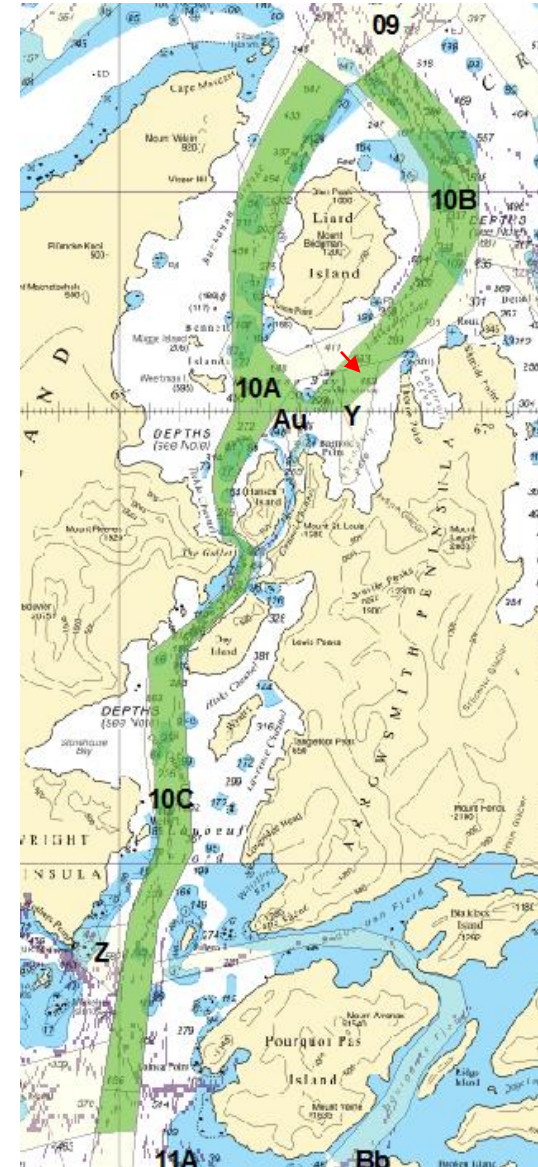
MSR 10 – Liard Island to Rothera (INT 9161 & 9108 CL, 9163 UK)

Amended into 3 routes:

- 10A Liard Island - Buchanan Passage
- 10B Liard Island - Isacke Passage
- 10C Hanusse Bay to Pourquoi Pas Island

Amended south of Cornish Islands and to reflect charted data and AIS throughtout

UK2021/22 surveys to support 10A





IHO

International
Hydrographic
Organization

MSR 11 – Marguerite Bay (INT 9163 UK & 9164 CL)

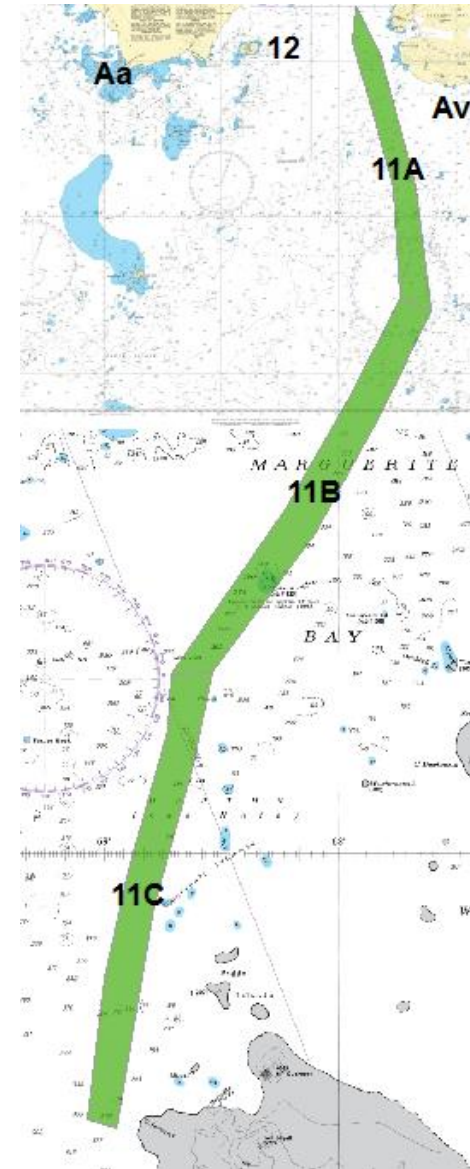
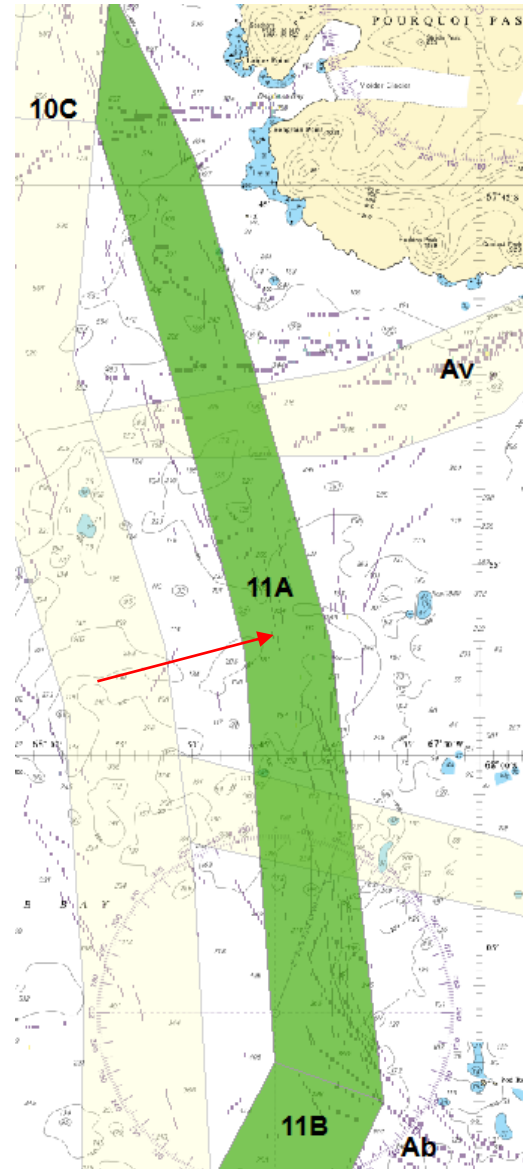
Adjusted eastwards to reflect AIS

Amended into 3 routes:

- 11A Porquoi Pass Island – Millerand Island
- 10B Marguerite Bay (North)
- 10C Marguerite Bay (South)

Monitor 10B and 10C positions relative to increased traffic. May need future adjustments when data supports.

UK2021/22 surveys



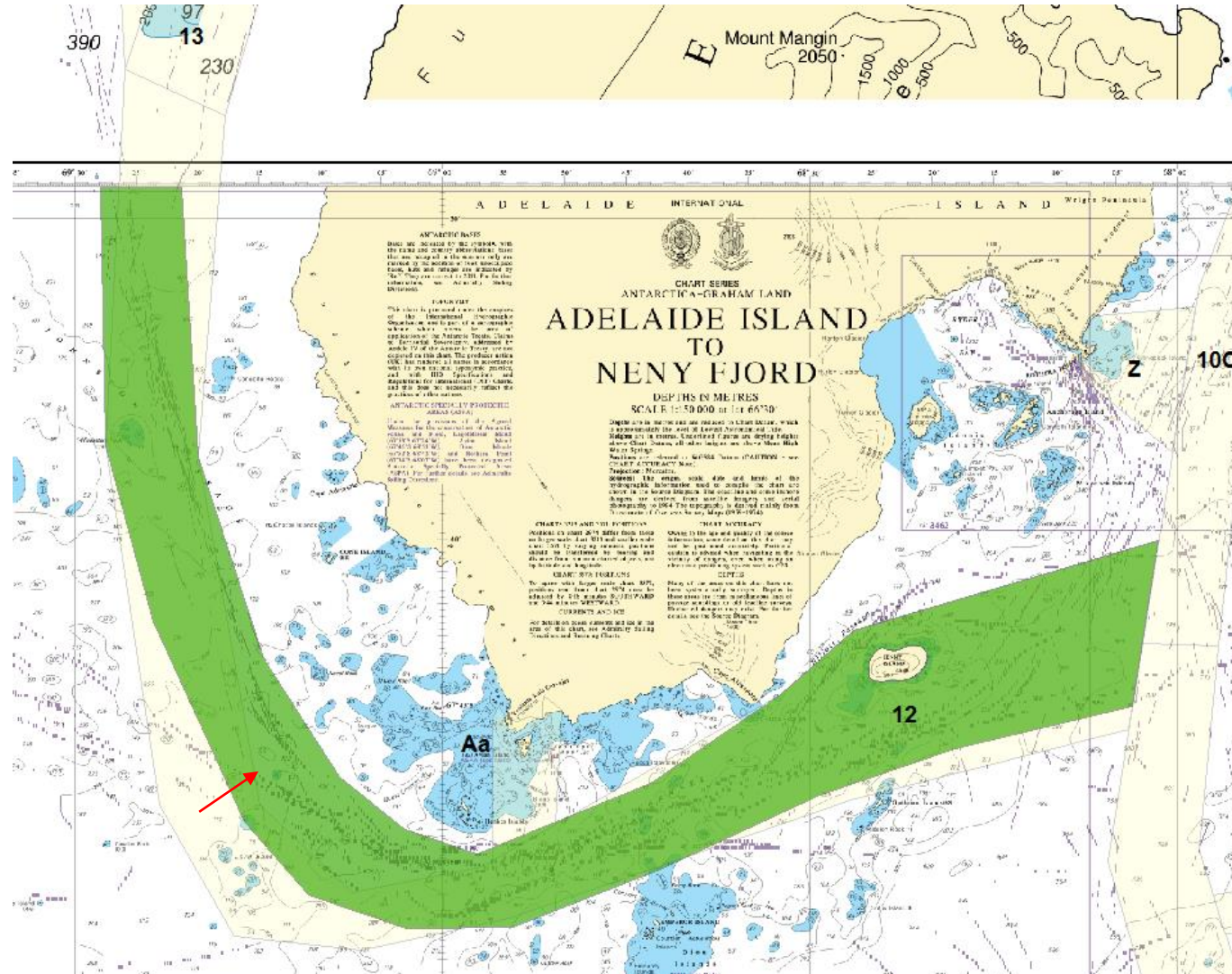
MSR 12 – Woodfield Channel INT 9163 (UK)

Adjusted eastwards to reflect AIS adjacent to Lord Bank



IHO

International
Hydrographic
Organization



MSR 13 – Johnston Passage to Matha Strait INT 9163 (UK)

Renamed

Adjusted in the vicinity of Matha Strait to reflect charted data and AIS

Amended into 2 routes:

13A Johnston Passage to Matha Strait (North)

13B Johnston Passage to Matha Strait (South)



HCA-18, May 2022

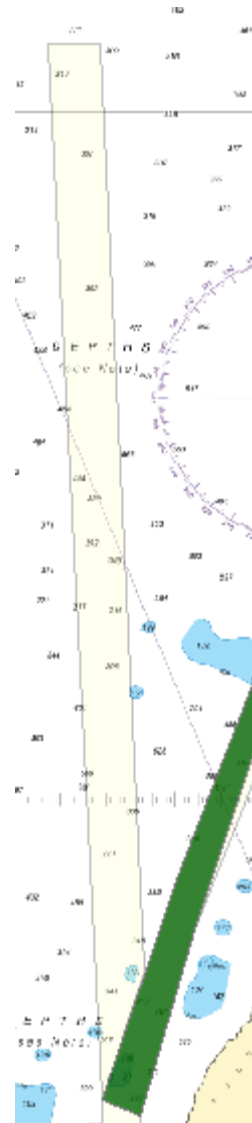


IHO

International
Hydrographic
Organization

MSR 13a – Northern Transit from Adelaide Island (INT9162 CL)

Route Deleted



HCA-18, May 2022



IHO

International
Hydrographic
Organization

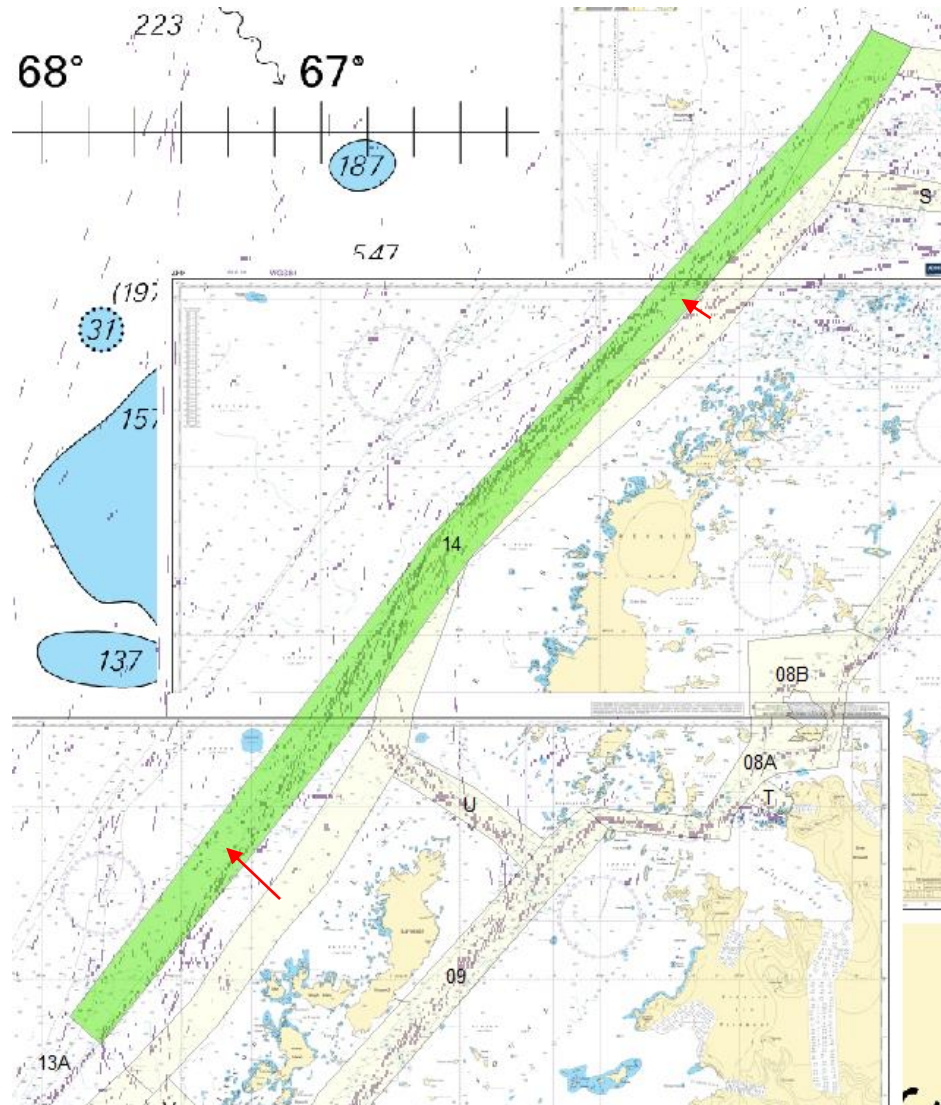
MSR 14 – Matha Strait to Hugo Island (INT9160, 9519 & 9158 UK)

Amended to reflect charted data and traffic



IHO

International
Hydrographic
Organization

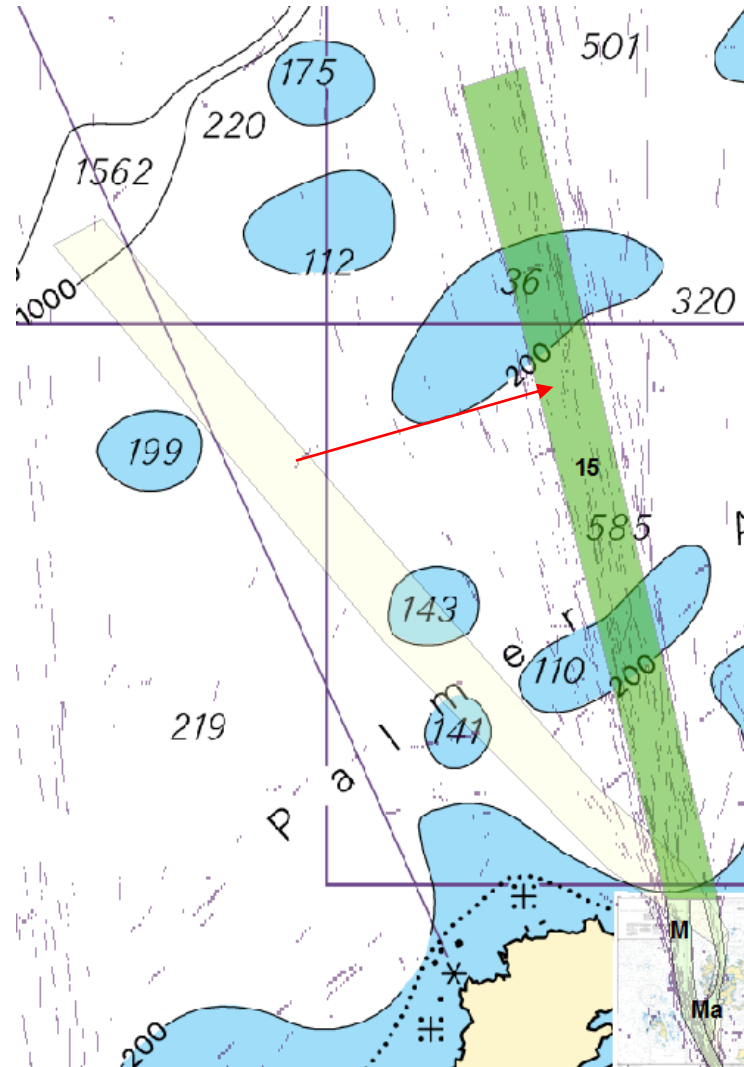


HCA-18, May 2022



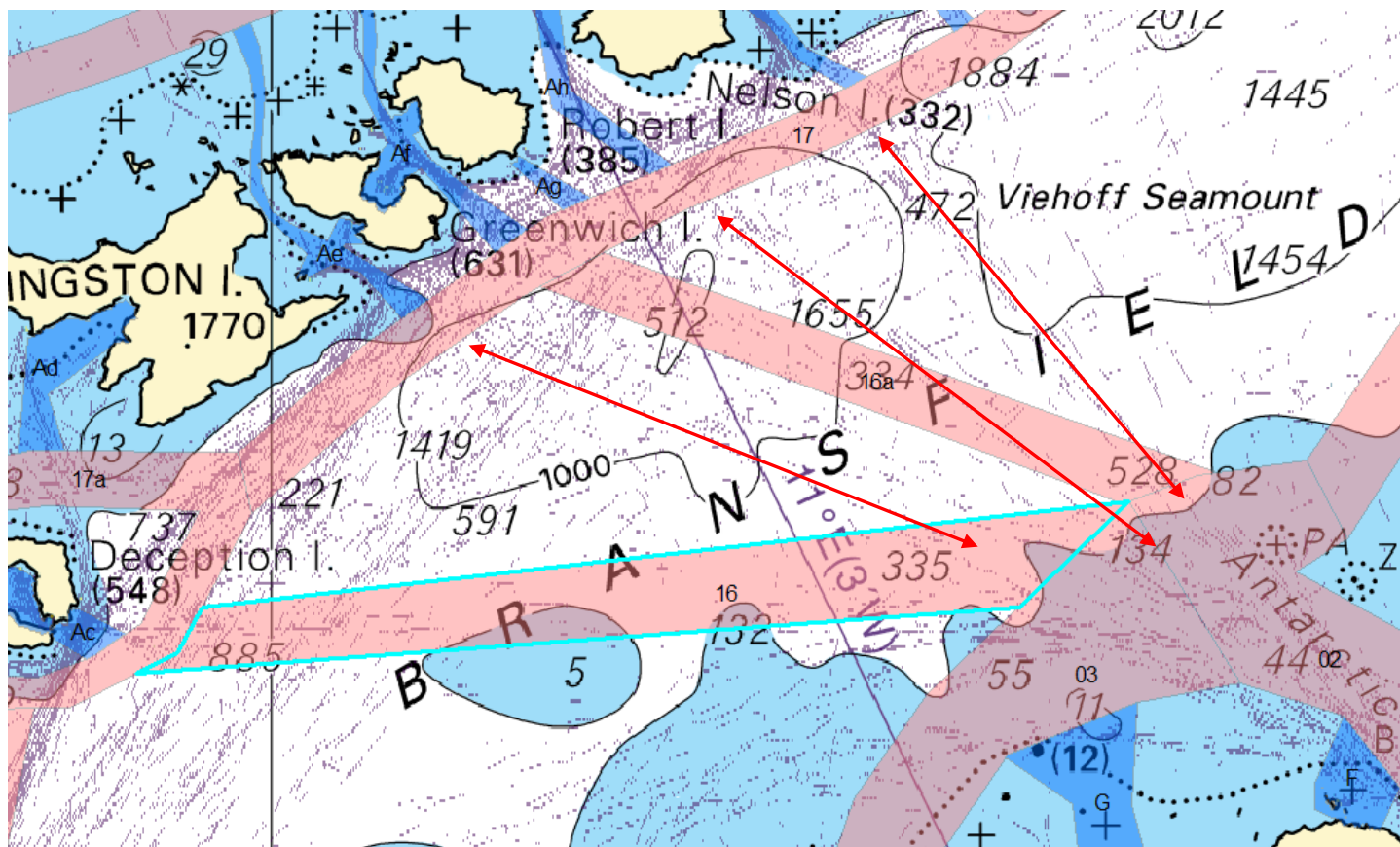
MSR 15 – Exit from Melchior Islands (INT9156 AR, 9158 9159 UK)

- Amended to reflect traffic
- Aligned with amendments to BC 'M'



16. Deception Island to Antarctic Sound & 16a English Strait to Antarctic Sound (INT9151 9152 9154 9155 BR CL & UK)

- Minimal traffic for both deep water routes
- Review priority and requirement in conjunction with other cross strait routes as indicated



Options:

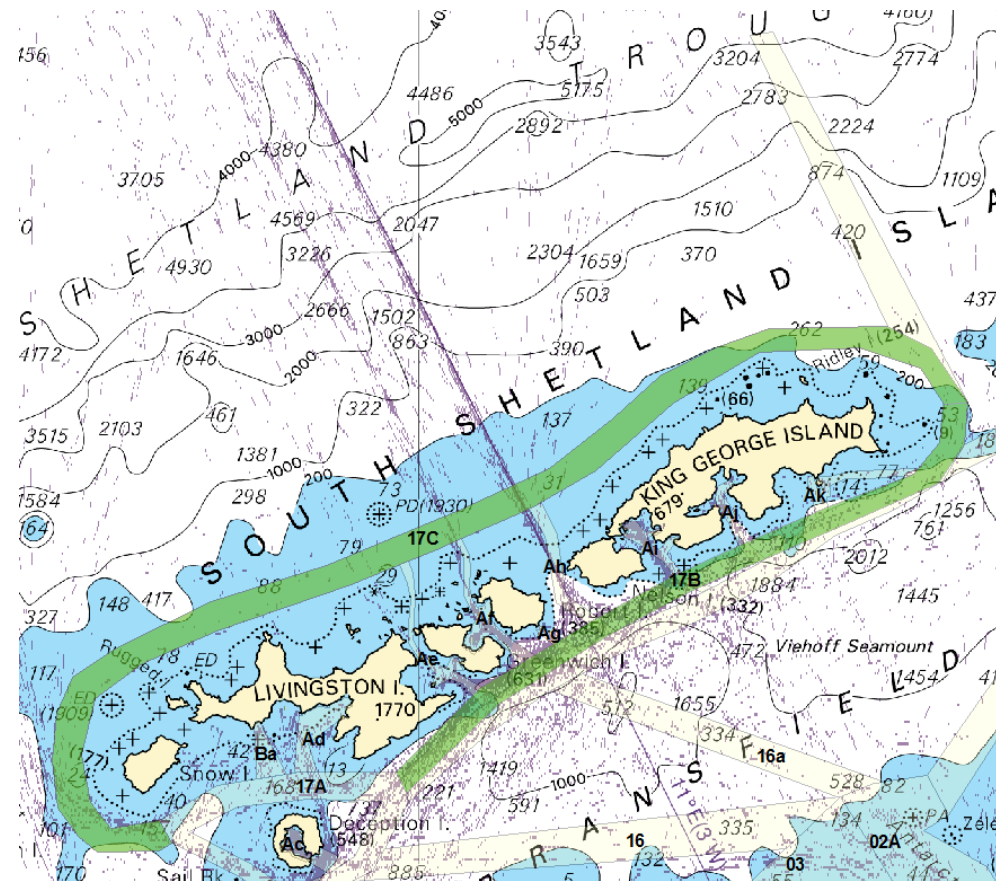
1. Remove requirement
2. Amend to branch corridor





MSR 17 – South Shetland Major Shipping Route (INT 9151 BR/CL)

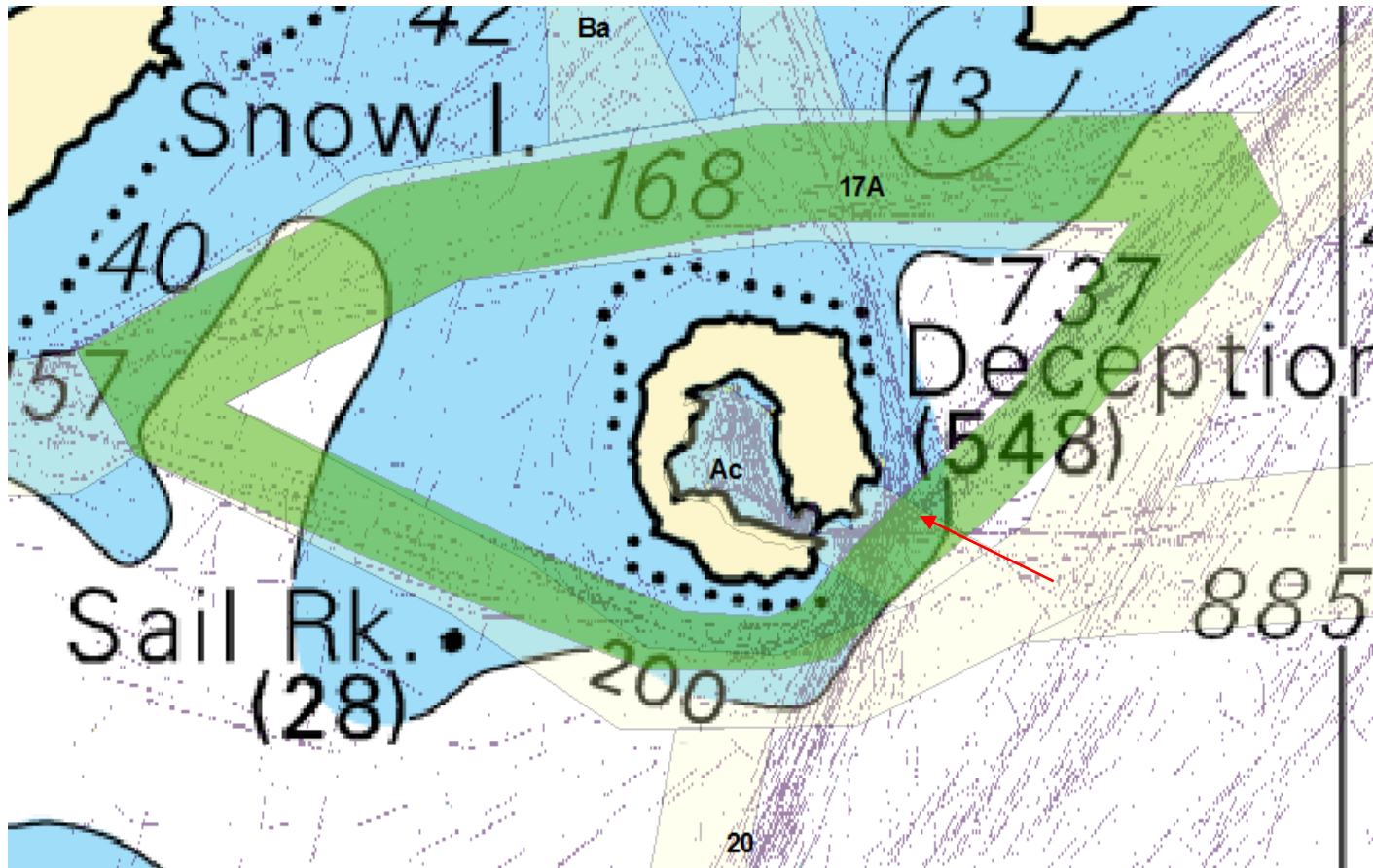
- Deleted north east approach route – no traffic
- Northern and southern sections created to improve management of priorities
- Southern route adjusted closer to shore to reflect traffic data





MSR 17A – Deception Island Circular Route (INT9120 AR)

- Amended to reflect traffic entering and exiting from Neptune Bellows
- Brach Ac to be adjusted



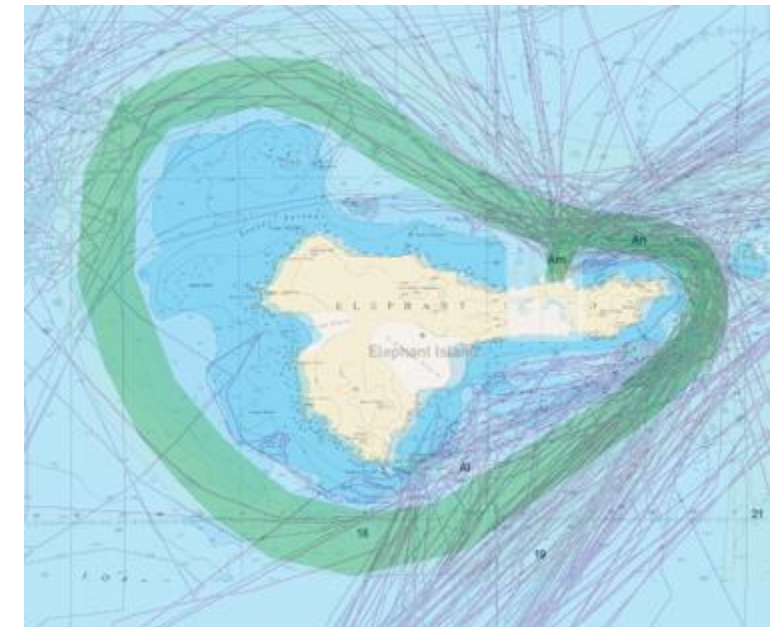
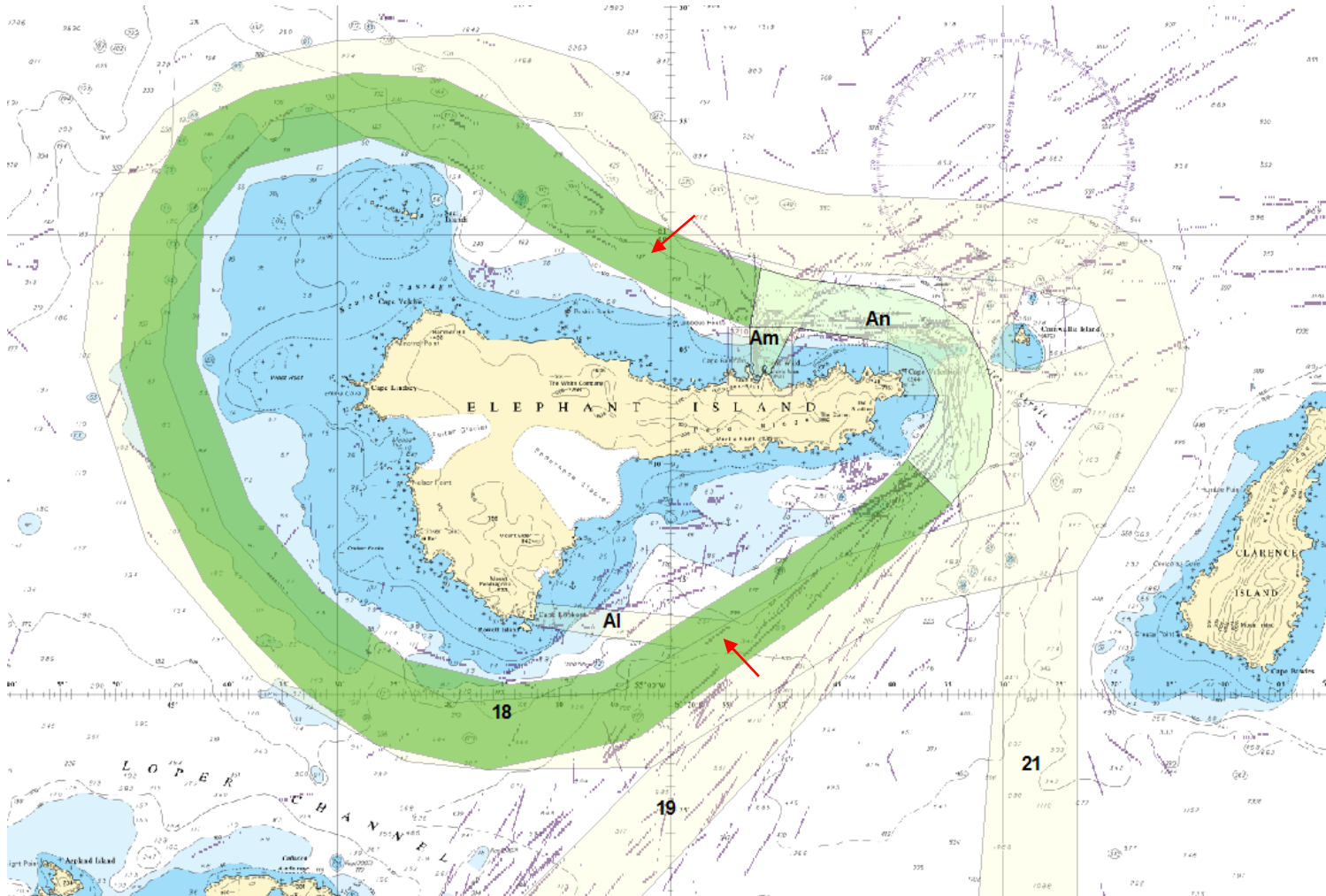


IHO

International
Hydrographic
Organization

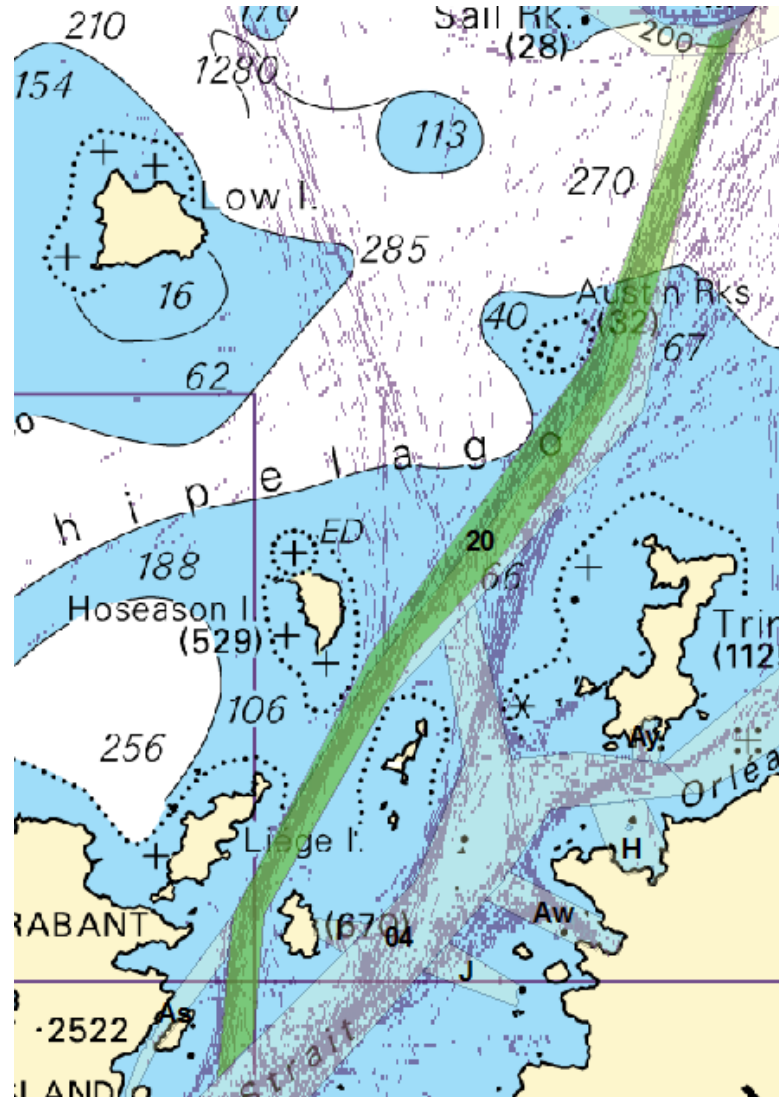
MSR 18 – Elephant Island Major Shipping Route (INT9150 BR)

- Merged with amended Branch Corridor 'An'
- Deleted segment east of Cornwallis island



MSR 20 – Deception Island to Brabant Island (INT9120,9155,9156 & 9157 AR & CL)

- Amended in the vicinity of Austin Rocks to reflect traffic data



HCA-18, May 2022

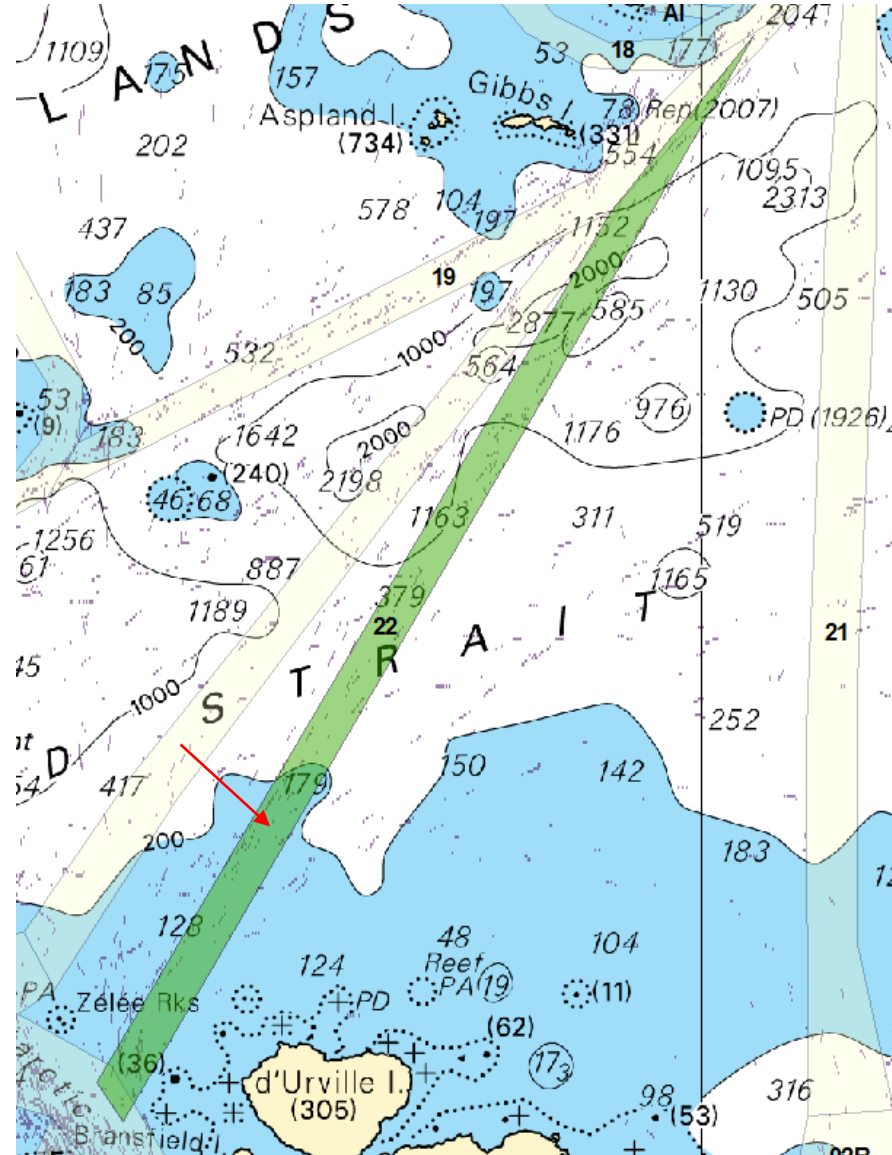


IHO

International
Hydrographic
Organization

MSR 22 – Elephant Island to Antarctic Sound (INT 9150,9151,9154 BR,CL,UK)

- Amended in the vicinity of Zelee Rocks



HCA-18, May 2022



IHO

International
Hydrographic
Organization

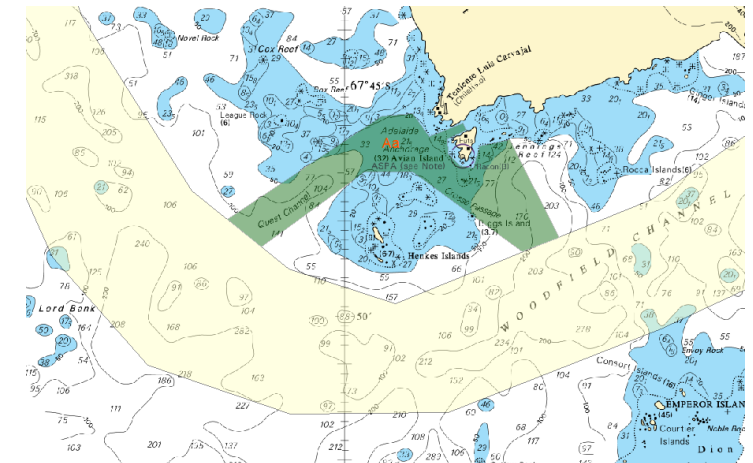
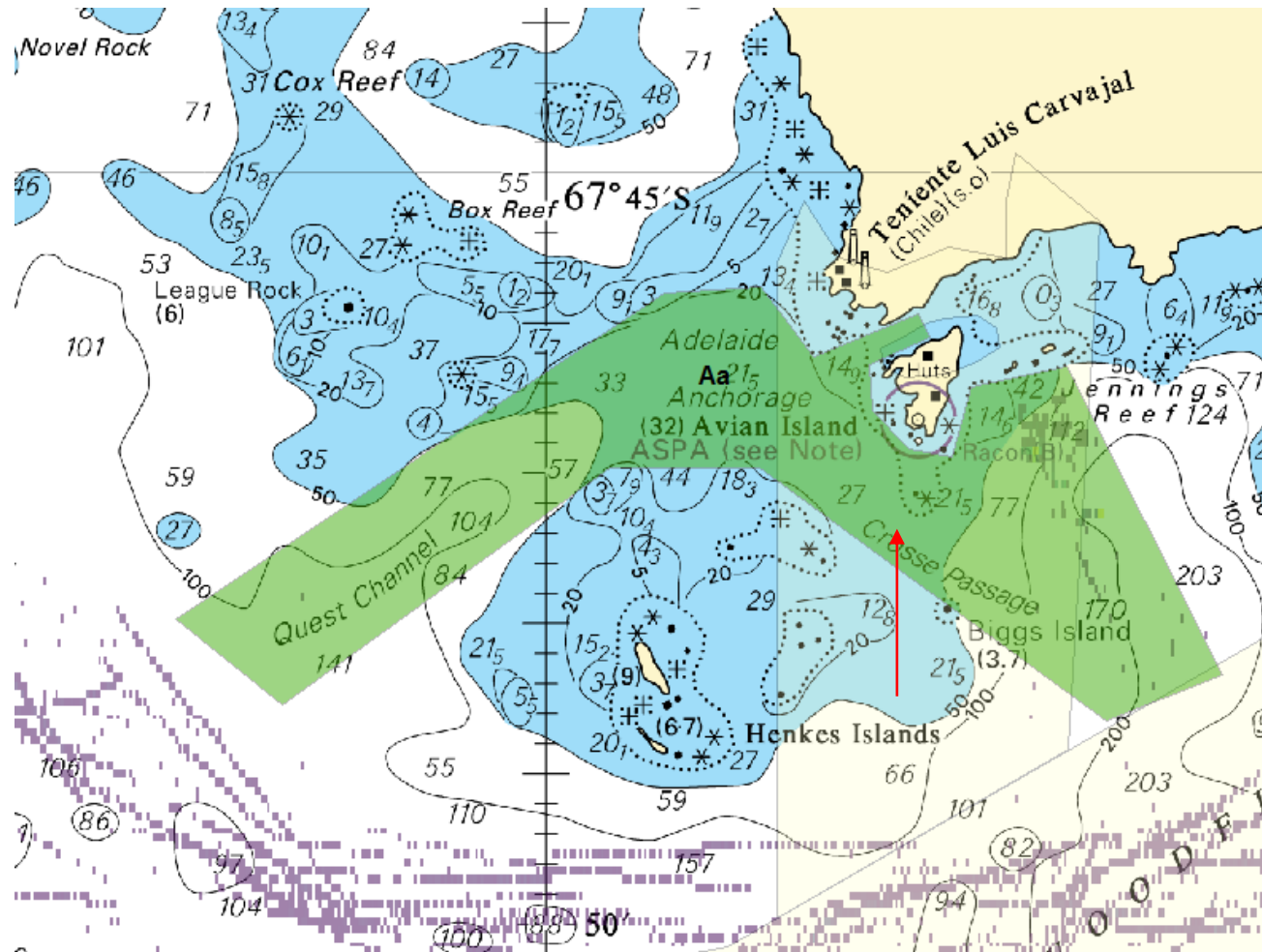
BC 'Aa' – Avian Island (INT9110 CL)

- Amended to fully include:
 - Quest Channel, Crosse Passage and Adelaide Anchorage



IHO

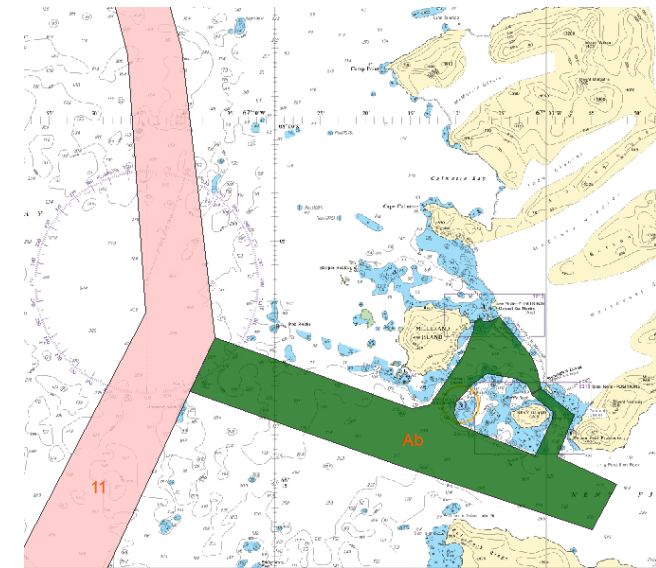
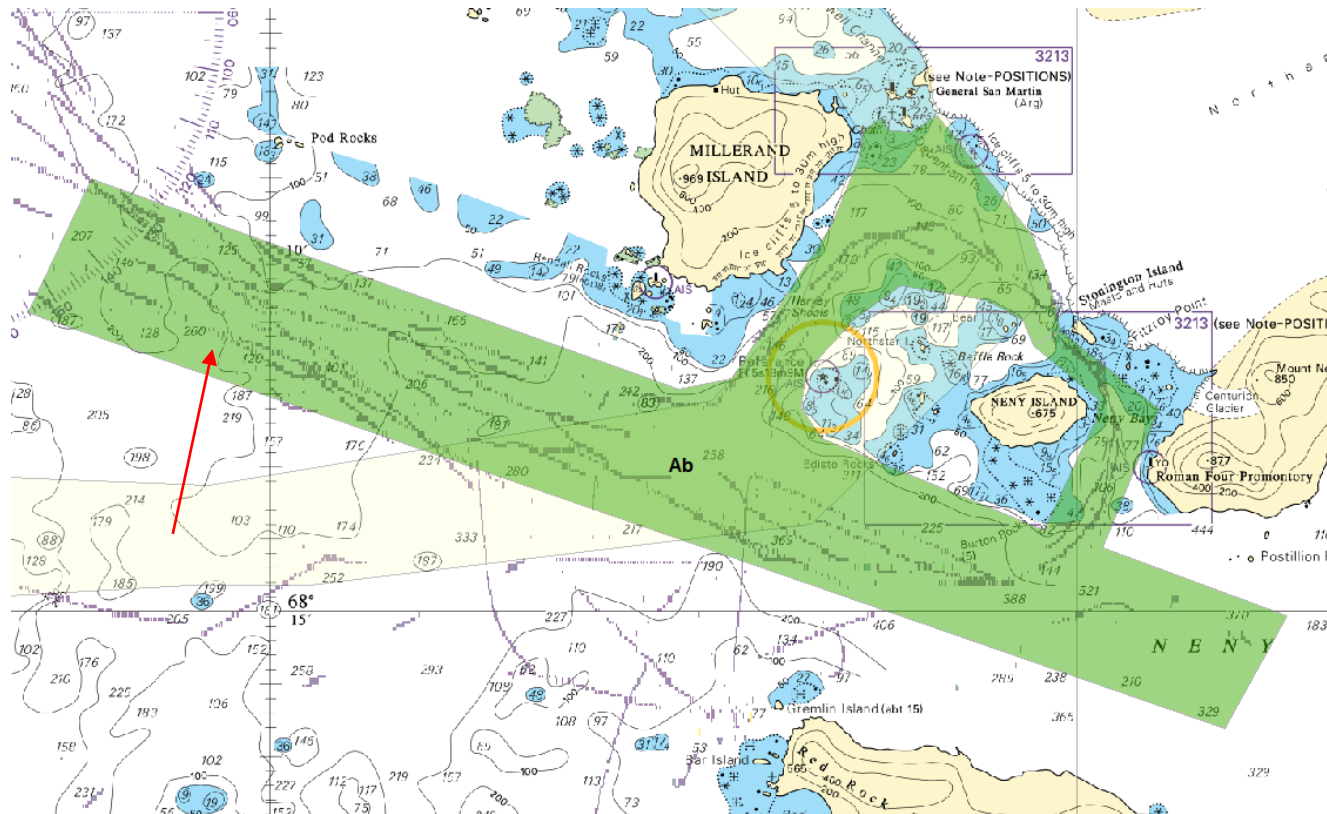
International
Hydrographic
Organization





BC 'Ab' – Approaches to Millerand Island (INT9111 AR)

- Amended to include:
 - Neny Bay reported anchorage
 - Stonington Island reported anchorage
- Unused approach through Powell Channel removed



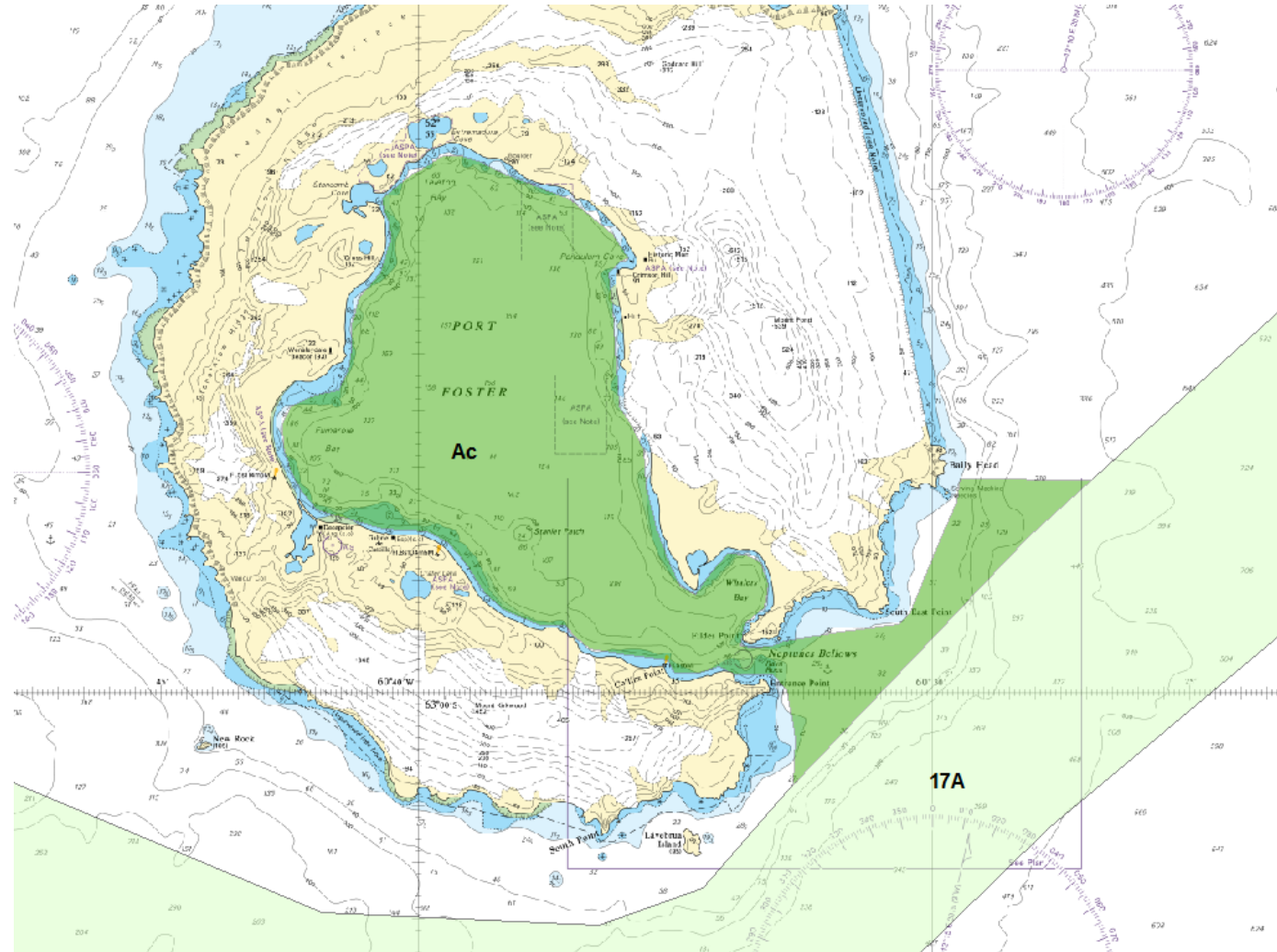
BC 'Ac' – Port foster & Neptune Bellows (INT9120 AR)

- Amended to accommodate changes to MSR17



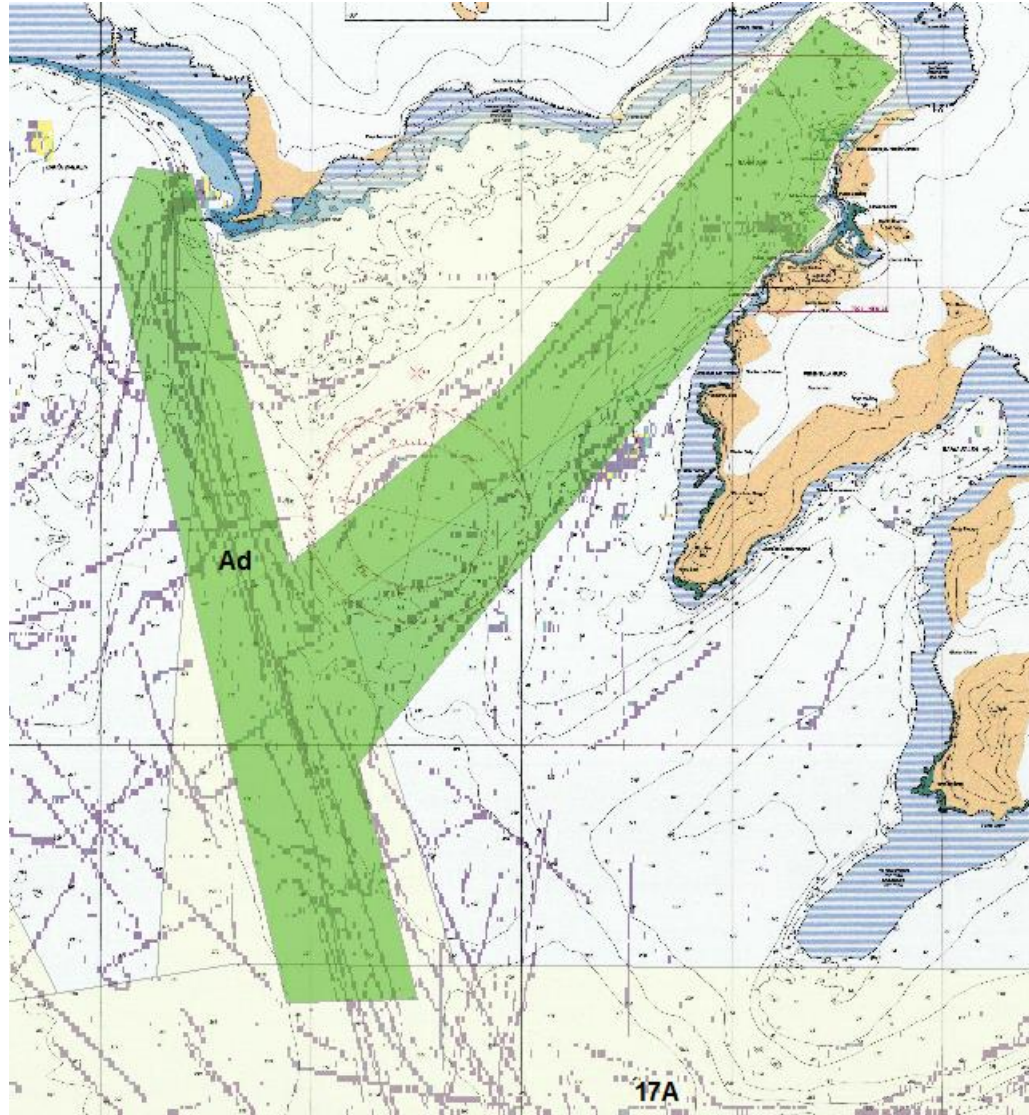
IHO

International
Hydrographic
Organization



BC 'Ad' – South Bay & Hannah Point (INT9121 ES)

- Amended reflect AIS traffic



HCA-18, May 2022



IHO

International
Hydrographic
Organization

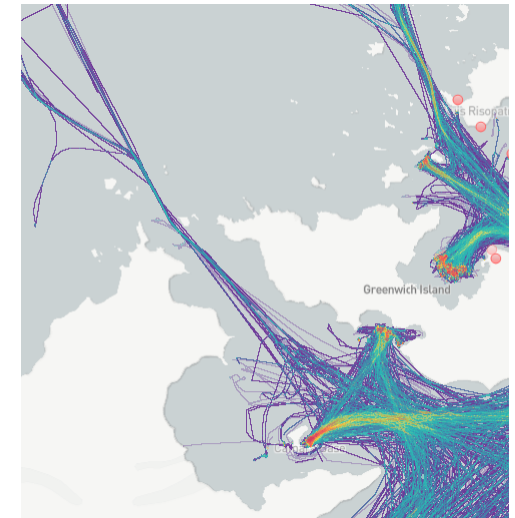
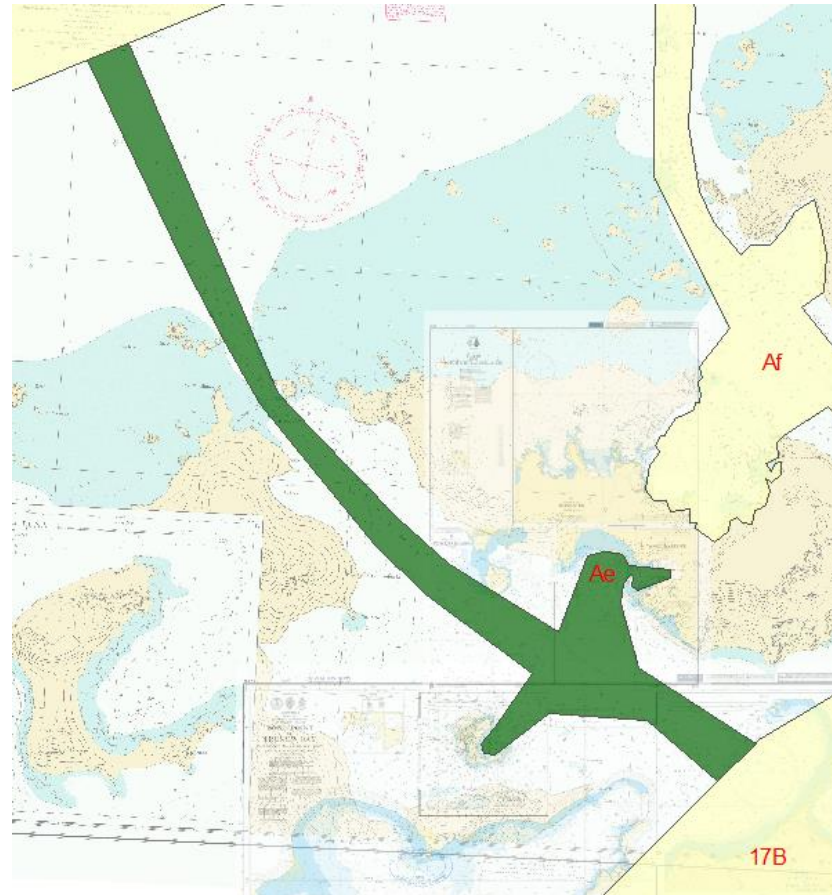


IHO

International
Hydrographic
Organization

BC 'Ae' – McFarlane Strait (INT9137 ES Schemed)

- Amended reflect AIS traffic:
 - West of Meade Island
 - In the vicinity of Half Moon island and Yankee Harbour
- Amended to fit WGS84



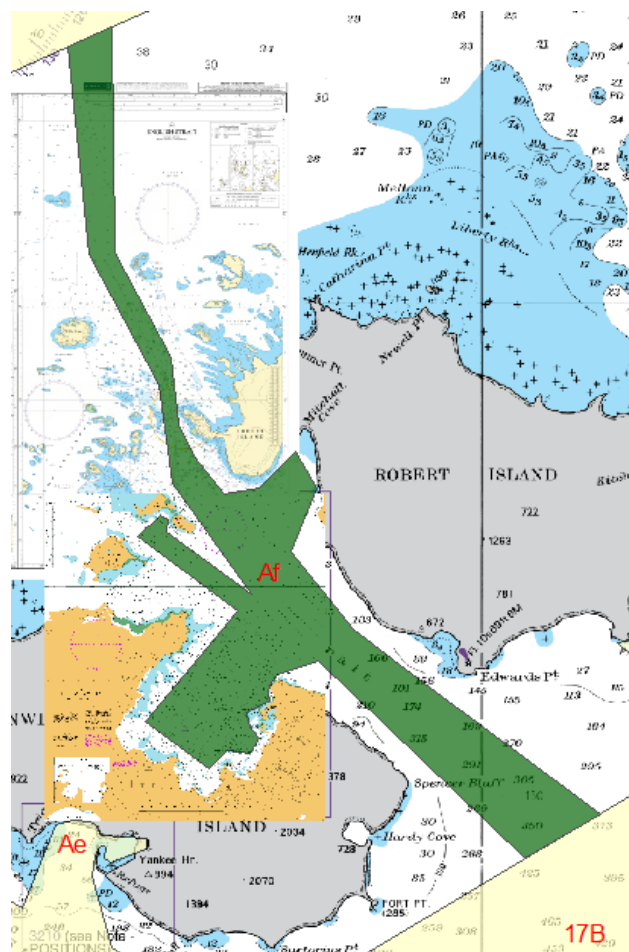
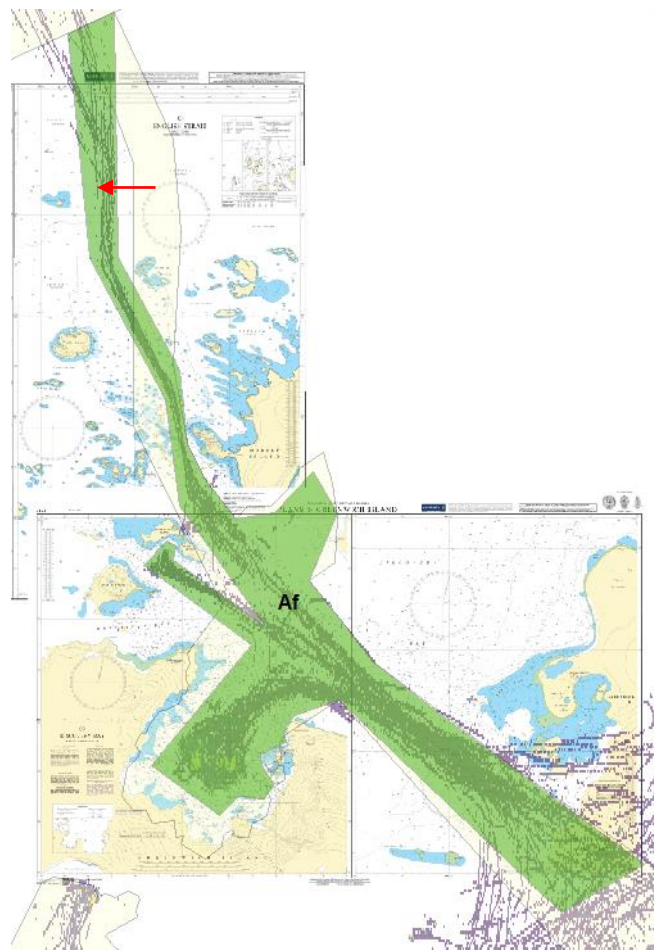


IHO

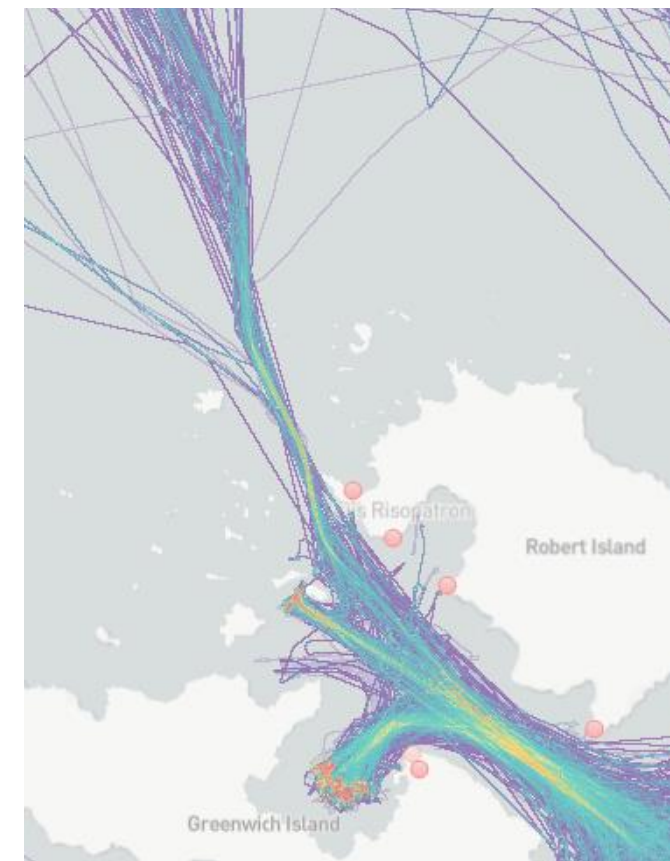
International
Hydrographic
Organization

BC 'Af' – English Strait (INT 9122 (CL) 9117 (UK) 9152 (BR/CL))

- Amended reflect AIS traffic:
 - In Villalon Passage
 - Along deep water route
- Amended to reflect WGS84 positions

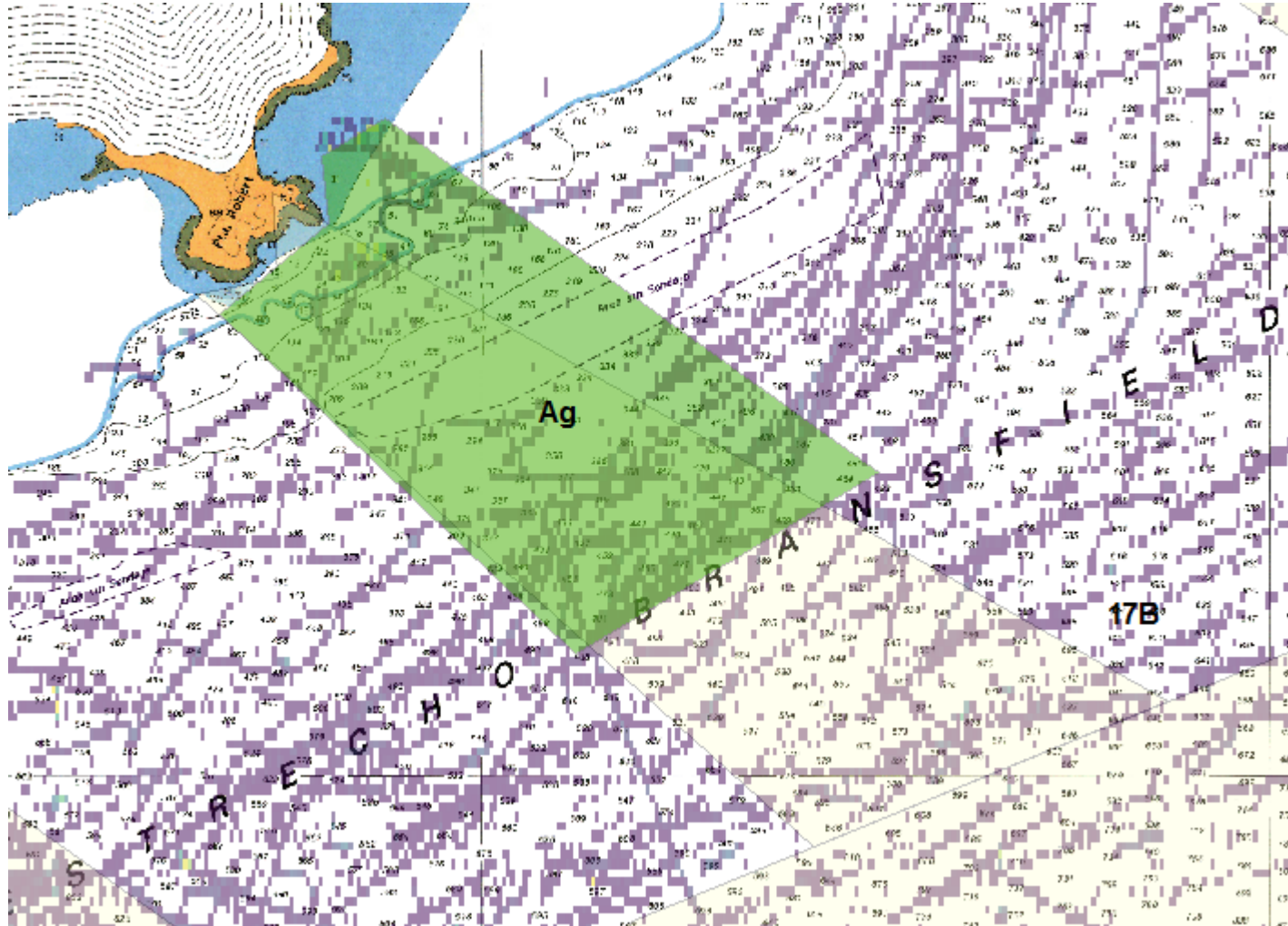


HCA-18, May 2022



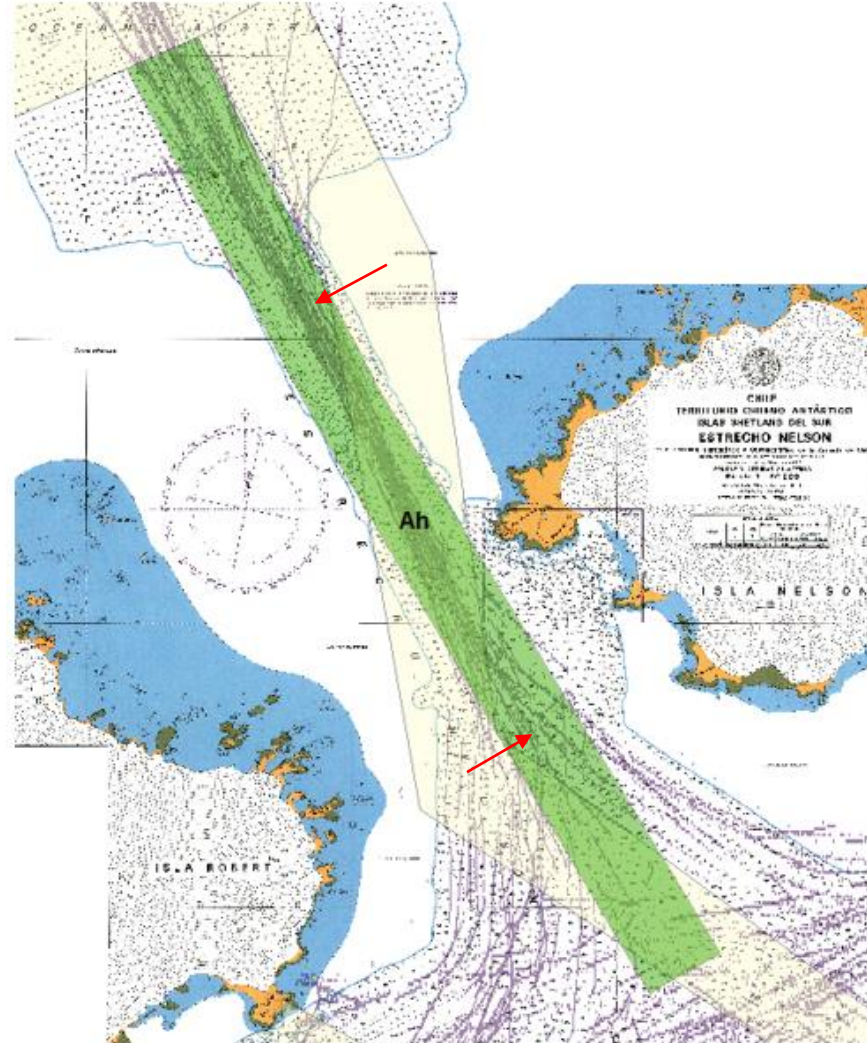
BC 'Ag' – Robert Point (INT9151 BR/CL)

- Amended reflect AIS traffic east of Robert Point



BC 'Ah' – Nelson Strait (INT9151 BR/CL)

- Amended reflect AIS traffic and underlying data quality



HCA-18, May 2022



IHO

International
Hydrographic
Organization

BC 'Ai' – Maxwell Bay & Approaches (INT9123 CL)

- Centralised route
- Potter and Marian Coves amended to WGS84



HCA-18, May 2022

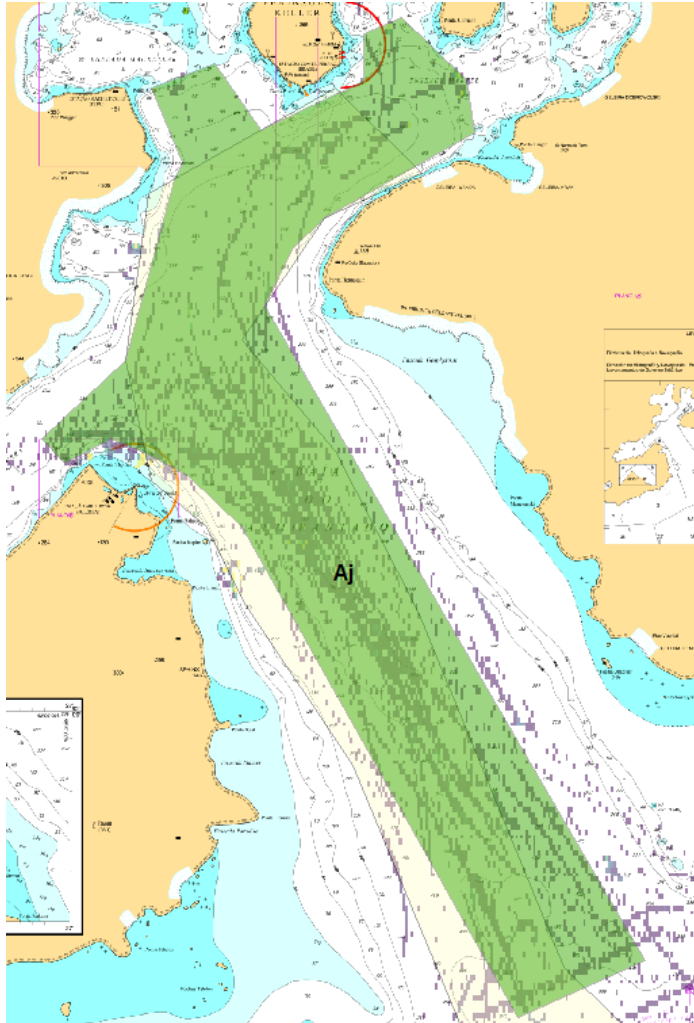


IHO

International
Hydrographic
Organization

BC 'Aj' – Admiralty Bay (INT9125 BR/PE)

- Centralised route
- Extended into Martel & Mackellar entrance (Machu Piccu & Ferraz)



HCA-18, May 2022



IHO

International
Hydrographic
Organization

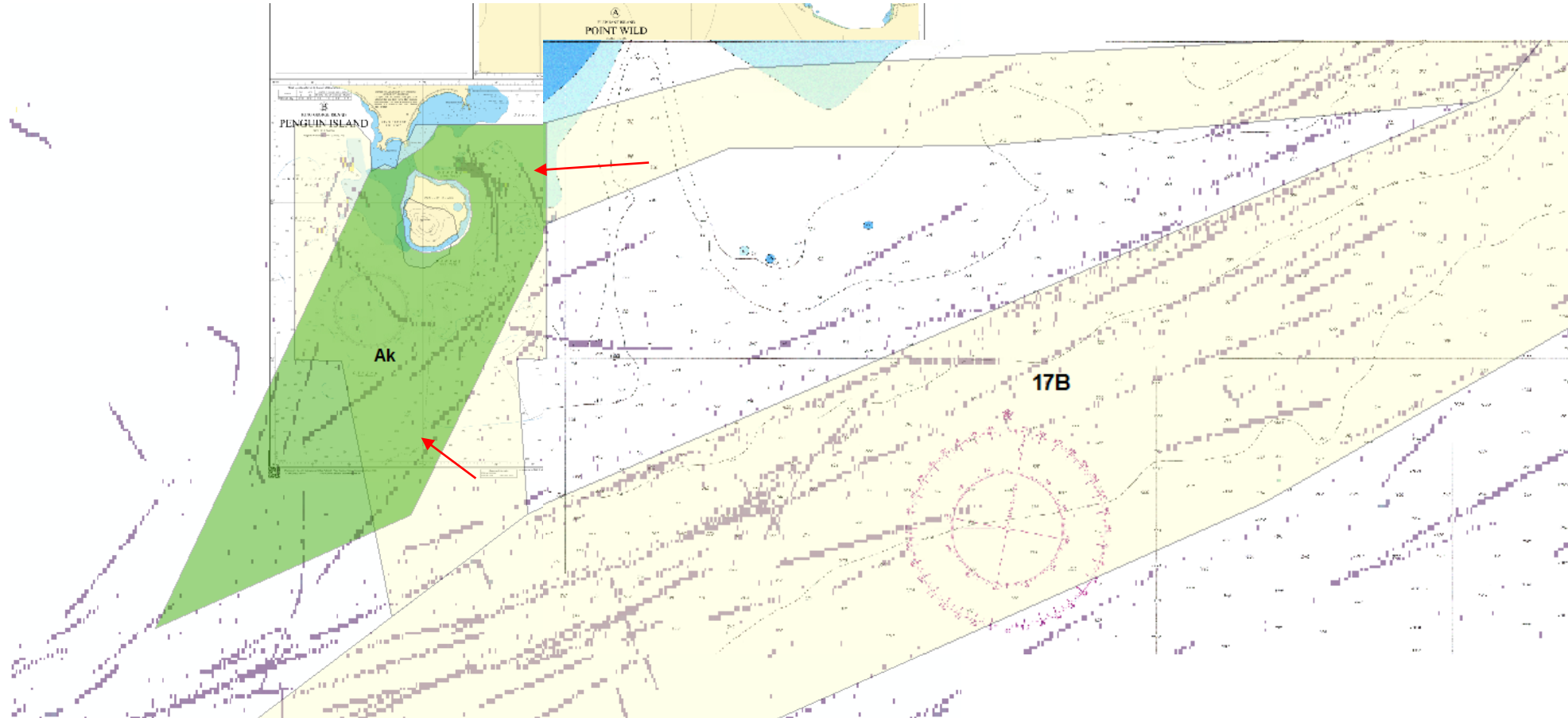


IHO

International
Hydrographic
Organization

BC 'Ak' – Penguin Island & Approaches (INT9112 UK, 9127 BR)

- Amended route to reflect western approach of traffic from KGI research bases
- Eastern section to MSR 17B deleted



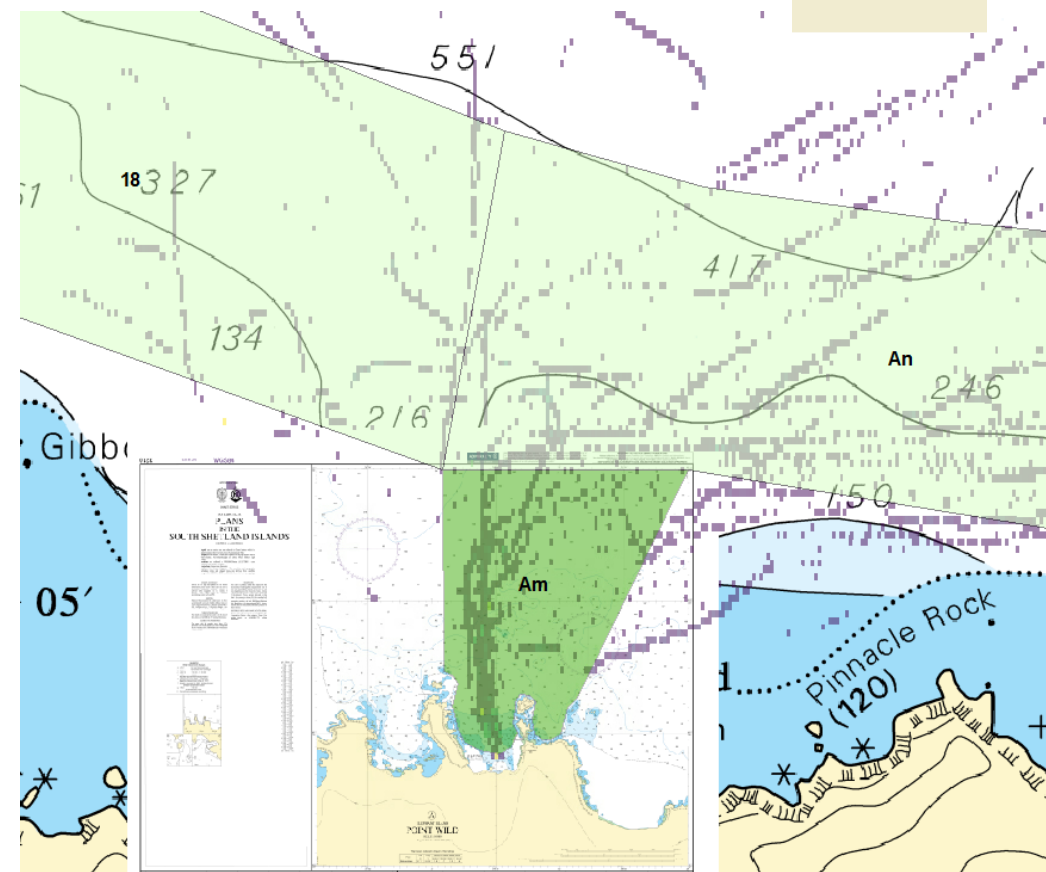
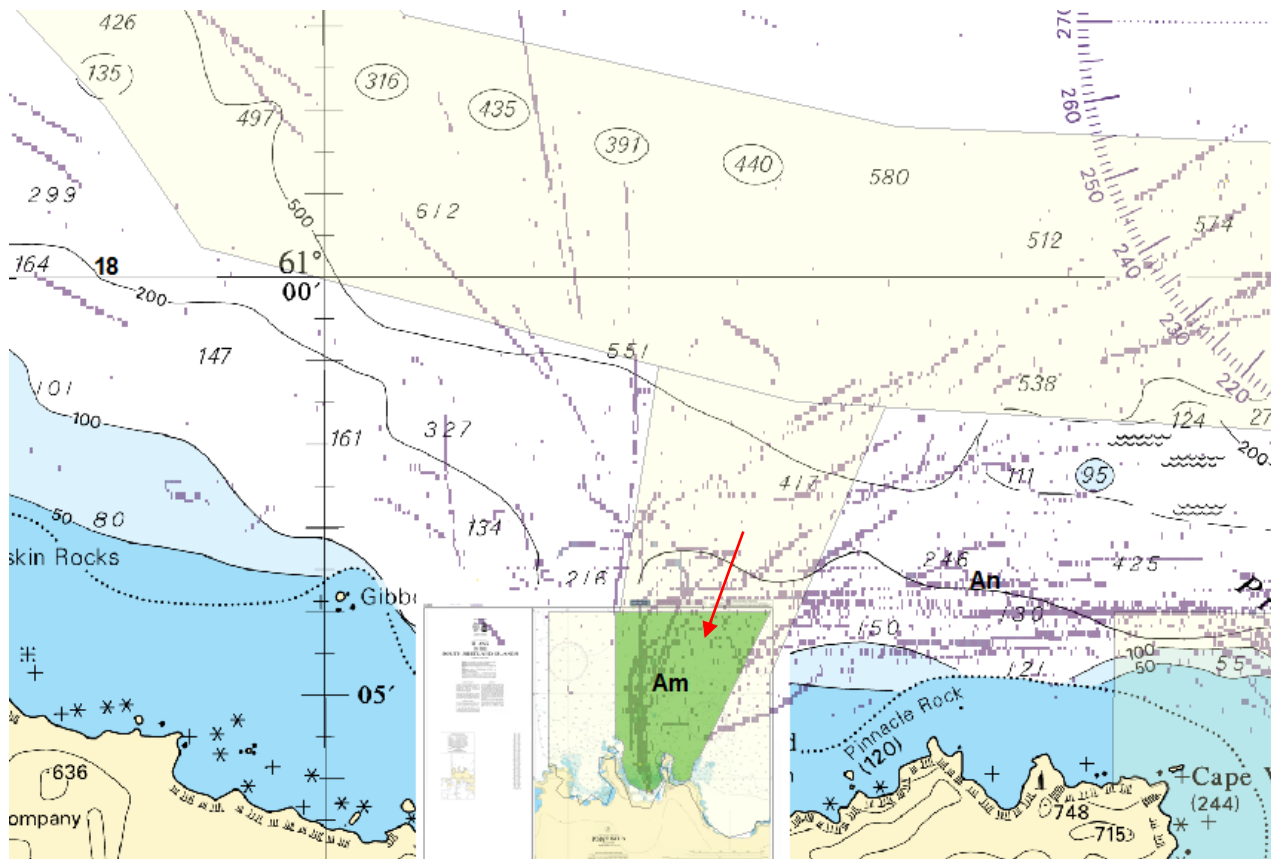
BC 'Am' – Point Wild (INT9112 & 9150 UK)

- Reduced to accommodate changes to MSR 18



IHO

International
Hydrographic
Organization



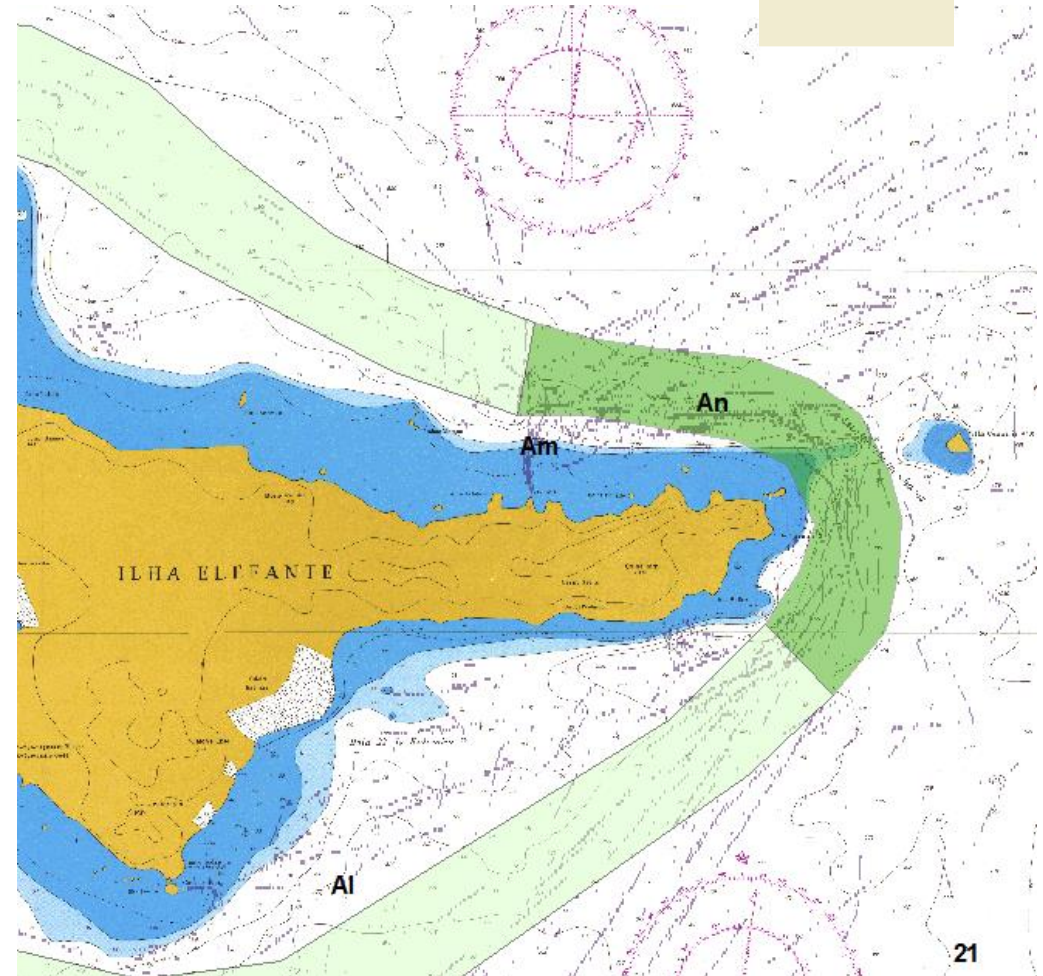
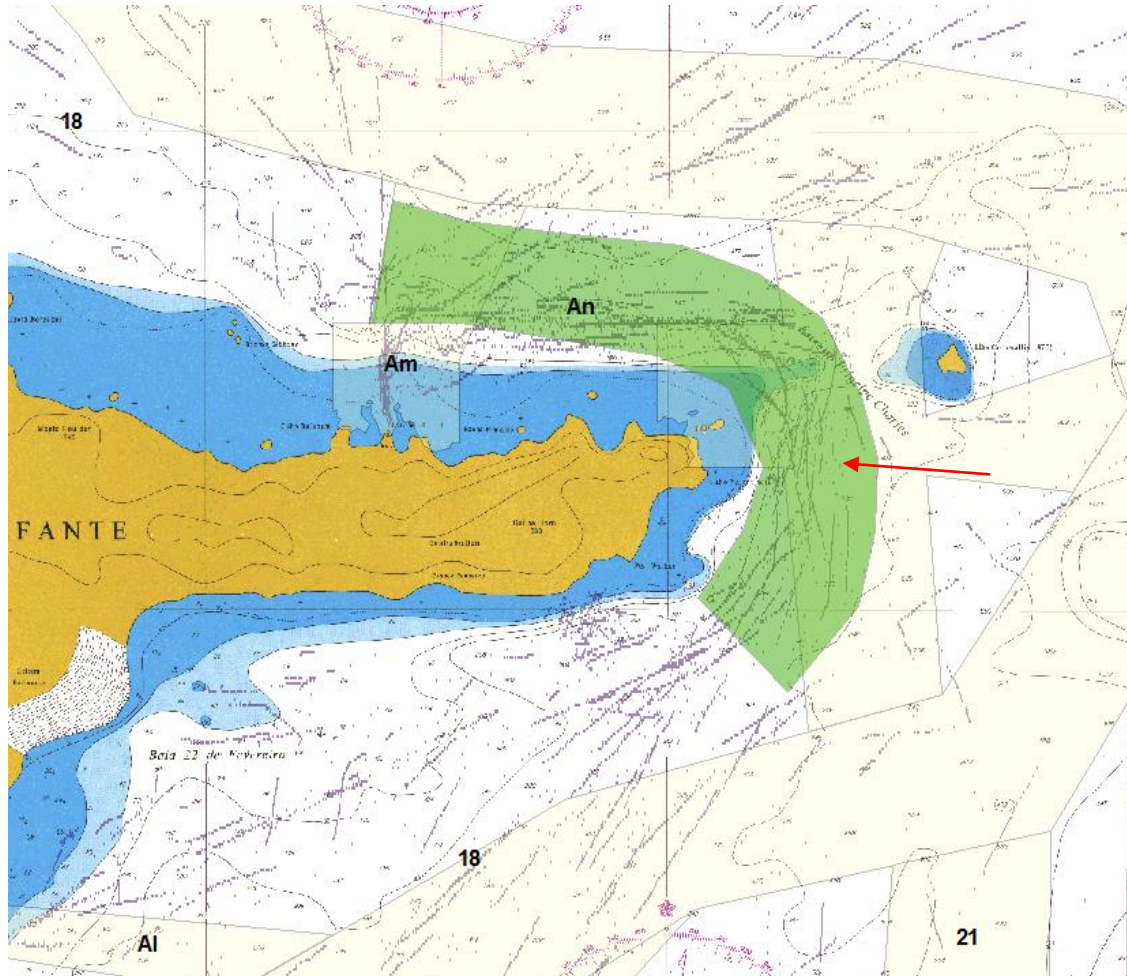


IHO

International
Hydrographic
Organization

BC 'An' – Cape Valentine (INT9150 BR)

- Merged to MSR 18 to reflect traffic using Prince Charles Strait
- Extended to include Point Wild and Walker Point



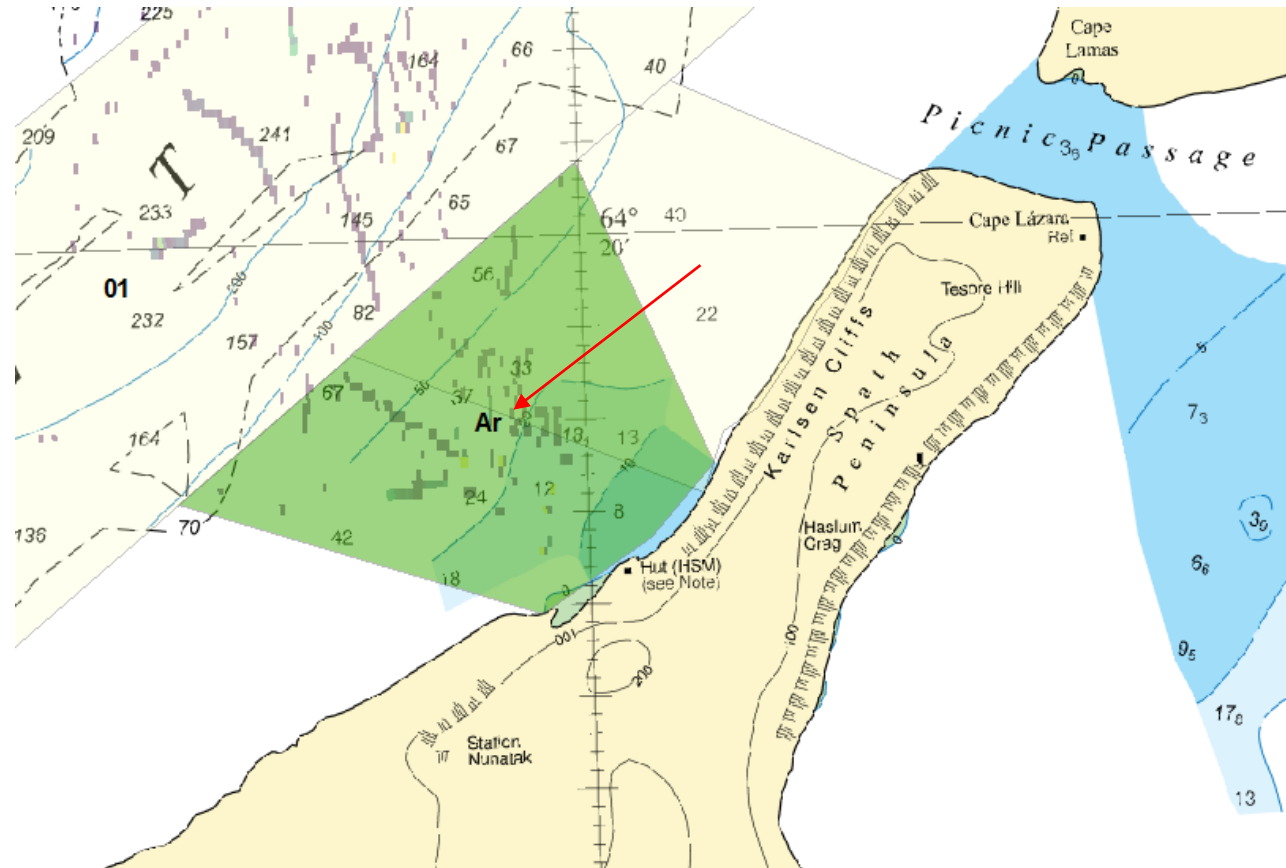


IHO

International
Hydrographic
Organization

BC 'Ar' – Historic Monument (Snow Hill Island INT9153 UK)

- Minor amendments to reflect charted data and AIS patterns



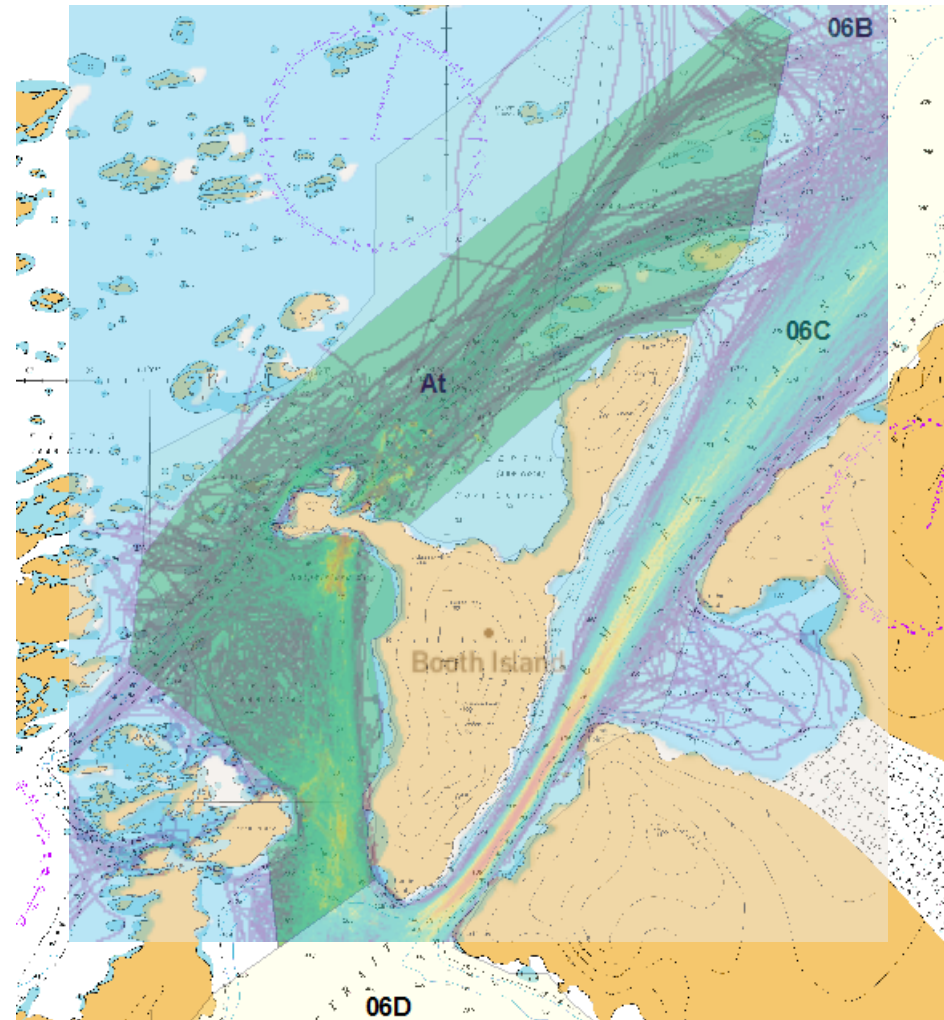
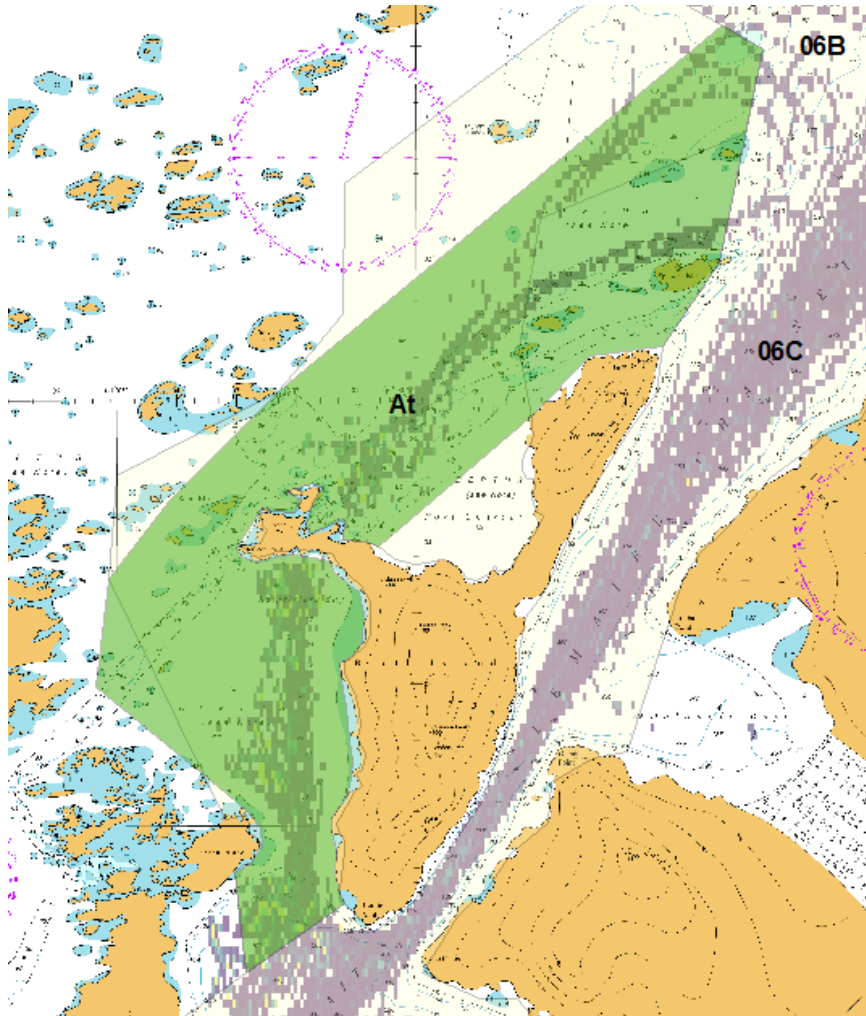
BC 'At' – Booth Island, Port Charcot & Pleneau Island (INT9118 UK)

- Minor amendment to include passage south of Splitwind Island



IHO

International
Hydrographic
Organization



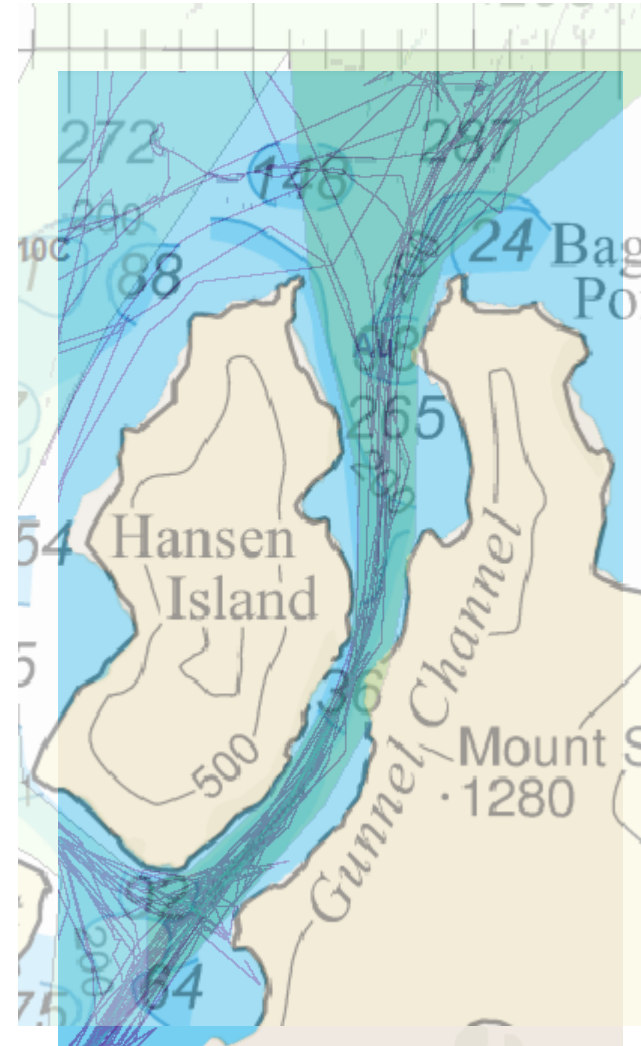
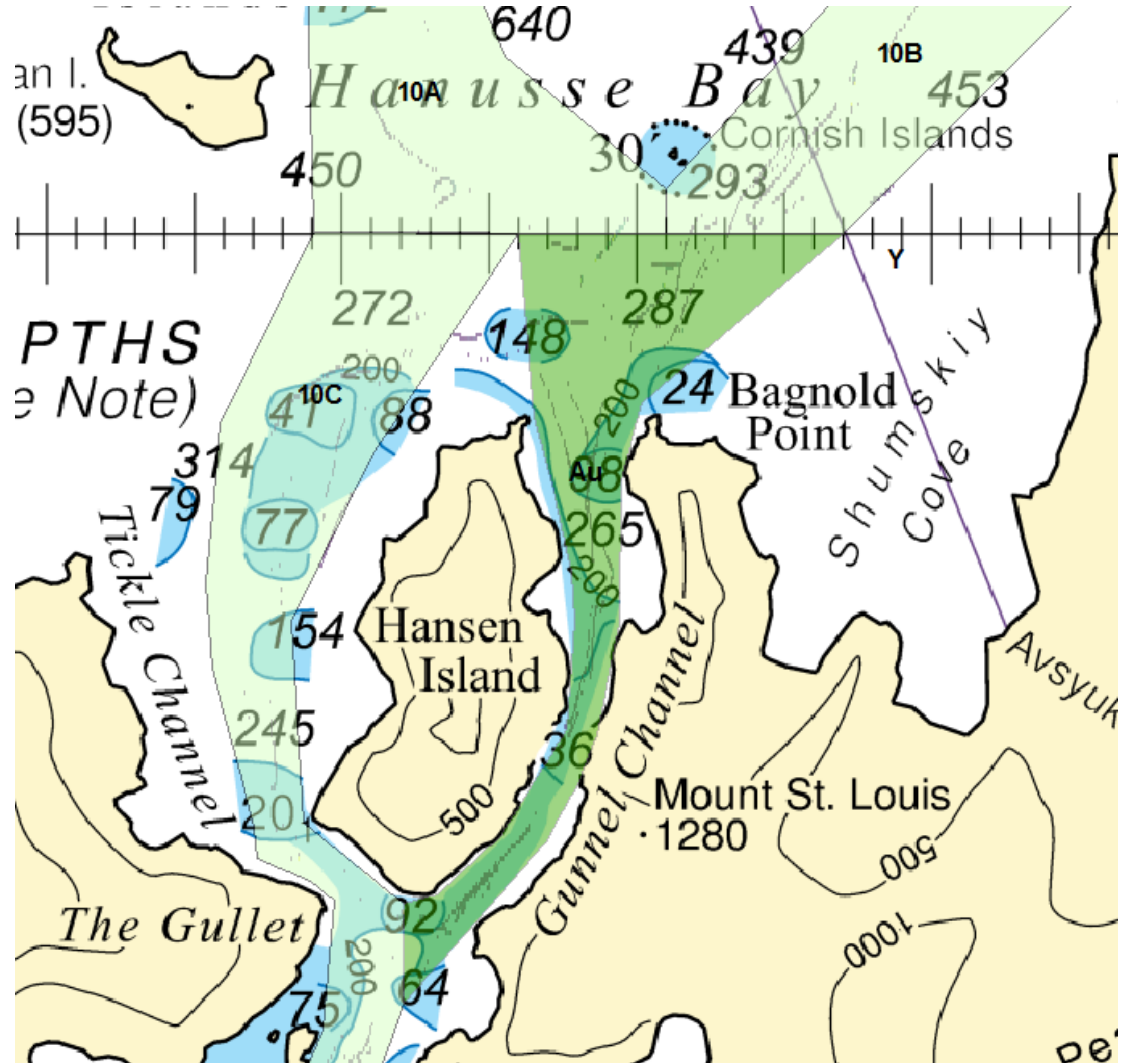


IHO

International
Hydrographic
Organization

BC 'Au' – Gunnel Channel (INT 9108 CL Schemed)

- Minor amendments to accommodate changes to MSR 10





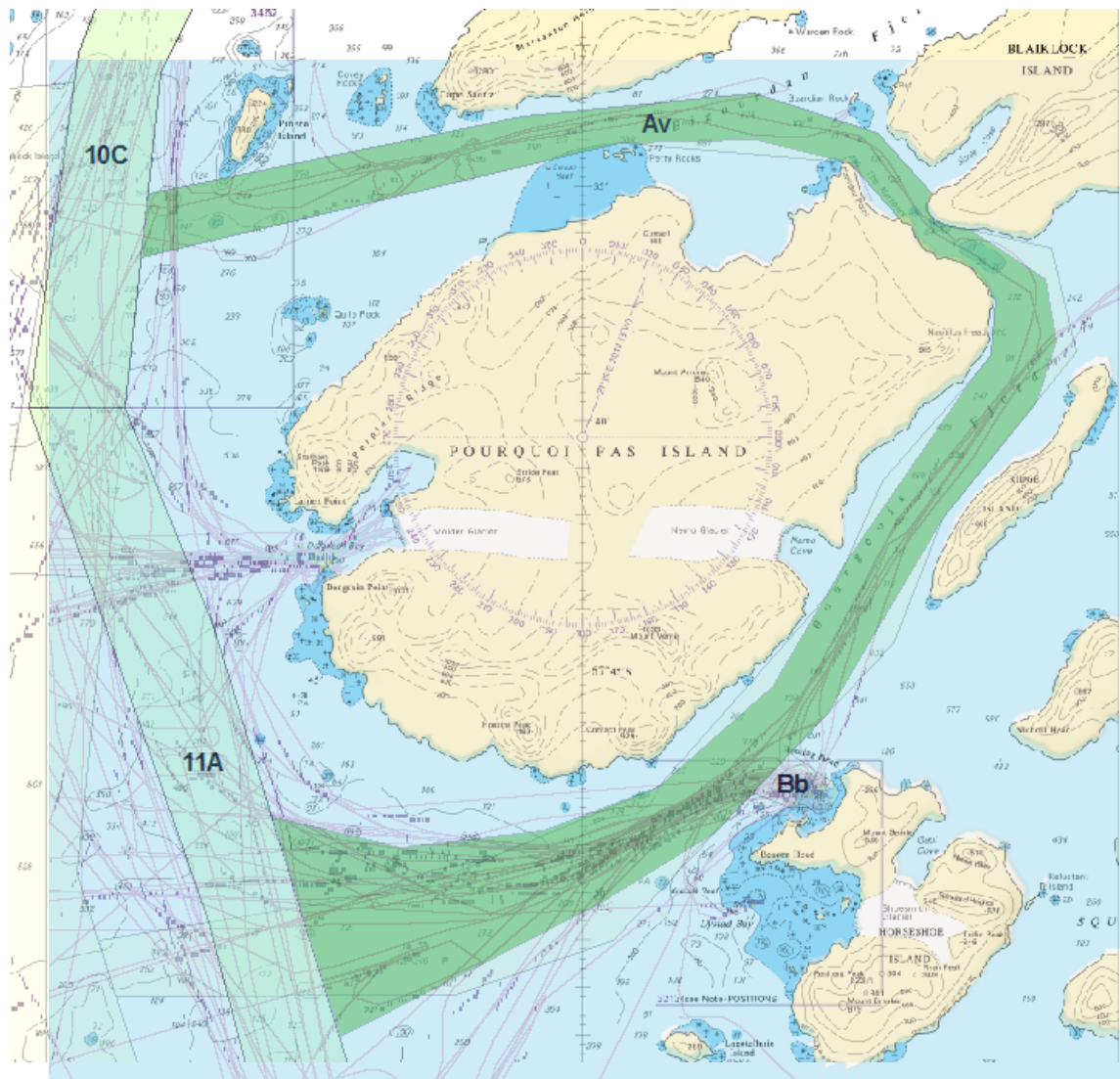
IHO

International
Hydrographic
Organization

BC 'Av' – Pourquoi Pass Island (INT 9163 UK)

- Minor amendments to accommodate changes to MSR 10 & 11

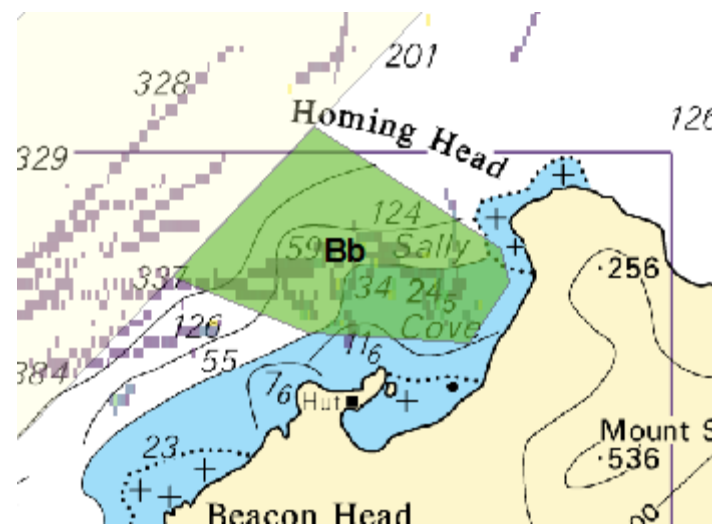
UK2021/22 surveys



HCA-18, May 2022

BC 'Bb' – Horseshoe Island & Lydstad Bay (INT 9113 & 9163 UK)

- Renamed to Horseshoe Island – Sally Cove to avoid confusion regarding future requirements for Lydstad Bay



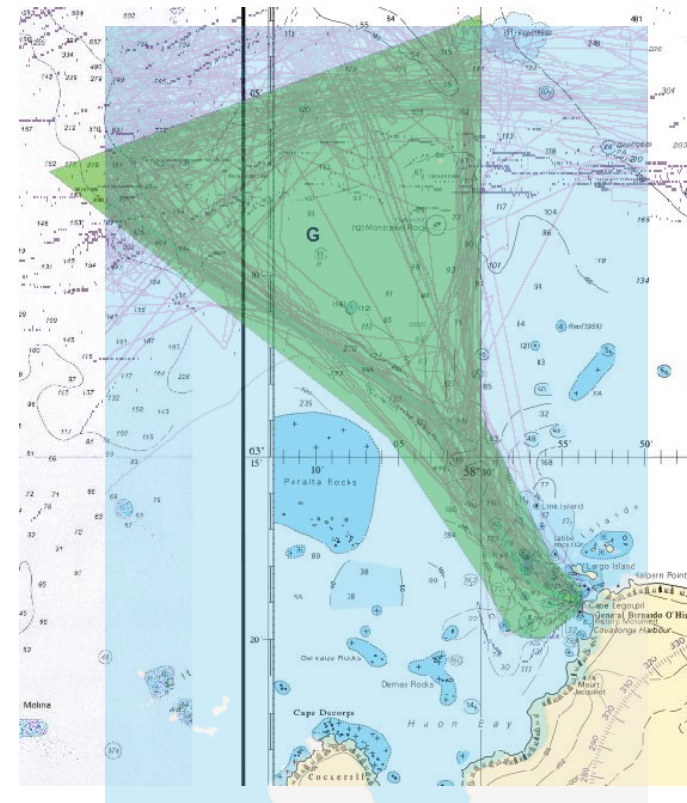
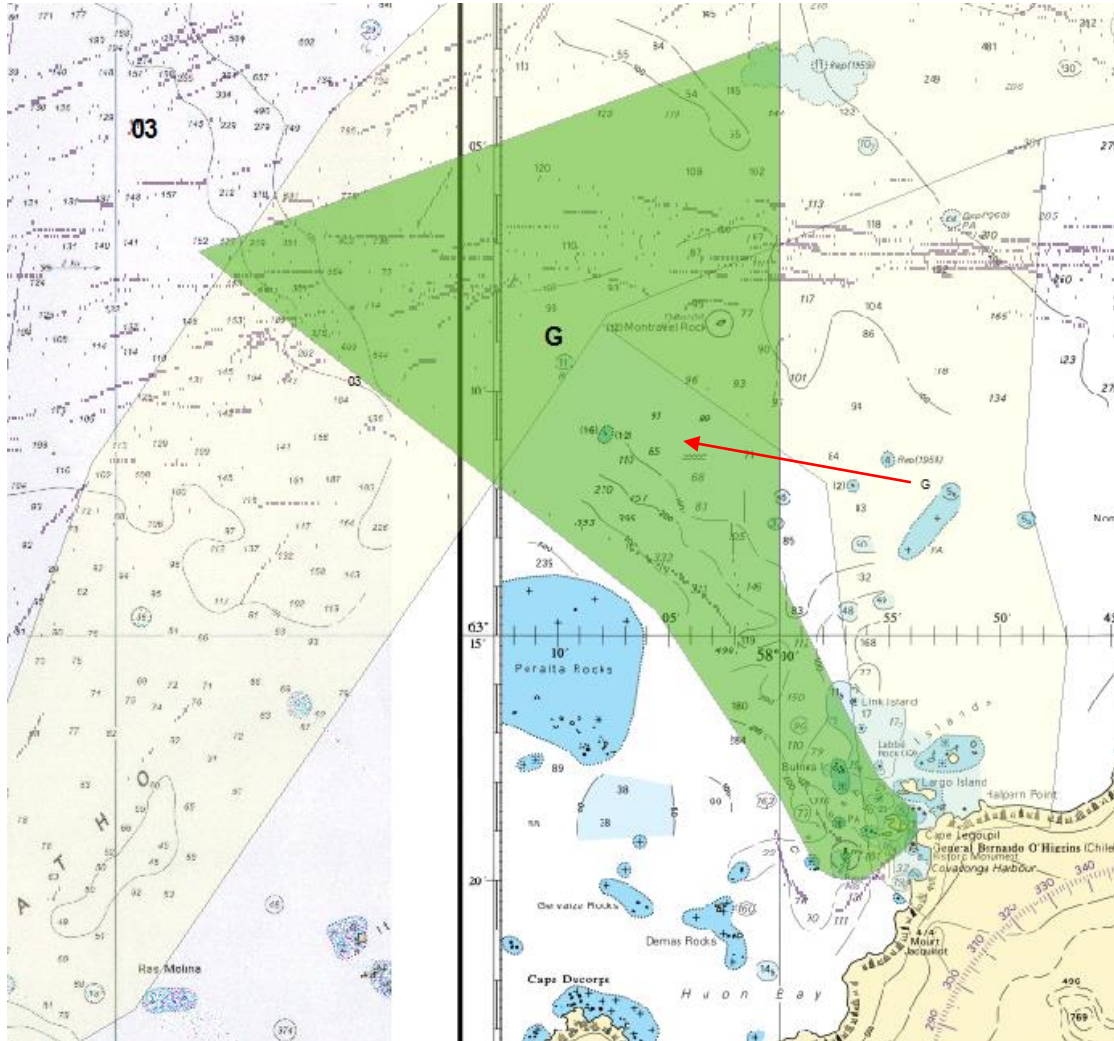
BC 'G' – Bernado O'Higgins & Approaches (INT9102 & 9155 CL 9154 UK)

- Amended to reflect route into Antarctic base



IHO

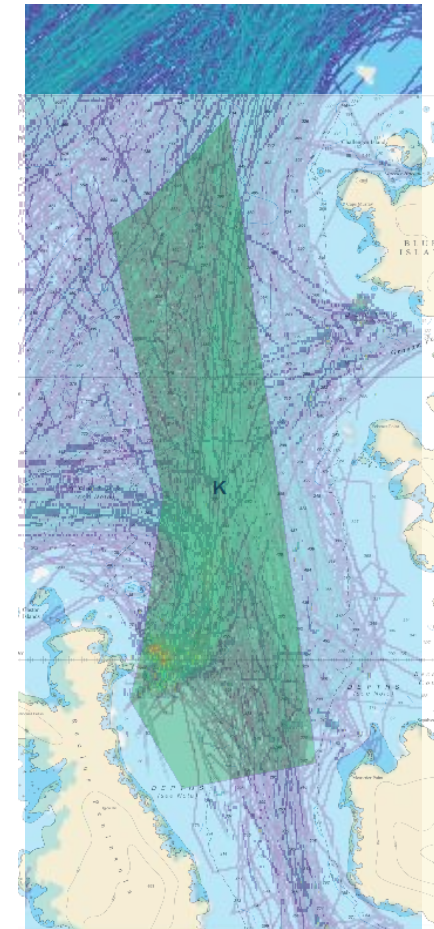
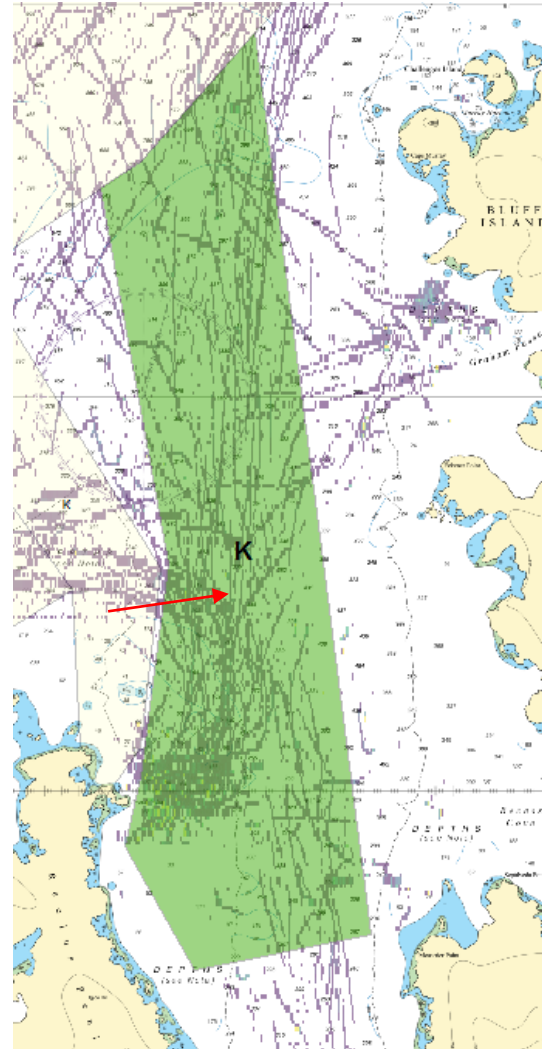
International
Hydrographic
Organization



BC 'K' – Portal Point (INT9112 UK)

- Amended to reflect AIS traffic in vicinity of Portal Point

UK2021/22 survey



IHO

International
Hydrographic
Organization

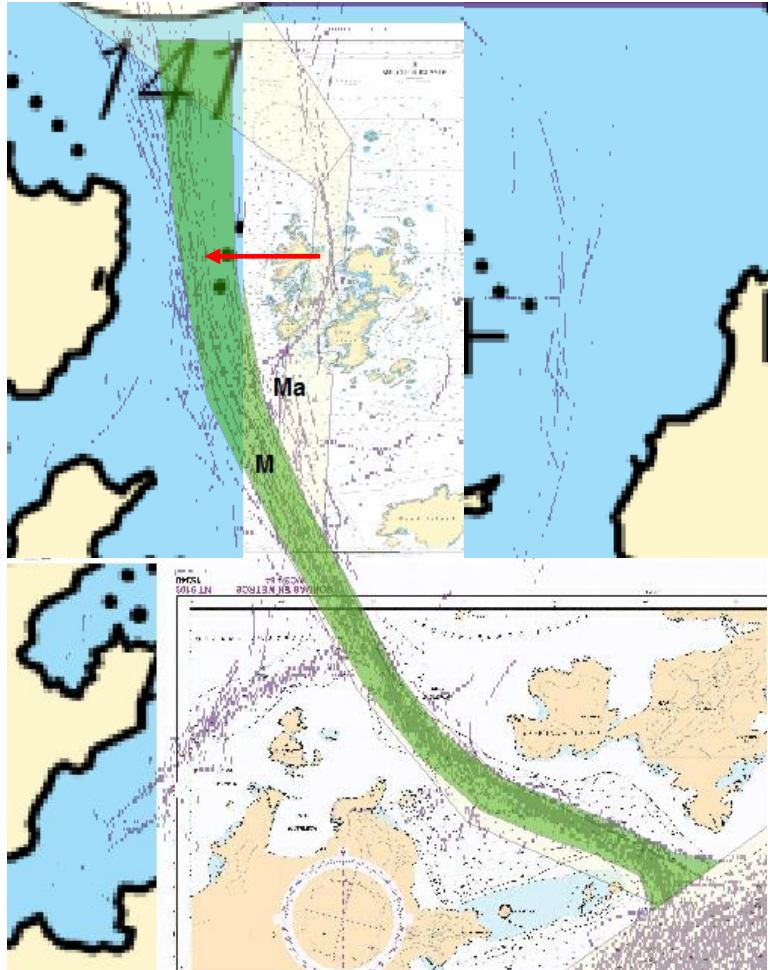
BC 'M' – Melchior Islands & Approaches (INT9157 CL, 9117 UK)

- Amended westwards of Islands to reflect traffic
- Renamed to Melchior Island Approach

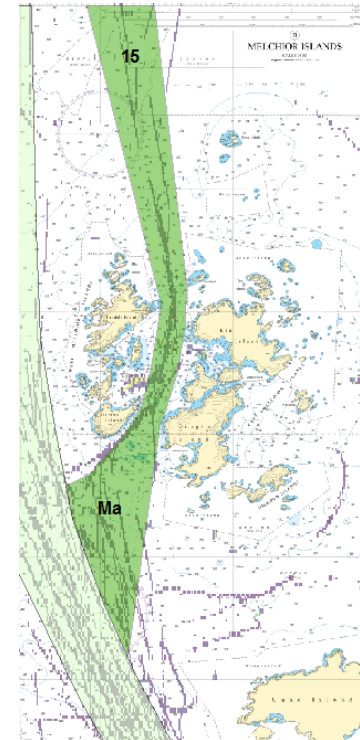


IHO

International
Hydrographic
Organization



- New Branch Corridor proposed to represent previous corridor through 'The Sound' (see BC 'Ma')



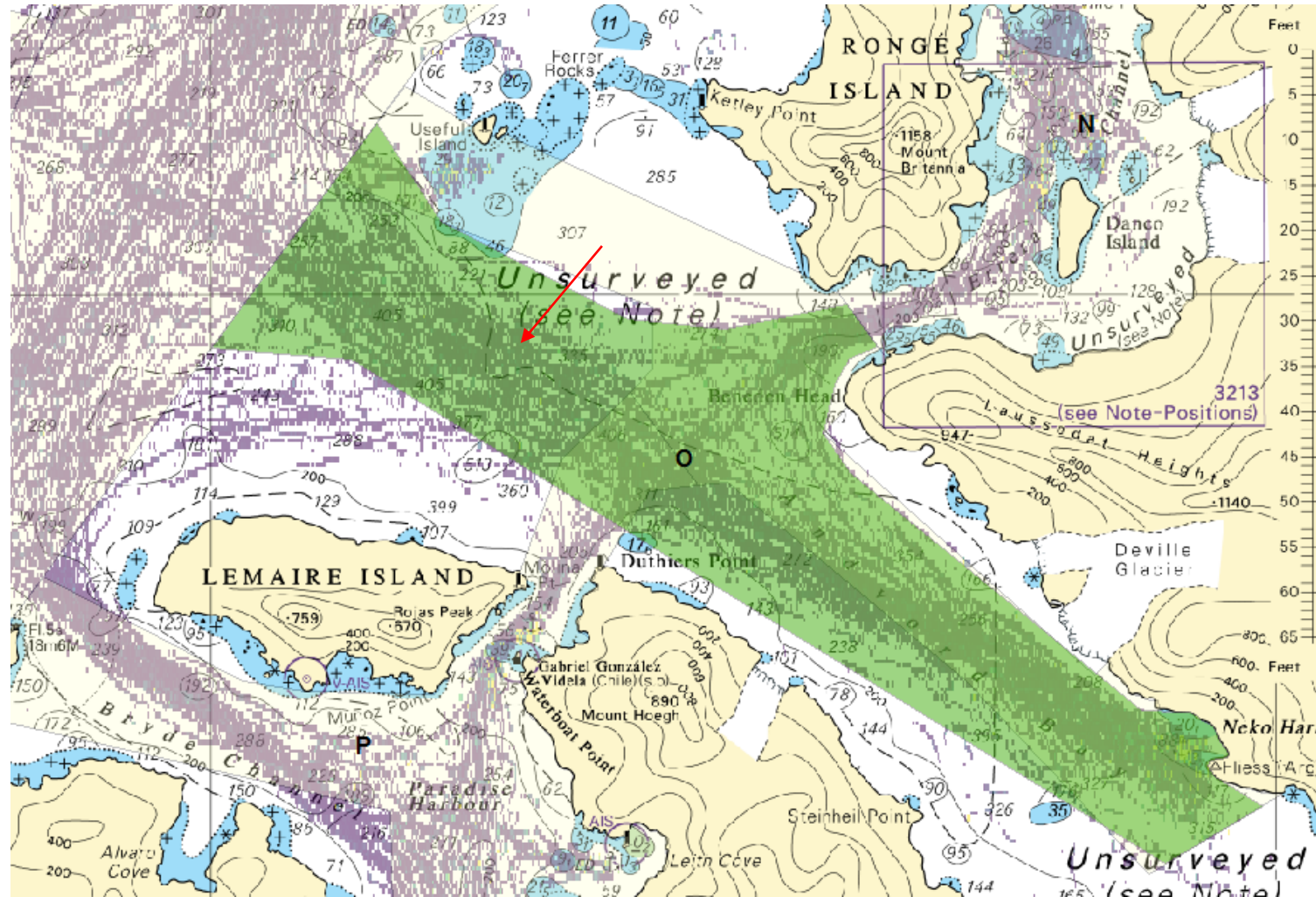
BC 'O' – Andvord Bay (INT9158 UK)

- Amended to reflect traffic



IHO

International
Hydrographic
Organization



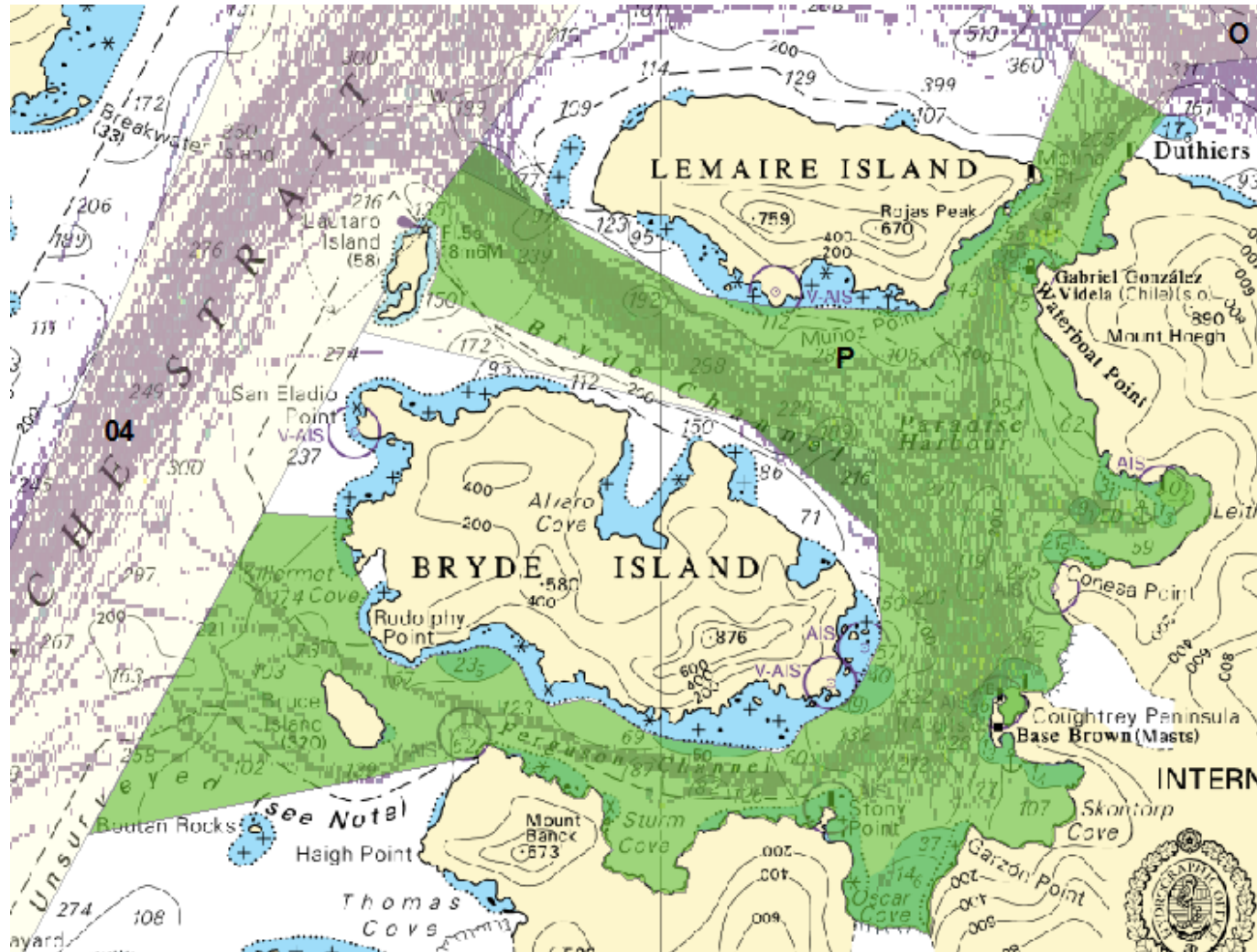
BC 'P' – Andvord Bay (INT9158 UK)

- Amended to reflect traffic



IHO

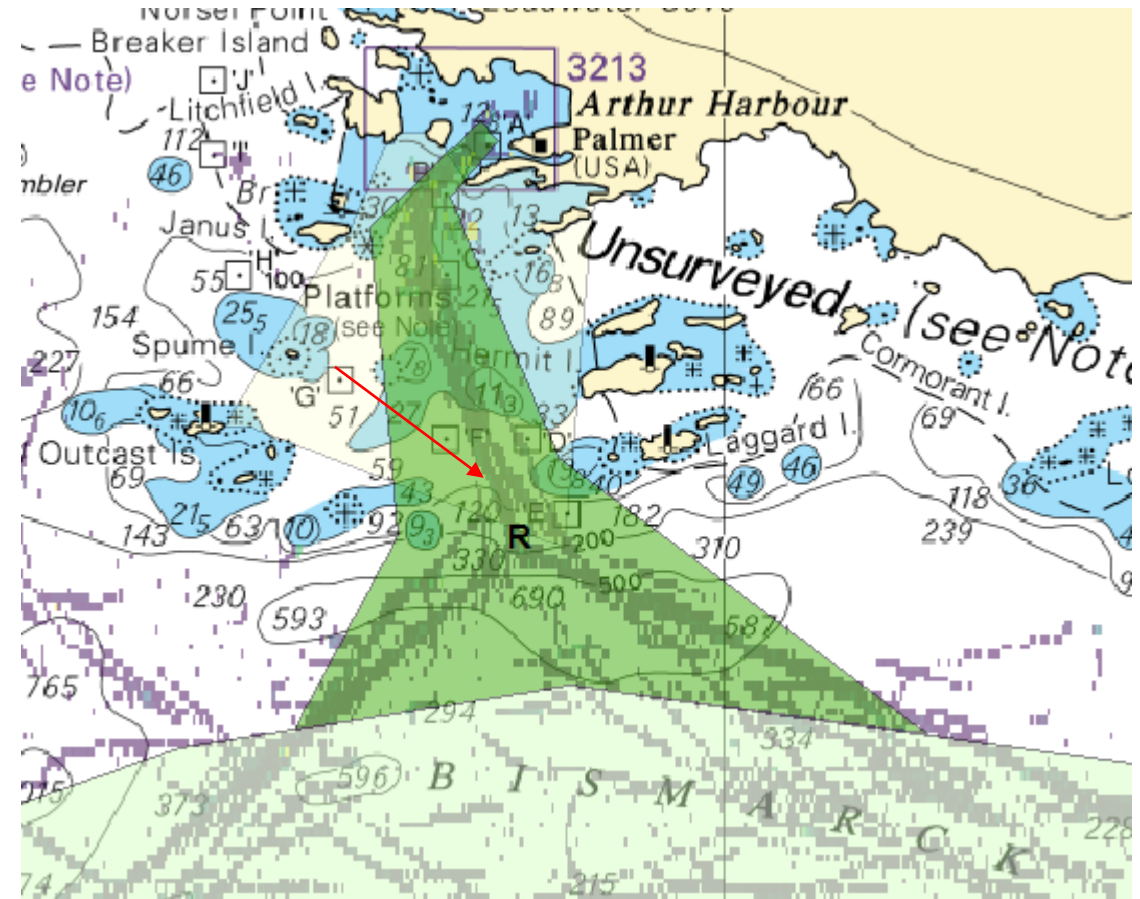
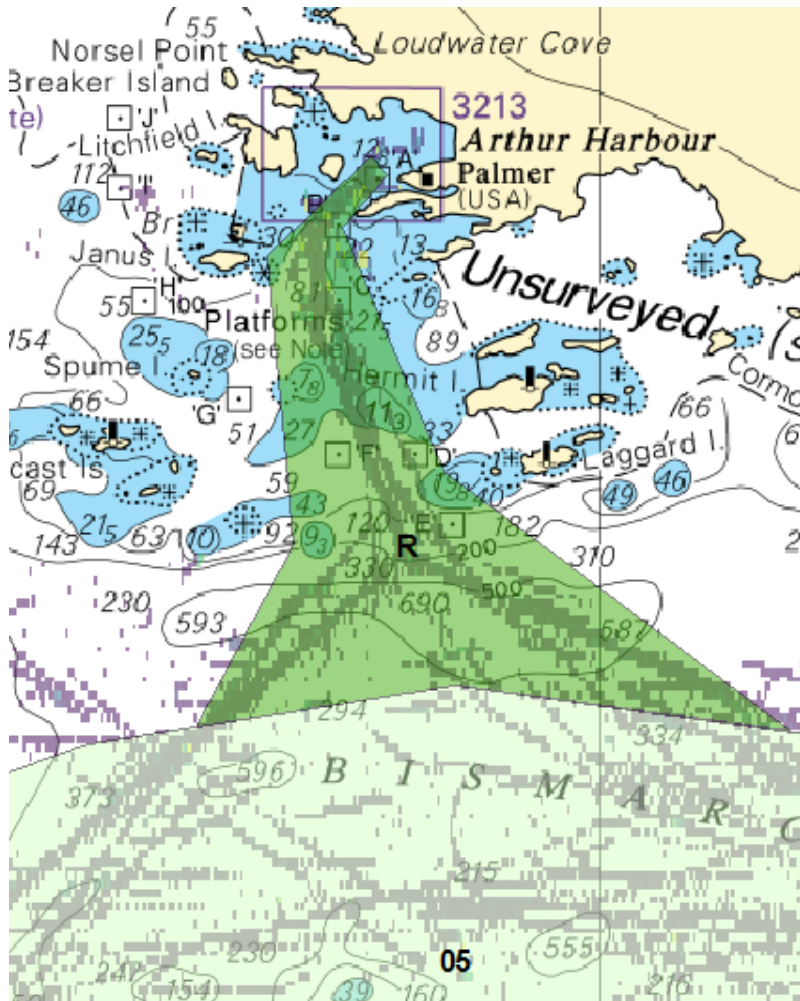
International
Hydrographic
Organization





BC 'R' – Arthur Harbour (Palmer) INT9107 (UK)

- Amended to reflect traffic
- Amended to accommodate changes to MSR 5



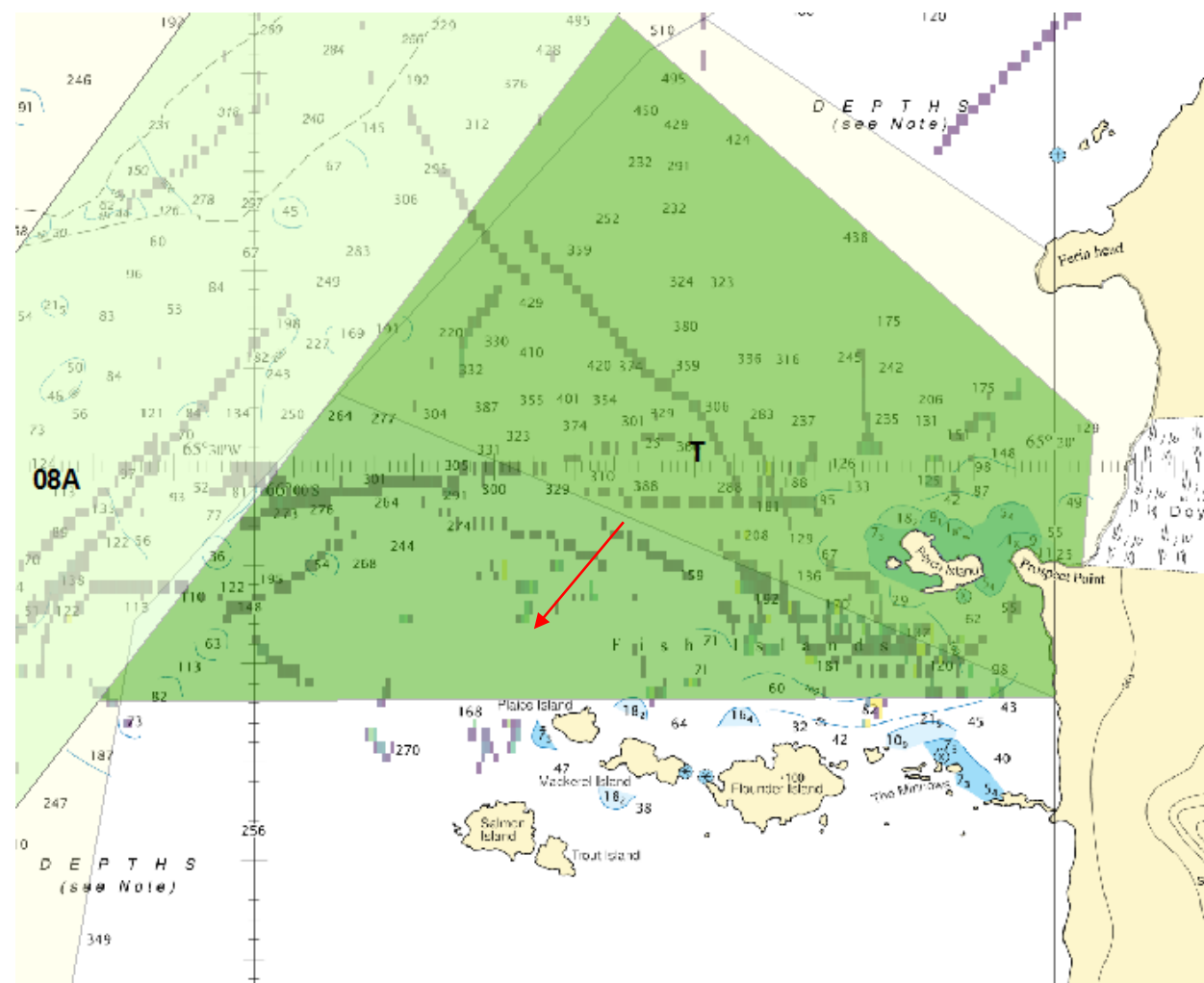


IHO

International
Hydrographic
Organization

BC 'T' – Prospect Point (INT 9107 UK)

- Amended to reflect traffic in vicinity of Fish Islands



HCA-18, May 2022

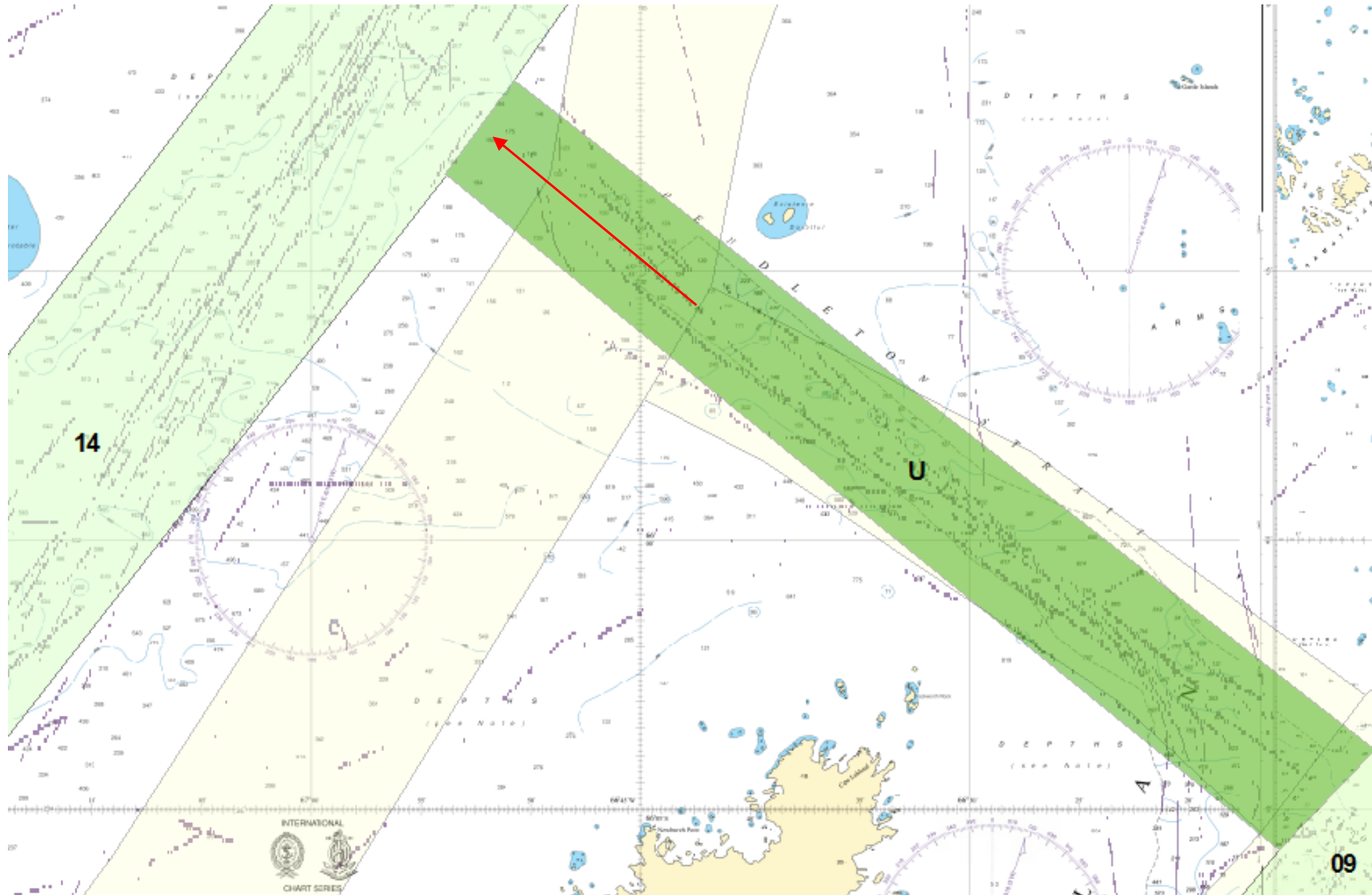
BC 'U' – Pendleton Strait (INT9519 UK)

- Minor amended to reflect traffic and data
- Extended to incorporate changes to MSR 14



IHO

International
Hydrographic
Organization





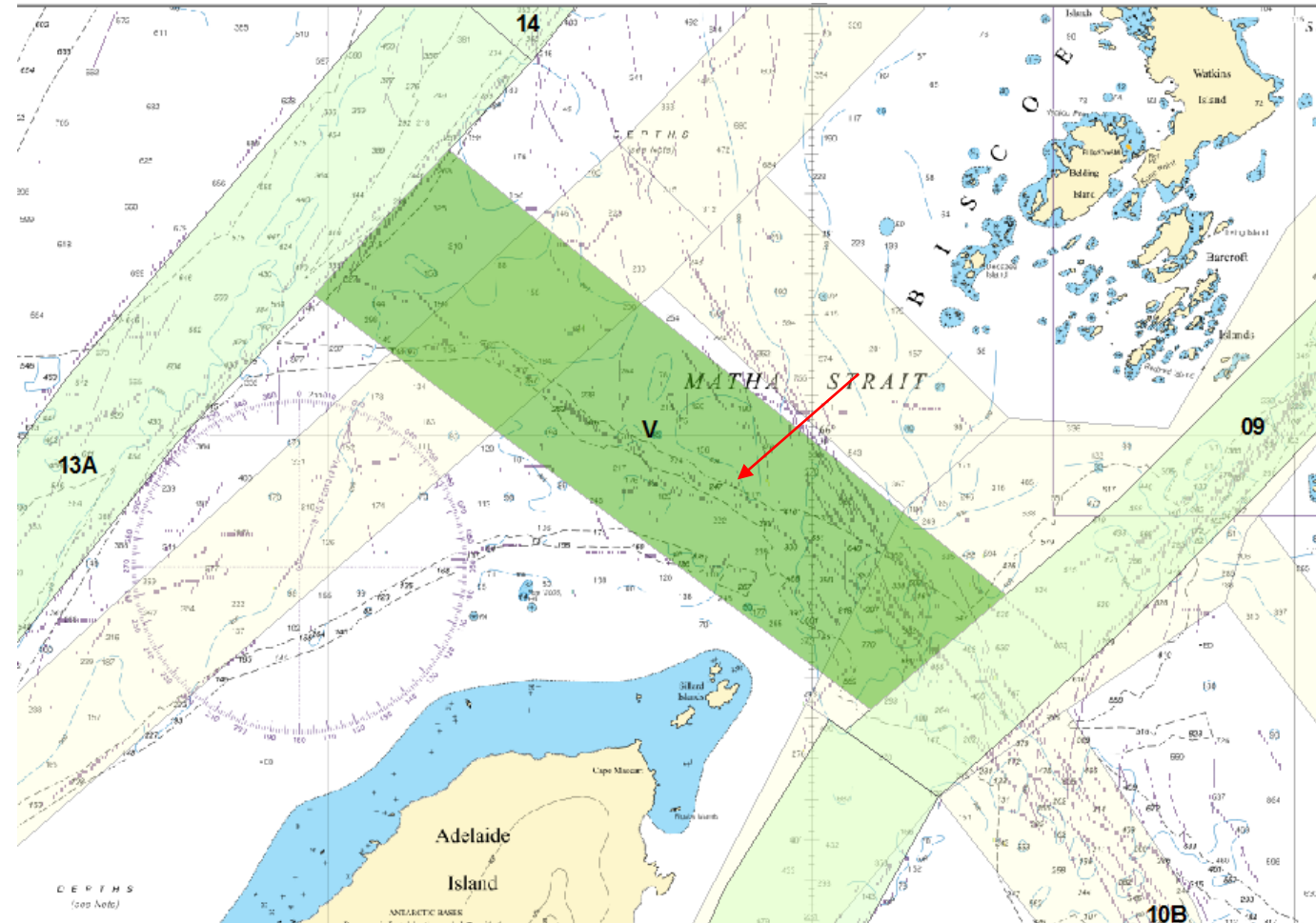
IHO

International
Hydrographic
Organization

BC 'V' – Pendleton Strait (INT9519 UK)

- Amended to reflect traffic and data
- Extended to incorporate changes to MSR 9, 10A & 13

UK2021/22 surveys



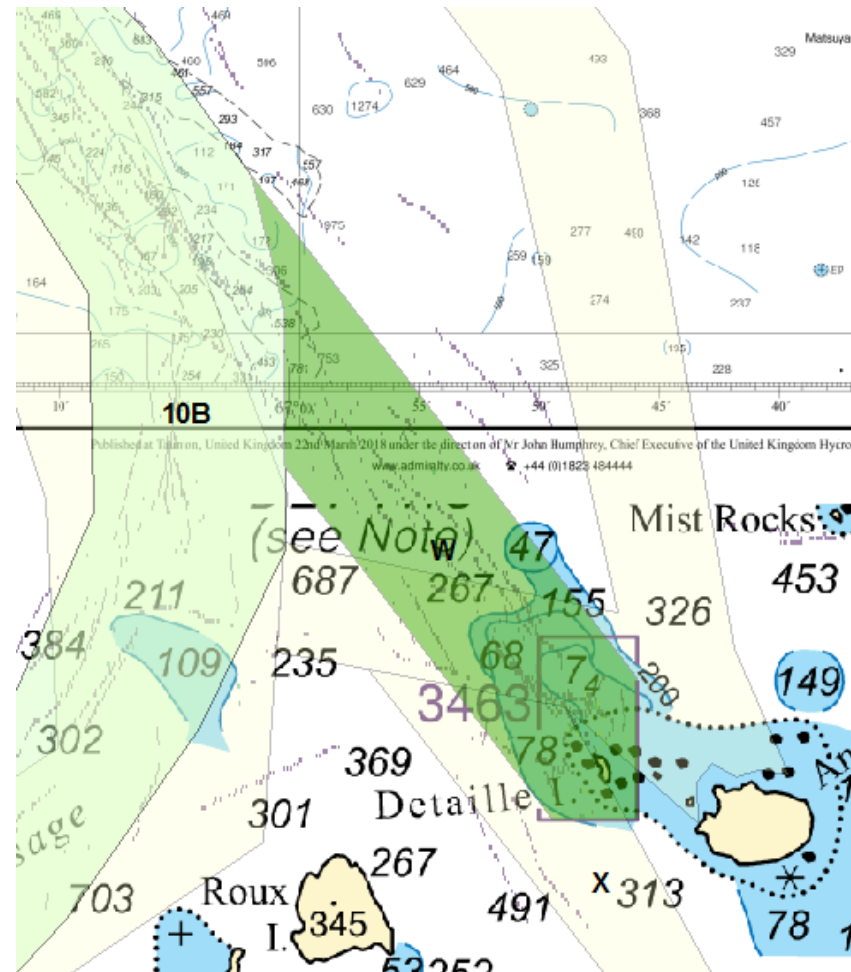


IHO

International
Hydrographic
Organization

BC 'W' – Detaille Island & Approaches (INT 9117 UK & 9161 CL)

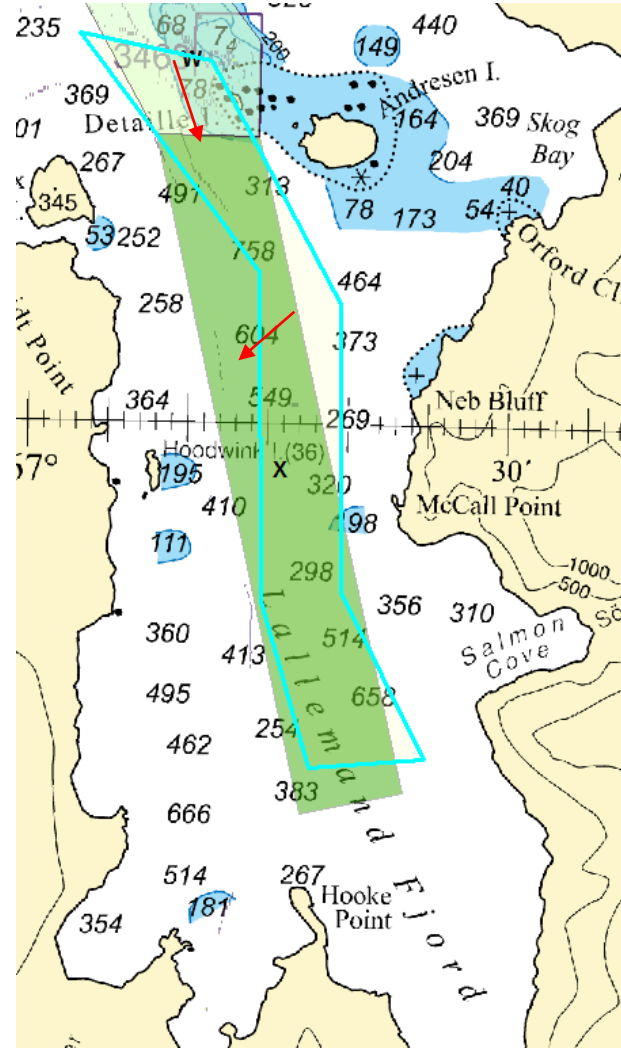
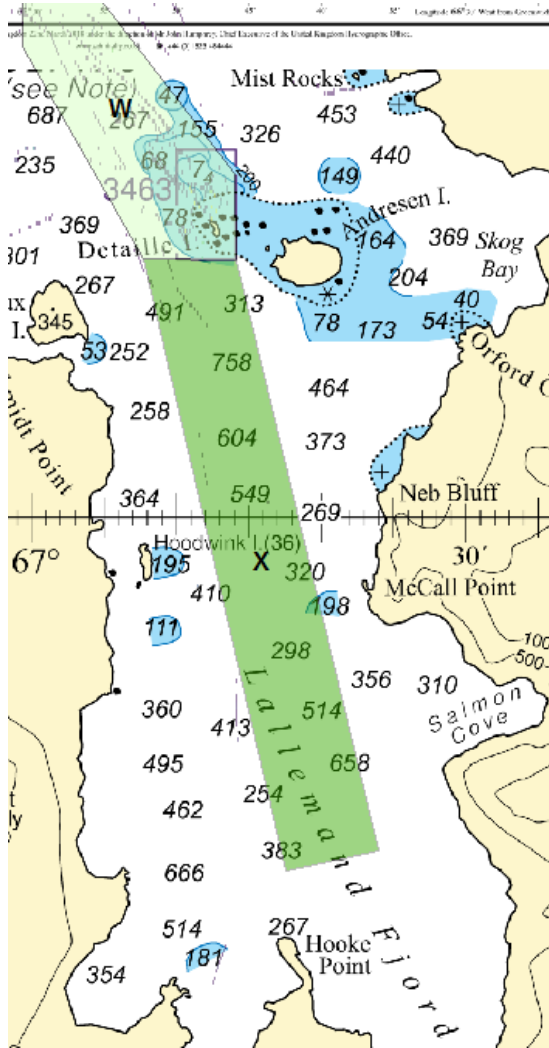
- Amended to reflect traffic and data
- Extended to incorporate changes to MSR 10B
- Section from Crystal Sound and to Andersen Island deleted



HCA-18, May 2022

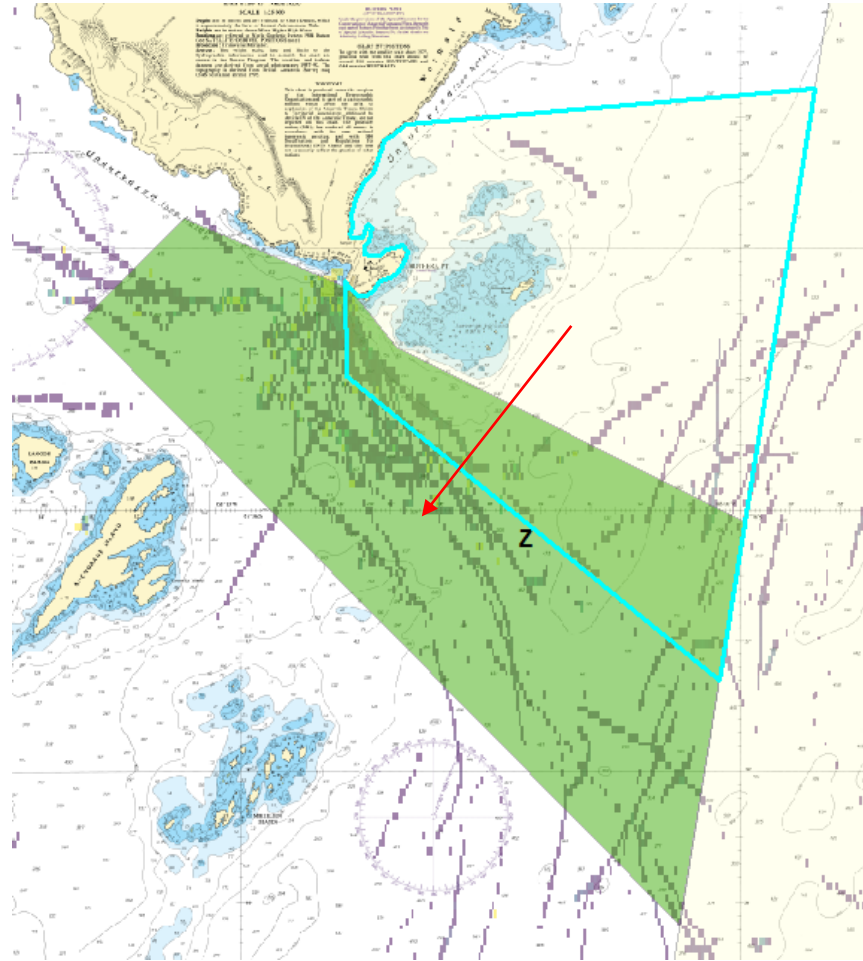
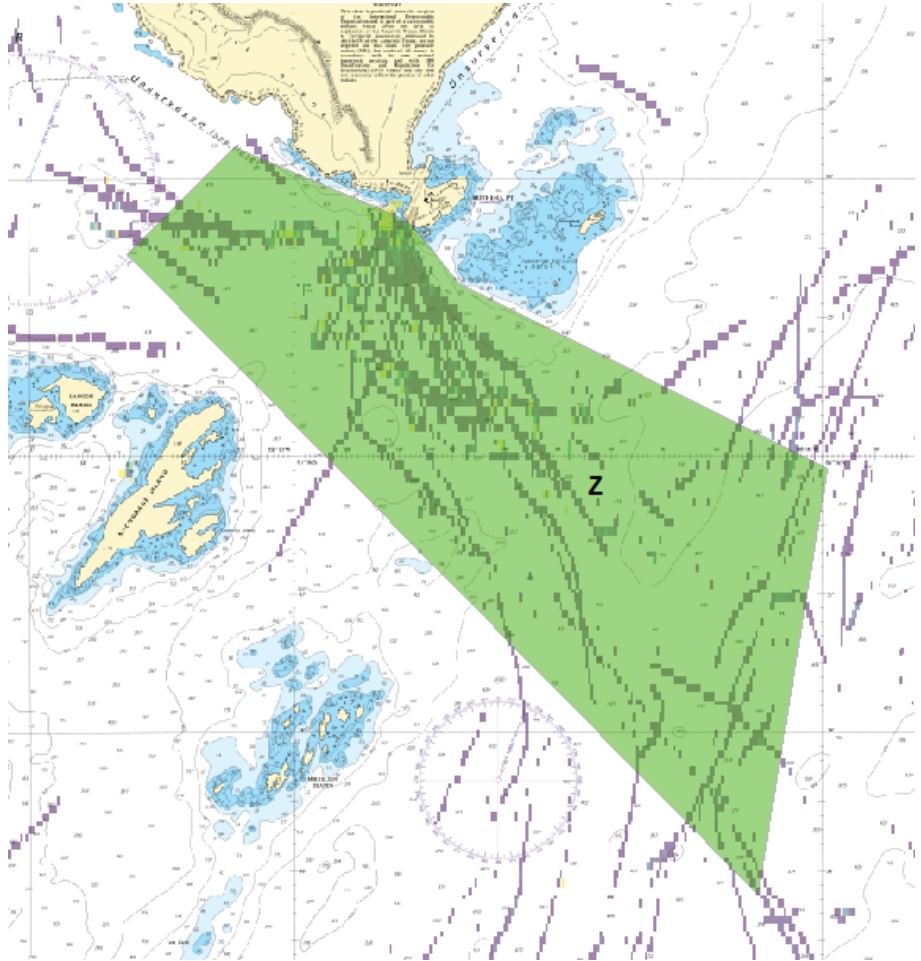
BC 'X' – Lallemand Fjord (INT 9161 CL)

- Amended to incorporate changes to BC 'W'



BC 'Z' – Rothera (INT 9109 CL)

- Amended to reflect traffic and avoid area around Killingbeck Islands which is void of traffic



Action Required

1. Approve changes as proposed at HCA 17
2. Agree proposal to remove MSR 16 & 16a