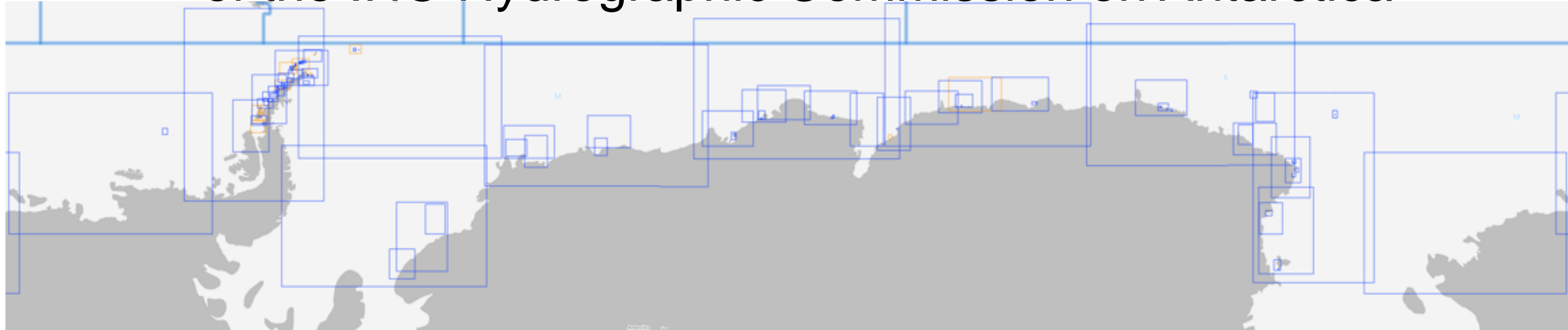




IHO

International
Hydrographic
Organization

18th Conference of the IHO Hydrographic Commission on Antarctica



Report of the INT Chart Coordinator – Region M

Agenda item 07.2C

HCA-18, Berlin, Germany (hybrid), 24-26 May 2022

V1.1 17th May



IHO

Agenda

International
Hydrographic
Organization

Chart Coordination Update

- Region M Production Summary
- Production Update
 - INT Chart & ENC
- Scheme Progress Review
 - Published & Schemed Charts
 - Overlap Report
- Recommendations for HCA

HCA-18, Berlin, Germany (hybrid), 24-26 May 2022



IHO

International
Hydrographic
Organization

Region M Production Summary

HCA-18, Berlin, Germany (hybrid), 24-26 May 2022

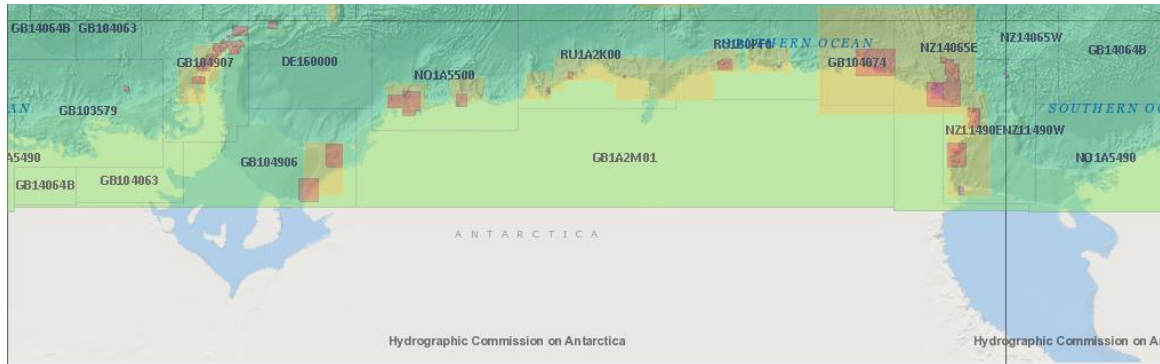
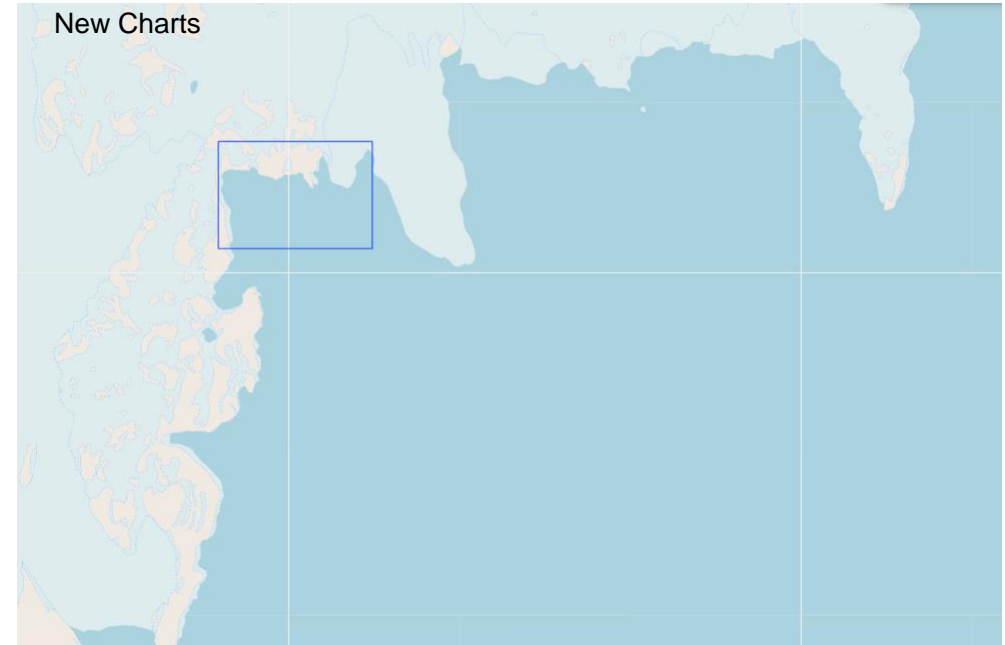


IHO

HCA Region M Production Summary

International
Hydrographic
Organization

	HCA 16	HCA 17	HCA18
Published	92	98	99
Schemed	23	18	17
ENCs		148	152



HCA-18, Berlin, Germany (hybrid), 24-26 May 2022



IHO

International
Hydrographic
Organization

Region M Production Update

HCA-18, Berlin, Germany (hybrid), 24-26 May 2022



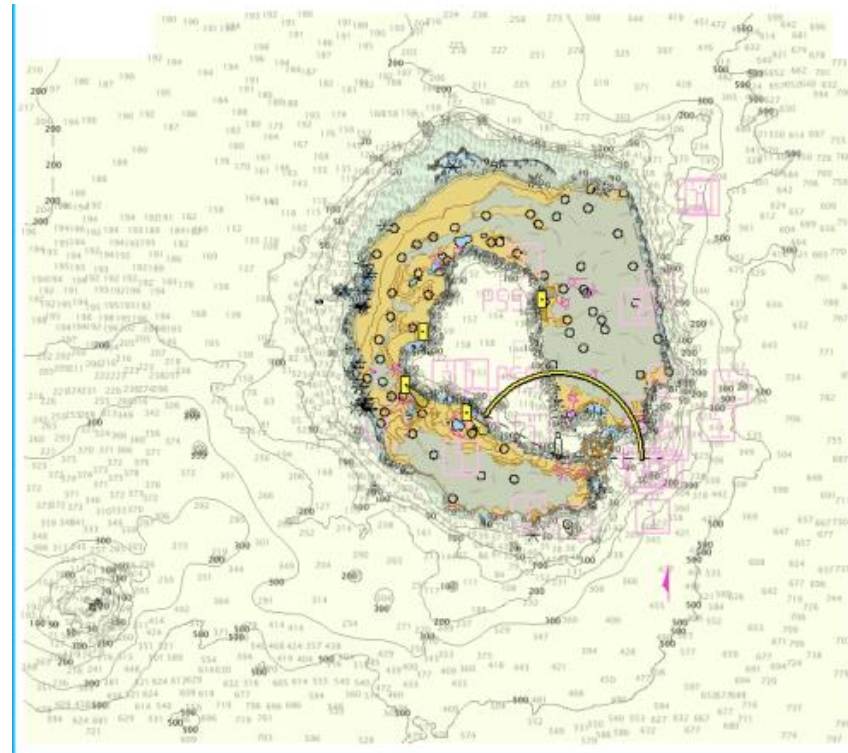
IHO

HCA Region M Production Update

Regional M Production Update – New ENCs Produced Since HCA17 Report

SHN - Argentina

AR407620 (INT 9120) – Isla Deception (New ENC 2022)



HCA-18, Berlin, Germany (hybrid), 24-26 May 2022

Point of Contact: Fabian Vetere



IHO

HCA Region M Production Update

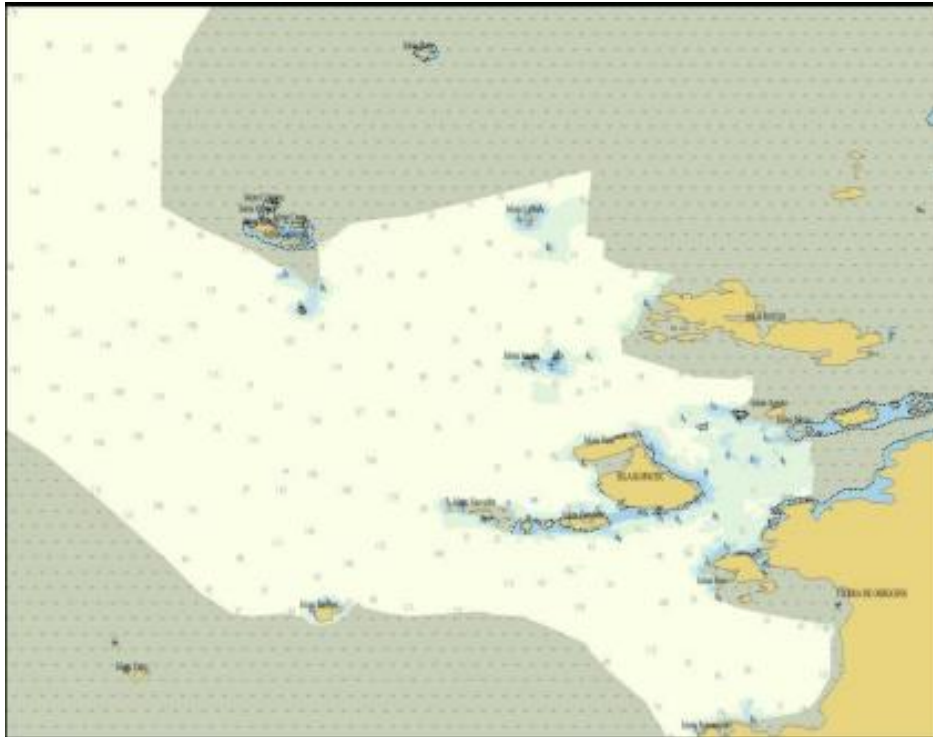
International
Hydrographic
Organization

Regional M Production Update – New ENC's Produced Since HCA17 Report

SHOA - Chile

CL5MA890 (INT 9102) – Rada Covadonga y Accesos (New ENC 2021)

CL6MA891 (INT 9102) – Paso Coloma (New ENC 2021)





IHO

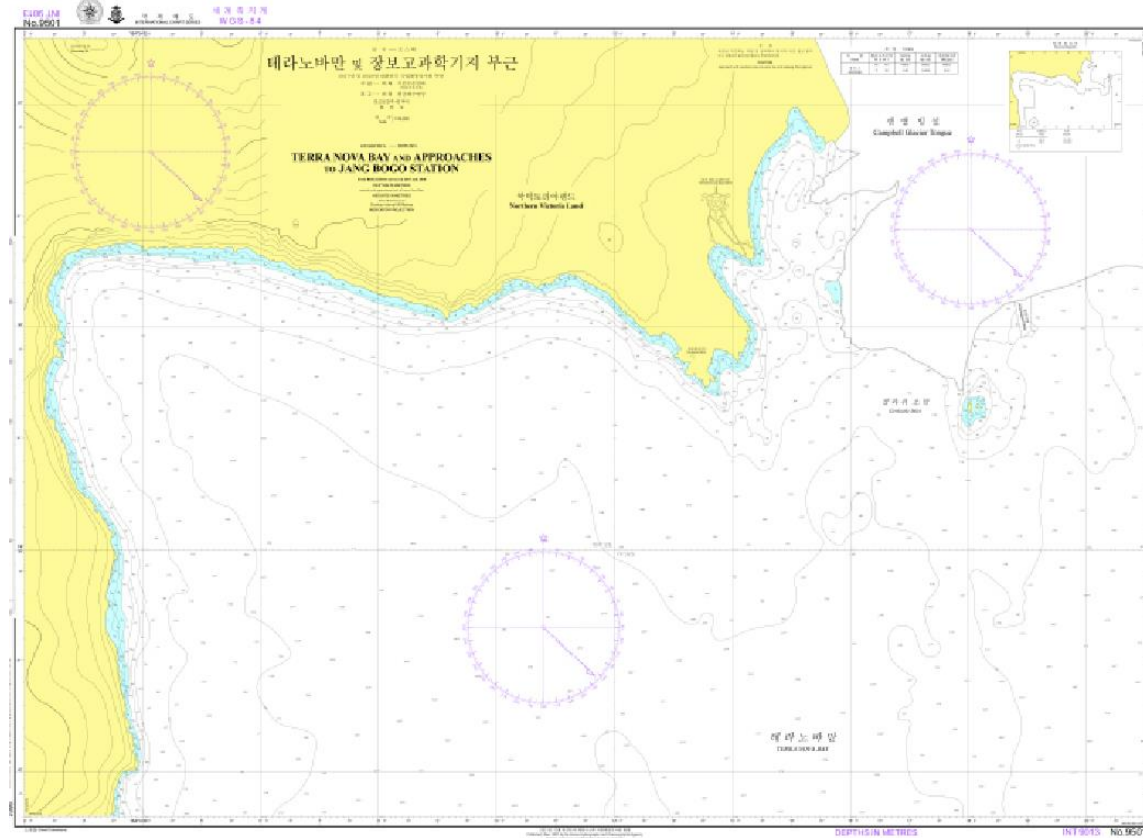
HCA Region M Production Update

International
Hydrographic
Organization

Regional M Production Update – New INT Charts Produced Since HCA16 Report

KHOA - Republic of Korea

INT 9501 – Terra Nova Bay and Approaches to Jang Bogo Station



HCA-18, Berlin, Germany (hybrid), 24-26 May 2022

Point of Contact: Yeong-hwa Jeong



IHO

HCA Region M Production Update

International
Hydrographic
Organization

Regional M Production Update – Significant ENC & INT Chart Updates Since HCA17 Report

SHN - Argentina

AR507570 & INT 9101 – Trinidad Peninsula & Esperanza Base, updated to include surveys of 2003-2005

AR306110 & INT 9140 – South Orkney Islands, updated to include surveys of 2002-2004 & 2011-2017

INT 9120 – Deception Island, updated to include SHN, IHM and UK surveys of 2000-2017

AHS – Australia

AU4602P0 – Davis Station HI 634 & 621B

AU5AQCAS & AU4601P0 – Casey Station HI 621A

AU5AQMAW, AU468062 – Mawson Station HI 607

AU455158 - Macquarie Island HI 625

DHN – Brazil

BR425120 & INT 9126 – King George Bay, updated to include surveys of 2018-19

BR425121 & INT 9125 – Admiralty Bay, updated to include surveys of 2018-19

SHOA – Chile

CL5MA870 – Approach to Whalers Bay, updated to improve WGS84 positioning

HCA-18, Berlin, Germany (hybrid), 24-26 May 2022



IHO

HCA Region M Production Update

Regional M Production Update – New INT Chart or ENC Proposals

No proposals for new INT charts or new ENCs have been received from Member States

HCA-18, Berlin, Germany (hybrid), 24-26 May 2022

International
Hydrographic
Organization



IHO

International
Hydrographic
Organization

Region M Scheme Progress Review

HCA-18, Berlin, Germany (hybrid), 24-26 May 2022



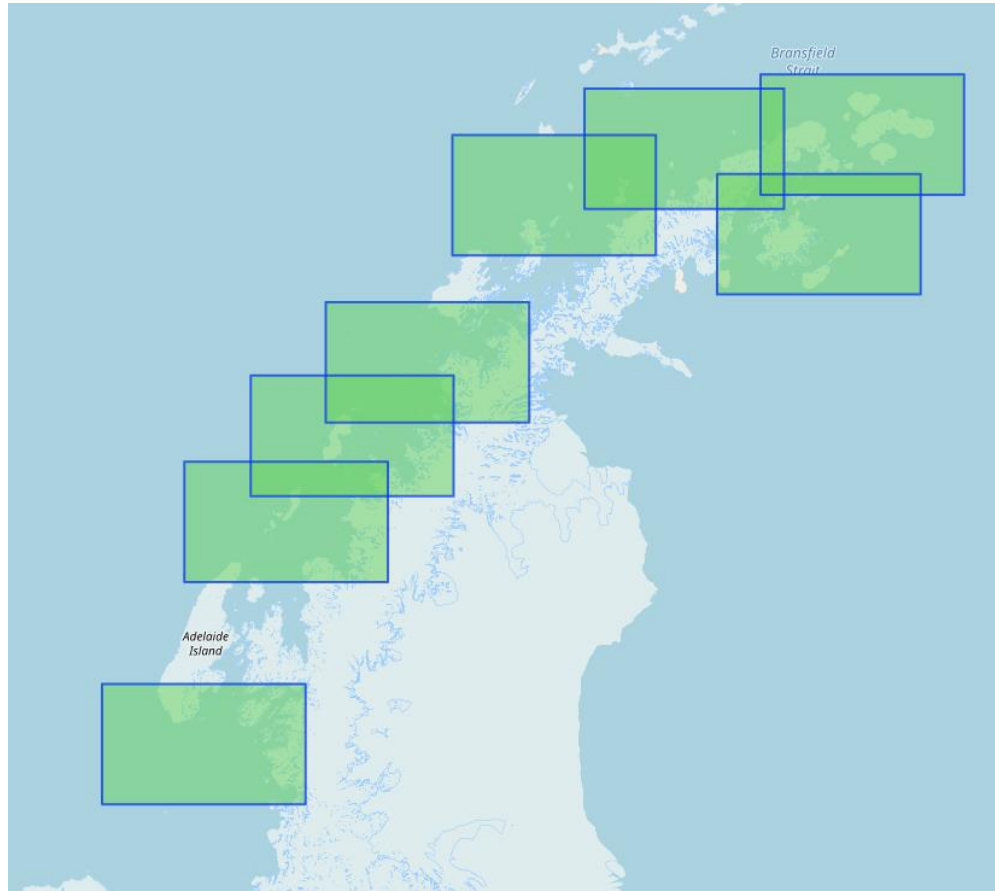
IHO

HCA Region M Scheme Progress

International
Hydrographic
Organization

Coastal Scheme Analysis

Produced



Schemed



HCA-18, Berlin, Germany (hybrid), 24-26 May 2022



IHO

HCA Region M Scheme Progress

Overlap Report

International Hydrographic Organization

IC-ENC REGIONAL HYDROGRAPHIC COMMISSION OVERLAP REPORT - HYDROGRAPHIC COMMISSION FOR ANTARCTICA - MAY 2022												
ID	RENC Membership	RHC	ENC 1	ENC 2	Area	Usage Band	ENC 1 Scale	ENC 2 Scale	Overall Severity of Risk	IC ENC Justification	IC ENC Action requested	HPWG Chair Comments
625	IC-ENC	HCA	CL4MA956	GB403207	Gerlache Strait Wilhelmina Bay	4	45,000	22,000	LOW	Area of little SOLAS traffic, covered by UNSARE on both cells. Minor differences between content.	HO requested to clip NC, or liaise with IC-ENC	Resolved since HCA 16 GB clipped for overlapping data in channel. Adjusted comp scale in area of charted data to give preference over unsurveyed area
626	IC-ENC	HCA	CL4MA957	GB403207	Gerlache Strait Wilhelmina Bay	4	45000	22,000	LOW	Overlap only covers LNDARE and UNSARE, with very little SOLAS traffic expected within the area.	HO requested to clip NC, or liaise with IC-ENC	Resolved since HCA 16 by amendment to comp scale to resolve overlap item 626
749	IC-ENC	HCA	GB203572	RU2A1AD0	Marguerite Bay Laubeuf Fjord	2	250000	700000	LOW			New at HCA 17 GB cell with later dates takes priority due to comp scale
930	IC-ENC - PRIMAR	HCA	NZ11490E	FR275910	Ross Sea	1	1500000	1500000	LOW			New for HCA 18 Based on same scale overlapping INT charts FR NZ to resolve based on underlying data
125	IC-ENC	SAIHC HCA	RU1A2K00	AU160060		1	3000000	3500000	LOW	Overlap situated just off the coast of Antarctica, very low levels of traffic. Small scale compilation scale.	Clip to common border	No change since HCA 16
126	IC-ENC	SAIHC HCA	RU1B0PF0	AU160060		1	3000000	3500000	LOW	Overlap is located in the Antarctica, it charts very deep waters. There is a 119m shoal depth which is captured on AU160000 which is not captured on RU1B0PF0. Little traffic as expected.	HOs to discuss and resolve overlaps	No change since HCA 16
127	IC-ENC	SAIHC HCA	RU1B0PF0	AU160090		1	3000000	3500000	LOW	Overlap is located in the Antarctica, it charts very deep waters. Little traffic as expected.	HOs to discuss and resolve overlaps	No change since HCA 16
128	IC-ENC	SAIHC HCA	RU1B0PF0	AU160120		1	3000000	3500000	LOW	Overlap is located in the Antarctica, it charts very deep waters. Little traffic as expected.	HOs to discuss and resolve overlaps	No change since HCA 16
30	IC-ENC - NON RENC	HCA	RU2BNM40	JP200DD0		2	700000	700000	LOW (U)	Overlap situated just off the coast of Antarctica, very low levels of traffic. Small scale compilation scale.	HOs to discuss and resolve overlaps	No change since HCA 16
415	IC-ENC	HCA	CL4MA960	GB400445	Lemaire Channel	4	45000	22000	POTENTIAL (MEDIUM)	General depiction of bathymetry similar between cells, CL cell has a higher area of UNSARE than on the GB cell and UWTRCs not shown.	HO requested to clip NC, or liaise with IC-ENC	New for HCA 18 Further detail requested from IC-ENC and SHOA Different comp scales Option to discuss at HPWG workshop
414	IC-ENC	HCA	CL5MA980	GB57211A	Port Lockroy	5	22000	12000	POTENTIAL (UNASSESSED)		HO requested to clip NC, or liaise with IC-ENC	New for HCA 18 Further detail requested from IC-ENC and SHOA Different comp scales CL National ENC (ie not INT equivalent) Option to discuss at HPWG workshop

HCA-18, Berlin, Germany (hybrid), 24-26 May 2022



IHO

HCA Region M – Recommendations for HCA

International
Hydrographic
Organization

Proposed Recommendation

- Note the Report