

Status Report on IHO HCA-GIS

May 2022

IHO Secretariat



IHO

International
Hydrographic
Organization

Background

- HCA-GIS visualizes various hydrographic data and metadata around the Antarctic region.
- IHO Secretariat maintains and improves it.
- Some information is from MS and MS's contribution is essential.
- See the “Guidebook for HCA-GIS dataset” for details.



IHO

International
Hydrographic
Organization

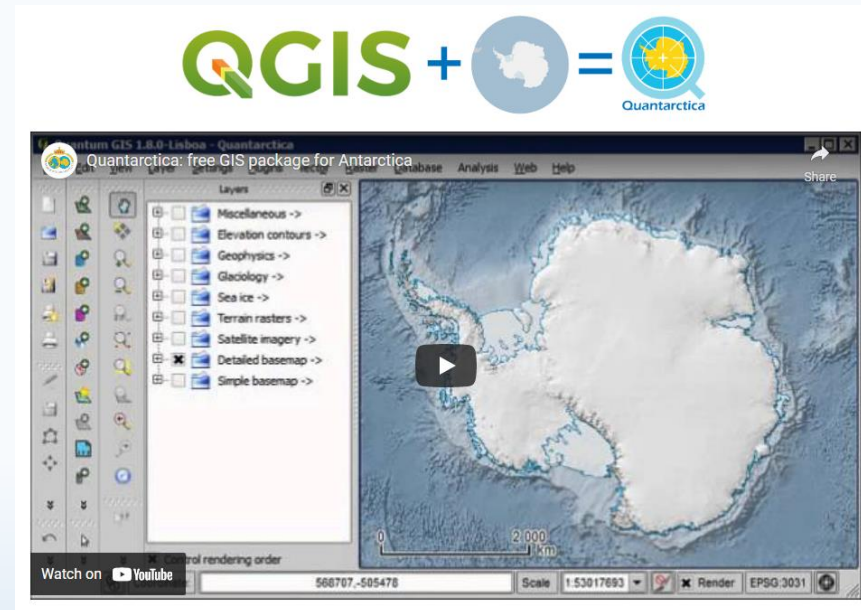
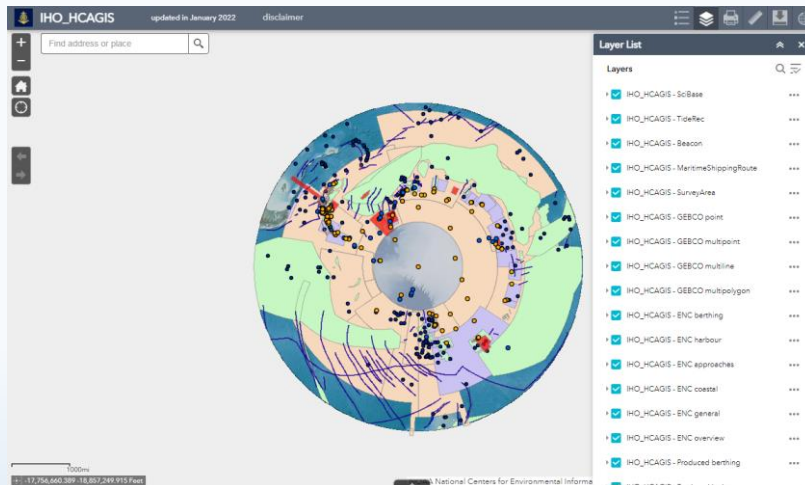
HCA-18, Berlin, Germany, 24 – 26 May 2022

Background (cont.)

- The link is as follows;

<https://iho.maps.arcgis.com/apps/webappviewer/index.html?id=664ba846acc04f36a4326fbcd19b51a0>

- These datasets are utilised in “Quantarctica” run by Norwegian Polar Institute



IHO

International
Hydrographic
Organization

HCA-18, Berlin, Germany, 24 – 26 May 2022

Report on Decisions/Actions from HCA-17

- HCA17/20

HCA Secretariat thanked the **HPWG Chair** for the provision of the updated MSRs to be used in GIS (2 versions to be made available: “historical” version (June 2016) derived from graphics, proposed amended version (June 2021)).

HCA Secretariat to make them available to all **HCA Members** in the IHO GIS/HCA/Quantarctica infrastructure.

➤ Completed



IHO

International
Hydrographic
Organization

HCA-18, Berlin, Germany, 24 – 26 May 2022

Current situation

- Being operated steadily
- IHO received the survey limits of UK (UKHO) and Spain (IHM) on October 2021, and reflected them to HCA GIS



IHO

International
Hydrographic
Organization

HCA-18, Berlin, Germany, 24 – 26 May 2022

Layer List of HCA GIS

Layer	Description	Data source	Who collects/submits?
SciBase	Science and research base station	MS	MS
TideRec	The location and contact point for observation of tide	MS	MS
Beacon	Peninsula Beacon	HPWG	HPWG
MaritimeShippingRoute	Amended Peninsula MSR	HPWG	HPWG
SurveyArea	The area where hydrographic (bathymetric) surveys were historically conducted	MS	MS



IHO

International
Hydrographic
Organization

HCA-18, Berlin, Germany, 24 – 26 May 2022

Layer List of HCA GIS (cont.)

Layer	Description	Data source	Who collects/submits?
GEBCO_point	Point undersea features	GEBCO Gazetteer	IHO Secretariat
GEBCO_multipoint	Point undersea feature		
GEBCO_multiline	Line undersea feature		
GEBCO_multipolygon	Area undersea feature		
ENC_berthing	ENC coverage (band6)	IHO ENC Catalogue	IHO Secretariat
ENC_harbor	ENC coverage (band5)		
ENC_approaches	ENC coverage (band4)		
ENC_coastal	ENC coverage (band3)		
ENC_general	ENC coverage (band2)		
ENC_overview	ENC coverage (band1)		



IHO

International
Hydrographic
Organization

HCA-18, Berlin, Germany, 24 – 26 May 2022

Layer List of HCA GIS (cont.)

Layer	Description	Data source	Who collects/submits?
INT_produced_berthing	INT chart produced (- 7,499)	INToGIS II	IHO Secretariat
INT_produced_harbor	INT chart produced (7,500 - 29,999)		
INT_produced_approach	INT chart produced (30,000 - 99,999)		
INT_produced_coastal	INT chart produced (100,000 - 499,999)		
INT_produced_overview	INT chart produced (500,000 -)		
INT_schemed_berthing	INT chart schemed (- 7,499)		
INT_schemed_harbor	INT chart schemed (7,500 - 29,999)		
INT_schemed_approach	INT chart schemed (30,000 - 99,999)		
INT_schemed_coastal	INT chart schemed (100,000 - 499,999)		
INT_schemed_overview	INT chart schemed (500,000 -)		



IHO

International
Hydrographic
Organization

HCA-18, Berlin, Germany, 24 – 26 May 2022

Proposal for improvement

- Re-organize scales of INT charts based on S-11

Band	Current	Proposed
Overview	500,000-	2,000,000-
General	non	350,000-1,999,999
Coastal	100,000-499,999	75,000-349,999
Approach	30,000-99,999	30,000-74,999
Harbour	7,500-29,999	7,500-29,999
Berthing	-7,499	-7,499



IHO

International
Hydrographic
Organization

HCA-18, Berlin, Germany, 24 – 26 May 2022

Online Form for Data Submission

- Online form has been prepared for data submission.


https://iho.formstack.com/forms/web_form_hca_gis

- MS can submit the following data;

- ✓ Survey area (polygon)
- ✓ Scientific Base (point)
- ✓ Tidal station (point)
- ✓ Shipping routes (polygon)

****Any other information can be updated by individual notification to the IHO Secretariat.**

A submission page for the HCA GIS data updating



N.B. It takes several days to reflect your input and if needed, you would be further contacted. Some special characters such as angle bracket, double quotation and backslash are not recommended. Submission does not constitute an endorsement or approval and the IHO does not vouch for their validity or accuracy. The Member States are requested to check the correctness of HCA GIS periodically.

For further inquiry, please contact us from "info@iho.int".

Your submission for HCA GIS updating:

The IHO Secretariat will collect and use submitted information only for the original purpose to update the IHO HCA-GIS. Do you consent with it? *

Yes, I consent. No, I don't.

Data provider's Country, Area *

Data provider's Name *

<input type="text"/>	<input type="text"/>	<input type="text"/>
Prefix	First Name	Last Name



IHO

International
Hydrographic
Organization

HCA-18, Berlin, Germany, 24 – 26 May 2022

Actions Required for HCA18

- **Note** this report
- **Approve** the launch of Online Form
- **Submit** the latest information to IHO Secretariat (ESRI Shapefile is preferable)
- **Follow** the format (attributes of layers) as much as possible on submission
- **Discuss** about what improvements are necessary



IHO

International
Hydrographic
Organization

HCA-18, Berlin, Germany, 24 – 26 May 2022