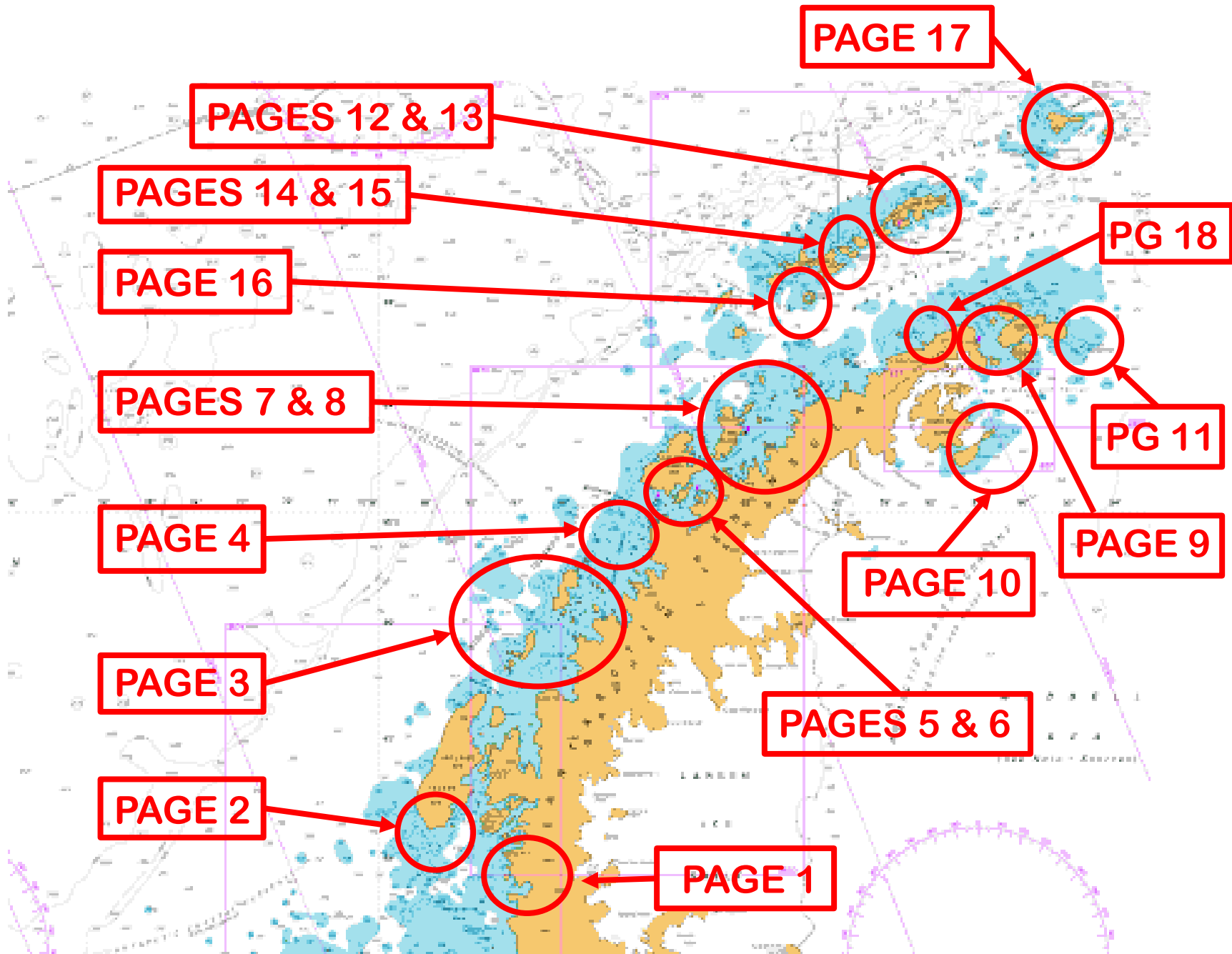
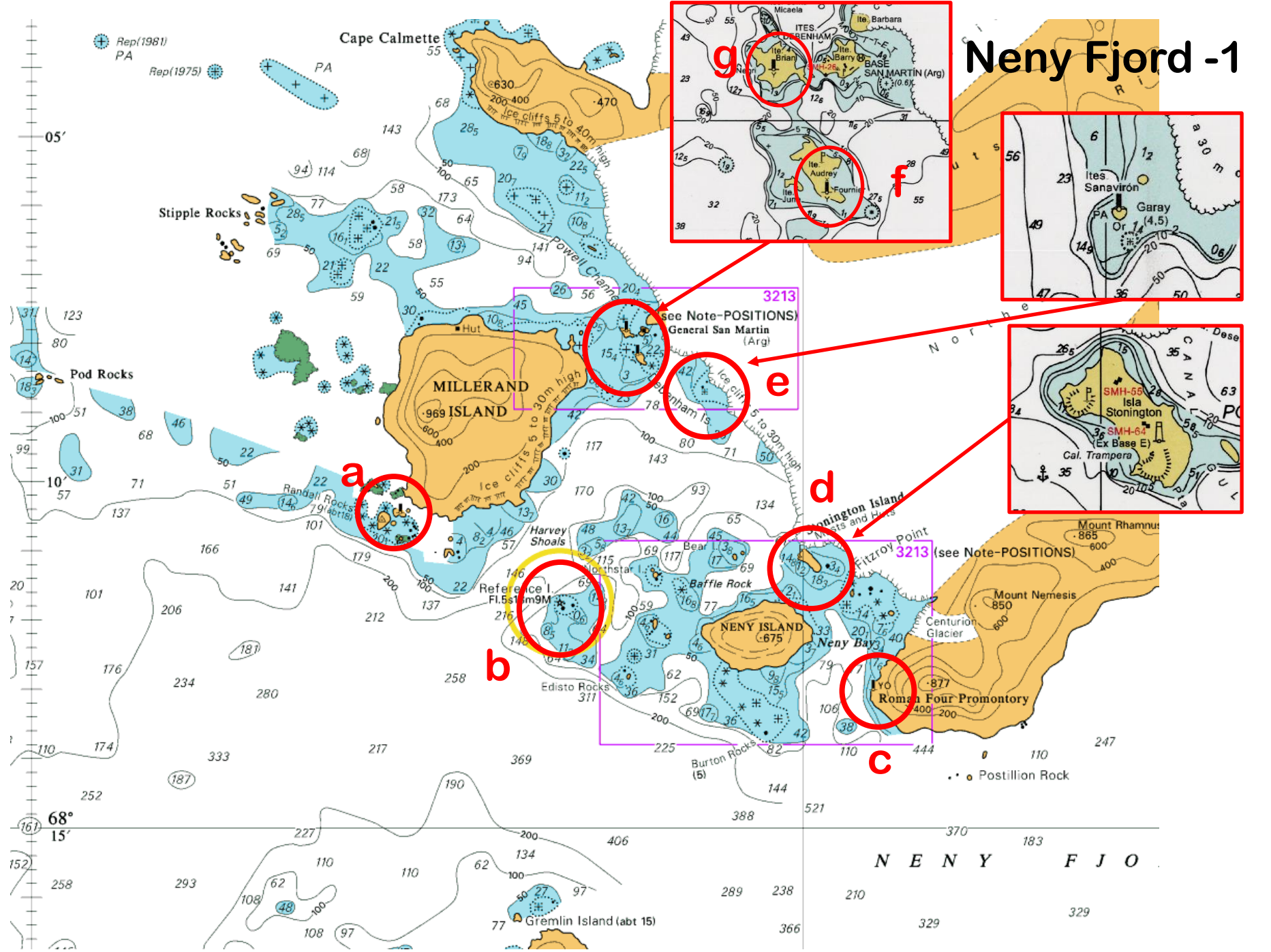




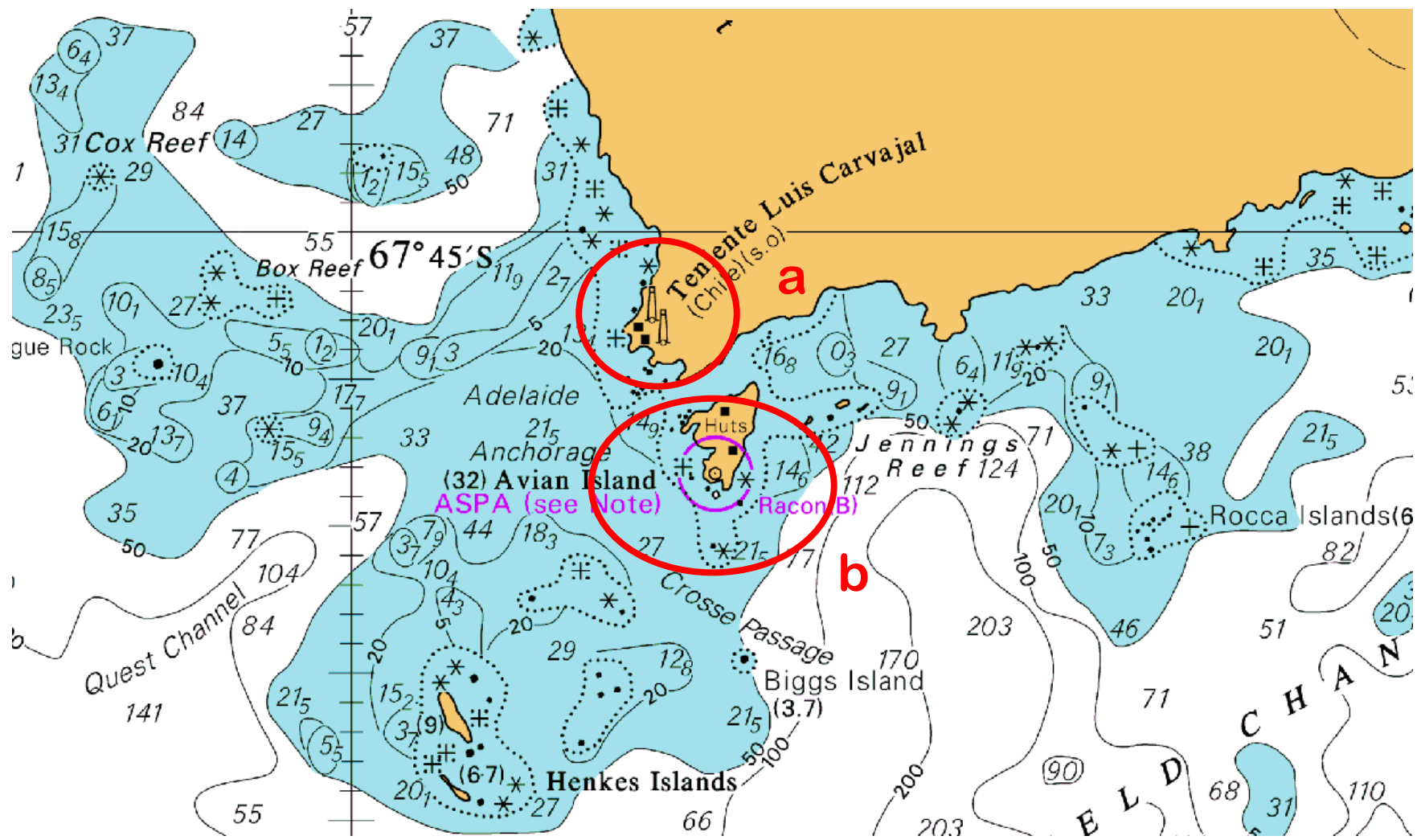
**IHO – HYDROGRAPHIC COMMISSION ON ANTARCTICA  
AIDS TO NAVIGATION CHECK – ANTARCTIC PENINSULA**



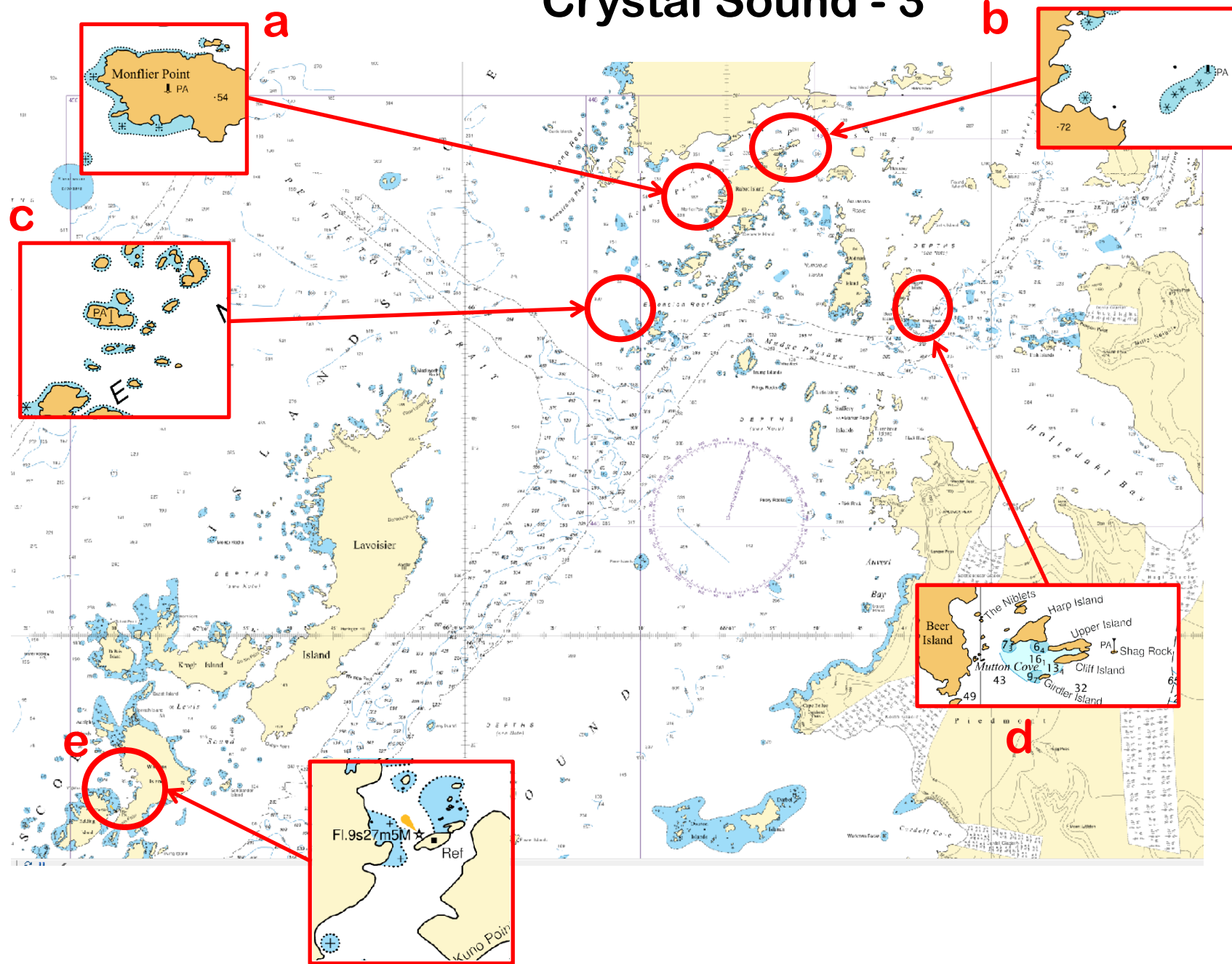
# Neny Fjord - 1



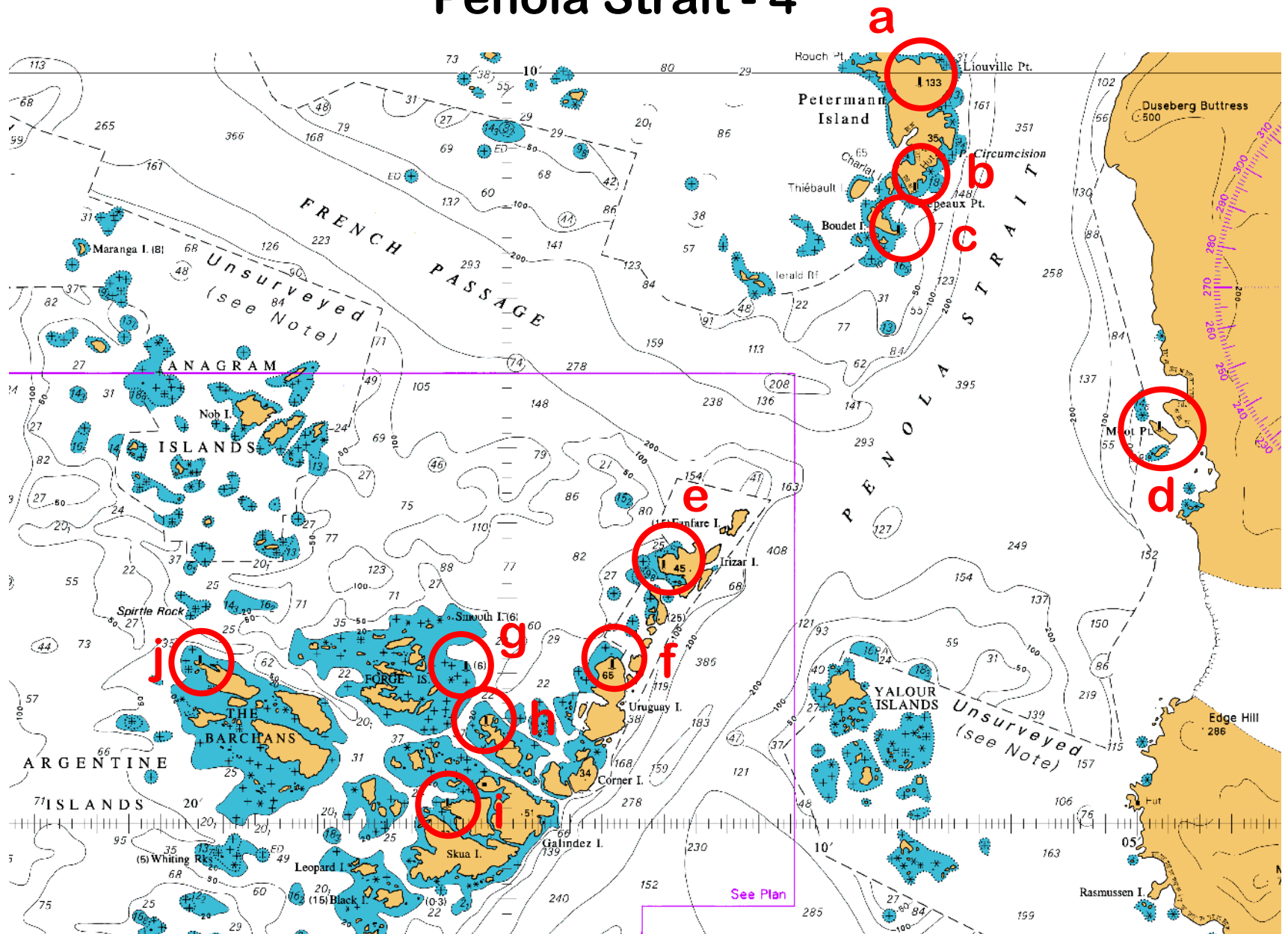
# Adelaide Island -2



# Crystal Sound - 3

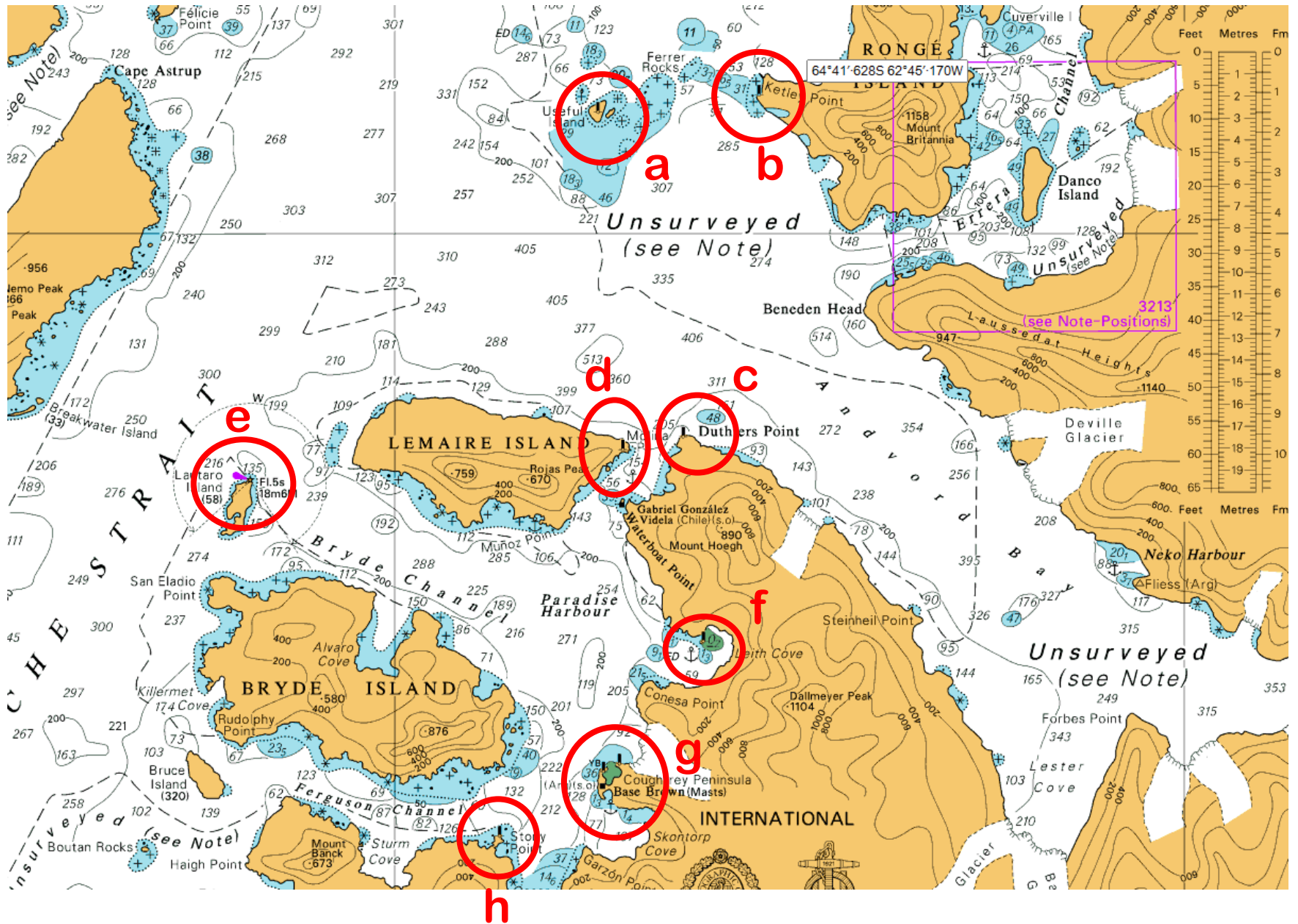


# Penola Strait - 4

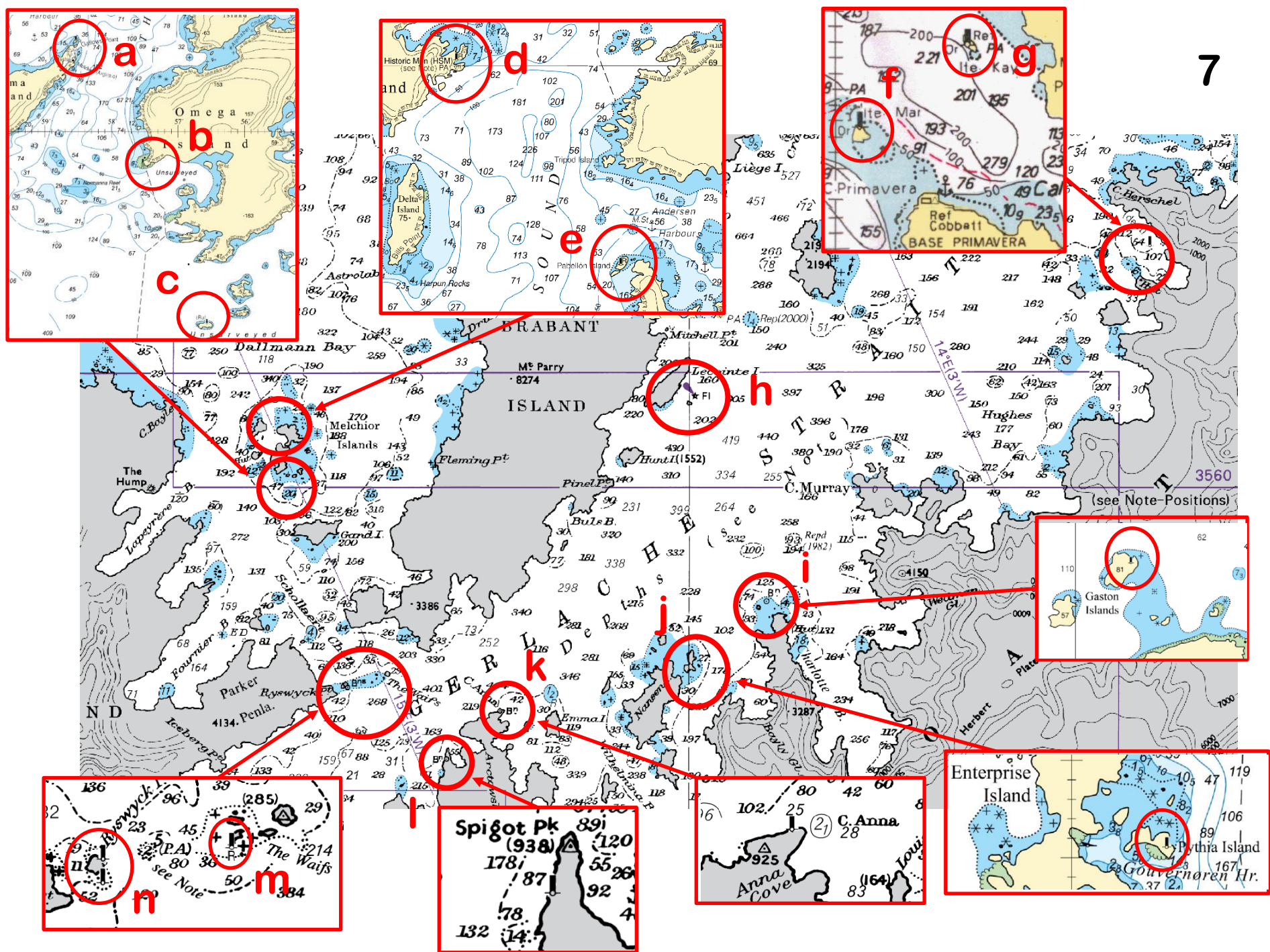




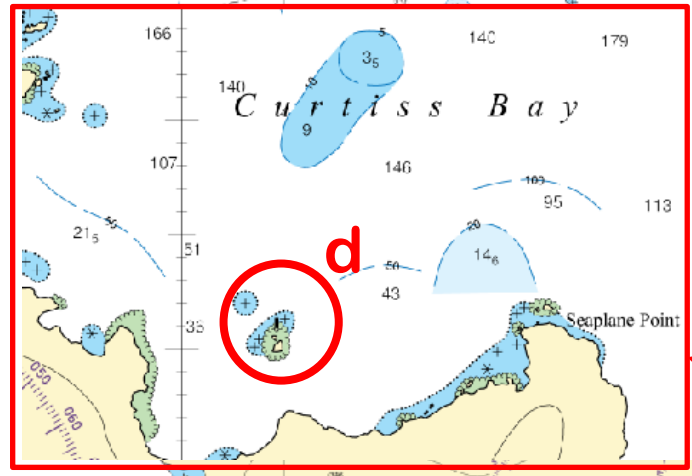
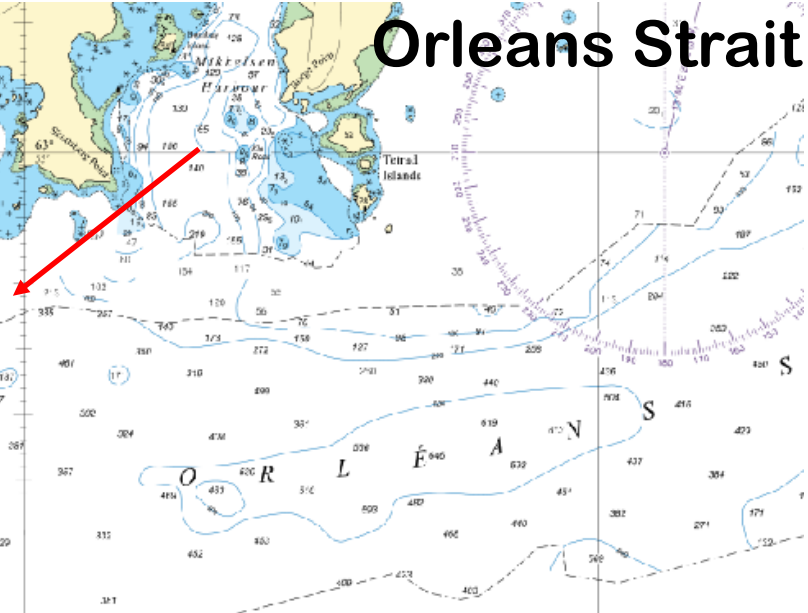
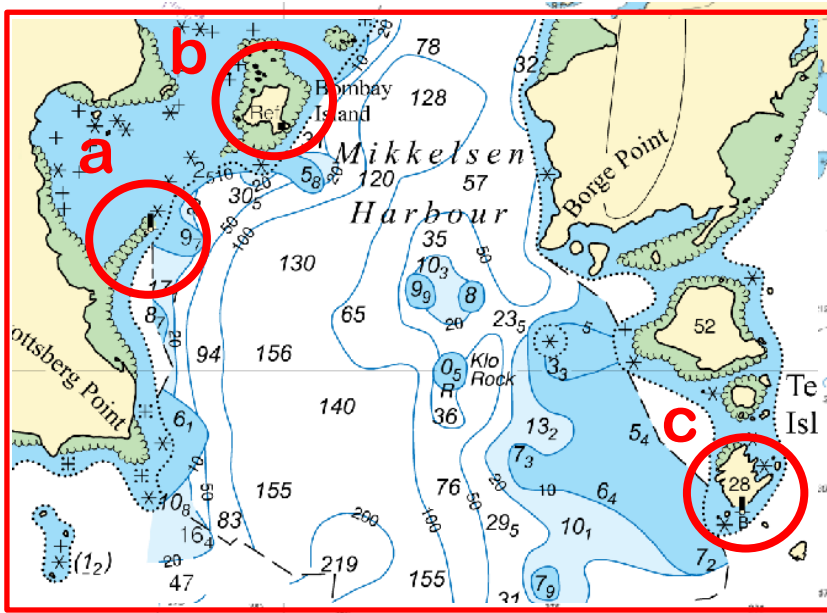
# Gerlache Strait - 6





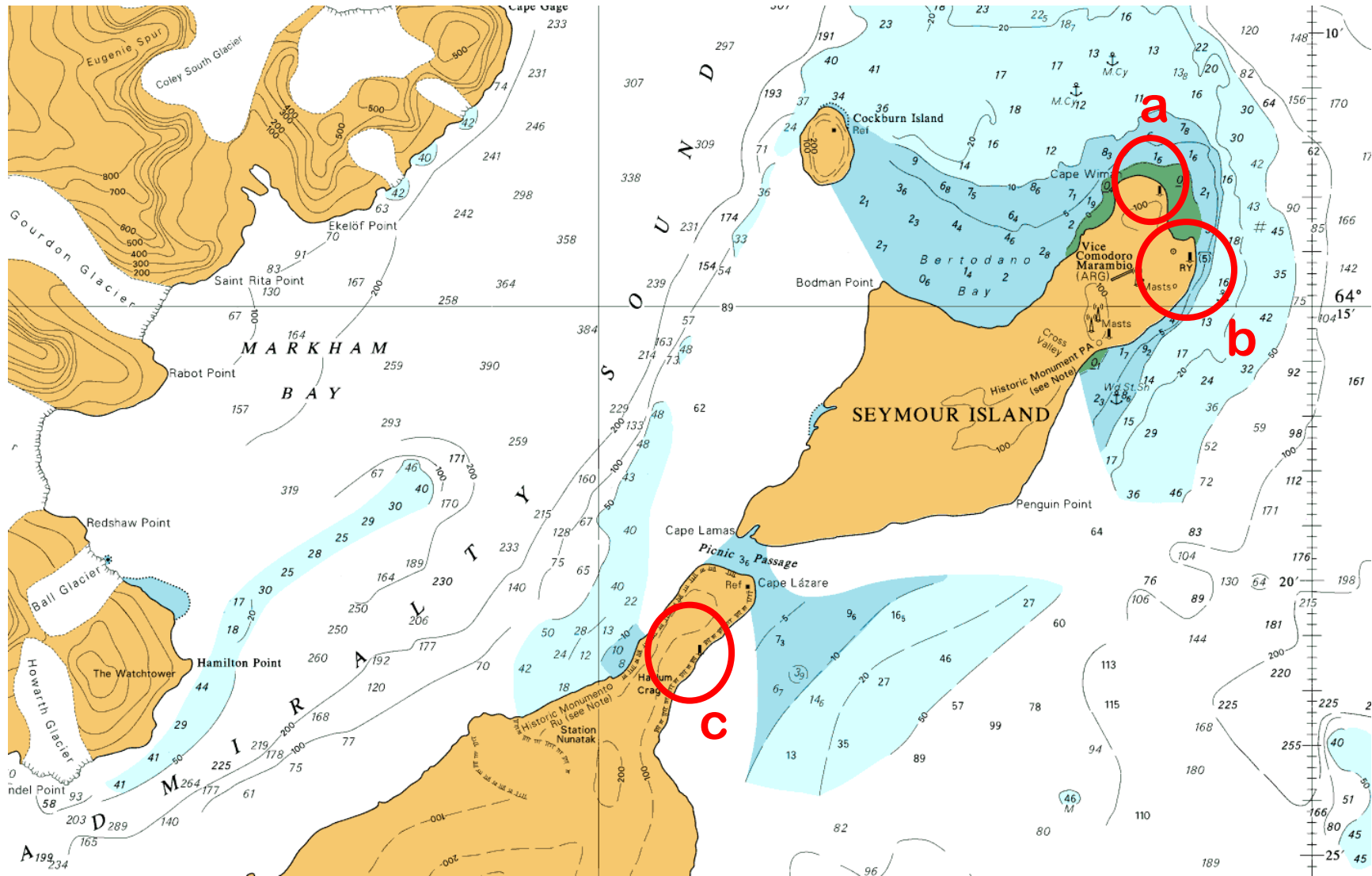


# Orleans Strait - 8

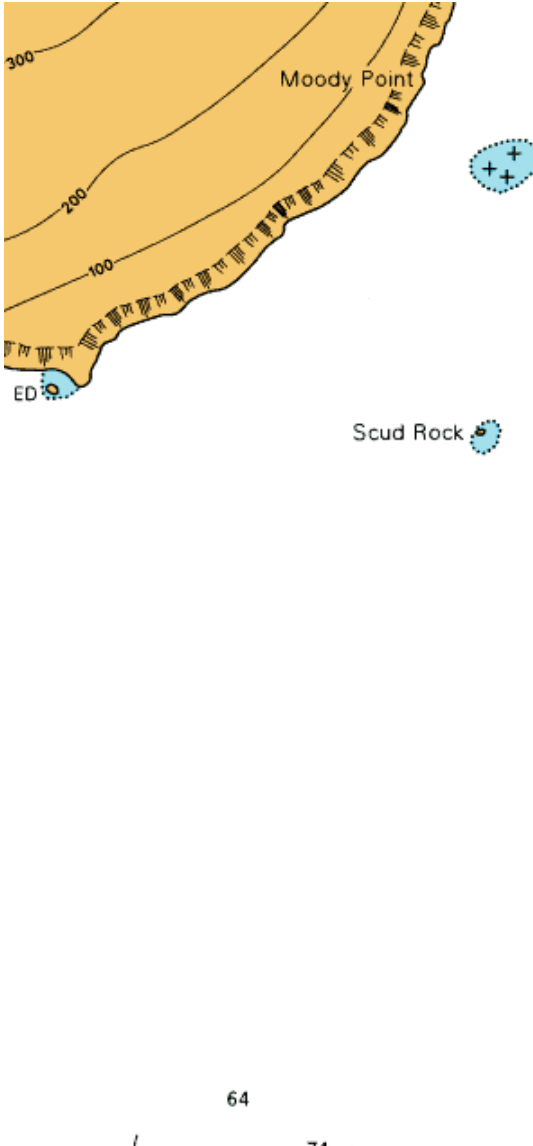




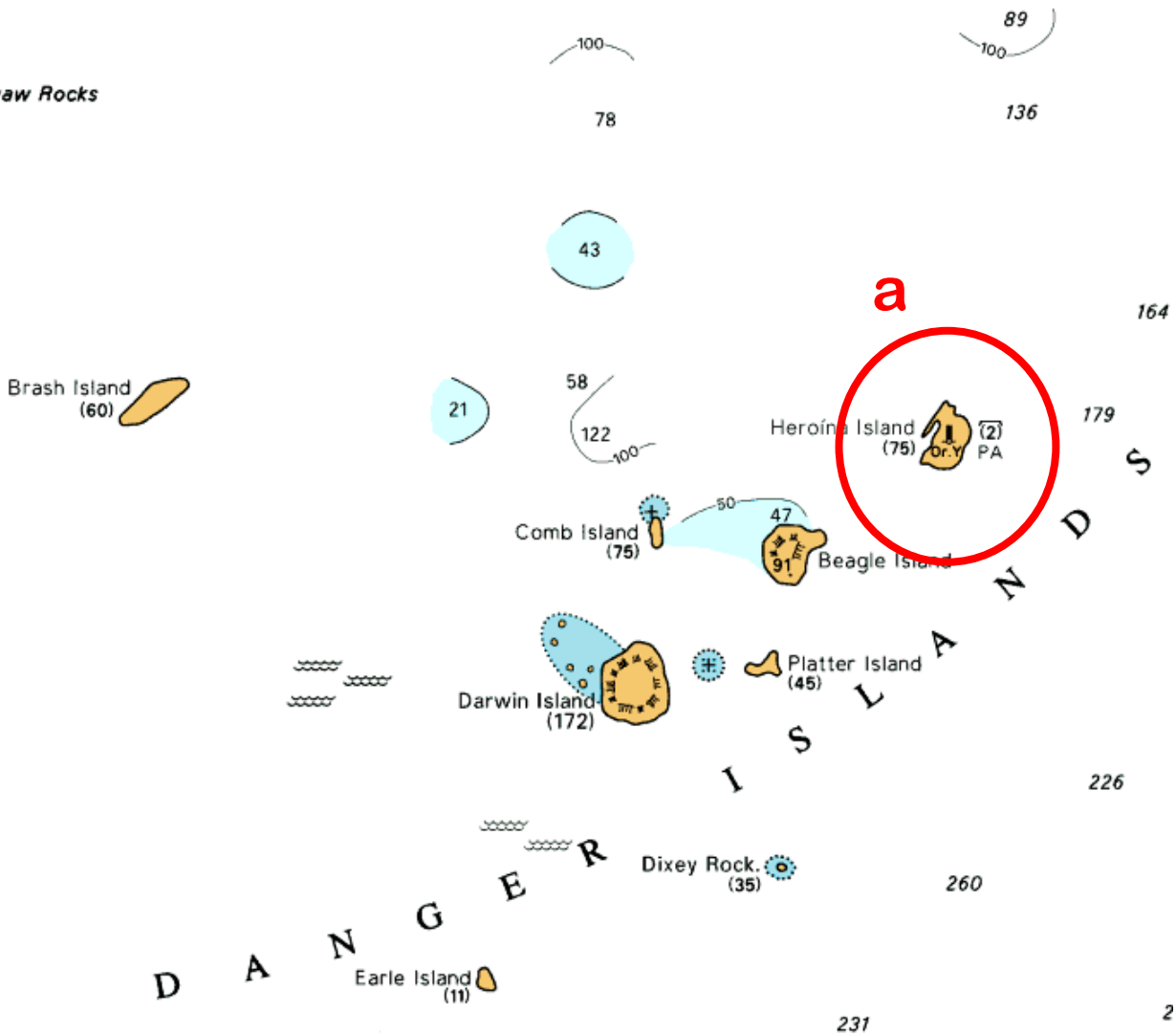
# Admiralty Sound - 10



# Danger Islands - 11



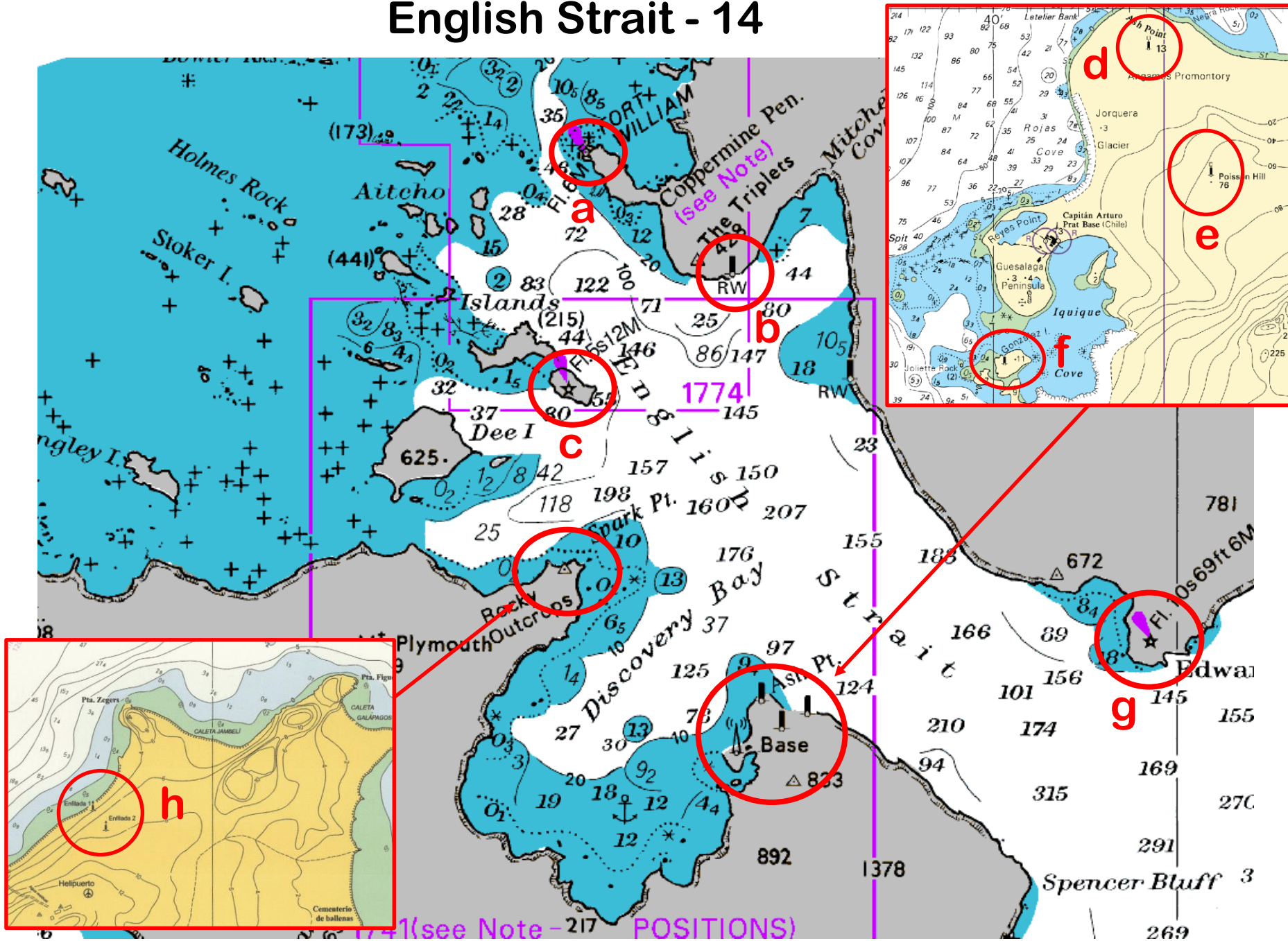
Sailing Directions.





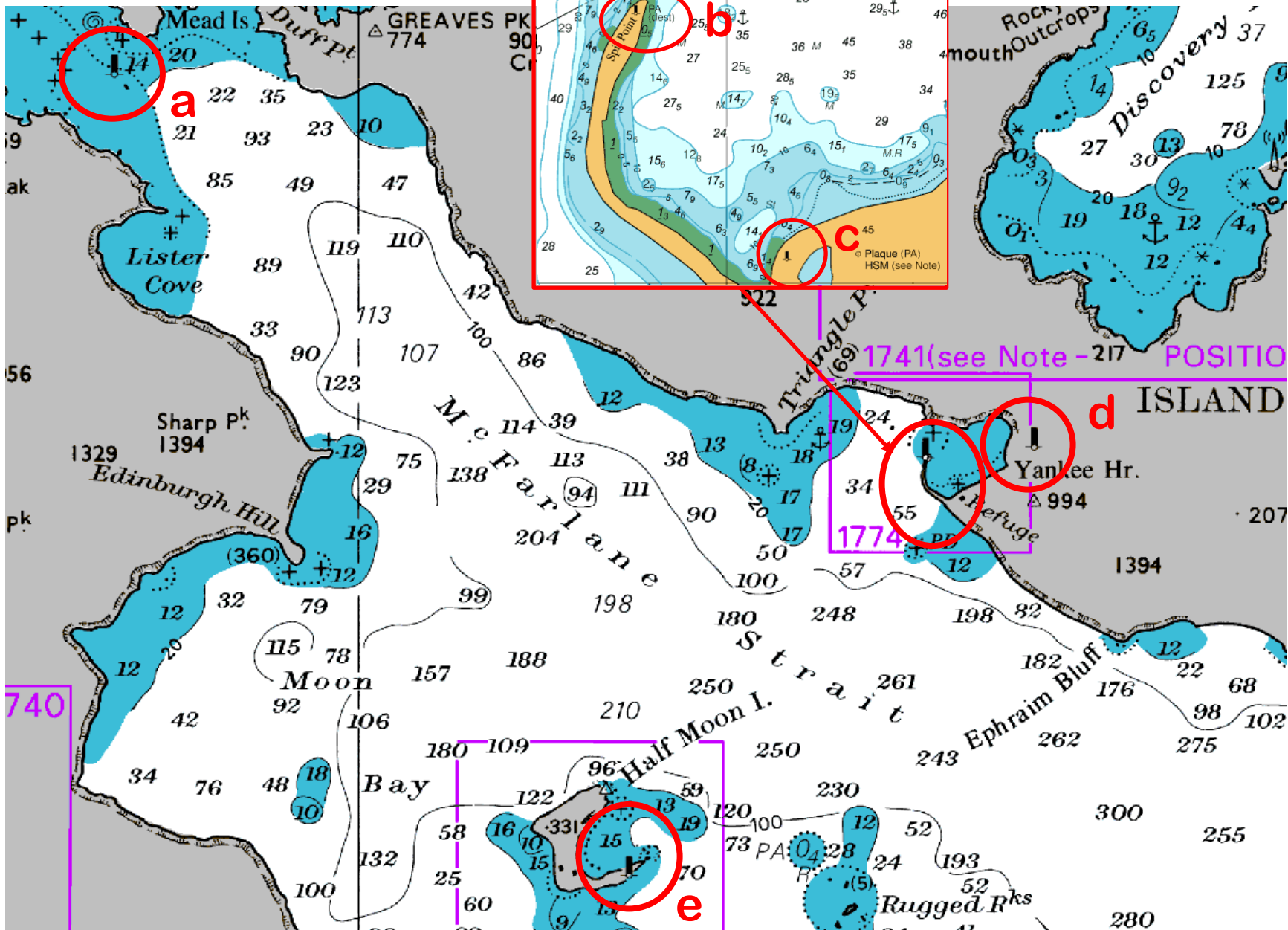


# English Strait - 14

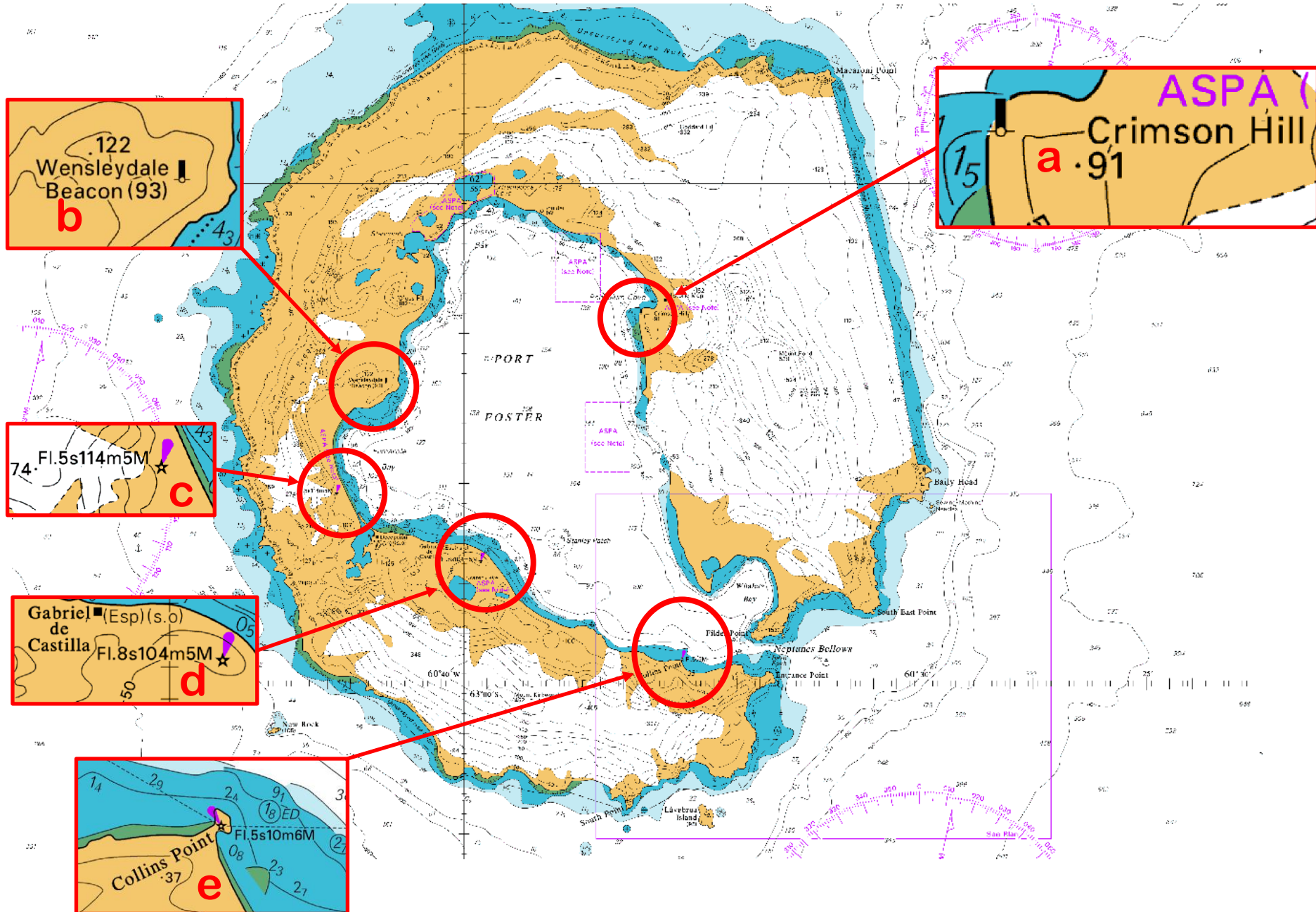




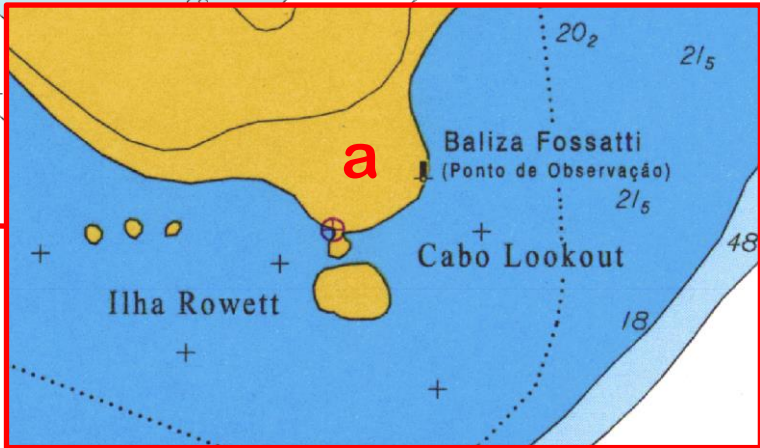
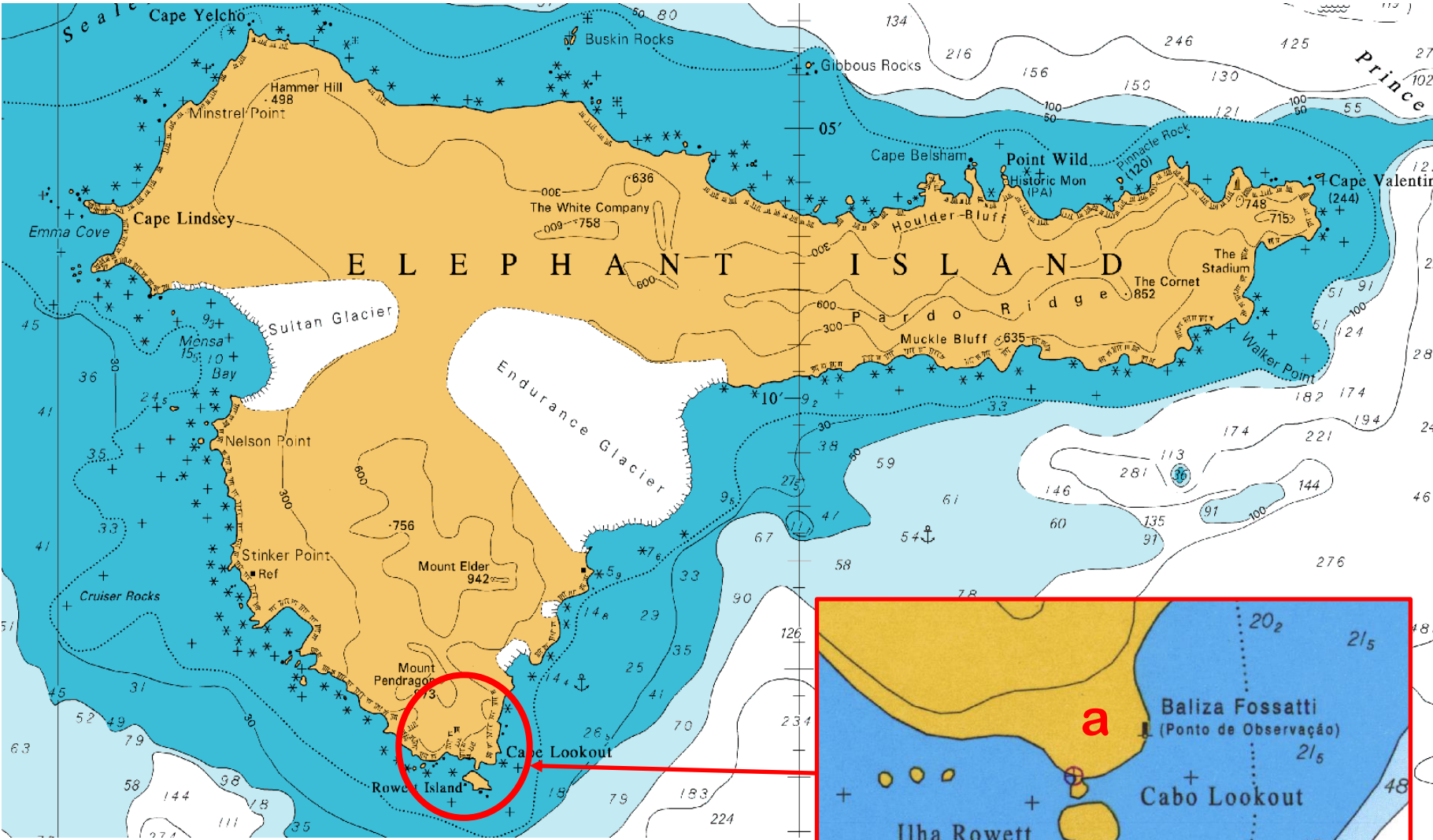
# McFarlane Strait - 15



# Deception Island - 16



# Elephant Island - 17



# Trinity Peninsula - 18

