



19th Conference of the IHO Hydrographic Commission on Antarctica

National Report (New Zealand)

Agenda item 07.2Ao

HCA-19, Venice, Italy (hybrid), 16 – 18 April 2024

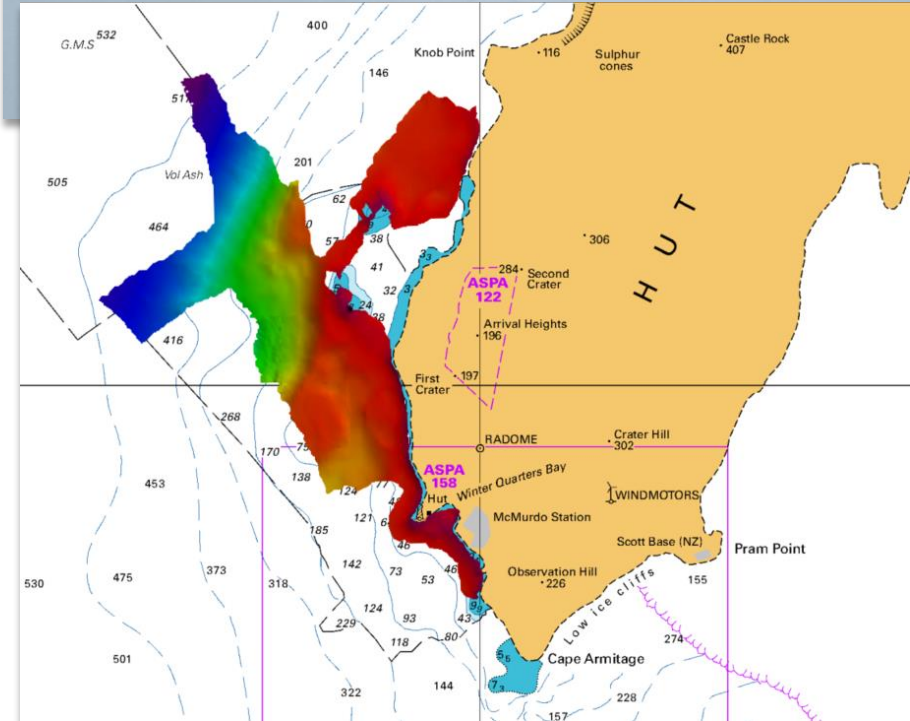


IHO

Surveys and charting progress in Antarctica since HCA-18 (May 2022)

International Hydrographic Organization

- Scott Base sea level gauge repaired, calibrated and operational
- USCG CGC Polar Star data received and charts INT 901 & 902 updated



HCA-19, Venice, Italy (hybrid), 16 – 18 April 2024

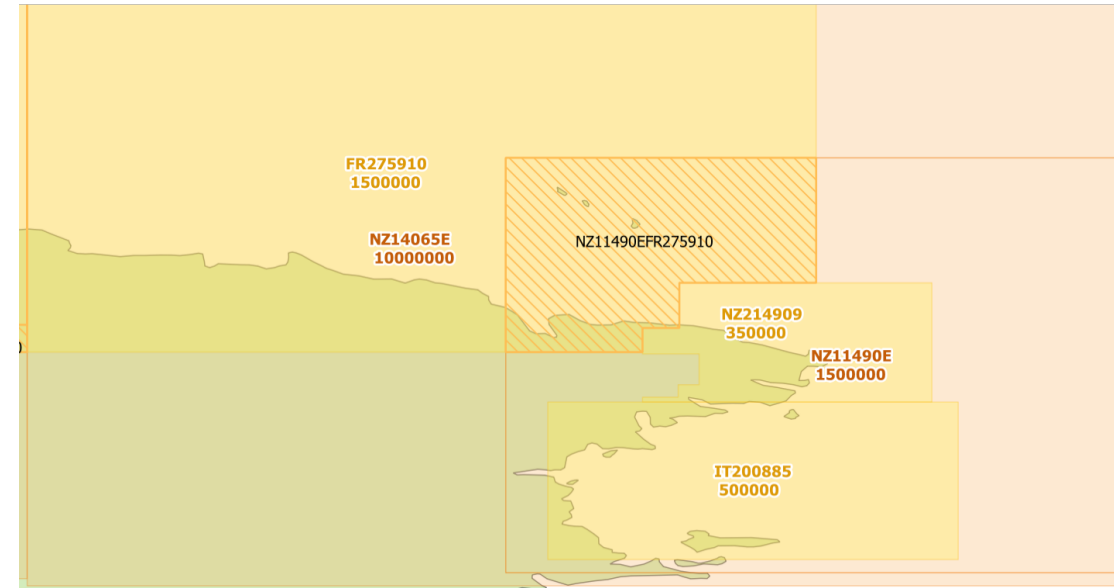


IHO

Surveys and charting progress in Antarctica since HCA-18 (May 2022)

International
Hydrographic
Organization

- Overlap between NZ11490E and FR275910
- Considered Low risk (IC-ENC)
- Overlap in place since 2017
- To be re-considered when NZ move to gridded ENC's in near future





IHO

Relations with Other Organizations

International
Hydrographic
Organization

- Support Antarctica New Zealand with deformation monitoring of windfarm and historic huts
- Three GNSS Antenna monuments were installed at Arrival Heights to support the [SouthPAN](#) Satellite Based Augmentation System programme



HCA-19, Venice, Italy (hybrid), 16 – 18 April 2024



IHO

Relations with Other Organizations

Data Centre for Digital Bathymetry Viewer



- Layers
- ▶ IHO DCDB/NOAA NCEI ?
 - ▶ EMODnet
 - ▶ Australia
 - ▶ Canada
 - ▶ Cape Verde
 - ▶ France
 - ▶ Germany
 - ▶ Japan
 - ▶ Netherlands
 - ▼ New Zealand
 - LINZ Bathymetric Data Index ?
 - LINZ Bathymetric Surface Model Index ?
 - ▶ Norway
 - ▶ Portugal
 - ▶ United Kingdom
 - ▶ Other Data Sources
 - ▶ Known Non-Public Data ?
 - ▶ Bathymetric Coverage Maps

This index enables you to identify freely available digital bathymetric surface models owned by [Land Information New Zealand \(LINZ\)](#), as well as models that contain third-party data. This data provides a 3-dimensional model of the surface of the seafloor. These surface models have been created by LINZ from publically funded single- or multi-beam data collected in the New Zealand coastal area since early 1998. The polygons in the index show the extent of these gridded data models, and include descriptive information, such as the age and quality of the data.

The gridded surface models are not downloadable from the LINZ Data Service, but can be provided to you on request.

Please refer to the [LINZ Bathymetric Index Data Dictionary](#) for further information about the attributes of this dataset, and formats in which the data is available.

For more information about the data layers displayed, please visit:

- [NZ Bathymetric Surface Model Index](#)
- [SW Pacific Bathymetric Surface Model Index](#)
- [Antarctic Bathymetric Surface Model Index](#)
- [NZ Bathymetric Surface Model Index \(Third-Party\)](#)

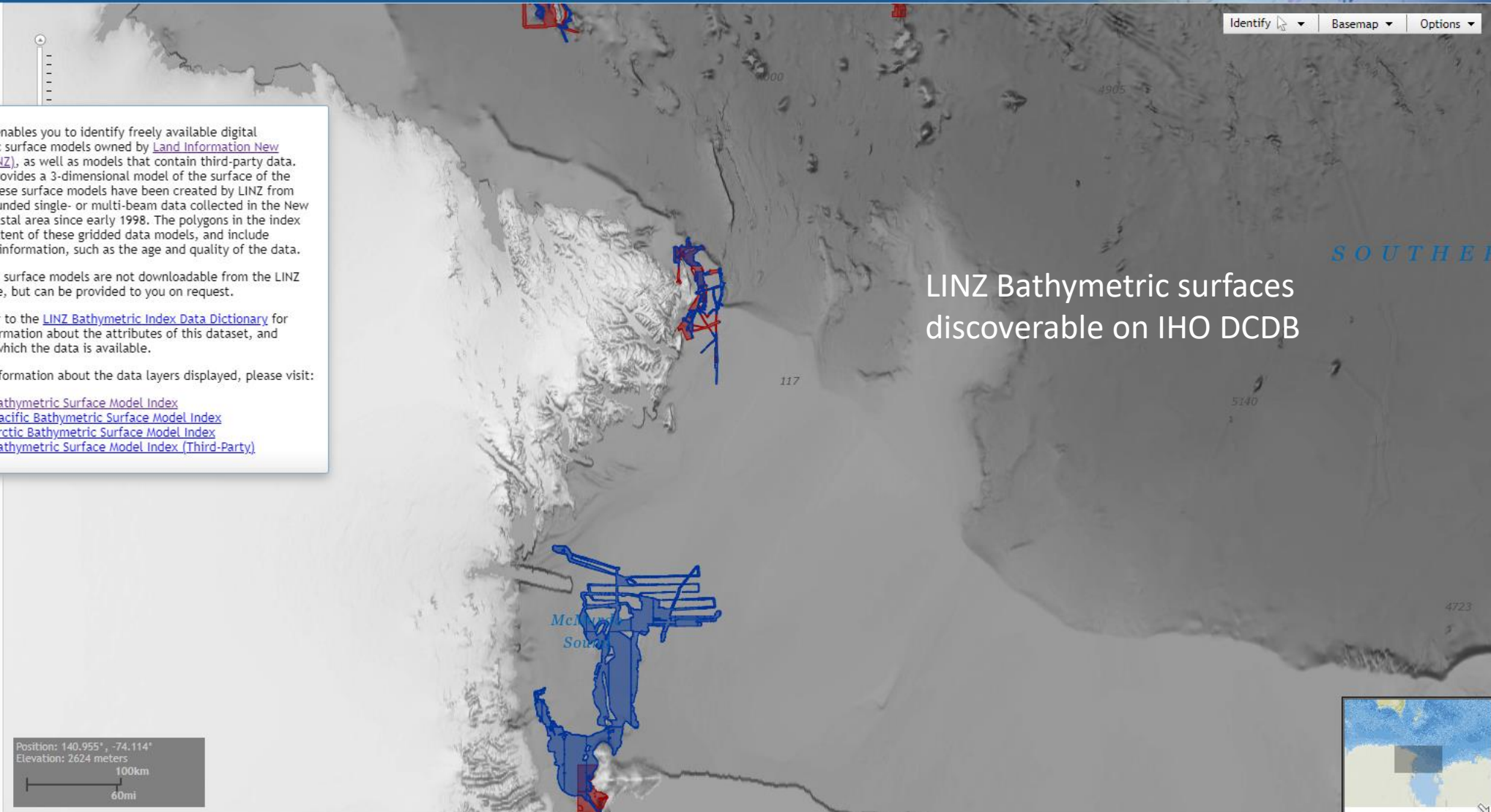
LINZ Bathymetric surfaces discoverable on IHO DCDB

- Grid Extract
- More Information
- Help

Position: 140.955°, -74.114°
 Elevation: 2624 meters
 100km
 60mi

Identify Basemap Options

- Mercator
- Arctic
- Antarctic



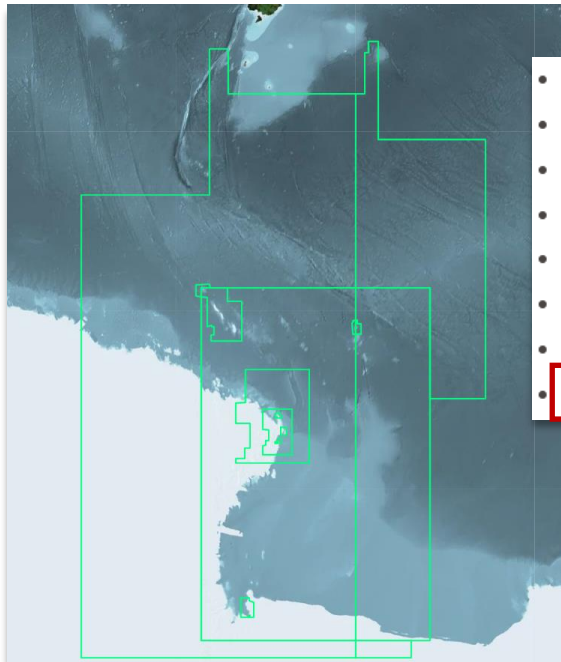


IHO

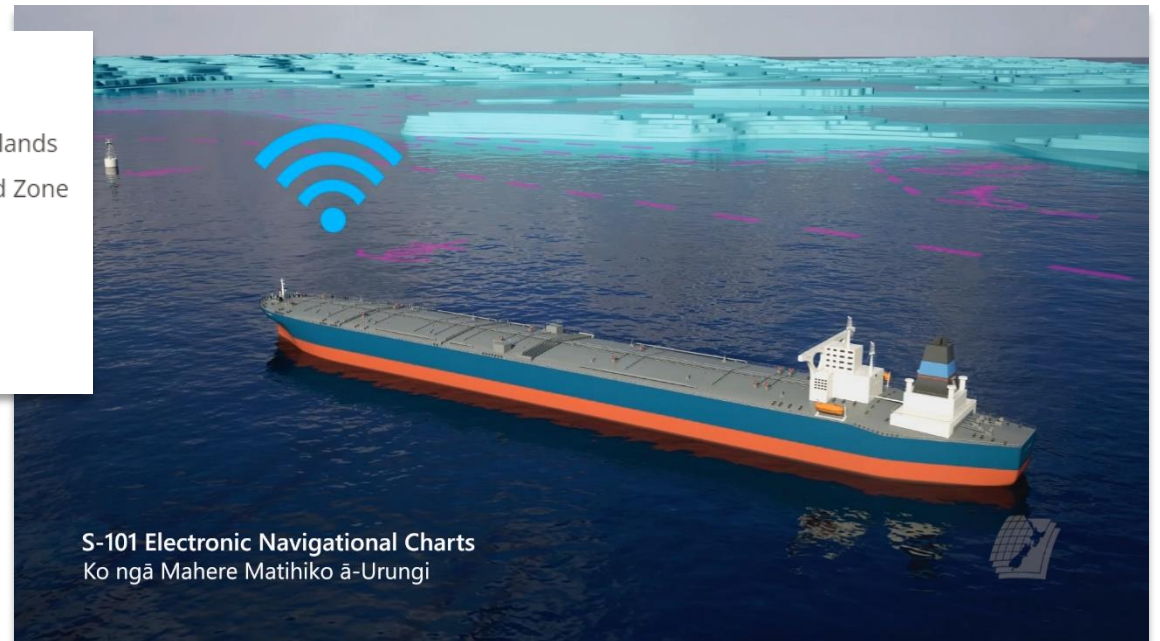
Planned Activities for 2024-2025

International
Hydrographic
Organization

- Continue engagement with Antarctica New Zealand on further survey requirements in support of Scott Base Redevelopment Project
- [Maritime Digital Transformation Project](#) – implementation of S-100



- NZ01 New Zealand - North Island
- NZ02 New Zealand - South Island
- NZ03 New Zealand - North Island - Bay of Islands
- NZ04 New Zealand - North Island - Auckland Zone
- NZ05 New Zealand - Cook Strait
- NZ06 New Zealand - Inland Waters
- NZ07 South West Pacific
- NZ08 Ross Dependency, Antarctica.



S-101 Electronic Navigational Charts
Ko ngā Mahere Matihiko ā-Urungi

HCA-19, Venice, Italy (hybrid), 16 – 18 April 2024



IHO

Recommendations, Action to be considered by HCA

International
Hydrographic
Organization

- **Note** the report
- **Take** any actions as necessary