



IHO

# HCA19 ICCWG Action 19/19

## Pourquoi Pas Island Scheme Proposal

International  
Hydrographic  
Organization

### Contents

1. HCA19 ICCWG background/summary slide
2. Summary of INT coverage
3. Approach Scale Proposals



IHO

# HCA19 ICCWG Action 19/19 Pourquoi Pas Island Scheme Proposal

International  
Hydrographic  
Organization

## 1. BACKGROUND

The adjacent slide represents the initial proposal made by the Region M coordinator at HCA 19.

HCA 19 agreed approach scale coverage of MSR Av at 1:50,000.

The following slides explore the suitability of the proposal with final recommendation for the ICCWG to approve.



## HCA Region M Scheme Progress

### New Requirements

#### Pourquoi Pas Island Approach Scale

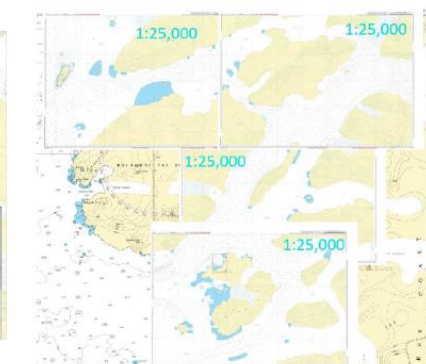
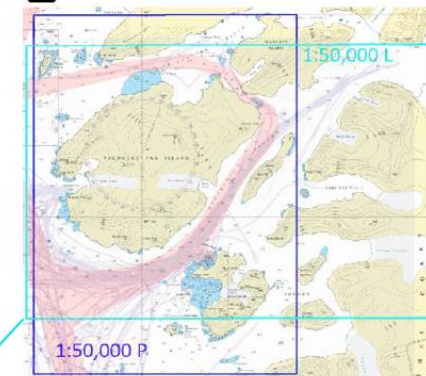
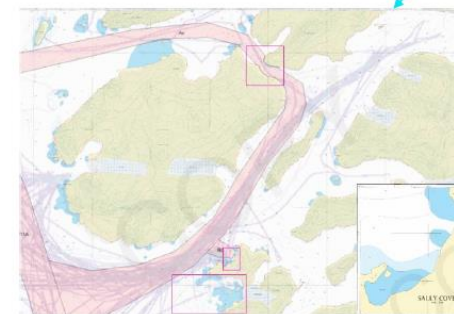
- MSR Av
- HSM Sally Cove/IATTO

#### HCA 19 recommendation

- Explore opportunity for approach scale product to provide improved coverage of MSR Av and The Narrows
- Consider existing approach scale scheme requirements

#### HCA 19 Decision:

1. 1:50,000 scale (UB4) coverage agreed
2. UK to consider:
  1. Co-location of Sally Cove
  2. Coverage of Horseshoe Island
3. TR to supply Lystad Bay chart
4. See action HCA19 ICCWG 19/19



HCA-19, Venice, Italy (hybrid), 15-18 April 2024

HCA-19, ICCWG 19/19



IHO

# HCA19 ICCWG Action 19/19

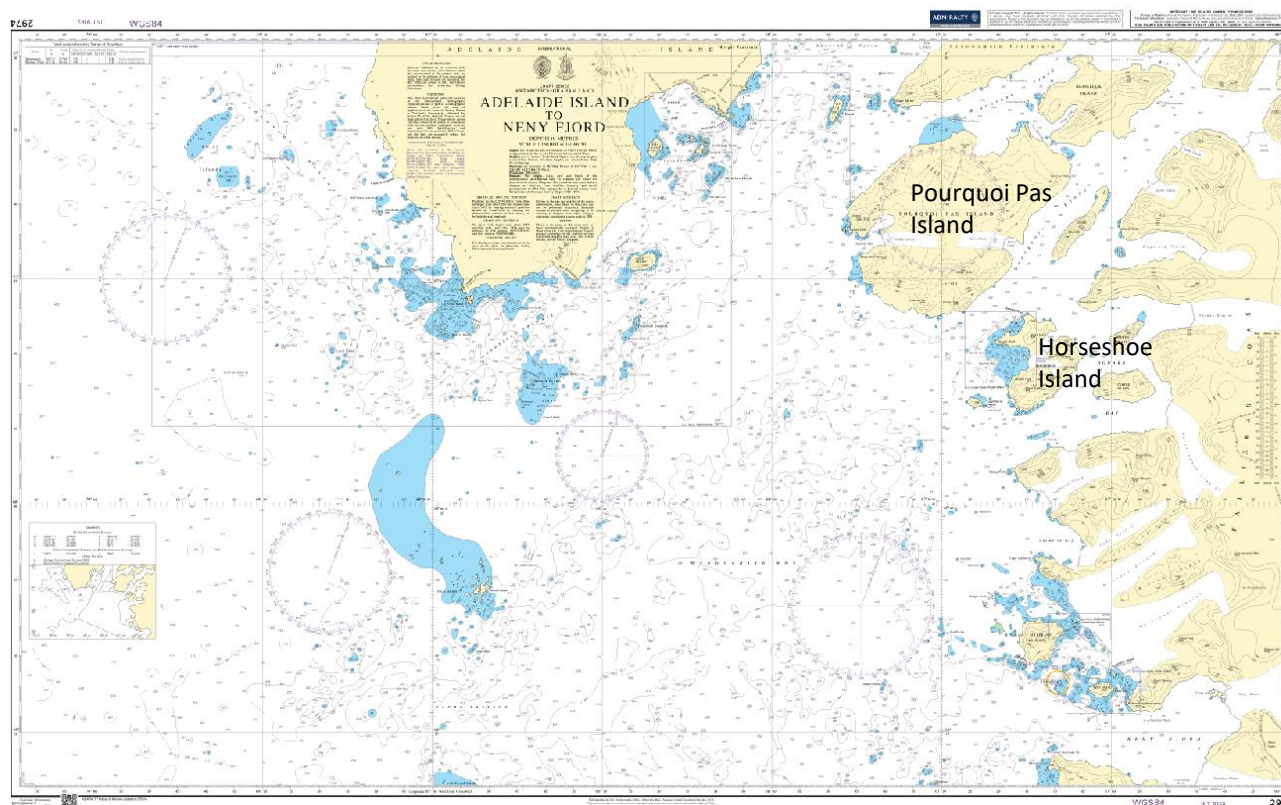
## Pourquoi Pas Island Scheme Proposal

International  
Hydrographic  
Organization

### 2. SUMMARY OF EXISTING AND SCHEMED INT COVERAGE

INT 9163 – 1:150,000 (published GB)

INT 9164 – 1:150,000 (schemed CL)



A screenshot of a digital chart viewer interface. The interface displays two metadata panels for International Notice to Mariners (INT) charts. The top panel is for INT 9163, and the bottom panel is for INT 9164. Both panels show details such as Nation Title, Nation Chart No, Inclusion Year, First Edition Year, New Edition Year, Producers, Chart Date Year, Printer Nation, Print Chart No, Print format, Frame Dimensions, Scale, INT Area, Producing Status, Record Update Date, and Region Version. The INT 9163 panel shows details for Adelaide Island to Neny Fjord, produced by GB in 2012. The INT 9164 panel shows details for Margarita Bay, produced by CL in 2014. The interface also shows a map of the region with a yellow box highlighting the area covered by the charts. A small inset window shows a list of charts: CHART 907, CHART 9163, CHART 9164, and CHART 9172.

INT	Nation Title	Nation Chart No	Inclusion Year	First Edition Year	New Edition Year	Producers	Chart Date Year	Printer Nation	Print Chart No	Print format	Frame Dimensions	Scale	INT Area	Producing Status	Record Update Date	Region Version
INT 9163	Adelaide Island to Neny Fjord	2974	2012			GB						150,000	M	Produced		4.0.5 APR. 2024
INT 9164	Margarita Bay	16400	2014			CL					649.8 x 1100.0 mm	150,000	M	Schemed		4.0.5 APR. 2024



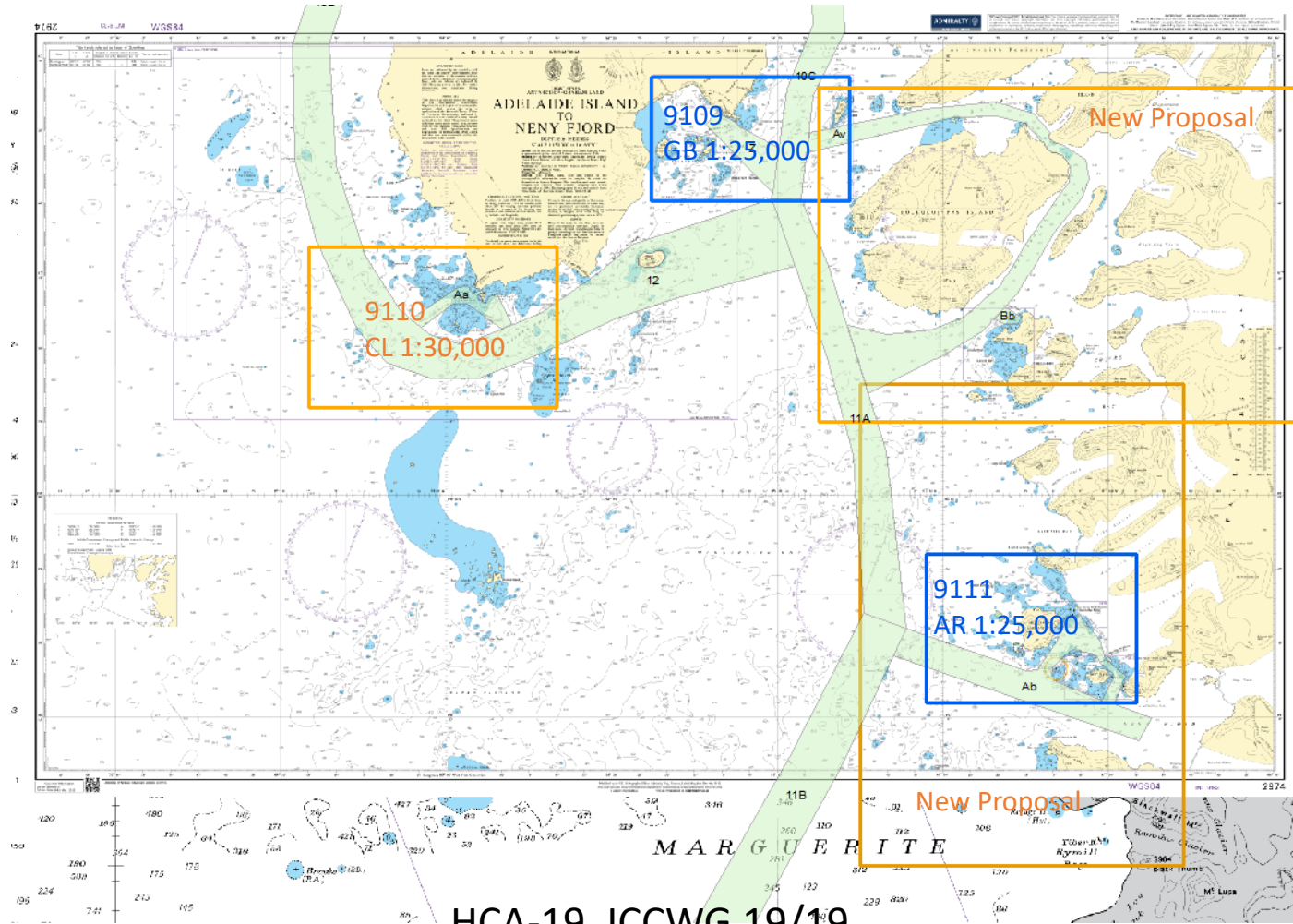
IHO

# HCA19 ICCWG Action 19/19

## Pourquoi Pas Island Scheme Proposal

International  
Hydrographic  
Organization

### 2. SUMMARY OF EXISTING AND SCHEMED INT COVERAGE



HCA-19, ICCWG 19/19

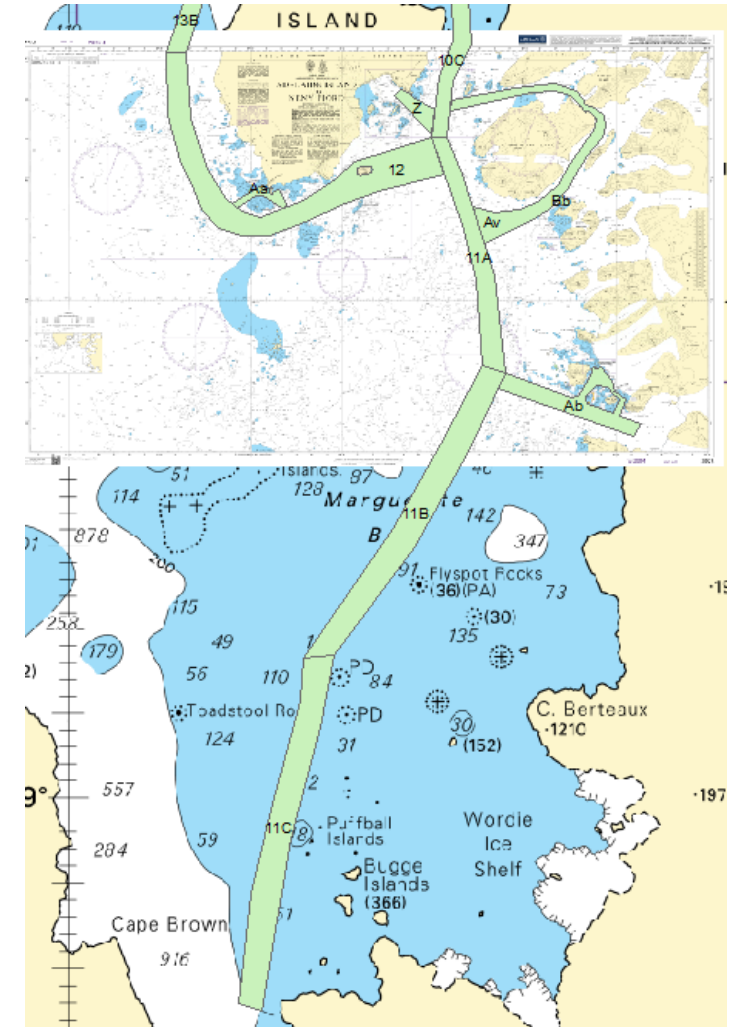
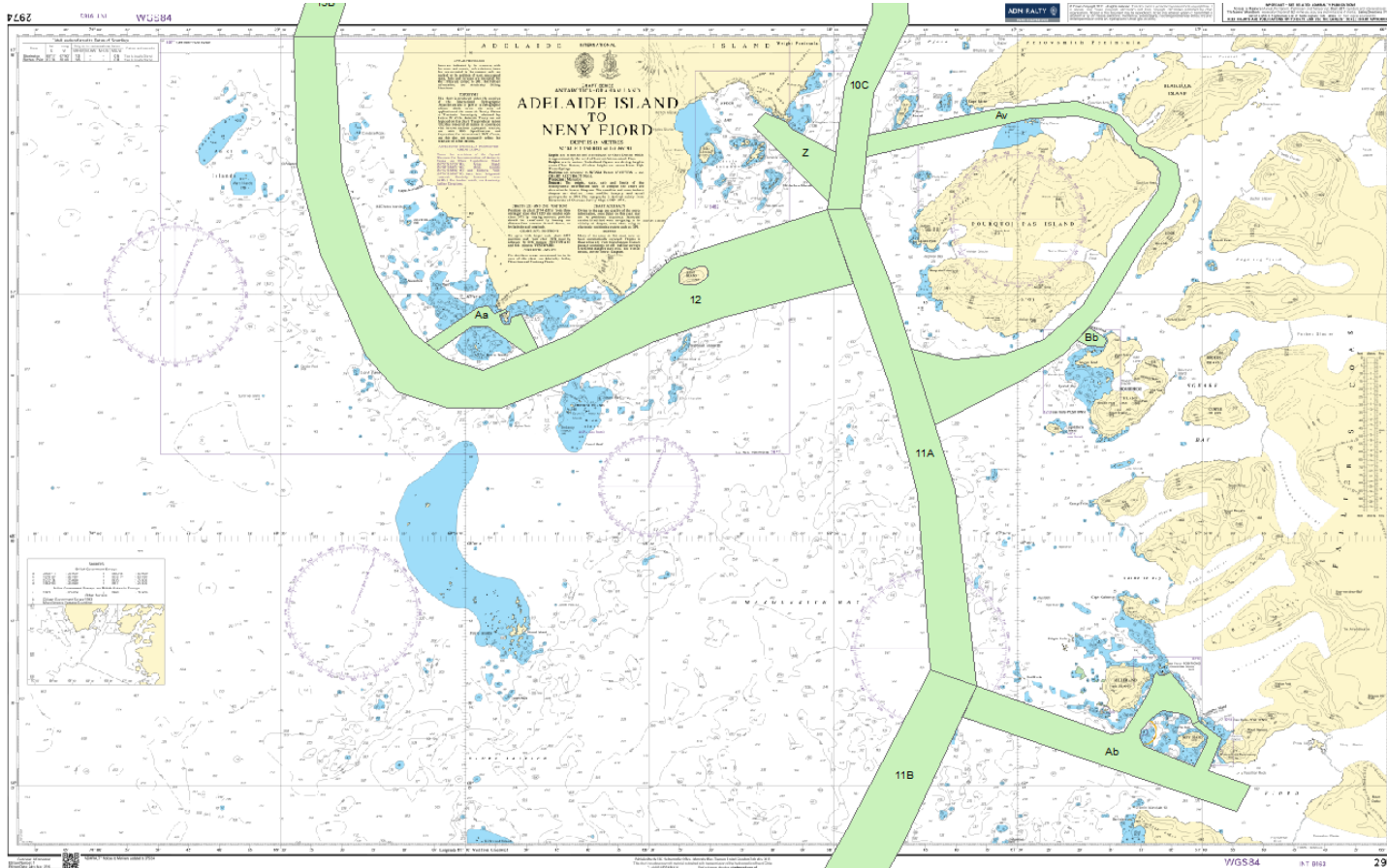


IHO

# HCA19 ICCWG Action 19/19 Pourquoi Pas Island Scheme Proposal

International  
Hydrographic  
Organization

## 2. SUMMARY OF EXISTING AND SCHEMED INT COVERAGE Maritime Shipping Routes





IHO

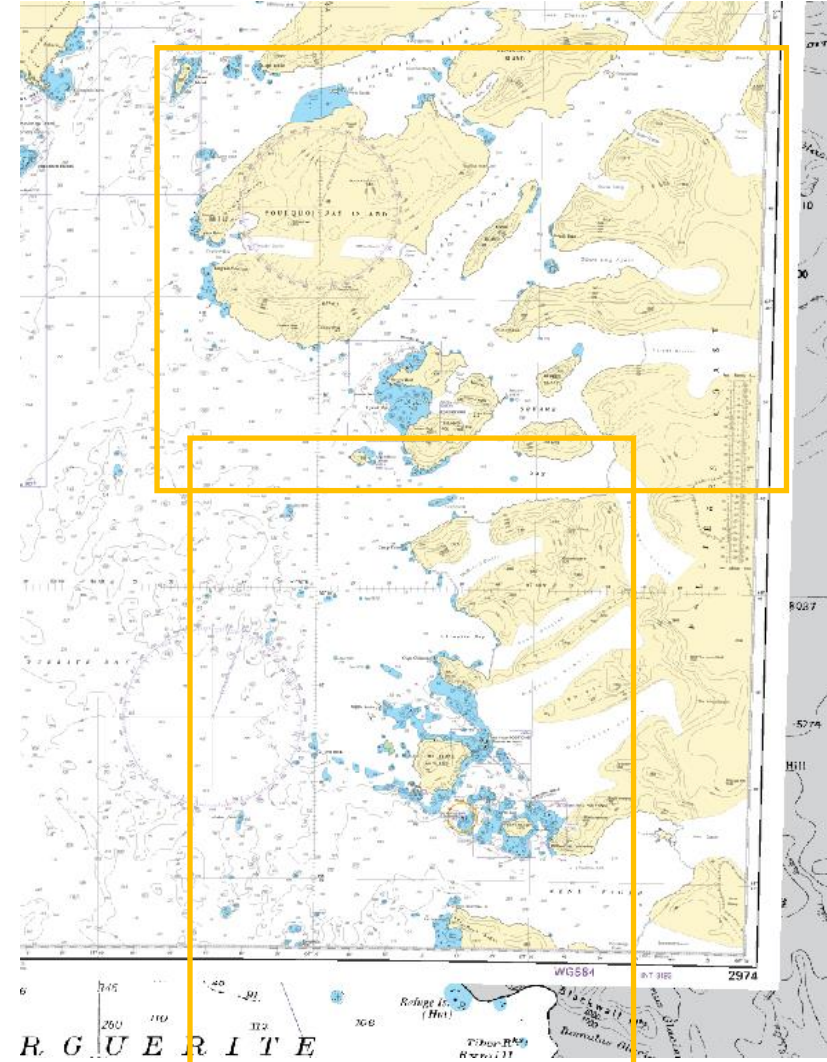
# HCA19 ICCWG Action 19/19

## Pourquoi Pas Island Scheme Proposal

International  
Hydrographic  
Organization

### 3. Chart Proposal

- a) The proposal provides enhanced coverage of Peninsula Shipping Routes Av, Bb, 11a, 11b and Bb
- b) Coverage also covers numerous fjords and glacier fronts on Fallières Coast (67 54S, 66 40W) between Perutz Glacier 67 35S, 66 34W) and Romulus Glacier/Rymill Bay (68 23S, 66 58W)
- c) Larger scale approach and harbour scale coverage is provided of Sally Cove (67 48S 67 16W) and The Narrows (67 35S 67 12W) as inset plans
- d) The scheme has potential for further inset plans to be added if required
- e) The new charts provide and accurate WGS base for future new surveys
- f) The proposal includes equivalent scale ENC coverage





IHO

# HCA19 ICCWG Action 19/19 Pourquoi Pas Island Scheme Proposal

International Hydrographic Organization

## 3. Chart Proposal

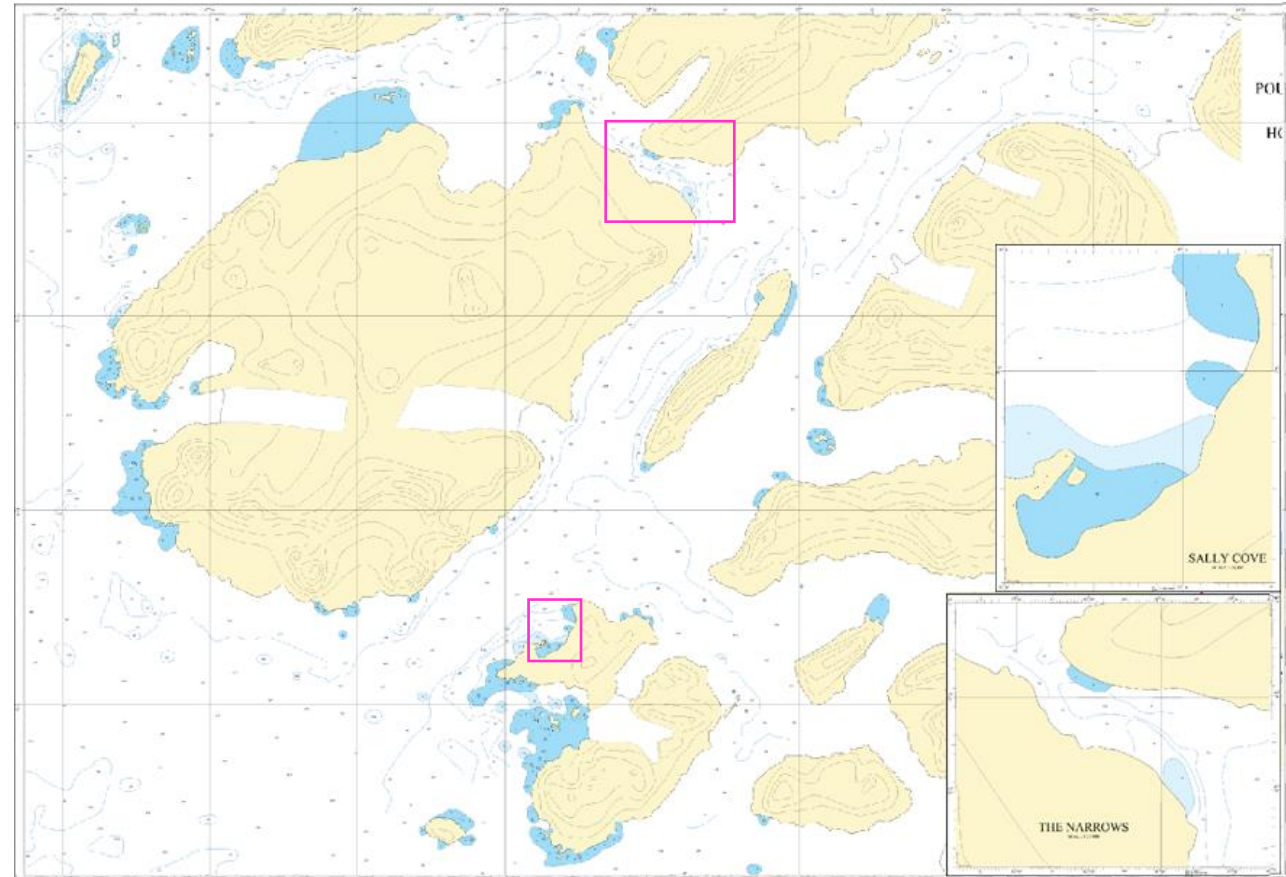
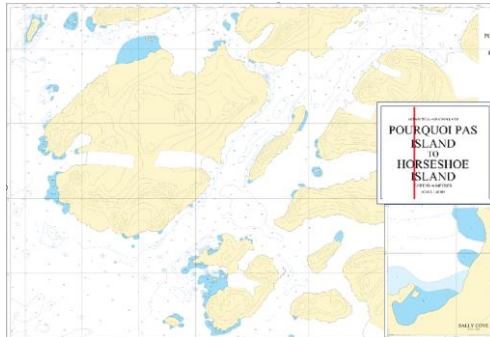
a) INT 9168 Fallières Coast – Approaches to Pourquoi Pas Island & Horseshoe Island

a) Scale

- i. Main Panel 1:55,000
- ii. The Narrows 1:25,000\*
- iii. Sally Cove 1:10,000

Scale 1: 55000	Limits		
	North	67 32.0000 S	
	West	N-S Size (mm) 771.02	East 066 26.0000 W
	South	67 55.0000 S	
		E-W Size (mm) 1100.17	

\* Coverage of 'The Narrows' may only be available as ENC due to coverage limitations dictated by paper size



HCA-19, ICCWG 19/19



IHO

# HCA19 ICCWG Action 19/19 Pourquoi Pas Island Scheme Proposal

International  
Hydrographic  
Organization

## 3. Chart Proposal

a) INT 9169 Fallières Coast – Lagotellerie Island to Rymill Bay

a) Scale

i. Main Panel 1:55,000

Scale 1: <input type="text" value="55000"/>	Limits	
	North	<input type="text" value="67 53.0000 S"/>
	West	<input type="text" value="067 43.0000 W"/>
	East	<input type="text" value="066 43.0000 W"/>
	N-S Size (mm)	<input type="text" value="1127.15"/>
	E-W Size (mm)	<input type="text" value="763.13"/>
	South	<input type="text" value="68 26.0000 S"/>

