



4, Quai Antoine 1er
B.P.445 - MC 98011 MONACO Cedex
PRINCIPAUTE DE MONACO

IHB Files Nos. S3/0128, S3/4230/M

16 June 2005

HCA Letter No. 2/2005

To: Members of the IHO Hydrographic Committee on Antarctica (HCA) ¹

Subject: INT Chart Scheme for Region 'M' (Antarctica) – Chart INT 9125

Dear Sir or Madam,

The tables below providing information on the current status of Chart INT 9125 in Region 'M' have been taken from the current Chapter M (Antarctica) of M-11:

INT No.	Producer	National No.	Date		Scale		Format	Printer
			Publication	N. Edit.	1:	Latitude		
9125	BR & PE				40 000			
Plans: A – Ensenada Martel 1:20 000; B – Estação Arctowski 1:10 000; C – Ensenada Mackellar 1:10 000								

and its supplement:

No. INT	Title/Plan Title	CHART LIMITS				Printer
		Latitude		Longitude		
		South	North	West	East	
9125	Baía do Almirantado	62°18.0'S	62°02.0'S	58°40.0'W	58°12.0'W	
	Plan A – Ensenada Martel	62°07.62'S	62°03.58'S	58°24.98'W	58°16.90'W	
	Plan B – Estação Arctowski	62°10.33'S	62°08.45'S	58°30.25'W	58°26.20'W	
	Plan C – Ensenada Mackellar	62°06.00'S	62°05.00'S	58°29.00'W	58°26.70'W	

As can be seen from the first table Chart INT 9125, to be jointly produced by Brazil and Peru, will include three plans, of which one will cover "Ensenada Mackellar".

The IHB has received a copy of Chart H-7113 "Ensenada Mackellar" published in May 2004 by the Direccion de Hidrografia y Navegacion of Peru. This chart at scale 1:15 000, based on recent surveys (2003), provides useful information on the approaches to Ensenada Mackellar. Following same order as above, its limits are: 62°07.25'S; 62°03.25'S; 58°30.15'W; and 58°24.15'W. A copy is attached.

Chart H-7113 has been carefully examined at the IHB, as INT Co-ordinator for Region 'M', and we have thought it could advantageously replace the initial plan at 1:10 000 on INT 9125, due to its broader geographical coverage around Ensenada Mackellar. Consulted on the matter, Peru (Radm

¹ This letter is sent by e-mail only. However, paper copies will be mailed on request to the IHB (info@ihb.mc)

Oleg KRILJENKO, Director of DHN), have indicated that they fully support the proposed change and have asked the IHB to seek HCA MS' approval for this replacement.

In effect, any change to the Scheme has to be agreed by HCA Members, who are therefore requested, in particular Brazil as co-producer, to report **by 15 August 2005** on any objection they would have regarding the replacement, on INT 9125, of the initial plan on Ensenada Mackellar at 1:10 000, by a plan at 1:15 000 reflecting Chart H-7113. No response from you will be interpreted as an approval of the proposed change.

Brazil and Peru are further invited to report on any progress in this cooperative effort and to indicate when the publication of INT 9125 can be expected.

On another matter, referring to HCA Letter 1/2005 forwarding a provisional agenda for the 5th HCA Meeting (Christchurch, New Zealand), you are kindly reminded that any comments on this draft should reach the Bureau **before 30 June 2005**.

Thank you for your attention.

On behalf of the Directing Committee
Yours sincerely



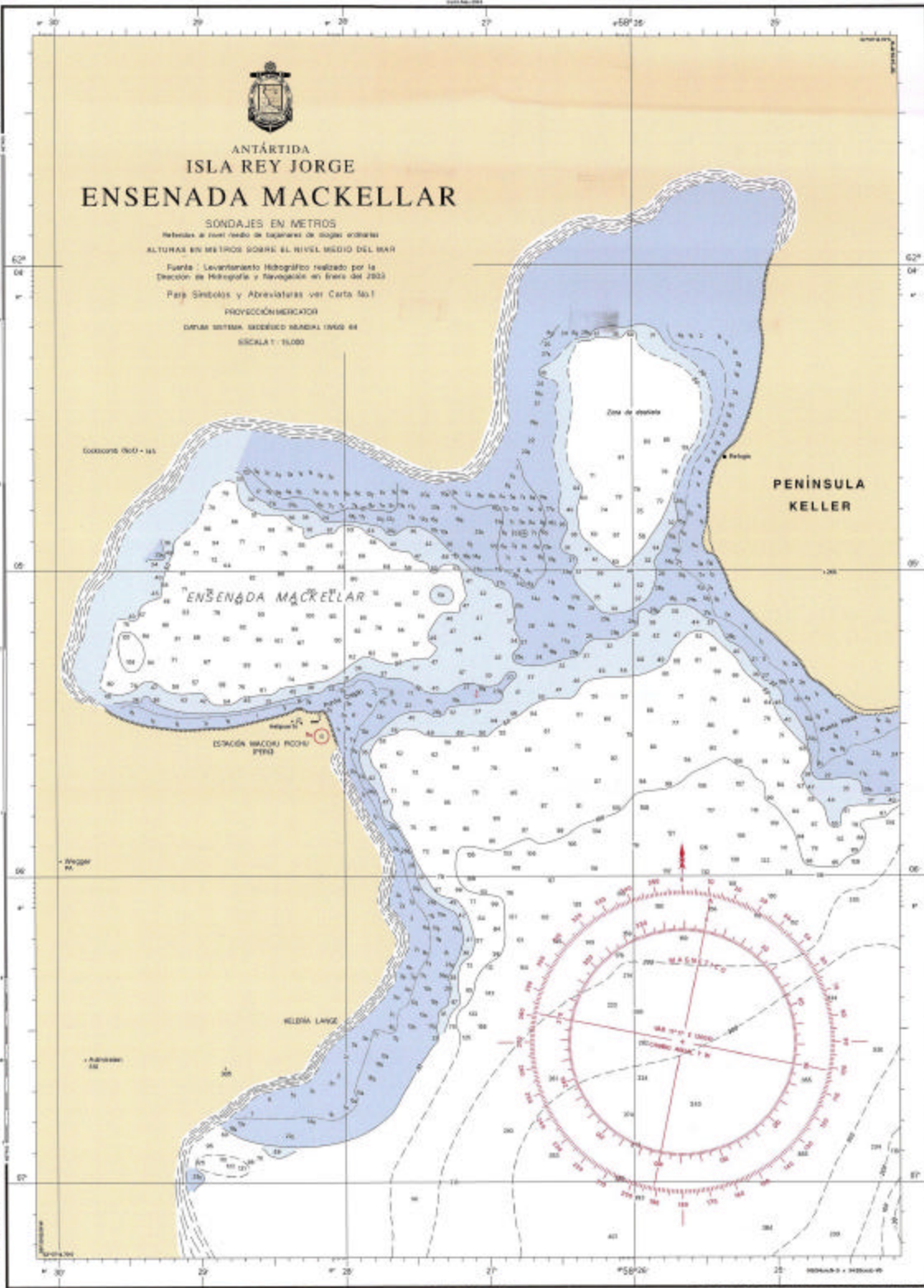
Captain Hugo M. GORZIGLIA
IHB Director and Chairman of HCA

Enclosure: Peruvian Chart H-7113
Copy for information to: HCA Observers

SONDAJES EN METROS

PERU HIDRONAV 7113

PERU HIDRONAV 7113




 ANTÁRTIDA
ISLA REY JORGE
ENSENADA MACKELLAR
 SONDAJES EN METROS
 Referidas al nivel medio de las mareas de aguas serenas
 ALTURAS EN METROS SOBRE EL NIVEL MEDIO DEL MAR
 Fuente: Levantamiento Hidrográfico realizado por la
 Dirección de Hidrografía y Navegación en febrero del 2003
 Para Símbolos y Abreviaturas ver Carta No.1
 PROYECCIÓN MERCATOR
 DATUM METRICA, ESCALA DEBIDA 1:5000 00
 ESCALA: 1:5000

PERU HIDRONAV 7113

PERU HIDRONAV 7113

SONDAJES EN METROS

PLAN 101 7125

1	2	3	4

Hoja 1 de 1
 DIRECCIÓN DE HIDROGRAFÍA Y NAVEGACIÓN
 CALLAO - PERÚ

