

IENWG 12

Thierry Schmitt (SHOM)
Dick Schaap (MARIS)
On behalf of the EMODnet Bathy consortium

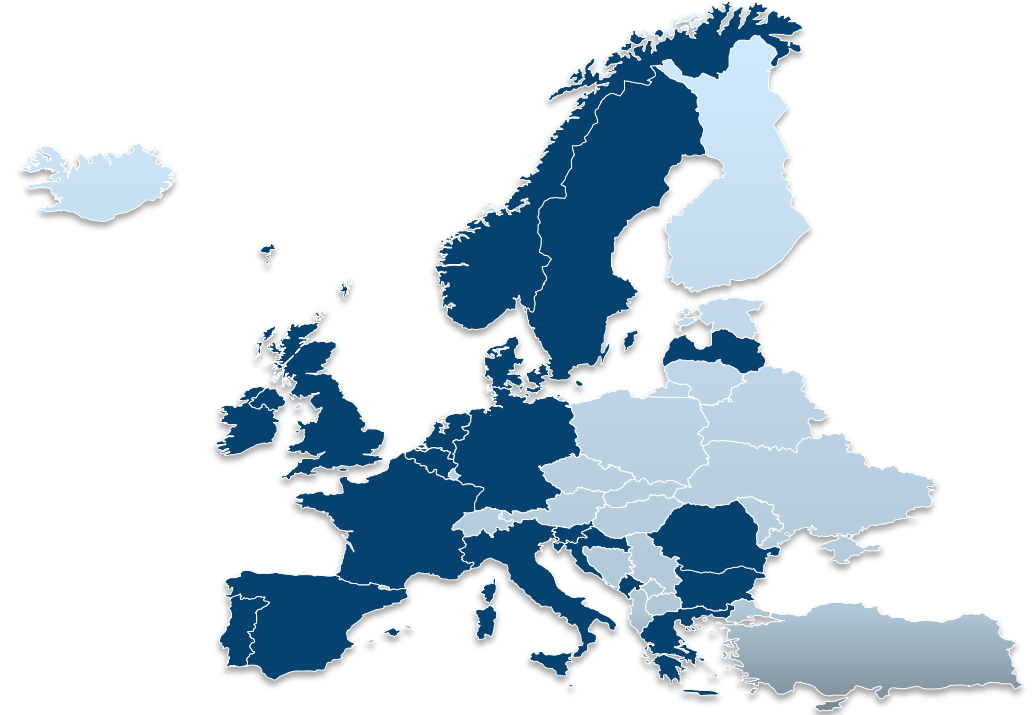
<http://emodnet-bathymetry.eu/>

Members of the consortium

➤ Hydrographic Offices



➤ Research Institutes



➤ Small and medium-sized enterprises



CDI and CPRD catalogues

WHAT?
Data set name: vakloding NH-SK
Discipline: Marine geology, Terrestrial
Parameter groups: Gravity, magnetics and bathymetry, Terrestrial
Discovery parameters: Bathymetry and Elevation
GEMET-INSPIRE themes: Oceanographic geographical features
Abstract: Bathymetric data extract from bathymetric database
Data format: XYZ ASCII **Version 1.0**
Data size: 0.1
Data set creation date: 20140613

WHERE?
Map



GML id

GML objects

Datum

Measuring area type

Water depth (m)

Depth reference

Minimum instrument depth (m)

Maximum instrument depth (m)

Sea regions

ms01

Name	Description
RA16522_6132	coverage

World Geodetic System 84

surface

-9999

Normaal Amsterdams Peil

-9999

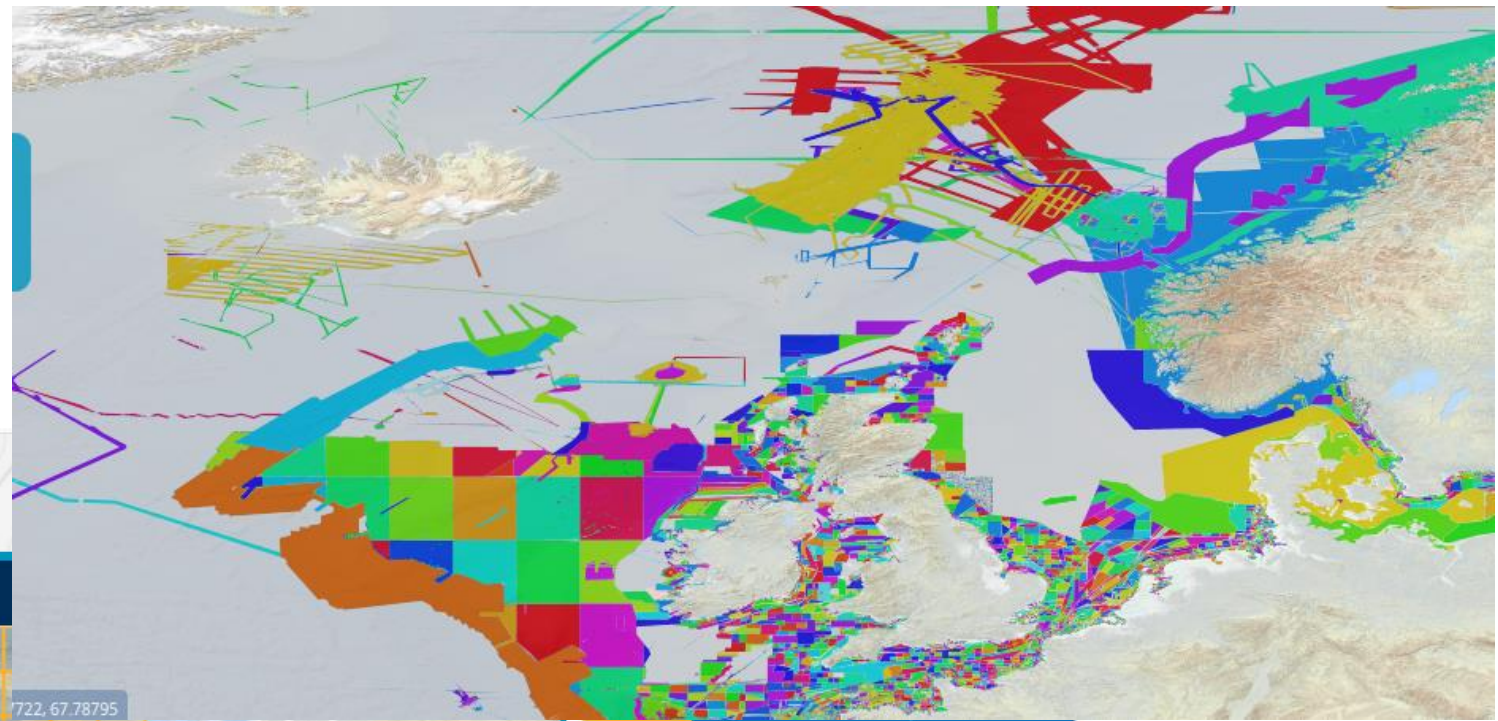
-9999


North Sea

- Circa 30.000 surveys entries (CDI – leadline, singlebeam, multibeam, Lidar)
- Circa 200 Composite DTM (CPRD – eg MAREANO, Israel NBS, IBCAO, Satellite Derived Bathymetry, ...)
- Associated Metadata (INSPIRE compatible, ISO 19115- based upon an unified and agreed thesaurus – BODC held)
- Source data held by the data provider, who decide how to provide its dataset to the final user

EMODnet Bathymetry DTM

- 1/16 arc-minute (approx. 100m)
- Built from data from partners (HO, Oceanographic centers, private partners)
- DOI, free of charge, free to use
- Available at MSL and LAT



 **BATHYMETRY**
Understanding the topography of the European seas
Bathymetry Viewing and Download service

Mean depth full coverage Legend Retrieve depth Depth profile

0.20640, -4.94272

5000 km

Feedback

722, 67.78795

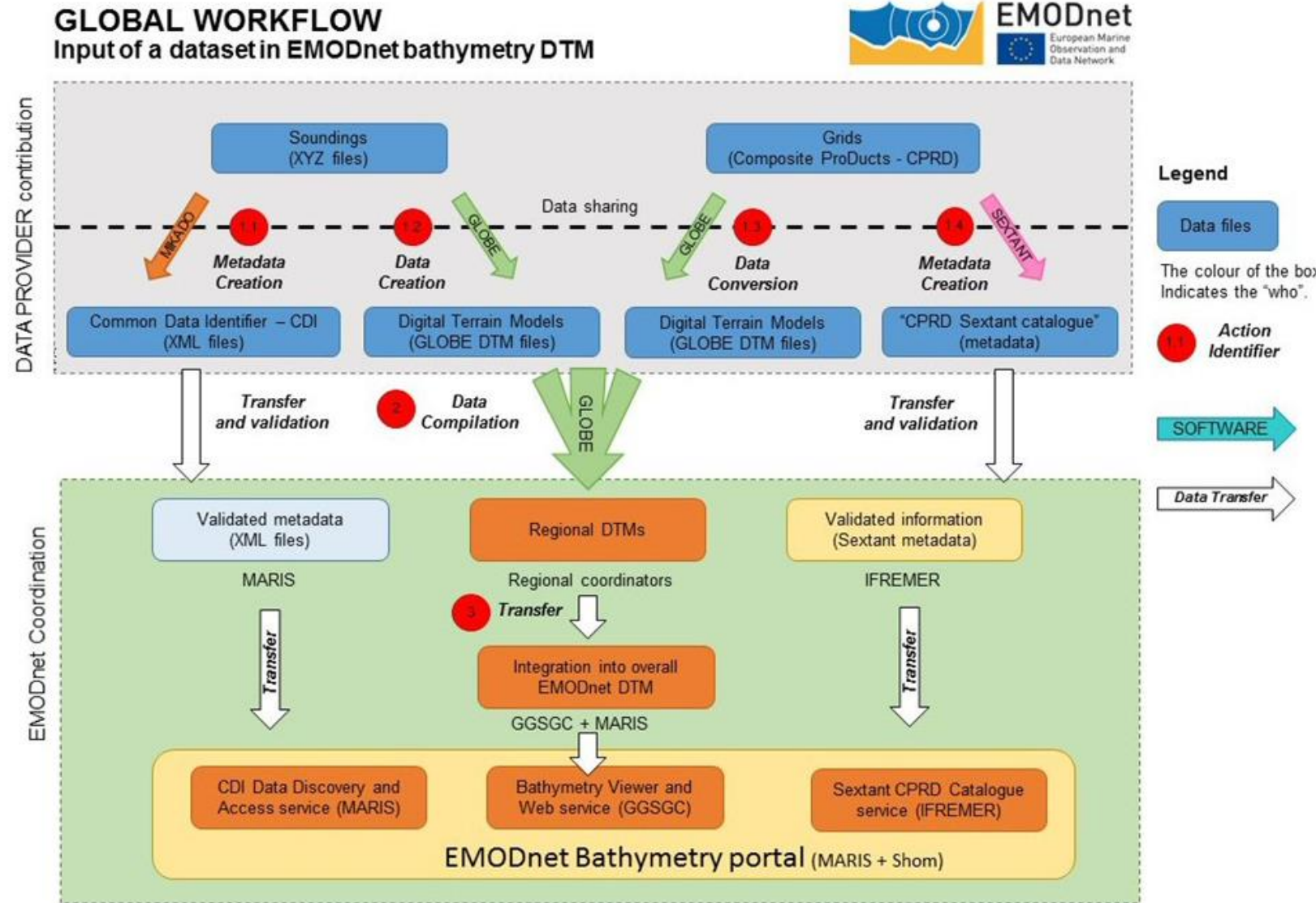
DTM version

2016 2018 2020

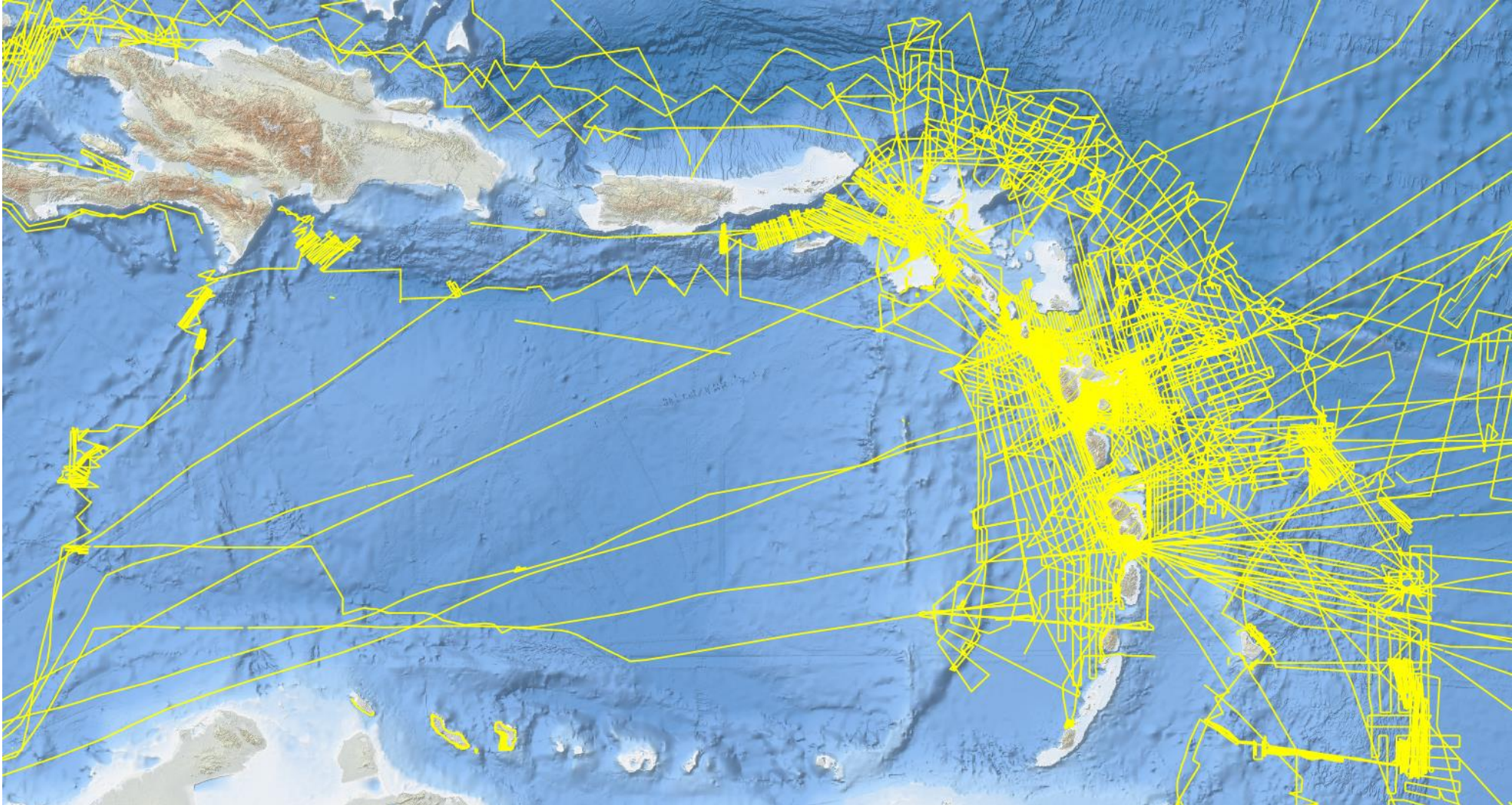
Select your area(s) on the map

Status update (2020 – 2022)

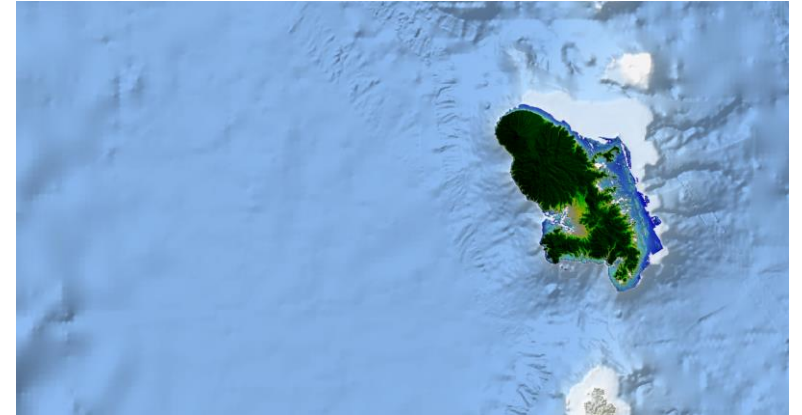
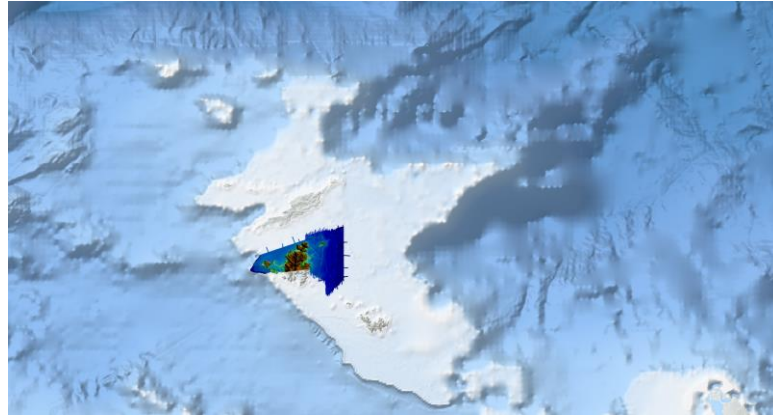
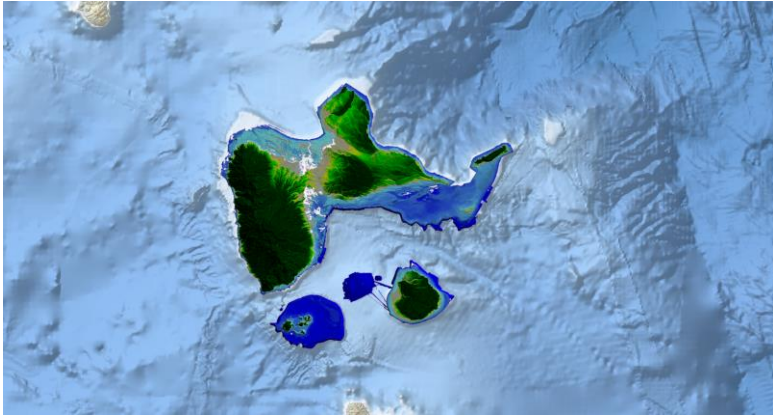
- Update of CDI and CPRD catalogues (12/21)
- Including additional SDB data products (12/21)
- Data providers will update their contributions to the EMODnet DTM (01/22)
- Basin coordinators will carefully compile each of the 12 Basin sub-DTMs (06/22)
- Release of the full EMODnet Bathymetry DTM 2022 product and associated services (12/22)
- Final reporting towards the end of the contract.
- Note: current effort towards a unique multi-thematic EMODnet portal



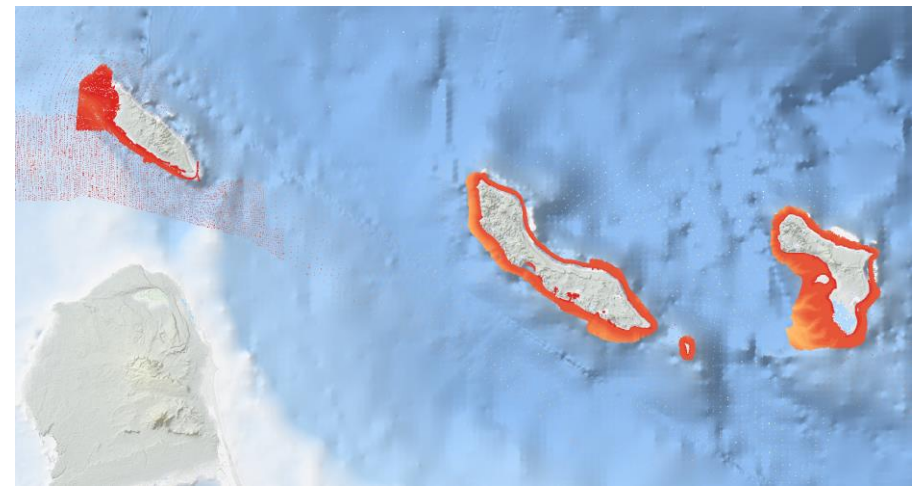
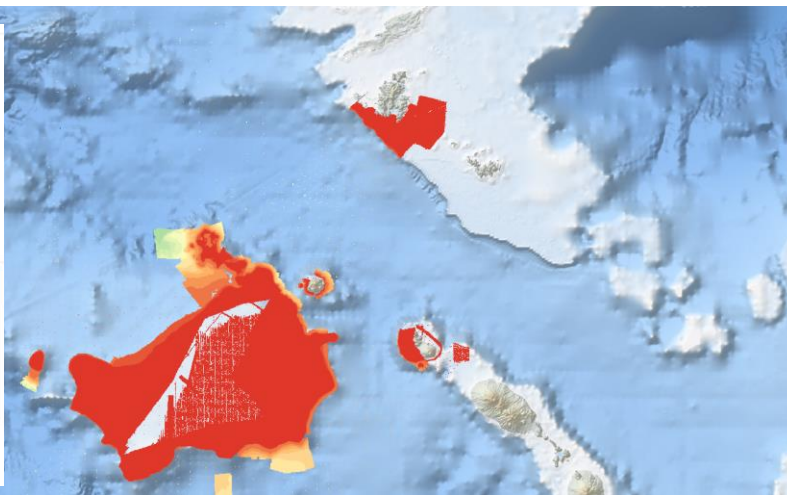
New area Caribbean islands



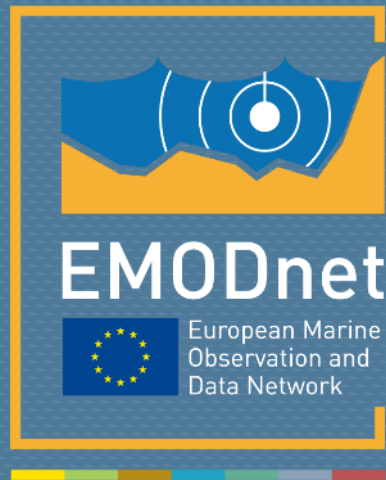
Known other specific sources



A screenshot of the EMODnet Bathymetry website. The page title is "BATHYMETRY" with the tagline "Understanding the topography of the European seas". The navigation menu includes "APPROACH", "METADATA & DATA", "DATA PRODUCTS", "NEWS", "PROMOTION", "PARTNERS", and "HELPPESK". Below the navigation is a "Sextant Catalogue service" section. A search bar contains the word "caribbean". The search results show two items: "574_EMODNET REGIONAL DTM OF KINGDOM OF THE NETHERLANDS, NORTHERN CARIBBEAN PART, version 2021" and "574_EMODNET REGIONAL DTM OF KINGDOM OF THE NETHERLANDS, SOUTHERN CARIBBEAN PART, version 2021". Each result includes a small thumbnail map and a brief description of the data source.



Partner EOMAP to provide SDB for NL, UK islands, and a potential other area to be discussed



@EMODnet
www.emodnet.eu

Your gateway to marine data in Europe

