

The Joint IHO-Singapore Innovation and Technology Laboratory

Maritime and Port Authority of Singapore
IHO MSDI WG Online Meeting
17 – 18 March 2021

IHO Innovation and Technology Lab: Objectives

FACILITATE

- the conduct of innovative or investigative projects proposed by IHO Member State(s), IHO organs, or other stakeholders. (including test bedding)

ENABLE

- knowledge creation and foster collaboration to evaluate specifications of global standard setting within the scope of IHO standardization activities

FOSTER

- a multidisciplinary and collaborative environment for technical experts to interact learn and promote new solutions and technologies, including collaboration and cooperation with other international organizations research and development bodies active in the maritime domain under the guidance of a Governing Board

The Joint IHO-Singapore Innovation and Technology Laboratory

- November 2020: Approved by the IHO Council 4 and endorsed by the IHO Assembly 2.
- October 2021: Planned to be officially launched at the Joint IHO-UN-GGIM Seminar back-to-back with the IHO MSDIWG12 and Third Expert Meeting of the UN-GGIM MGI WG, Singapore.
- Pilot studies could kickstart before October 2021.
- Singapore's in-kind contributions: Work Space + Manpower Costs





Projects



Data



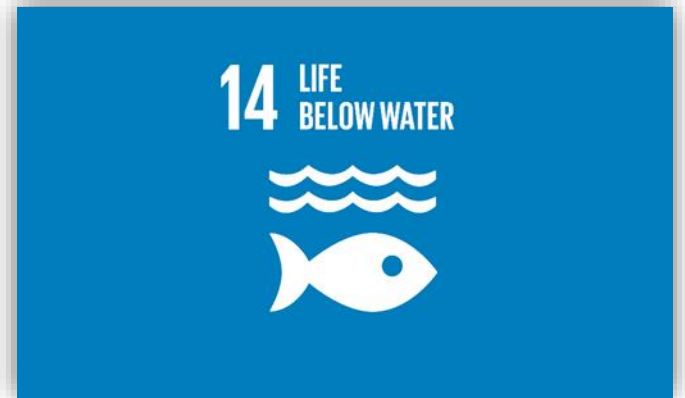
Procedure

MSDI-related Projects

- Submit proposals for projects:
 - IHO Member State user needs
 - Future trends affecting MSDI
 - Monitor and support UN SDG 14
- Collaborate with other organisations (UN-GGIM MGI WG, OGC)
- *Other IHO Lab Projects: S-100, Smart ENC, Autonomous Shipping*

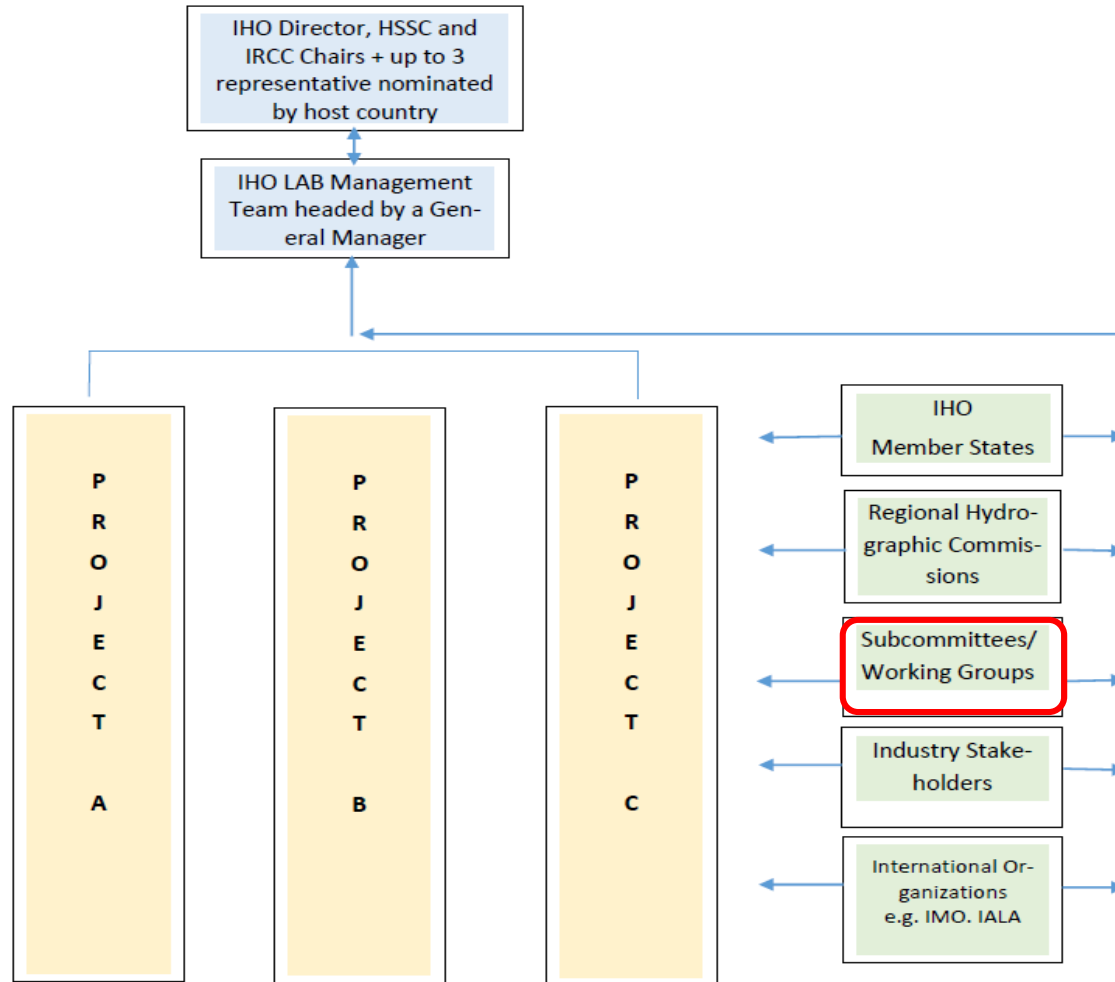
MSDI as source for (authoritative) data

- Provide data for R&D (regional and/or national MSDIs)
- Explore and share data partnership policies and exchange mechanisms for R&D.



Procedure

- IHO MSDI WG can participate in the work of the IHO Innovation & Technology Lab:
 - As a Working Group
 - As Member State
 - As Industry Stakeholders
 - As Regional Hydrographic Commission



Moving Forward

- The Joint IHO-Singapore Innovation and Technology Lab as an avenue to realise the benefits of regional and national MSDIs through R&D projects.
- IHO MSDI WG is invited to participate in the work of the Joint IHO-Singapore Innovation and Technology Lab.



M P A
S I N G A P O R E



MARITIME
S I N G A P O R E