



UK Hydrographic
Office

Our ADMIRALTY Marine Data Portal

Presented to IHO MSDIWG 13 by
Helen Phillips
May 2022

The UKHO Marine Data Portal

- › Replaced the INSPIRE Portal in December 2018 as the place to search and download data sets regarding maritime limits and boundaries, ships' routing measures and bathymetry.
- › It presents us with not only a capability to serve data under our current obligations but provides a platform for future data provision and value-added services.
- › It creates a 'one-stop shop' portal for our data and services.

What is the Marine Data Portal?

The Marine Data Portal Vision:

- › To give people easy and timely access to marine location-based information from seabed to surface to help them with sustainable marine decision making.
- › An organised gateway to our non-navigation data and services.



The Marine Data Portal Guiding Principles

- › The Portal should enable partners to access data
- › Maximise the potential of the software without compromising vendor neutrality of the concept
- › Build momentum by adding data to the portal regularly
- › The Portal should offer an exemplary User Experience



Web Site



Tidal
Prediction
Service

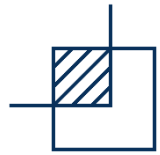


Seabed
Mapping
Service

Data Download



Standard
Data
Service



Maritime
Limits



Wrecks



VORF

GeoSpatial Web Service

AVCS

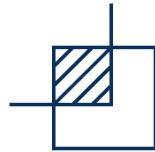
ADMIRALTY
Vector Chart Service Online



ADMIRALTY
UK ENC API



ADMIRALTY
Simplified Marine
Context

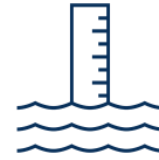


ADMIRALTY Maritime
Limits Service



ADMIRALTY Marine
Environment Service

Data API



Tidal
Information

Other



ADMIRALTY
GAM Service



Enhanced
Data Service



Current content

Free Download	Bathymetry Surfaces	Over 5000
Free Download	Maritime Limits	36
Free Download	Maritime Limit Illustrations	21
Free Download	Foundation Datasets	2
Free to View	Foundation Datasets	9
Paid Download	Foundation Datasets	9
S-100 Trial Data sets (Free Download)	S-101, 102, 104, 111, 121 and 122	6

Marine Data Portal – May 2022

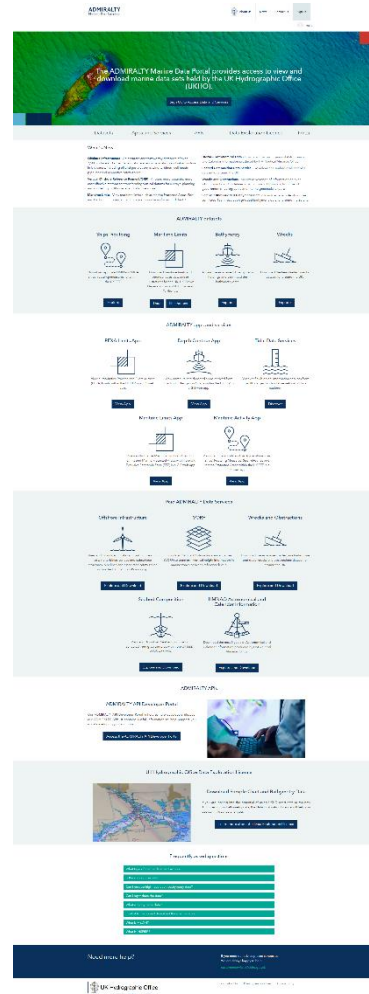
An organised gateway to our **non-navigation** data and services.

May 2022

Data & Services



Marine Data Portal



Non-Navigation Users



Geo-Data Engineer



Marine Archaeologist



Marine Consultant



Academic Professor



Coastal Engineer

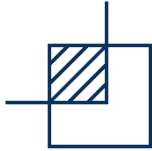
API Developer Portal

Supporting **non-navigation** users and the Marine Data Portal.

Data & Services



Offshore
Infrastructure



Port
Limits



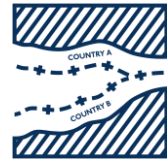
Simplified
Marine
Context



Ships
Routeing



INSPIRE
Wrecks



Maritime Limits &
Boundaries

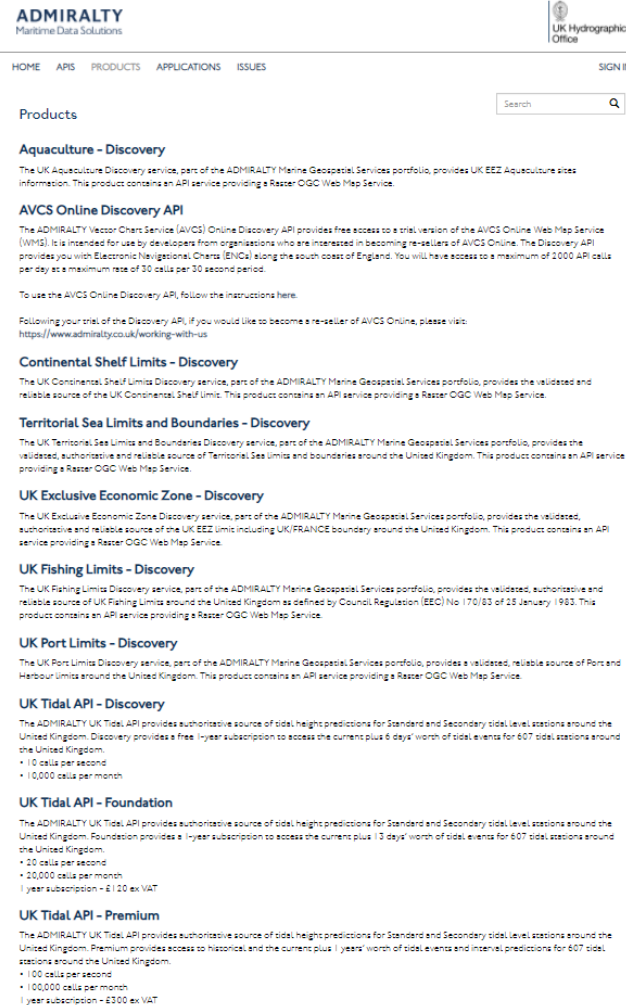


Tidal
Information



ADMIRALTY
Vector Chart Service Online

Developer Portal



ADMIRALTY
Maritime Data Solutions

HOME ARS PRODUCTS APPLICATIONS ISSUES SIGN IN

Products

Aquaculture - Discovery
The UK Aquaculture Discovery service, part of the ADMIRALTY Marine Geospatial Services portfolio, provides UK EEZ Aquaculture sites information. This product contains an API service providing a Raster OGC Web Map Service.

AVCS Online Discovery API
The ADMIRALTY Vector Chart Service (AVCS) Online Discovery API provides free access to a trial version of the AVCS Online Web Map Service (WMS). It is intended for use by developers from organisations who are interested in becoming re-sellers of AVCS Online. The Discovery API provides you with Electronic Navigational Charts (ENCs) along the south coast of England. You will have access to a maximum of 2000 API calls per day at a maximum rate of 30 calls per 30 second period.
To use the AVCS Online Discovery API, follow the instructions here.
Following your trial of the Discovery API, if you would like to become a re-seller of AVCS Online, please visit: <https://www.admiralty.co.uk/working-with-us>

Continental Shelf Limits - Discovery
The UK Continental Shelf Limits Discovery service, part of the ADMIRALTY Marine Geospatial Services portfolio, provides the validated and reliable source of the UK Continental Shelf Limits. This product contains an API service providing a Raster OGC Web Map Service.

Territorial Sea Limits and Boundaries - Discovery
The UK Territorial Sea Limits and Boundaries Discovery service, part of the ADMIRALTY Marine Geospatial Services portfolio, provides the validated, authoritative and reliable source of Territorial Sea Limits and boundaries around the United Kingdom. This product contains an API service providing a Raster OGC Web Map Service.

UK Exclusive Economic Zone - Discovery
The UK Exclusive Economic Zone Discovery service, part of the ADMIRALTY Marine Geospatial Services portfolio, provides the validated, authoritative and reliable source of the UK EEZ Limits including UK/France boundary around the United Kingdom. This product contains an API service providing a Raster OGC Web Map Service.

UK Fishing Limits - Discovery
The UK Fishing Limits Discovery service, part of the ADMIRALTY Marine Geospatial Services portfolio, provides the validated, authoritative and reliable source of UK Fishing Limits around the United Kingdom as defined by Council Regulation (EEC) No 170/83 of 18 January 1983. This product contains an API service providing a Raster OGC Web Map Service.

UK Port Limits - Discovery
The UK Port Limits Discovery service, part of the ADMIRALTY Marine Geospatial Services portfolio, provides a validated, reliable source of Port and Harbour Limits around the United Kingdom. This product contains an API service providing a Raster OGC Web Map Service.

UK Tidal API - Discovery
The ADMIRALTY UK Tides API provides authoritative source of tidal heights predictions for Standard and Secondary tidal Level stations around the United Kingdom. Discovery provides a free 1-year subscription to access the current plus 6 days' worth of tidal events for 607 tidal stations around the United Kingdom.
• 10 calls per second
• 10,000 calls per month

UK Tidal API - Foundation
The ADMIRALTY UK Tides API provides authoritative source of tidal heights predictions for Standard and Secondary tidal Level stations around the United Kingdom. Foundation provides a 1-year subscription to access the current plus 13 days' worth of tidal events for 607 tidal stations around the United Kingdom.
• 20 calls per second
• 20,000 calls per month
1 year subscription - €120 ex VAT

UK Tidal API - Premium
The ADMIRALTY UK Tides API provides authoritative source of tidal heights predictions for Standard and Secondary tidal Level stations around the United Kingdom. Premium provides access to historical, and the current plus 13 days' worth of tidal events and interval predictions for 607 tidal stations around the United Kingdom.
• 100 calls per second
• 100,000 calls per month
1 year subscription - €300 ex VAT

Non-Navigation Users



Contingency and Planning



Control Systems Support



Website developer




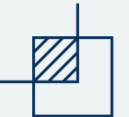


Meteorologist



Geospatial Developer



ADMIRALTY datasets

 <p>Ships' Routing</p> <p>Download approved IMO and MCA ships' routing measures for within the UK EEZ.</p> <p>Explore</p>	 <p>Maritime Limits</p> <p>Download maritime limits and boundaries as datasets or illustrations for the UK, UK Crown Dependencies and UK Overseas Territories.</p> <p>Data Illustrations</p>	 <p>Bathymetry</p> <p>Access the extensive UK bathymetry holdings and download the bathymetry data.</p> <p>Explore</p>	 <p>Wrecks</p> <p>Download the free charted wrecks dataset for around the UK.</p> <p>Explore</p>
--	---	---	---

Data is available to download via the ADMIRALTY Datasets section.

Much of the data is free to download and provided with an Open Government Licence.

Data is around the UK except for Maritime Limits which covers crown dependencies and overseas territories.

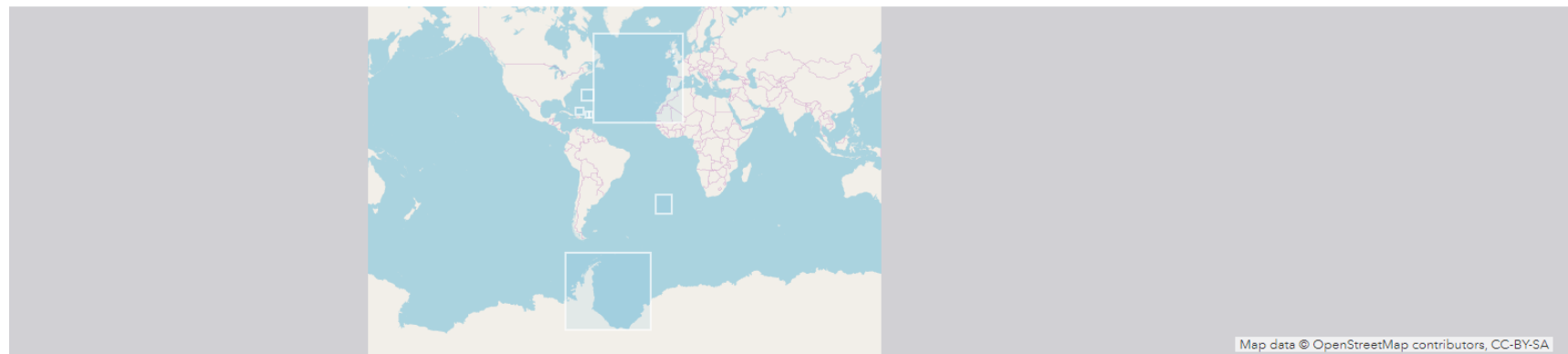
Key datasets:

- Wrecks – INSPIRE wrecks only charted wrecks in UK with limited attributes (Name of wreck is one of them)
- Bathymetry (seafloor mapping) – Over 5000 processed surfaces. These are the output of making survey data ready for use in charting.
- Maritime Limits – both data and PDF pictures used as a reference dataset.

Example User – Marine Archaeologist working on a impact assessment of a wind farm on the seascape. Needs access to seafloor mapping (bathymetry) and wrecks.

Data such as the Maritime Limits and Boundaries has coverage beyond the UK EEZ.

The Portal allows a user to search either geographically or via text to find the appropriate limit or boundary.



Views

 My Items

 Items

Suggested Filters

Access Level

Public

Tags

Law Of The Sea

Content Type

Feature Service

Owner

UKHO_LawOfTheSea





1 - 10 of 36 results

Relevance

Isle of Man Maritime Limits

Shared by UKHO_LawOfTheSea

The limits and boundaries of the UK, UK Overseas Territories and UK Crown Dependencies are available from this website in accordance with Articles 16, 74 and 84 of the United Nations Convention on the Law of the Sea. Limits are calculated from the normal baseline (the low water line on the largest UKHO charts) and limits are maintained




 Custom License  Accessible to Everyone  6/12/2019  Feature Service

ADMIRALTY
Maritime Data Solutions

UK Territorial Sea Limit

Shared by UKHO_LawOfTheSea

The limits and boundaries of the UK, UK Overseas Territories and UK Crown Dependencies are available from this website in accordance with Articles 16, 74 and 84 of the United Nations Convention on the Law of the Sea. Limits are calculated from the normal baseline (the low water line on the largest UKHO charts) and limits are maintained



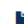
 Custom License  Accessible to Everyone  3/22/2019  Feature Service

ADMIRALTY
Maritime Data Solutions

British Antarctic Territory Maritime Limits

Shared by UKHO_LawOfTheSea

The limits and boundaries of the UK, UK Overseas Territories and UK Crown Dependencies are available from this website in accordance with Articles 16, 74 and 84 of the United Nations Convention on the Law of the Sea. Limits are calculated from the normal baseline (the low water line on the largest UKHO charts) and limits are maintained


 Custom License  Accessible to Everyone  6/12/2019  Feature Service

ADMIRALTY
Maritime Data Solutions

Turks and Caicos Maritime Limits

Shared by UKHO_LawOfTheSea

The limits and boundaries of the UK, UK Overseas Territories and UK Crown Dependencies are available from this website in accordance with Articles 16, 74 and 84 of the United Nations Convention on the Law of the Sea. Limits are calculated from the normal baseline (the low water line on the largest UKHO charts) and limits are maintained

 Custom License  Accessible to Everyone  6/12/2019  Feature Service

ADMIRALTY
Maritime Data Solutions

Users can preview a dataset and discover more about the data before choose to download it in a variety of formats which include GeoJSON, KML, Shapefile.

ADMIRALTY
Maritime Data Solutions



About Us

News

Contact Us

Sign up

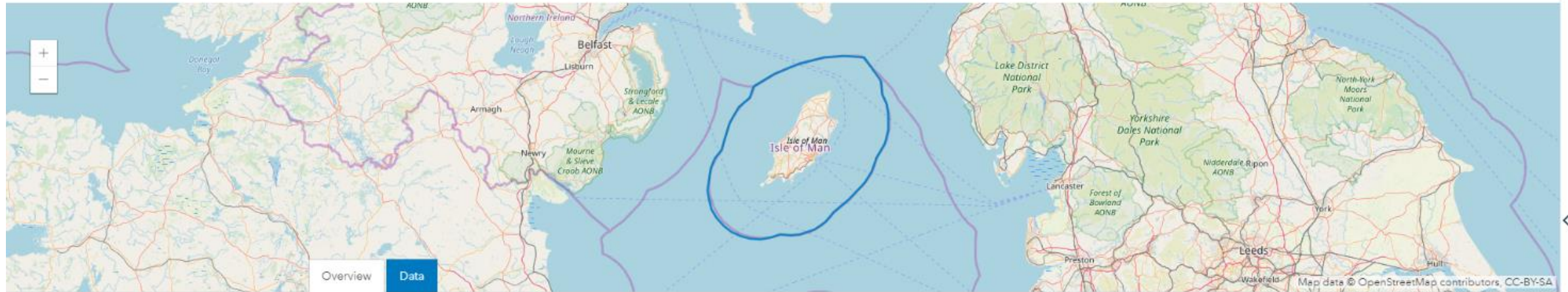
Find



My Data



Paul



Isle of Man Maritime Limits



1



Favorite

Download

APIs

No license specified Accessible to Everyone 6/12/2019 Feature Service

The limits and boundaries of the UK, UK Overseas Territories and UK Crown Dependencies are available from this website in accordance with Articles 16, 74 and 84 of the United Nations Convention on the Law of the Sea. Limits are calculated from the normal baseline (the low water line on the largest UKHO charts) and limits are maintained by UKHO. Please note that these limits will only be updated annually.

Attributes

Chart

category_o
Text

SHOW MORE
1 Attribute

About

Shared By: UI

Data Source: KML

Tagged with:
Excel

View Metadata

Create Webmap

Create a Story

Full Dataset

Shapefile

Spreadsheet

KML

Excel

File Geodatabase

GeoJSON

Feature Collection



GIS web apps give users a familiar GIS experience and are an easy way to discover and explore geospatial data.

ADMIRALTY
Maritime Data Solutions

Explore Our Bathymetry Data © Crown copyright 2019 UK Hydrographic Office Contact Customer Services

Search Survey, Wreck or O

North Pennines AONB

Bathymetry Survey Attributes

Attribute	Value
Survey Name	1997 Hi730 Flamborough Head Blk2
Bathymetry Data File	Download Bathymetry Data
Metadata XML	Download Metadata
Gridded Resolution	0
File Type	csv
Start Date	19970513
End Date	19970924
Source	02004783 csar
Horizontal coordinate system	GEOGCS["WGS84", DATUM["WGS84", SPHEROID["WGS_1984", 6378137, 0, 0, 0, 0, 0], PRIMEM["Easting", 0, 0, 0, 0, 0], UNIT["degree", 0.0174532925199432957691868111961446656515686429161696]]

Zoom to ...

Map data © OpenStreetMap contributors, CC-BY-SA **esri** POWERED BY



UK Hydrographic
Office

MSDI Case Studies...



UK Hydrographic
Office

Partnering with Anguilla





Objective

To deliver a data management solution to make geospatial data, particularly maritime data, more discoverable, accessible and manageable in support of disaster resilience, blue economic growth, government and infrastructure...






Proof of concept...


Anguilla Marine Data Portal

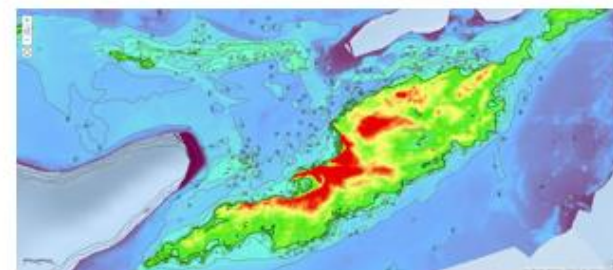
The Anguilla Marine Data Portal provides access to view and download marine data sets for Anguilla.



Anguilla Marine datasets

- Marine Datasets**
Download maritime limits and boundaries as datasets or illustrations for Anguilla.
[Download Data](#)
- Marine Data Viewer**
View and download Marine Environmental data such as wrecks, obstructions, depth contours and seabed types from around Anguilla.
[Explore Data Viewer](#)
- Bathymetry Data Viewer**
Access the extensive Anguilla bathymetry holdings and download the bathymetry data.
[Explore Data Viewer](#)

JNCC Datasets

Download datasets provided by the Joint Nature Conservation Committee (JNCC). JNCC are a public body that advise the UK Government and devolved administrations on UK-wide and international nature conservation.
[Download Data](#)



Anguilla Marine Data Portal proof of concept



Live Anguilla Data Hub

ADMIRALTY Marine Data Solutions Anguilla Data Hub

About Us News Contact Us

Google

The ADMIRALTY Anguilla Data Hub provides access to view and download marine and environmental data sets held by the UK Hydrographic Office (UKHO), and other UK Government agencies, on behalf of the Government of Anguilla.

Featured Data

Anguilla Marine Data Viewer

View and download Marine environmental data such as wrecks, obstructions, depth contours and seabed types from around Anguilla.

Discover

Anguilla Bathymetry

Access the extensive Anguilla bathymetric holdings, satellite derived coastline and download the processed survey data.

Discover

Download Datasets

ADMIRALTY Datasets

View and Download maritime information as datasets for Anguilla.

Explore and download

JNCC Datasets

View and Download JNCC data for Anguilla.

Explore and download

Download Datasets

ADMIRALTY Datasets

View and Download maritime information as datasets for Anguilla.

Explore and download

JNCC Datasets

View and Download JNCC data for Anguilla.

Explore and download

ADMIRALTY Apps and Services

Anguilla Bathymetric Viewer

Access the extensive Anguilla bathymetric holdings, satellite derived coastline and download the processed survey data.

Explore and download

LIDAR Elevation Viewer

Access the LIDAR elevation feature service.

Explore

LIDAR 3D Elevation Model

View a 3D elevation model derived from LIDAR elevation values with draped imagery and contour data.

Explore

Maritime Limits Viewer

View Anguilla Maritime Limits.

Explore Download Illustration

Wrecks Data Viewer

View wrecks, obstructions, cautionary areas and restrictive areas within Anguilla's EEZ. Select wrecks ROV footage can be viewed and downloaded from within the application.

Explore and download

Wrecks, obstructions, cautionary areas and restrictive areas within Anguilla's EEZ.

Select wrecks ROV footage can be viewed and downloaded from within the application.

Explore and download

Anguilla Marine Data Viewer

View and download Marine environmental data such as wrecks, obstructions, depth contours and seabed types from around Anguilla.

Explore and download

Anguilla AIS Viewer

View AIS data from around Anguilla.

Explore and download

Data Partners

JNCC Marine Data Viewer

View authoritative Maritime Limits such as Practice and Exercise Area (PEXA) Limits, Port Limits and Marine Protected Areas within the UK EEZ in a GIS web app.

Explore

Storm Surge Viewer

View JNCC data of potential inland flooding types, potential visual storm surge damage lines and a storm surge animation.

Explore

Wrecks ROV Survey Footage

Gain a unique insight into wrecks around Anguilla through underwater video footage captured using an ROV (Remotely Operated Underwater Vehicle) as part of the UK Hydrographic Office's international survey activities.

Explore and Download

Need more help?

Read our frequently asked questions

If you need our advice please contact us. We are always happy to help. customerservice@ukho.gov.uk

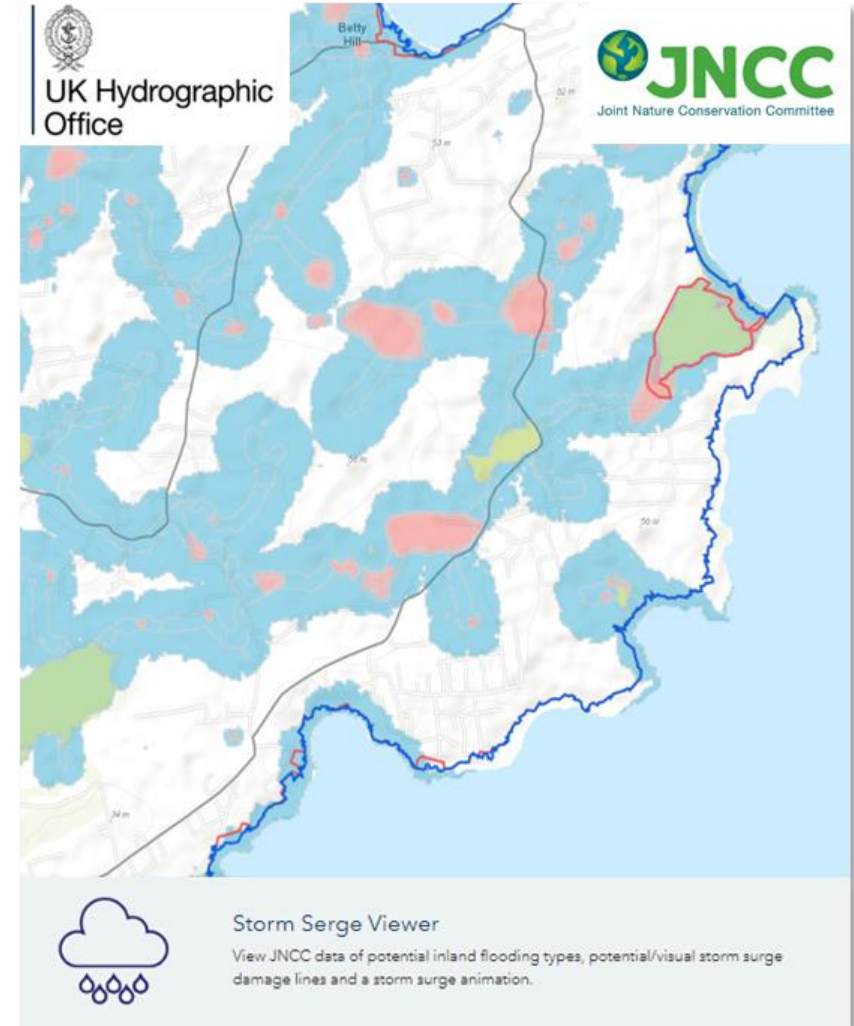
Home / Info / Accessibility

© Crown Copyright 2020 UK Hydrographic Office



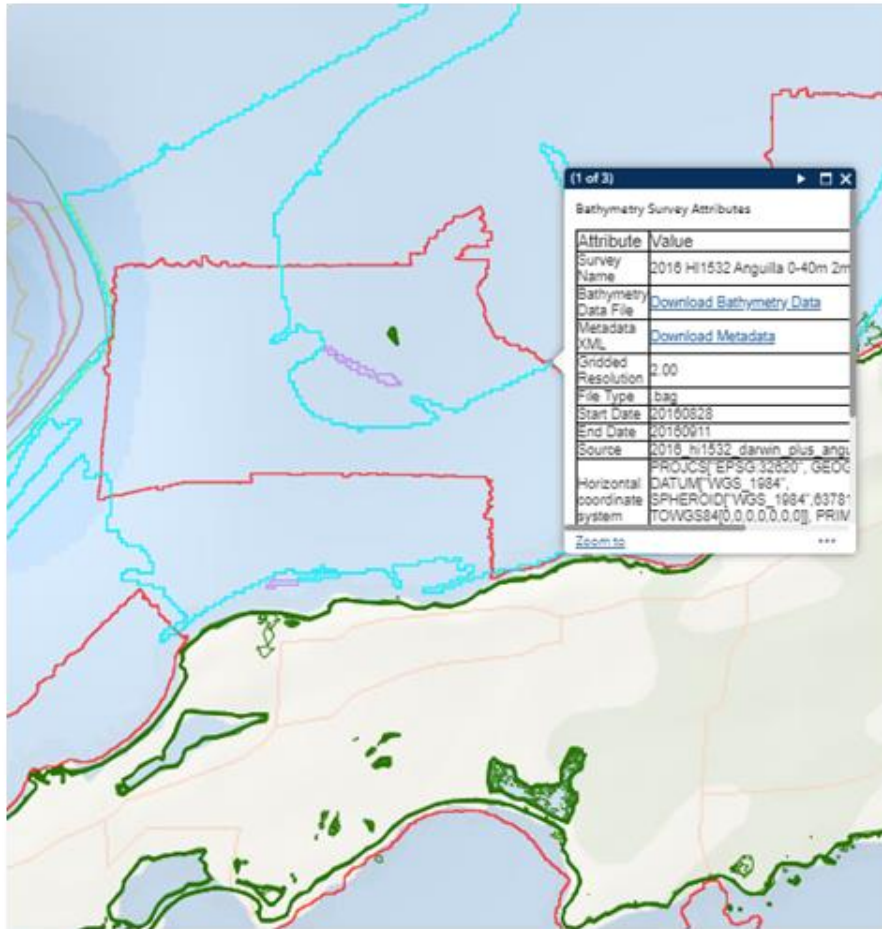
National Multi Agency Collaboration

- Partnered with UK Gov 'sister' agency to make environmental data available;
- Implemented appropriate governance and agreements;
- Data and associated metadata ingested into UKHO data platform and made available via web services;
- Demonstration of potential of MSDI.



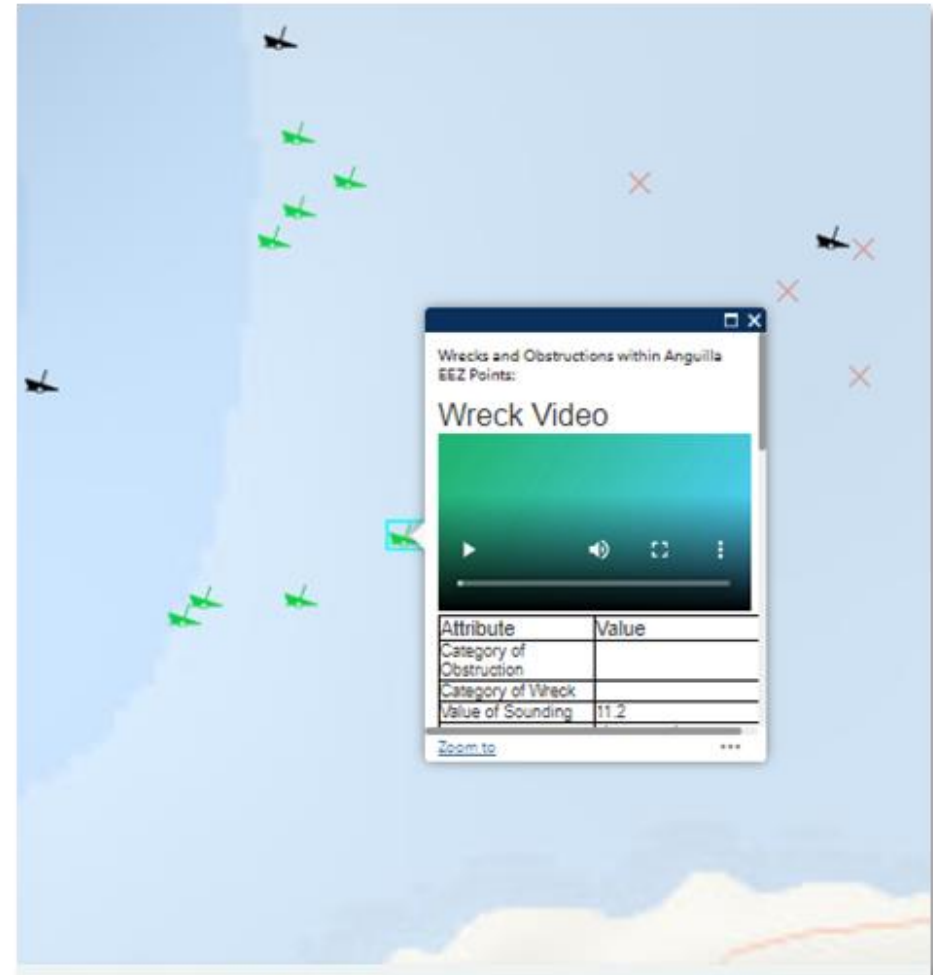


Data examples...



Anguilla Bathymetric Viewer

Access the extensive Anguilla bathymetric holdings, satellite derived coastline and download the processed survey data.



Wrecks Data Viewer

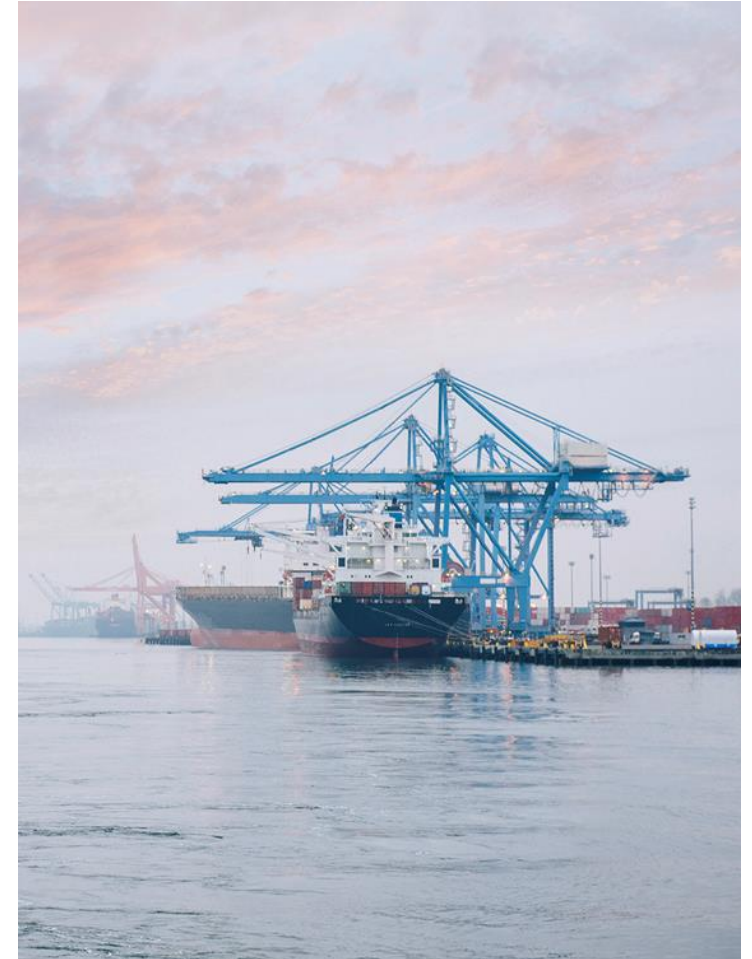
View wrecks, obstructions, cautionary areas and restrictive areas within Anguilla's EEZ. Select wrecks ROV footage can be viewed and downloaded from within the application.



Use Case

Anguillan stakeholders could...

- Plan port developments with far greater knowledge of seabed and ocean conditions;
- Enable larger cruise ships to dock;
- Provide significant investment to their tourism industry, which underpins the local economy.





UK Hydrographic
Office

Thank you

