

How MSDI could contribute to UN Sustainable Development Goals

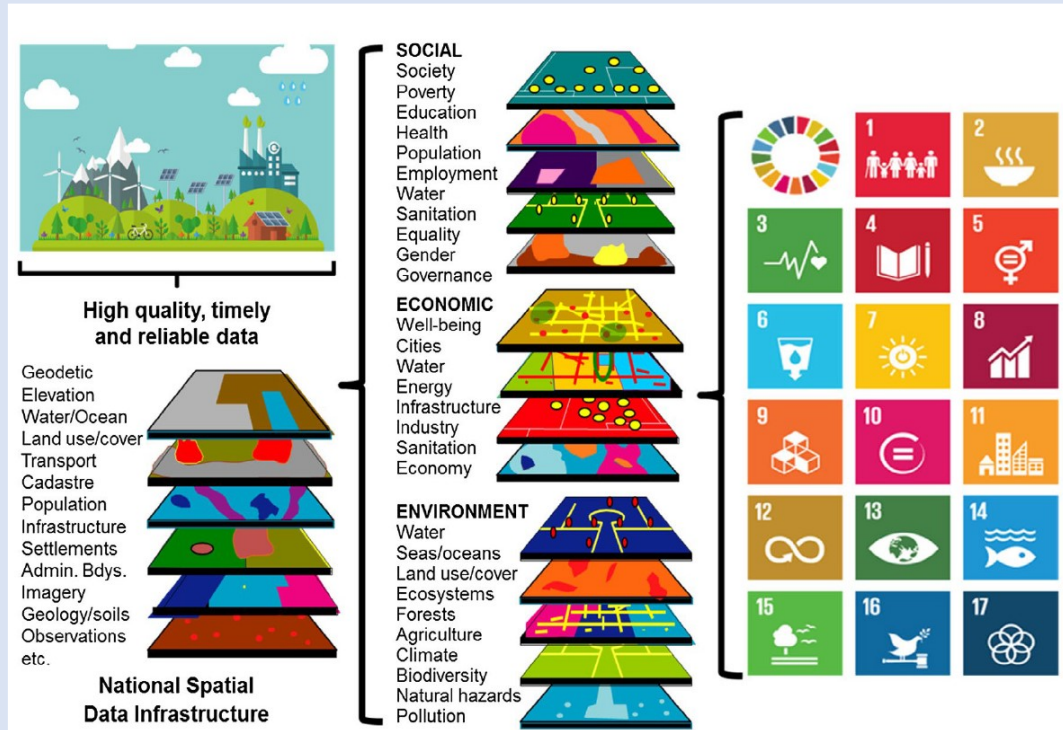


Figure 4. Extending fundamental geospatial data themes within the National Spatial Data Infrastructure (NSDI) to accommodate the SDGs and targets by means of the global indicator framework.

Potential contributions

- Sea Level Rise
- Sea Temperature
- Coastal zone mapping data (LiDAR, Earth Observation/Remote Sensing Data)
 - Change detection
 - Erosion
 - Infrastructure development
- ...and many more

Example: Sea Level Rise

| | | 1 NO POVERTY | 2 ZERO HUNGER | 3 GOOD HEALTH AND WELL-BEING | 4 QUALITY EDUCATION | 5 GENDER EQUALITY | 6 CLEAN WATER AND SANITATION | 7 AFFORDABLE AND CLEAN ENERGY | 8 DECENT WORK AND ECONOMIC GROWTH | 9 INDUSTRY, INNOVATION AND INFRASTRUCTURE | 10 REDUCED INEQUALITIES | 11 SUSTAINABLE CITIES AND COMMUNITIES | 12 RESPONSIBLE CONSUMPTION AND PRODUCTION | 13 CLIMATE ACTION | 14 LIFE BELOW WATER | 15 LIFE ON LAND | 16 PEACE, JUSTICE AND STRONG INSTITUTIONS | 17 PARTNERSHIPS FOR THE GOALS |
|-------------------------------------|--|--------------|---------------|------------------------------|---------------------|-------------------|------------------------------|-------------------------------|-----------------------------------|---|-------------------------|---------------------------------------|---|-------------------|---------------------|-----------------|---|-------------------------------|
| Addresses | | | | | * | | * | * | | * | | * | | | | | | |
| Bldgs and Settlements | | * | | * | * | | * MSDI | * | | * | | * | * | * | MSDI | | | |
| Elevation and depth | | * | * | * | | | * | * | | | | * | | * | * | * | | |
| Functional Areas | | * | * | * | * | * | * | * | * | * | * | * | * | * | * | * | * | * |
| Geographical Names | | * | * | * | * | * | * | * | * | * | * | * | * | * | * | * | * | |
| Geology and Soils | | | * | * | | | * | * | * | * | | * | * | * | * | * | | |
| Land Cover/Land Use | | * | * | * | | * | * | * | * | * | | * | * | * | * | * | MSDI | |
| Land Parcels | | * | * | | * | | | * | | | | * | | | | | | |
| Orthoimagery | | | * | | | | * | | | * | | * | | | * | * | | |
| Physical infrastructure | | | | * | * | | * | * | | * MSDI | | * | | | | | MSDI | |
| Population distribution | | * | * | * | * | * | * | * | * | * | * | * | * | * | * | * | * | MSDI |
| Transport Networks | | | * | * | | | | * | * | | | * | | | | | | |
| Water | | | * | * | | | * MSDI | * | | * | | * | * | * | * | * | | |
| Global Geodetic Reference Framework | | | * | | | | * | * | * | * | * | * | * | * | * | * | * | |



IHO

International Hydrographic Organization