

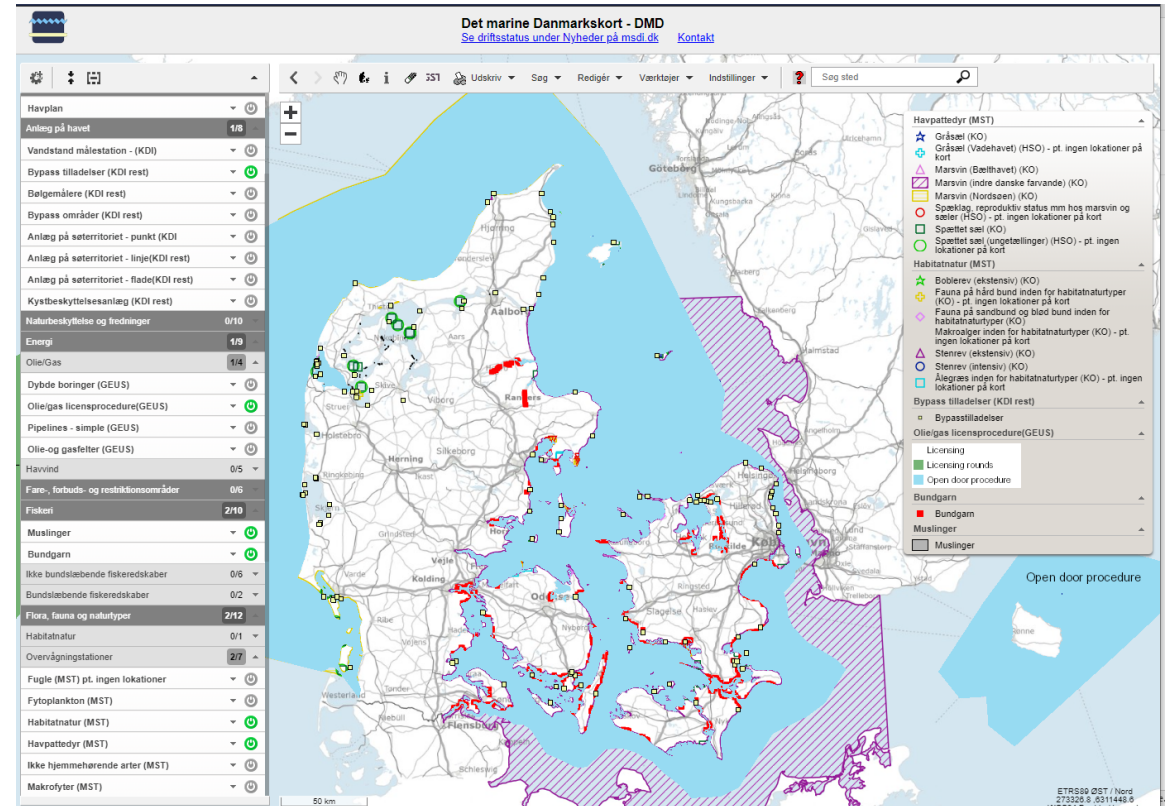
# The Danish MSDI

## National Report

MSDIWG13 - 9-13 May - 2022

# The Danish MSDI today

- A basic MSDI which allows users to visualize and use marine data from Danish marine authorities
- 110 marine data sets available today in such areas as:  
Infrastructure, Planning, Restriction Zones, Nature, Bathymetric data, Administrative Borders, Recreational Information etc.



# Overall Governance Structure

## Obligations for participating authorities

- The participating authorities that contribute their data commit to:
  - Provide Webservices (WMS), Downloadservice and Metadata as agreed upon within the technical description of the MSDI
  - Identify a "single point of contact", which the MSDI secretariat can refer to in case of technical problems for an authority
  - Participate in the MSDI-forum

## Financing

- From 2020 DGA has taken the full financial responsibility.

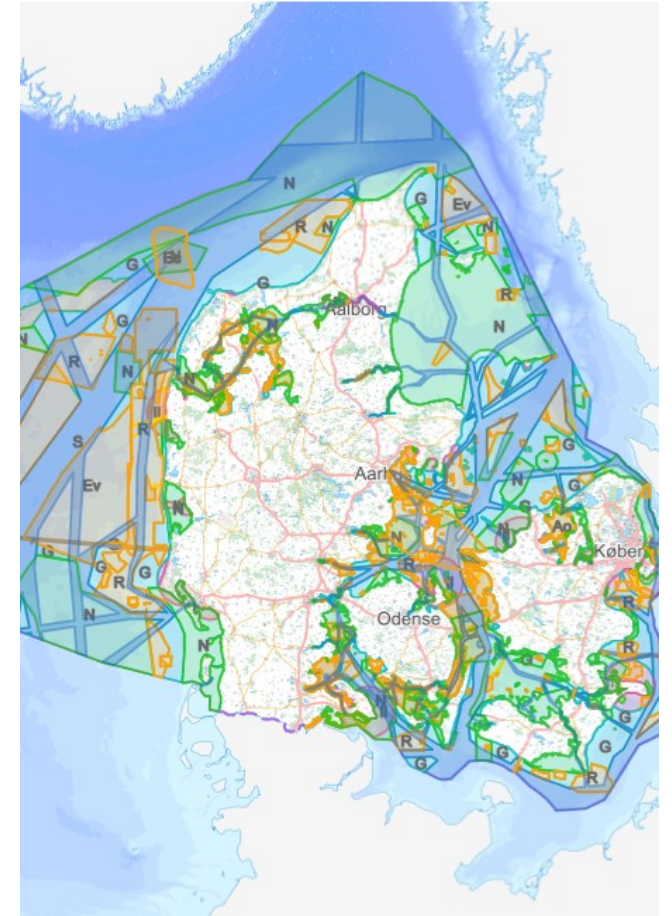
## Priced data

- For some dataset, which are included in the MSDI, applies that they are priced, such as nautical chart data. It is the individual data owners that set the guidelines for use of their data including access criteria, payment models and international exchange.



# Strong links to the coming new Maritime Spatial Plan

- The new Maritime Spatial Plan will be the first legally binding digital plan in the country and data and map in relation to the Maritime Spatial Plan will have a legal status.
- The aim is to build a user-friendly platform for hearings and information when several public authorities at different levels are involved.
- The Danish Maritime Authority are currently working on getting the first Danish Maritime Spatial Plan approved by the Danish government.
- However the approval are today delayed mainly due to heavy criticism of lacking focus on environmental issues



# A "basis" MSDI today in Denmark but vision for much more!!

- Momentum in Denmark for focus on information regarding marine information
- A positive business case has been presented on the Danish MSDI
- Work in progress on the strategy of the Danish MSDI and what user groups to focus on
- A new dedicated resource has been employed



# Challenges today

- Many authorities today share marine data – from a user it is not clear where to go
- Many authorities don't have services ready in order to be able to share data
- To go from a basis MSDI to the next levels demands a lot of resources, e.g. when making agreements with dataowners, documenting benefits, building a technical infrastructure etc.



Thank you

