

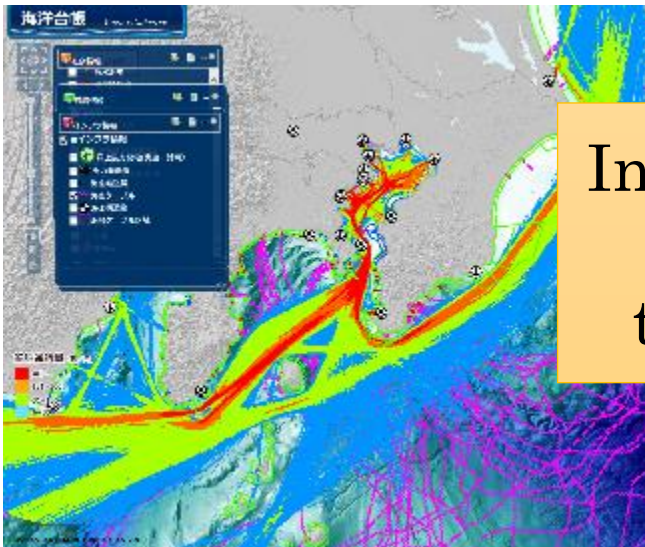
New Marine web-GIS services,
the “MSIL” in Japan
(MSIL: MDA Situational Indication linkages)

January 30, 2023

Hydrographic and Oceanographic
Department

2012~2018

“Marine Cadaster”

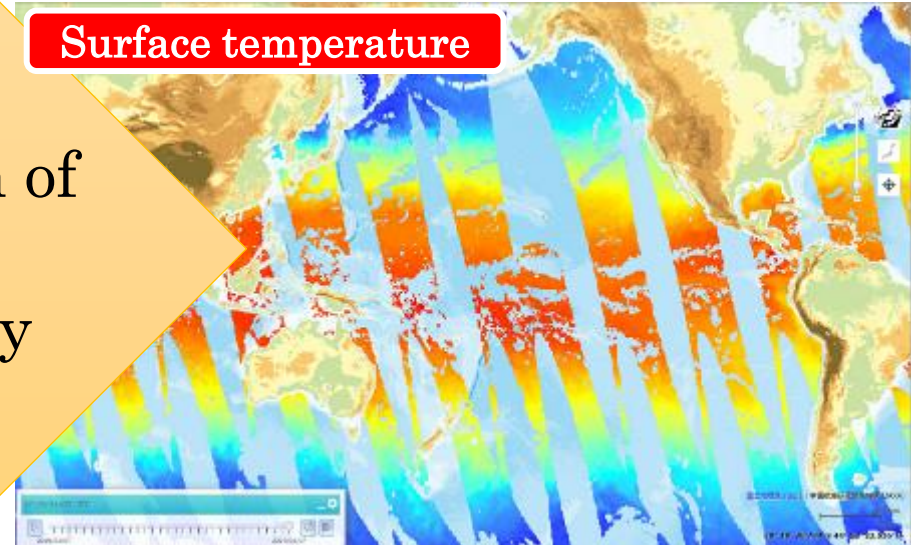


- Information surrounding Japan
- Only static information

- about 100 layers
- Working with other 6 agencies and data are centralized at JHOD server

2019~

New Web-GIS service “MSIL”



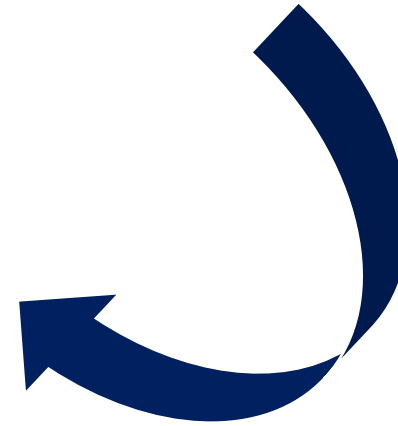
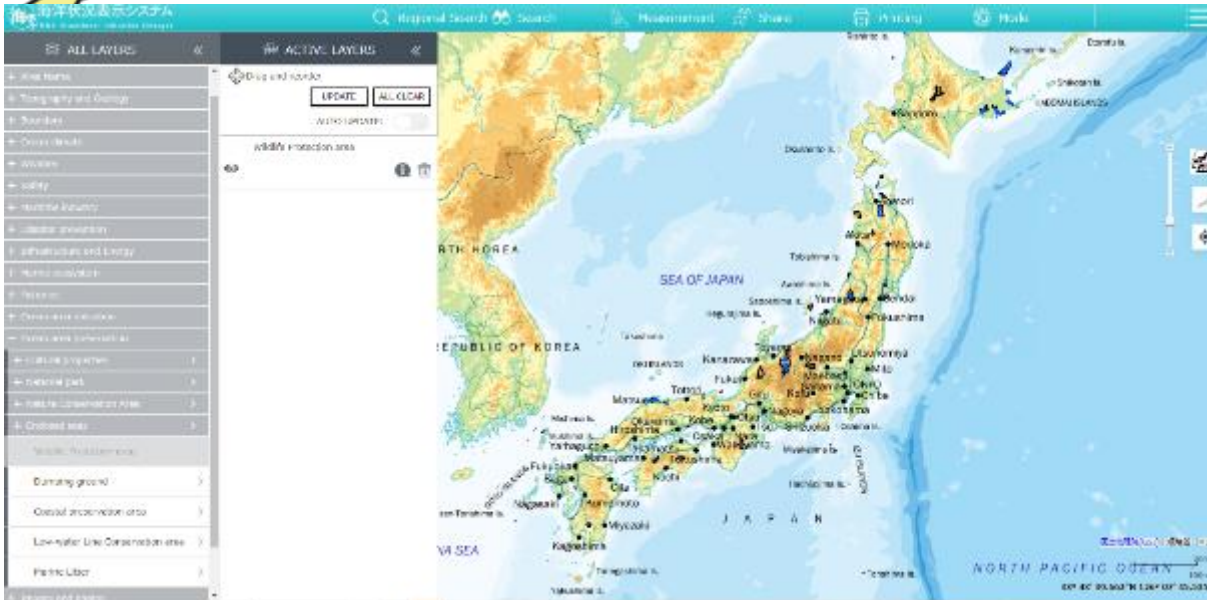
- Information at **global** scale
- **Real-time** information

- More than **250** layers
- Working with other 13 agencies
- **Distributed** database

Integration of
ArcGIS
technology

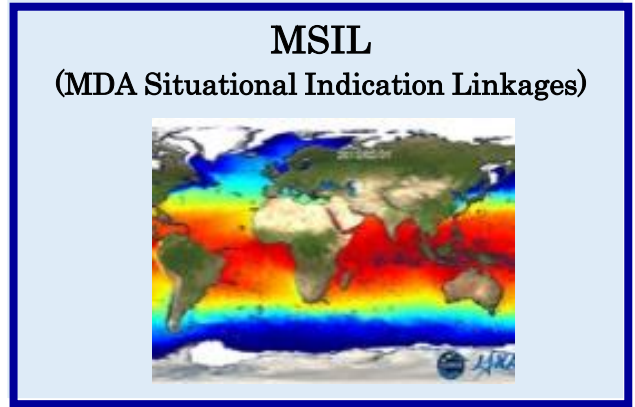


English Version



Schematic image of information sharing for MDA*

The concept of MDA applies various fields



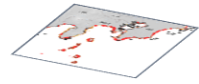
- Application field
- Maritime safety
 - Disaster preparedness
 - Promotion of marine industry
 - Environmental conservation
 - R/D
 - International collaboration and cooperation

Operated by JCG
Effective linkage with relevant systems of the government

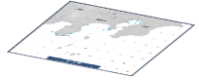


- Add Effectiveness and efficiency to the Marine policy making
- Quick decision making on the emergency case

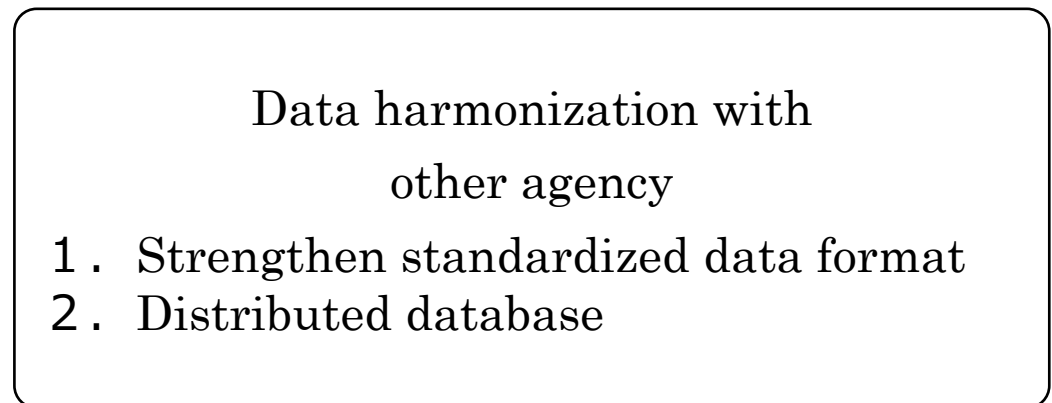
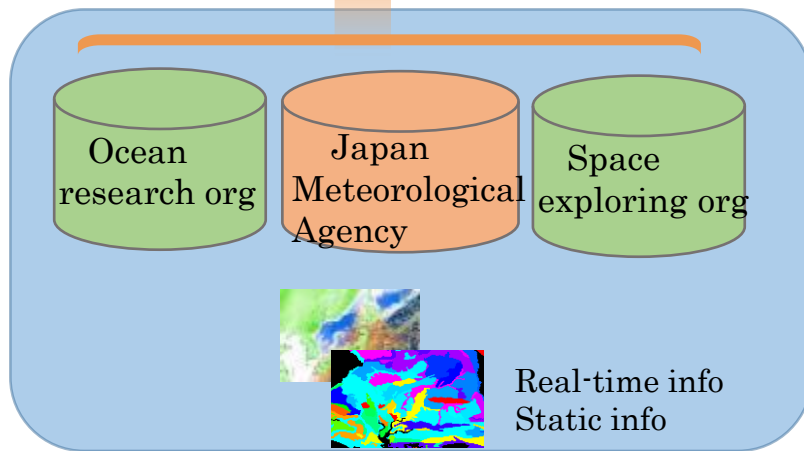
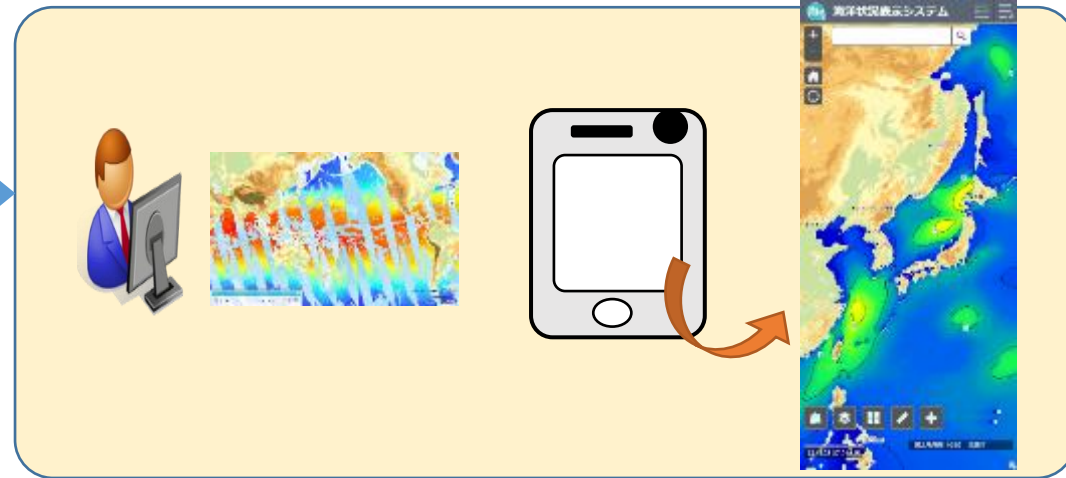
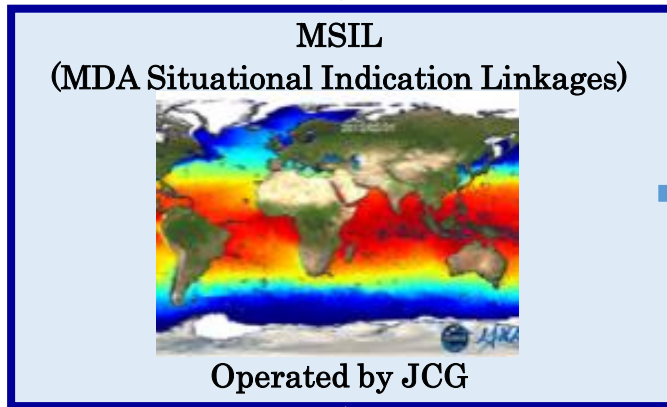
* “Policy and measures to strengthen Japan’s MDA capability”
(decided by the Headquarters for Ocean Policy in 2018)



Real-time info



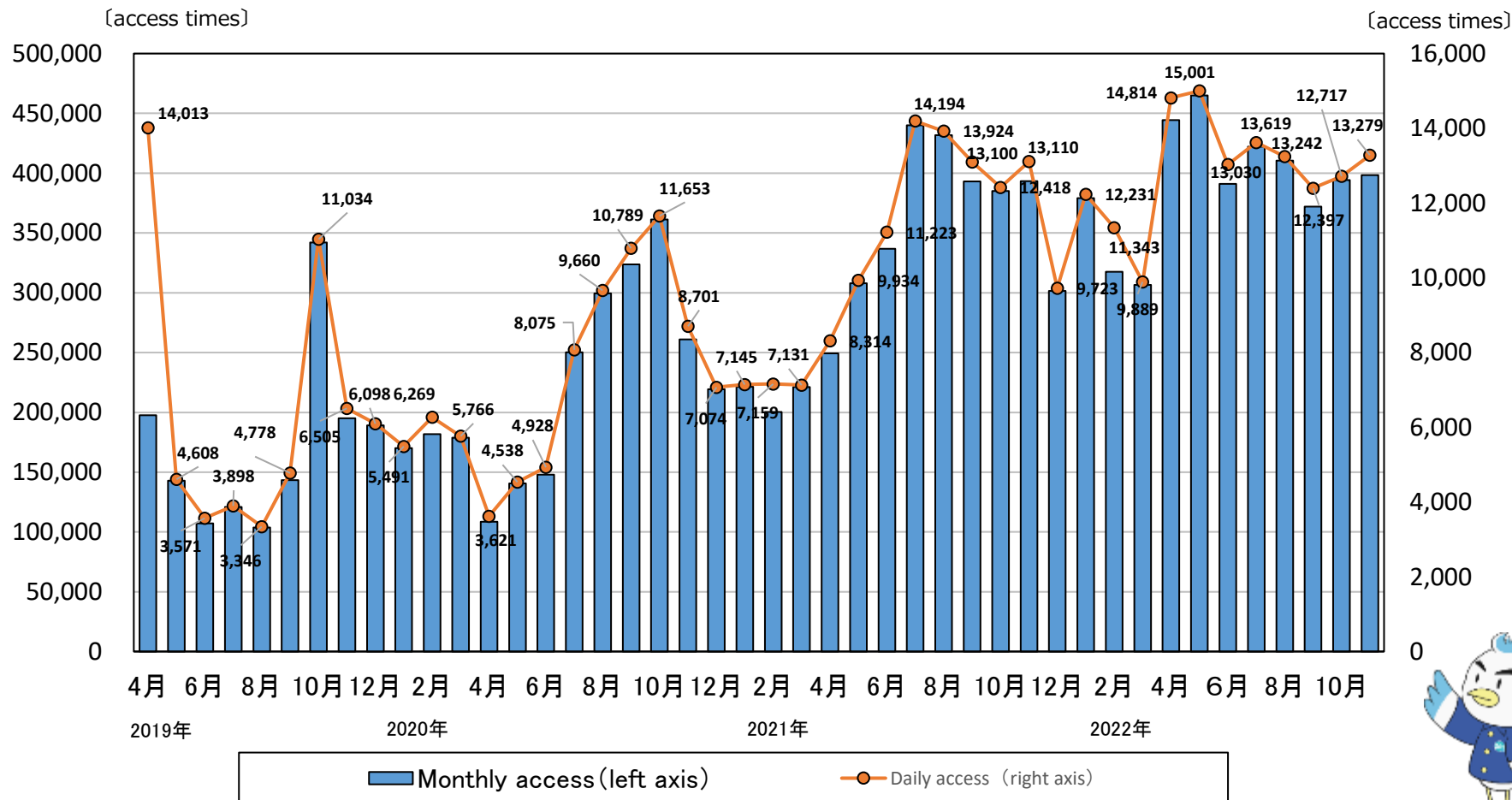
Static info



MSIL web access status (2019.4 ~ 2022.11)



- Since MSIL operated from 2019, the number of access has increased
- In 2022, the number of daily access has reached 10,000

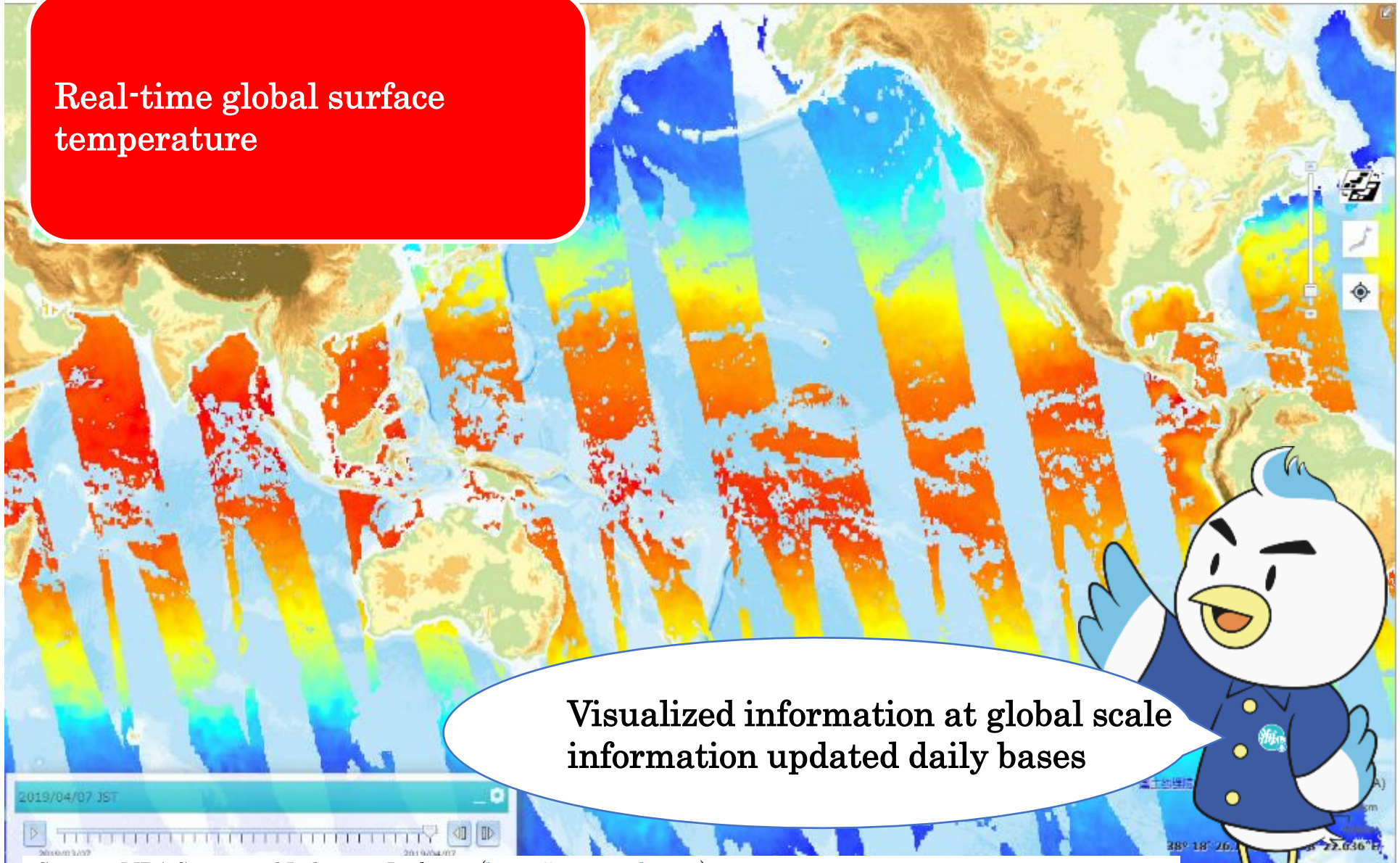


Example 1

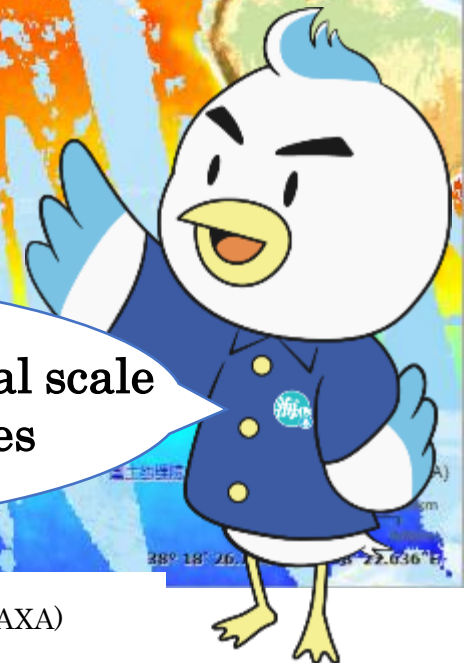


JAPAN COAST
GUARD

Real-time global surface
temperature



Visualized information at global scale
information updated daily bases

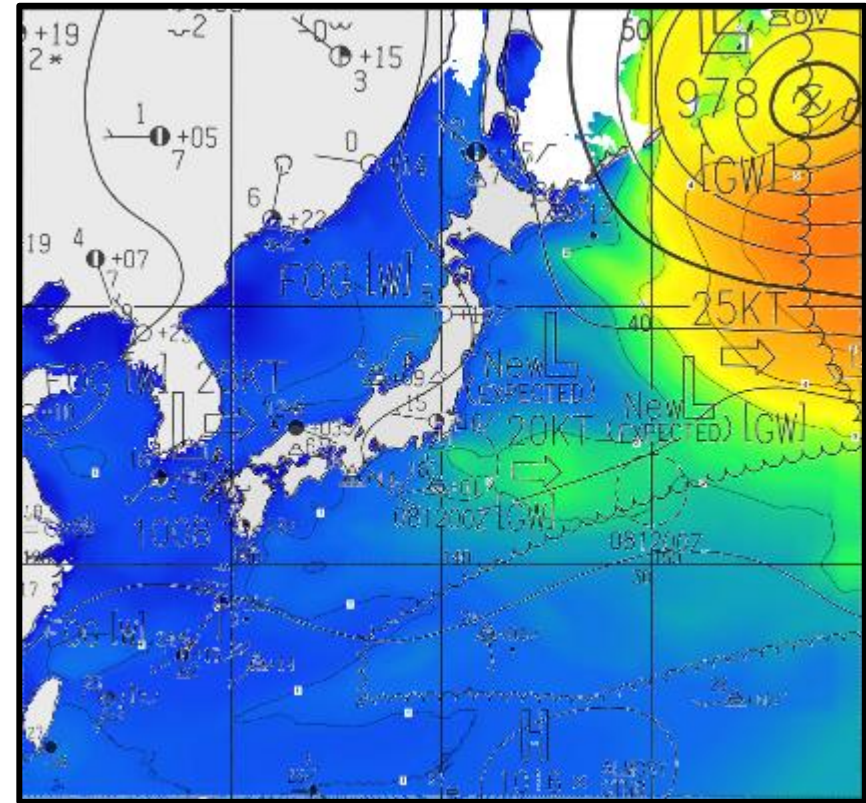
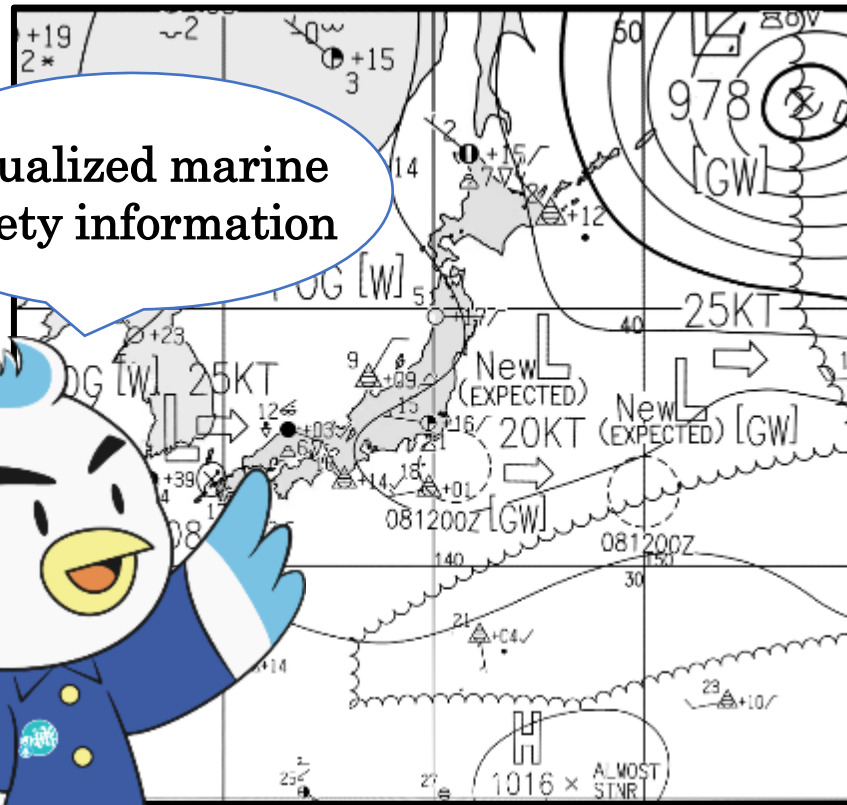


Source : MDA Situational Indication Linkages (<https://www.msil.go.jp/>)

Information source : Geospatial Information Authority of Japan and Japan Aerospace Exploration Agency (JAXA)

Weather map + wave height (Japan Meteorological Agency)

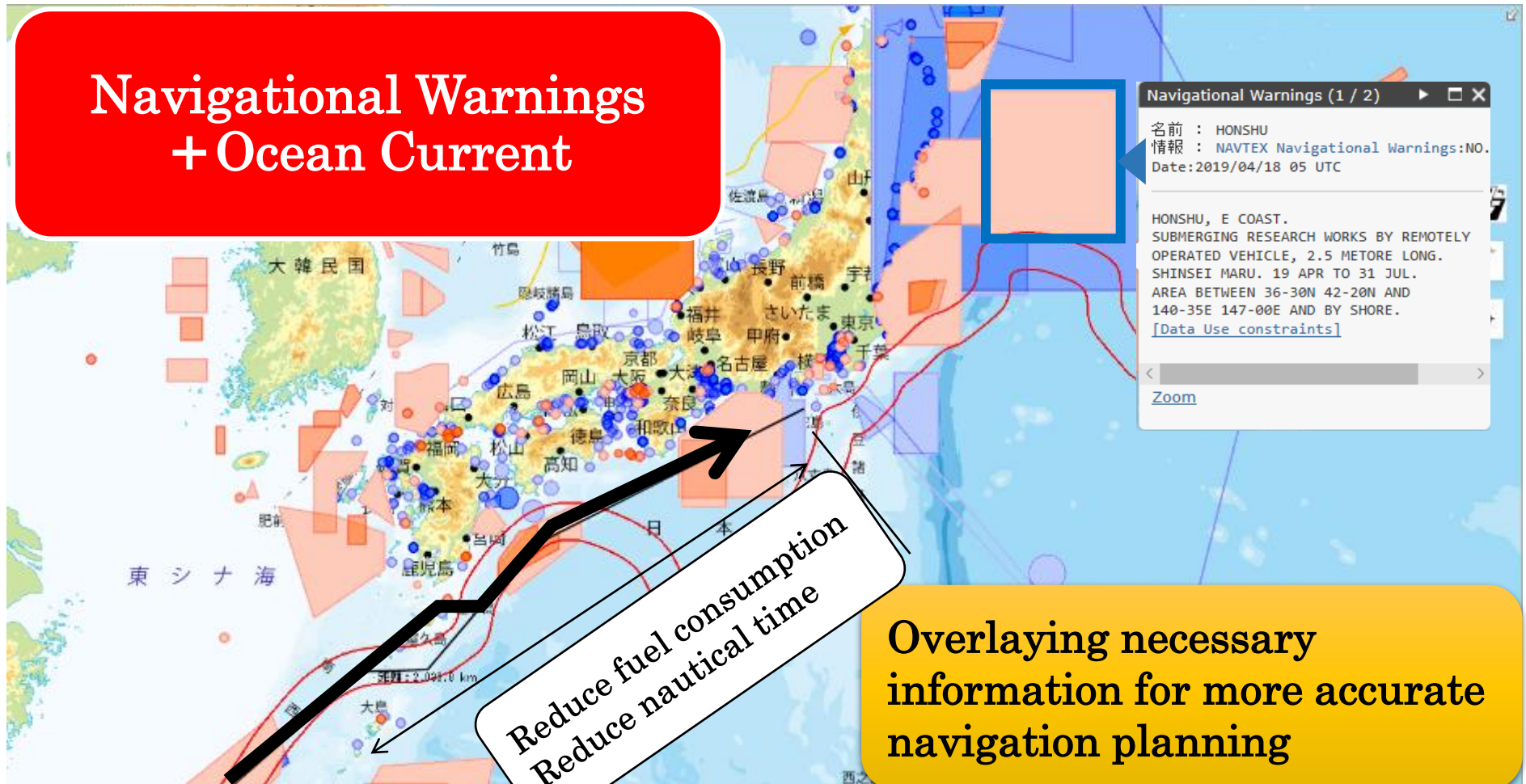
Visualized marine
safety information



Source : MDA Situational Indication Linkages (<https://www.msil.go.jp/>)

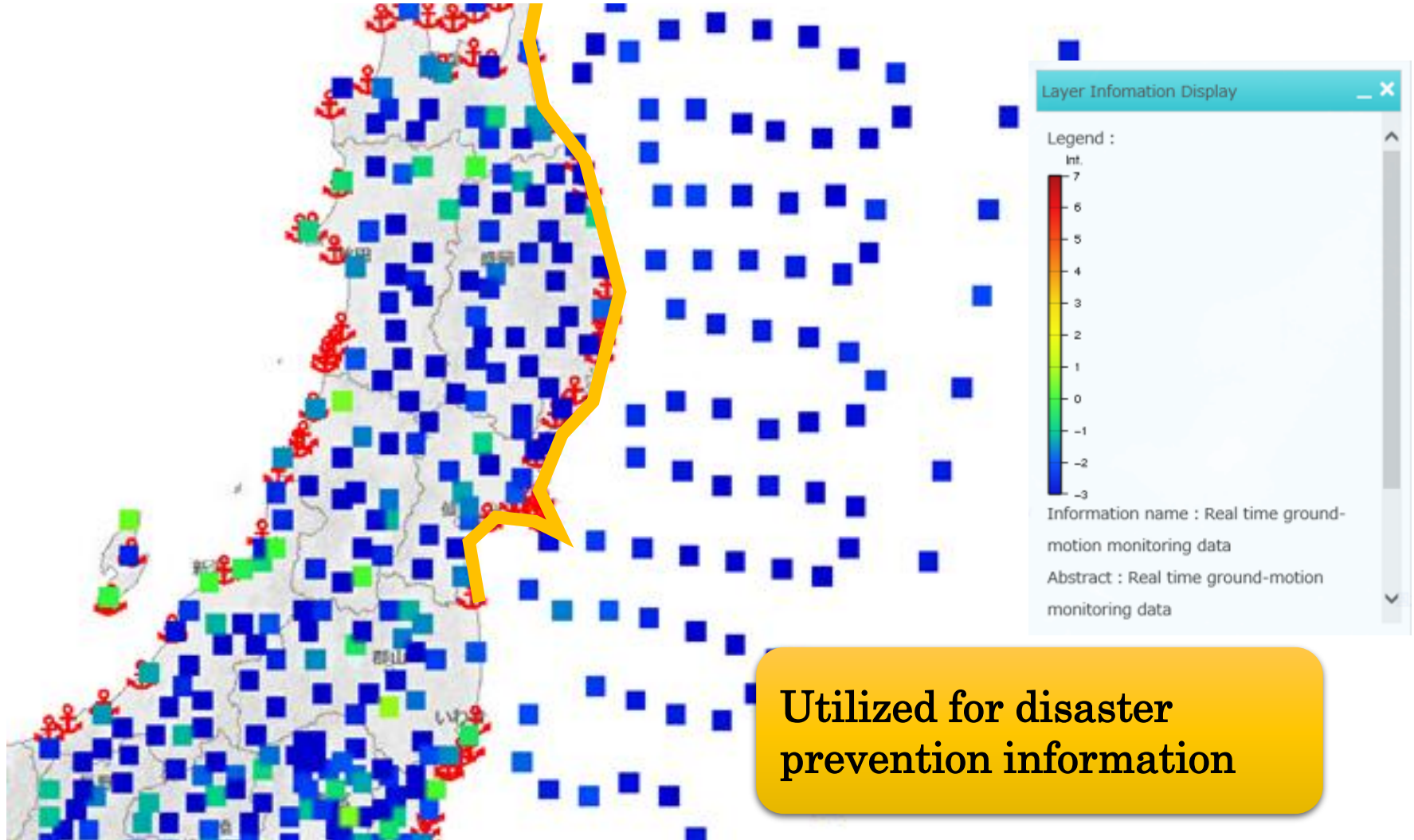
Information source : Geospatial Information Authority of Japan and Japan Meteorological Agency

Navigational Warnings + Ocean Current



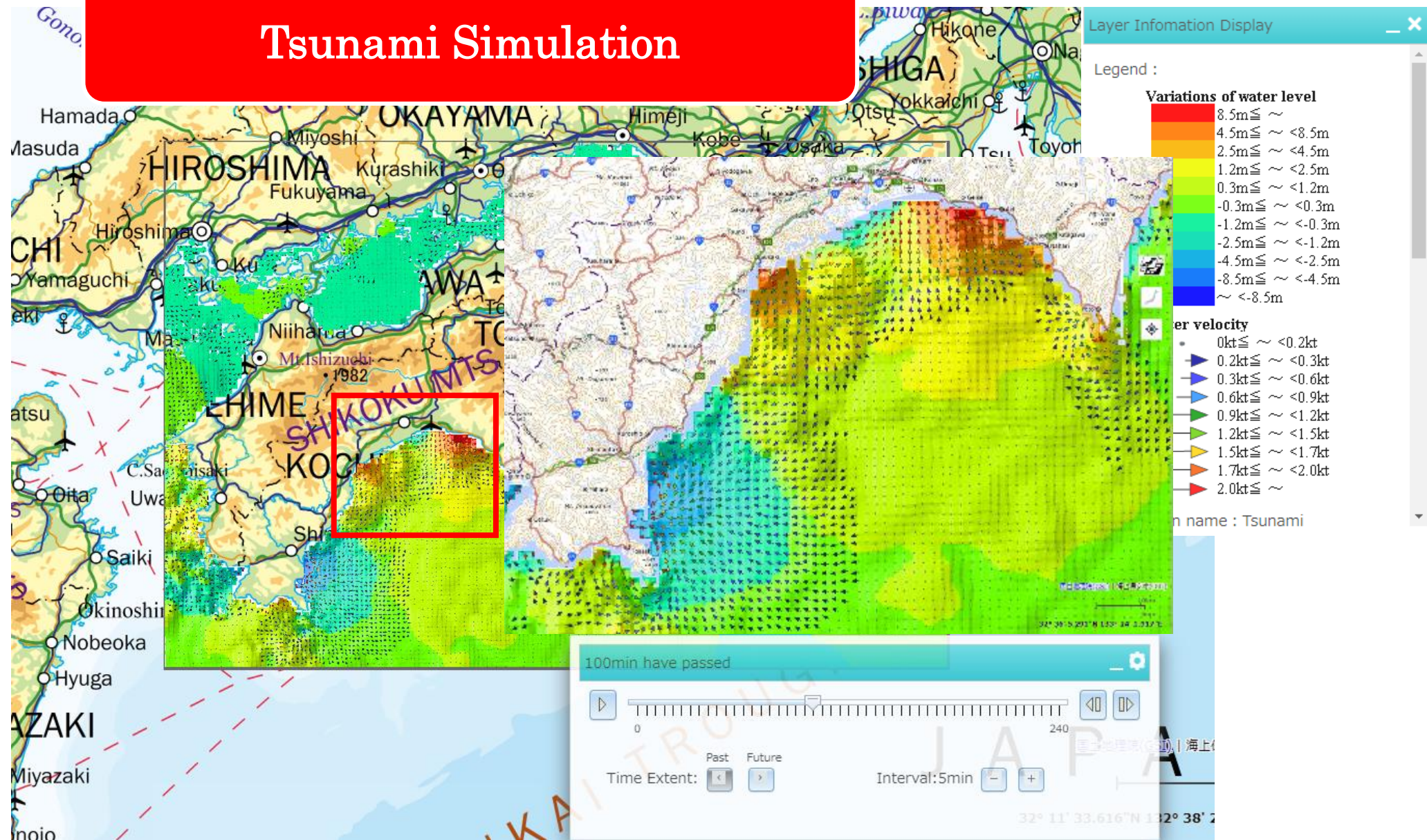
- Accurate grasp of the warning area
- Consider ocean current and route setting effectively

Earthquake intensity + tsunami warning

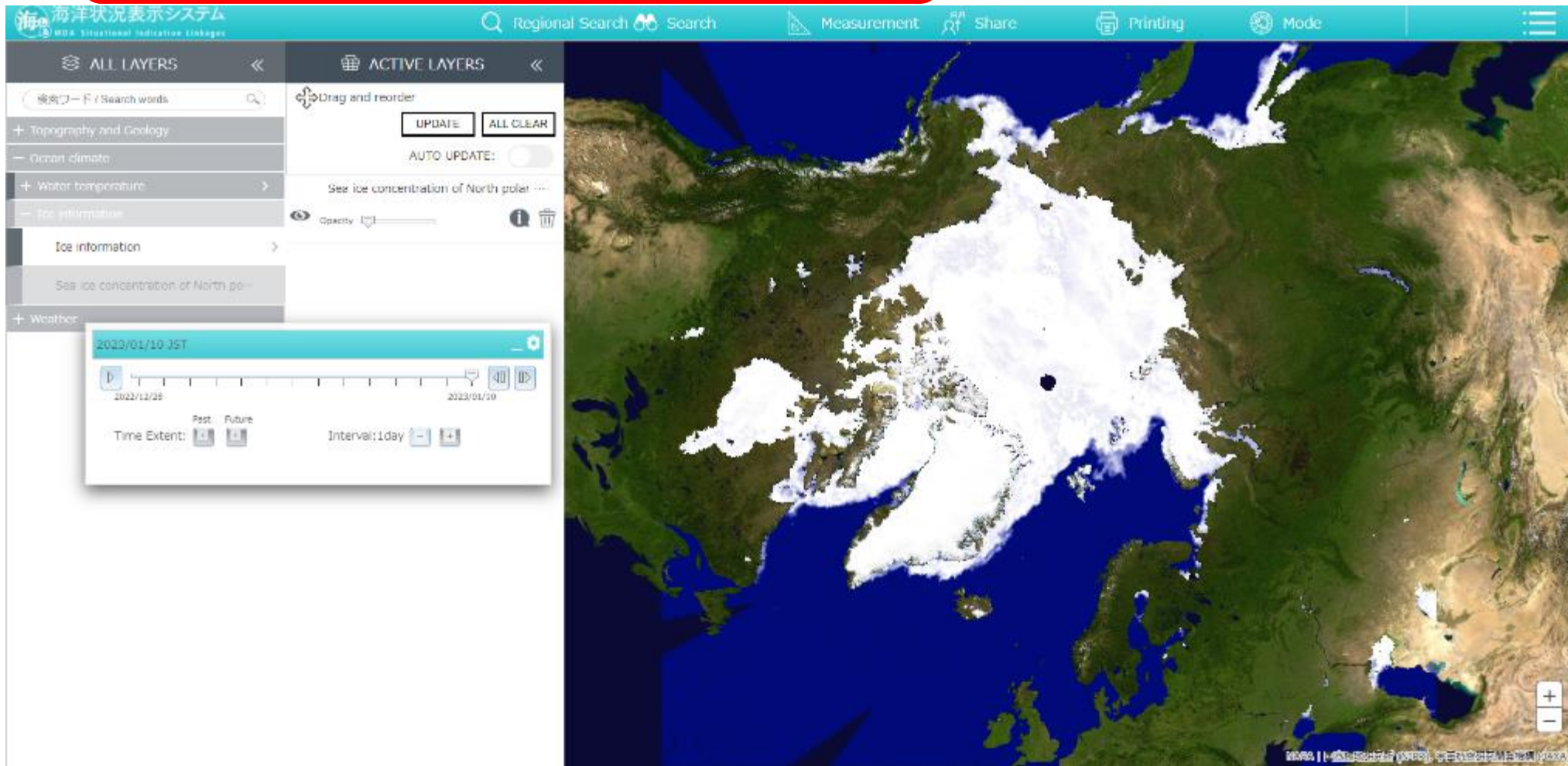


Utilized for disaster
prevention information

Tsunami Simulation









Sea ice concentration of North Pole



Thematic Maps

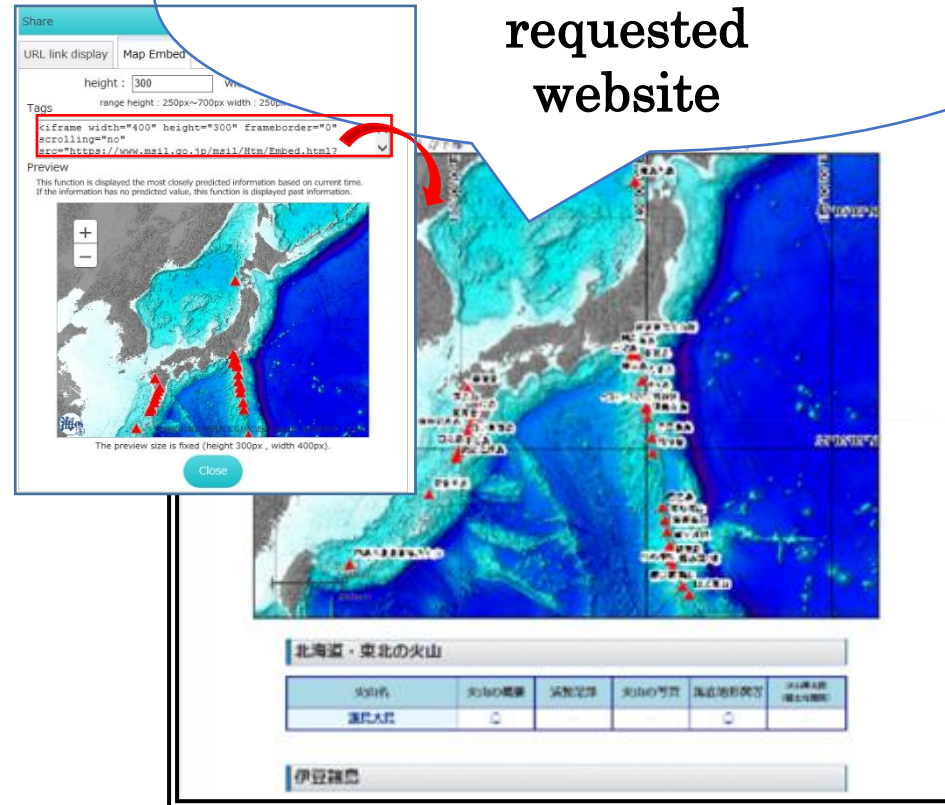
Thematic Maps
テーマ別マップ
利用目的に合わせた情報が選択されたマップを表示します。

 海洋レジャー Marine Leisure	 港湾管理 Port Management	 水産 Fisheries
<ul style="list-style-type: none">■ マリーナ■ 海水浴場■ 潮干狩り場■ 潮汐■ 藻場■ 等深線■ 船舶通航量■ 漁業権区画	<ul style="list-style-type: none">■ 航路■ 海面水温■ 船舶通航量■ 漁業権区画	<ul style="list-style-type: none">■ 潮流推算■ 海流■ 海面水温
 環境保全 Environmental Conservation	 海洋開発 Ocean Development	 油 油防除 (CeisNet) Discharge Oil Control
<ul style="list-style-type: none">■ 藻場■ 干潟■ 航路■ 漁業権区画■ 等深線■ 船舶通航量■ 環境脆弱性指標 (ESI)	<ul style="list-style-type: none">■ 等深線■ 海上構造物■ 航路■ 漁業権区画■ 国立公園■ 国立公園■ 洋上風力発電(実施・計画)	<ul style="list-style-type: none">■ 防除資機材■ 取水施設■ 港湾写真■ 海岸写真■ 火力発電所■ UTMグリッド■ 環境脆弱性指標 (ESI) 等

MSIL has map set of each theme (fishery, marine leisure etc.) as Thematic Maps (Japanese only)

Source : MDA Situational Indication Linkages (<https://www.msil.go.jp/>)

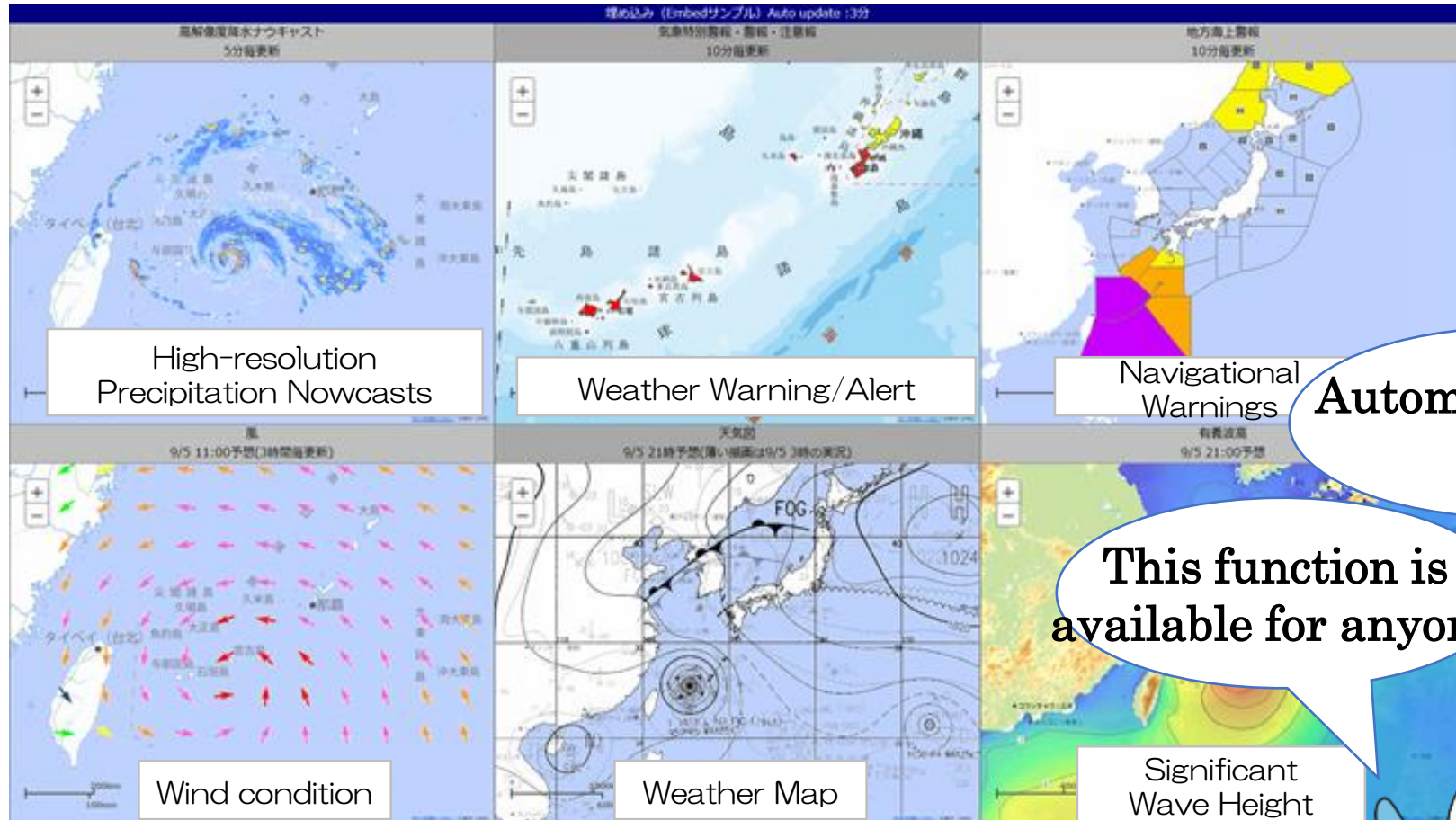
The MSIL maps can be saved as URL and imported into requested website



The screenshot shows the MSIL map sharing interface. A red box highlights the 'Map Embed' section, which contains a code snippet for embedding the map into a website. The code is: `<iframe width="400" height="300" frameborder="0" scrolling="no" src="https://www.msil.go.jp/msil/Itss/Embed.html?>`. Below the code is a preview of the map, which is a satellite view of the Japanese coast. The map is displayed in a window with a 'Close' button. Below the map, there is a table with columns for '火山名', '火山の概要', '気象定評', '火山の写真', '海沿地帯地図', and '火山防災 関係機関'. The table is currently empty. Below the table, there is a section for '伊豆諸島'.

Source : MDA Situational Indication Linkages (<https://www.msil.go.jp/>)
Information source : GEBCO | (C)Esri Japan, Geospatial Information Authority of Japan and Metrological Agency

Real-time Monitoring of multiple information on One Screen! Example : A Typhoon hit Okinawa islands on September 5, 2020



Automatic update

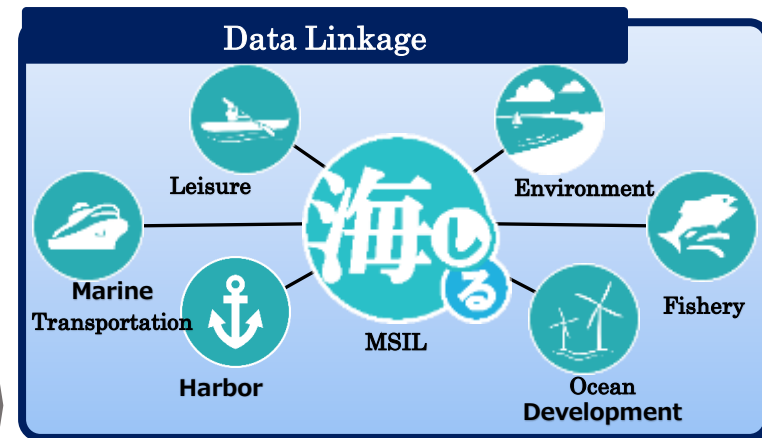
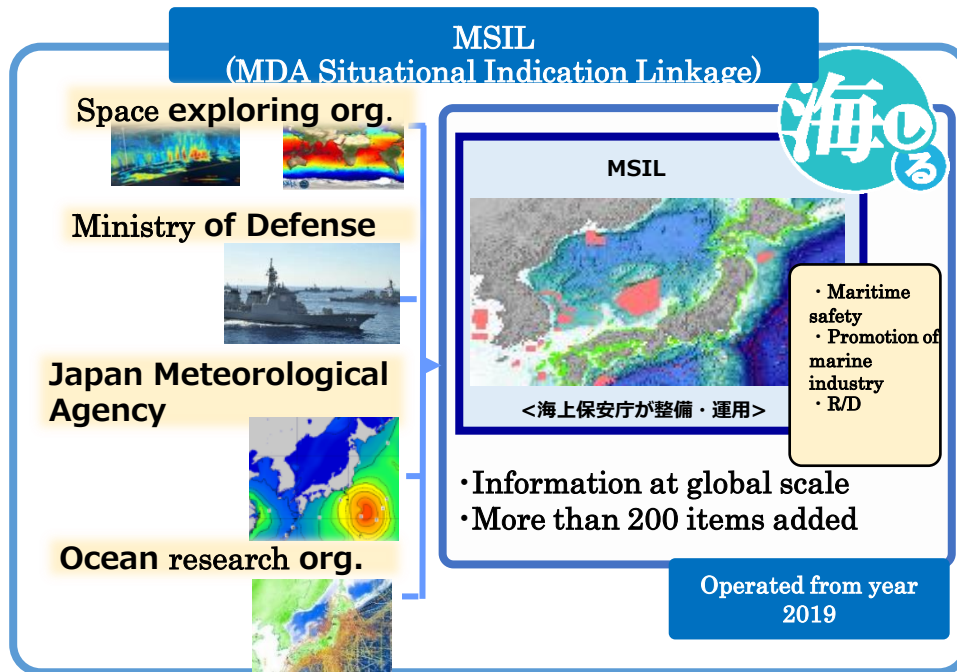
This function is available for anyone!



Source : MDA Situational Indication Linkages (<https://www.msil.go.jp/>)
Information source : Geospatial Information Authority of Japan and Metrological Agency

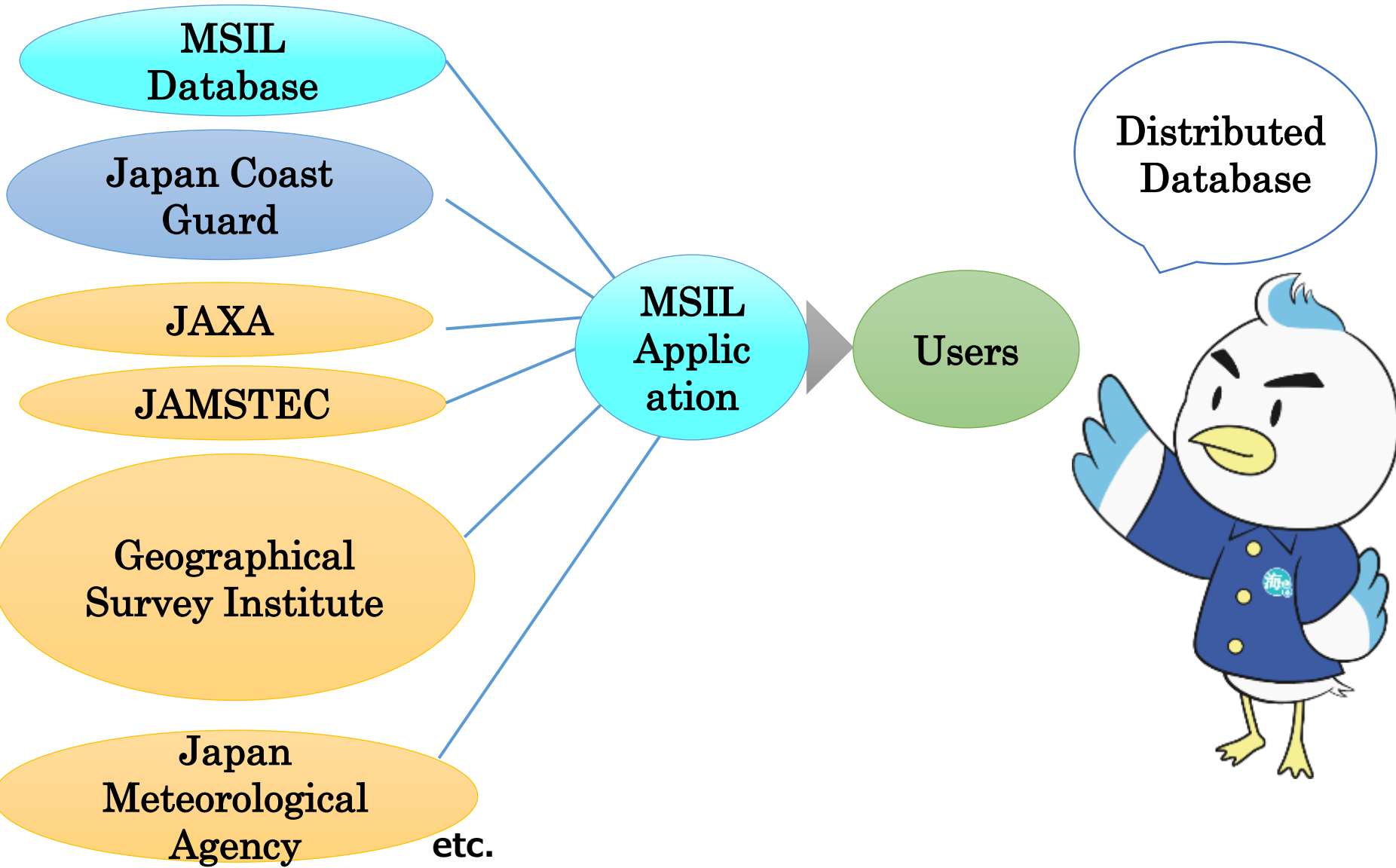
Collecting information for disaster prevention by Disaster Prevention Agency

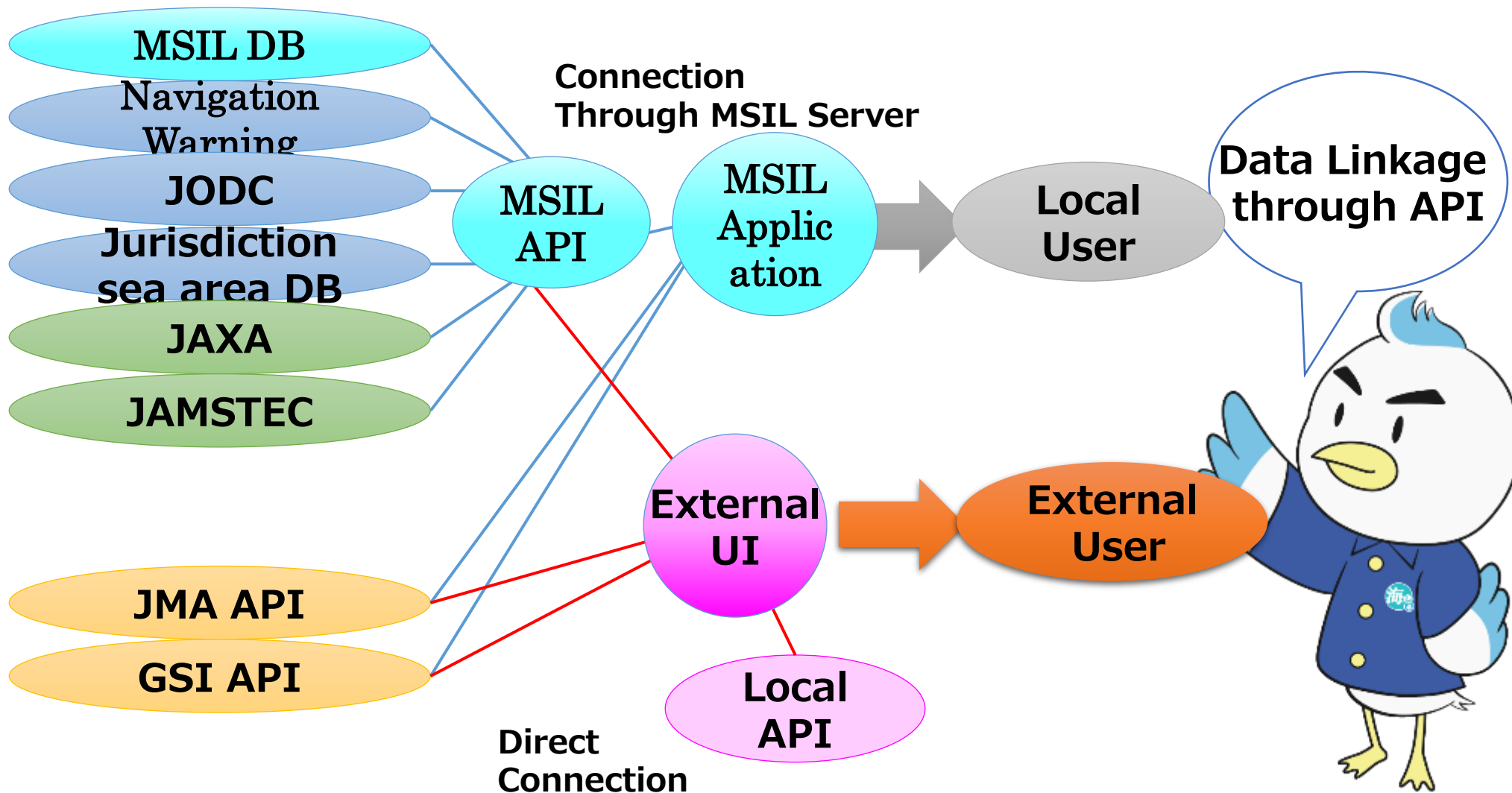
■ It is of great significance to contribute ocean industry as well as ocean policy through MSIL as ocean data service as a hub (2020/2021 economic growth strategy of Japan)



Things to Consider

■ To understand the needs from users, especially commercial sectors which belong to marine environment







Japan Coast Guard released Marine Education Contents on MSIL toward elementary and junior high school students in order to promote marine education in Japan.

Features of 「MSIL」 Marine Education Contents


Point 1
No need to install
Application software



Point 2
Select theme from
Various fields



Point 3
Select relevant information
and create 「MSIL」 map



「MSIL」 Marine Education Contents

●●● 教科・単元から探す ●●●

	理科	社会/地理・公民
小学3年生	風のたつたき	市の様子
小学4年生	海のつくりかた	海のつくりかた
小学5年生	海のつくりかた	海のつくりかた
小学6年生	海のつくりかた	海のつくりかた
中学1年生	海のつくりかた	海のつくりかた
中学2年生	海のつくりかた	海のつくりかた
中学3年生	海のつくりかた	海のつくりかた

Select theme

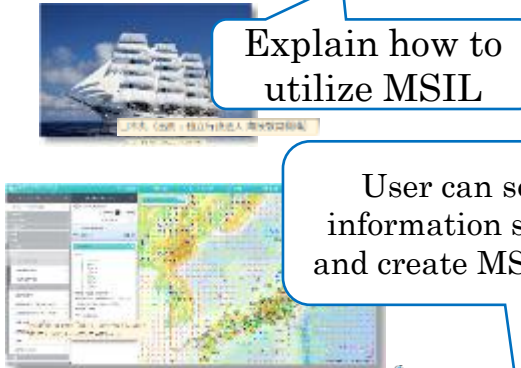


風のはたらき

海しるのつかいかた

Explain how to utilize MSIL

User can select information sources and create MSIL map



- As government ministries, this service (MSIL) is the first attempt to gather **250 information from 13 different organizations and visualize global real-time data in one screen**
 - Best use of latest web-based GIS technology
 - Significance of the MSIL: simplicity, functionality, operability

Thank you for your kind attention!



Please Check the Website

<https://www.msil.go.jp/>



MSIL Japan

Search

