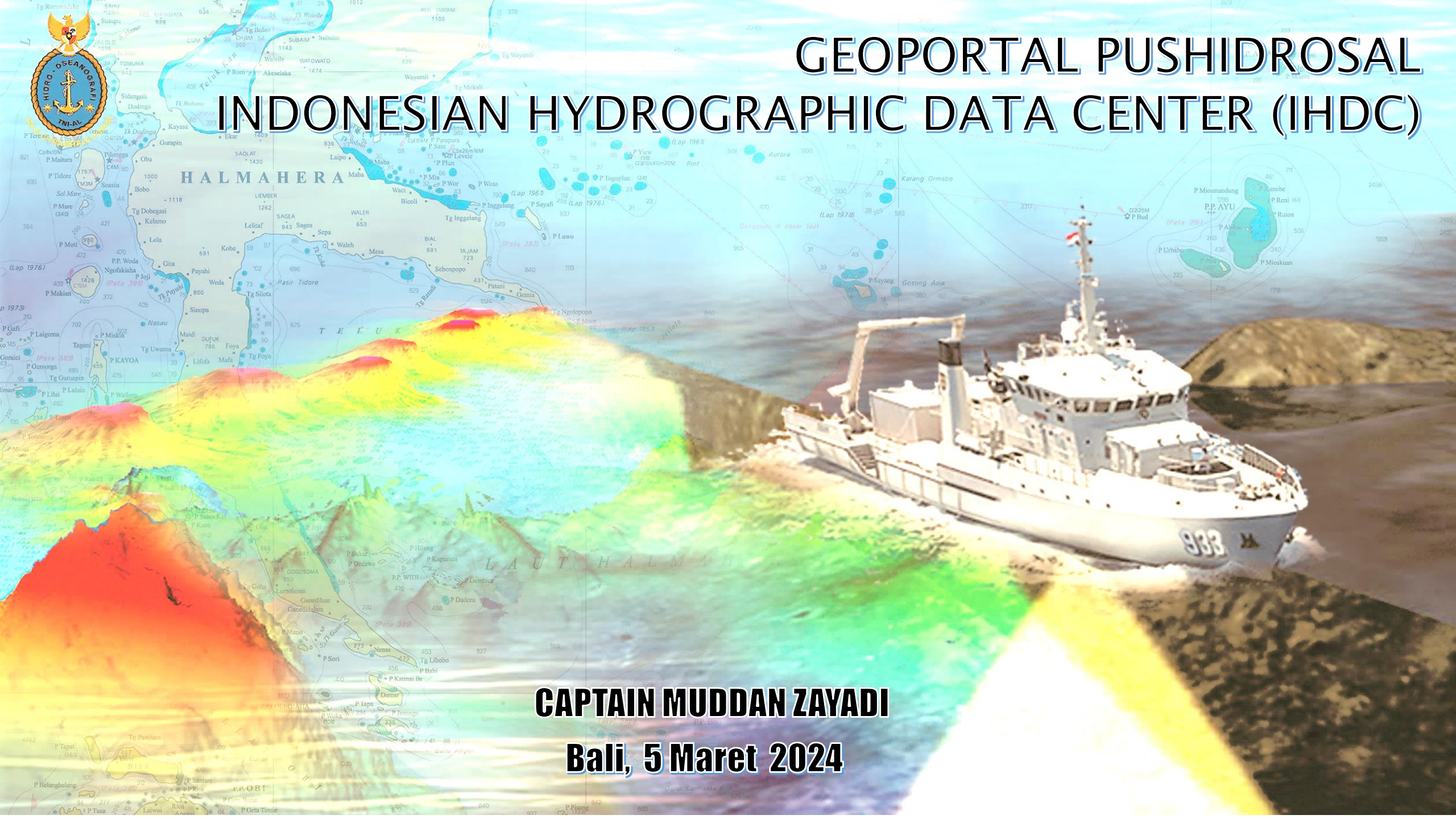




GEOPORTAL PUSHIDROSAL INDONESIAN HYDROGRAPHIC DATA CENTER (IHDC)



CAPTAIN MUDDAN ZAYADI
Bali, 5 Maret 2024



INDONESIAN NAVAL HYDRO-OCEANOGRAPHIC CENTER



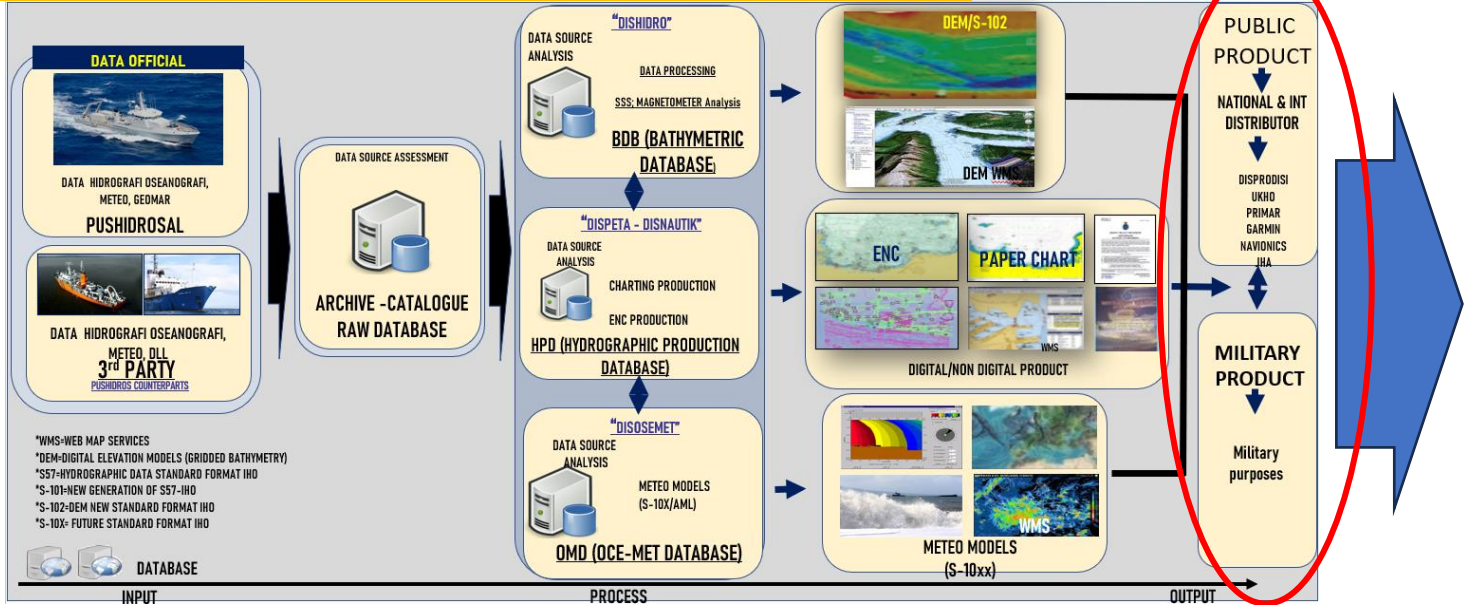
OUTLINE

- FLOWCHART OF HSI AND MSDI
- FAIR PRINCIPLES TO GEOPORTAL PUSHIDROSAL, INDONESIAN HYDROGRAPHIC DATA CENTER (IHDC)
- E-NAVIGATION CONTENT
- MARITIME SAFETY INFORMATION CONTENT
- FLOWCHART OF MARITIME SAFETY INFORMATION
- INTERACTIVE SAILING CHART CONTENT
- 3D BATHYMETRY CONTENT
- JALA CITRA EXPEDITION CONTENT
- UNDERSEA FEATURE NAMES OF INDONESIAN GAZETTEER CONTENT
- DEVELOPE CONTENT IHDC ON THE FUTURE

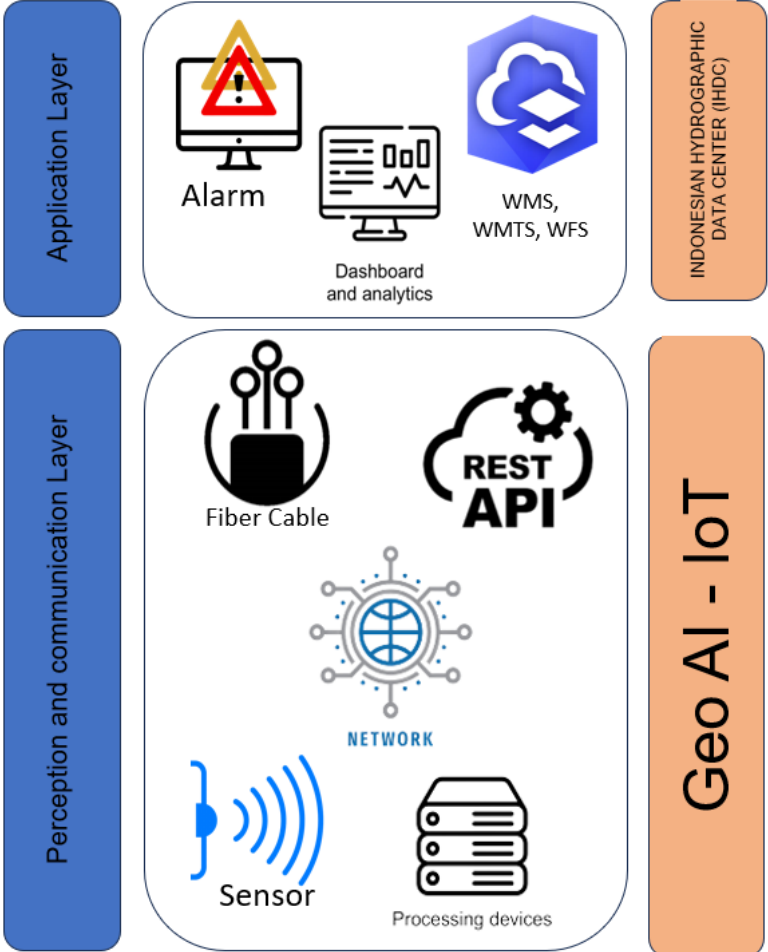


FLOWCHART OF HSI AND MSDI

Hydro Spatial Infrastructures

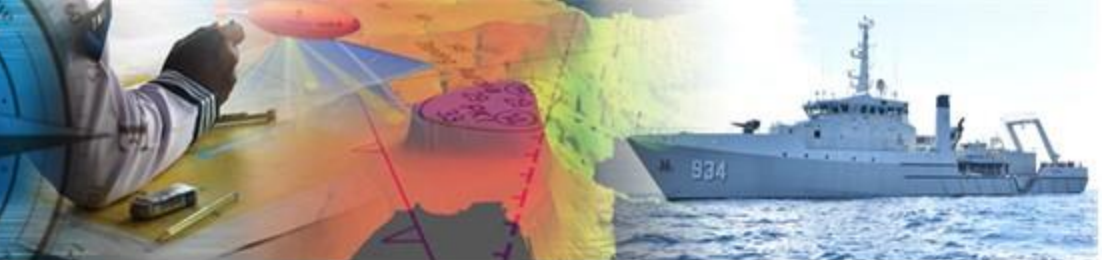


MSDI

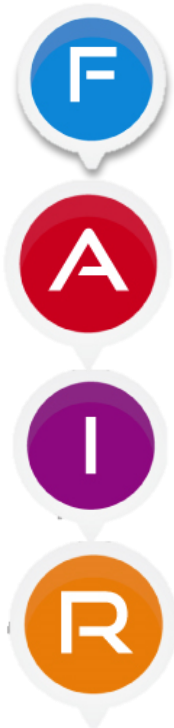




TENTARA NASIONAL INDONESIA ANGKATAN LAUT PUSAT HIDRO - OSEANOGRAFI



GEOPORTAL PUSHIDROSAL (IHDC)



Findable Magnifying glass icon	Persistent Identifiers (PIDs) ID icon	Rich metadata Document with 'm' icon	Indexed data repositories Database icon	PIDs in metadata ID with document icon
Accessible Hand pointing icon	Standard communications protocol Network icon	Open, free protocol Dollar sign with slash icon	Authentication, where necessary User and shield icon	Metadata is always available Infinity icon
Interoperable Gears icon	Vocabularies Tree diagram icon	Vocabularies are FAIR Magnifying glass and gears icon	Linked metadata Network of documents icon	
Reusable Recycling icon	Metadata have multiple attributes Document with arrows icon	Usage license Open lock icon	Provenance Flowchart icon	Community standards Group of people icon

PRINCIPLES

PUSHIDROS TNI AL

Indonesian Hydrographic Data Center (IHDC)

Public Purposes

- E-NAVIGATION
- MARITIME SAFETY INFORMATION
- 3D BATHYMETRY
- INTERACTIVE SAILING CHART
- UNDERSEA FEATURE NAMES OF INDONESIA GAZETEER
- EKSPEDISI JALA CITRA
- E-SHOP
- HYDROGRAPHIC EDUCATION



E-NAV

IHDC

BASEMAP LAYER INFORMATION

BATHYMETRY

Identify Results (1 of 13)

ID50262A

Feature:	SOUNDG
Description:	Sounding
Geometry:	Point
Usage:	Harbour
Compilation Scale:	12000

LNAM: ID158276959900249
 SCAMIN: 24000
 SORDAT: 20200227
 SORIND: ID.ID.graph, Peta 262A
 Depth: 12.3

[Zoom to](#) [Less Info](#)

PORT AUTHORITY

Identify Results (7 of 11)

ID50262A

Feature:	ACHARE
Description:	Anchorage area
Geometry:	Area
Usage:	Harbour
Compilation Scale:	12000

LNAM: ID158276960100172
 INFORM: Kapal Penumpang
 SCAMIN: 350000
 SORDAT: 20200227
 SORIND: ID.ID.graph, Peta 262A
 NINFORM: Passenger Vessel

[Zoom to](#) [Less Info](#)

AIDS TO NAVIGATION

Identify Results (1 of 19)

ID50262A

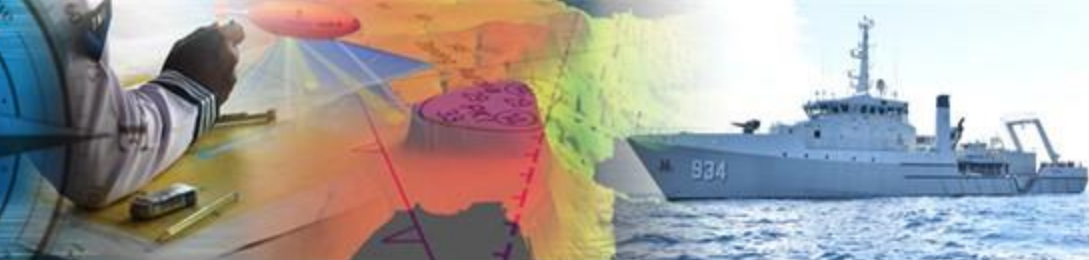
Feature:	BOYLAT
Description:	Buoy, lateral
Geometry:	Point
Usage:	Harbour
Compilation Scale:	12000

LNAM: ID158276960100141
 BOYSH: pillar
 CATLAM: starboard-hand lateral mark
 COLOUR: green
 CONRAD: radar conspicuous (has radar reflector)

[Zoom to](#) [Less Info](#)



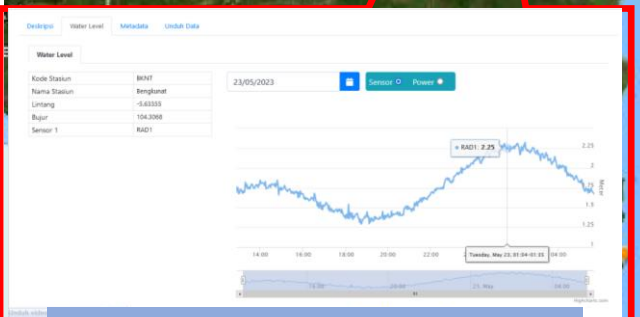
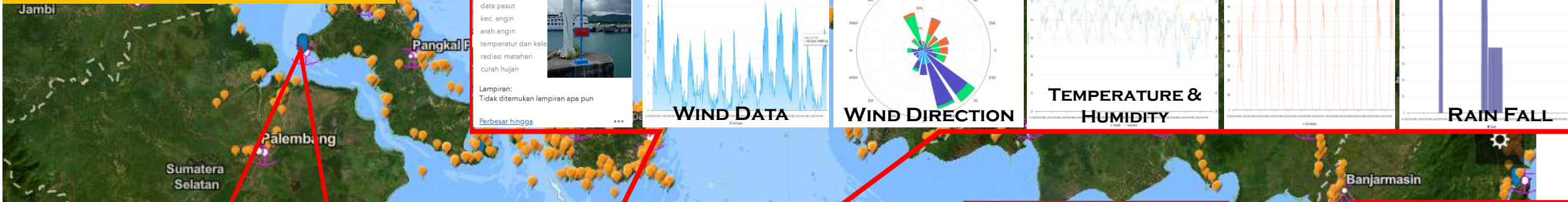
TENTARA NASIONAL INDONESIA ANGKATAN LAUT PUSAT HIDRO - OSEANOGRAFI



E-NAVIGASI (BASEMAP ENC)

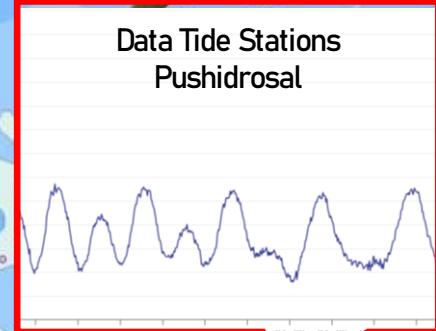
METEOROLOGI & OCEANOGRAPHY DATA REAL TIME

BASEMAP LAYER INFORMATION



Interoperability Data Tide Stations
Geospatial Information Agency

231 TIDES STATION collaborates at IHDC



(1 dari 2) Data Real Time BMKG

Tanggal	14 Apr 2023
Jam	16:55:44 WIB
DateTime_	Apr 14 2023 9:55AM
Coordinates	-6.29,111.92
Lintang	6.29 LS
Bujur	111.92 BT
Magnitude	6.6
Kedalaman	632 km
Wilayah	Pusat gempa berada di laut 68 km BaratLaut Tuban
Potensi	
Dirasakan	V Kuta, IV Karangates, IV
Perbesar hingga	More Info

National Team Of
Standardization Of Land
Gazetirs

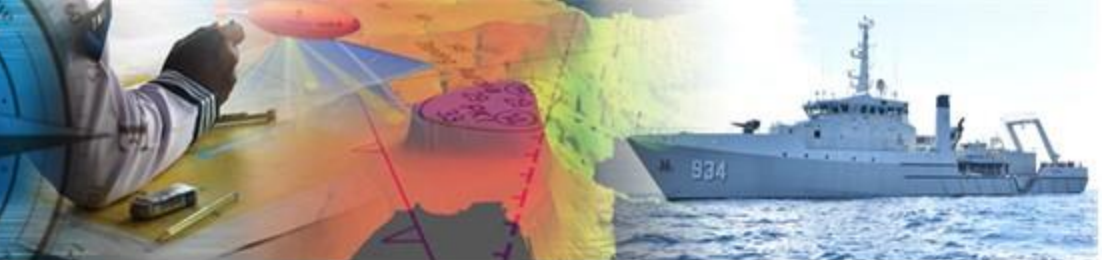
-5,744 Derajat

60mi

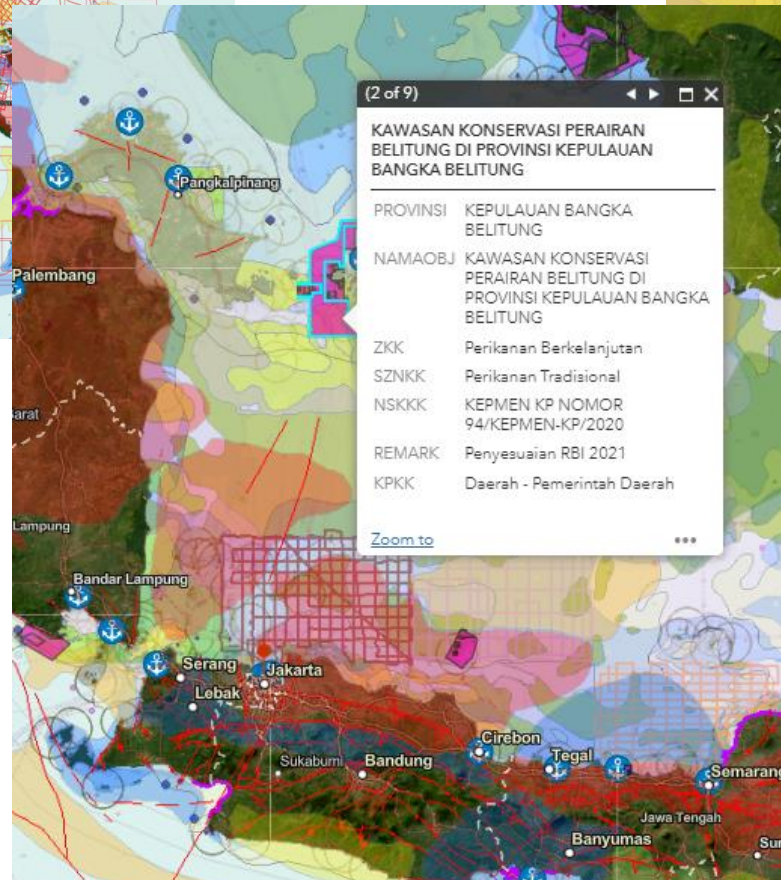
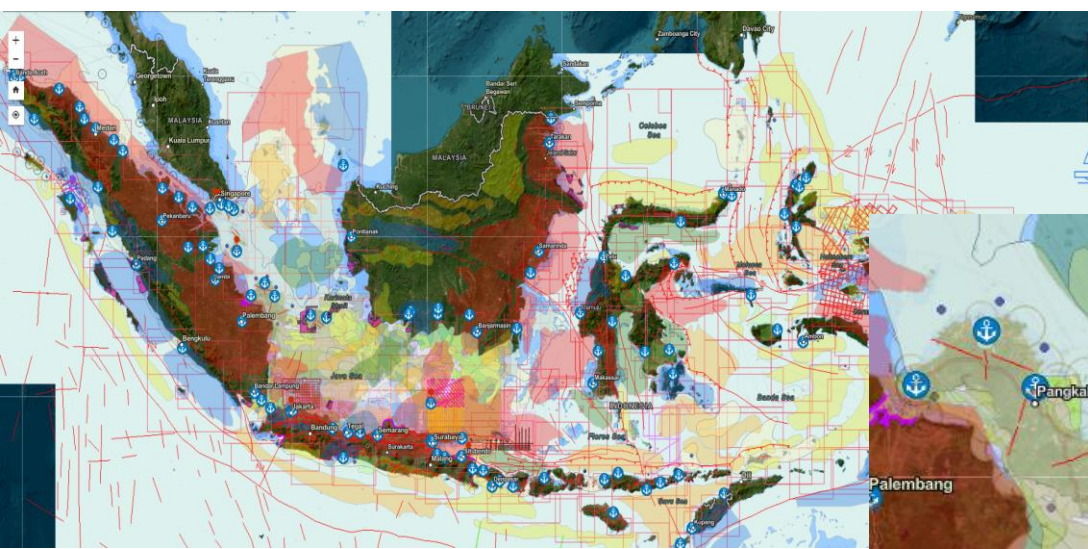




TENTARA NASIONAL INDONESIA ANGKATAN LAUT PUSAT HIDRO - OSEANOGRAFI



Interoperability Data With Ministry of Energy and Mineral Resources of the Republic of Indonesia

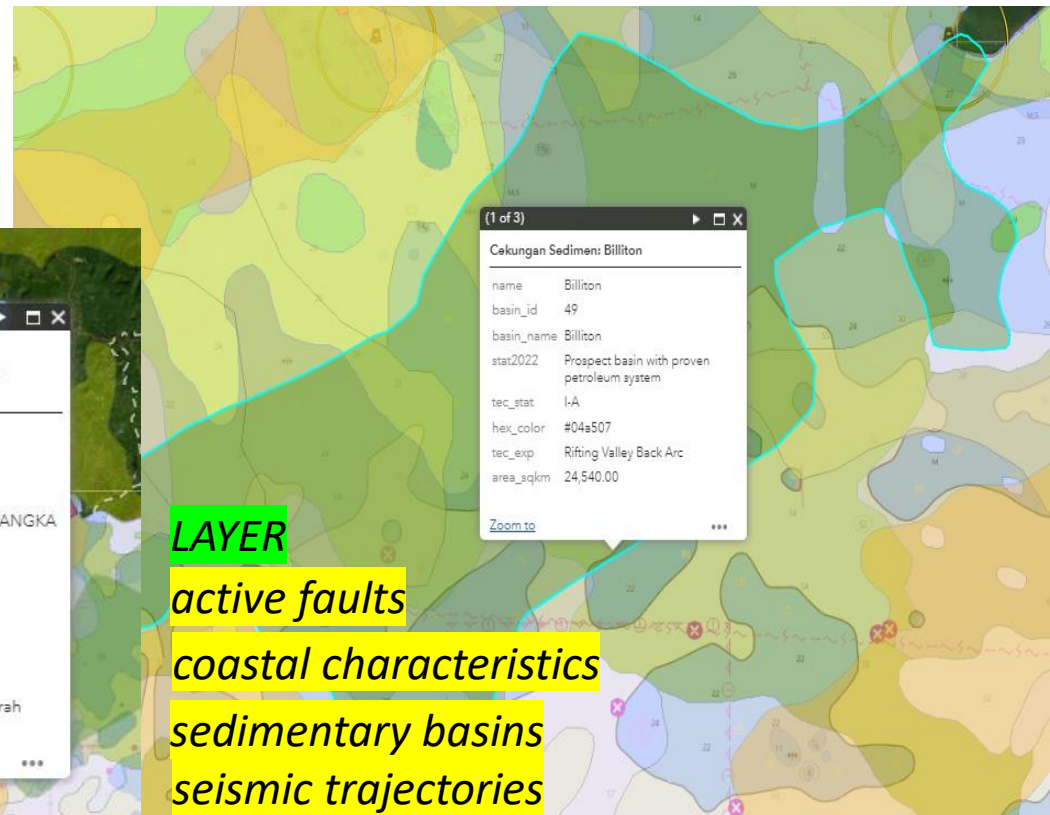


(2 of 9)

KAWASAN KONSERVASI PERAIRAN BELITUNG DI PROVINSI KEPULAUAN BANGKA BELITUNG

PROVINSI	KEPULAUAN BANGKA BELITUNG
NAMA OBJ	KAWASAN KONSERVASI PERAIRAN BELITUNG DI PROVINSI KEPULAUAN BANGKA BELITUNG
ZKK	Perikanan Berkelanjutan
SZSKK	Perikanan Tradisional
NSKKK	KEPMEN KP NOMOR 94/KEPMEN-KP/2020
REMARK	Penyesuaian RBI 2021
KPKK	Daerah - Pemerintah Daerah

[Zoom to](#)

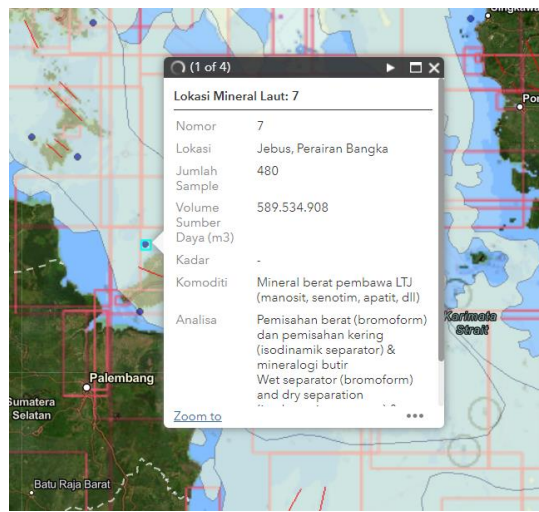


(1 of 3)

Cekungan Sedimen: Billiton

name	Billiton
basin_id	49
basin_name	Billiton
stat2022	Prospect basin with proven petroleum system
tec_stat	I-A
hex_color	#04a507
tec_exp	Rifting Valley Back Arc
area_sqkm	24,540.00

[Zoom to](#)



(1 of 4)

Lokasi Mineral Laut: 7

Nomor	7
Lokasi	Jebus, Perairan Bangka
Jumlah Sample	480
Volume	589.534.908
Sumber Daya (m3)	-
Kadar	-
Komoditi	Mineral berat pembawa LTJ (manosit, senotim, apatit, dll)
Analisa	Pemisahan berat (bromoform) dan pemisahan kering (isodinamik separator) & mineralogi butir Wet separator (bromoform) and dry separation

[Zoom to](#)

LAYER

active faults

coastal characteristics

sedimentary basins

seismic trajectories

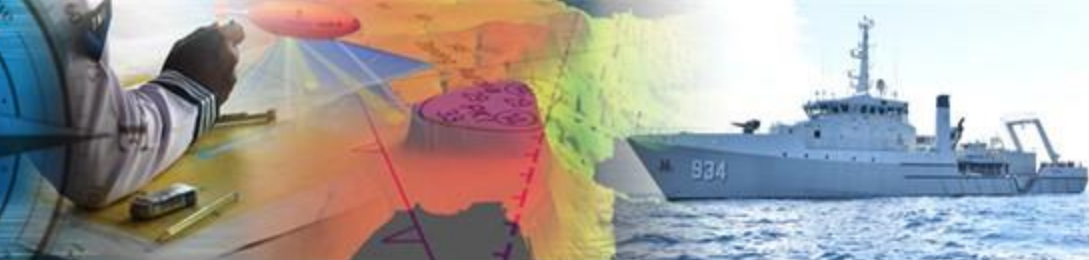
distribution of marine gravity cores

distribution of seabed surface sediments

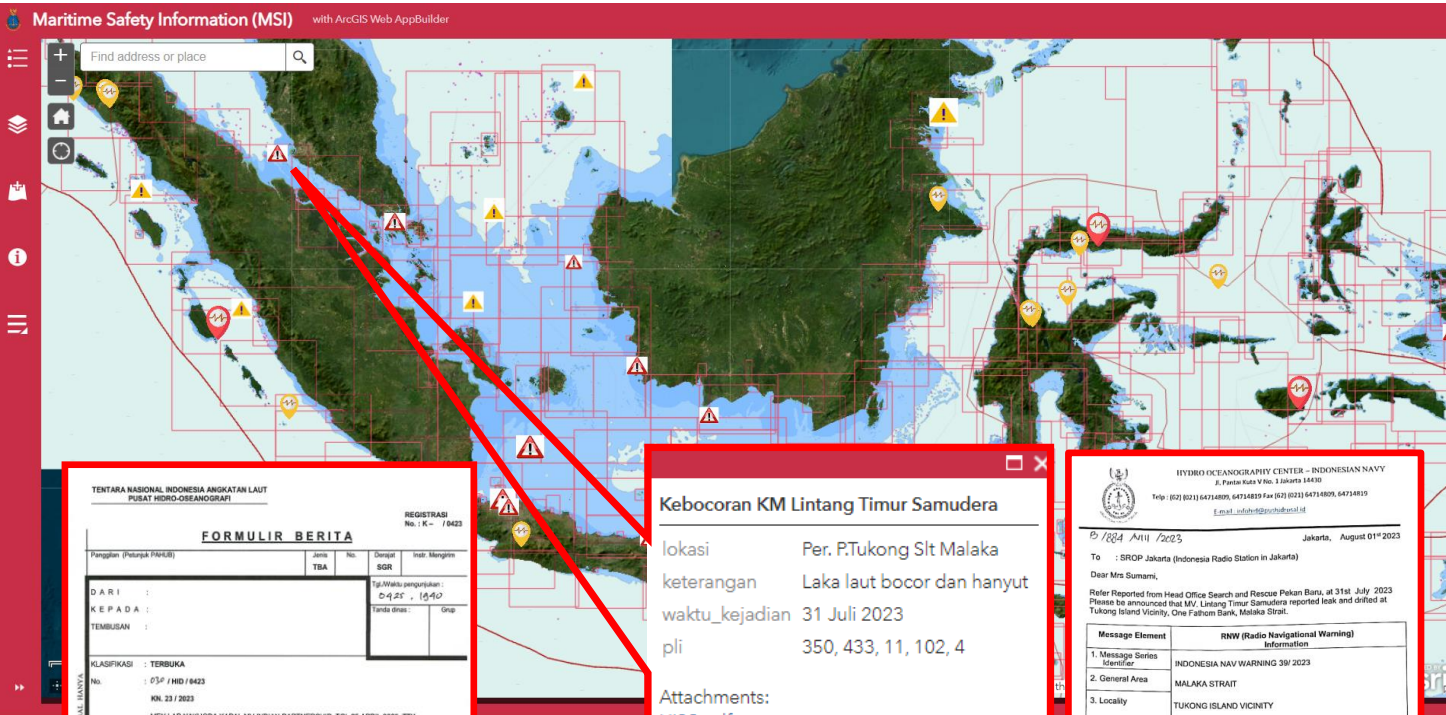
potential marine minerals



TENTARA NASIONAL INDONESIA ANGKATAN LAUT PUSAT HIDRO - OSEANOGRAFI



MARITIME SAFETY INFORMATION (MSI)



TENTARA NASIONAL INDONESIA ANGKATAN LAUT
PUSAT HIDRO-OSEANOGRAFI

REGISTRASI No. : K - 70423

FORMULIR BERITA

Panggilan (Panggilan PANJIS) : Jema No. : Tanggal Israr Mengirim :
TBA TBA SGR

D A R I :
K E P A D A :
T E M B U S A N :

KLASIFIKASI : TERBUKA
No. : 034 / HID / 0423
Kk. 23 / 2023

MEN LAP MAHKODA KAPAL MV INDIAN PARTNERSHIP TGL 25 APRIL 2023 TTK
AAA TTK SESUAI MEN KMA MV INDIAN PARTNERSHIP MENGALAMI KEBOCORAN DI PERAIRAN P.MISDOL KMA 4.2 NM TBMUR PP-DIPENTA P. MISDOL DNG POS 01°59'07"S - 130°32'16"E TTK
BBB TTK TSB AAA PETA LAUT INDONESIA NO.145 KMA 512 KMA 400 KMA 210 KMA 186 KMA 211 TTK
CCG TTK ADAR DIGUNAKAN SESUAI PEDOMAN BAGI UNSUR-UNSUR YANG MELAKSI GIAT OPS
DIDITARIH RAN TSB TTK
DDD TTK LUMP DAN PELAKSI TTK

Tel. / faksimili / sambungan : 0421 1910

PENYIRIM :
Nama : DIDIK PRIHARTONO,S.T
Pangkat / Jab. : MAYOR LAUT (T) NRP 18208P
PADIS PUSHDROSAL

Kebocoran KM Lintang Timur Sumatera

lokasi Per. P.Tukong Slt Malaka
keterangan Laka laut bocor dan hanyut
waktu_kejadian 31 Juli 2023
pli 350, 433, 11, 102, 4

Attachments:
[HI39.pdf](#)
[KN36.pdf](#)
[Gambar KM Lintang Timur Sumatera.jpeg](#)
[Posisi KM Lintang Timur Sumatera.jpeg](#)
[Prediksi Angin Selat Malaka 1 s.d. 4 Agustus 2023.gif](#)
[Prediksi Arus Selat Malaka 1 s.d. 4 Agustus 2023.gif](#)
[Prediksi Gelombang Selat Malaka 1 s.d. 4 Agustus 2023.gif](#)

[Zoom to](#)

HYDRO OCEANOGRAPHY CENTER - INDOONESIAN NAVY
J. Fatah Saif No. 3 Jember 54100
Telp. (021) 64714809, 64714839 Fax (021) 64714809, 64714839
E-mail: otuh@hydrocenter.id

17084 Anu / 2023 Jakarta, August 01* 2023

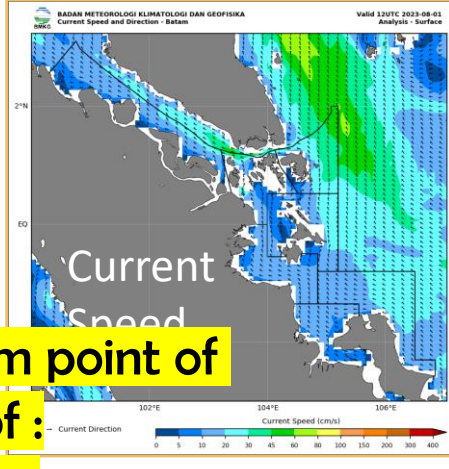
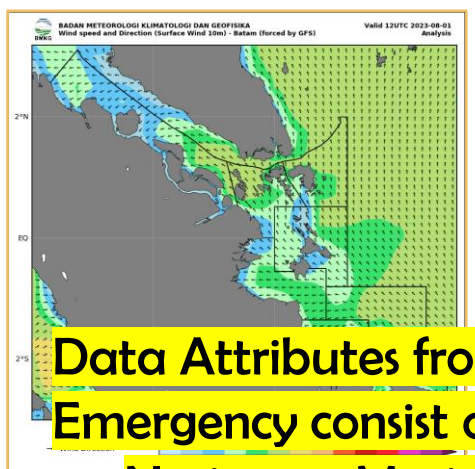
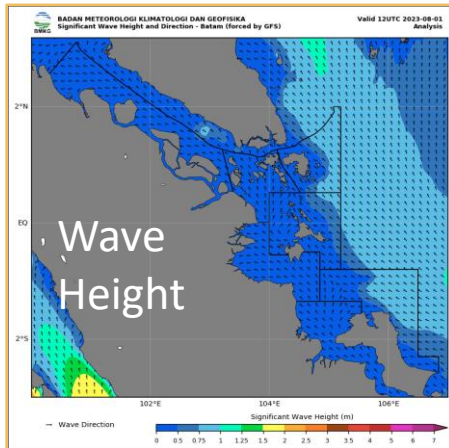
To : SRPOP Jakarta (Indonesia Radio Station in Jakarta)

Dear Mrs Sumani,

Refer Reported from Head Office Search and Rescue Pekanbaru, at 31st July 2023
Please be announced that MV Lintang Timur Sumatera reported leak and drifted at Tukong Island Vicinity, One Falmur Bank, Malaka Strait.

Message Element	RNW (Radio Navigational Warning) Information
1. Message Series Identifier	INDONESIA NAV WARNING 39* 2023
2. General Area	MALAKA STRAIT
3. Locality	TUKONG ISLAND VICINITY
4. Chart Number	INDO CHART AFF Nr. 350, 433, 11, 102, 4
5. Key Subject	AN ACCIDENT LEAK AND DRIFTED VESSEL COORDINATE 100°52'41.52"E - 2°56'04.4"N
6. Geographical Position	19 NM NORTHEAST OF JEMUR ISLAND
7. Amplifying remarks	VESSEL ARE REQUEST TO NAVIGATE WITH CAUTION IN THIS AREA
8. Cancellation details	-

On Behalf of Chief Hydrographer
Deputy
Hydrographic Officer
GIBRAN RANGGANTO



Data Attributes from point of Emergency consist of :

- Notices to Marines
- Oceanography Model
- Meteorology Model



INDONESIAN NAVAL HYDRO-OCEANOGRAPHIC CENTER



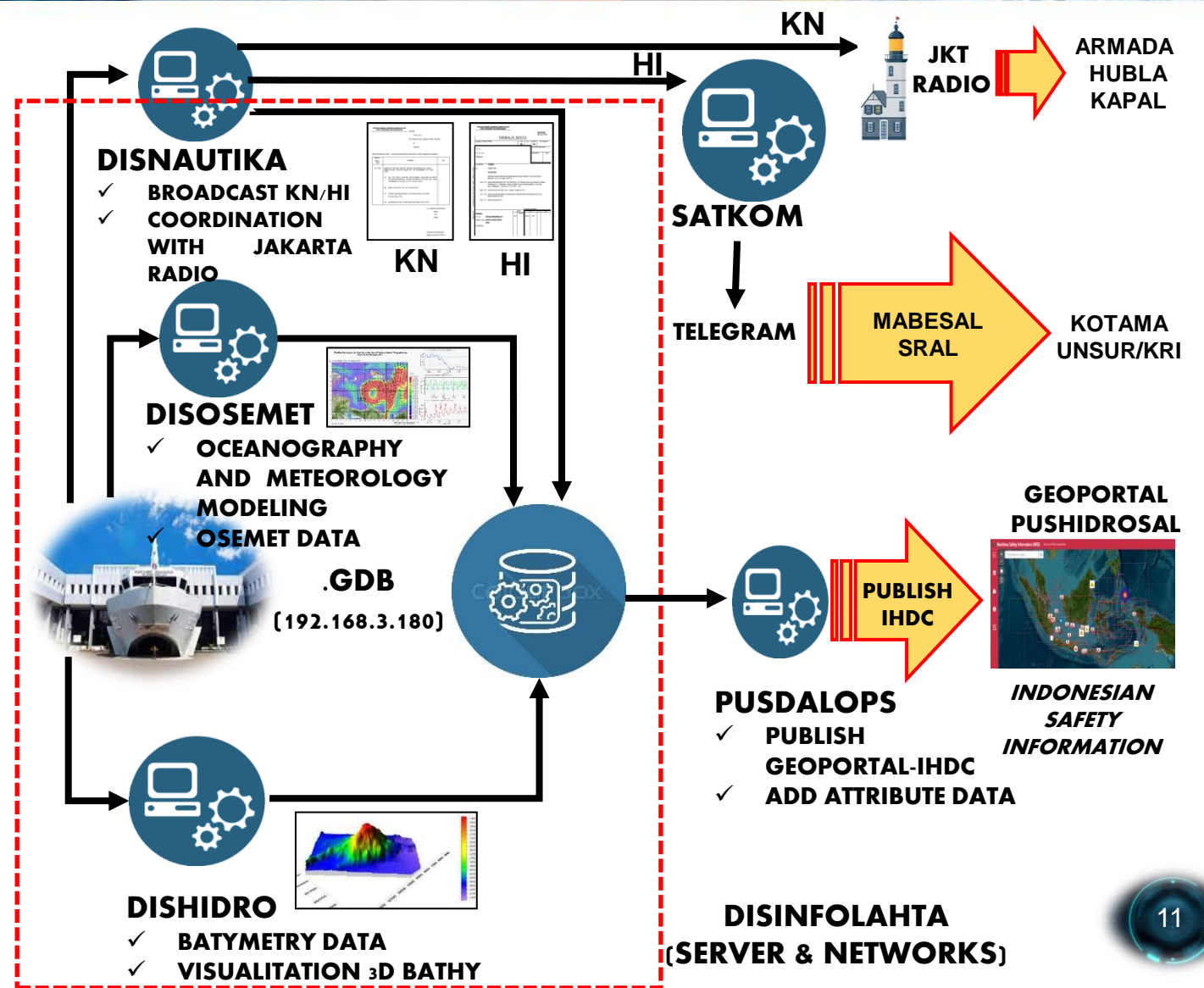
FLOW CHART OF MARITIME SAFETY INFORMATION (MSI)



NAVTEX

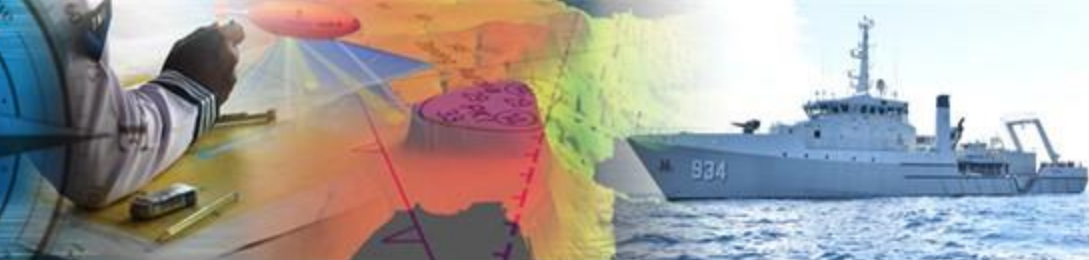
NEWS FROM AGENCY / INSTITUTION / MEDIA TV

COASTAL RADIO STATION





TENTARA NASIONAL INDONESIA ANGKATAN LAUT PUSAT HIDRO - OSEANOGRAFI



INTERACTIVE SAILING CHART

Sailing | Map



Number Of Nautical Chart

MAIN MENU

Sailing Route

Line

Polyline

Freehand Polyline

Clear Graphic

Chart Sheet Table

Buy

PUSHIDROS TNI AL Interactive Sailing Map

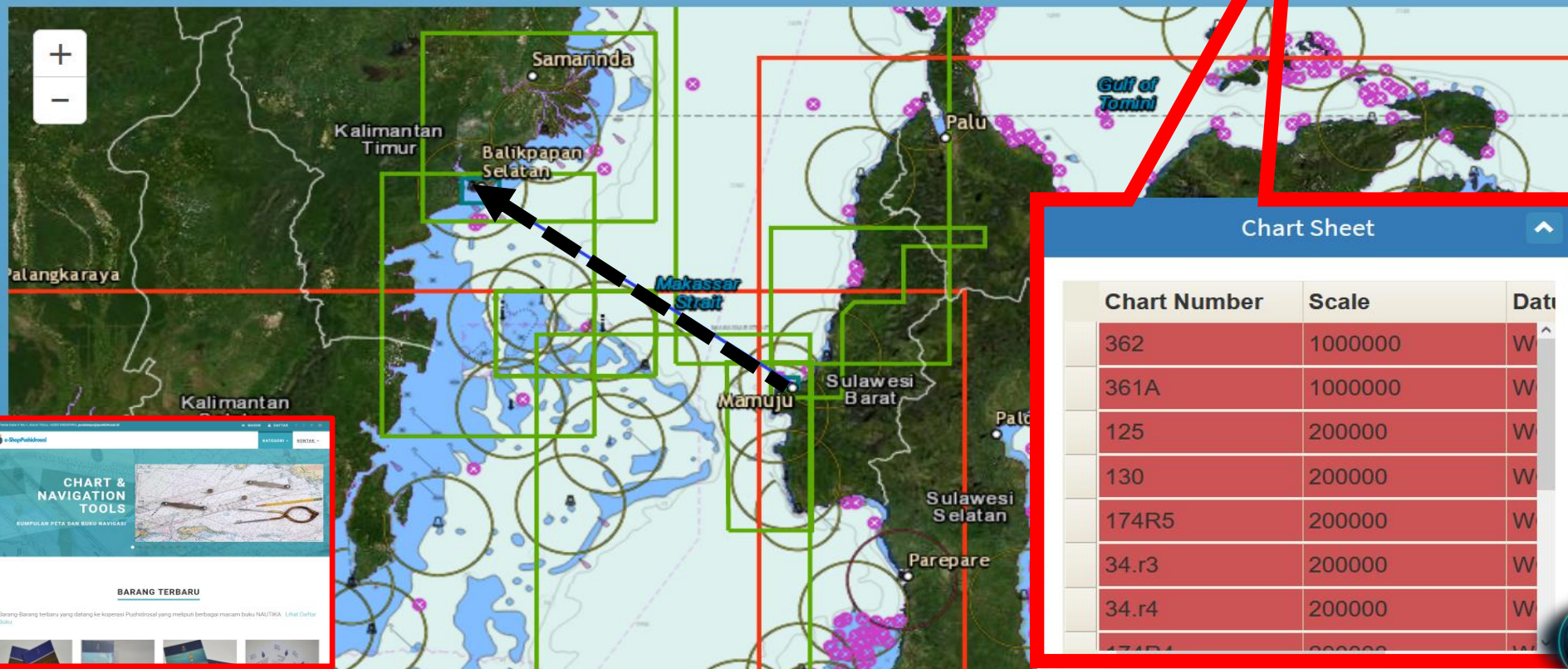
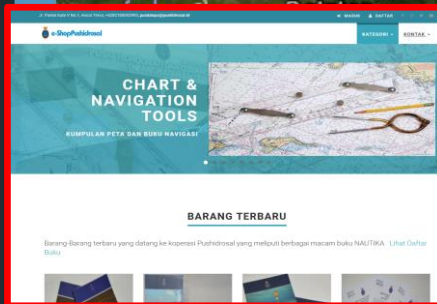


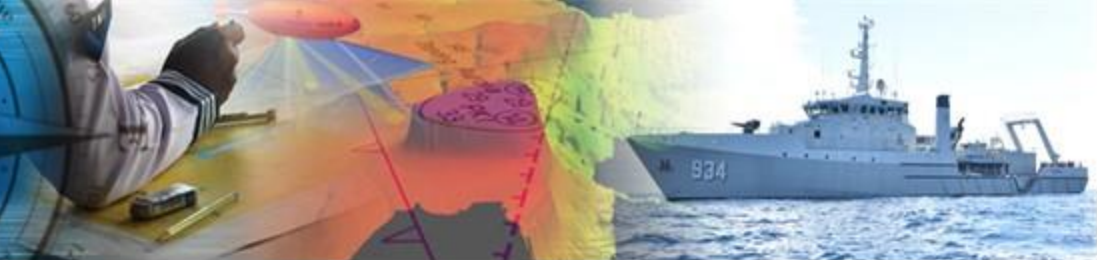
Chart Sheet

Chart Number	Scale	Date
362	1000000	W
361A	1000000	W
125	200000	W
130	200000	W
174R5	200000	W
34.r3	200000	W
34.r4	200000	W
174R4	200000	W





TENTARA NASIONAL INDONESIA ANGKATAN LAUT PUSAT HIDRO - OSEANOGRAFI

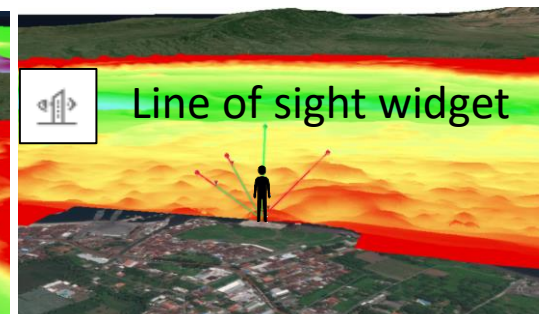
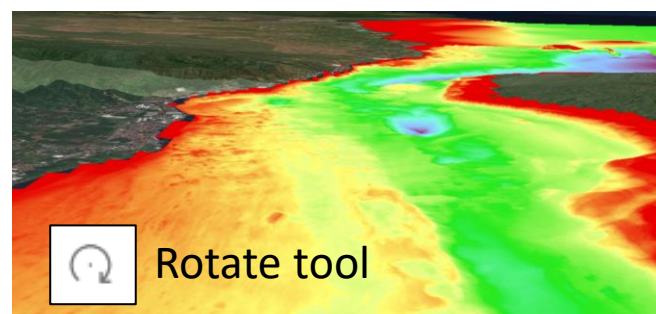
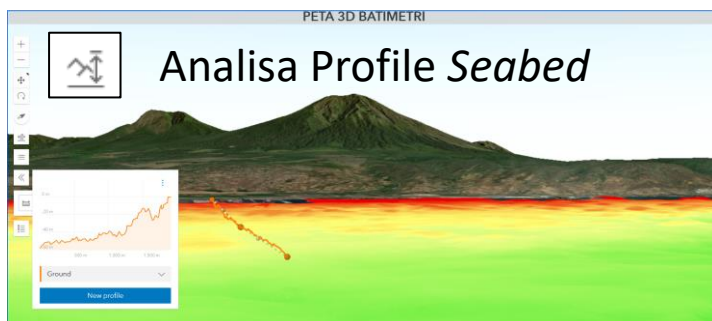
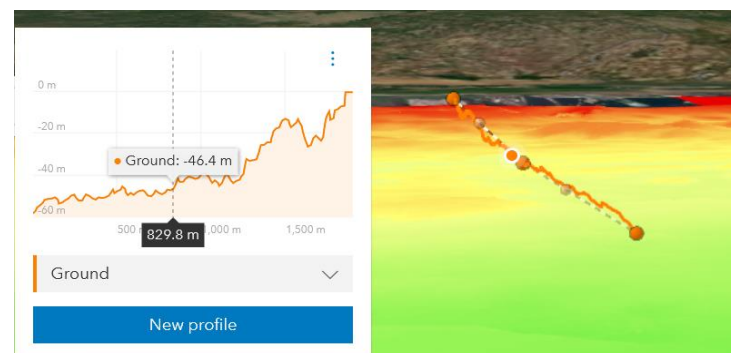
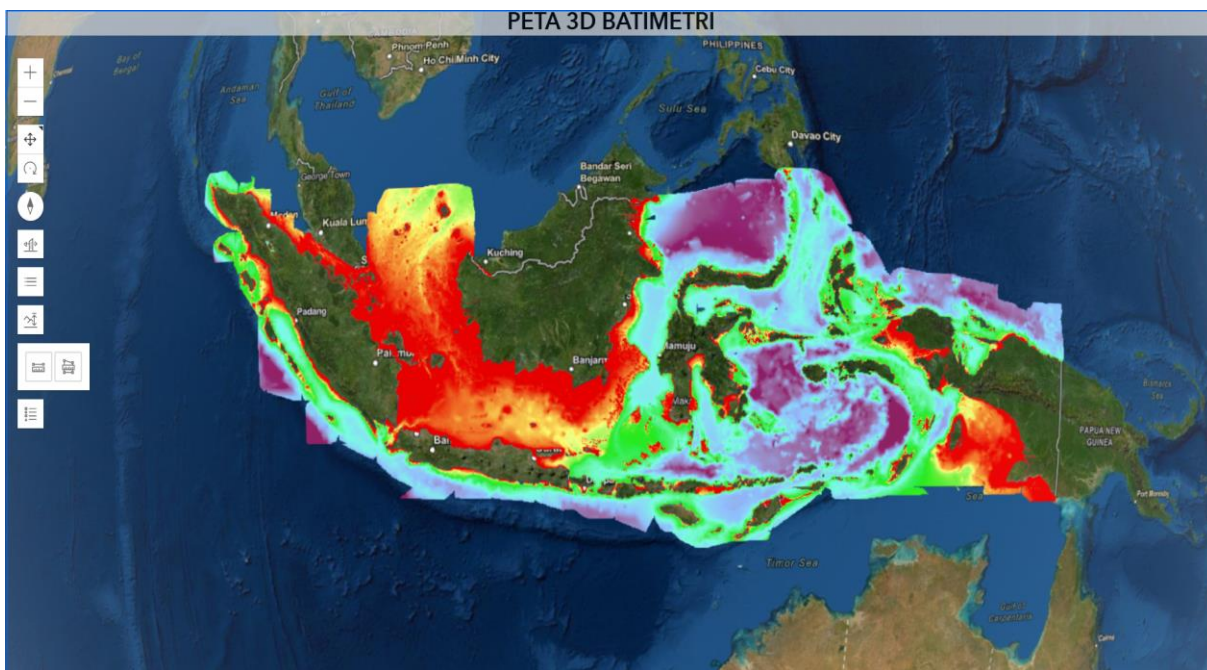


3D Bathymetry

As a support for preliminary analysis of subsea bottom profile, for the support of water bottom profile information (for example, advanced analysis of anchoring point of lading cable at sea, with sea bottom profile up to landing to Beach Main Hole (BMH).

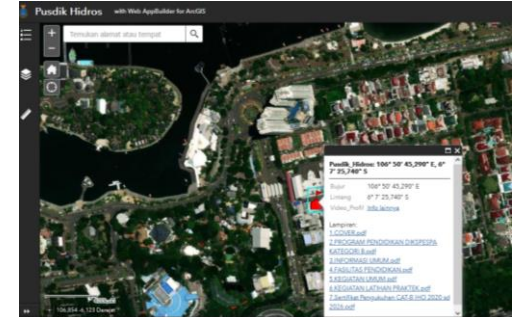
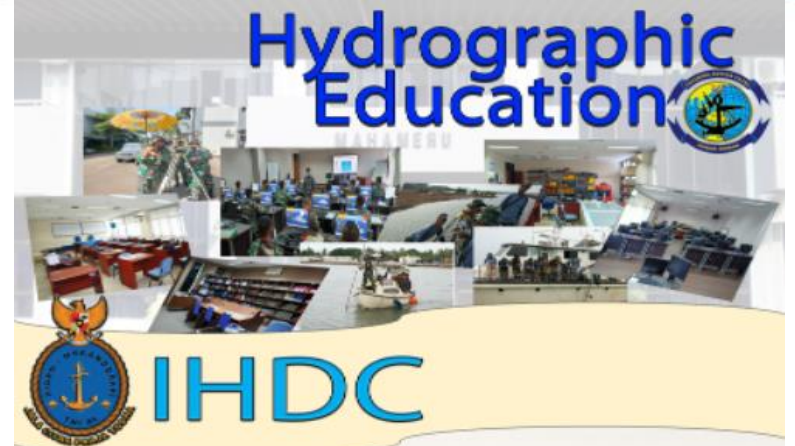
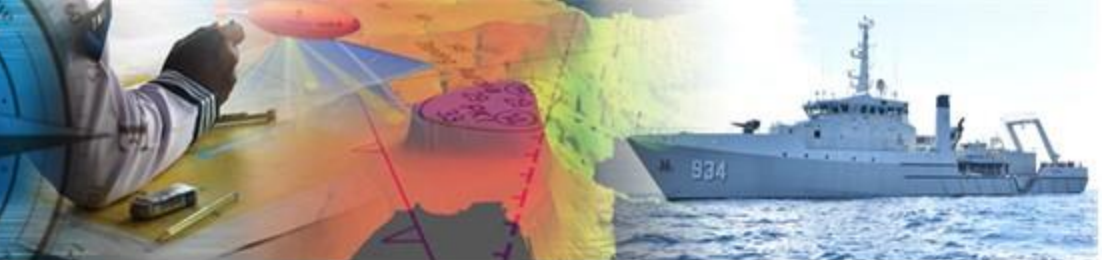
TOOL BARS 3D Bathymetry

- Zoom in
- Zoom out
- Pan tool
- Rotate tool
- Compass
- Line of sight widget
- Expand (Layer)
- Analisa Profile Seabed
- Measurement Distance between 2 point
- Measurement Area
- Profil Bathymetry



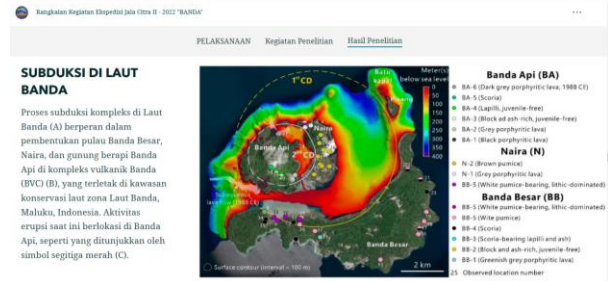


TENTARA NASIONAL INDONESIA ANGKATAN LAUT PUSAT HIDRO - OSEANOGRAFI

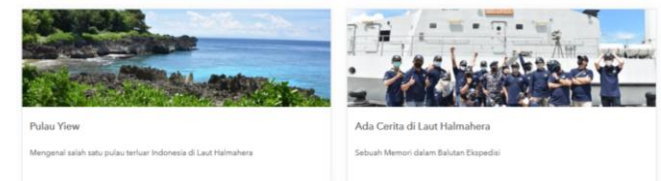


PROGRAM PENDIDIKAN DIKSPESA KATEGORI B

No.	Subject	Total	Lectures	Tutorials	Practical	Self-Guided
S-SB IHO Standard Subjects						
A. Basic Subject						
1.	Mathematics, Statistics and Theory of Error	30	15/3	5/1	0/0	5/1
2.	Communication and Information Technology	30	6/2	3/2	10/3	3/1
3.	Physics	20	11/2	2/1	0/0	3/1
4.	Earth Sciences	15	7/2	2/1	0/0	2/1
5.	Nautical Science	40	11/2	5/2	13/1	5/1
6.	Meteorology	20	5/2	2/1	5/1	3/1
Total of Basic Subjects		155	54/13	19/8	29/5	21/6
B. Essential Subject						
7.	Acoustic Theory	20	8/2	2/2	0/0	4/2
8.	Single Beam Systems & Side Scan Sonar	25	6/2	3/2	5/2	4/1
9.	Swath Systems	40	10/2	4/2	10/3	7/2
10.	INAR	20	4/2	3/1	4/2	4/1

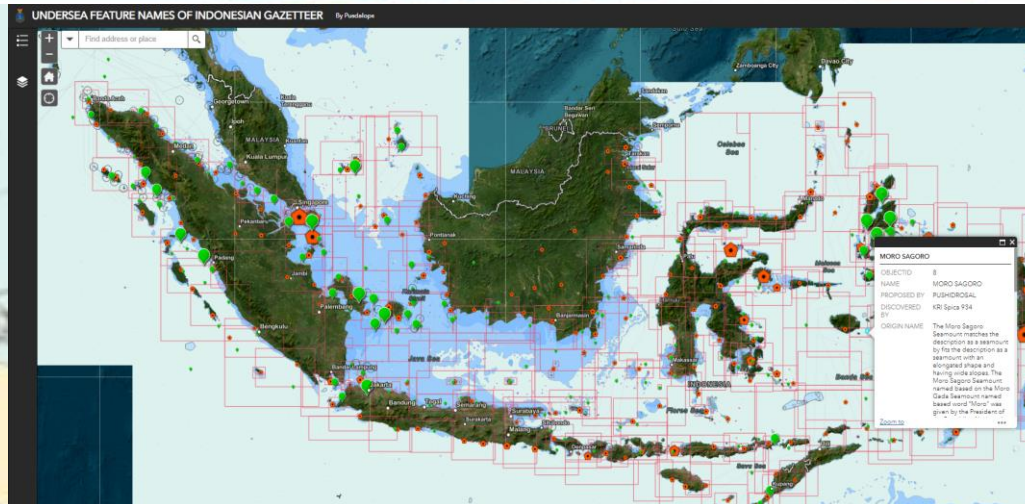
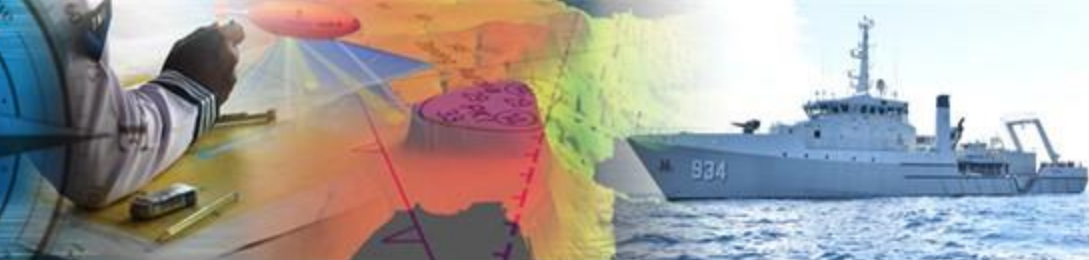


KEGIATAN LATIHAN PRAKTEK (LATEK) SISWA

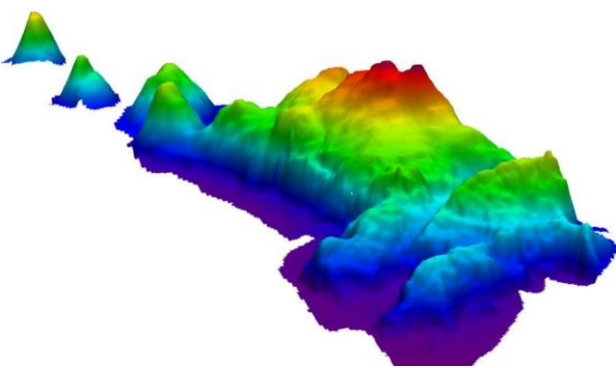
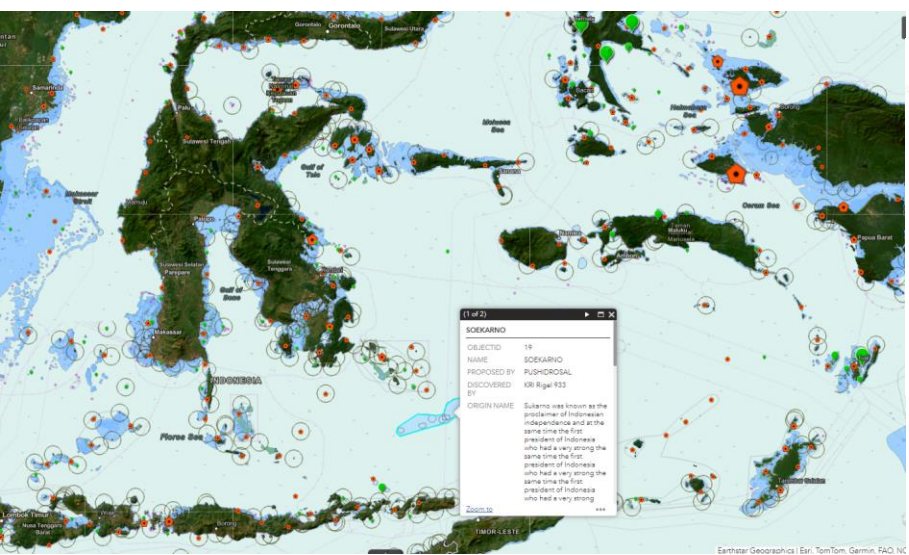
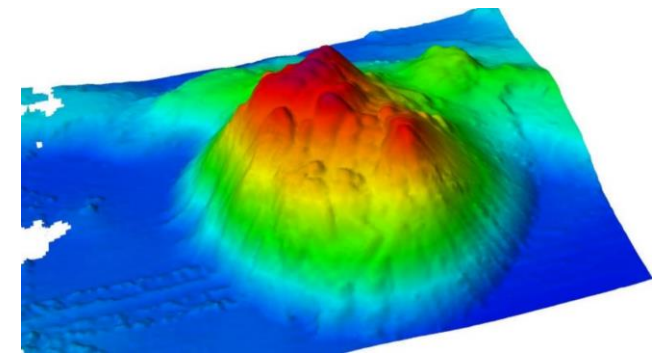




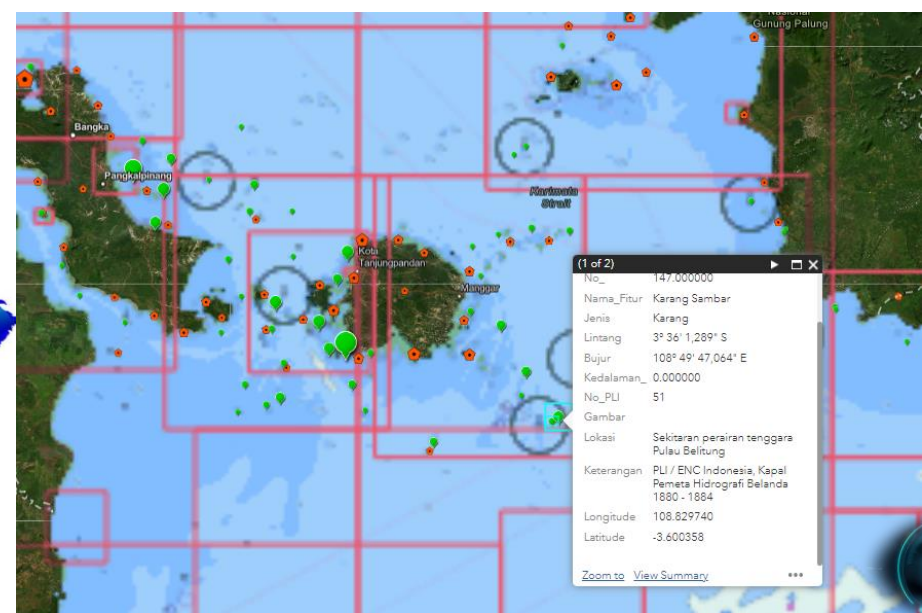
TENTARA NASIONAL INDONESIA ANGKATAN LAUT PUSAT HIDRO - OSEANOGRAFI



Moro Sagoro Seamount



Soekarno Seamount





INDONESIAN NAVAL HYDRO-OCEANOGRAPHIC CENTER

STATIC DATA

NATIONAL TEAM OF STANDARDIZATION OF LAND GAZETIRS

Pulau Doangdoang Lompo

UPDATED_DA	2022-01-10 14:46:14.973085
STATPUB	Terbit
ID_STATPEM	5.000000
STATPEM	Penetapan
STATUS	Terima
JENIS_TOPO	Titik
ZONAUTM	50S
KLSTPN	Toponim Relief
NAMLOK	Pulau
NAMSPE	Doangdoang Lompo
NAMMAP	Pulau Doangdoang Lompo
KOORDINAT1	05°22'56.00" S 117°56'13.40" T

Zoom to

NATIONAL TEAM OF UNDER WATER PIPE AND CABLE

Jalur Pipa dan atau Kabel Bawah Laut

- PIPA_GABUNGAN
- Jalur_Koridor_SKKL_Gab

Jalur Koridor SKKL: IGG

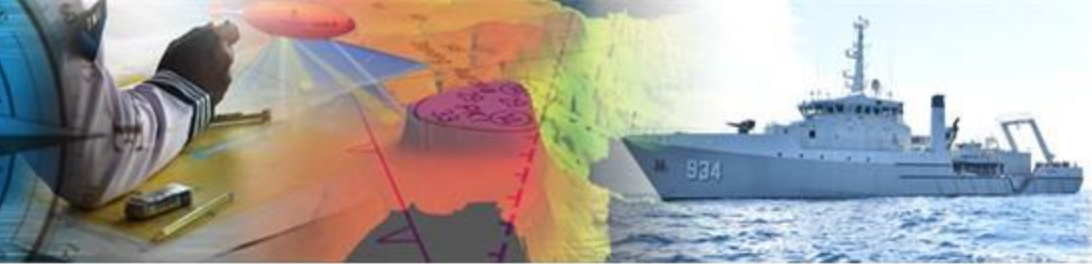
NAMAKABEL	IGG
PT	TELEKOMUNIKASI INDONESIA
ASAL	BU 3
TUJUAN	BU 4

Timnas Pipa Kabel 2022

16



TENTARA NASIONAL INDONESIA ANGKATAN LAUT PUSAT HIDRO - OSEANOGRAFI

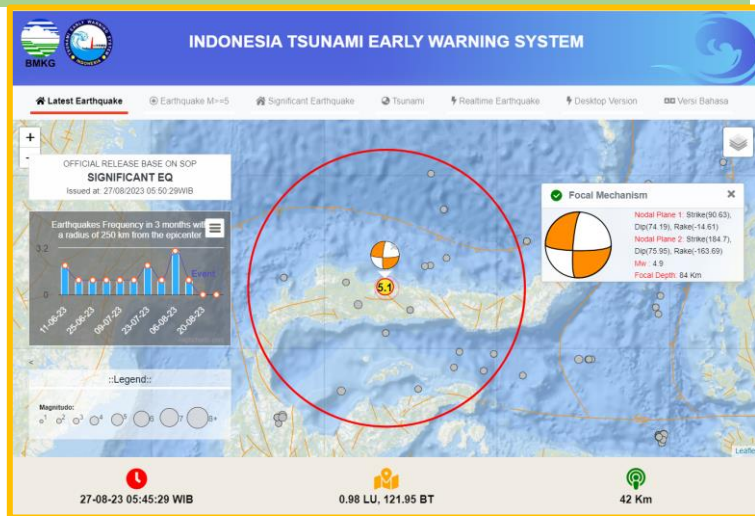


Develop Content IHDC On The Future

INTEROPERABILITY WITH NATIONAL AGENCY

METEOROLOGICAL, CLIMATOLOGICAL AND GEOPHYSICAL AGENCY

REAL TIME DATA (SENSOR)

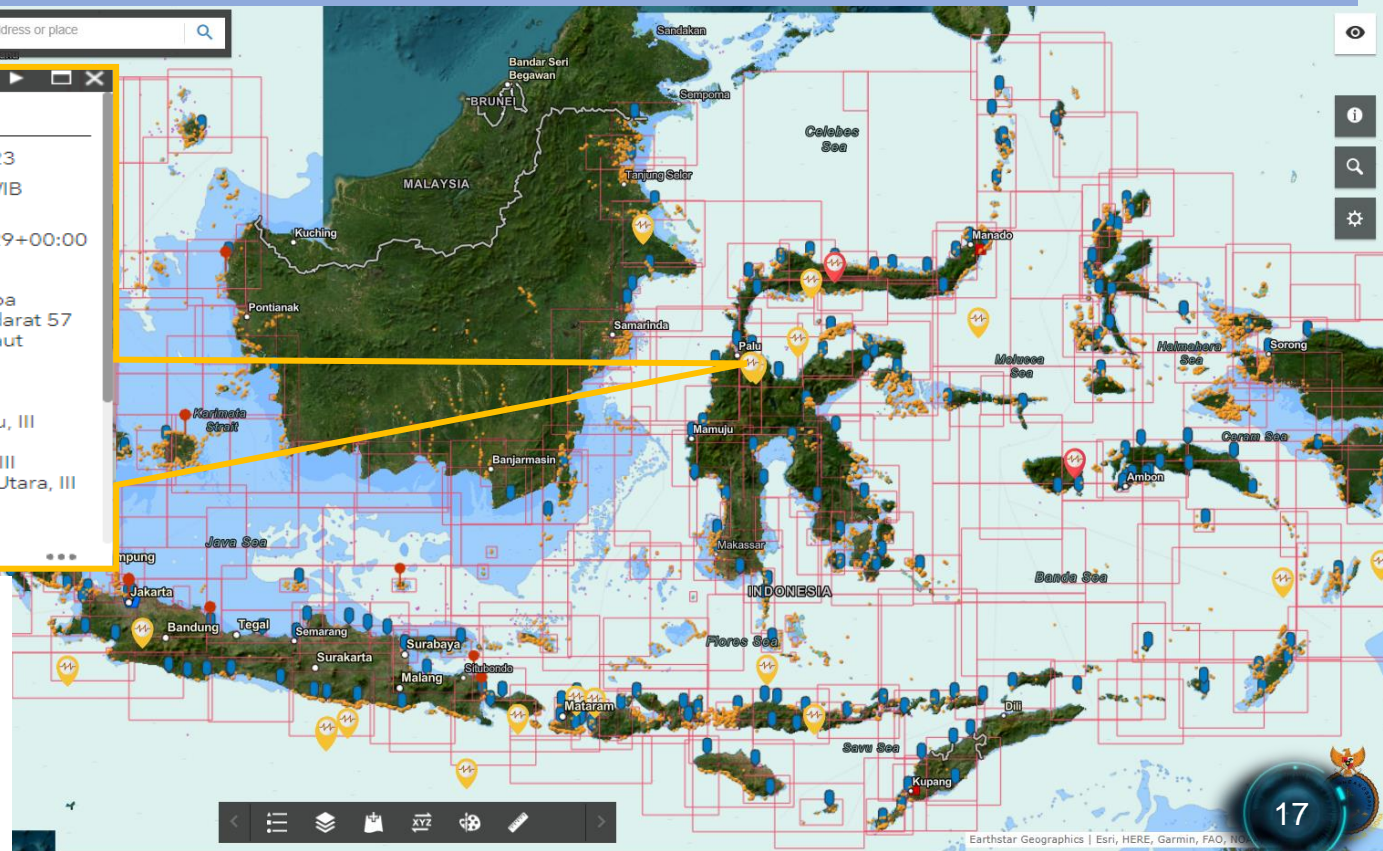


e-Navigasi PUSHIDROS TNI AL

Gempa Dirasakan: 27 Agu 2023

TANGGAL	27 Agu 2023
JAM	05:45:29 WIB
DATETIME	2023-08-26T22:45:29+00:00
KEDALAMAN	42 km
WILAYAH	Pusat gempa berada di darat 57 km TimurLaut Pohuwato
POTENSI DIRASAKAN	III Pohuwato, III Kabupaten Gorontalo, III Gorontalo Utara, III Kabupaten Boalemo

Zoom to

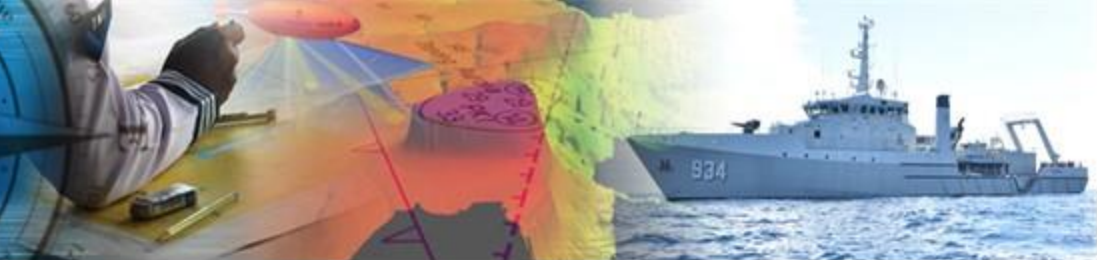


Data Attributes from point of Earth Quakes consist of :

- Potential Tsunami
- Coverage area of Earthquake
- Detail Earthquake information, such as date, significant EQ, focal depth



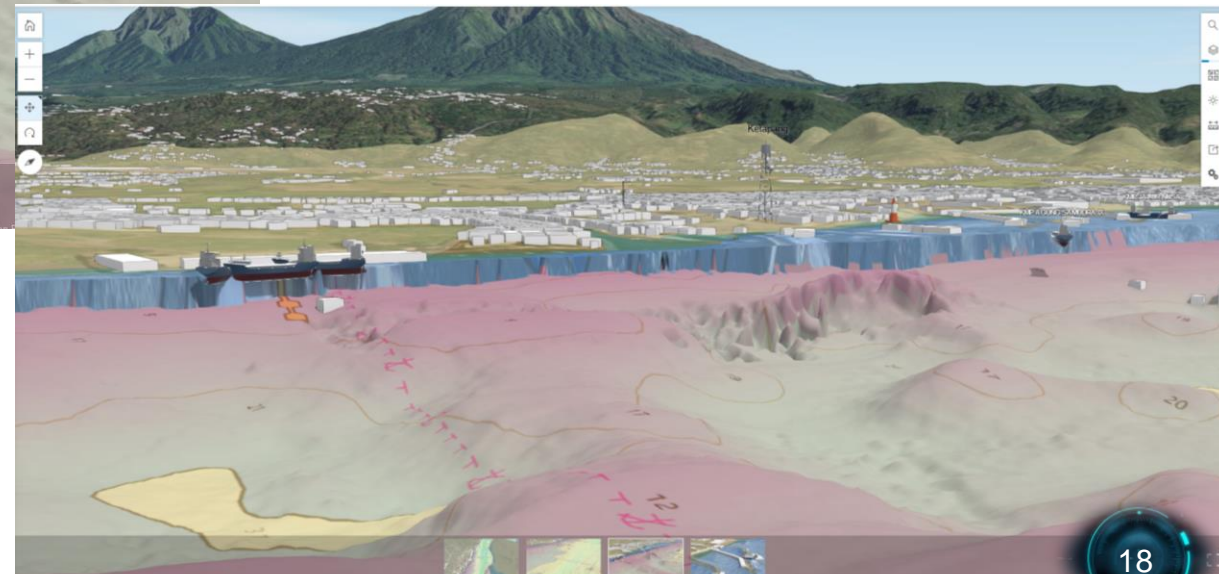
TENTARA NASIONAL INDONESIA ANGKATAN LAUT PUSAT HIDRO - OSEANOGRAFI



Develop Content IHDC On The Future

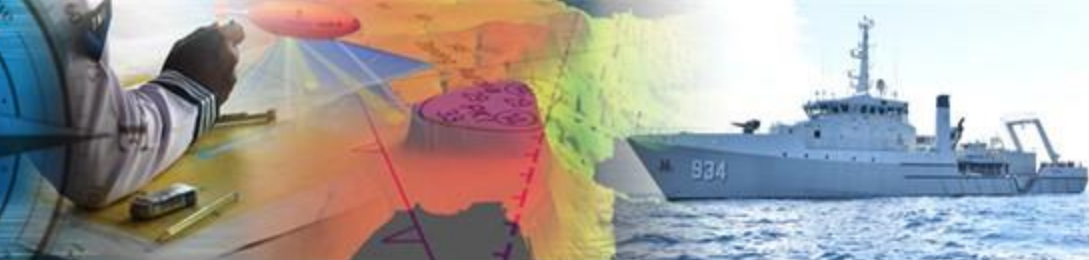
IHDC to S1xx ERA

- AID TO NAVIGATION
- VTS
- COASTAL RADIO
- LAND INFORMATION
- PORT INFORMATION
- 3D BATHYMETRY

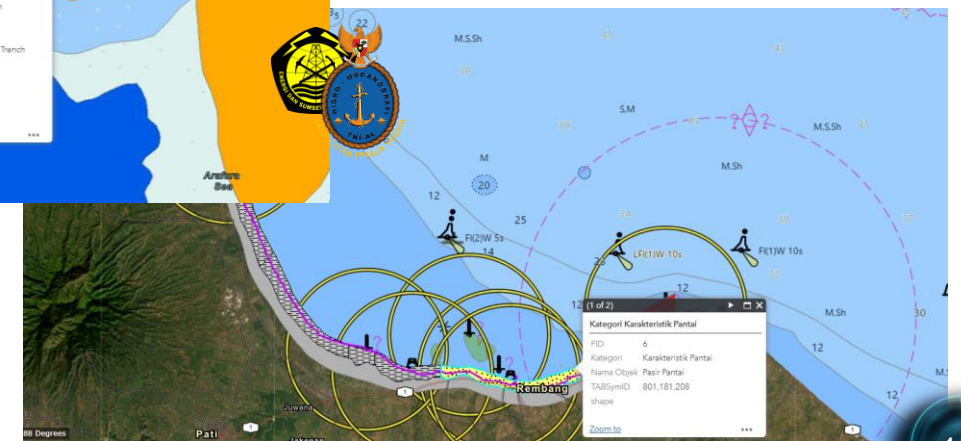
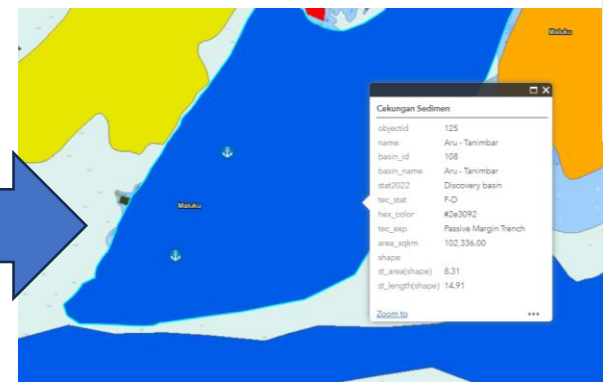
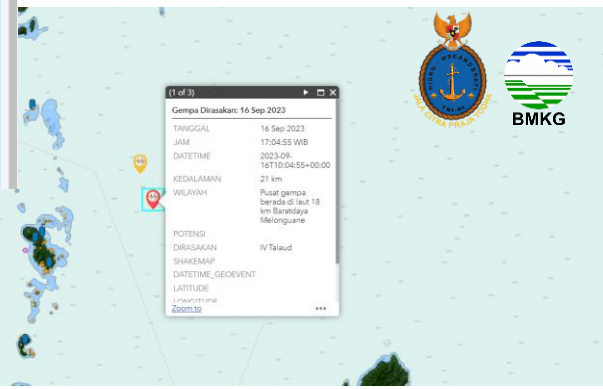




TENTARA NASIONAL INDONESIA ANGKATAN LAUT PUSAT HIDRO - OSEANOGRAFI



ONE MAP POLICY



Hydro spatial sharing use with the agency or institution, making it easier to make decisions



INDONESIAN NAVAL HYDRO-OCEANOGRAPHIC CENTER



Thank You!

