

A detailed nautical chart of a coastal area, likely a harbor or estuary. The chart features depth soundings in fathoms and meters, various navigational aids like buoys and lights, and labels for geographical features such as 'Spoil Area', 'BARGE LANE', 'TEXAS CITY OUTER RANGE', and 'HIGHWAY FERRY CHAN'. A semi-transparent blue banner is overlaid across the center of the chart.

# ARHC10 Operations and Technology Working Group

NOTE E  
The controlling depth in the approach to the Highway Ferry slip at Port Bolivar is 9 feet for a width of 200 feet.

- **Confirm OTWG Membership**
- **Personnel Exchanges**
- **ARHC9-03 CATZOC**
  - Updated CATZOC data
  - Member States CATZOC Practices
- **ARHC9-12 Arctic Vertical Datums**

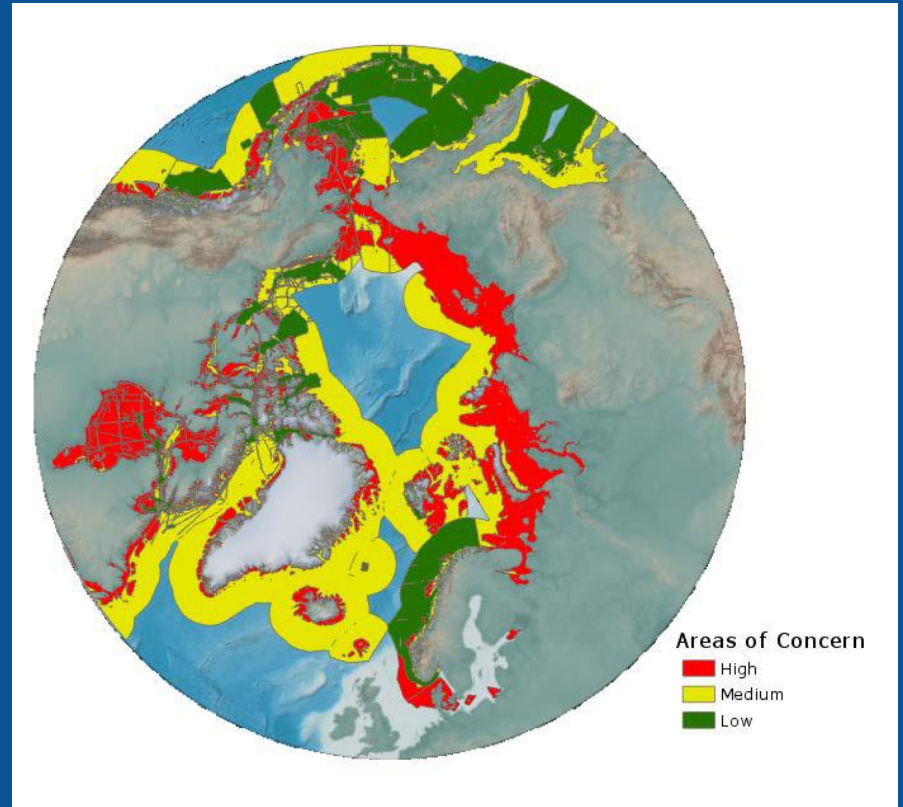
## **Personnel Exchanges**

**No Activity in 2020**

**Canadian Sponsored Women in Hydrography Exchange**

## Recommended Actions (Chair)

- **Hydrographic Adequacy Risk Assessment**
  - Completed in 2018 in support of PAME
  - Recommend 5 year update cycle
  - Requires assessment of quality for data holdings from member states



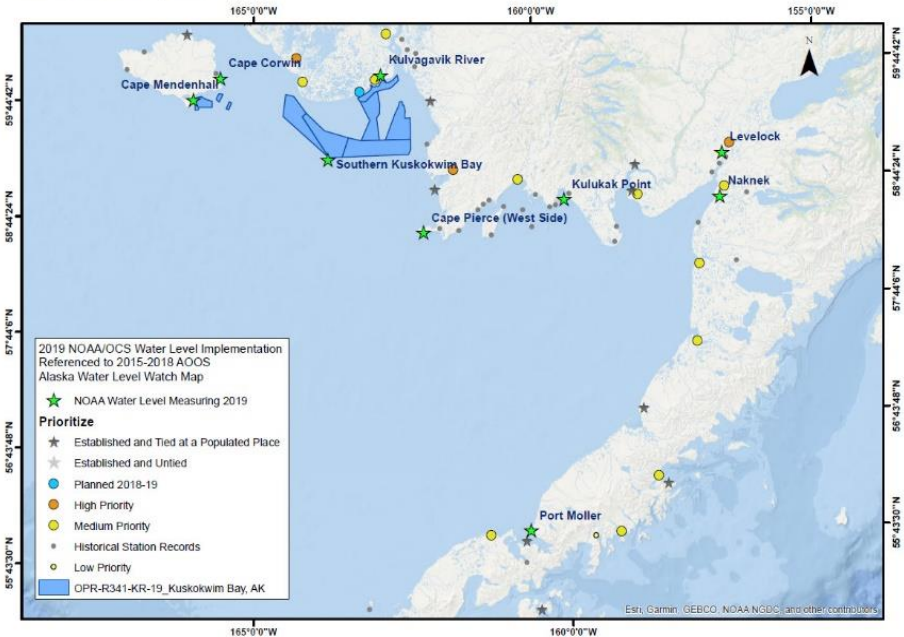
## Recommended Actions (Chair)

- **Assessment of Arctic Vertical Datum(s)**
  - Arctic Separation Model
    - » Vdatum Expansion
    - » BLAST?
    - » Other Models?



# Vertical Datum Control

OPR-R341-KR-19  
Kuskokwim Bay, AK & Vicinity Map with Tide Program Locations  
June - October, 2019



Legend

- ★ Historic NOAA Tide Station (215)
- ★ Active NOAA Tide Station (26)

