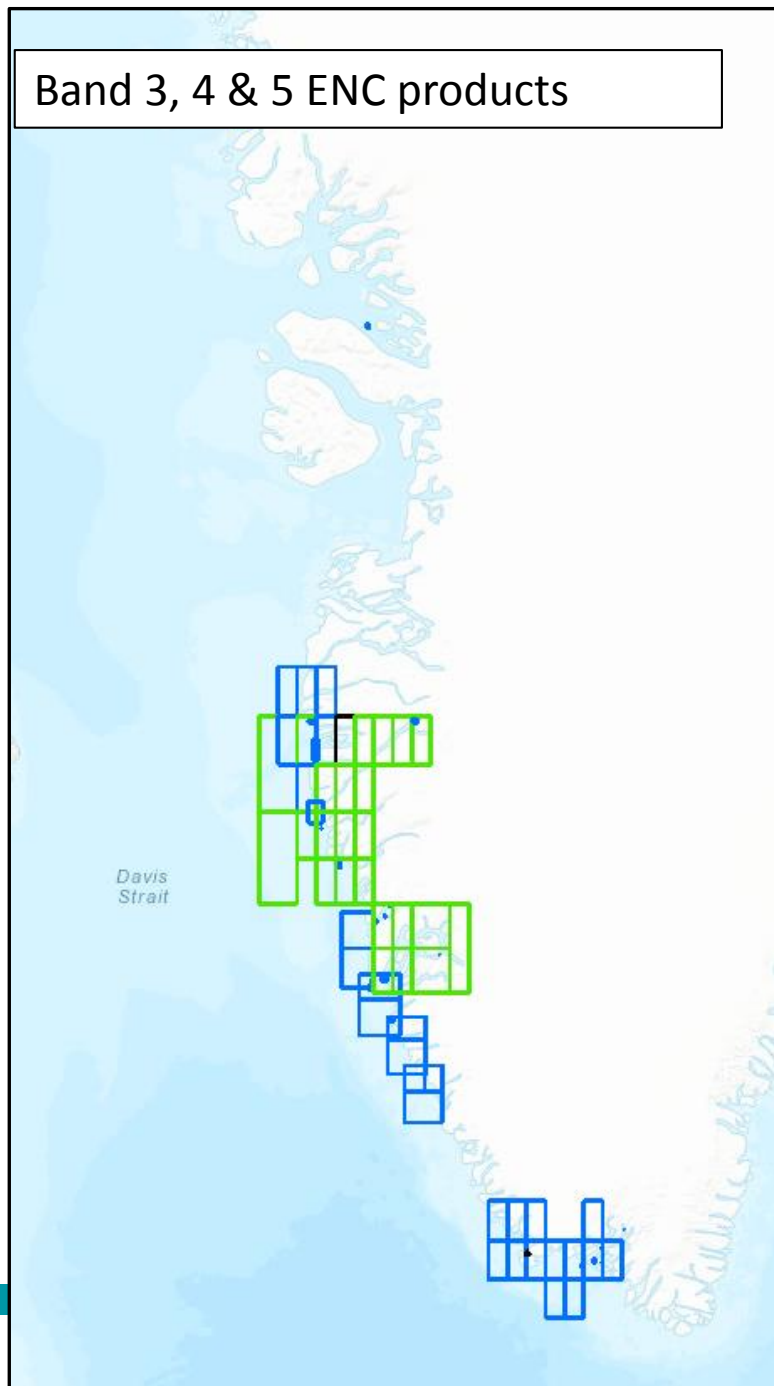


Danish Geodata Agency

ARHC -10 14/08/20

Band 3, 4 & 5 ENC products

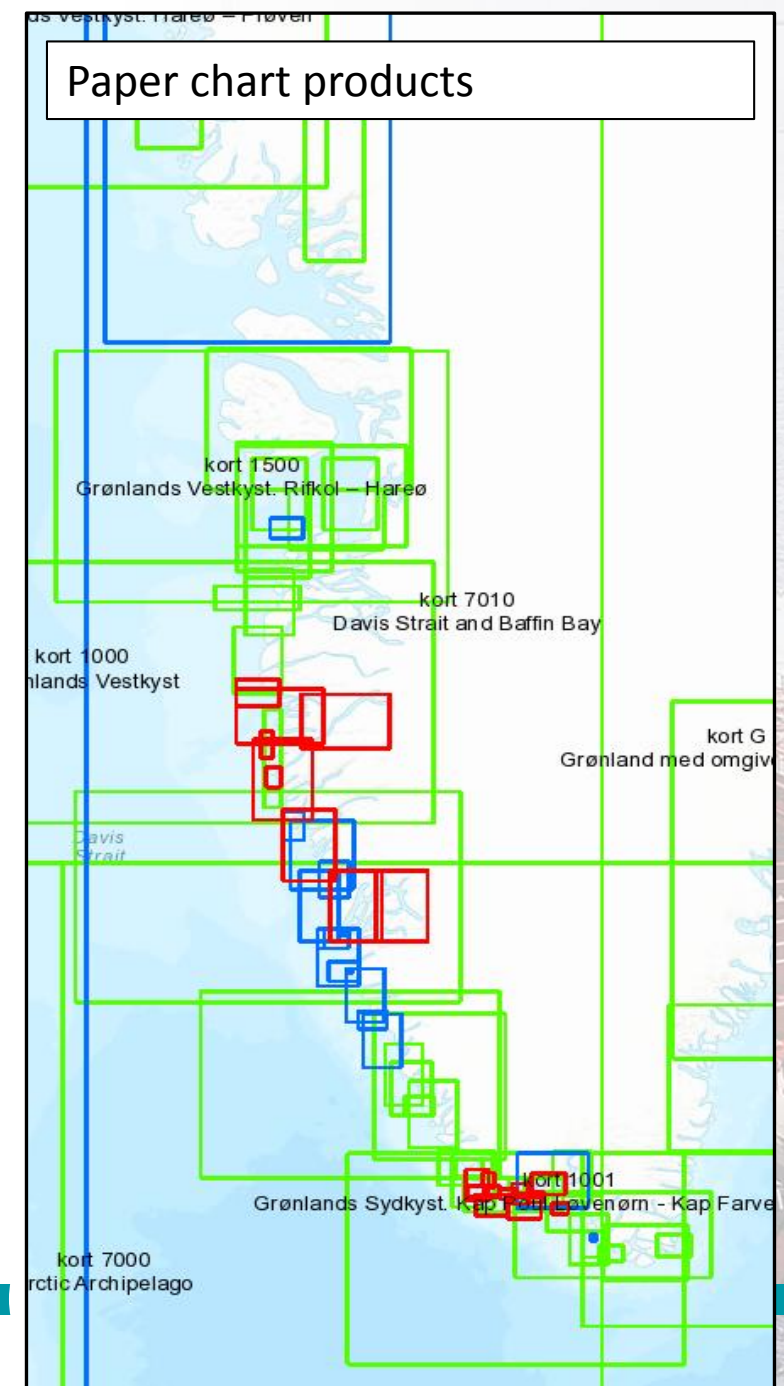


Existing products

- Current ENC products in Greenland
 - 100k coverage often first scale
- Significant gaps in ENC products
- Current paper chart products
 - Red & blue modern charts
 - Green limits – older raster charts

14-08-2020

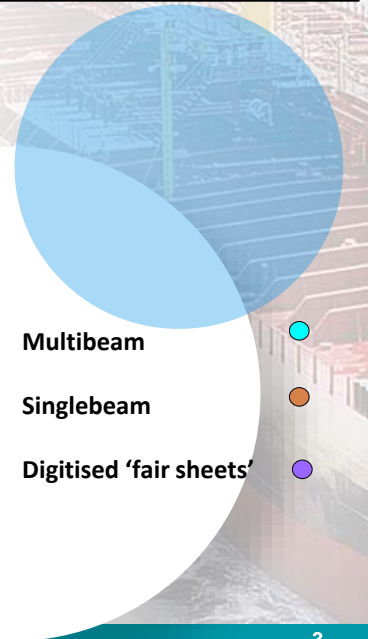
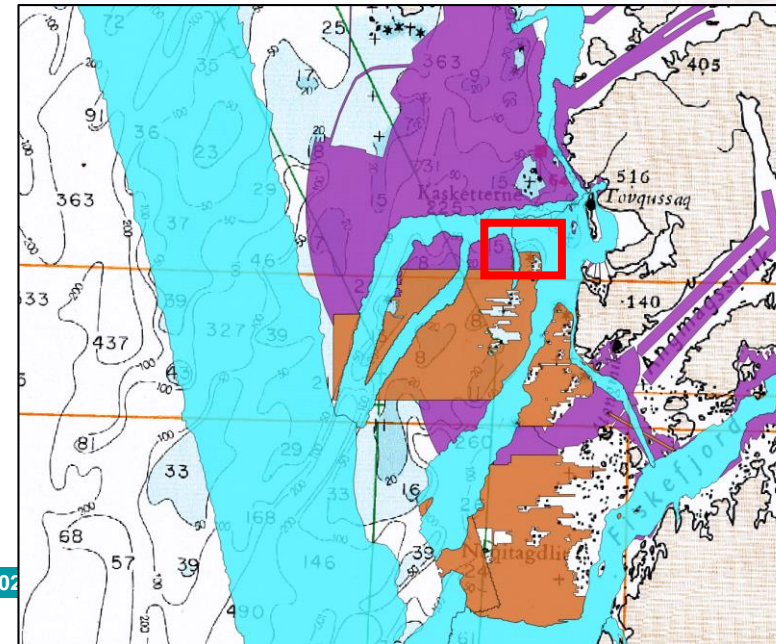
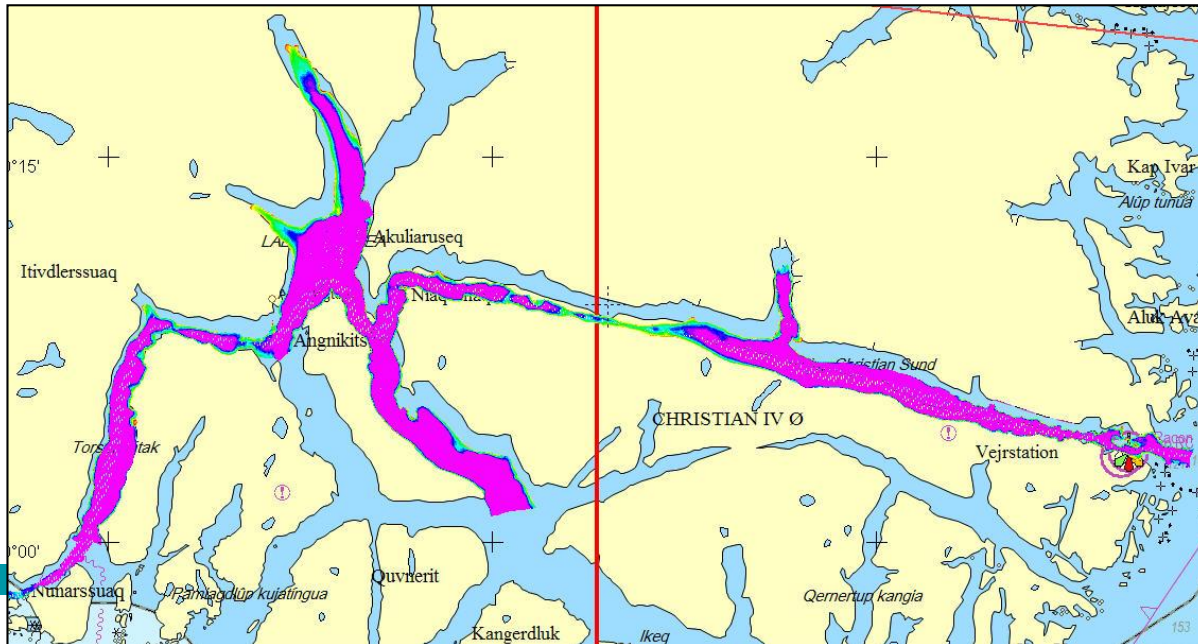
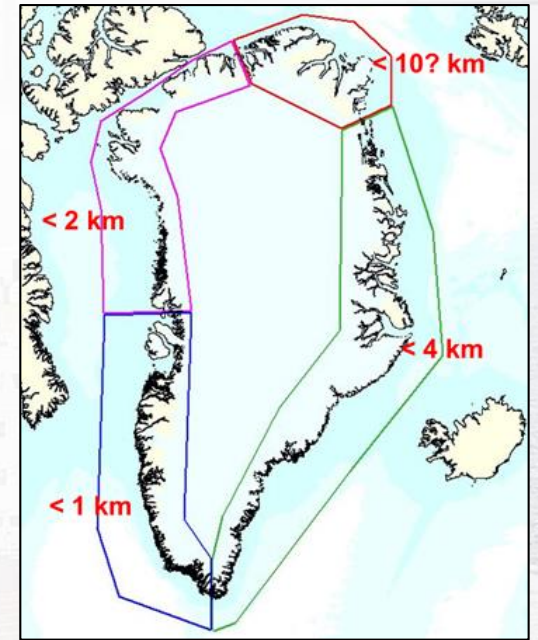
Paper chart products





Production challenges faced

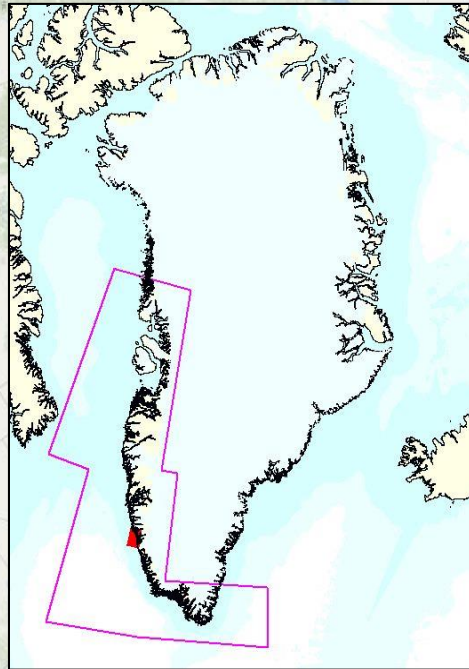
- Size of Greenland $> 2,000,000 \text{ km}^2$
- Need to capture most of the source data
 - Geopositionally accurate coastline
 - Modern, multibeam survey
- Accurately joining different depth data sources together



08-202

3

New nautical charts in Greenland – agreement with Greenlandic Government



Production began in southern Greenland by producing paper charts and associated ENC's.

Production has been time consuming and we began looking at other options to release data more quickly to the mariner.

How do we best serve the mariner?



BASE ENCs - Concept

Overall aim:

To support the mariner in safe navigation with the best quality bathymetric data available, where none is currently published.

Why:

- To release our best quality data in a usable scale
- To connect routing to existing products and to open new route options
- Reduce the time taken for survey data to be published for use
- To improve ENC coverage in Greenland
- Move towards data driven
- Move to ENC first



BASE ENCs - Concept

Official ENC products distributed through our RENC

Content:

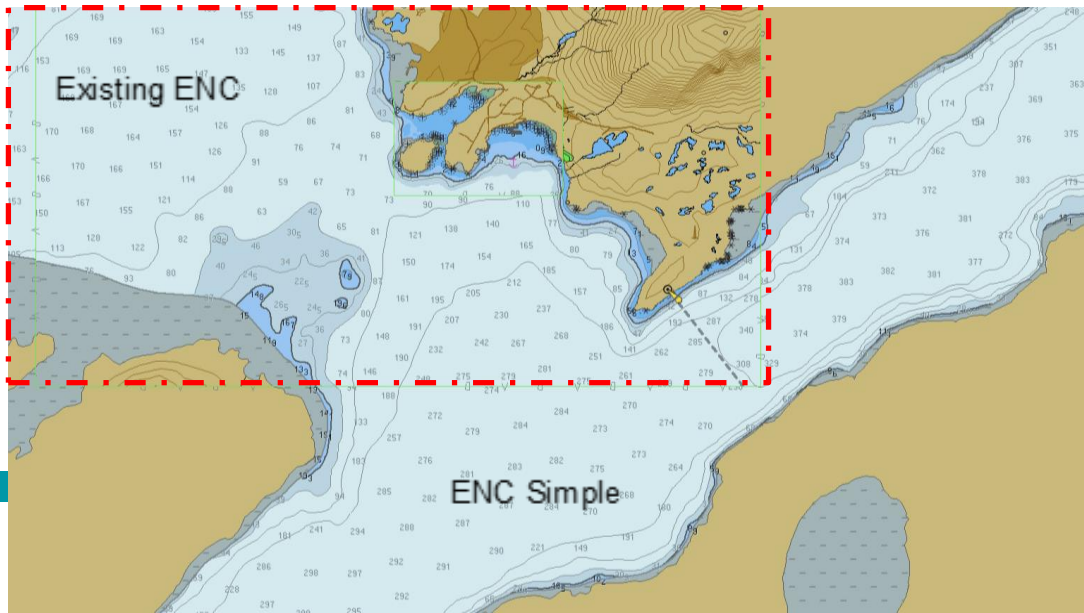
- Multibeam survey data at 1:22k for Band 4 ENC, processed using SCALGO
- Geopositionally correct coastline
- Aids to navigation
- Information deemed essential for safe navigation (feature capture matrix)
 - Limited features in Greenland
- CTNARE – refer to paper chart outside of multibeam areas

ENC Simple trial – lessons learned



Geodatastyrelsen

- ENC Simple pilot project run in 2018 – Pilots & Navy
 - Not official products
- Production process:
 - Expanded features matrix
 - Included BASE ENC content in existing gridded ENC
- Feedback from users:
 - Positive feedback – wanted as official products
 - Additional scales requested

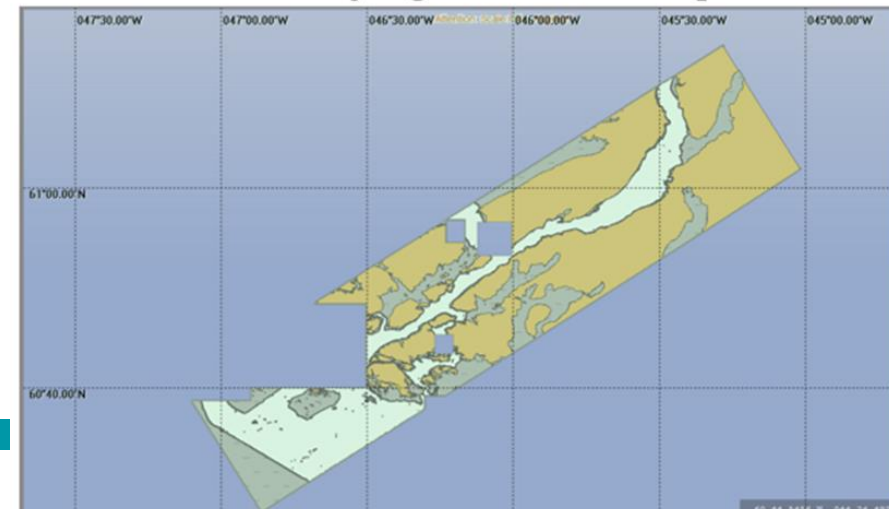


14-08-2020

Testområde 1. Prins Christianssund.

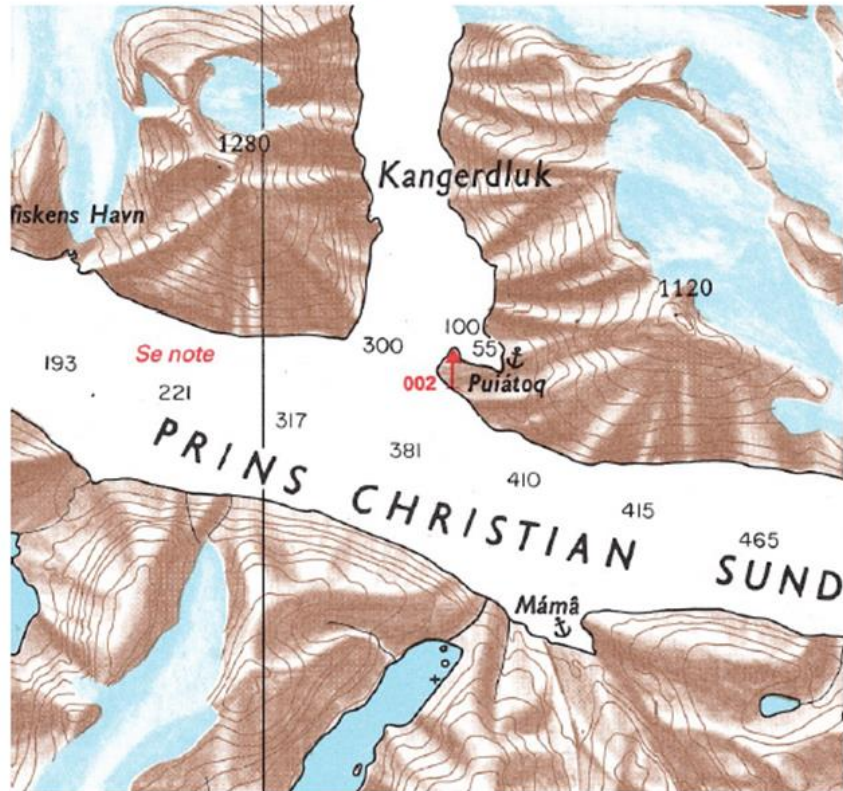


Testområde 2. Indsejlingen til Narsarsuaq.





The official paper chart



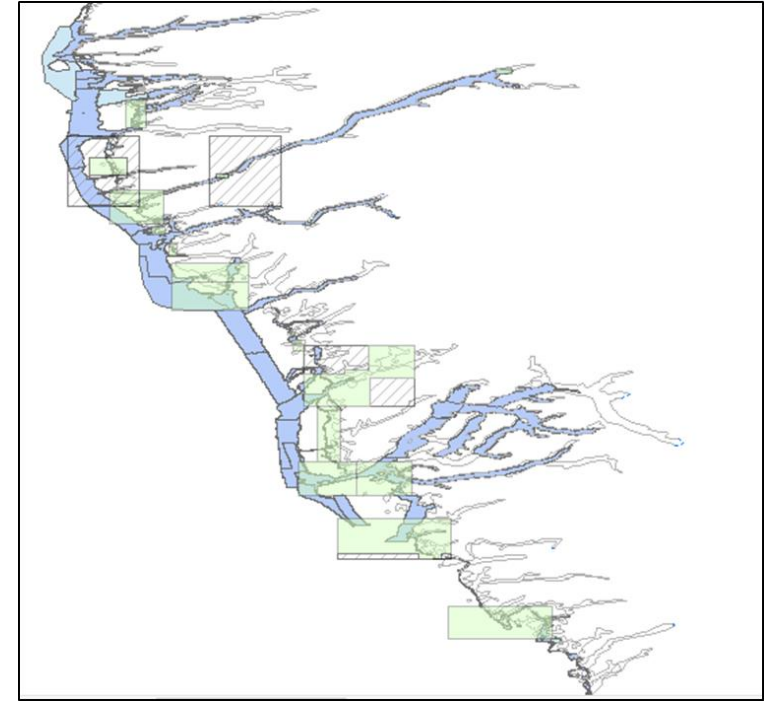
ENC Simple





BASE ENCs – Next steps

- Created 4 test BASE ENC cells as part of 2020 production
- Awaiting final approval to include in production
- Over 70 new gridded cells identified at Band 4
- Review production plan and processes for coming years
- Use BASE ENCs as foundation layer for full ENC and associated paper chart production
- Reviewing the relationship between ENC and paper products





Geodatastyrelsen

Any questions?