

## Employing Vessel Tracking and Communications to Aid Maritime Safety in Alaska

Matt York, Deputy Director, Marine Exchange of Alaska



*The Marine Exchange of Alaska is a non-profit maritime organization established to provide the Alaska maritime community information, communications and services to ensure safe, secure, efficient and environmentally responsible maritime operations.*

# Past Marine Exchanges

*“Exchanging” Maritime Information*



Semaphore - Chalkboards - Megaphones



Container



Cruise Ships



Oil Spill Response



Tugs and Barges



Cargo Ships



Tankers



Small Passenger Vessels



Fishing



Ferries



Coast Guard



# Marine Exchange of Alaska

24 Hour Operations Center

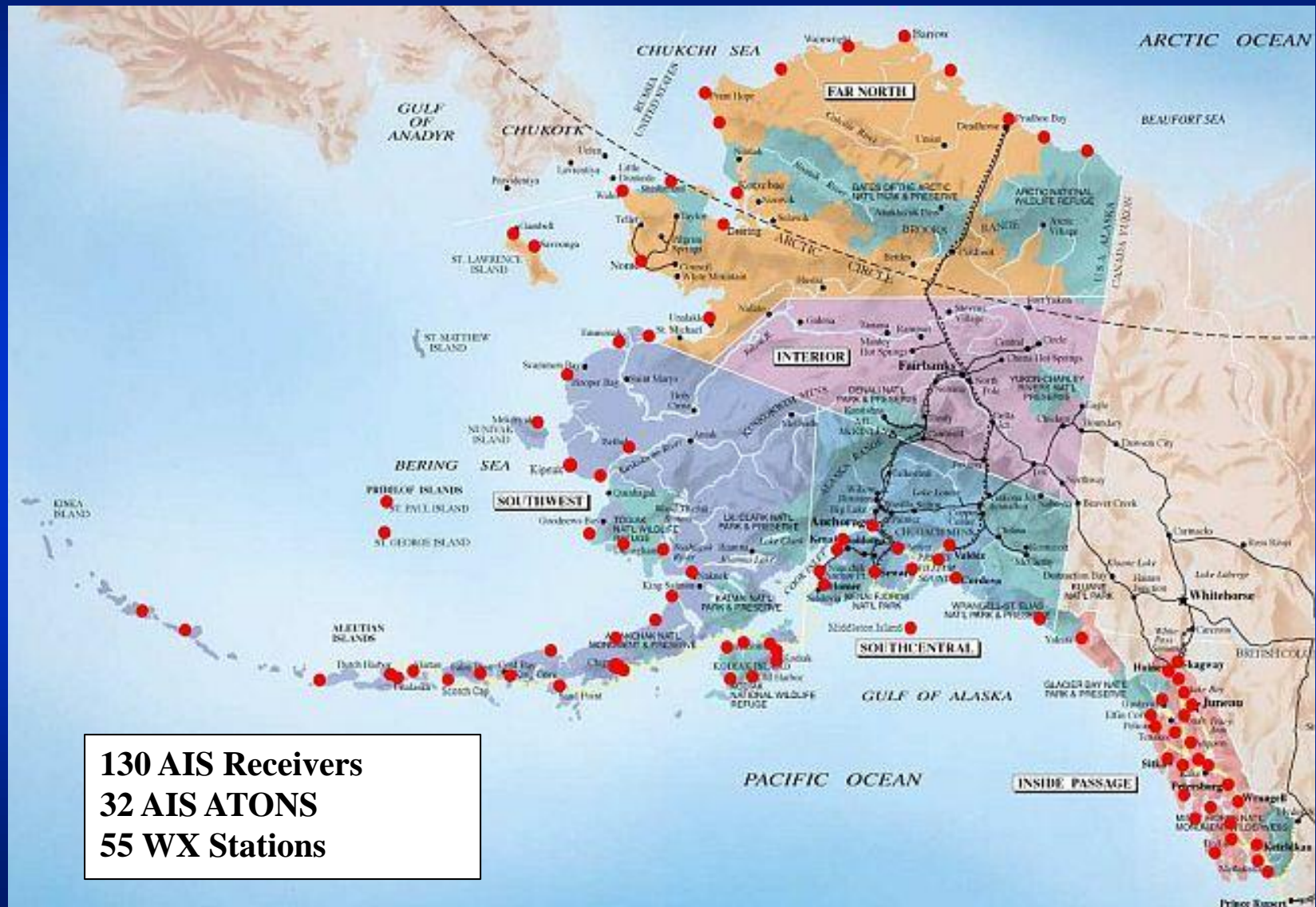
1.5 million square miles



- Modern Day Information Brokers
- AIS – Vessel Tracking
- Comms via Computers, email, phone, internet



# MXAK Alaska AIS and WX Network



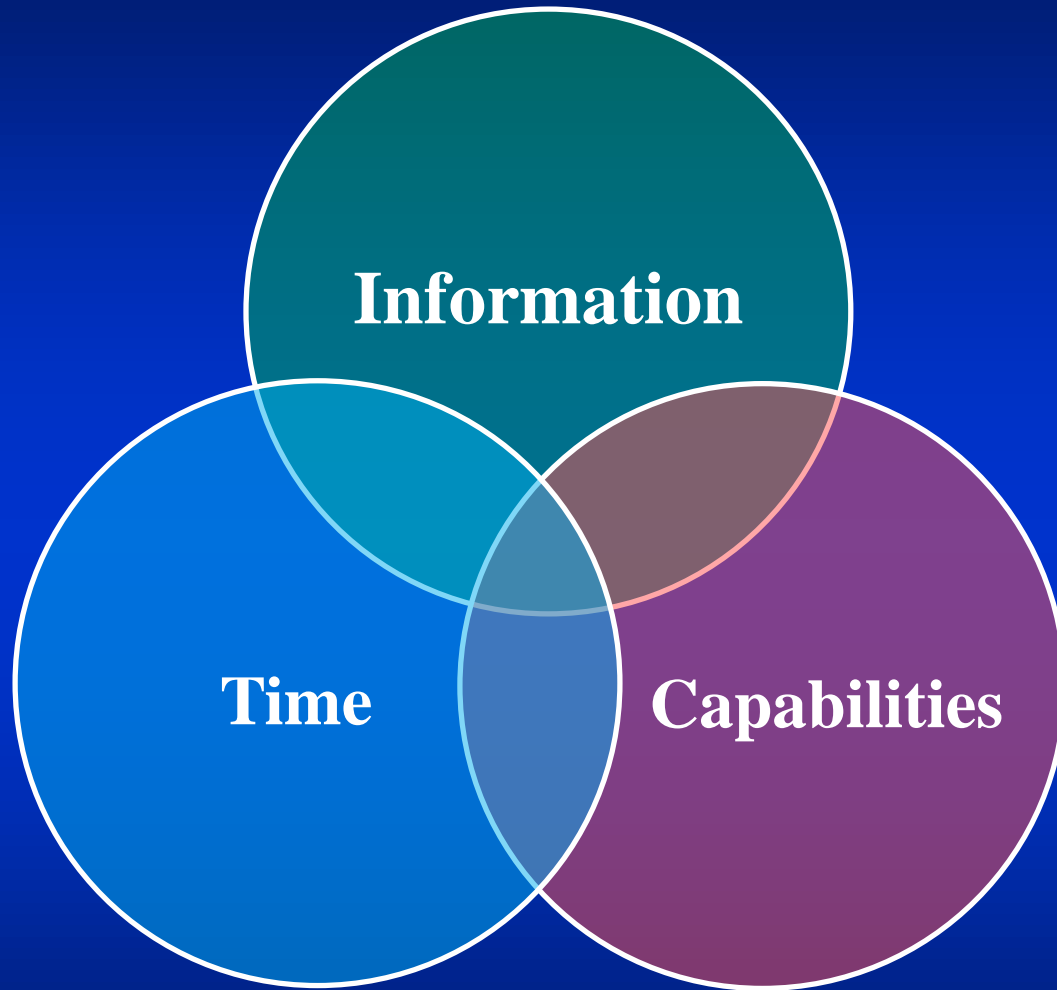




## Remote – Self Supported AIS Sites



# **Maritime Safety and Environmental Protection**



**Prevention - Intervention - Response**



ALASKA MARITIME  
PREVENTION & RESPONSE  
**NETWORK**

**1.5 Million Square Miles**



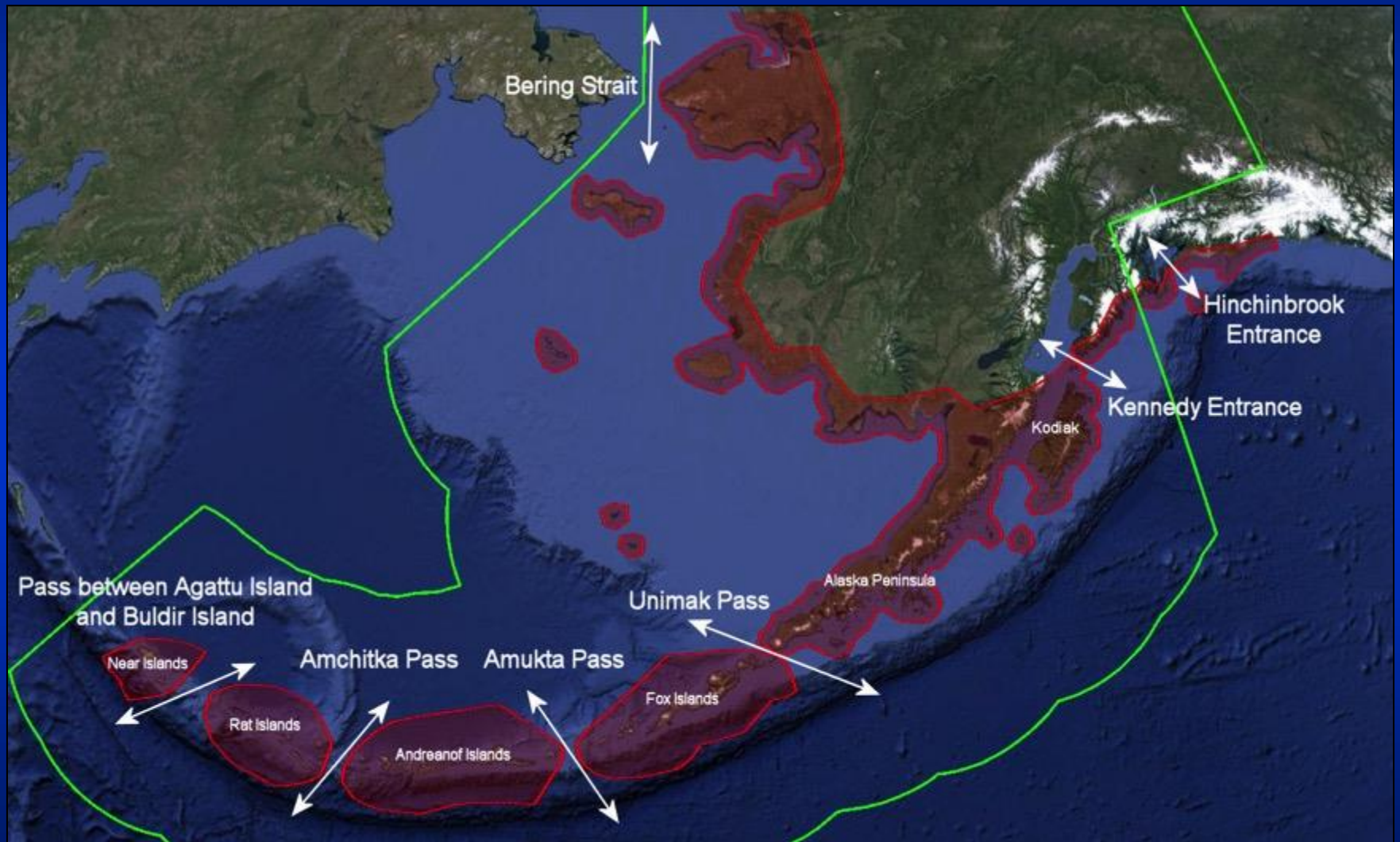


# Selendang Ayu

*No Maritime Domain Awareness and  
No Maritime Domain Management*

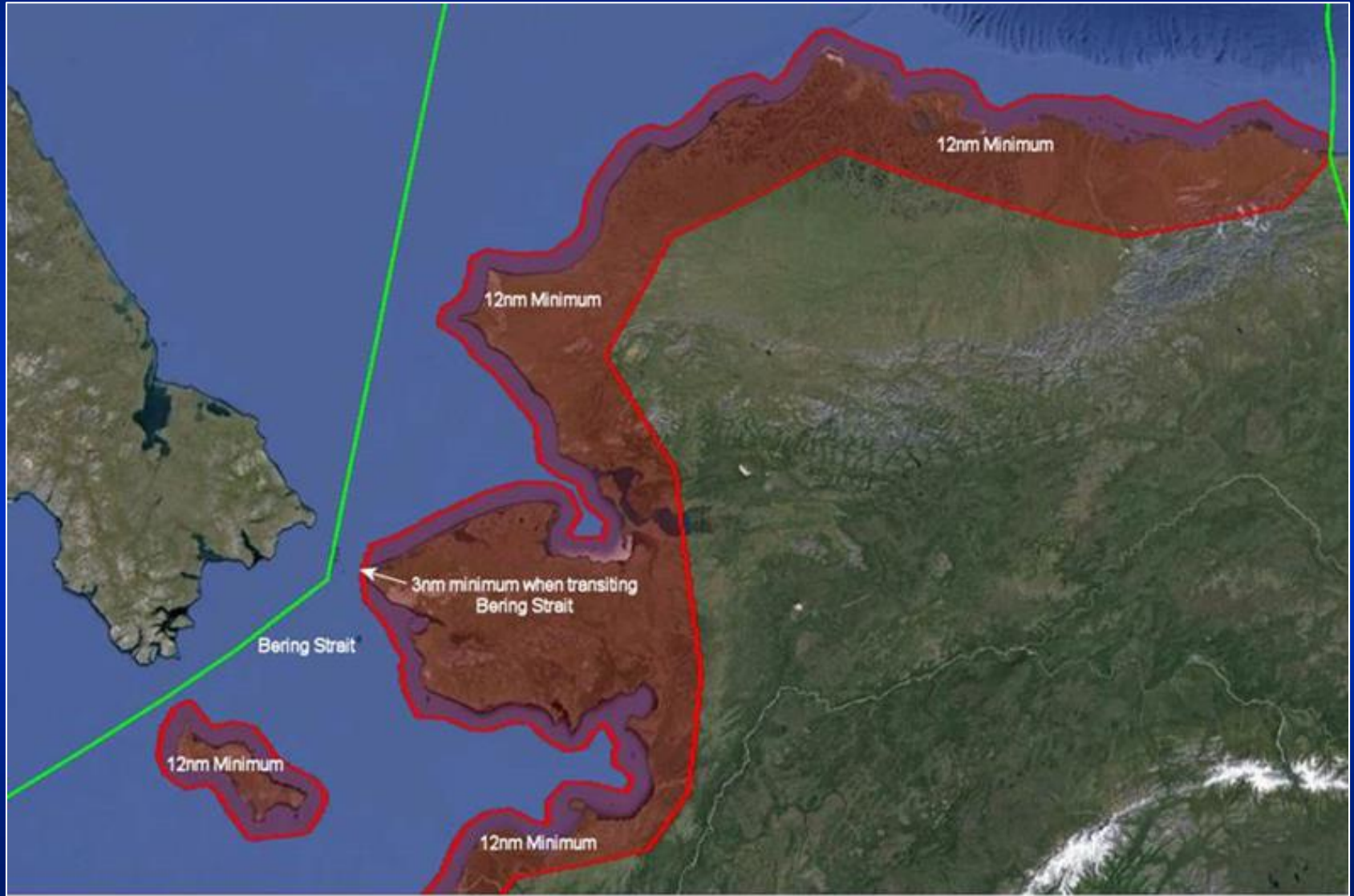


# Risk Mitigating Routes Through Passes





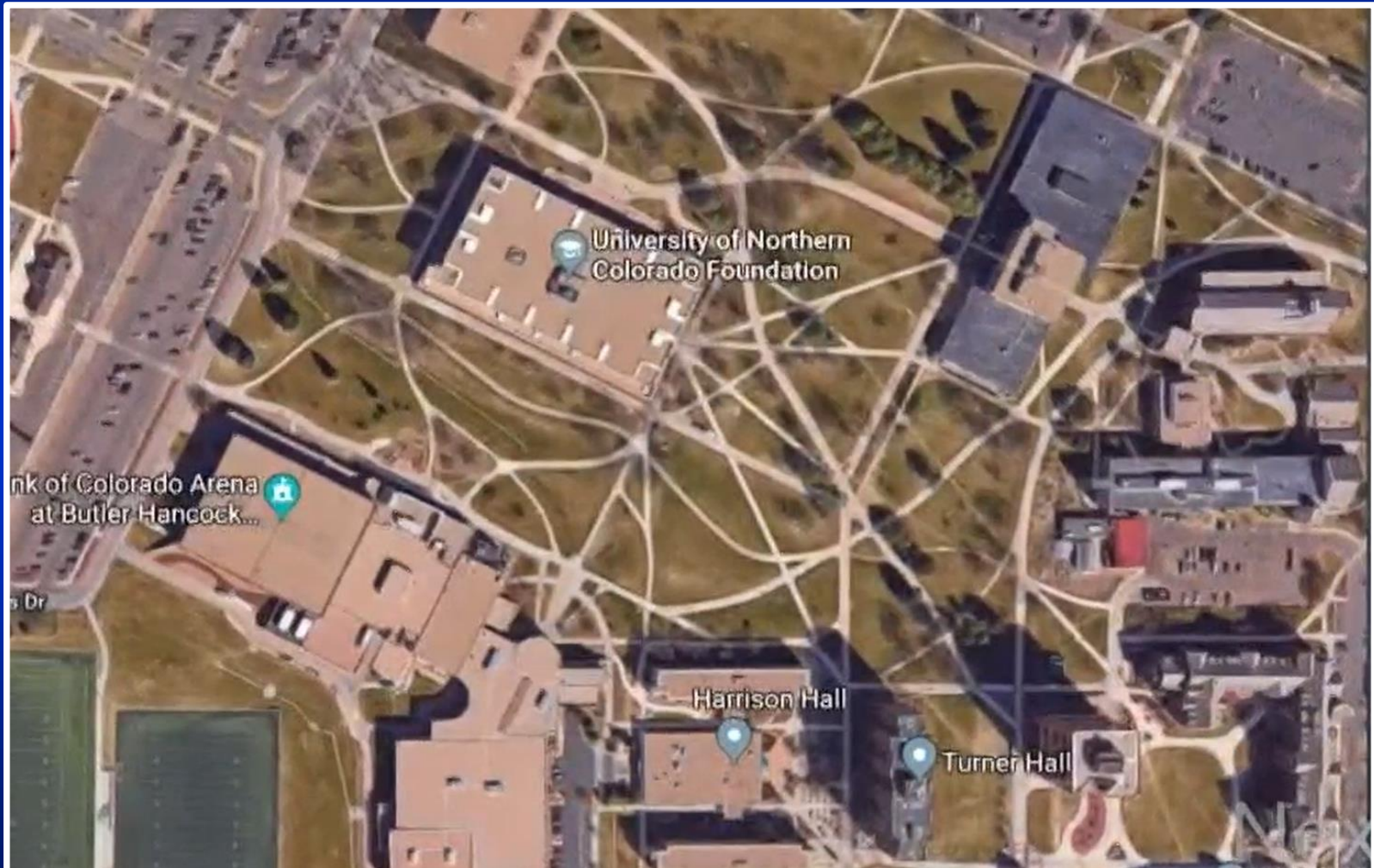
# Risk Mitigating Distance Offshore





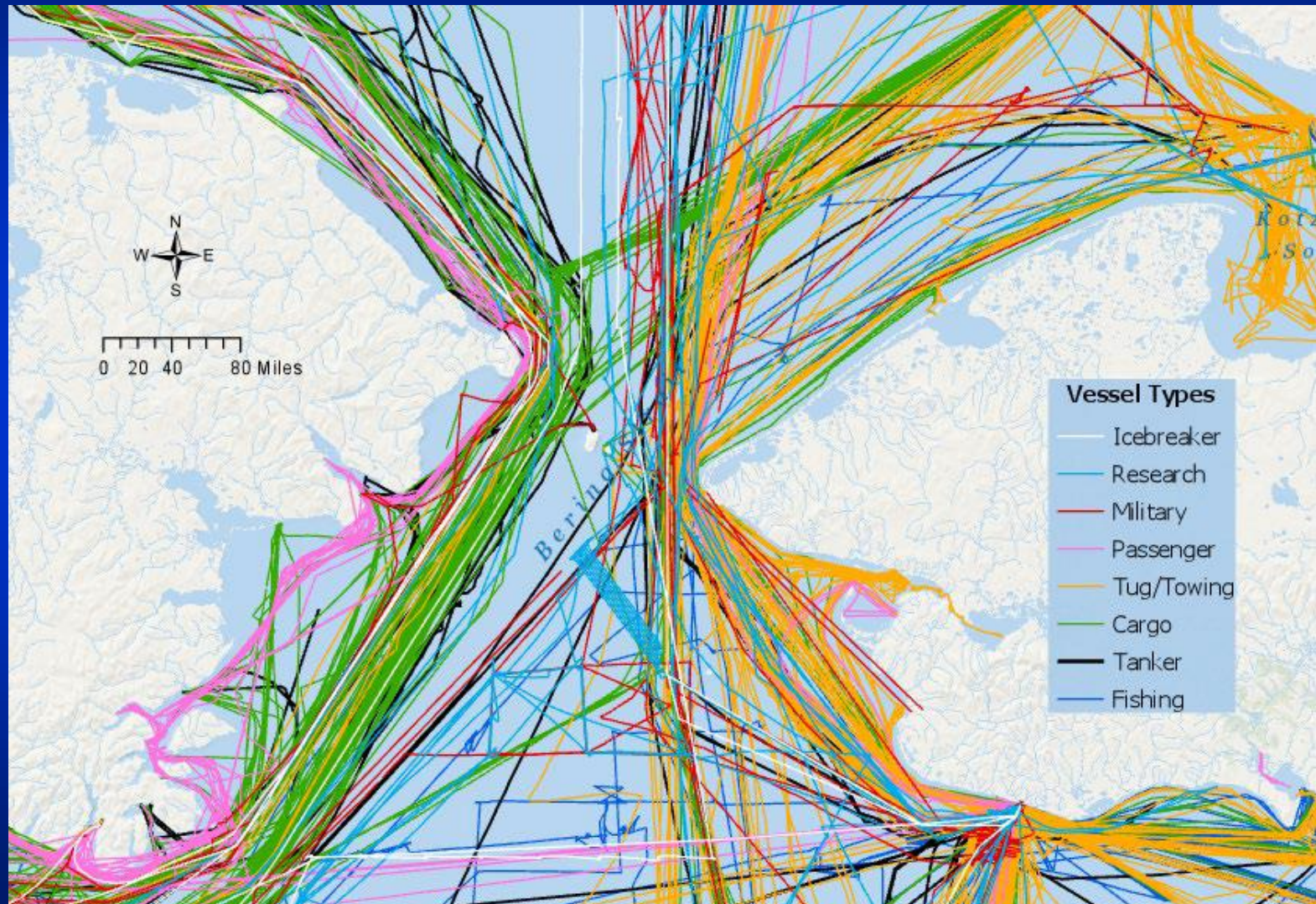
# Bering Strait – Arctic Marine Traffic Assessments

## Install Sidewalks Where Students Walk



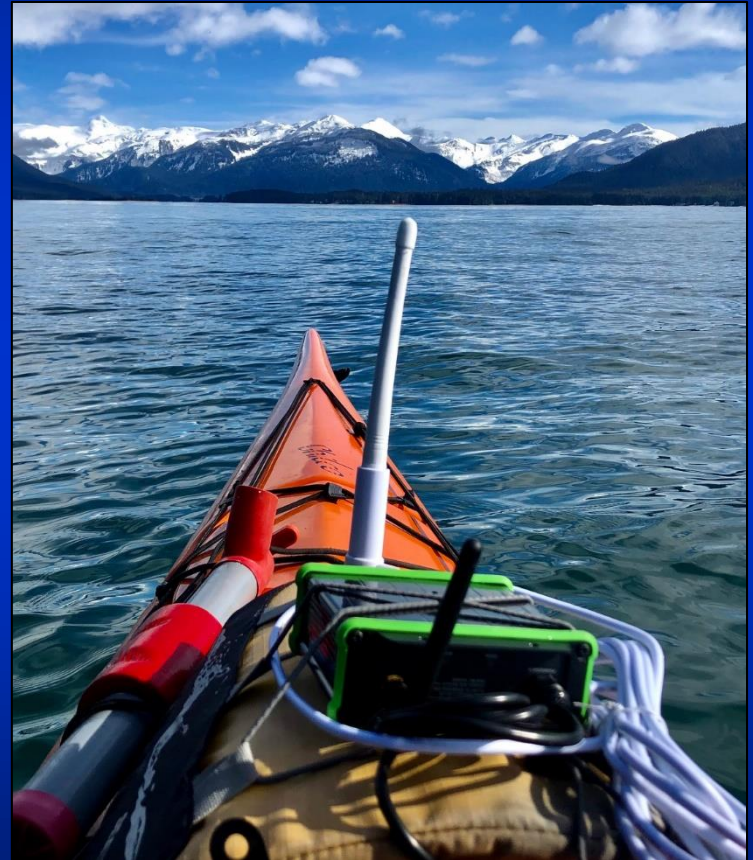


# Bering Strait – Arctic Marine Traffic Assessments

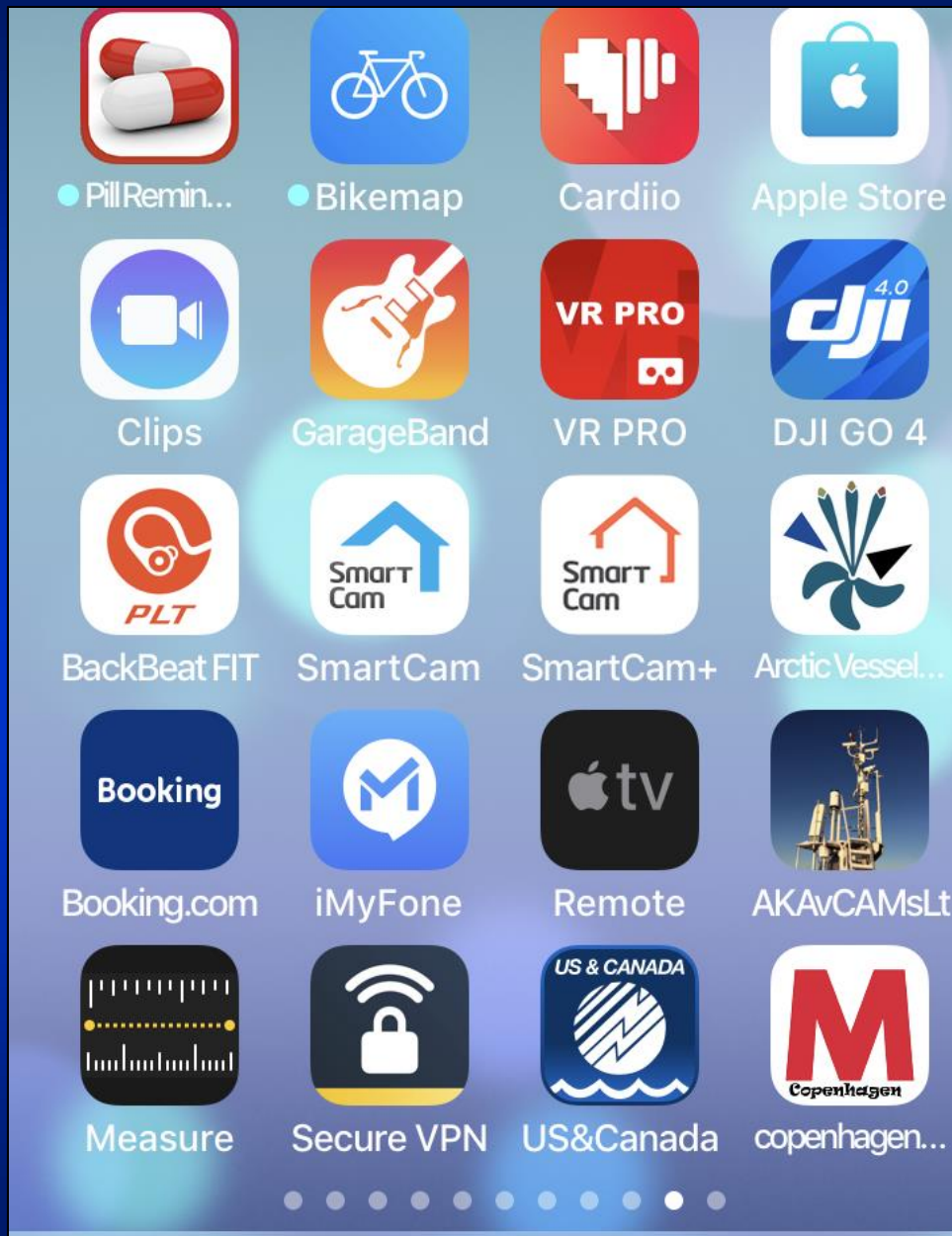




# Portable AIS

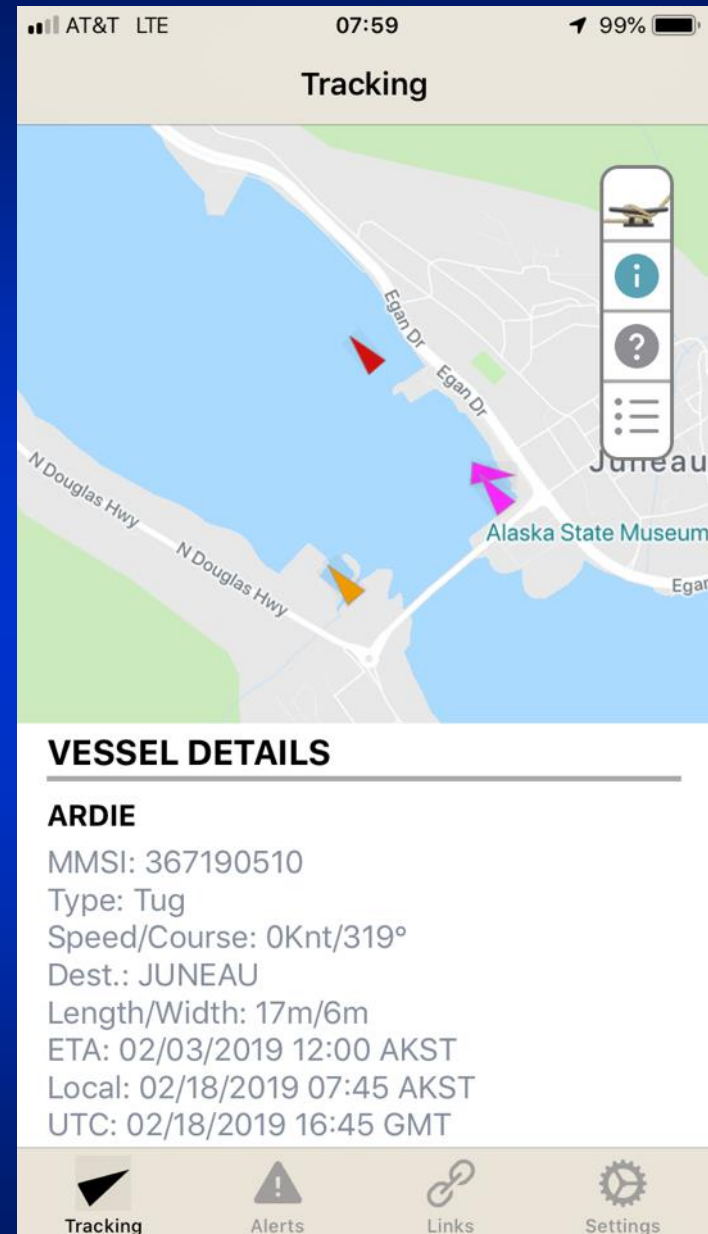
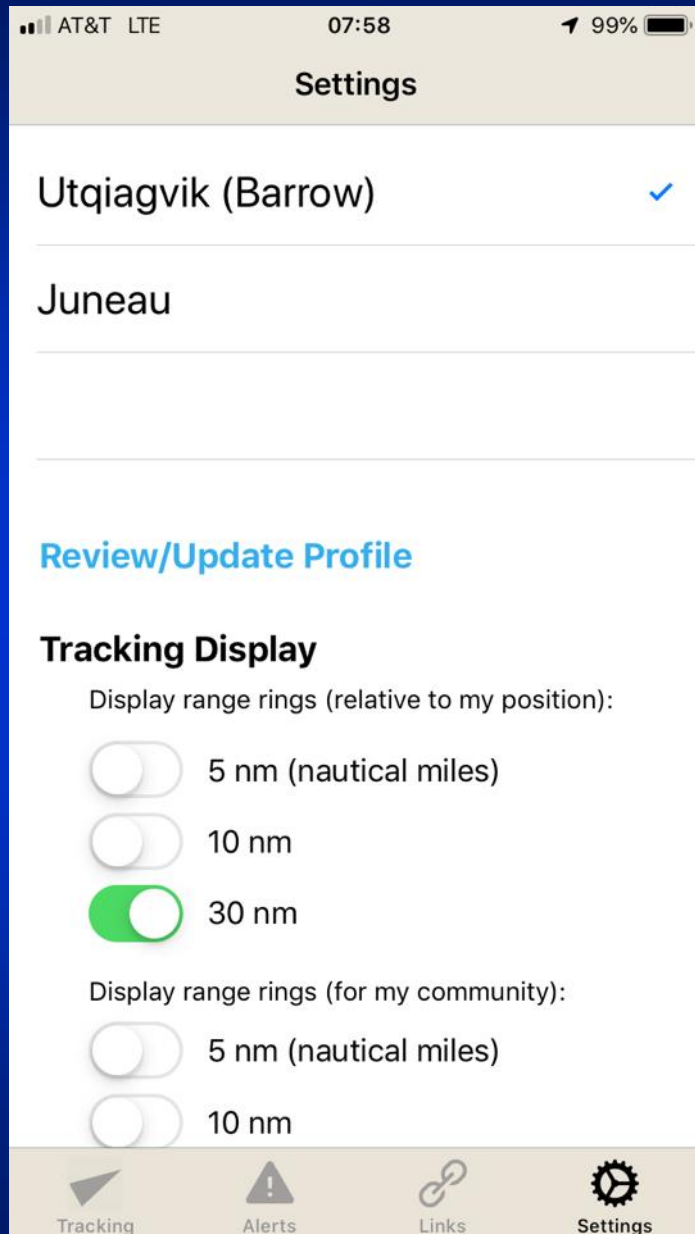






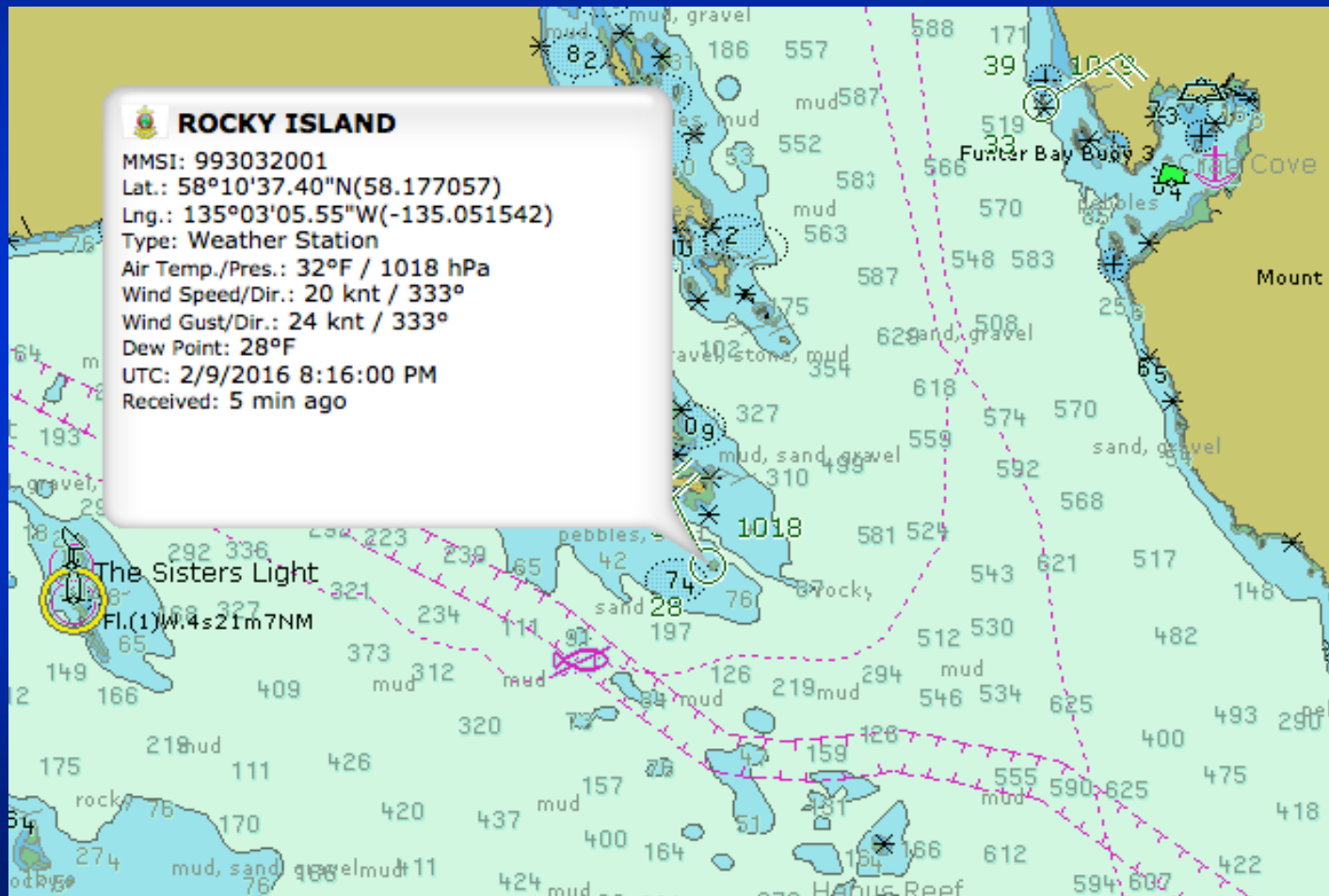
## Automatic Identification System (AIS) and Satellite App Display





# eNAV Application

## WX Information

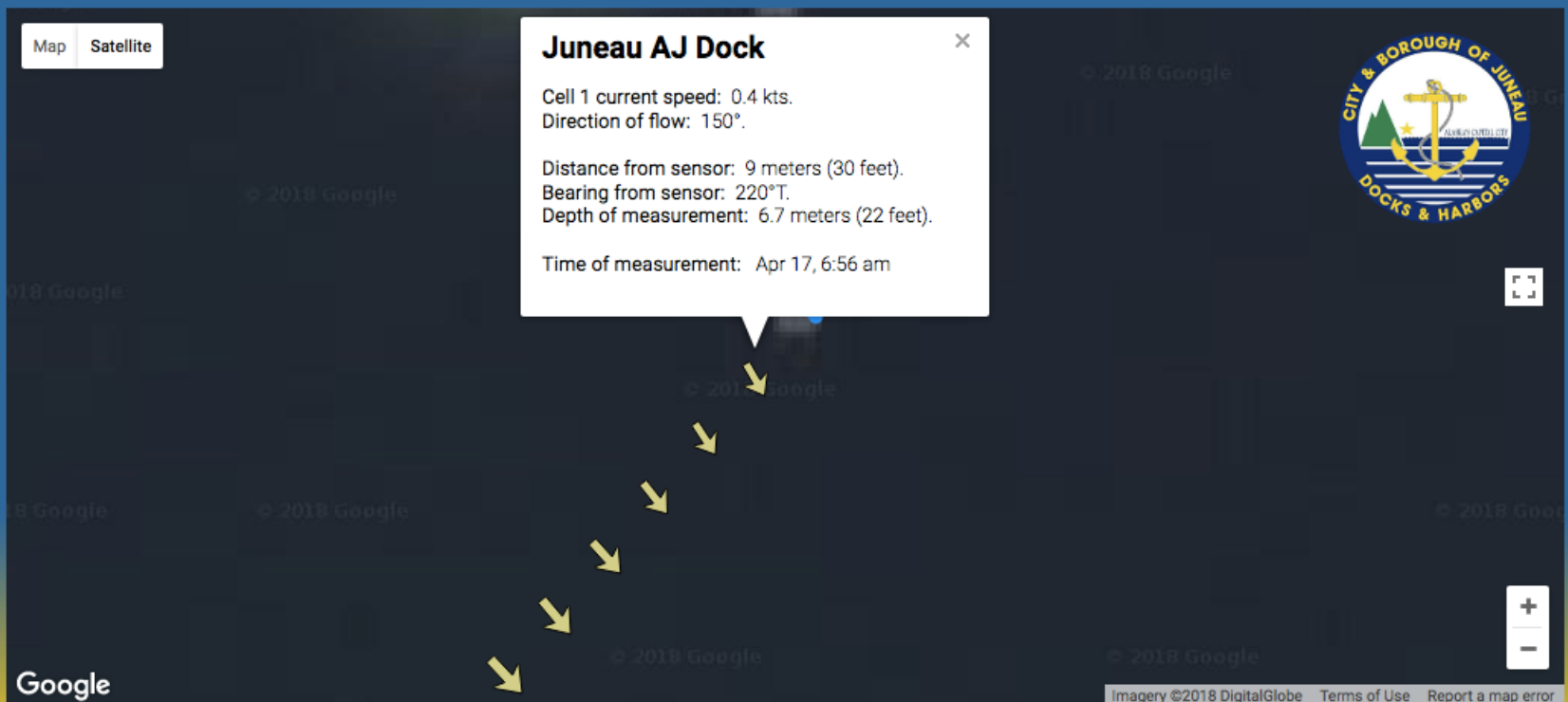




# PORT OF JUNEAU CURRENT SENSORS

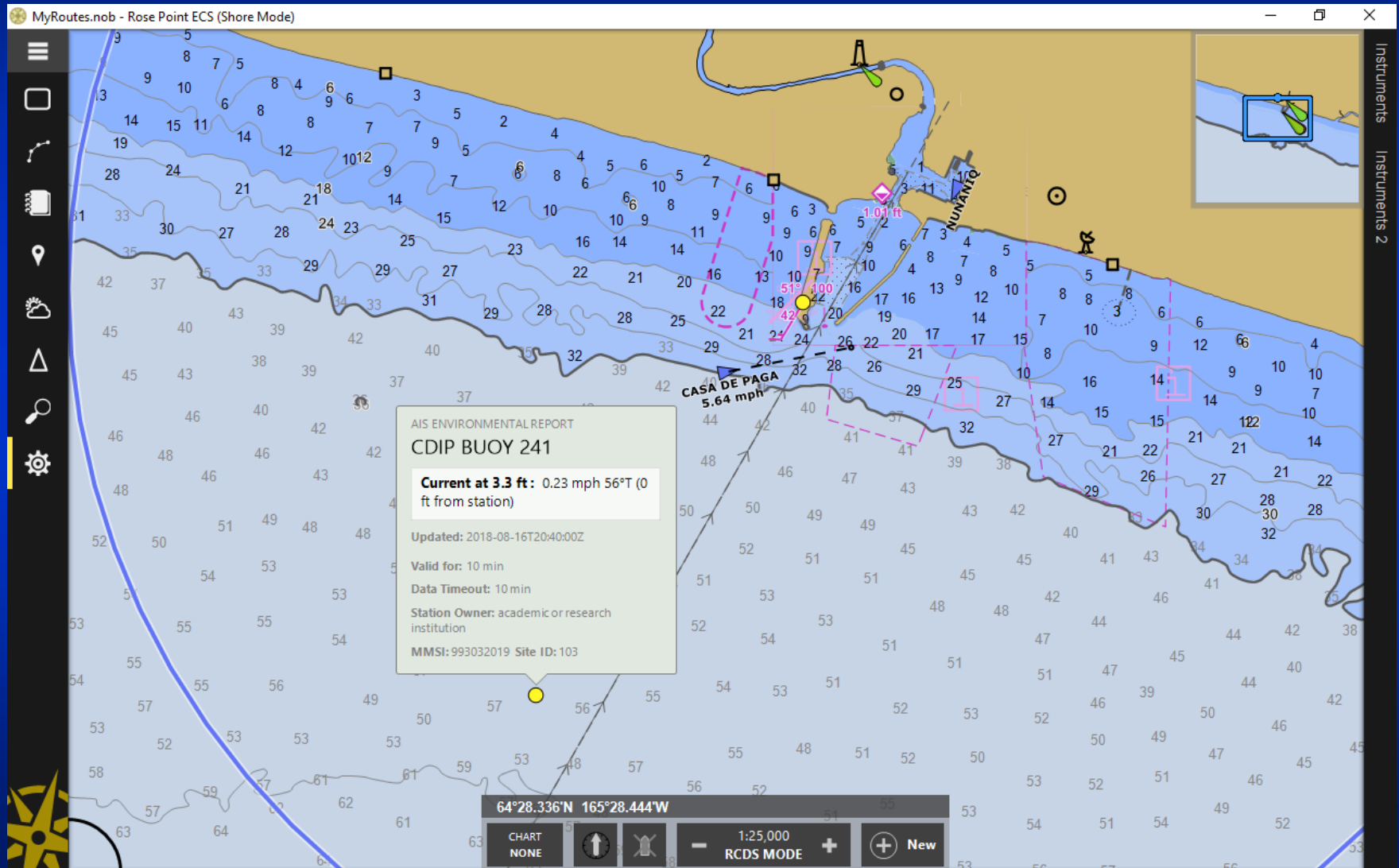


**Port of Juneau — Environmental sensors for wind, weather and tidal currents.**



# NOME Environmental Data – Buoy

## Current and Waves



## INTERNET DISSEMINATION OF DATA

# LNM 38/17 ALASKA - SOUTHEAST - ICY STRAIT - NORTH INIAN PASS

The currents in North Inian Passage and Glacier Bay have been observed at up to 3 knots above the NOAA published current predictions. Mariners should exercise caution when transiting the area. Questions/concerns should be directed to LT Bart Buessler at (907) 271-3327 or by email to [bart.o.buesseler@noaa.gov](mailto:bart.o.buesseler@noaa.gov).

or

