



IHO

International
Hydrographic
Organization

ARHC12



Iceland National Report

- Presented by Níels Bjarki Finsen

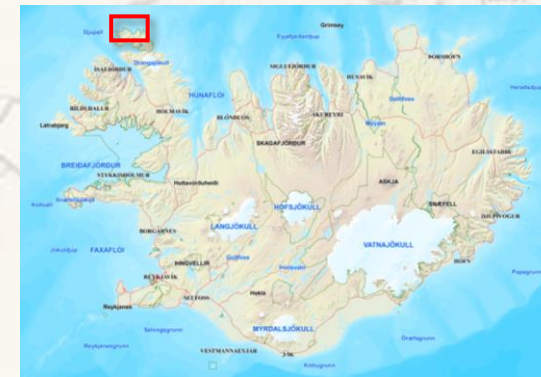
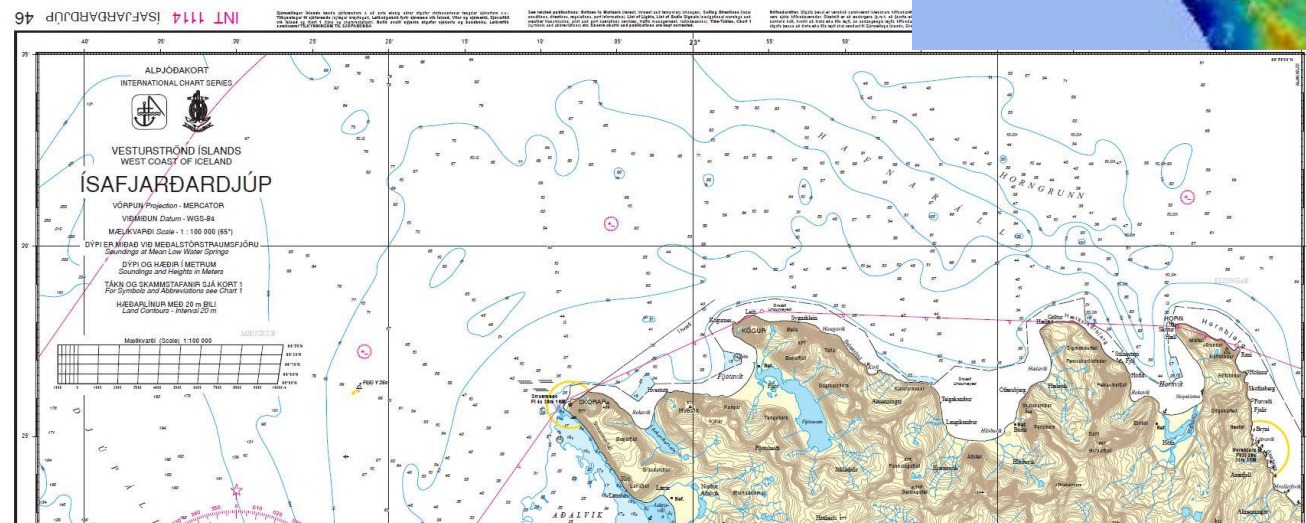
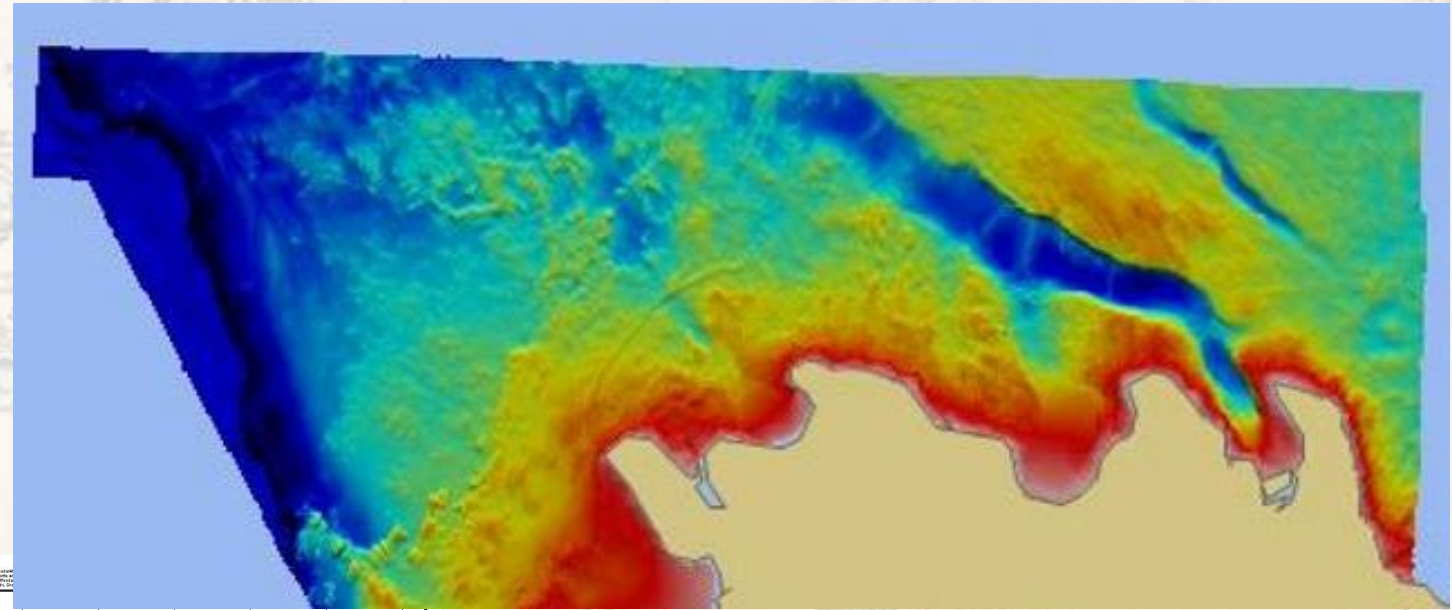
Iceland - Hydrographic Surveying setup

- Single vessel - single crew
- Survey season :
 - May to September
- Dual role of captain/chief officer
 - Navigate and operate the vessel
 - Plan and execute surveys

Siglingaáætlun BALDURS 2022							
	Mánudagur	Þriðjudagur	Miðvikudagur	Fimmtudagur	Föstudagur	Laugardagur	Sunnudagur
					1	2	3
April	4	5	6	7	8	9	10
	11	12	13	14	15	16	17
	18	19	20	21	22	23	24
	25	26	27	28	29	30	1
	2	3	4	5	6	7	8
Mai	9	10	11	12	13	14	15
	16	17	18	19	20	21	22
	23	24	25	26	27	28	29
	30	31	1	2	3	4	5
Júní	6	7	8	9	10	11	12
	13	14	15	16	17	18	19
	20	21	22	23	24	25	26
	27	28	29	30	1	2	3
Júlí	4	5	6	7	8	9	10
	11	12	13	14	15	16	17
	18	19	20	21	22	23	24
	25	26	27	28	29	30	31
	1	2	3	4	5	6	7
Ágúst	8	9	10	11	12	13	14
	15	16	17	18	19	20	21
	22	23	24	25	26	27	28
	29	30	31	1	2	3	4
September	5	6	7	8	9	10	11
	12	13	14	15	16	17	18
	19	20	21	22	23	24	25
	26	27	28	29	30	1	2
	3	4	5	6	7	8	9
Oktober	10	11	12	13	14	15	16
	17	18	19	20	21	22	23
	24	25	26	27	28	29	30
	31						
Mælingar		Innivera		Sumarfri		Annað	

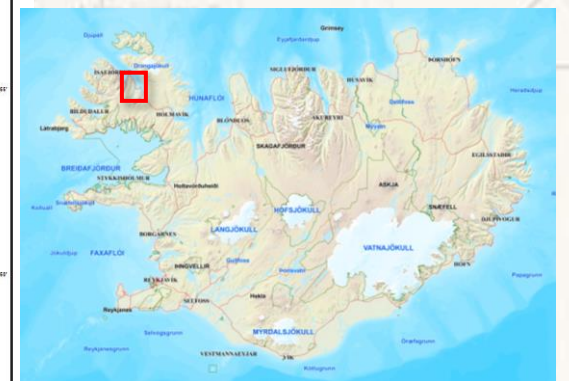
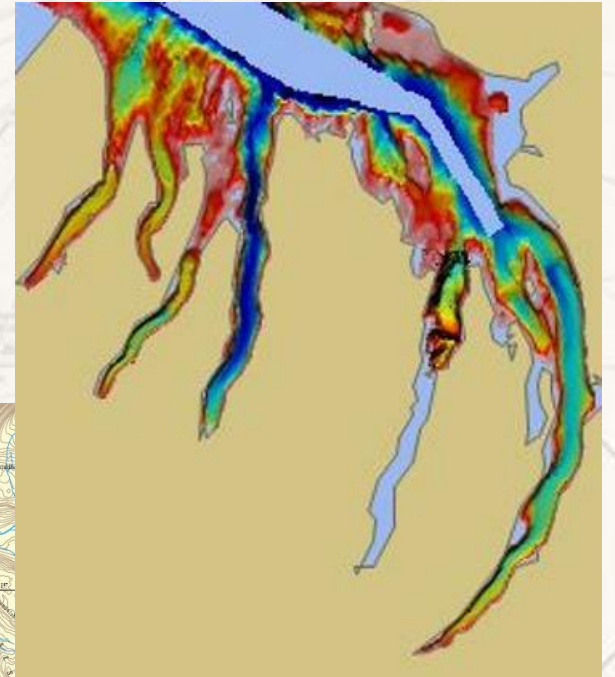
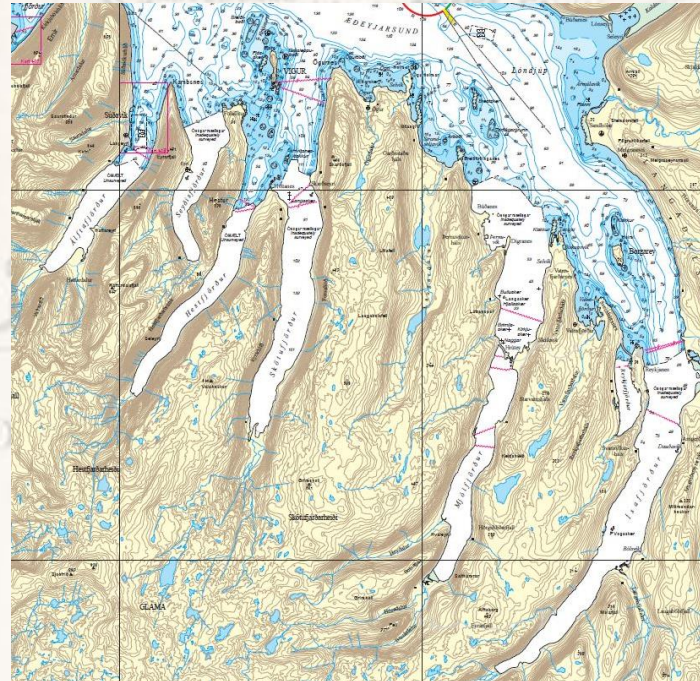
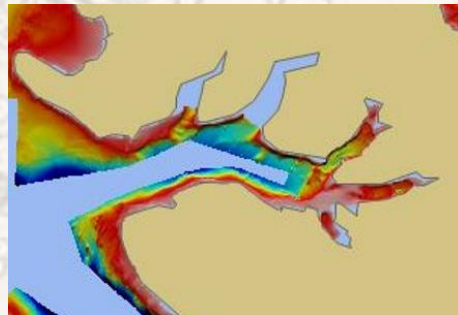
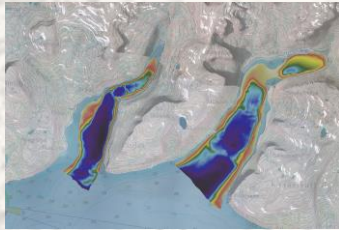
Surveys

- Inadequately surveyed area covered
 - North of the Westfjords
 - only lead line before



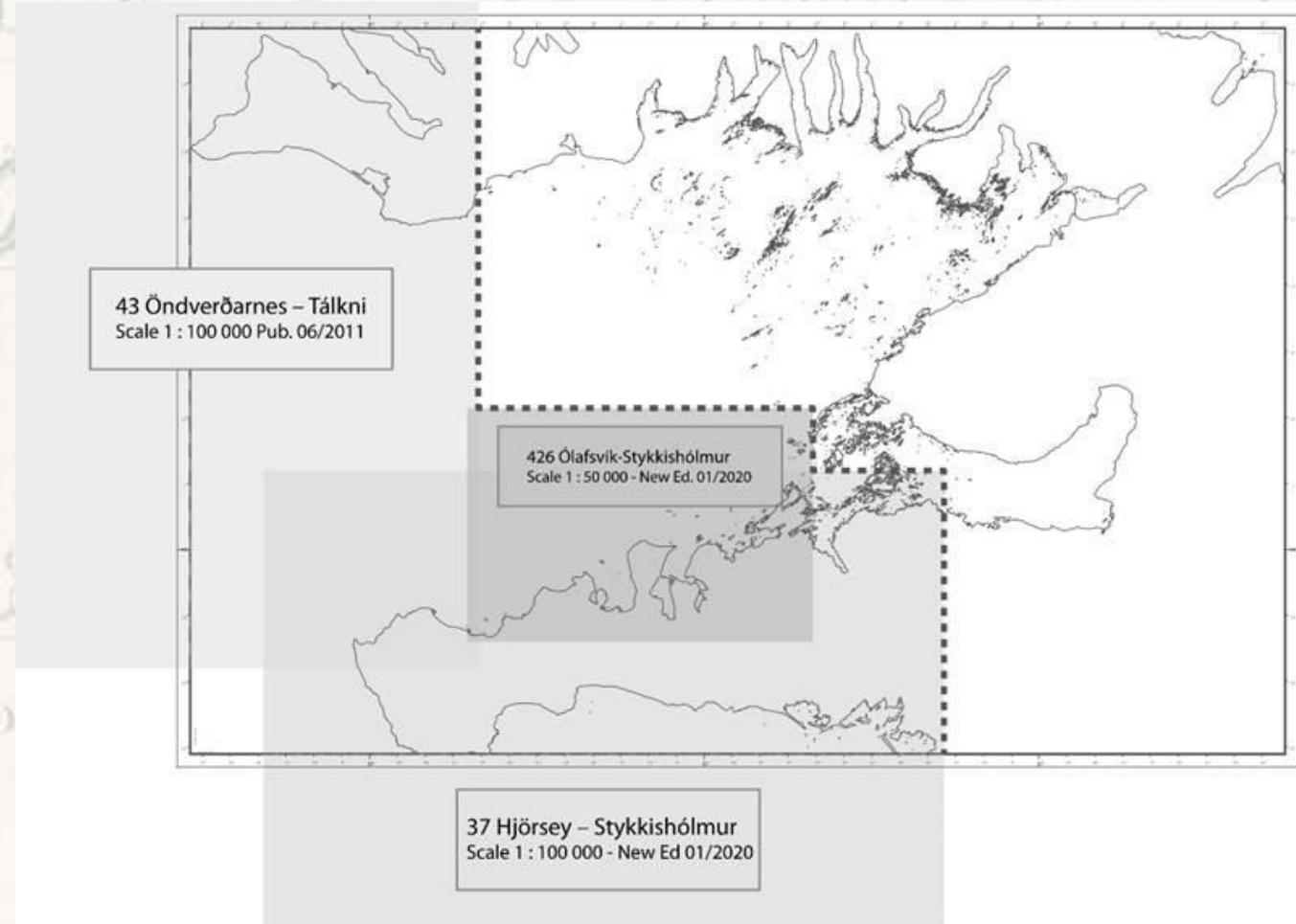
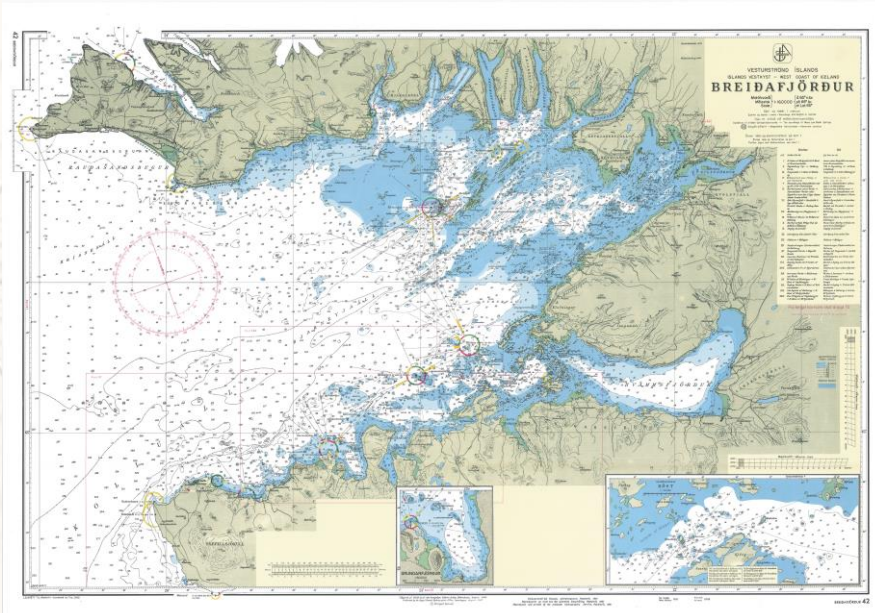
Surveys 2022

- Unsurveyed areas covered:
 - Six fjords on the south side of Ísafjarðadjúp and three in Jökulfirðir



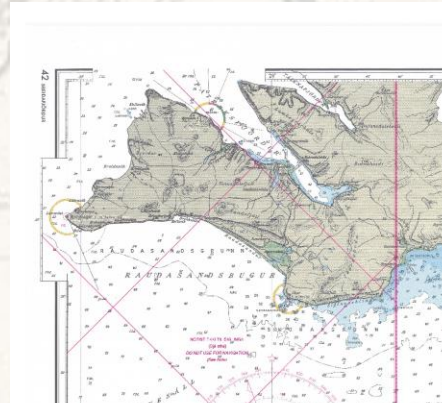
New charts & updates

- IS42 Breiðafjörður 1:160.000
 - Pub. 1946. NE 1979
 - Printed in 2004
updated acc. to latest NMs



New charts & updates

- IS42 Breiðafjörður
 - New Edition 2022

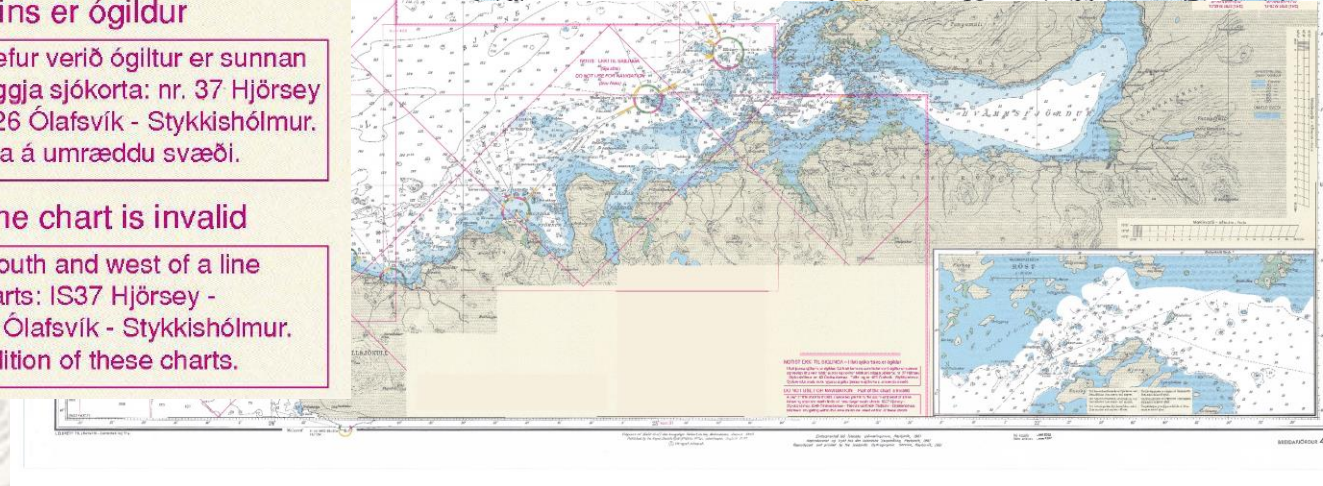


NOTIST EKKI TIL SIGLINGA – Hluti sjókortsins er ógildur

Hluti þessa sjókorts er ógildur. Sá hluti kortsins sem hefur verið ógiltur er sunnan og vestan línu sem fylgir austur og norður mörkum þriggja sjókorta: nr. 37 Hjörsey - Stykkishólmur, nr. 43 Öndverðarnes - Tálkni og nr. 426 Ólafsvík - Stykkishólmur. Sjófarendur skulu nota nýjustu útgáfu þessara sjókorta á umræddu svæði.

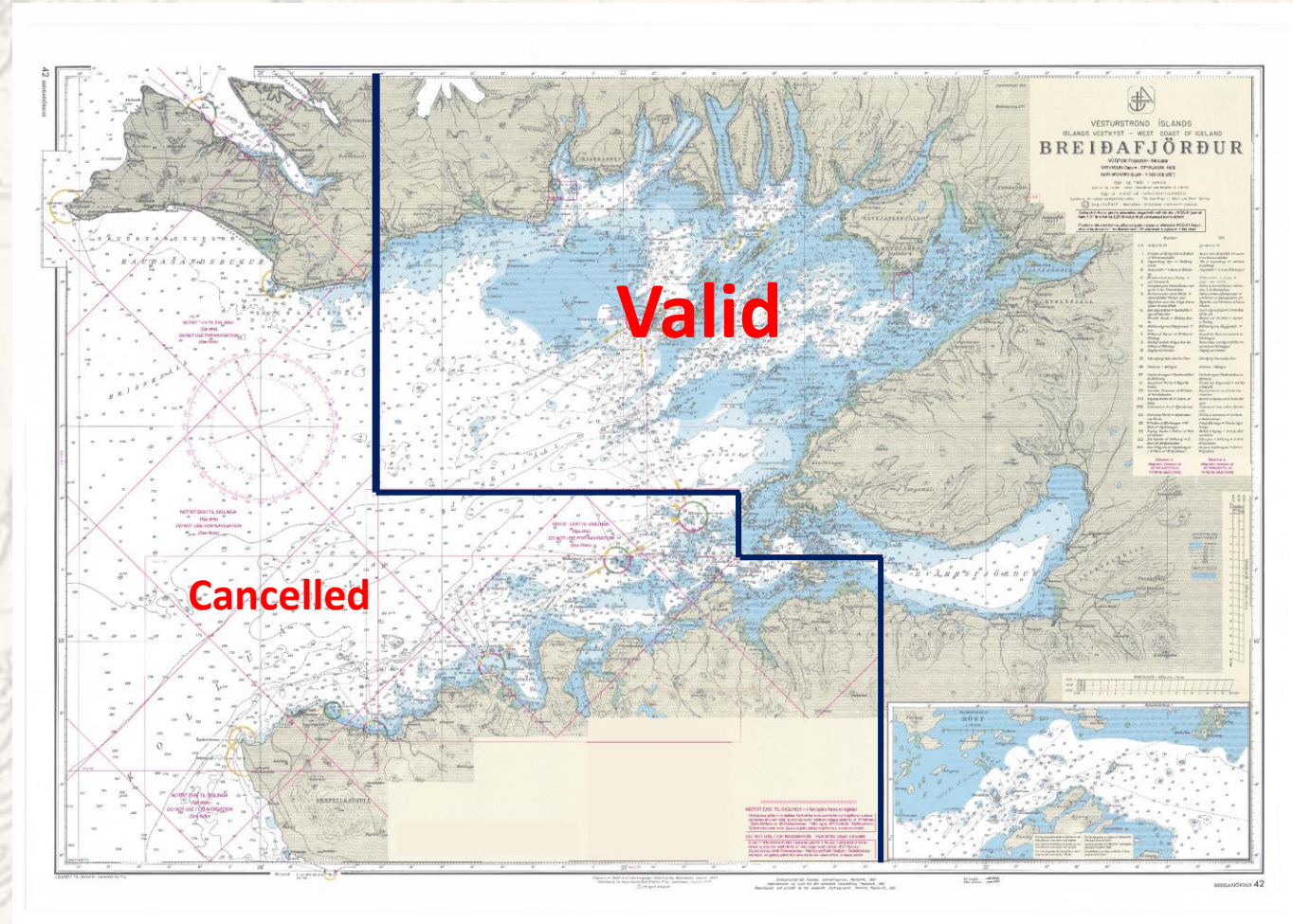
DO NOT USE FOR NAVIGATION – Part of the chart is invalid

A part of this chart is invalid. Cancelled part is to the south and west of a line following east and north limits of three larger scale charts: IS37 Hjörsey - Stykkishólmur, IS43 Öndverðarnes - Tálkni and IS426 Ólafsvík - Stykkishólmur. Mariners navigating within this area must use latest edition of these charts.



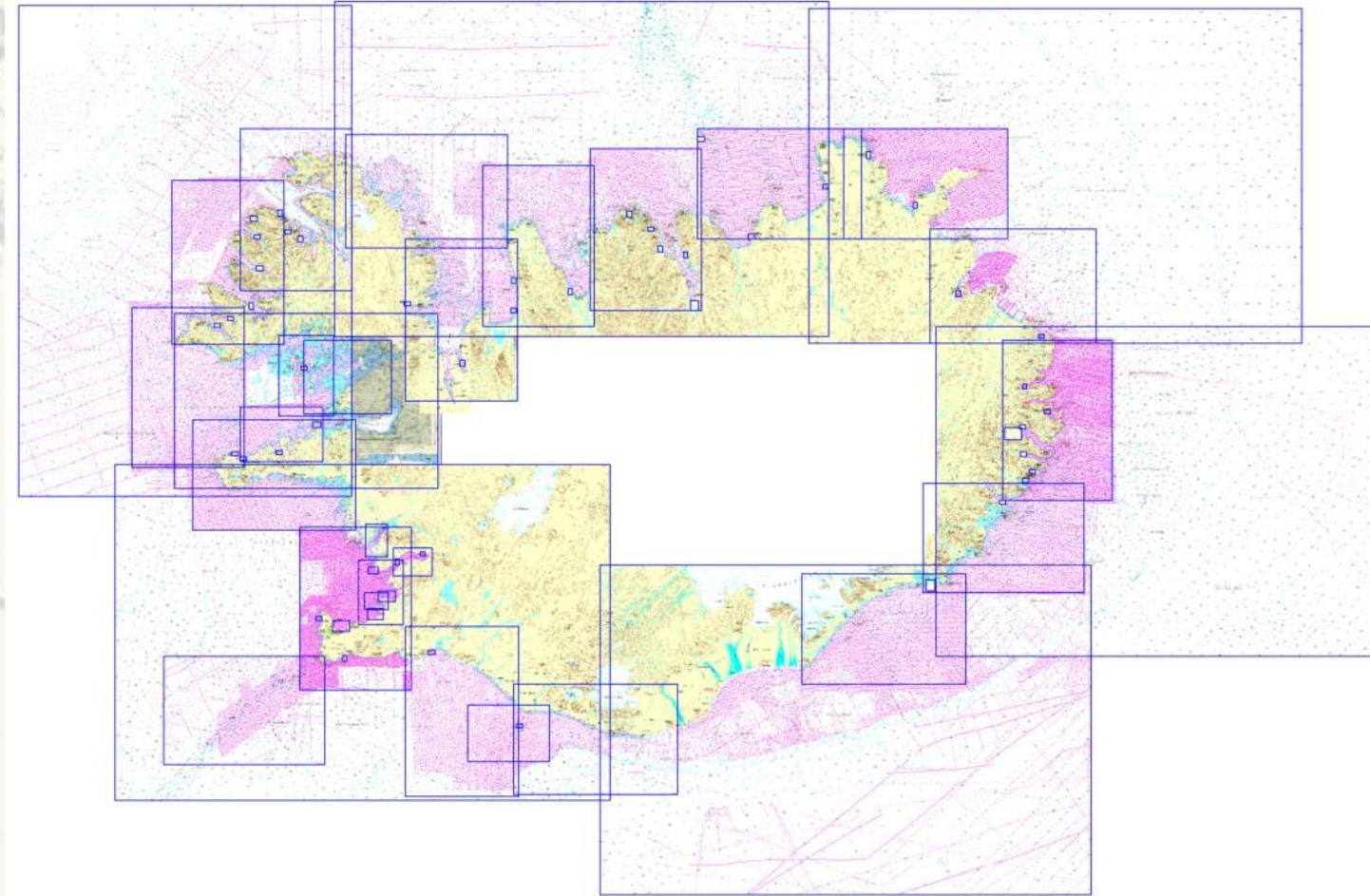
New charts & updates

- IS42 Breiðafjörður
 - New Edition 2022



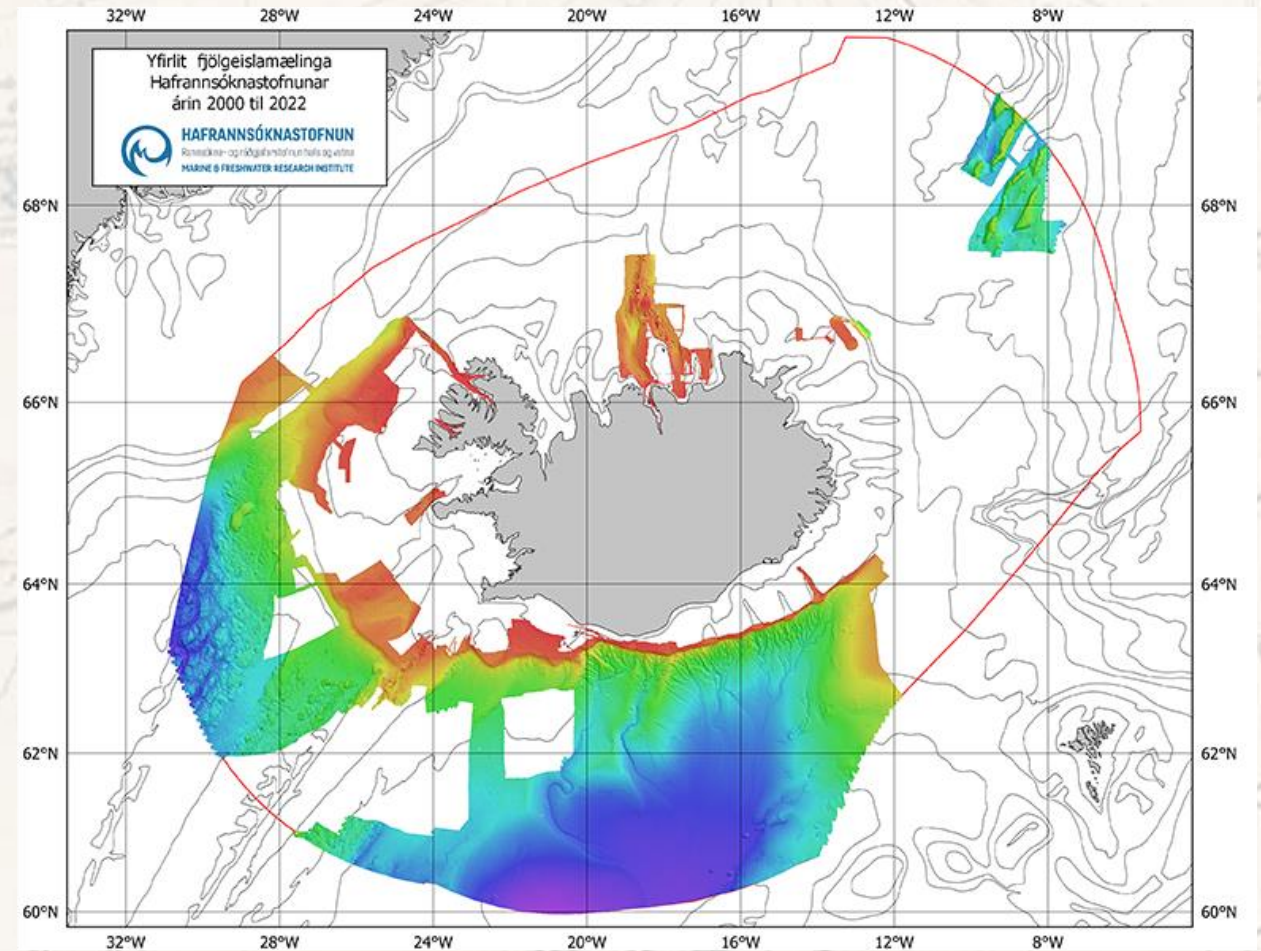
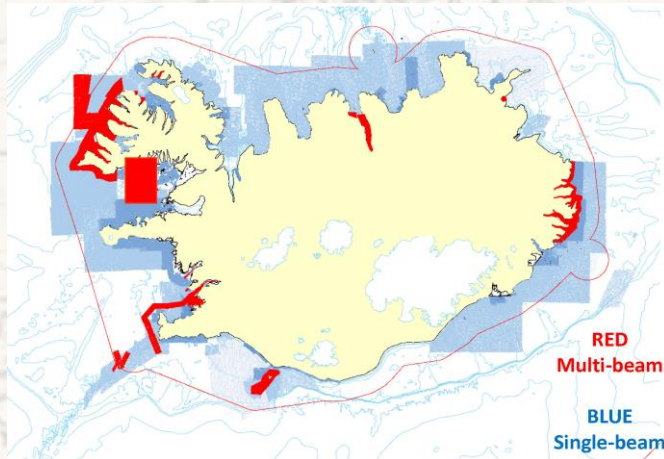
EMODnet Bathymetry

- Sounding dataset
 - Delivered in July 2022 as a collection of *.xyz export files.
- All processed depth data
 - used to compile Icelandic charts scales 1:300.000 and larger(June 2019)
- ... will be a big improvement to EMODnet Bathymetry
<https://portal.emodnet-bathymetry.eu/>

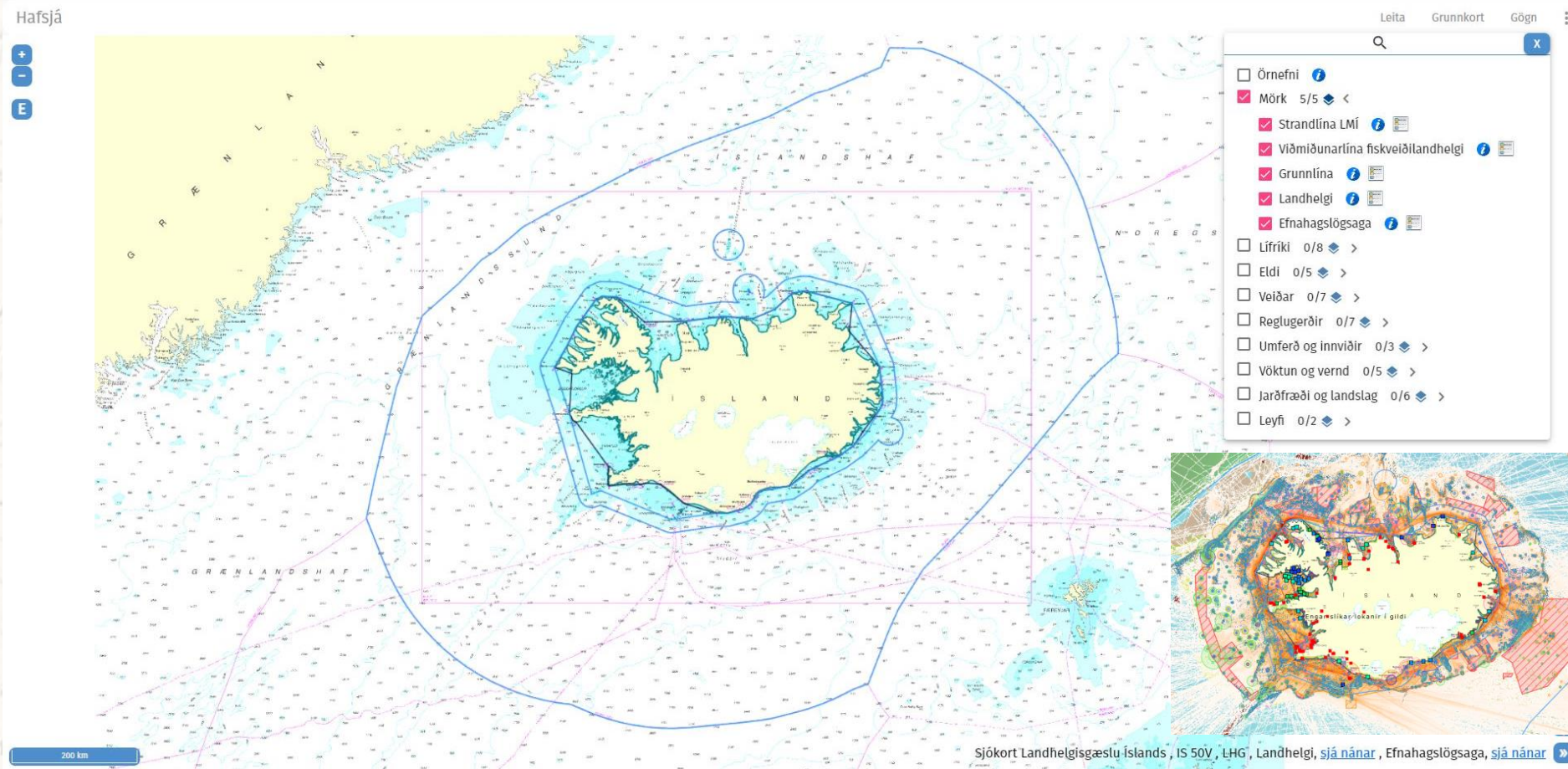


EMODnet Bathymetry

- Data from [MFRI](#) will be added to EMODnet Bathymetry
 - together with the data from Icelandic charts



Hafsjá





IHO

International
Hydrographic
Organization

ARHC12



Takk fyrir
Thank you

St. John's Canada | 13-16 September 2022