

HYDROGRAPHIC NATIONAL REPORT OF LITHUANIA

1. Hydrographic Office

Hydrographic activities are carried out by the Hydrographic Division (HD) of Maritime Department of Lithuanian Transport Safety Administration (LTSA).

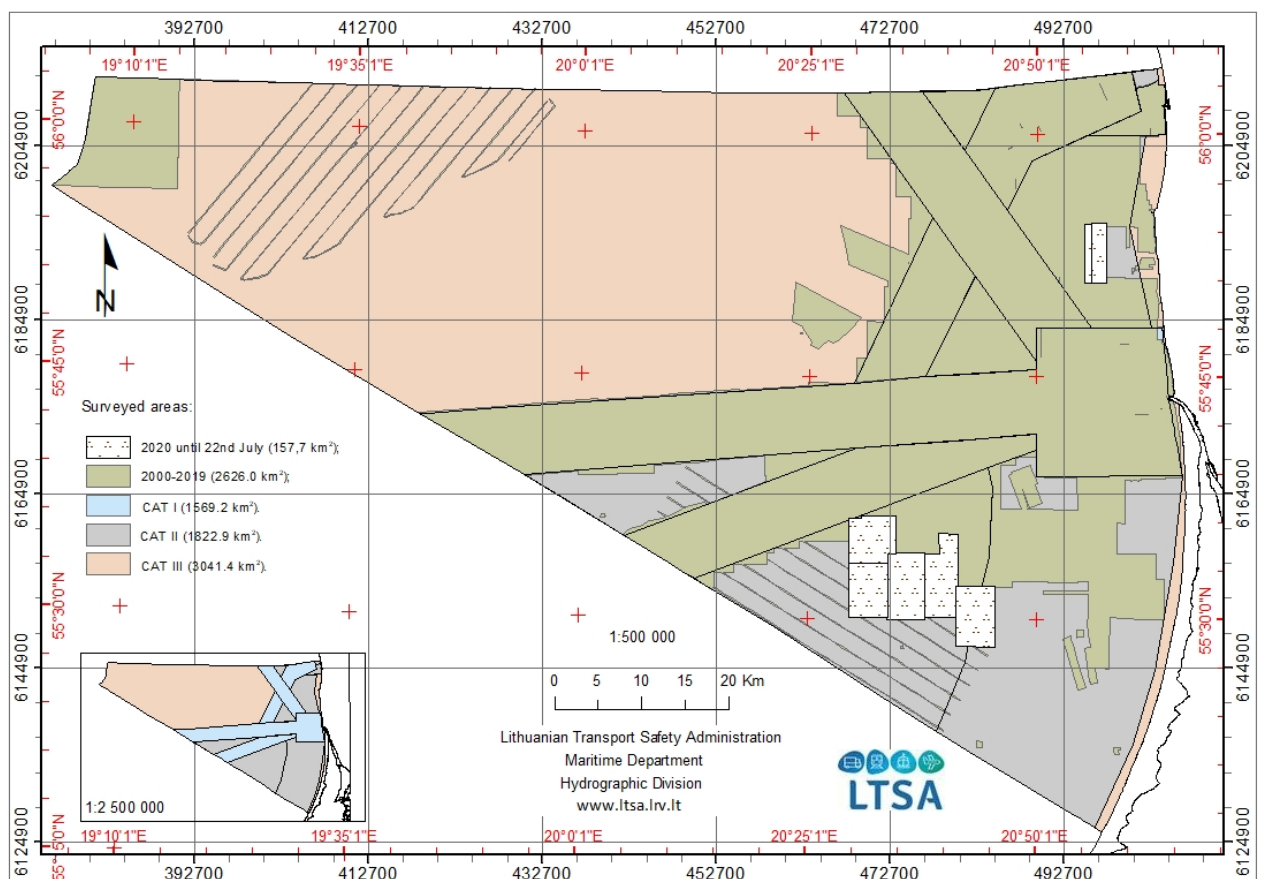
Ministry of Transport and Communications is the founder of LTSA. The institution is funded from state budget.

2. Surveys

For hydrographic surveying HD has a 20 m long catamaran type survey vessel “VARŪNA” equipped with Kongsberg EM 2040C multibeam echosounder.

Currently surveys are conducted according to HELCOM-BSHC harmonized hydrographic resurvey scheme in CAT II areas, as CAT I area is considered as completed.

Nautical surveying is carried out according to the IHO S-44 standard and the data is used in nautical charting.



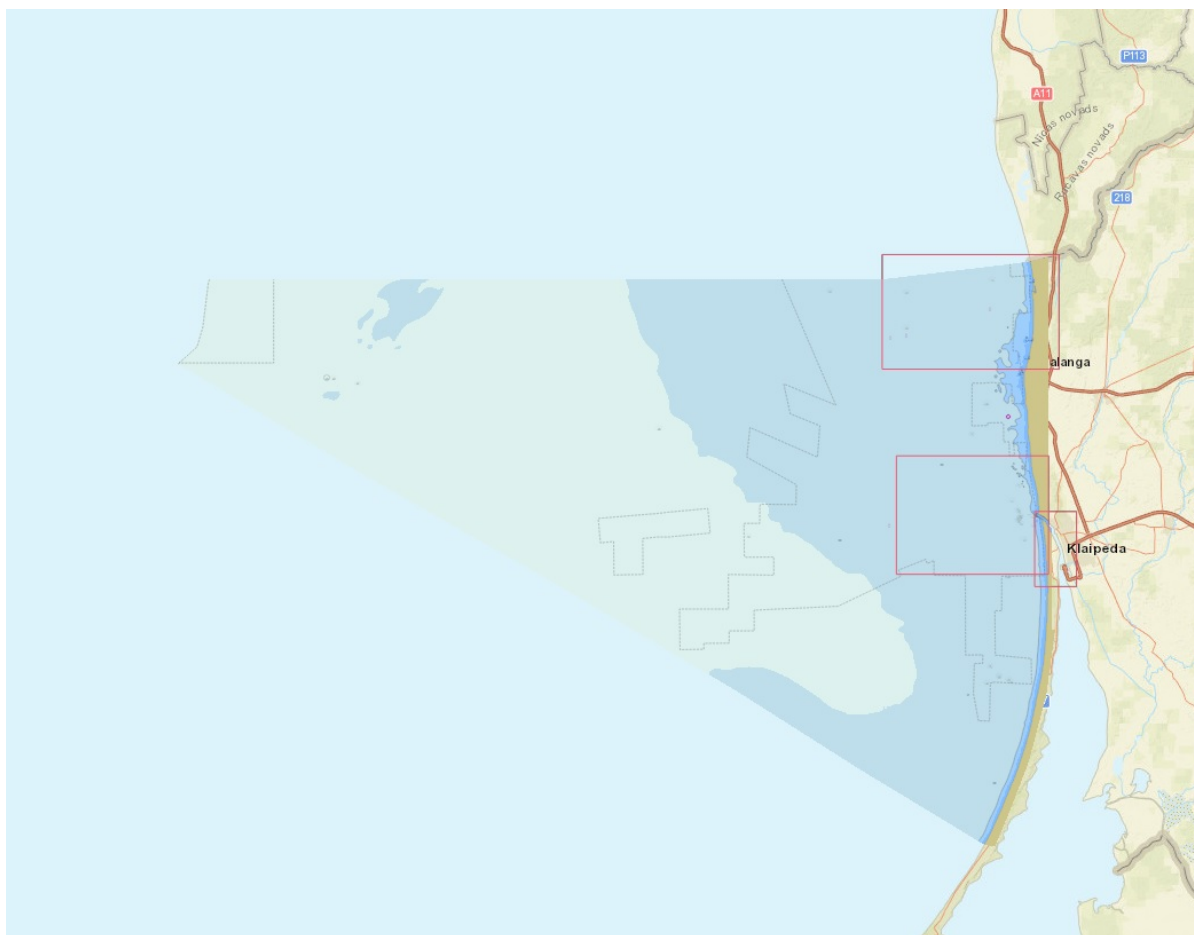
Up to July 2020 an area of **1568 km²** of main routes and approaches (CAT I) and **910 km²** of CAT II was surveyed.
In **2020** until 22nd July there was surveyed an area of **157.7 km²** (see fig. above).

3. New charts & updates:

ENCs

Overview of ENCs can be found on interactive chart server (<https://hydro.elta.lt>) (see fig. below).
Lithuanian waters are covered by four ENCs in three navigational purpose bands:

Navigational purpose	Chart No.
<i>General</i>	LT382001
<i>Harbour</i>	LT562510
<i>Harbour</i>	LT562520
<i>Berthing</i>	LT660710



One Coastal ENC and two Approach ENCs are in preparation.

Chart Distribution:

ENCs are distributed through PRIMAR and Seapilot AB.

RNCs

RNCs are not produced.

INT charts

INT charts are not produced.

National paper charts

Paper charts are produced from the same database as ENC's. Four paper charts are produced and three more are in preparation. Paper charts are not distributed.

4. New publications & updates:

New Publications

No new publications.

Updated Publications

Updated publication *Lithuanian List of Lights*;

Updated publication *Shipping Regulations*;

Publication *Notices to Mariners* is issued on a monthly basis.

Means of delivery

All publications can be found in digital form on the web page:

<https://ltsa.lrv.lt/en/sector-activities/water-transport/marine-transport/hydrography>

5. MSI

Existing infrastructure for transmission.

National GMDSS VHF network along coastline for local Navigational Warnings. Service is provided by Lithuania's Navy MRCC Klaipeda on VHF in Lithuanian and English.

NAVAREA 1 Baltic sea subarea Coordinator Sweden takes responsibility for NAVTEX Service over Lithuanian waters and messages are transmitted by Swedish transmitters (can be found on web: <http://sjofartsverket.se/baltico>).

All active Lithuanian navigational warnings can be found online on interactive web portal:

<https://hydro.eltsa.lt/nw/en.html>

New infrastructure in accordance with GMDSS Master Plan

GMDSS network covering areas A1 and A2. No new construction during last Year.

6. C-55

Status of hydrographic survey of waters out to the limits of the EEZ:

Status of surveys	Adequat (%)	Resurvey (%)	No survey (%)
Depths 0 - 200m	43.27	56.73	0
Depths > 200m	0	0	0

Status of nautical charting within the limits of the EEZ:

Chart coverage	Passage (%)	Coastal (%)	Port (%)
INT	0	0	0
RNC	0	0	0
ENC	0	76	81

Status of Paper Charts	
Paper charts with depths in metres (%)	100
Paper charts referenced to a satellite datum (%)	100

Navigational information (S-53):

MSI	Y/N	Comments on MSI
Local warning	YES	can be found on https://hydro.elta.lt/nw/en.html
Coastal warning	YES	Transmitted by NAVAREA I Baltic Sea Sub-area Coordinator Sweden. Can be found on https://hydro.elta.lt/nw/en.html
Nav warning	NO	Transmitted by NAVAREA I Baltic Sea Sub-area Coordinator Sweden.
Port warning	YES	can be found on https://hydro.elta.lt/nw/en.html

GMDSS implementation (IMO Publication 970 - GMDSS Handbook)

GMDSS	Y/N	Comments on GMDSS
Master Plan	YES	
Area A1	YES	MRCC Klaipeda
Area A2	YES	MRCC Klaipeda
Area A3	NO	
NAVTEX	YES	Transmitted by NAVAREA I Baltic Sea Sub-area Coordinator Sweden.
SafetyNet	NO	

7. Capacity Building

Offer of or demand for Capacity Building

Nothing to report

Training received, needed, offered

Nothing to report

Status of national, bilateral, multilateral or regional development projects with hydrographic component

Nothing to report

8. Oceanographic activities

Carried out by Maritime Research Department of Environmental Protection Agency (EPA):
<http://gamta.lt/cms/index?lang=en>

9. Other activities

Participation in IHO Working Groups

None

Meteorological data collection

Carried out by Lithuanian Hydrometeorological Service (under the Ministry of Environment):
<http://www.meteo.lt/en/>

Geospatial studies

Nothing to report

MSP/MSDI progress

The Maritime Spatial Planning (MSP) in Lithuania is included into the national legislation regulating spatial planning – Law on Territorial Planning and its secondary legal acts. The Comprehensive Plan of the Territory of Lithuania is complemented by the marine spatial solutions adopted on 11 June 2015 by the Parliament of Lithuania and is a legally binding document obligatory for the state governmental institutions. Part of the marine space (up to 20 m isobaths) also falls under the regulation of the Law of the Coastal Strip. MSP applies to the entire marine area of Lithuania including territorial waters and the exclusive economic zone (EEZ). A complete SEA for the MSP was elaborated including national and transnational consultations with Lithuanian stakeholders as well as with Sweden and Latvia (summarized information source: VASAB MSP report). All legal documents concerning MSP in national language can be found on web portal: https://map.tpdr.lt/tpdr-gis/index.jsp?action=tpdrPortal®_tpd_id=78417 .

With regards to SDI, The National Center for Remote Sensing and Geoinformatics „GIS-Centras“ (SE „GIS-Centras“) is the State Enterprise, responsible for update and distribution of the national official geographic databases. SE „GIS-Centras“ is in charge of management and development of the Lithuanian Spatial Information Infrastructure portal (www.geoportal.lt), which is the place also for marine spatial data.