



Ministry of Maritime Economy and Inland Navigation

Nowy Świat 6/12
00-400 Warsaw
Poland
<http://www.mgm.gov.pl>

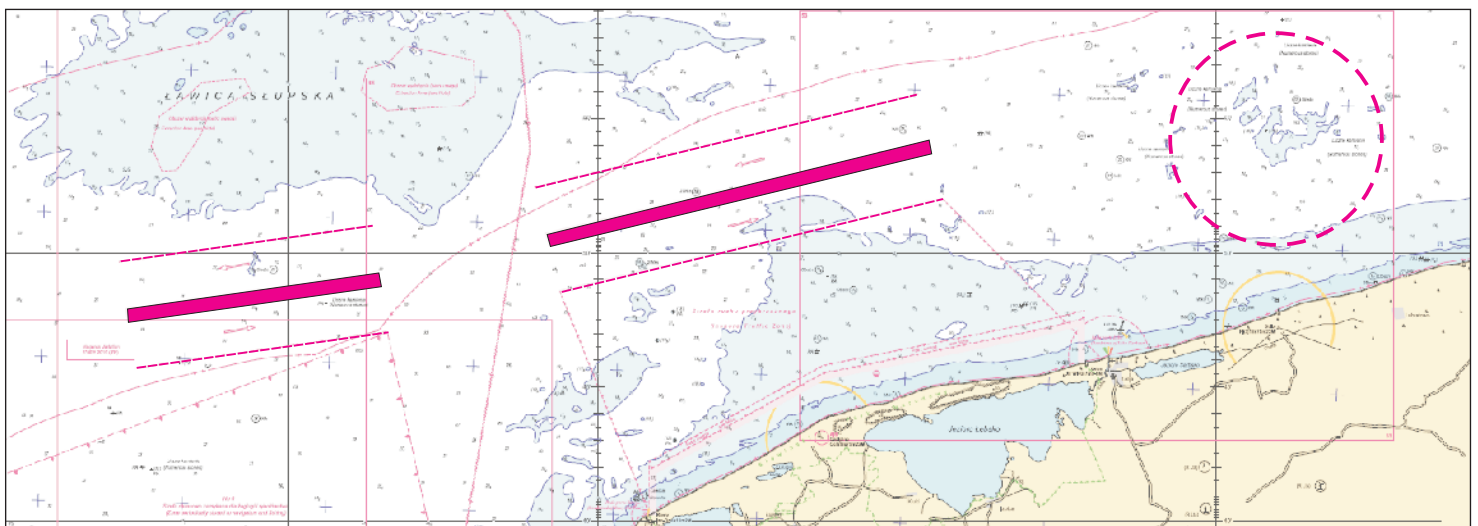


Amedment of the Traffic Separation Scheme "Słupska Bank"

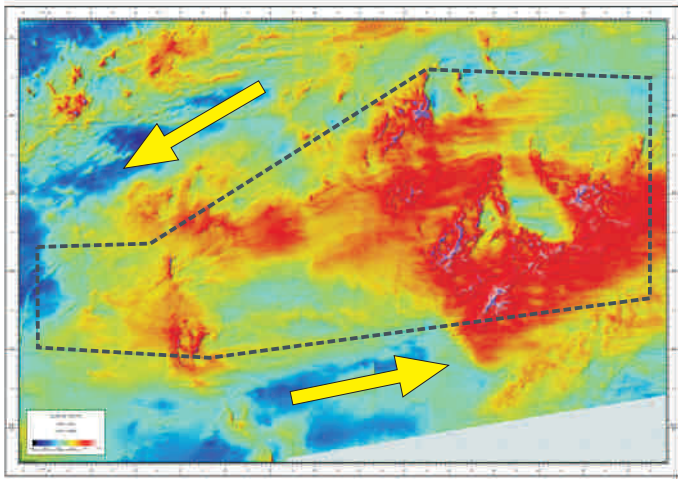
The **Traffic Separation Scheme "Słupska Bank"** was established by the Maritime Safety Committee at its 87th session and it came into force on *1 December 2010*, as disseminated by means of **COLREG.2/Circ.61**.

The **TSS "Słupska Bank"** regulates traffic of ships navigating along the Polish coast in close proximity to the environmentally sensitive and shallow waters of the Słupsk Bank.

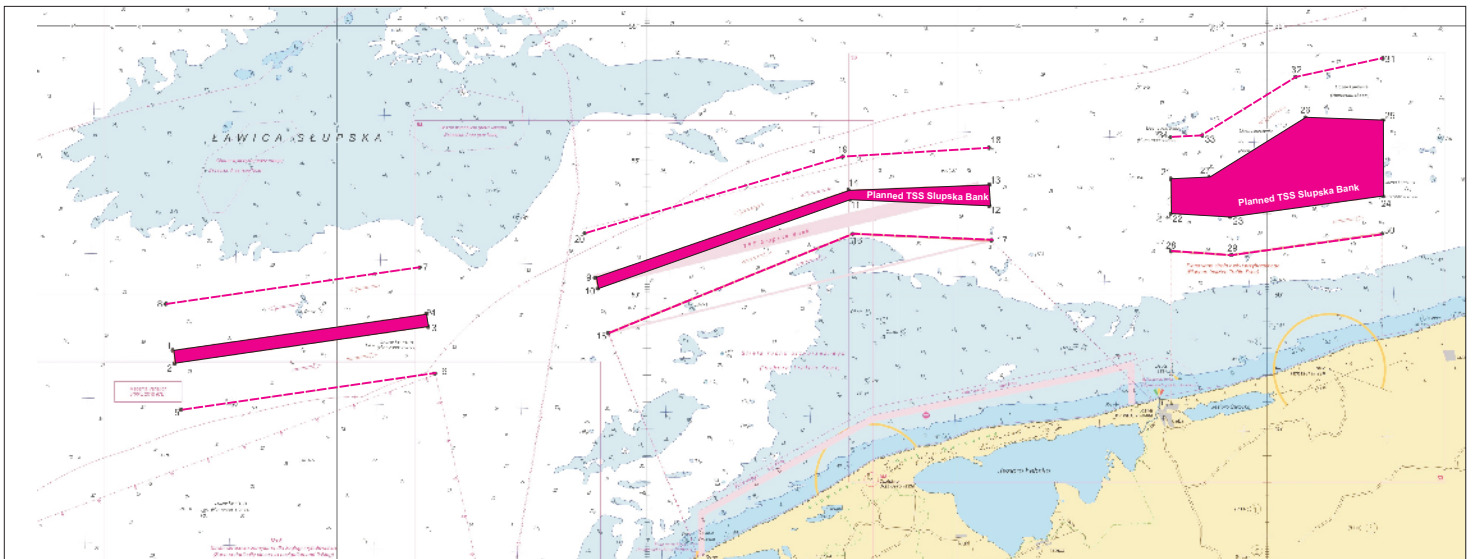
On *1 June 2013*, a 230-metre long bulk carrier ran aground in the area of the shallows at the eastern extension of the **TSS "Słupska Bank"**, north of the popular seaside tourist resort and a small fishing port of Łeba.



The hydrographic surveys carried out after this accident confirmed the need for implementation of appropriate measures to prevent further accidents in the area of the shallows east of the **TSS "Slupska Bank"**



Having considered possible methods of reducing the risk of ship groundings in the area, the Polish Maritime Administration decided to establish a new section of the **TSS "Slupska Bank"** with two lanes designed to separate opposing traffic flows and to bypass the area of detected shallows where a traffic separation zone is to be established.



The existing eastern section of the **TSS "Slupska Bank"** is to be modified in such a way as to align its traffic lanes with the traffic lanes of the new section of the TSS.



The existing inshore traffic zone (ITZ) is to be adjusted in accordance with the modification of the current eastern section of the **TSS "Slupska Bank"**. The new ITZ will supplement the planned new eastern section of the TSS.

The planned routing measures will enhance the safety of ships navigating along the Polish coast and at the same time reduce the potential threats for the environmentally sensitive area of the **Slupsk Bank** and the **Stowiński National Park**.



The Slupsk Bank forms a part of the **EU Natura 2000** network and is a **HELCOM Marine Protected Area** to its important role as a wintering area for waterbirds and other environmental assets.

The **Stowiński National Park** is included in the **UNESCO World Network of Biosphere Reserves**. The park covers three lakes, a two-mile wide stretch of coastal waters and the largest stretch of moving sand dunes in Europe.

New shipping routes in **TSS "Slupska Bank"** were expected to be established at the beginning of 2021 after the 102nd session of the IMO Maritime Safety Committee. Due to COVID-19 and the cancellation of the IMO meeting, the approval and announcement of new routes depends on the date of the next IMO MSC meeting.