

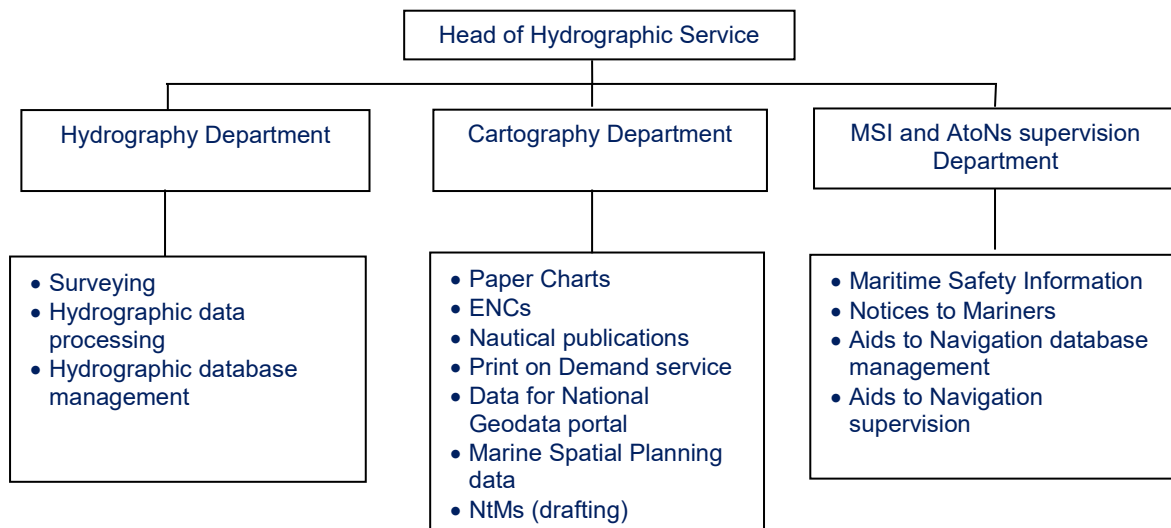
Maritime Administration of Latvia
Hydrographic Service
National Report to Baltic Sea Hydrographic Commission
2021

Executive summary

The Report gives an overview of the main activities of Hydrographic Service of Maritime Administration of Latvia in the period of 2020-2021.

1. Hydrographic Service

Hydrographic Service (HS) is one of the Departments of the Maritime Administration of Latvia (MAL). MAL is a civil organisation - MAL is a state limited liability company supervised by the Ministry of Transport that fulfills functions according to the Law on Maritime Administration and Maritime Safety. HS organisational structure and main functions:



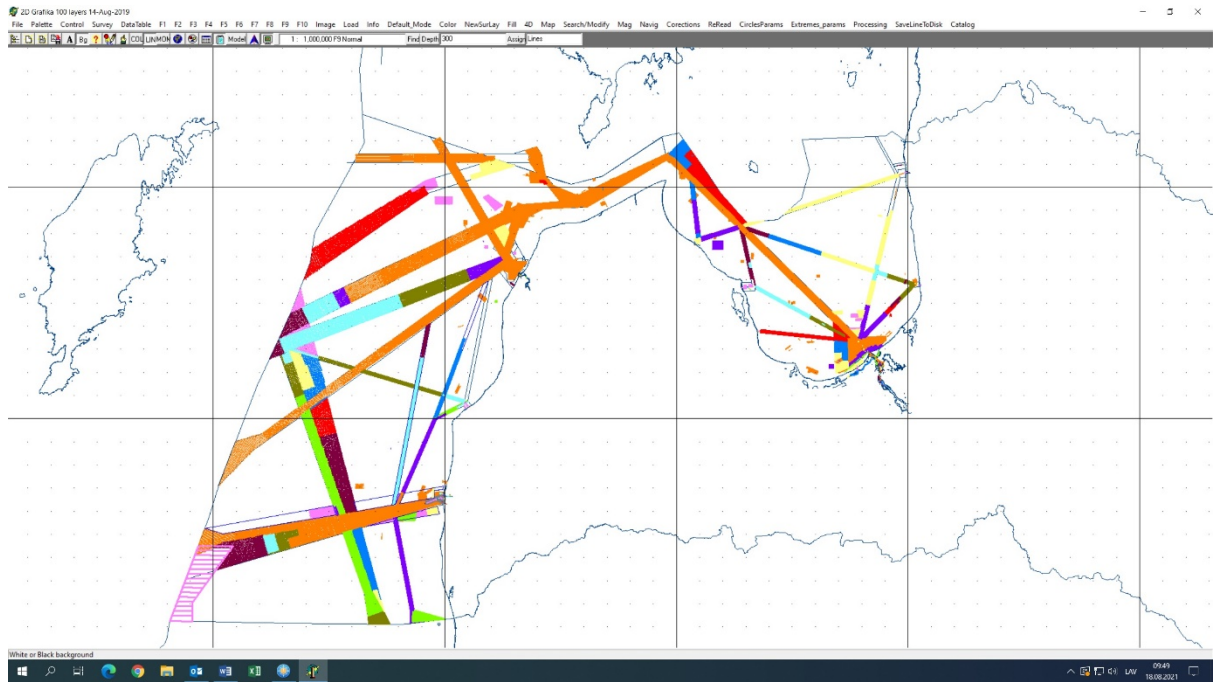
2. Hydrographic Surveys

MAL provided surveys according to HELCOM Hydrographic re-Survey plan for Baltic Sea and in port areas in 2020-2021. Surveys are carried out according the IHO S-44 standards. Survey data is processed and available for Hydrography and Cartography Departments via Hydrographic database.

Coverage of hydrographic surveys in 2021 (until August)

295 km² - on HELCOM routes in the Central Baltic and in the Gulf of Riga (CAT 2, CAT 3);

3.0 km²- Harbour areas



Surveyed areas: 2001 to 2012- orange, 2013-magenta, 2014-green, 2015- dark green, 2016-cyan, 2017-dark red, 2018-red, 2019-blue, 2020-yellow,2021-pink.

Survey vessels

The Hydrography Division (12 employees) provide surveying, data collecting and post-processing.

Hydrographic vessels owned by MAL:

Kristiāns Dāls - 19 m twin hull survey vessel;

Sonārs - 7.25 m single-hull survey boat for port and coastal areas survey;

Blessor 505 - 5.5 m single-hull survey-boat on rivers, port and shallow coastal areas;

(More detailed information on hydrographic vessels are given in Annex 1.)

3. New charts & updates

Paper Charts

Latvian waters are fully covered with the charts of relevant navigational bands. All paper charts are updated by monthly Notices to Mariners and available in Print on Demand (POD) system.

Status of the nautical charts within the limits of the Latvian EEZ:

Navigational Purpose/Scale	A Charts complying to IHO standard S-4 (Coverage %)	B Raster navigational charts complying IHO standard S-61 (Coverage %)	C ENCs (Coverage %)
Offshore passage/Small*	-	-	-
Landfall and Coastal passage/Medium	100	0	100
Approaches and Ports/Large	100	0	100
Percentage of Group A showing depths in metres	100		
Percentage of Group A referenced to a satellite datum	100		

* Latvia has no offshore passage / small scale charts.

See Annex 2 for detailed information on Chart and ENC coverage.

INT charts

MAL produces 22 paper charts, including 19 INT charts which covers most of the Latvian waters.

New editions of INT charts:

2020 (August – December) – 2 new editions.

2021 (January - September) - 2 new editions, 1 new chart.

National charts

New editions of national charts:

2020 (August – December) - 0.

2021 (January - September) – 1 new edition (National paper charts are produced in accordance with IHO standard S-4 requirements.)

ENCs

Latvia produces 26 ENCs in usages 2 to 6.

New editions / ENCs:

2020 (August – December) – 4 new editions, 9 new ENCs (replacements).

2021 (January - September) – 2 new editions, 3 new ENCs (replacements).

Usage 2 (General) – 3;

Usage 3 (Coastal) – 9;

Usage 4 (Approach) – 2;

Usage 5 (Harbour) – 1.

Usage 6 (Berthing) – 3;

ENCs are updated on a monthly NtMs basis. Temporary (T) and preliminary (P) notices to mariners are included into ENCs.

ENC distribution

MAL has ENC distribution agreements with PRIMAR.

RNCs

RNCs are not produced by MAL.

Other charts

-

4. New publications & updates

New edition of *Baltic Sea Pilot, Latvian Coast* was published in February 2021.

Nautical publications are updated monthly with Notices to Mariners and are available for download at MAL website. All digital copies of nautical publications are free of charge.

5. MSI

Existing infrastructure for transmission.

National GMDSS VHF network along coastline for broadcasting of local Navigational Warnings. Service is provided by the Maritime Rescue Coordination Centre of the Latvian Naval Forces Coast Guard Service (MRCC Riga) twice per day in English and Latvian. Urgent Navigational Warnings are transmitted immediately on receiving them and then included in next MSI broadcast.

NAVAREA I Baltic Sea Sub-Area Co-ordinator - Sweden is providing NAVTEX Service over Latvian waters. Navigational Warnings and other messages for Latvian waters are transmitted by Swedish and/or Estonian transmitters. Received NAVTEX messages are available on web at: www.navtex.lv.

Notices to Mariners are published monthly. Each year's first edition of NtM is Shipping Regulations, which contains updated information regarding ports, reporting requirements, areas prohibited and area restricted for navigation, MSI.

New infrastructure in accordance with GMDSS Master Plan.

Nothing to report.

6. C-55

MAL informs IHO on updates.

7. Capacity Building

One hydrographer in 2020 received Field Proficiency Certificate after completing CAT B course Field Proficiency period organized by Skilltrade BV in Ijmuiden, Netherlands.

One hydrographer in 2020 received professional master's degree in Geomatics with the qualification of an engineer in geodesy and cartography after completing studies in Riga Technical University.

8. Oceanographic activities

None

9. Other activities

INSPIRE directive

In conformity with INSPIRE directive, MAL takes part in the geospatial data sharing through the Geoportal of Latvia, which is the hub to the INSPIRE Geoportal. MAL HS has already provided both - metadata and geospatial data sets to relevant authorities.

National Spatial Planning

The Government of Latvia approved the National MSP on 14.05.2019.

IHO Working Groups

MAL is participating in NCWG, BSICCWG, TEWG, HSWG and BSHC.

Annex 1

Detailed information regarding hydrographic vessels.

Vessel KRISTIĀNS DĀLS.



MMSI: 275027000

Call sign: YLAD

Home port: Riga, reg.Nr. 0123

Twin-hull Al 19.8x6.7x1.3; GT 33t; DWT 9t

Engine: 2x165kW IVECO, aux.: NANNI DIESEL 4.220 20 kW

Speed: 11 knots

Crew: 4

Autonomy: 3 days

Built: 2001, FINLAND UUDENKAUPUNGIN TYOVENE OY.

Nav. equipment: Furuno FRS 1000 - radar/plotter/sounder , JLR-21 GPS Compass, Furuno VHF FM 8500 - radiotelephone

Survey equipment: Reson SeaBat 7101 multibeam echosounder, TRIMBLE GNSS SPS 855 with TRIMBLE GSM MSN 940 modem for RTK TRIMBLE VRS Now TEC corrections or Marinestar, Hemisphere Crescent VS110 GPS compass, Leica 530 RTK GPS, Octans EM 1000 motion sensor, SVP-15 sound velocity probe, GeoAcoustics Dual Frequency Side Scan Sonar.

Survey boat SONĀRS – model Arronet 23.5 C



MMSI: 275041111

Call sign: YL2893

Home port: Riga, reg.Nr. 3100

Mono-hull Al 7.25m x 2.4m x 0.6m;

Engine: 110.3kW YAMAHA F150ATE, aux: Honda 0.9kW

Navigation equipment: FURUNO GP-32 GPS, ICOM-M323 VHF, FURUNO 1715 RADAR, SATELLITE EPIRB ACR RLB-38

Safety equipment: ARIMAR inflatable liferaft 4 pers., MARINE POOL automatic lifejackets, lifebuoys.

Speed max: 32 knots

Crew: 2+1 (max 8 pers.)

Autonomy: 1 day

Built: 2014, Arronet Teknik AB, Sweden

Survey equipment: Reson SeaBat T20-P multibeam system; positioning system TRIMBLE SPS 461 with TRIMBLE GSM MSN 940 modem for RTK TRIMBLE VRS Now TEC corrections or Marinestar; Sound velocity probe SVP-15, SVP-71; IMU SMC-108 motion sensor; Marine Magnetism Explorer Mini Marine Magnetometer; Teledyne PDS 3.9.5.2 software.

Motorboat BLESSER 505 WA.



Home port: Riga; **reg.Nr.:** LV-7323

Mono - hull plastic; 5.05m x 2.40m x 0.40m

Engine: 2 x 50HP Suzuki; **aux:** Honda 0.9kW

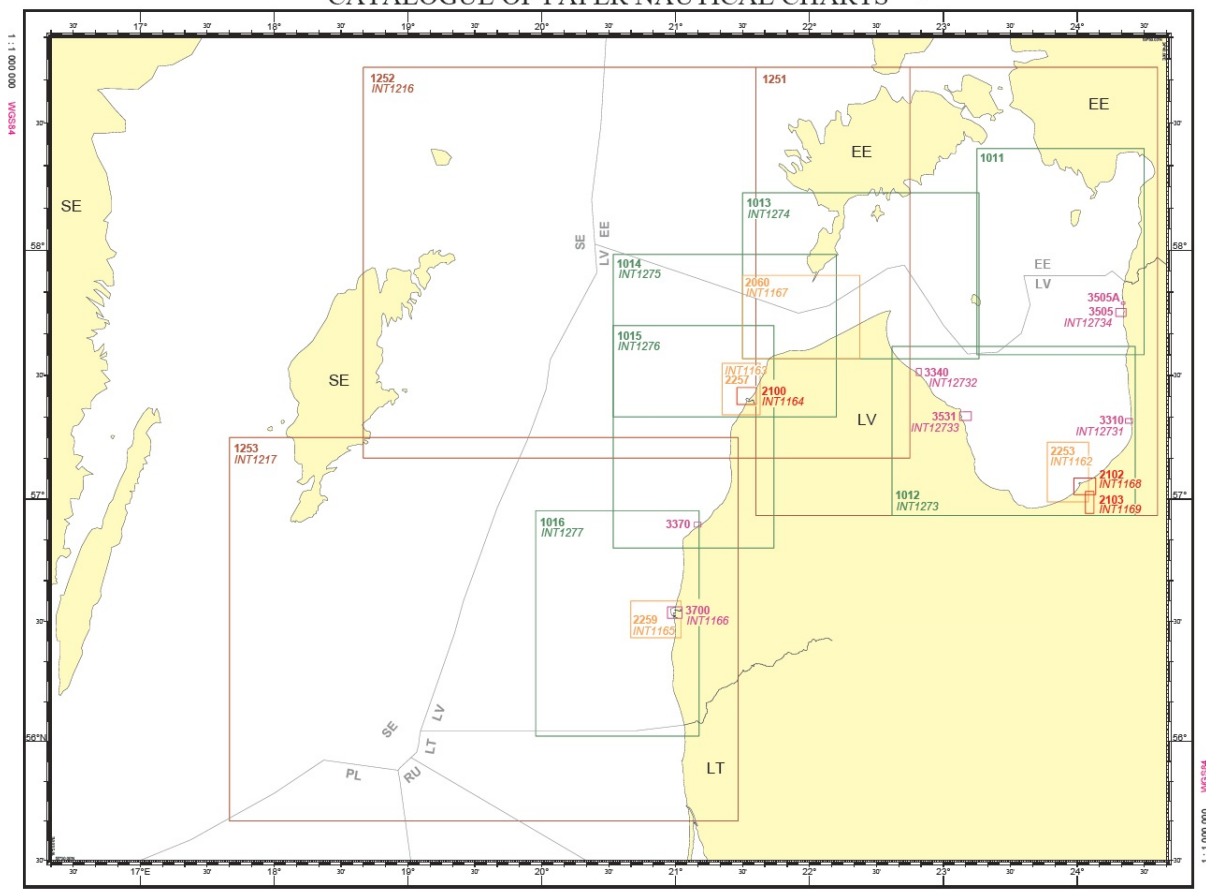
Speed max: 16 knots

Crew: 2+1

Autonomy: 1 day

Survey equipment: Deso Atlas 15 singlebeam; Hemisphere Crescent VS110 GPS compass; Sound velocity probe SVP-15, Marine Magnetics Explorer Mini Marine Magnetometer, HYPACK software.

PAPĪRA NAVIGĀCIJAS KARŠU KATALOGS
CATALOGUE OF PAPER NAUTICAL CHARTS



ENC COVERAGE

