

# HYDROGRAPHIC NATIONAL REPORT OF LITHUANIA

## 1. Hydrographic Office

Hydrographic activities are carried out by the Hydrographic Division (HD) of Maritime Department of Lithuanian Transport Safety Administration (LTSA - <https://ltsa.lrv.lt/>).

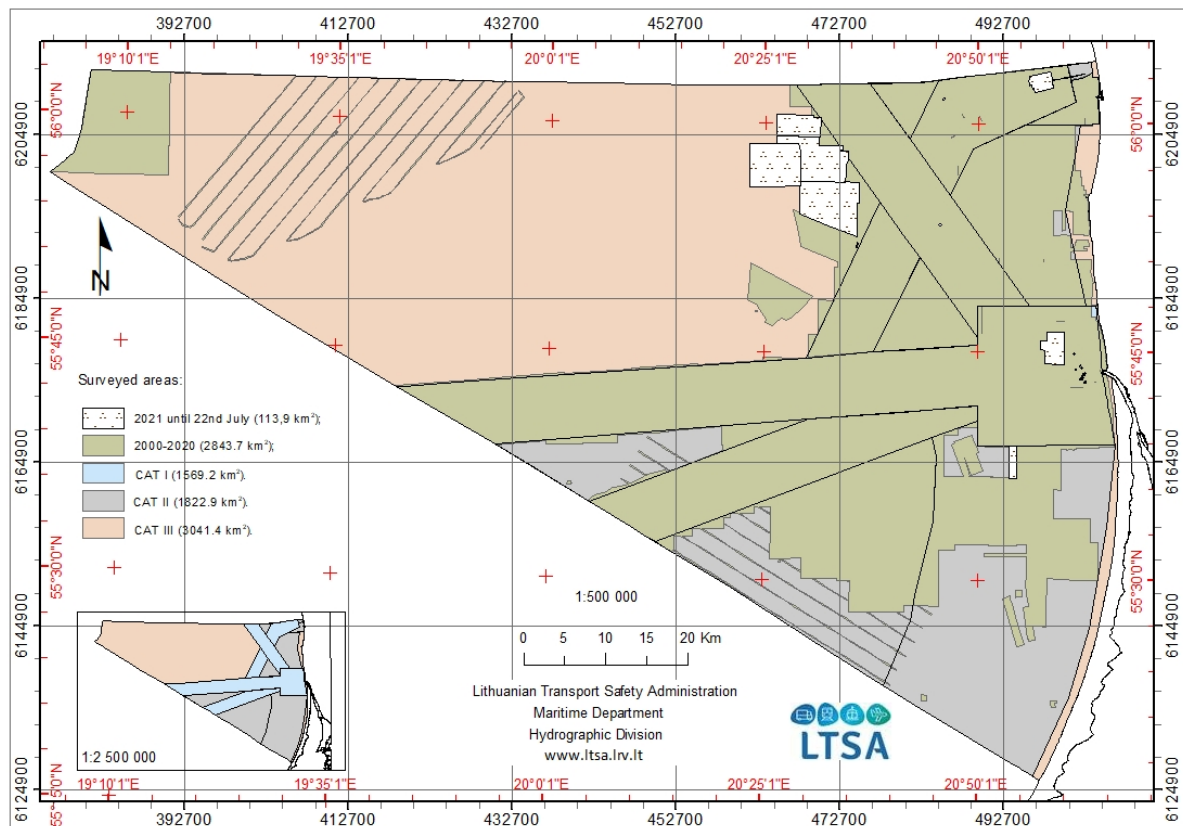
Ministry of Transport and Communications is the founder of LTSA. The institution is funded from state budget.

## 2. Surveys

For hydrographic surveying HD has a 20 m long catamaran type survey vessel “VARŪNA” equipped with Kongsberg EM 2040C multibeam echosounder.

Currently surveys are conducted according to HELCOM-BSHC harmonized hydrographic resurvey scheme with main focus being on future planned wind park construction sites in CAT III areas.

Nautical surveying is carried out according to the IHO S-44 standard and the data is used in nautical charting.



Up to July 2021 an area of **1568 km<sup>2</sup>** of main routes and approaches (CAT I) and **973 km<sup>2</sup>** of CAT II was surveyed.

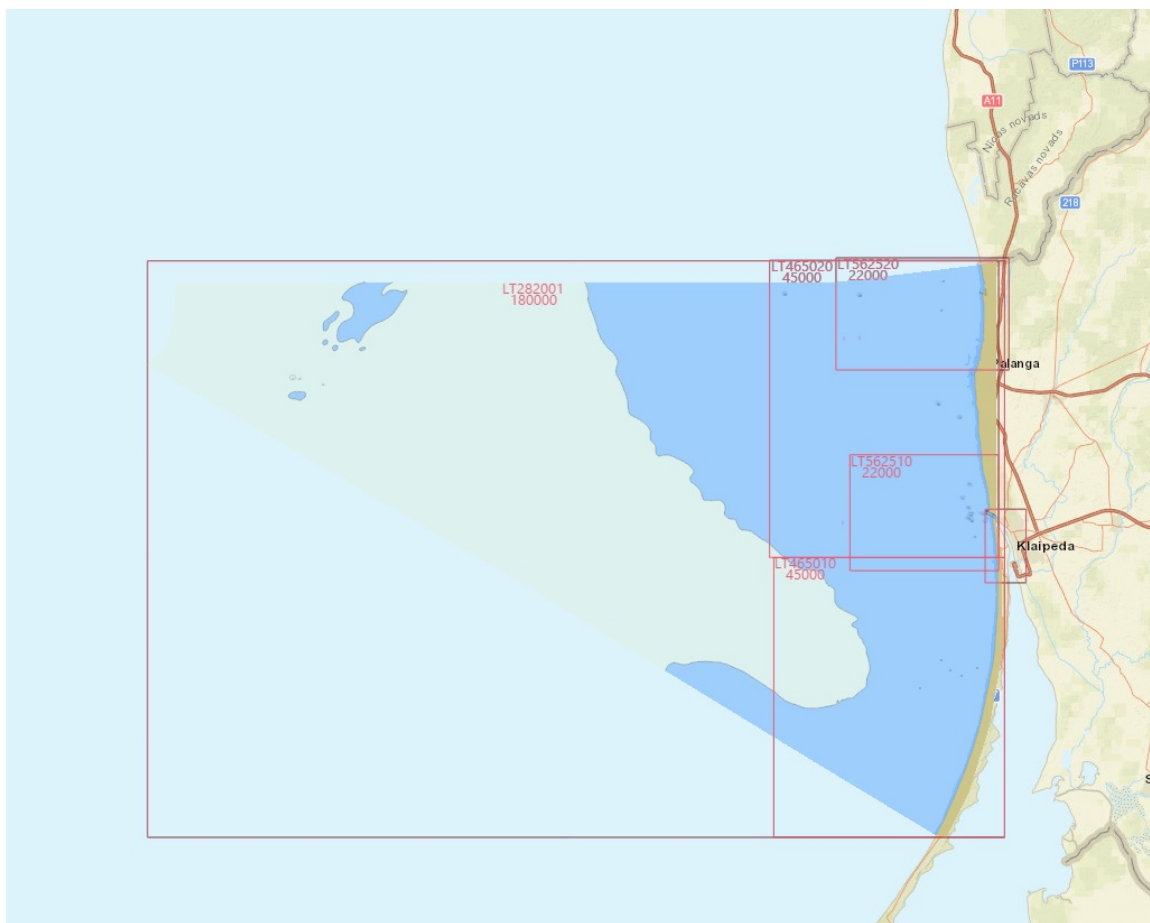
In **2021** until 22nd July there was surveyed an area of **113.9 km<sup>2</sup>** (see fig. above).

### 3. New charts & updates:

#### ENCs

Overview of ENCs can be found on interactive chart server (<https://hydro.eltsa.lt>) (see fig. below).  
Lithuanian waters are covered by six ENCs in four navigational purpose bands:

Navigational purpose	Chart No.
<i>General</i>	LT282001
<i>Approach</i>	LT465010
<i>Approach</i>	LT465020
<i>Harbour</i>	LT562510
<i>Harbour</i>	LT562520
<i>Berthing</i>	LT660710



Two Coastal ENCs are in preparation.

#### **Chart Distribution:**

ENCs are distributed through PRIMAR.

#### **RNCs**

RNCs are not produced.

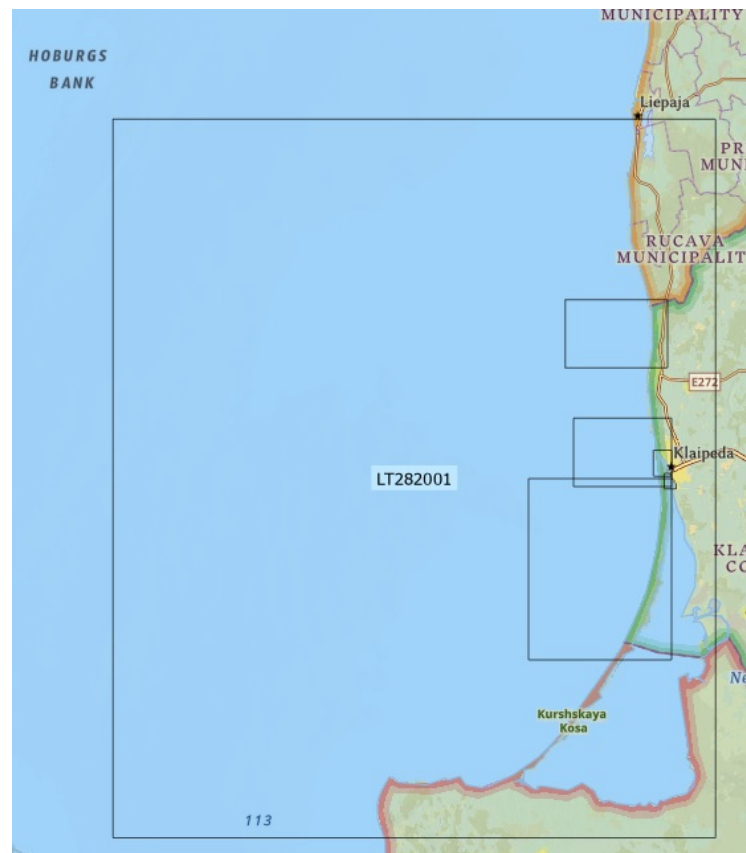
#### **INT charts**

INT charts are not produced.

## National paper charts

Overview of paper charts can be found on interactive chart server (<https://hydro.eltsa.lt>) (see fig. below). Lithuanian waters are covered by five paper charts in four navigational purpose bands:

Navigational purpose	Chart No.
<i>General</i>	LT282001
<i>Approach</i>	LT465010
<i>Harbour</i>	LT562510
<i>Harbour</i>	LT562520
<i>Berthing</i>	LT660710



Paper charts are produced from the same database as ENCs. Five paper charts are produced and three more are in preparation. Paper charts are distributed for personal use cost free by filling in a request form which can be found on interactive chart server.

## 4. New publications & updates:

### New Publications

New publication *INTI Symbols, Abbreviations, Terms used on Paper Charts* issued.

### Updated Publications

Updated publication *Lithuanian List of Lights*;

Updated publication *Shipping Regulations*;

Publication *Notices to Mariners* is issued on a monthly basis.

### Means of delivery

All publications can be found in digital form on the web page:

<https://hydro.eltsa.lt/portal/apps/sites/#/hidrografine-veikla/pages/leidiniai>

## 5. MSI

### Existing infrastructure for transmission.

National GMDSS VHF network along coastline for local Navigational Warnings. Service is provided by Lithuania's Navy MRCC Klaipeda on VHF in Lithuanian and English.

NAVAREA 1 Baltic sea subarea Coordinator Sweden takes responsibility for NAVTEX Service over Lithuanian waters and messages are transmitted by Swedish transmitters.

All Lithuanian navigational warnings can be found online on interactive web portal:

<https://hydro.eltsa.lt/nw/en.html>

### New infrastructure in accordance with GMDSS Master Plan

GMDSS network covering areas A1 and A2. No new construction during last Year.

## 6. C-55

Status of hydrographic survey of waters out to the limits of the EEZ:

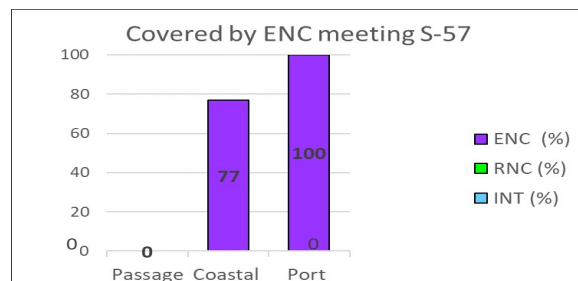
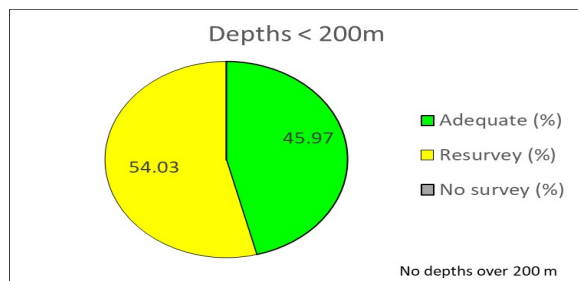
Status of surveys	Adequat (%)	Resurvey (%)	No survey (%)
Depths 0 - 200m	45.97	54.03	0
Depths > 200m	0	0	0

Status of nautical charting within the limits of the EEZ:

Chart coverage	Passage (%)	Coastal (%)	Port (%)
INT	0	0	0
RNC	0	0	0
ENC	0	77	100

### Status of Paper Charts

Paper charts with depths in metres (%)	100
Paper charts referenced to a satellite datum (%)	100



Navigational information (S-53):

MSI	Y/N	Comments on MSI
Local warning	YES	can be found on <a href="https://hydro.eltsa.lt/nw/en.html">https://hydro.eltsa.lt/nw/en.html</a>
Coastal warning	YES	Transmitted by NAVAREA I Baltic Sea Sub-area Coordinator Sweden. Can be found on <a href="https://hydro.eltsa.lt/nw/en.html">https://hydro.eltsa.lt/nw/en.html</a>
Nav warning	NO	Transmitted by NAVAREA I Baltic Sea Sub-area Coordinator Sweden.
Port warning	YES	can be found on <a href="https://hydro.eltsa.lt/nw/en.html">https://hydro.eltsa.lt/nw/en.html</a>

GMDSS implementation (IMO Publication 970 - GMDSS Handbook)

GMDSS	Y/N	Comments on GMDSS
Master Plan	YES	
Area A1	YES	MRCC Klaipeda
Area A2	YES	MRCC Klaipeda
Area A3	NO	
NAVTEX	YES	Transmitted by NAVAREA I Baltic Sea Sub-area Coordinator Sweden.
SafetyNet	NO	

## 7. Capacity Building

### Offer of or demand for Capacity Building

Nothing to report

### Training received, needed, offered

Nothing to report

### Status of national, bilateral, multilateral or regional development projects with hydrographic component

Nothing to report

## 8. Oceanographic activities

Carried out by Environmental Protection Agency (EPA): <https://aaa.lrv.lt/?lang=en>

## 9. Spatial data infrastructures

### Status of MSDI

Still evolving.

### Relationship with the NSDI

MSDI is part of the NSDI.

### Involvement in regional or global MSDI efforts

Nothing to report.

### National implementation of the Shared Data Principles – including any national data policy and impact on marine data

The Maritime Spatial Planning (MSP) in Lithuania is included into the national legislation regulating spatial planning – Law on Territorial Planning and its secondary legal acts. The Comprehensive Plan of the Territory of Lithuania is complemented by the marine spatial solutions adopted on 11 June 2015 by the Parliament of Lithuania and is a legally binding document obligatory for the state governmental institutions. Part of the marine space (up to 20 m isobaths) also falls under the regulation of the Law of the Coastal Strip. MSP applies to the entire marine area of Lithuania including territorial waters and the exclusive economic zone (EEZ). A complete SEA for the MSP was elaborated including national and transnational consultations with Lithuanian stakeholders as well as with Sweden and Latvia (summarized information source: VASAB MSP report).

### **MSDI national portal**

The National Center for Remote Sensing and Geoinformatics „GIS-Centras“ (SE „GIS-Centras“) is the State Enterprise, responsible for update and distribution of the national official geographic databases. SE „GIS-Centras“ is in charge of management and development of the Lithuanian Spatial Information Infrastructure portal ([www.geoportal.lt](http://www.geoportal.lt)), which is the place also for marine spatial data.

## **10. Innovation**

### **Use of new technologies**

Nothing to report.

### **Risk assessment**

Risk factors table elaborated.

### **Policy matters**

Nothing to report.

## **11. Other activities**

### **Participation in IHO meetings**

Participated remotely online as observers in 2<sup>nd</sup> Session of the IHO Assembly (2020).

### **Meteorological data collection**

Carried out by Lithuanian Hydrometeorological Service under the Ministry of Environment:  
<http://www.meteo.lt/en/>

### **Geospatial studies**

Nothing to report

### **Preparation for responses to disasters**

Coordinated by MRCC of Lithuanian Navy.

### **Environmental protection**

Carried out by Environmental Protection Agency (EPA - <https://aaa.lrv.lt/?lang=en>) and Environmental Protection Department under the Ministry of Environment (EPD - <https://aad.lrv.lt/>).

### **Engagement with the Maritime Administration**

Maritime Administration's functions are carried out by LTSA.

### **Aids to Navigation matters**

In port AtoNs managed by Port Authority. Marine AtoNs managed by LTSA.

### **Magnetic and gravity surveys**

Not performed by HD. May be performed by other institutions.

### **International engagements**

Signed bilateral arrangement with Hydrographic Office of the Polish Navy regarding cartographic products and information exchange.

**DETALŪS METADUOMENYS**

<b>Dokumento sudarytojas (-ai)</b>	Lietuvos transporto saugos administracija 188647255, Švitrigailos g. 42, LT-03209 Vilnius
<b>Dokumento pavadinimas (antraštė)</b>	HYDROGRAPHIC NATIONAL REPORT OF LITHUANIA
<b>Dokumento registracijos data ir numeris</b>	2021-07-30 Nr. 15B-6748
<b>Dokumento gavimo data ir dokumento gavimo registracijos numeris</b>	–
<b>Dokumento specifikacijos identifikavimo žymuo</b>	ADOC-V1.0
<b>Parašo paskirtis</b>	Vizavimas
<b>Parašą sukūrusio asmens vardas, pavardė ir pareigos</b>	Emilis Tertelis, Jūrų departamento Hidrografijos skyriaus vyriausiasis specialistas, Jūrų departamento Hidrografijos skyrius
<b>Sertifikatas išduotas</b>	EMILIS,TERTELIS LT
<b>Parašo sukūrimo data ir laikas</b>	2021-07-30 13:11:44 (GMT+03:00)
<b>Parašo formatas</b>	XAdES-EPES
<b>Laiko žymoje nurodytas laikas</b>	–
<b>Informacija apie sertifikavimo paslaugų teikėją</b>	EID-SK 2016, AS Sertifitseerimiskeskus EE
<b>Sertifikato galiojimo laikas</b>	2020-02-01 18:57:15 – 2025-01-30 23:59:59
<b>Parašo paskirtis</b>	Pasirašymas
<b>Parašą sukūrusio asmens vardas, pavardė ir pareigos</b>	Tomas Kolendo, pavaduoja Administracijos direktoriaus pavaduotojas Tomas Kolendo
<b>Sertifikatas išduotas</b>	TOMAS,KOLENDO LT
<b>Parašo sukūrimo data ir laikas</b>	2021-07-30 15:26:18 (GMT+03:00)
<b>Parašo formatas</b>	XAdES-T
<b>Laiko žymoje nurodytas laikas</b>	2021-07-30 15:26:32 (GMT+03:00)
<b>Informacija apie sertifikavimo paslaugų teikėją</b>	EID-SK 2016, AS Sertifitseerimiskeskus EE
<b>Sertifikato galiojimo laikas</b>	2019-06-04 08:28:02 – 2024-06-02 23:59:59
<b>Informacija apie būdus, naudotus metaduomenų vientisumui užtikrinti</b>	"Registravimas" paskirties metaduomenų vientisumas užtikrintas naudojant "RCSC IssuingCA, VI Registru centras - i.k. 124110246 LT" išduotą sertifikatą "Dokumentų valdymo sistema Avilys, Lietuvos transporto saugos administracija, į.k. 188647255 LT", sertifikatas galioja nuo 2018-12-27 14:03:29 iki 2021-12-26 14:03:29
<b>Pagrindinio dokumento priedų skaičius</b>	–
<b>Pagrindinio dokumento pridedamų dokumentų skaičius</b>	–
<b>Priedamo dokumento sudarytojas (-ai)</b>	–
<b>Priedamo dokumento pavadinimas (antraštė)</b>	–
<b>Priedamo dokumento registracijos data ir numeris</b>	–
<b>Programinės įrangos, kuria naudojantis sudarytas elektroninis dokumentas, pavadinimas</b>	Dokumentų valdymo sistema Avilys, versija 3.5.2
<b>Informacija apie elektroninio dokumento ir elektroninio (-ių) parašo (-ų) tikrinimą (tikrinimo data)</b>	Atitinka specifikacijos keliamus reikalavimus. Visi dokumente esantys elektroniniai parašai galioja (2021-07-30 15:32:15)
<b>Paieškos nuoroda</b>	–
<b>Papildomi metaduomenys</b>	Nuorašą suformavo 2021-07-30 15:32:15 Dokumentų valdymo sistema Avilys