

Baltic Sea International Charting Coordination Working Group (BSICCWG)

BSICCWG Report to the 26th BSHC Conference

1. Status of the work of BSICCWG since BSHC 25th Conference

Following the BSHC 25 meeting, the BSICCWG met in May 2021. The communication and tasks have been carried out also by circulars and e-mail.

Mr Jarmo Mäkinen has acted as the Chair of the BSICCWG. *Mr Jukka Helminen* has acted as a secretary in the BSICCWG.

The membership of the WG:

Kell Torp Jensen	Denmark
Peter Ladegaard Sørensen	Denmark
Maris Akkerman	Estonia
Gabriela Kotsulim	Estonia
Sylvia Spohn	Germany
Ilze Driksne	Latvia
Linda Purina	Latvia
Normunds Duksis	Latvia
Mindaugas Zakarauskas	Lithuania
Alla Bira	Lithuania
Jacek Kijakowski	Poland
Adam Klosinski	Poland
Elisabeth Farrington	Sweden
Stefan Cederberg	Sweden
Jukka Helminen	Finland (Secretary)
Jarmo Mäkinen	Finland (Chair)

2. BSHC 25 actions for BSICCWG

Only permanent actions since BSHC25. All in the constant operation.

2	---	---	To forward the first edition of new INT charts to chair of BSICCWG for evaluation.	All MS	Permanent
8.	---	---	Provide continuous updates to S-11 Part B for INT Region E through the INToGIS tool. Implement the procedure depicted in IHO CL 64/2015 for the review and monitoring of INT charts and define approved ENC Schemes.	All MS, BSICCWG Chair	Permanent

3. BSICCWG7 meeting 19-20 May 2021 (VTC)

The agenda of the BSICCWG7 meeting was divided into two parts; INT charts (first day) and ENC related items (second day). All the members (excl. Russia) were represented. Main topics of the meeting:

BSHC25 actions

Outcome of BSHC 25 and actions for BSICCWG were reviewed. Permanent actions are in process.

INT Chart Web Catalogue; Updating of S-11 Part B, Region E (Ed. 4.0.2, May 2021)

The INTOGIS II tools have been successfully launched since 2 January 2020. INT Chart web catalogue is in active use and there have not been critical problems to use it. Member states are providing continuous updates (excl. Russia). Lithuania is not able to use the tool since they have no access to the system. The BSICCWG Chair will inquire from the IHO, whether Lithuania could have a possibility to use INTOGIS tool. Lithuanian charts are following S-4 and some already exists in the Web Catalogue (as national charts).

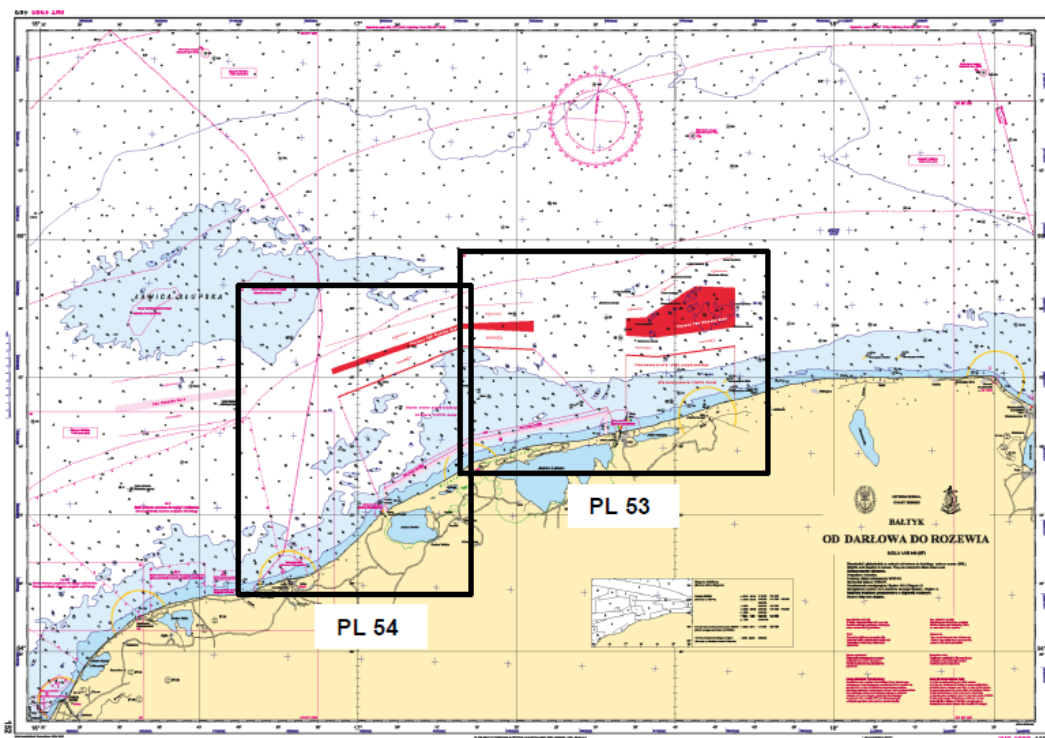
Some development proposal was identified:

- To include an automatic notification message when the chart is approved in the IHO Web Catalogue.
- To include national letters (e.g. Polish letters) for a PDF output from the IHO Web Catalogue.

[Link](#) to INT Chart Web Catalogue.

Baltic Sea INT-Scheme

Status of INT Charts/ need for new INT Numbers was reviewed. Two new INT numbers is needed for the Polish charts 53 (Approach to Leba, 1:50 000) and 54 (Approach to Utska, 1:50 000). New INT-numbers proposed to be [INT 12191](#) and [INT 12192](#).



New Polish INT charts

Adoption of the German charts INT1303 and INT1201 has been agreed after last BSICCWG by Denmark and Sweden. The timetable for adoption should be agreed in the bilateral negotiations between the countries.

Re-scheming and re-numbering of German INT charts is going on. It is almost completed in North Sea and continuing now in the Baltic sea area (reported detailed in BSHC24). Germany has produced 5 NCs and 13 NEs in Baltic Sea area after the last meeting.

Baltic Sea Sub Areas

One update during the meeting; coordinate point Mys Taran is located in Russia, not in Poland.

50 Mys Taran	54°57.61'N	19°58.73'E	Gulf of Gdansk, South Eastern Baltic	RU
--------------	------------	------------	--------------------------------------	----

Status of ENC Coverage in Baltic Sea- Baltic Sea ENC scheme

Denmark is creating new technical editions of all of their cells with Esri. At the moment no plans for new ENC cells. Plan to do re-scheming in the future. No grid based scheming used today.

Estonia has released some new editions of harbour and berthing cells. New approach editions are planned in a new compilation scale but the coverage will stay the same.

Finland has no significant plans concerning coverage. Current general ENCs will be gradually changed to coastal ENCs starting this year. New General cells will follow later in the future.

Germany is changing their approach and coastal ENCs scheme to grid system.

Latvia converted all coastal cells in to grid model. They are working on changing ENCs to a new vertical datum (BSCD 2000), starting with ports and harbours. Considering full approach coverage in the future but there are no specific plans yet.

Lithuania has started using new ESRI -production system. Working on approach cells at the moment.

In *Poland*, new approach and berthing cells are planned. One new approach cell produced in 2021 so far.

Sweden has not had any changes in coverage since the last meeting. Sweden has been updating maritime limits and CATZOC. One harbour cell coverage is has extended.

List of Ports

The US produced World Port Index (WPI) is a publication layer in the IHO ENC catalogue and INTOGIS. This has been manual work without exact coordinates. If there is ENC port coverage there should be a corresponding WPI. The US is in the process of modernizing and redoing the World Port Index and will have more accurate latitudes and longitudes for the location of the ports in the future. Possibly to have a number value for harbor size instead of existing category value (V,S,M,L).

There is an BSICCWG action, that Member States will review port information in their respective territories and provide updates to the BSICCWG Chair, who will collect and forward updates to the US.

Gaps and overlaps Baltic Sea

IC-ENC report of gaps and overlaps 2021 was reviewed. The overlap results seems to be different depending on the tool used and many of overlaps has seen technical. Overall severity of risk of remaining overlaps, has been classified low or accepted, not navigationally significant. Monitoring and analysis of the ENC coverage is permanent, continuous process in member states.

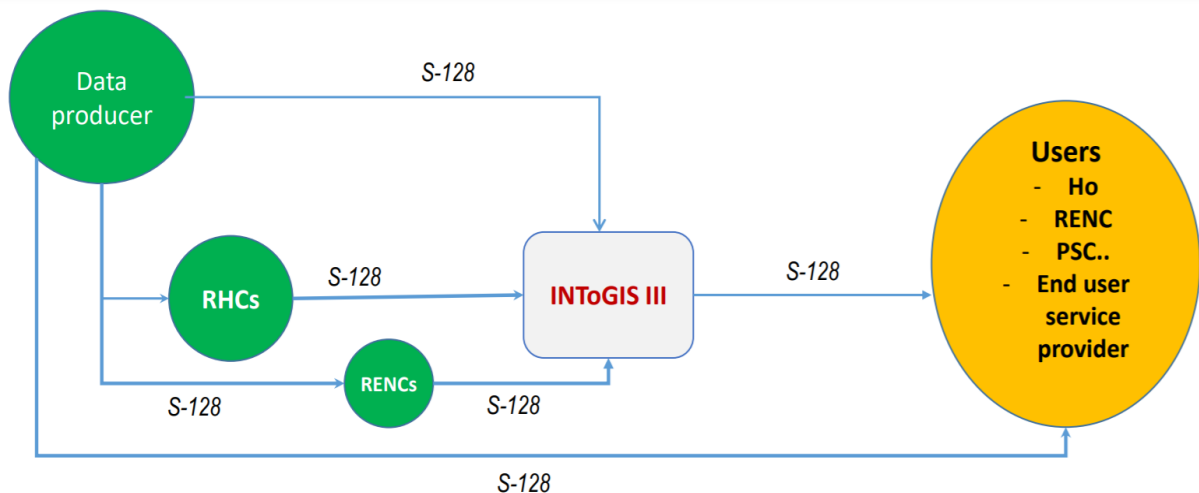
Gaps in the front of Kaliningrad and in the Saimaa Canal was identified. Responsibility of these ENCs belongs to Russia.

Baltic Sea ENC Harmonisation Recommendations

The document is no longer updated regularly.

Towards INTOGIS III

INToGIS III-project was presented. The development work will be made by KHOA. New version will be tool for managing and monitoring also the catalogues/scheme of the S-101 ENCs and probably some other S-1xx products. This was seen were promising and WG is looking forward for the possible new tasks from the BSHC.



Any other business

Draft of WEND-100 Principles and Roadmap for the S-100 implementation was reviewed. Brief discussion about schedules for S-101 production plans. The need for regional coordination of S-100 implementation will be on the agenda of the next BSHC26 meeting in September 2021.

Experiences of data base management and chart production systems was discussed. Most of the Baltic Sea member states (FI, DE, LV, PL, SE) are using Caris HPD. Some challenges have been identified when switching from HPD version to the new one. Denmark has changed the production system from Caris to Esri. Lithuania is also using Esri-products today.

Status of BSCD2000 chart products in member states was reviewed.

Experiences of publishing new charts in the Kattegat TSS area was presented (Denmark).

4. Future work of BSICCWG

- To monitor ENC coverage in the Baltic Sea and maintain and adopt ENC schemes in Baltic Sea (IHO CL64/2015)
- To analyze gaps and overlaps and report to BSHC and WENDWG.
- To update List of Ports (IHO catalogues).
- To provide continuous updates to S-11 Part B for INT Region E through the INTogIS II tool.
- To review and monitor new INT Charts (IHO CL 64/2015).
- To follow and coordinate all the planned new INT charts and the freezing numbers.
- Be prepared to adopt INTogIS III tool and monitoring S-100 products.

5. Next BSICCWG-meeting

The next BSICCWG meeting is planned to take place in Rostock 18th and 19th of May 2022.

6. Actions for the 26th BSHC Conference

- Note this report.
- Give further guidance to BSICCWG.