

# High density contours in the Finnish ENCs

by the Finnish Hydrographic Office

**27th Baltic Sea Hydrographic Conference  
21 - 22 September 2022**

## Enriched depth information in the Finnish ENC

A new Nautical Chart Production System (AHTI) with an automatic depth contouring and (semi-) automatic sounding selection tools are in operative use at the Finnish HO.

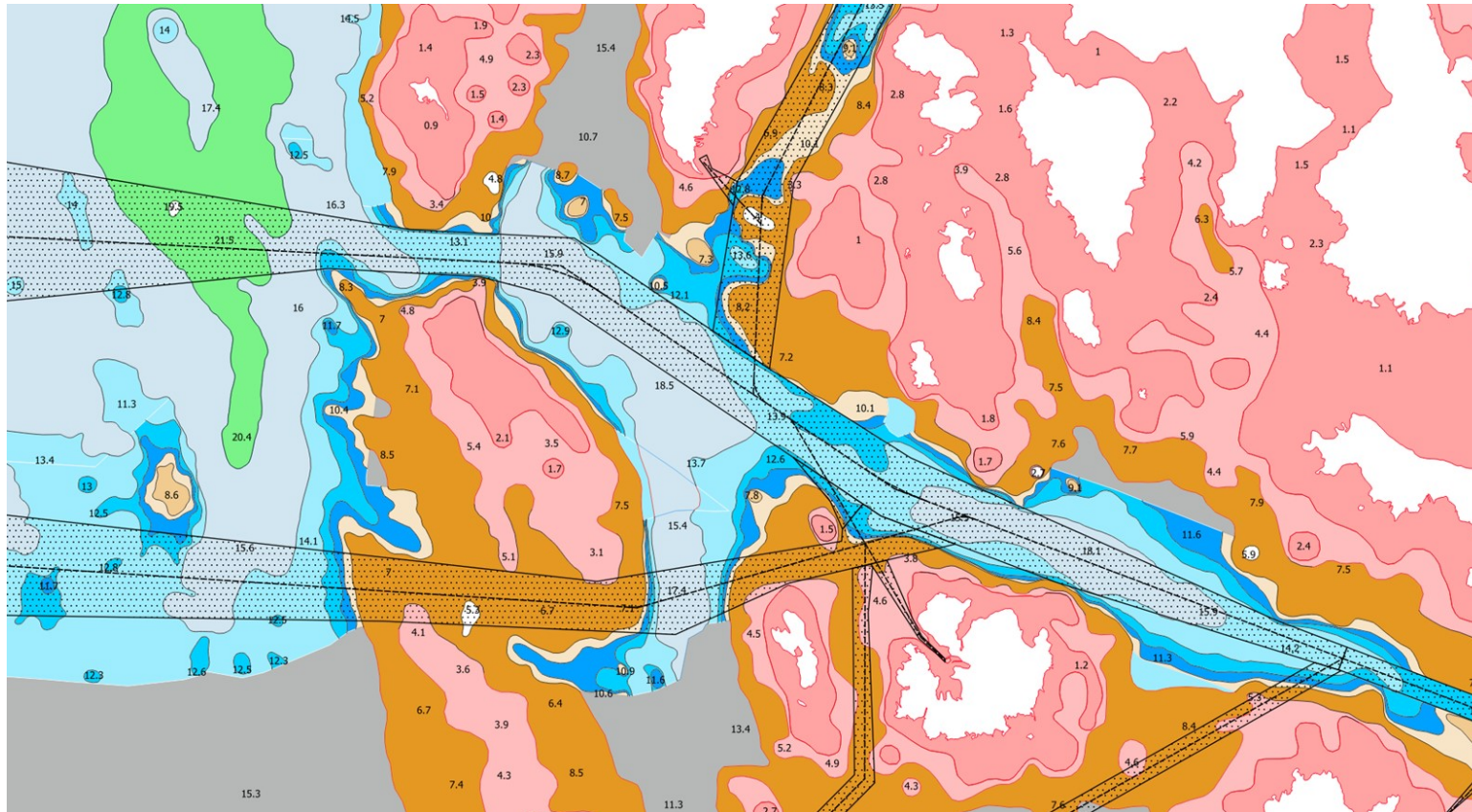
The Rolling coin –method is used for depth contour processing.

A high density contours will be applied for the major merchant fairways and ports in large scale ENC's i.e Berth, Harbour and Approach products.

As a common rule: A one meter interval DEPCONS and DEPAREs for range between 6 meter depth and depth > one meter over the safe clearance depth of the fairway in question.

The first set of ENC's including additional contour intervals and respective depth areas was published in January 2022 from the northern part of the Bay of Bothnia.

# High density depth contours and depth areas



Traditional contour (depth area) intervals on Finnish ENC's and Printed Charts

- ahti:U3\_DEPARE\_A\_0m-3m
- ahti:U3\_DEPARE\_A\_3m-6m
- ahti:U3\_DEPARE\_A\_6m-10m
- ahti:U3\_DEPARE\_A\_10m-15m
- ahti:U3\_DEPARE\_A\_15m-20m
- ahti:U3\_DEPARE\_A\_20m-30m
- ahti:U3\_DEPARE\_A\_30m-50m
- ahti:U3\_DEPARE\_A\_50m-100m
- Etc ...

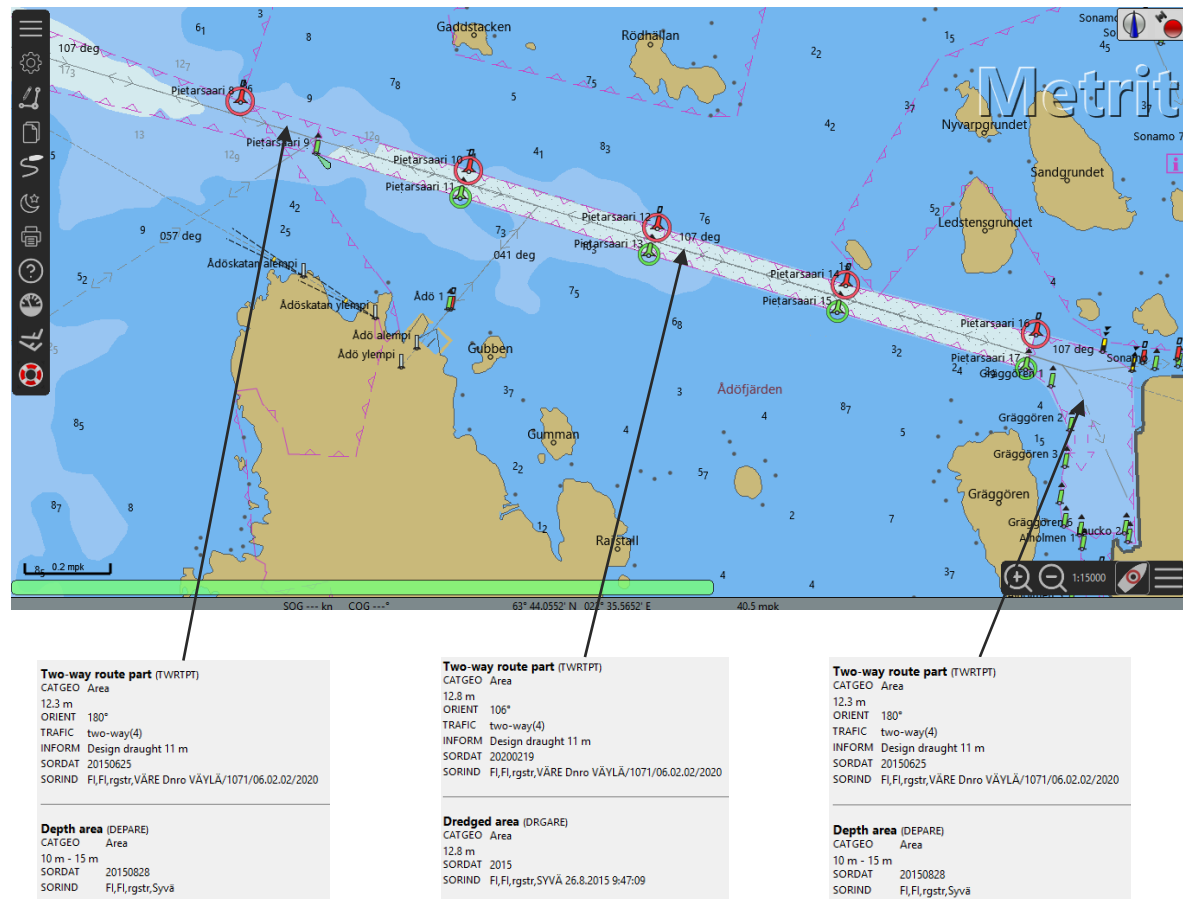


Additional contour (depth area) intervals on Finnish ENC's

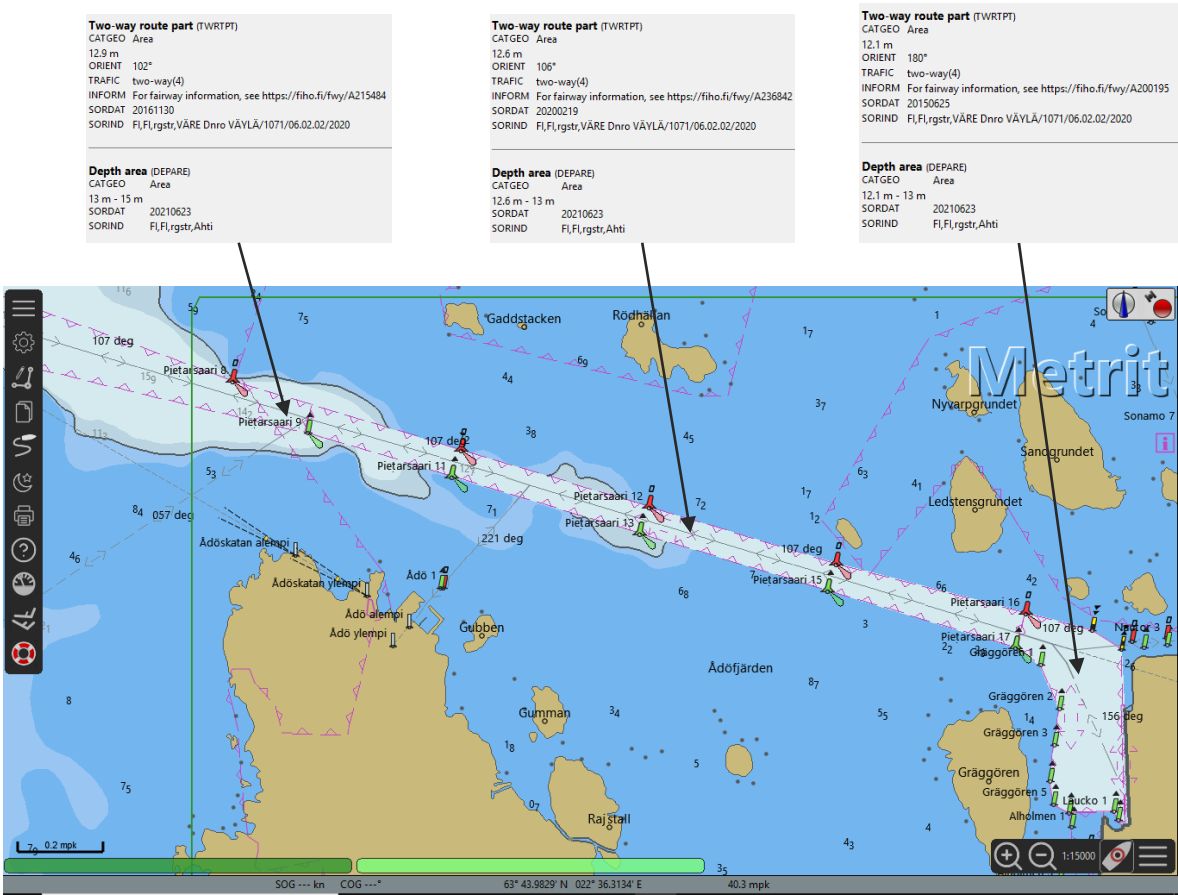
- ahti:U3\_DEPARE\_A\_0m-3m
- ahti:U3\_DEPARE\_A\_3m-6m
- ahti:U3\_DEPARE\_A\_6m-10m
- ahti:U3\_DEPARE\_A\_8m-9m
- ahti:U3\_DEPARE\_A\_9m-10m
- ahti:U3\_DEPARE\_A\_10m-11m
- ahti:U3\_DEPARE\_A\_11m-12m
- ahti:U3\_DEPARE\_A\_12m-13m
- ahti:U3\_DEPARE\_A\_13m-15m
- ahti:U3\_DEPARE\_A\_10m-15m
- ahti:U3\_DEPARE\_A\_15m-20m
- ahti:U3\_DEPARE\_A\_20m-30m
- ahti:U3\_DEPARE\_A\_30m-50m
- Etc ...

# High density contours from navigators perspective, case Port of Pietarsaari (Jakobstad)

FI4EIYAJ cell before 30 March 2022



FI4EIYAJ cell after 30 March 2022



**Thank You**