

Baltic Sea International Charting Coordination Working Group (BSICCWG)

BSICCWG Report to the 27th BSHC Conference

1. Status of the work of BSICCWG since BSHC 26th Conference

A face to face meeting was planned to be held in May 2022 (Rostock, Germany), but it was canceled due to the suspension of work decided by the BSHC after the Russian invasion of Ukraine.

The communication and tasks have been carried out by circulars and e-mail.

BSICC has organised a MAGVAR -survey in summer 2022 (at the initiative and assistance of the Estonian Transport Administration). Summary of that questionnaire will be presented at the next BSICCWG -meeting.

BSICCWG has planned to have a short VTC- meeting at 13 September 2022.

Mr Jarmo Mäkinen has acted as the Chair of the BSICCWG. *Mr Jukka Helminen* has acted as a secretary in the BSICCWG.

The membership of the WG:

Denmark	Mr Allan Idd Jensen Mr Thomas Christensen
Estonia	Ms Gabriela Kotsulim Ms Maris Akkerman
Finland	Mr Jarmo Mäkinen (Chairman) Mr Jukka Helminen
Germany	Ms Sylvia Spohn
Latvia	Ms Linda Purina Ms Ilze Driksne Mr Norman Duksis
Lithuania	Ms Alla Bira
Poland	Mr Jacek Kijakowski Mr Adam Klosinski
Russia	Capt Sergey Egorov
Sweden	Ms Elisabeth Farrington Mr Stefan Cederberg

2. BSHC26 actions for BSICCWG

The list of permanent actions was updated at the BSHC26 Conference. Action is in the constant operation.

5	—	—	<p><u>Provide</u> continuous updates to S-11 Part B for INT Region E through the INTtoGIS tool.</p> <p><u>Implement</u> the procedure depicted in IHO CL 64/2015 for the review and monitoring of INT charts and <u>define</u> approved ENC Schemes.</p>	BSICCWG Chair, BSICCWG representatives	Continuously	Permanent
---	---	---	--	--	--------------	-----------

New actions:

18	BSHC26 / D.2	12	BSICCWG tasked to <u>coordinate</u> the work with an S-101 scheme for the Baltic Sea.	BSICCWG	Continuously	New
----	--------------	----	---	---------	--------------	-----

The product scheme of the future ENC-S-101 has been discussed in the WENDWG sub-working group (Sub group for S-101 scheming guidelines). The working group includes a representative of the BSICCWG (J. Helminen).

Consensus was not reached in the WENDWG and work will continue with analysis in the regional level and after that in WENDWG next year (WENDWG12 action 4.2) [Link](#)

21	BSHC26 / D.3	15	BSICCWG tasked to <u>work</u> specifically with S-101 and S-102 coordination.	BSICCWG	Continuously	New
----	--------------	----	---	---------	--------------	-----

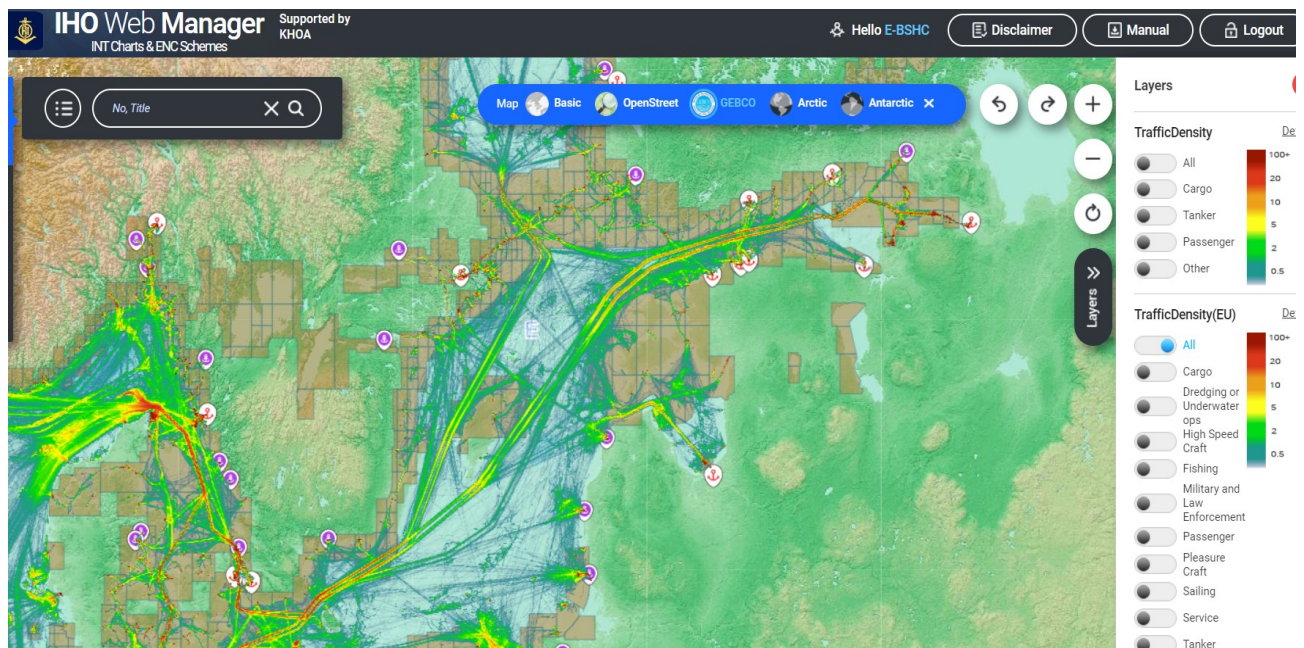
Work was due to start at a planned working group meeting in May, but the meeting had to be cancelled. Continuing at future meetings.

The working group also expects detailed guidance from the cancelled BSHC Strategic Correspondence Group (March 2022) for further S-100 work.

3. BSICCWG permanent work

INT Chart Web Catalogue; Updating of S-11 Part B, Region E (Ed. 4.0.44, July 2022)
Member states are providing continuous updates (excl. Russia). BSICCWG excitedly expecting IntToGIS New Version III.

[Link](#) to INT Chart Web Catalogue.

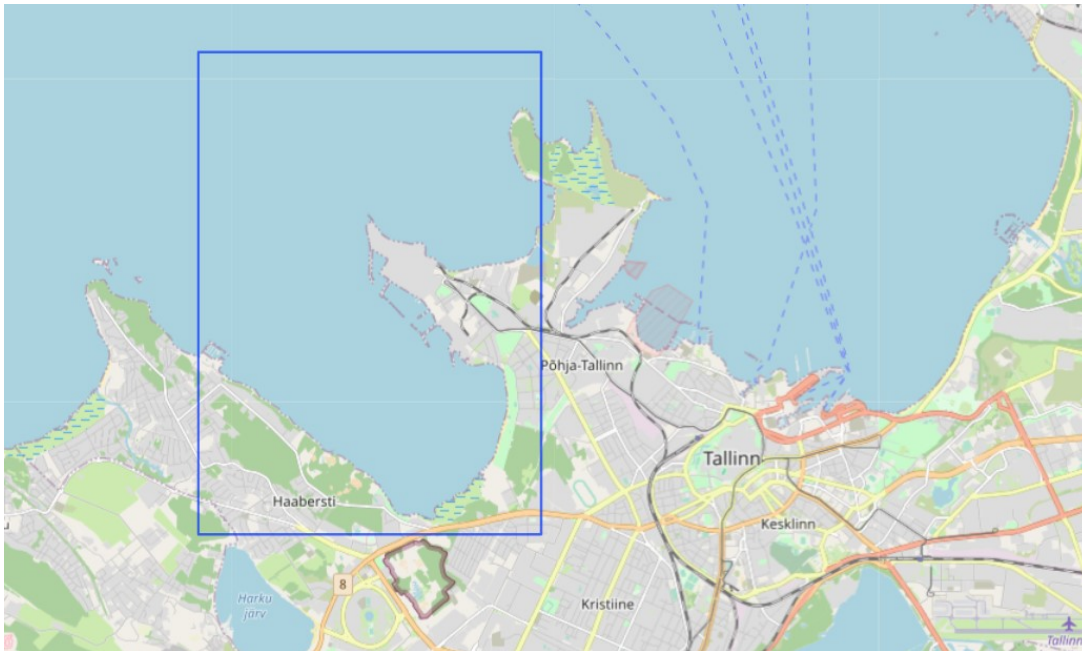


Baltic Sea INT-Scheme

Germany is continuing re-scheming and re-numbering of German INT charts in the Baltic Sea and has started a coproduction with UKHO in the Baltic Sea area too. New products and product-numbers have been allocated.

Estonia

New INT chart INT1794 (EE 823) Vene-Baldi sadam- Piirivalve sadam-Bekkeri Sadam-Meeruse Sadam (1:7500). Published 04/2022.



INT 1796 (EE 856, 1:10 000) Väinameri, Soru Sadam was cancelled 03/2022. INT number was frozen for five years.

Baltic Sea ENC scheme (status 2021)

Denmark is creating new technical editions of all of their cells with Esri. Plan to do re-scheming in the future. No grid based scheming used today.

Estonia has released some new editions of harbour and berthing cells. New approach editions are planned in a new compilation scale but the coverage will stay the same.

Finland has no significant plans concerning coverage. Current general ENC's will be gradually changed to coastal ENC's started 2021 from the Bothnian Bay. New General cells will follow later in the future.

Germany is changing their approach and coastal ENC's scheme to grid system.

Latvia converted all coastal cells into grid model. They are working on changing ENC's to a new vertical datum (BSCD 2000), starting with ports and harbours. Considering full approach coverage in the future but there are no specific plans yet.

Lithuania has started using new ESRI -production system. Working on approach cells at the moment.

In *Poland*, new approach and berthing cells are planned. One new approach cell produced in 2021 so far.

Sweden has updated maritime limits and CATZOC. One harbour -cell coverage has extended.

List of Ports

The US produced World Port Index (WPI) is a publication layer in the IHO ENC catalogue and INTOGIS II. NGA has modernized the World Port Index (WPI) and updated the World Port Index database and maintenance procedure.

Link: [Link to NGA World Port Index](#)

Gaps and overlaps Baltic Sea

Monitoring and analysis of the ENC coverage is permanent, continuous process in member states. Both IC-ENC overlap report and Primar overlap checker are in use. The overlap results seems still to be different depending on the tool used and many of reported overlaps are technical. Overall severity of risk of remaining overlaps, has been classified low or accepted, not navigationally significant.

Gaps in the front of Kaliningrad and in the Saimaa Canal are still valid. Responsibility of these ENCs belongs to Russia.

Baltic Sea ENC Harmonisation Recommendations

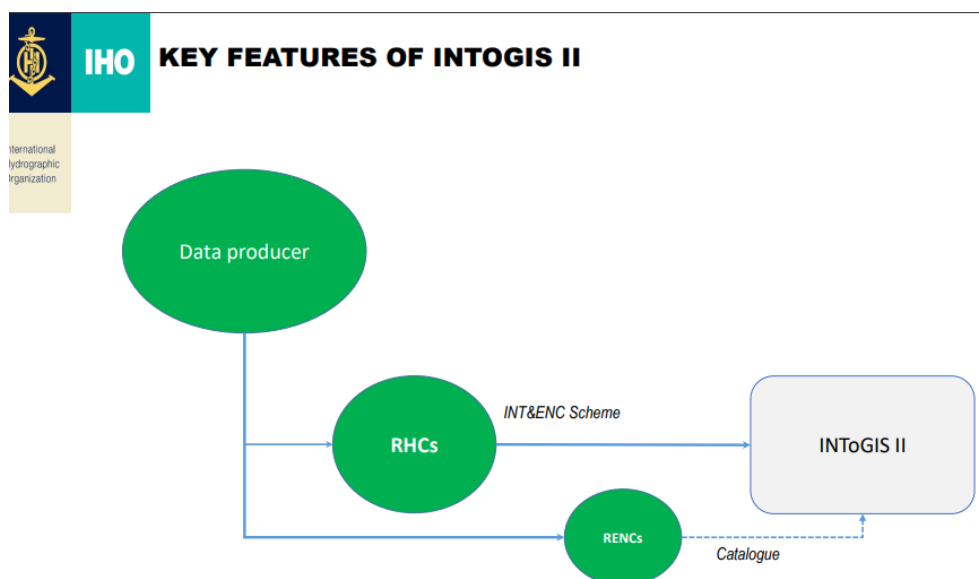
The document is no longer updated regularly.

ECDIS anomalies

Refers to IHO CL 40 2021 and with S-57 ENC encoding bulletin no 64. (ECDIS anomalies). The actions recommended in the Encoding Bulletin have been taken, with regard to the necessary items.

4. Towards INTOGIS III

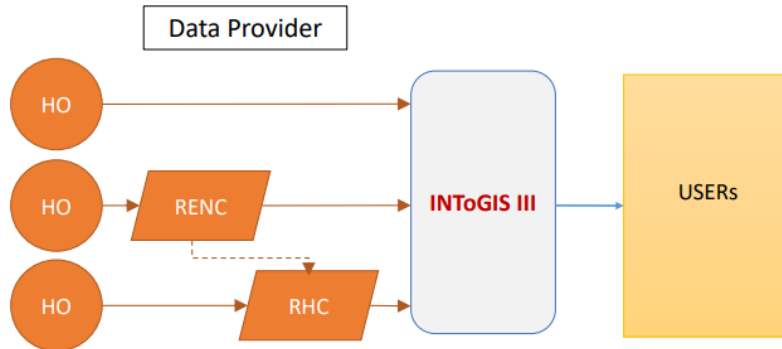
New version will be tool for managing and monitoring also the catalogues/scheme of the S-101 ENCs and other S-1xx products. Route monitoring products first (S-101, S-102, S-104, S-111, S-124, S-129). Connection to S-128 product Catalogue.



Purpose of INTOGIS II : Current status of development and production of INT charts and ENCs

IHO INTOGIS III STRUCTURE

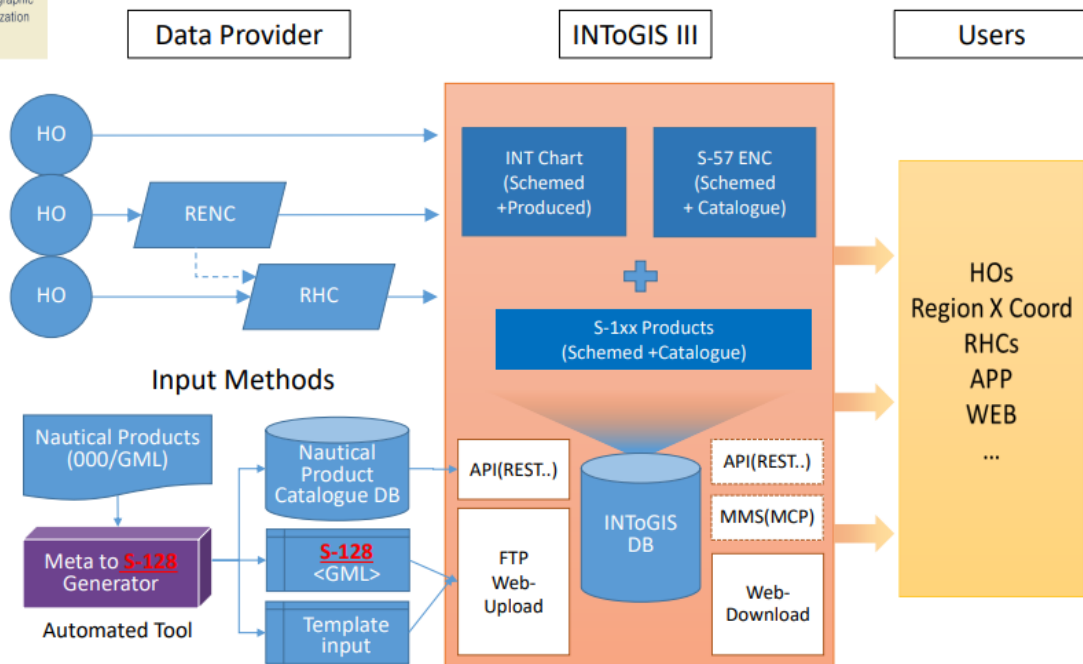
International Hydrographic Organization



Purpose of INTOGIS III : INTOGIS II + Current status of development and production of S-1xx

IHO INTOGIS III

International Hydrographic Organization



INToGIS III Timeline

Products in Database					Display setup	Output setup	Input setup	Overall Test		WEND-13 Feedback		Finalize		Launching
APR	MAY	JUN	JUL	AUG	SEP	OCT	NOV	DEC	JAN	FEB	MAR	APR	MAY	
2022									2023					

5. Future work of BSICCWG

- To monitor ENC coverage in the Baltic Sea and maintain and adopt ENC schemes in Baltic Sea (IHO CL64/2015)
- To provide continuous updates to S-11 Part B for INT Region E through the INTOGIS II (III) tool.
- To review and monitor new INT Charts (IHO CL 64/2015).
- To analyze gaps and overlaps and report to BSHC and WENDWG.
- To provide updates to World Port Index.
- To be prepared to adopt INTOGIS III tool and monitoring S-100 products.
- To review S-101 ENC Scheming Guidelines (WENDWG action) in the Baltic, noting the outcome of the discussion on a possible long-term strategy for a Global Common Grid Scheme.
- To coordinate S-101 scheme in the Baltic Sea in the future.
- To work and coordinate S-102 and other S-100 -products in the Baltic Sea.
- Coordinate and promote coverage of S-102 scheme and possibly other S-100 products in the Baltic Sea?

6. Next BSICCWG-meeting

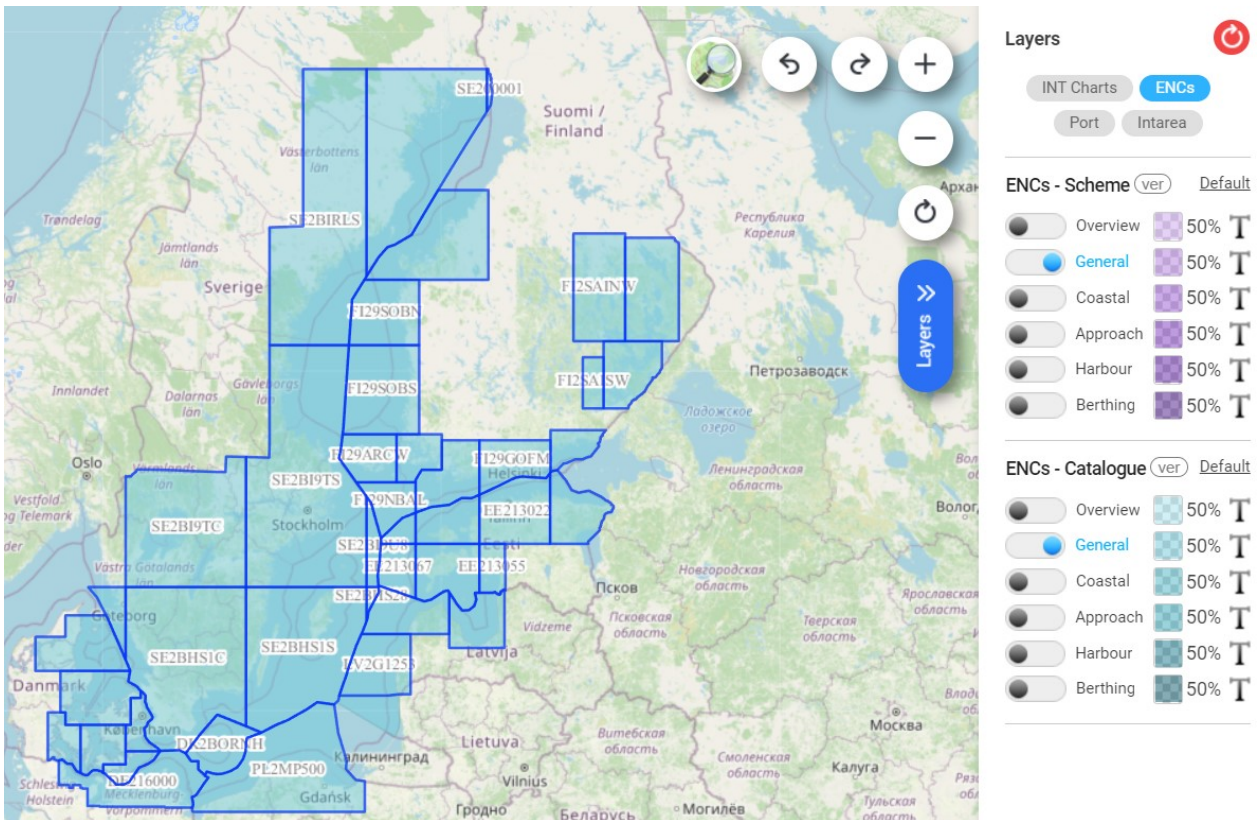
A short video conference scheduled for September 13, 2022.

The next BSICCWG (face-to-face) meeting is planned to take place in Rostock. Meeting date will be refined later.

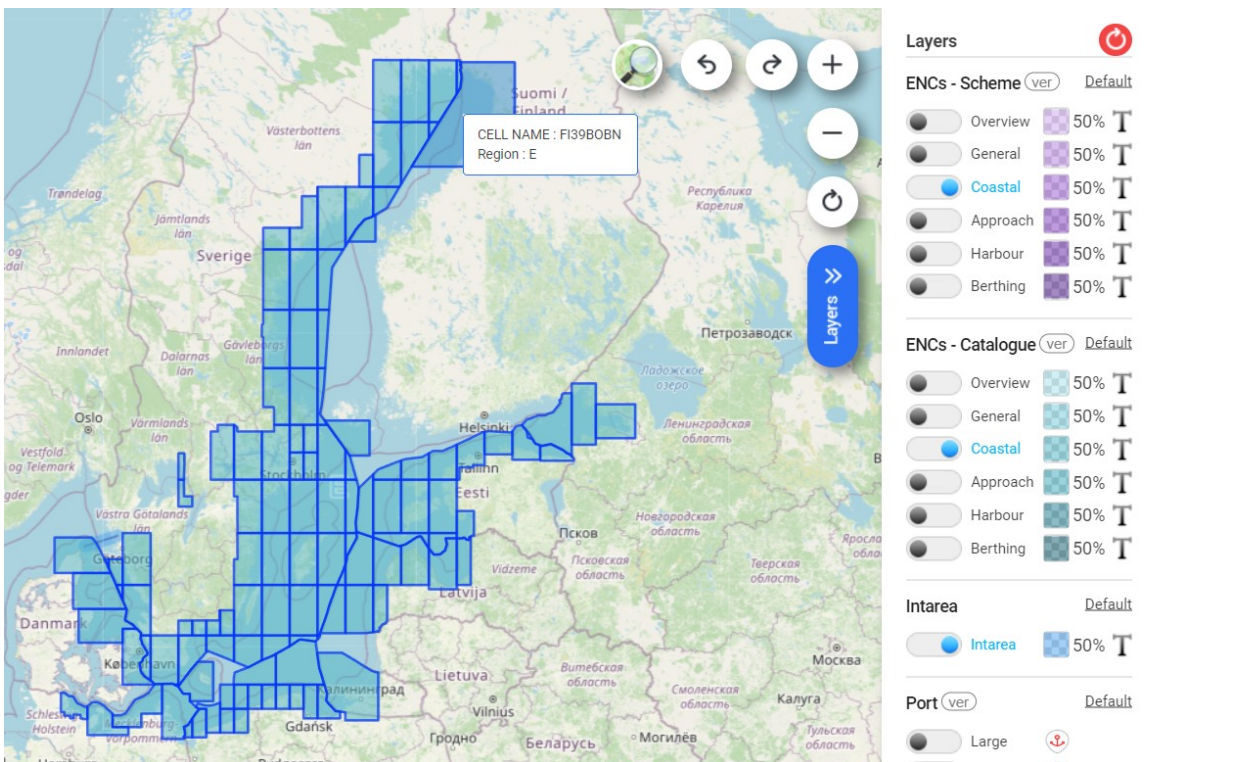
7. Actions for the 27th BSHC Conference

- Note this report.
- Give further guidance to BSICCWG.

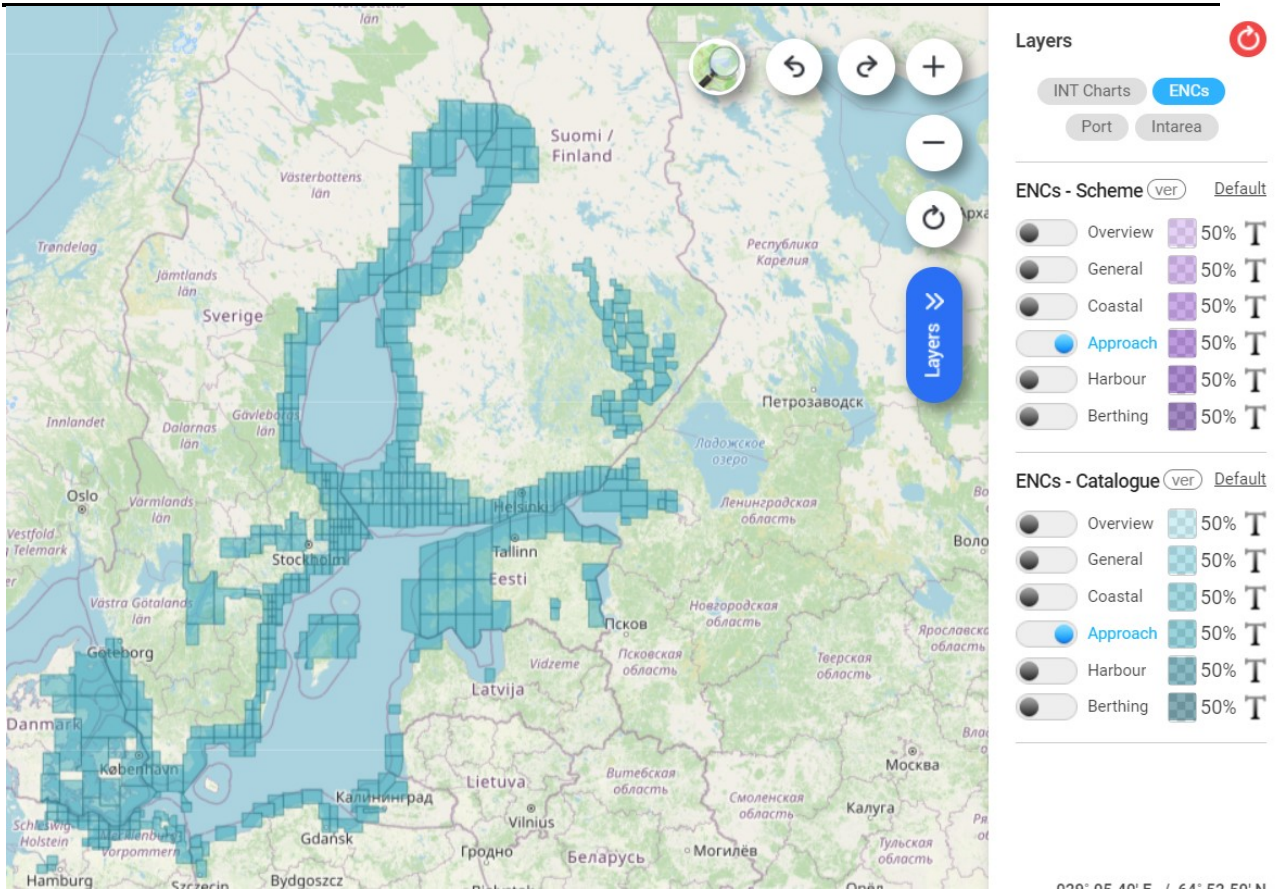
Annexes S-57 ENC scheme in the Baltic Sea:



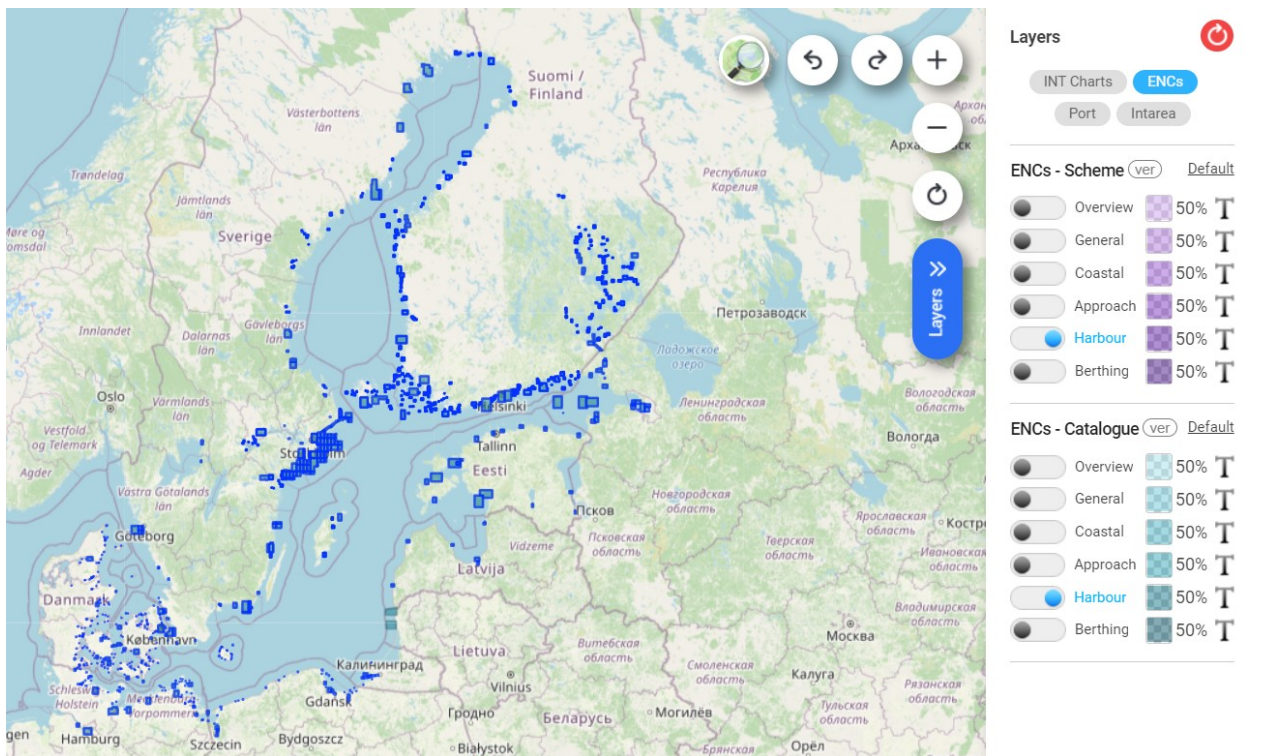
General ENCs (42 cells)



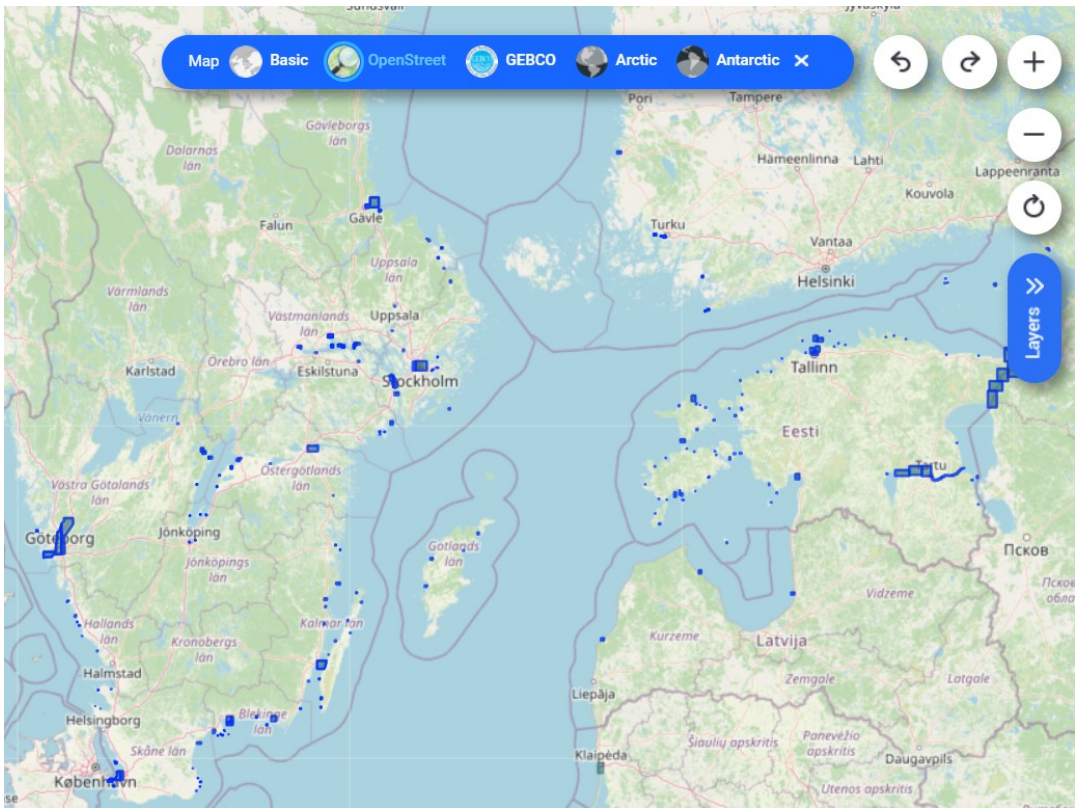
Coastal ENCs (120 cells)




Approach ENC (450 cells)



Harbour ENC (605 cells)




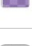




Layers 







INT Charts ENC

Port Intarea

ENCs - Scheme ver Default

- Overview  50% T
- General  50% T
- Coastal  50% T
- Approach  50% T
- Harbour  50% T
- Berthing  50% T

ENCs - Catalogue ver Default

- Overview  50% T
- General  50% T
- Coastal  50% T
- Approach  50% T
- Harbour  50% T
- Berthing  50% T

Berth ENCs (218 cells)