

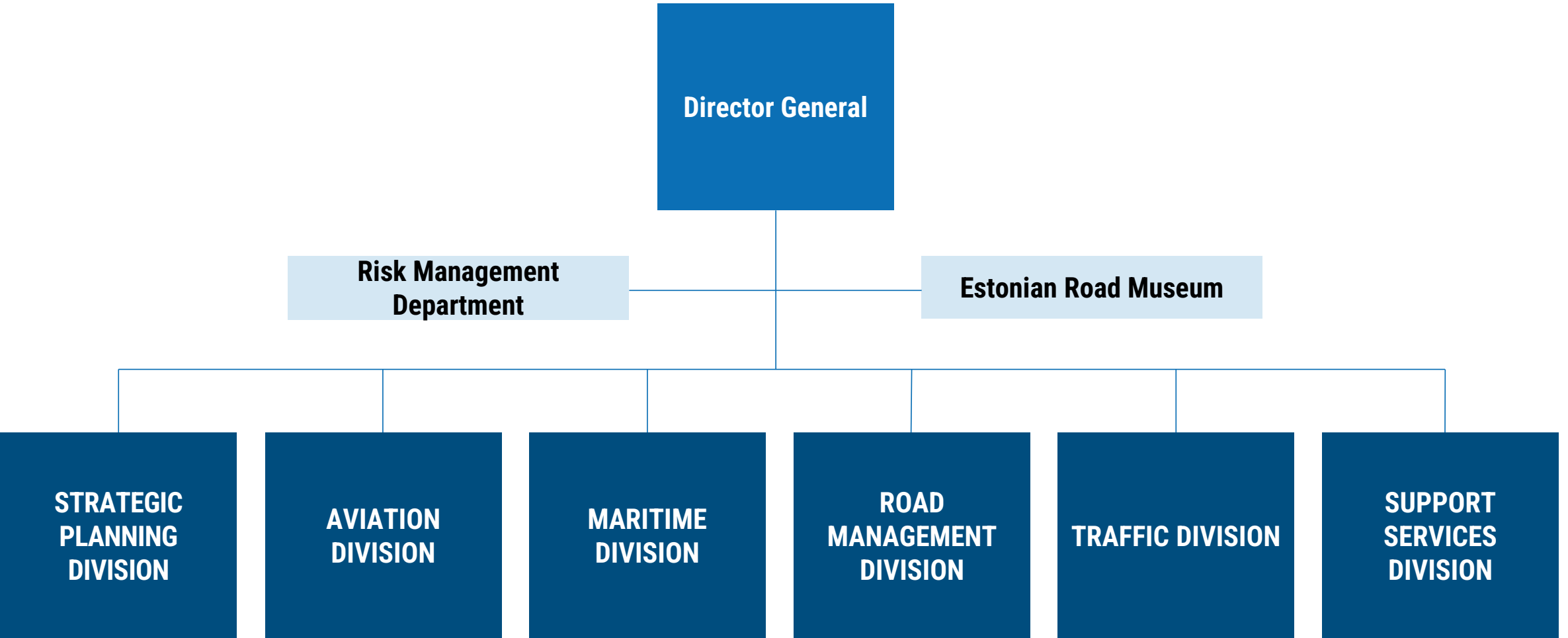


REPUBLIC OF ESTONIA
TRANSPORT ADMINISTRATION

Estonian Transport Administration for BSHC28

Olavi Heinlo
Head of Cartography Department / National Hydrographer
September 2023





723 employees

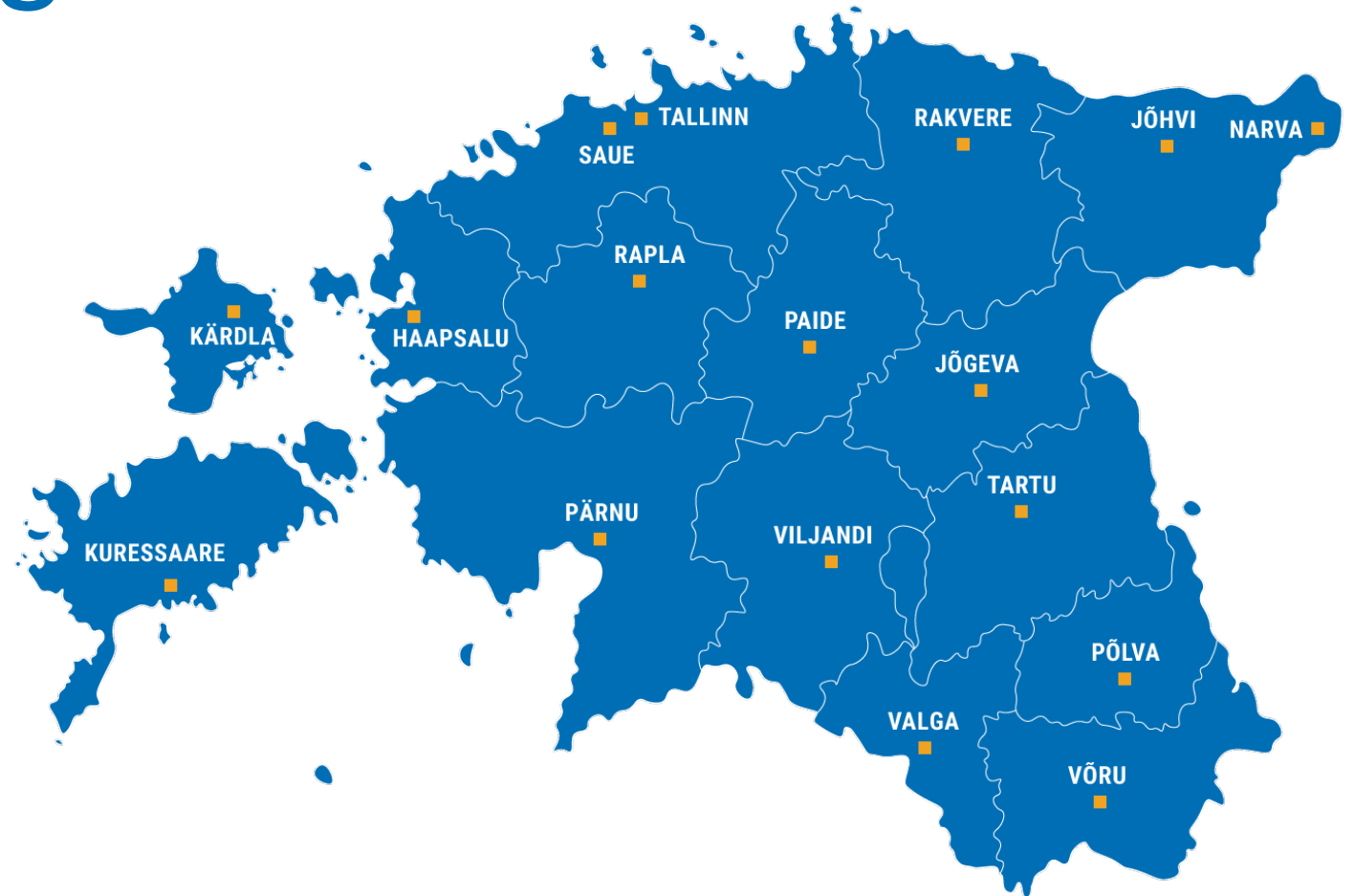
17 bureaus across Estonia



42,7%



57,3%



MARITIME DIVISION

Cartography Department

Hydrography Department

**Vessel Traffic
Management Department**

Shipping Department

Ships Unit

Small Craft Unit

Waterways and Ports Department

Waterways Unit

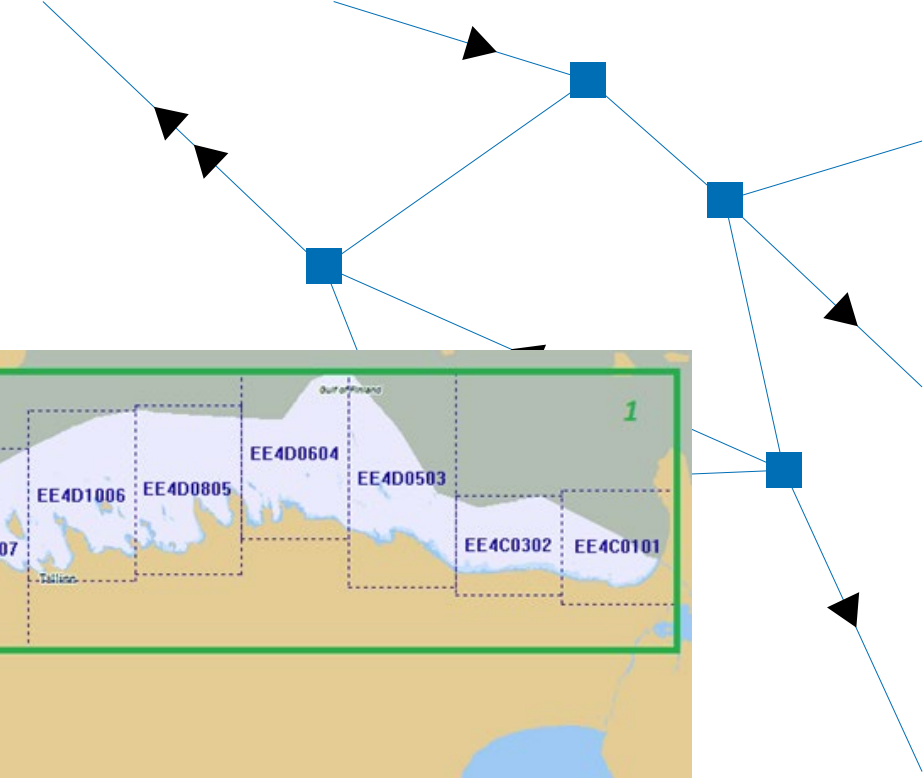
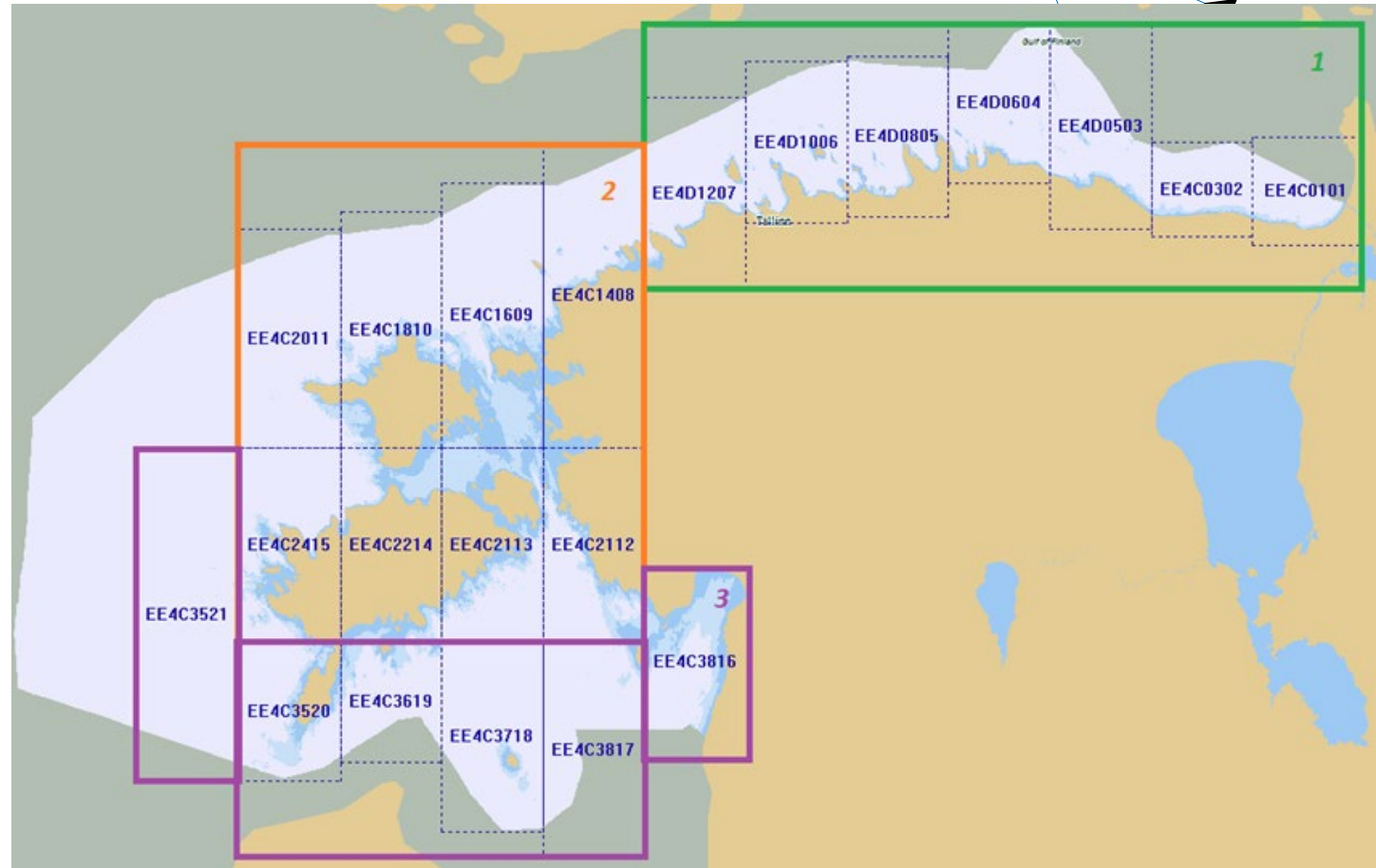
Ports Unit

Seafarers' Certification Department

**Maritime Development and
Competitiveness Department**

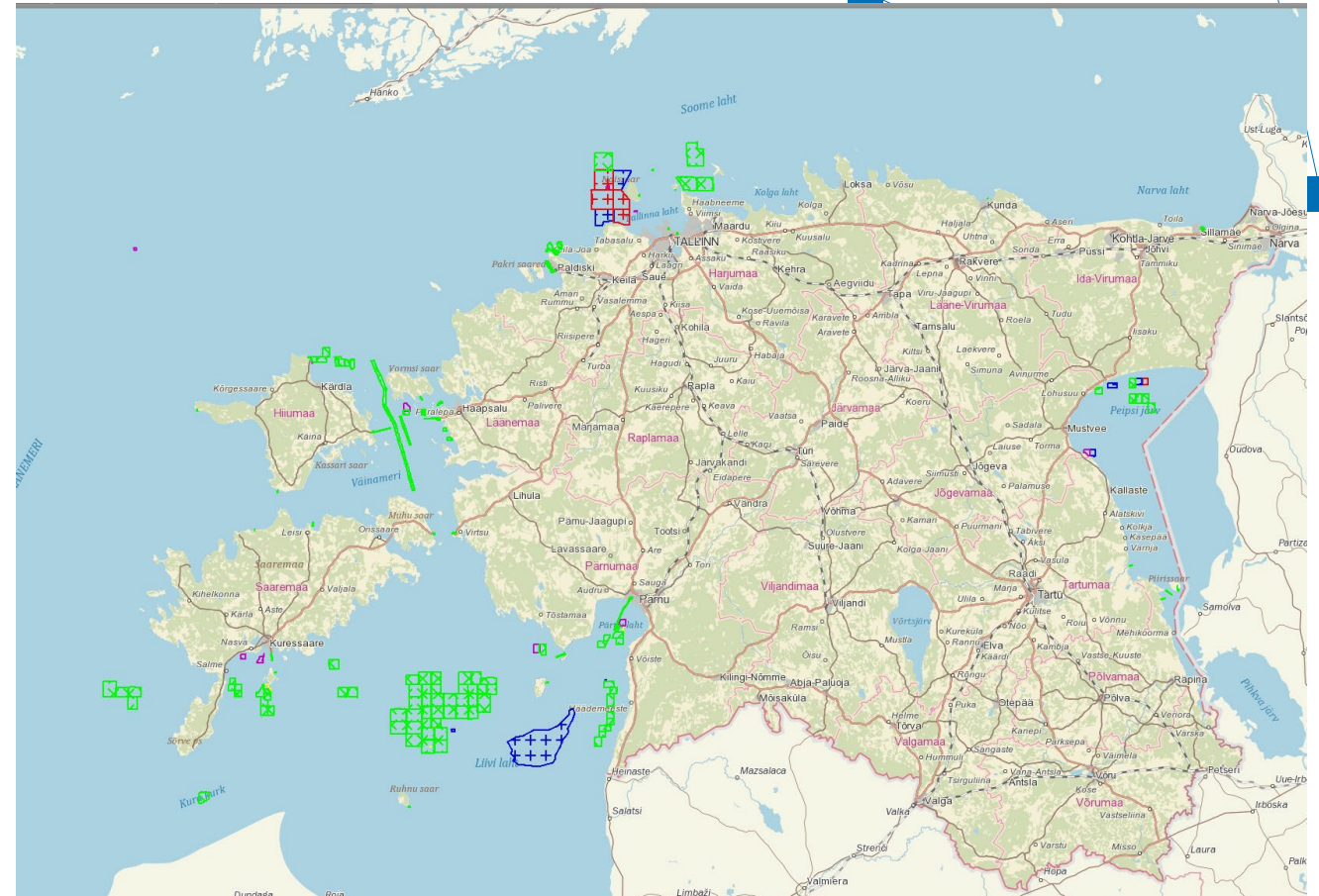
Cartography

- Ongoing transition from BHS-77 to BSCD2000
- Ongoing transition of approach ENC-s from 1:45000 to 1:22000
- S-101 conversion and testing



Hydrography

- In 2022 hydrographic survey in Estonian waters was carried out as follows:
- 1) 1100 km² – on HELCOM routes in the Gulf of Finland, Gulf of Riga and the Northern Baltic (CAT II and III).
- 2) 56 km² – Lake Peipsi;
- 3) 3 km² – Harbor areas (surveyed by private companies)

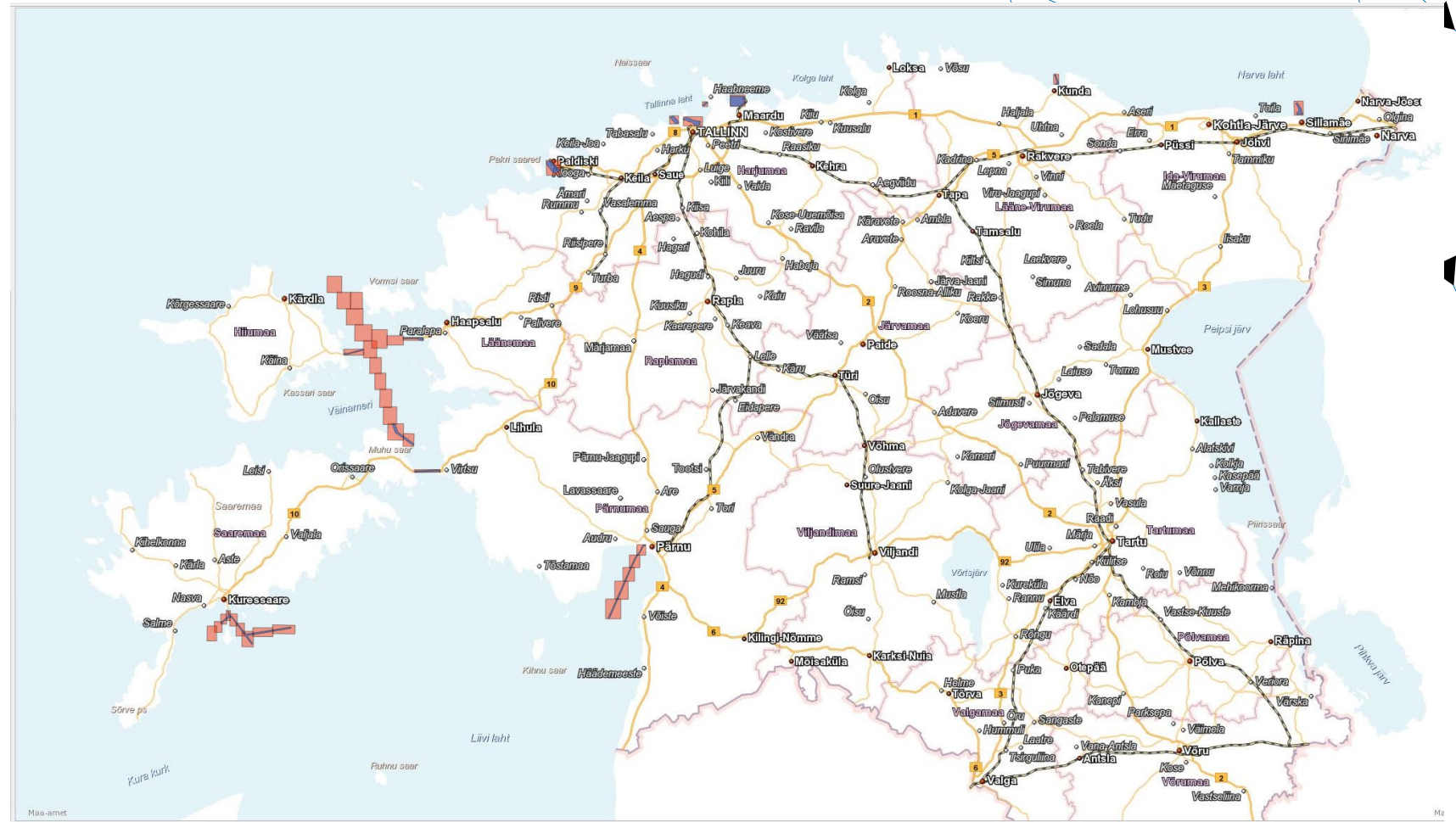


S-102

Hydrographic Information System (HIS) is now capable of producing S-102 version 2.2 datasets.

Sample data delivered to PRIMAR for testing and the tests were successful.

Defining areas for S-102 datasets and their resolution is in progress.





REPUBLIC OF ESTONIA
TRANSPORT ADMINISTRATION



Connecting Estonia in a safe,
smart and environmentally sustainable way.