

- ▶ Highlights of National report of Lithuania to 28th BSHC Conference

19-21 September 2023

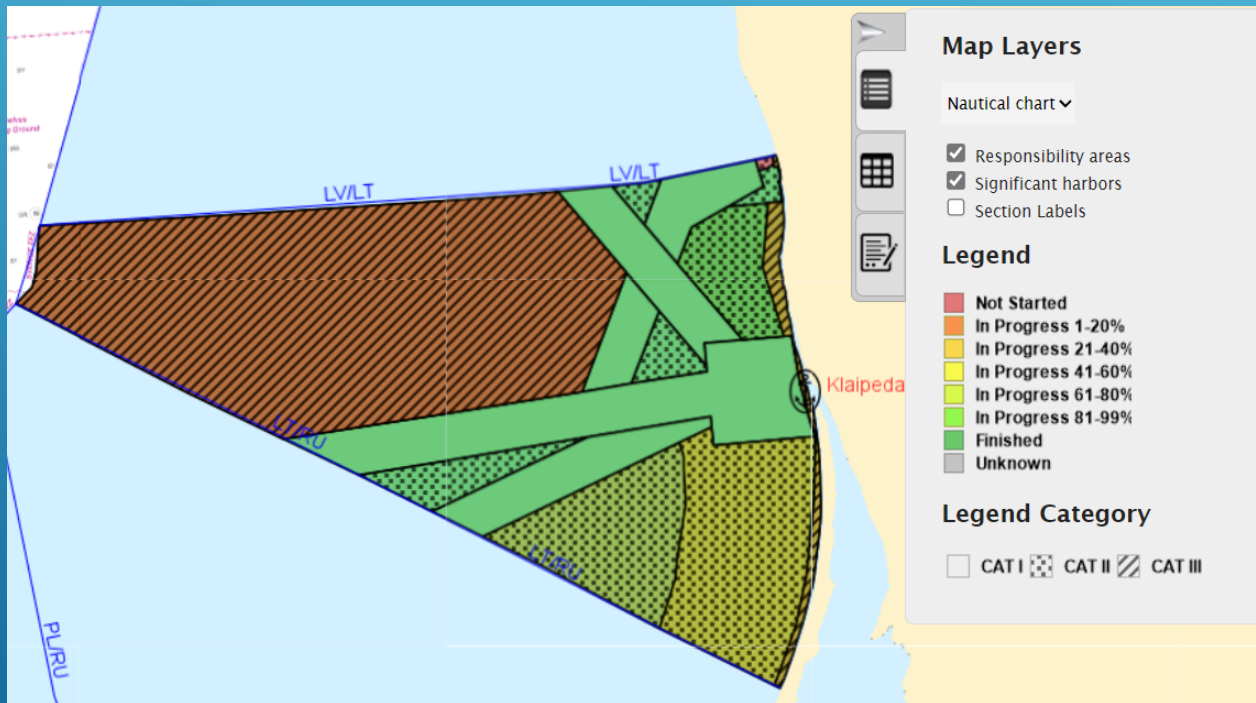


1. HYDROGRAPHIC OFFICE

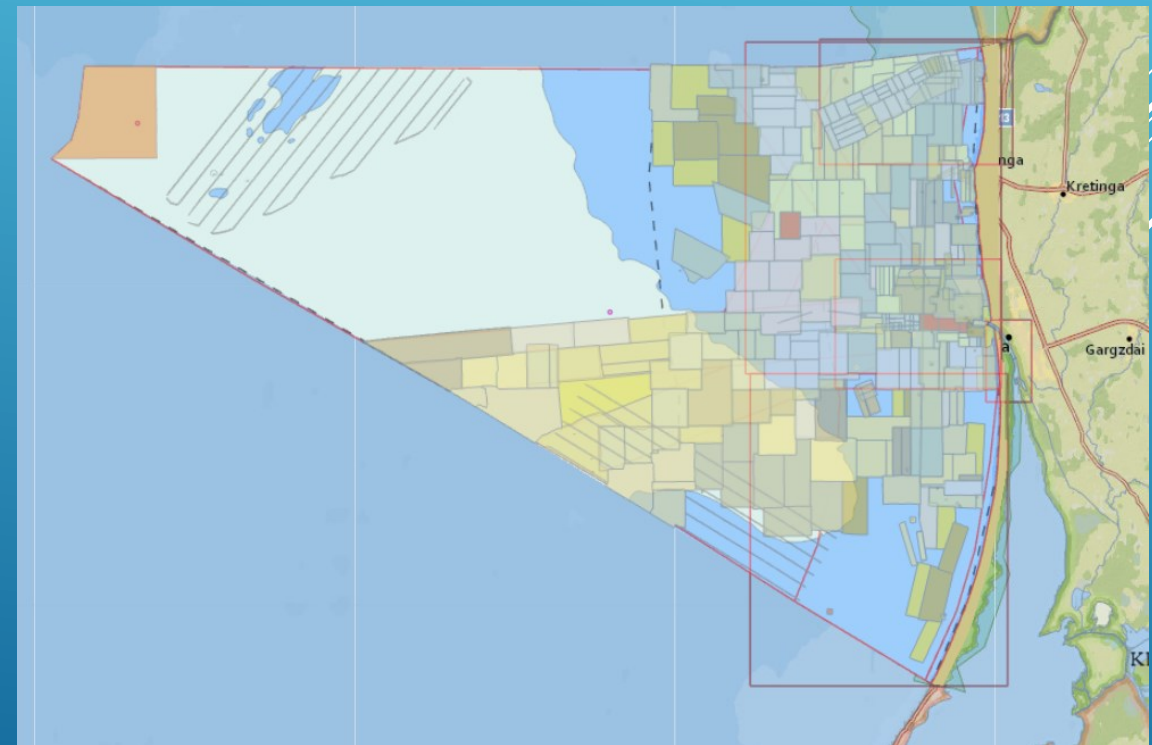
Changes from last BSHC:

- ▶ We have got new Director of Maritime Department
Mrs. Vilma Ketleriene

2. SURVEYS



- ▶ Finished areas of CAT 1; Updated information on <https://helcomresurvey.sjofartsvverket.se/>
- ▶ Continue surveys in areas of CAT 2 & 3.

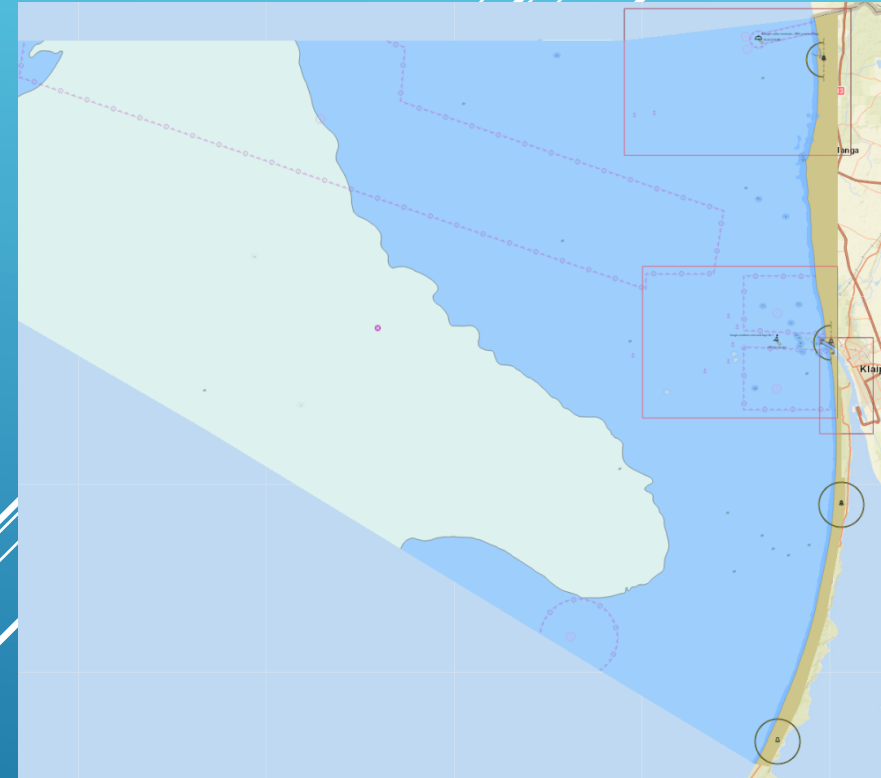


3. NEW CHARTS & UPDATES:

Currently 6 ENC are in distribution , 2 of scale band 3 are in preparation.

We produce only PDF files as paper charts and distribute them on request free of charge. The request form available on our web page.

We will participate at E-NAV project to get experience and requirements for the charting system adoption to produce S-100 products.



4. HYDROGRAPHIC DATA PORTAL: <https://hydro.eltsa.lt>

- ▶ Information regarding charting products;
- ▶ Nautical publications;
- ▶ Survey areas;
- ▶ Navigational warnings;
- ▶ AtoNs (will be updated at 2023 Q4);
- ▶ Inland waterways information.

The screenshot displays the 'Navigaciniai įspėjimai' (Navigational Warnings) section of the portal. The left sidebar lists various charting products with their identifiers and titles in Lithuanian. The main area shows a map of the Baltic Sea region with several red and yellow markers indicating specific locations or warnings. The map includes labels for 'Lietuva' (Lithuania) and 'Lietuvos pakrantė' (Lithuanian coast).

Identifikatorius	Aprašymas
087 (T) 2023-09-15	PIETRYTINĖ BALTIJOS JŪROS DALIS LIEUVOS PAKRANTĖ – KARINĖS PRATYBOS
086 (T) 2023-09-15	PIETRYTINĖ BALTIJOS JŪROS DALIS LIEUVOS PAKRANTĖ – KARINĖS PRATYBOS
085 2023-09-11	PIETRYTINĖ BALTIJOS JŪROS DALIS LIEUVOS TERITORINĖ JŪRA – DREIFUOJANTI BUJA
075 (T) 2023-08-21	PIETRYTINĖ BALTIJOS JŪROS DALIS KLAIPĖDOS JŪRŲ UOSTAS – KRANTINĖS NR. 88-98 – GILNIMO DARBAI
034 (T) 2023-03-18	PIETRYTINĖ BALTIJOS JŪROS DALIS KLAIPĖDOS JŪRŲ UOSTAS – KRANTINĖS NR. 64-65A – GILNIMO DARBAI
041 (T) 2022-05-09	PIETRYTINĖ BALTIJOS JŪROS DALIS KLAIPĖDOS UOSTO PĖLAUKA – BANGOLAUŽIŲ REKONSTRUKCIJA
038 (T) 2022-05-06	PIETRYTINĖ BALTIJOS JŪROS DALIS LIEUVOS PAKRANTĖ – MAŪTAVIMO ĮRANGA
022 (T) 2022-03-23	PIETRYTINĖ BALTIJOS JŪROS DALIS LIEUVOS PAKRANTĖ – MAŪTAVIMO ĮRANGA
021 (T) 2021-05-03	PIETRYTINĖ BALTIJOS JŪROS DALIS KLAIPĖDOS JŪRŲ UOSTAS – ŠVARTAVIMOSI POLLAI

5. MSI

- ▶ National GMDSS VHF network along coastline for local Navigational Warnings. Service is provided by Lithuania's Navy MRCC Klaipeda on VHF in Lithuanian and English.
- ▶ NAVAREA 1 Baltic sea subarea Coordinator Sweden takes responsibility for NAVTEX Service over Lithuanian waters and messages are transmitted by Swedish transmitters. All navigational warnings are also published and can be found online on the web pages: [Sjöfartsverket - Navigational Warnings \(sjofartsverket.se\)](http://sjofartsverket.se)
- ▶ [Navigaciniai įspėjimai \(eltsa.lt\)](http://eltsa.lt)

6. C-55

Status of hydrographic survey of waters out to the limits of the EEZ:

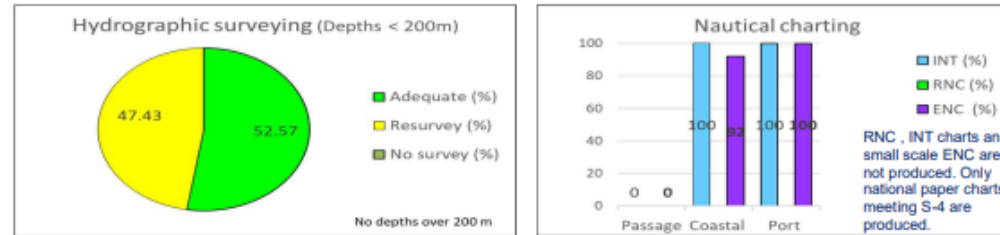
Status of surveys	Adequat (%)	Resurvey (%)	No survey (%)
Depths 0 - 200m	52.57	47.43	0
Depths > 200m	0	0	0

Status of nautical charting within the limits of the EEZ:

Chart coverage	Passage (%)	Coastal (%)	Port (%)
INT or other paper charts meeting S-4	0	100	100
RNC	0	0	0
ENC	0	92	100

Status of Paper Charts

Paper charts with depths in metres (%)	100
Paper charts referenced to a satellite datum (%)	100



Navigational information (S-53):

MSI	Y/N	Comments on MSI
Local warning	YES	can be found on https://hydro.eltsa.lt/nw/en.html
Coastal warning	YES	Transmitted by NAVAREA I Baltic Sea Sub-area Coordinator. Can be found on https://hydro.eltsa.lt/nw/en.html
Nav warning	NO	Transmitted by NAVAREA I Baltic Sea Sub-area Coordinator.
Port warning	YES	can be found on https://hydro.eltsa.lt/nw/en.html

GMDSS implementation (IMO Publication 970 - GMDSS Handbook)

GMDSS	Y/N	Comments on GMDSS
Master Plan	YES	
Area A1	YES	MRCC Klaipeda
Area A2	YES	MRCC Klaipeda
Area A3	NO	
NAVTEX	YES	Transmitted by NAVAREA I Baltic Sea Sub-area Coordinator.
SafetyNet	NO	